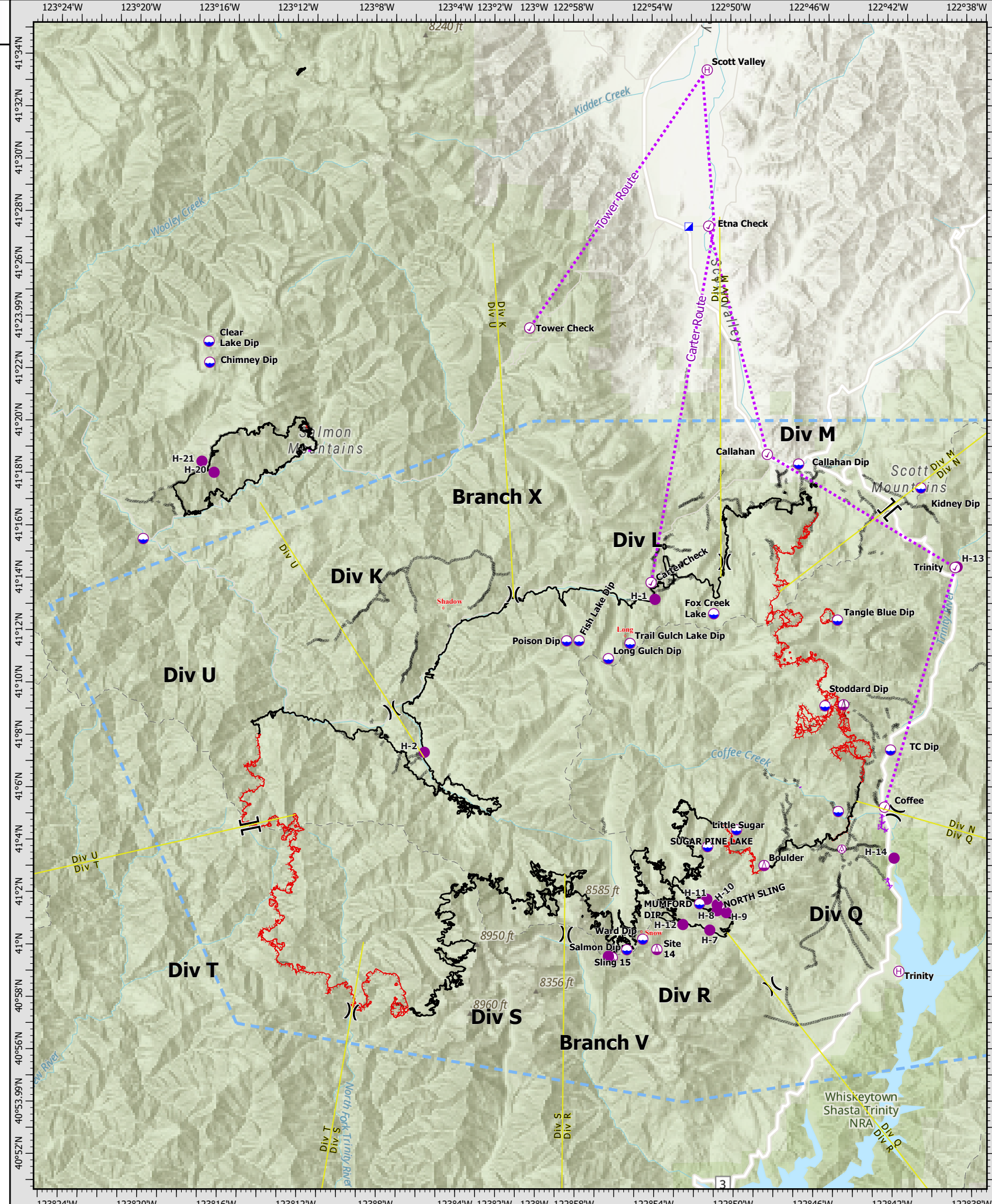


Point Type	Point Name	Latitude WGS84	Longitude WGS84	Elevation (Feet)	Comments
Airstrip or Airport		41° 05.981' N	123° 04.065' W	2,875	Private airstrip. Used by property owner for Cessna.
Check Point	Callahan	41° 18.720' N	122° 48.190' W	3,140	
Check Point	Carter Check	41° 13.836' N	122° 54.088' W	6,425	
Check Point	Coffee	41° 05.240' N	122° 42.320' W	2,486	
Check Point	Etna Check	41° 27.441' N	122° 51.139' W	2,786	ASGS had Planning redirect route line east from ICP and create "Etna Check"
Check Point	Tower Check	41° 23.557' N	123° 00.228' W	5,725	
Check Point	Trinity	41° 14.380' N	122° 38.700' W	3,306	
Dip Site	Callahan Dip	41° 18.348' N	122° 46.608' W	3,200	Heli-Trough
Dip Site	Chimney Dip	41° 22.230' N	123° 16.450' W	6,160	Chimney Rock Lake
Dip Site	Clear Lake Dip	41° 23.033' N	123° 16.487' W	5,798	
Dip Site	Fish Lake Dip	41° 11.618' N	122° 57.732' W	5,977	
Dip Site	Forks Dip	41° 15.490' N	123° 19.790' W	1,500	
Dip Site	Fox Creek Lake	41° 12.640' N	122° 50.920' W	6,574	
Dip Site	Kidney Dip	41° 17.42' N	122° 40.42' W	6,200	Div M East of Hwy 3
Dip Site	Little Sugar	41° 04.390' N	122° 49.790' W	6,642	Type 3 only
Dip Site	Long Gulch Dip	41° 10.930' N	122° 56.250' W	6,436	
Dip Site	Mumford Dip	41° 01.570' N	122° 51.660' W	6,885	
Dip Site	Poison Dip	41° 11.610' N	122° 58.360' W	6,800	
Dip Site	Stoddard Dip	41° 09.107' N	122° 45.312' W	5,800	Site on gov't land
Dip Site	Sugar Pine Lake	41° 03.750' N	122° 51.250' W	6,594	
Dip Site	Tangle Blue Dip	41° 12.385' N	122° 44.660' W	5,741	
Dip Site	TC Dip	41° 04.42' N	122° 42.00' W	2,400	River Bottom Near Coffee
Dip Site	Trail Gulch Lake Dip	41° 11.510' N	122° 55.157' W	6,416	
Dip Site	Ward Dip	41° 00.218' N	122° 54.527' W	7,118	Ward Lake
Helibase	Scott Valley	41° 33.400' N	122° 51.201' W	2,729	
Helibase	Trinity	40° 58.970' N	122° 41.621' W	2,394	
Helispot	H-1	41° 13.195' N	122° 53.891' W	6,200	HOGE, Pad is paved. Located at Carter Summit. No pad marker
Helispot	H-10	41° 01.530' N	122° 50.770' W	6,249	
Helispot	H-11	41° 01.740' N	122° 51.290' W	6,250	
Helispot	H-12	41° 00.778' N	122° 52.503' W	5,547	
Helispot	H-13	41° 14.402' N	122° 38.600' W	3,355	TYPE 2/TYPE 3 APPROVED WITH DUST ABATEMENT (ROADSIDE GRAVEL)
Helispot	H-14	41° 03.293' N	122° 41.842' W	2,375	TYPE 2/TYPE 3 APPROVED WITH DUST ABATEMENT (ROADSIDE GRAVEL)
Helispot	H-16	40° 59.57' N	122° 56.26' W	7,350	Approved for Type 3 Only
Helispot	H-2	41° 07.355' N	123° 05.552' W	2,684	HOGE, Pad is concrete. Located at Petersburg Guard Station. No pad marker.
Helispot	H-20	41° 18.030' N	123° 16.213' W	4,801	Type 3 (Dusty)
Helispot	H-21	41° 18.452' N	123° 16.830' W	4,519	Type 2
Helispot	H-7	41° 00.564' N	122° 51.149' W	5,314	
Helispot	H-8	41° 01.303' N	122° 50.775' W	6,314	
Helispot	H-9	41° 01.230' N	122° 50.313' W	5,958	
Incident Command Post		41° 27.421' N	122° 52.153' W		



River Complex
 CA-KNF-006385
 09/24/2021
 197,474 acres

0 1 2 4 Miles
 Datum: North American 1983

⊙ Aerial Hazard ⌘ Division Break --- Temporary Flight Restriction
⊙ Check Point ⌘ Branch Break --- Fire Edge
⊙ Dip Site ⌘ Incident Command Post --- Contained Line
⊙ Helispot ⌘ Completed Dozer Line --- Assignment Break Lines
⊙ Helibase ⌘ Aerial Hazard --- Wildfire Daily Fire Perimeter
⊙ Sling Site ⌘ Route