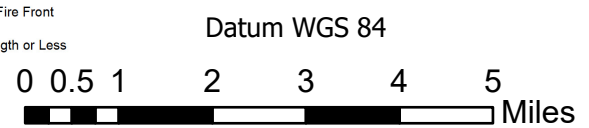


- Active Fire - Uncontrolled Spot Fire or Fire Front
- Creeping Fire - Smoker, 12" Flame Length or Less
- Hot Spot - Significant Priority
- Hot Spot - Moderate Priority



# River Complex

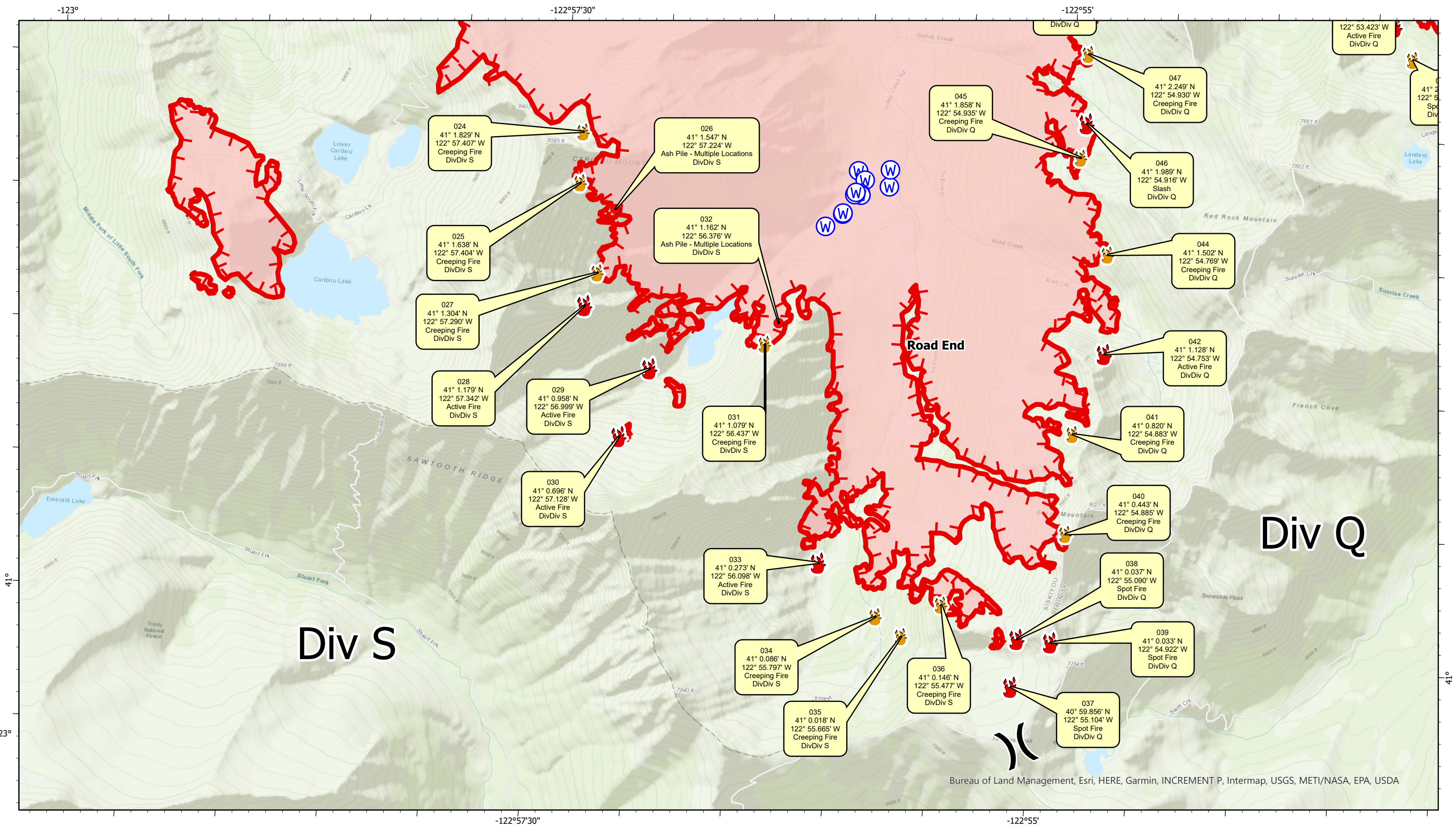
CA-KNF-006385

Infrared Map - Index

Infrared Data Captured on 20210825 @ 1115



Bureau of Land Management, Esri, HERE, Garmin, INCREMENT P, USGS, METI/NASA, EPA, USDA



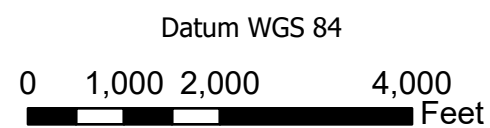
Div S

Div Q

Bureau of Land Management, Esri, HERE, Garmin, INCREMENT P, Intermap, USGS, METI/NASA, EPA, USDA



- Active Fire - Uncontrolled Spot Fire or Fire Front
- Creeping Fire - Smoker, 12" Flame Length or Less
- Hot Spot - Significant Priority
- Hot Spot - Moderate Priority

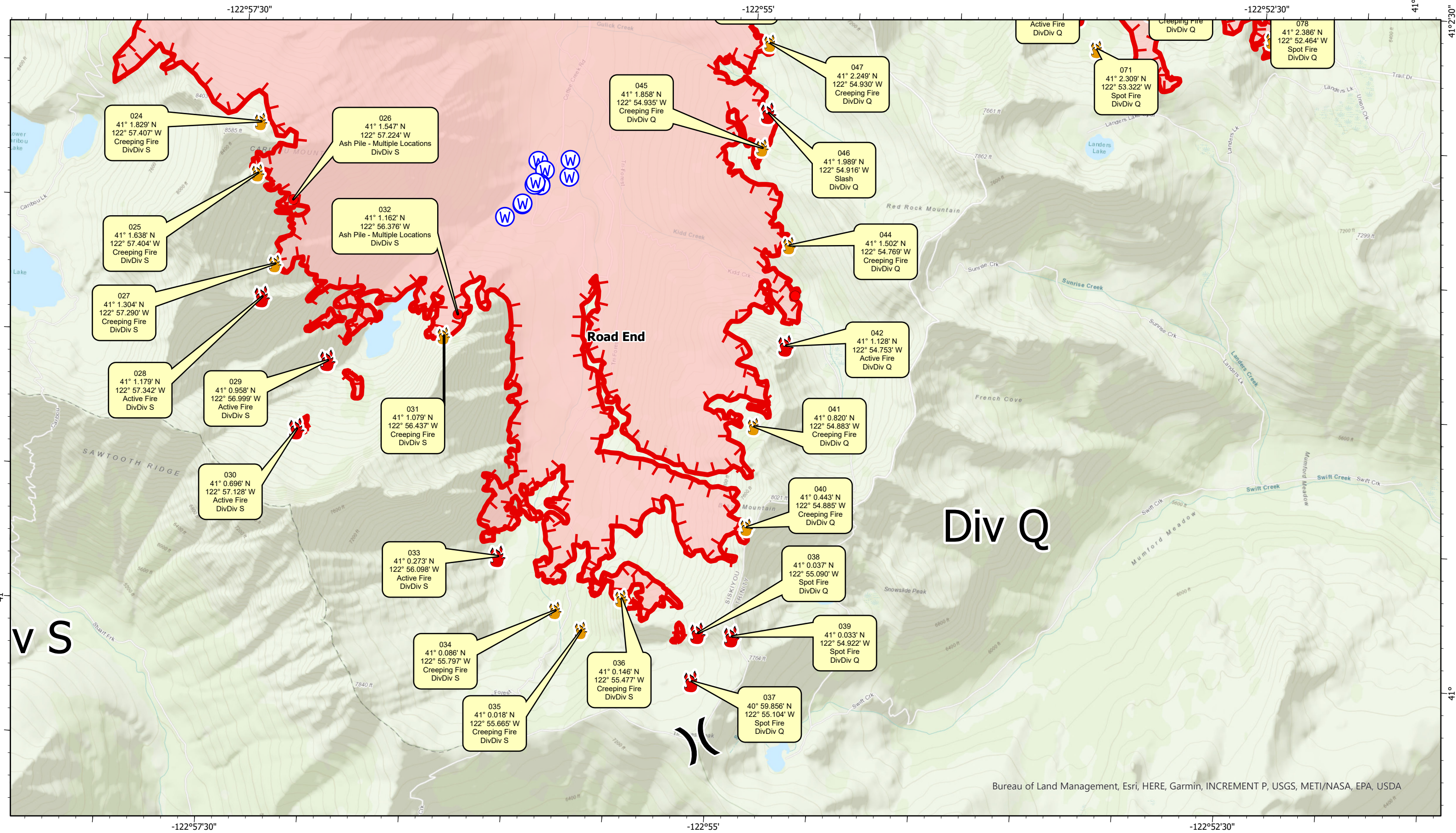


# River Complex

CA-KNF-006385

Infrared Map - Div S  
Infrared Data Captured on 20210825 @ 1115





Div Q

v S

Bureau of Land Management, Esri, HERE, Garmin, INCREMENT P, USGS, METI/NASA, EPA, USDA

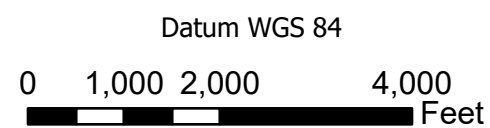
www.VETSresponse.com  
805.218-9646

**VETS**  
VETERAN'S EMERGENCY TECHNICAL SERVICES  
Cost Effective Infrared

www.aspenhelo.com  
805.985-5416

Aspen Helicopters

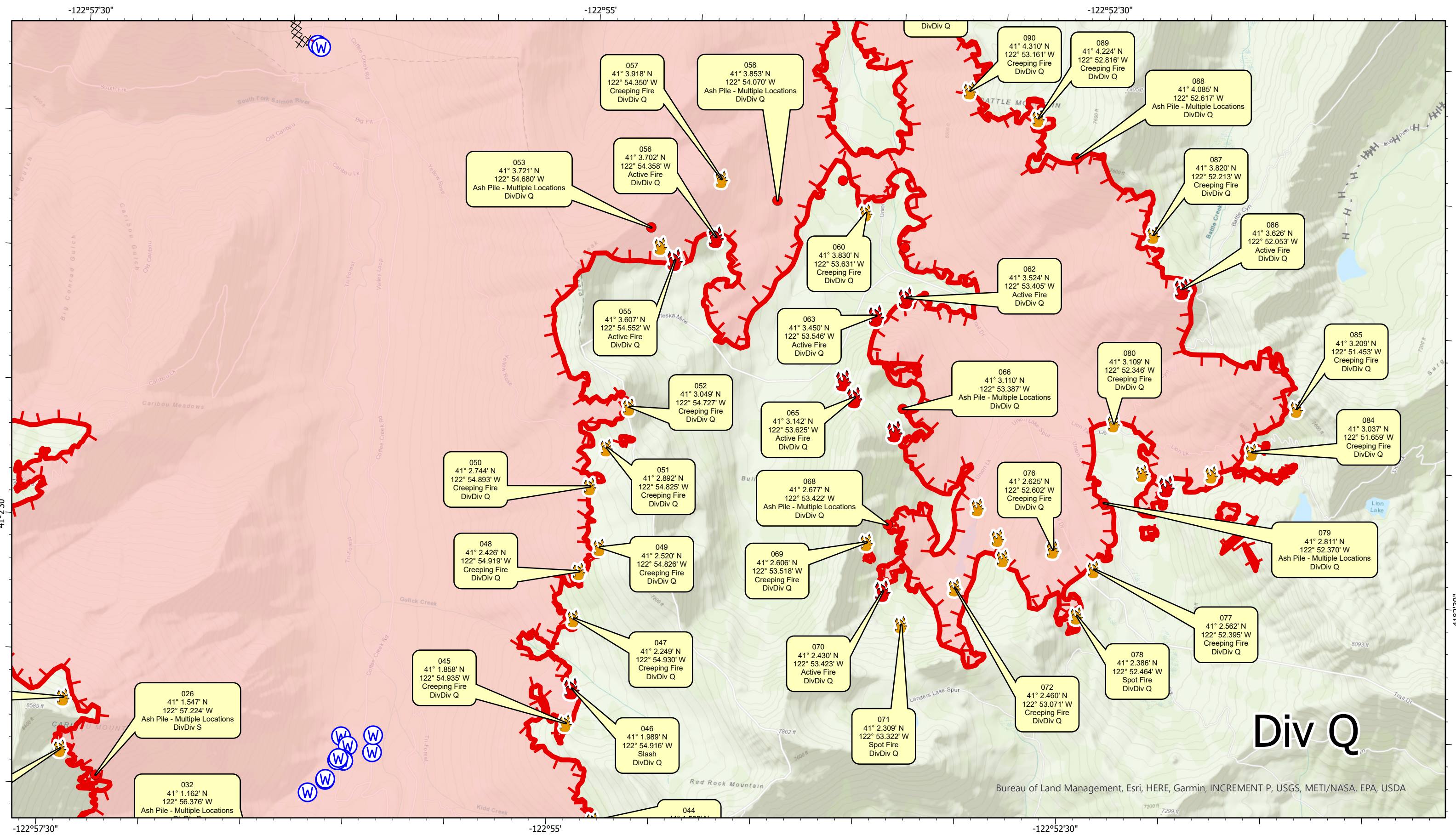
- Active Fire - Uncontrolled Spot Fire or Fire Front
- Creeping Fire - Smoker, 12" Flame Length or Less
- Hot Spot - Significant Priority
- Hot Spot - Moderate Priority



**River Complex**  
CA-KNF-006385

Infrared Map - Div Q - 1  
Infrared Data Captured on 20210825 @ 1115





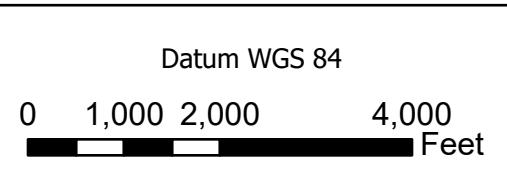
www.VETSresponse.com  
805.218-9646

**VETS**  
VETERAN'S EMERGENCY TECHNICAL SERVICES  
Cost Effective Infrared

www.aspenhelo.com  
805.985-5416

Aspen Helicopters

- Active Fire - Uncontrolled Spot Fire or Fire Front
- Creeping Fire - Smoker, 12" Flame Length or Less
- Hot Spot - Significant Priority
- Hot Spot - Moderate Priority



# River Complex

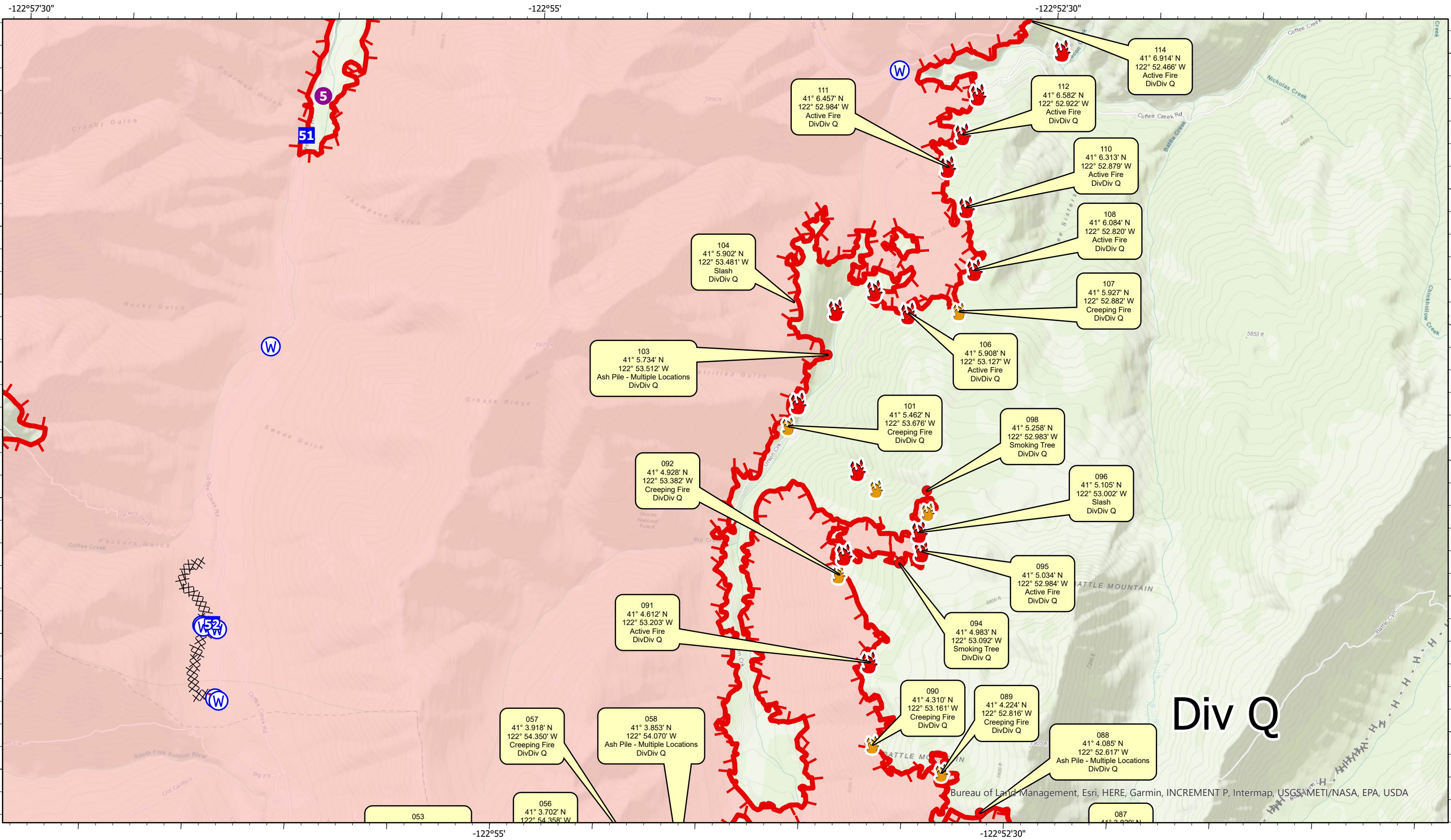
## CA-KNF-006385

Infrared Map - Div Q - 2

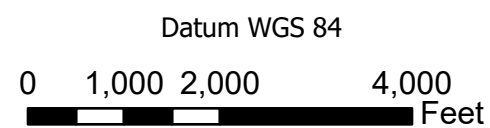
Infrared Data Captured on 20210825 @ 1115

August 25, 2021

Bureau of Land Management, Esri, HERE, Garmin, INCREMENT P, USGS, METI/NASA, EPA, USDA



- Active Fire - Uncontrolled Spot Fire or Fire Front
- Creeping Fire - Smoker, 12" Flame Length or Less
- Hot Spot - Significant Priority
- Hot Spot - Moderate Priority



# River Complex

## CA-KNF-006385

Infrared Map - Div Q - 3

Infrared Data Captured on 20210825 @ 1115











**INFRARED MAPPING**  
VETERAN'S EMERGENCY TECHNICAL SERVICES

**INFRARED MAP LEGEND**

-  Hot Spot - Moderate Priority (Heat above 200°, Little Vegetation in Vicinity)
-  Hot Spot - Significant Priority (Heat above 200°, Unburned Vegetation in Vicinity)
-  Creeping Fire - Smoker, 12" Flame Lengths or Less
-  Active Fire - Uncontained Spot Fire or Fire Front

GPS Coordinates are in Degrees & Decimal Minutes (DD MM.mmmm')

Datum is WGS 84 (unless otherwise noted on map) Ex. N 37° 44.575'  
W -119° 32.101'

Date and Time is when the intelligence was gathered

Heat Sources are normally acquired within a 400 foot strip, 200 feet inside and 200 feet outside the fire line or fire front (wider strips are flown as necessary and are labeled on infrared map).

**LIMITS TO INFRARED AND GPS INFORMATION**

Under the best conditions heat sources less than 4 to 6 inches in diameter are inconsistent.

Heat sources under heavy canopy or in large rock piles are difficult to verify.

Accuracy of positive identification of heat sources is 90%

Accuracy of negative identification of heat sources is 10% to 20%. (Depending on canopy).

Accuracy of GPS coordinates is within 50 feet, 90% of the time.

**Infrared Labeling Details:**

