

# River Complex - Cronan Fire

CA-KNF-006385

Infrared Map - Index

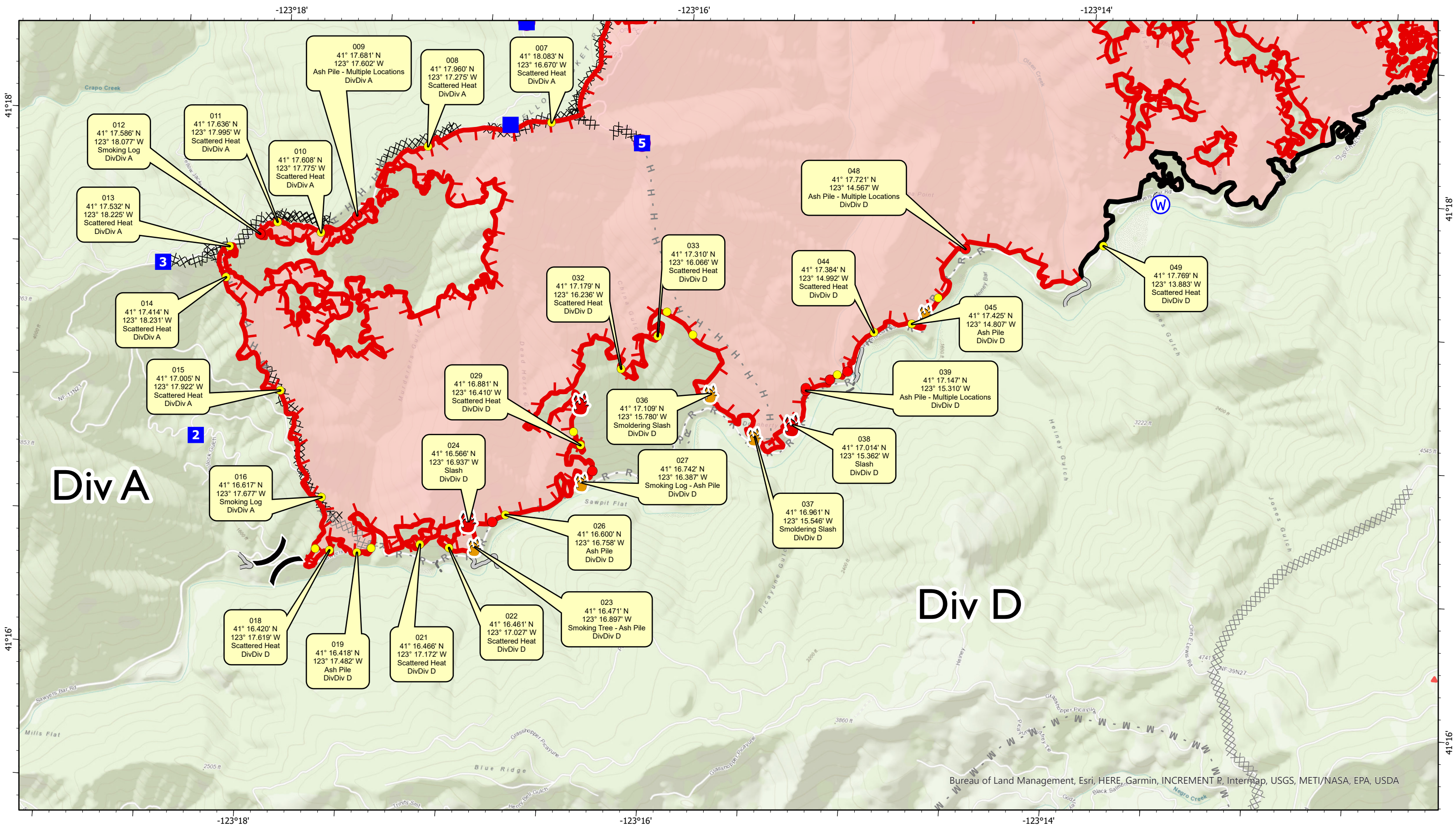
Infrared Data Captured on 20210826 @ 1045



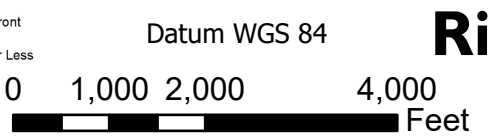
- Active Fire - Uncontrolled Spot Fire or Fire Front
- Creeping Fire - Smoker, 12" Flame Length or Less
- Hot Spot - Significant Priority
- Hot Spot - Moderate Priority







- Active Fire - Uncontrolled Spot Fire or Fire Front
- Creeping Fire - Smoker, 12" Flame Length or Less
- Hot Spot - Significant Priority
- Hot Spot - Moderate Priority



# River Complex - Cronan Fire

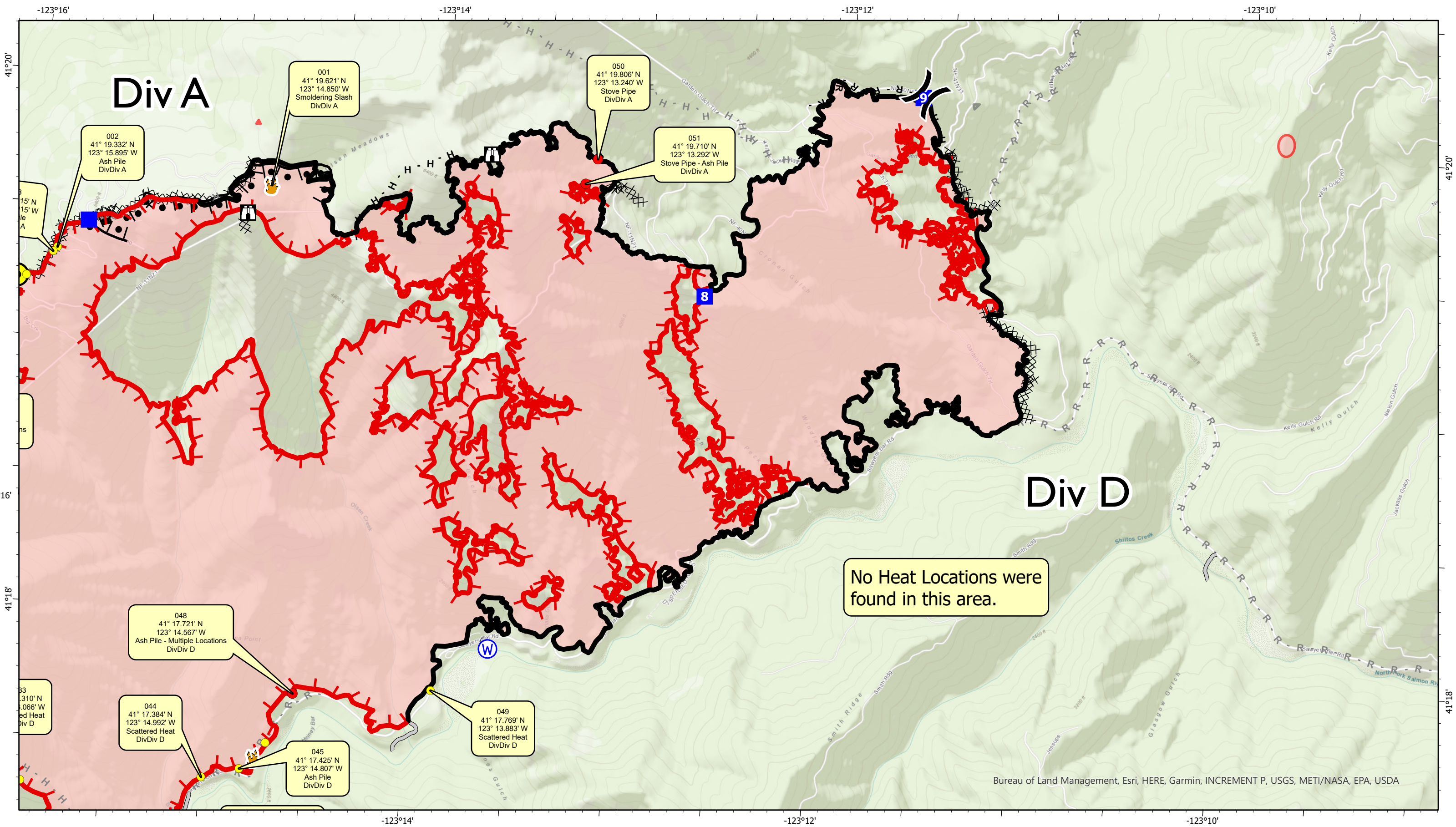
CA-KNF-006385

Infrared Map - Div D - 1  
 Infrared Data Captured on 20210826 @ 1045



Bureau of Land Management, Esri, HERE, Garmin, INCREMENT P, Intermap, USGS, METI/NASA, EPA, USDA

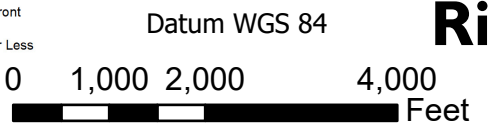




Bureau of Land Management, Esri, HERE, Garmin, INCREMENT P, USGS, METI/NASA, EPA, USDA



- Active Fire - Uncontrolled Spot Fire or Fire Front
- Creeping Fire - Smoker, 12" Flame Length or Less
- Hot Spot - Significant Priority
- Hot Spot - Moderate Priority



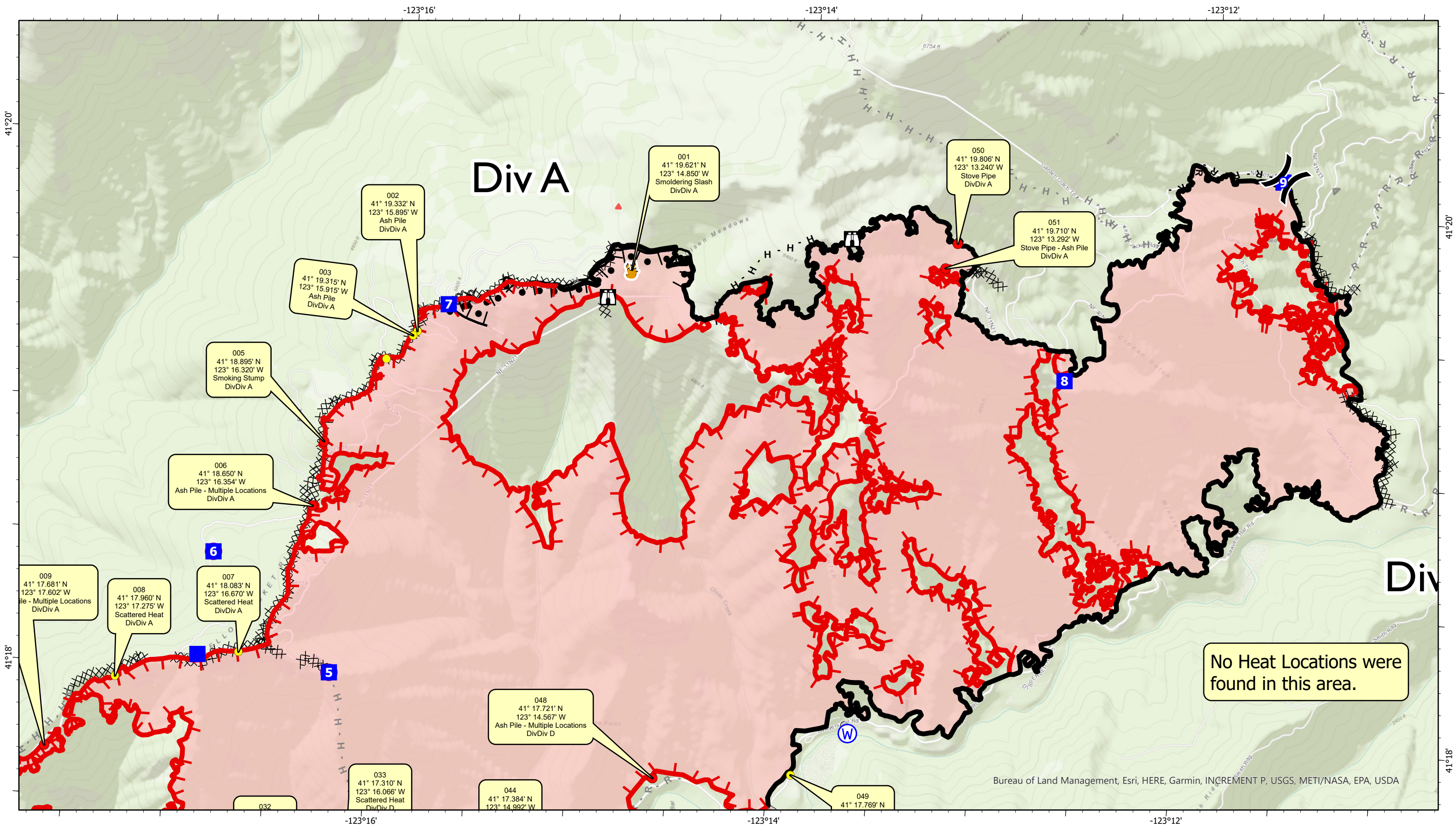
# River Complex - Cronan Fire

CA-KNF-006385

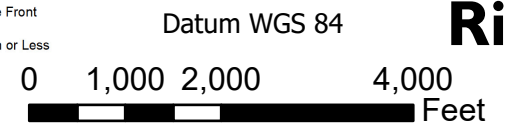
Infrared Map - Div D - 2  
Infrared Data Captured on 20210826 @ 1045







- Active Fire - Uncontrolled Spot Fire or Fire Front
- Creeping Fire - Smoker, 12" Flame Length or Less
- Hot Spot - Significant Priority
- Hot Spot - Moderate Priority



# River Complex - Cronan Fire

CA-KNF-006385

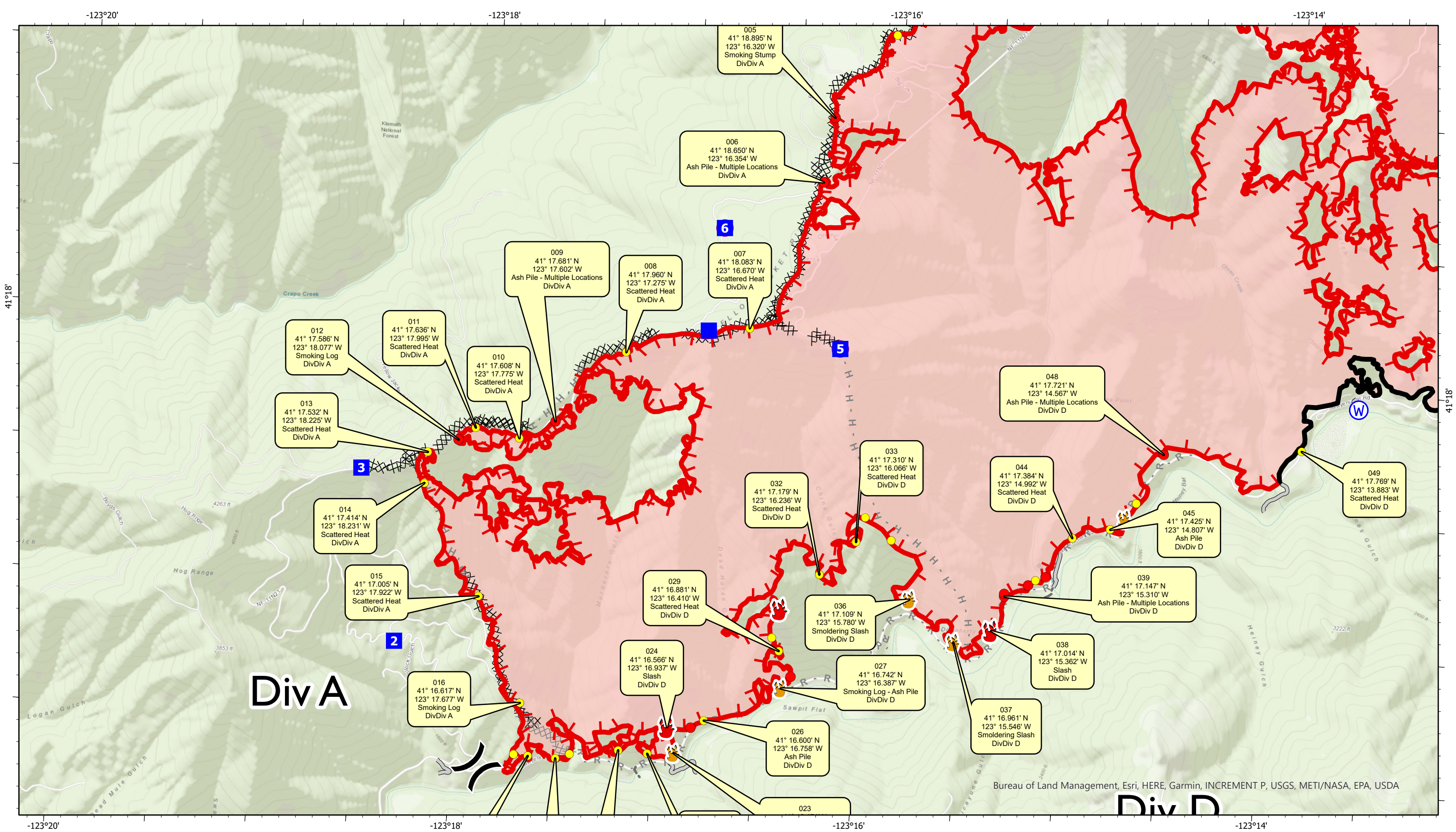
Infrared Map - Div A - 1

Infrared Data Captured on 20210826 @ 1045



Bureau of Land Management, Esri, HERE, Garmin, INCREMENT P, USGS, METI/NASA, EPA, USDA





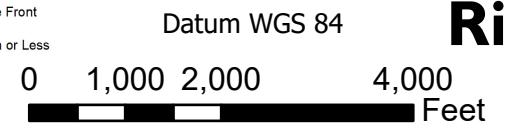
Div A

Div D

Bureau of Land Management, Esri, HERE, Garmin, INCREMENT P, USGS, METI/NASA, EPA, USDA



- Active Fire - Uncontrolled Spot Fire or Fire Front
- Creeping Fire - Smoker, 12" Flame Length or Less
- Hot Spot - Significant Priority
- Hot Spot - Moderate Priority



# River Complex - Cronan Fire

CA-KNF-006385

Infrared Map - Div A - 2  
 Infrared Data Captured on 20210826 @ 1045











## INFRARED MAPPING

VETERAN'S EMERGENCY TECHNICAL SERVICES

### INFRARED MAP LEGEND

-  Hot Spot - Moderate Priority (Heat above 200°, Little Vegetation in Vicinity)
-  Hot Spot - Significant Priority (Heat above 200°, Unburned Vegetation in Vicinity)
-  Creeping Fire - Smoker, 12" Flame Lengths or Less
-  Active Fire - Uncontained Spot Fire or Fire Front

GPS Coordinates are in Degrees & Decimal Minutes (DD MM.mmmm')

Datum is WGS 84 (unless otherwise noted on map)

Ex. N 37° 44.575'  
W -119° 32.101'

Date and Time is when the intelligence was gathered

Heat Sources are normally acquired within a 400 foot strip, 200 feet inside and 200 feet outside the fire line or fire front (wider strips are flown as necessary and are labeled on infrared map).

### LIMITS TO INFRARED AND GPS INFORMATION

Under the best conditions heat sources less than 4 to 6 inches in diameter are inconsistent.

Heat sources under heavy canopy or in large rock piles are difficult to verify.

Accuracy of positive identification of heat sources is 90%

Accuracy of negative identification of heat sources is 10% to 20%. (Depending on canopy).

Accuracy of GPS coordinates is within 50 feet, 90% of the time.

### Infrared Labeling Details:

