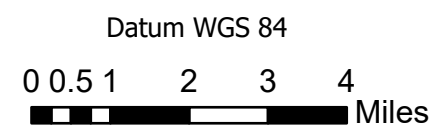


- Active Fire - Uncontrolled Spot Fire or Fire Front
- Creeping Fire - Smoker, 12" Flame Length or Less
- Hot Spot - Significant Priority
- Hot Spot - Moderate Priority



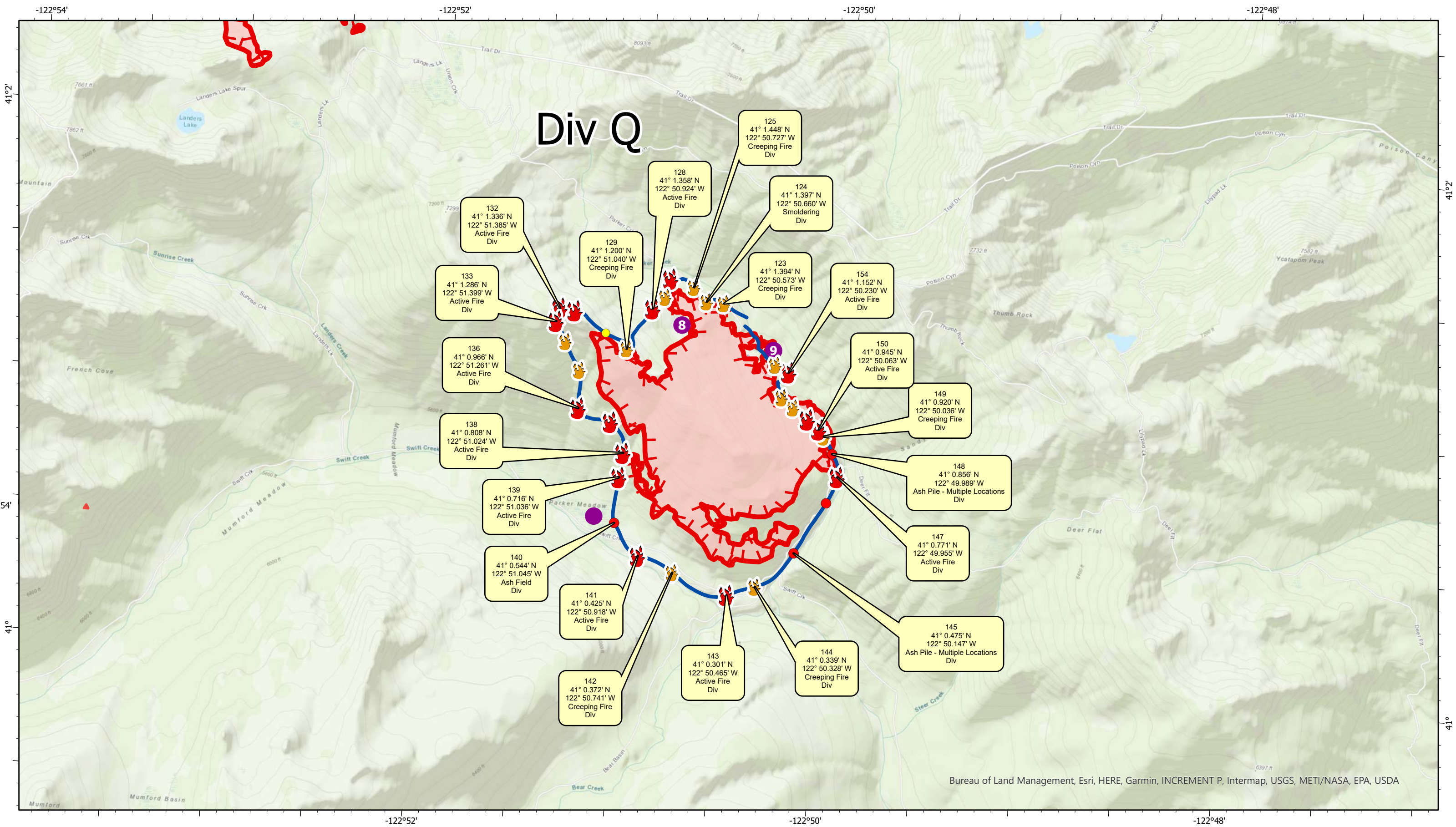
River Complex

CA-KNF-006385

Infrared Map - Index

Infrared Data Captured on 20210827 @ 1130





Div Q

- 125
41° 1.448' N
122° 50.727' W
Creeping Fire Div
- 128
41° 1.358' N
122° 50.924' W
Active Fire Div
- 124
41° 1.397' N
122° 50.660' W
Smoldering Div
- 123
41° 1.394' N
122° 50.573' W
Creeping Fire Div
- 154
41° 1.152' N
122° 50.230' W
Active Fire Div
- 150
41° 0.945' N
122° 50.063' W
Active Fire Div
- 149
41° 0.920' N
122° 50.036' W
Creeping Fire Div
- 148
41° 0.856' N
122° 49.989' W
Ash Pile - Multiple Locations Div
- 147
41° 0.771' N
122° 49.955' W
Active Fire Div
- 145
41° 0.475' N
122° 50.147' W
Ash Pile - Multiple Locations Div
- 144
41° 0.339' N
122° 50.328' W
Creeping Fire Div
- 143
41° 0.301' N
122° 50.465' W
Active Fire Div
- 142
41° 0.372' N
122° 50.741' W
Creeping Fire Div
- 141
41° 0.425' N
122° 50.918' W
Active Fire Div
- 140
41° 0.544' N
122° 51.045' W
Ash Field Div
- 139
41° 0.716' N
122° 51.036' W
Active Fire Div
- 138
41° 0.808' N
122° 51.024' W
Active Fire Div
- 136
41° 0.966' N
122° 51.261' W
Active Fire Div
- 133
41° 1.286' N
122° 51.399' W
Active Fire Div
- 132
41° 1.336' N
122° 51.385' W
Active Fire Div

Bureau of Land Management, Esri, HERE, Garmin, INCREMENT P, Intermap, USGS, METI/NASA, EPA, USDA

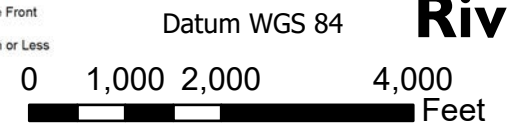
www.VETSresponse.com
805.218.9646

VETS
Cost Effective Infrared

www.aspenhelo.com
805.985.5416

Aspen Helicopters

- Active Fire - Uncontrolled Spot Fire or Fire Front
- Creeping Fire - Smoker, 12" Flame Length or Less
- Hot Spot - Significant Priority
- Hot Spot - Moderate Priority



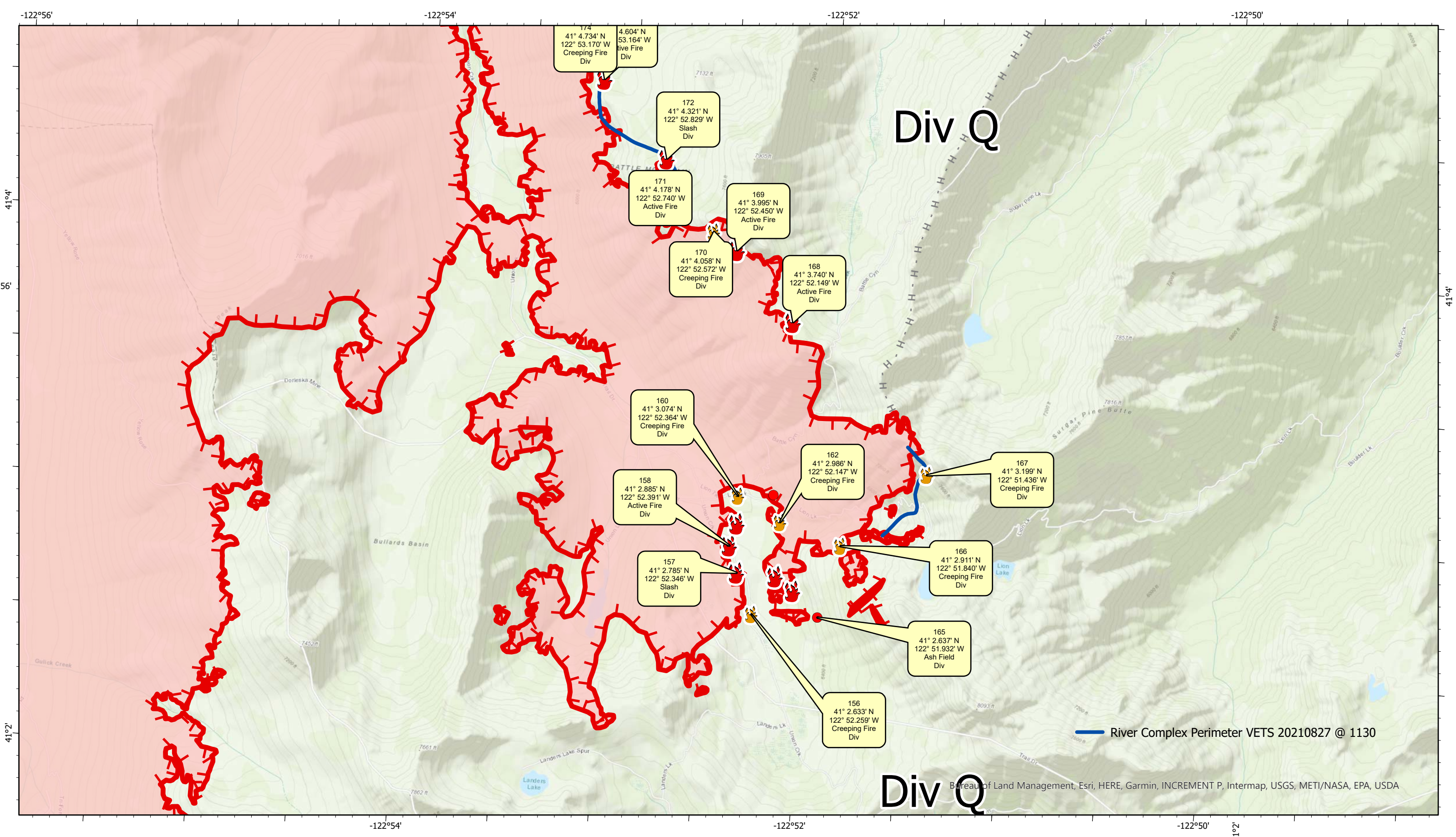
River Complex - Parker Fire

CA-KNF-006385

Infrared Map - Parker Fire

Infrared Data Captured on 20210827 @ 1130





www.VETSresponse.com
805.218.9646

VETS
Cost Effective Infrared

Aspen Helicopters
www.aspenhelo.com
805.985.5416

- Active Fire - Uncontrolled Spot Fire or Fire Front
- Creeping Fire - Smoker, 12" Flame Length or Less
- Hot Spot - Significant Priority
- Hot Spot - Moderate Priority

Datum WGS 84

0 1,000 2,000 4,000 Feet

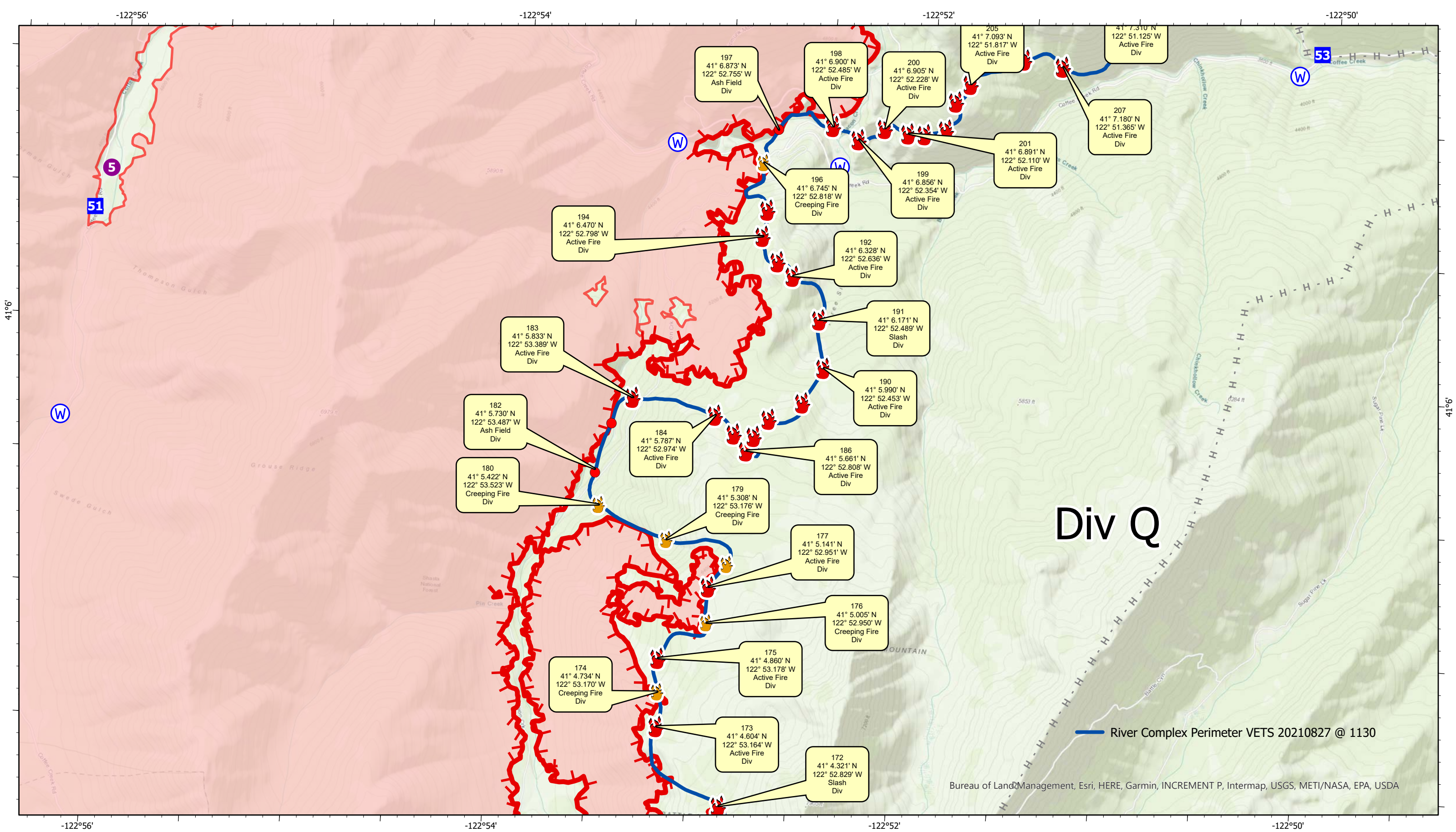
River Complex

CA-KNF-006385

Infrared Map - Div Q - Page 1

Infrared Data Captured on 20210827 @ 1130

August 27, 2021



- 197
41° 6.873' N
122° 52.755' W
Ash Field Div
- 198
41° 6.900' N
122° 52.485' W
Active Fire Div
- 200
41° 6.905' N
122° 52.228' W
Active Fire Div
- 205
41° 7.093' N
122° 51.817' W
Active Fire Div
- 41° 7.310' N
122° 51.125' W
Active Fire Div
- 207
41° 7.180' N
122° 51.365' W
Active Fire Div
- 201
41° 6.891' N
122° 52.110' W
Active Fire Div
- 199
41° 6.856' N
122° 52.354' W
Active Fire Div
- 196
41° 6.745' N
122° 52.818' W
Creeping Fire Div
- 192
41° 6.328' N
122° 52.636' W
Active Fire Div
- 191
41° 6.171' N
122° 52.489' W
Slash Div
- 190
41° 5.990' N
122° 52.453' W
Active Fire Div
- 186
41° 5.661' N
122° 52.808' W
Active Fire Div
- 183
41° 5.833' N
122° 53.389' W
Active Fire Div
- 184
41° 5.787' N
122° 52.974' W
Active Fire Div
- 180
41° 5.422' N
122° 53.523' W
Creeping Fire Div
- 179
41° 5.308' N
122° 53.176' W
Creeping Fire Div
- 177
41° 5.141' N
122° 52.951' W
Active Fire Div
- 176
41° 5.005' N
122° 52.950' W
Creeping Fire Div
- 175
41° 4.860' N
122° 53.178' W
Active Fire Div
- 174
41° 4.734' N
122° 53.170' W
Creeping Fire Div
- 173
41° 4.604' N
122° 53.164' W
Active Fire Div
- 172
41° 4.321' N
122° 52.829' W
Slash Div

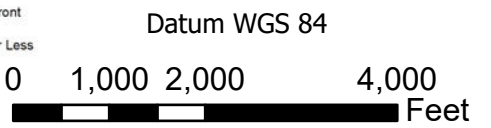
Div Q

— River Complex Perimeter VETS 20210827 @ 1130

Bureau of Land Management, Esri, HERE, Garmin, INCREMENT P, Intermap, USGS, METI/NASA, EPA, USDA



- Active Fire - Uncontrolled Spot Fire or Fire Front
- Creeping Fire - Smoker, 12" Flame Length or Less
- Hot Spot - Significant Priority
- Hot Spot - Moderate Priority

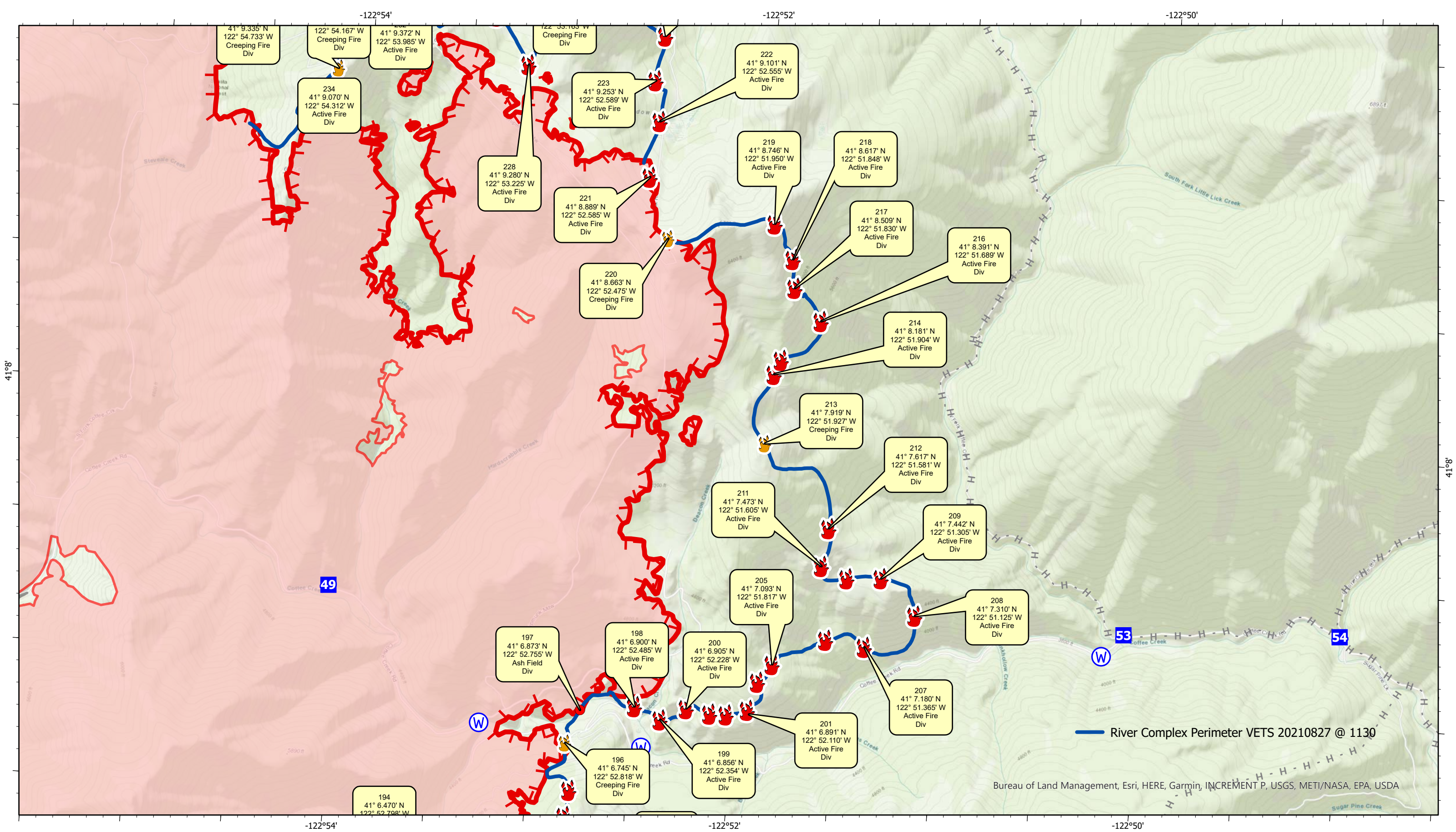


River Complex

CA-KNF-006385

Infrared Map - Div Q - Page 2
Infrared Data Captured on 20210827 @ 1130



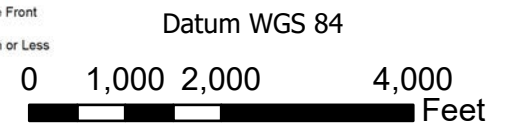


— River Complex Perimeter VETS 20210827 @ 1130

Bureau of Land Management, Esri, HERE, Garmin, INCREMENT P, USGS, METI/NASA, EPA, USDA



- Active Fire - Uncontrolled Spot Fire or Fire Front
- Creeping Fire - Smoker, 12" Flame Length or Less
- Hot Spot - Significant Priority
- Hot Spot - Moderate Priority

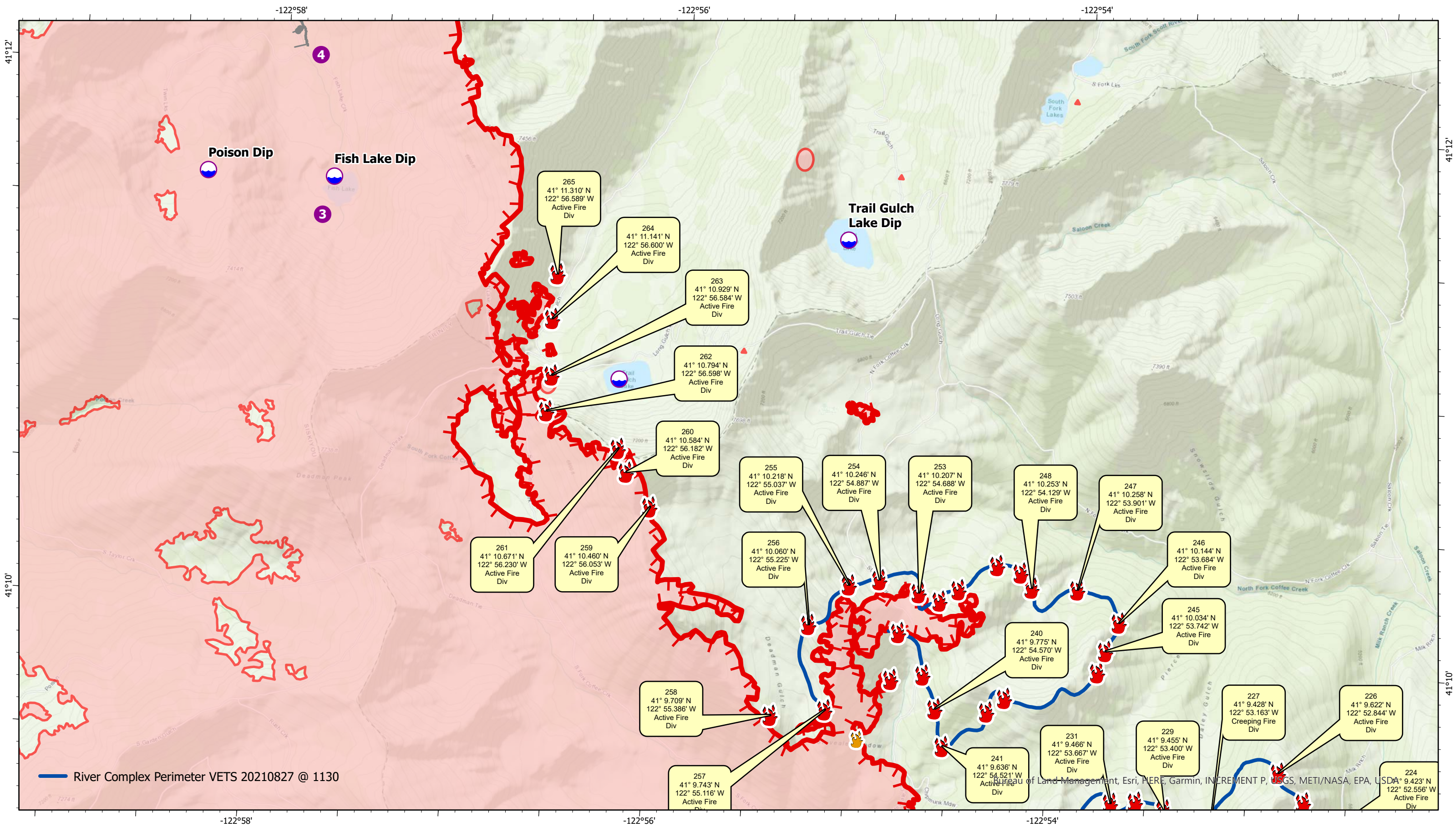


River Complex

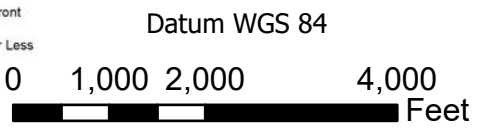
CA-KNF-006385

Infrared Map - Div Q - Page 3
 Infrared Data Captured on 20210827 @ 1130





- Active Fire - Uncontrolled Spot Fire or Fire Front
- Creeping Fire - Smoker, 12" Flame Length or Less
- Hot Spot - Significant Priority
- Hot Spot - Moderate Priority

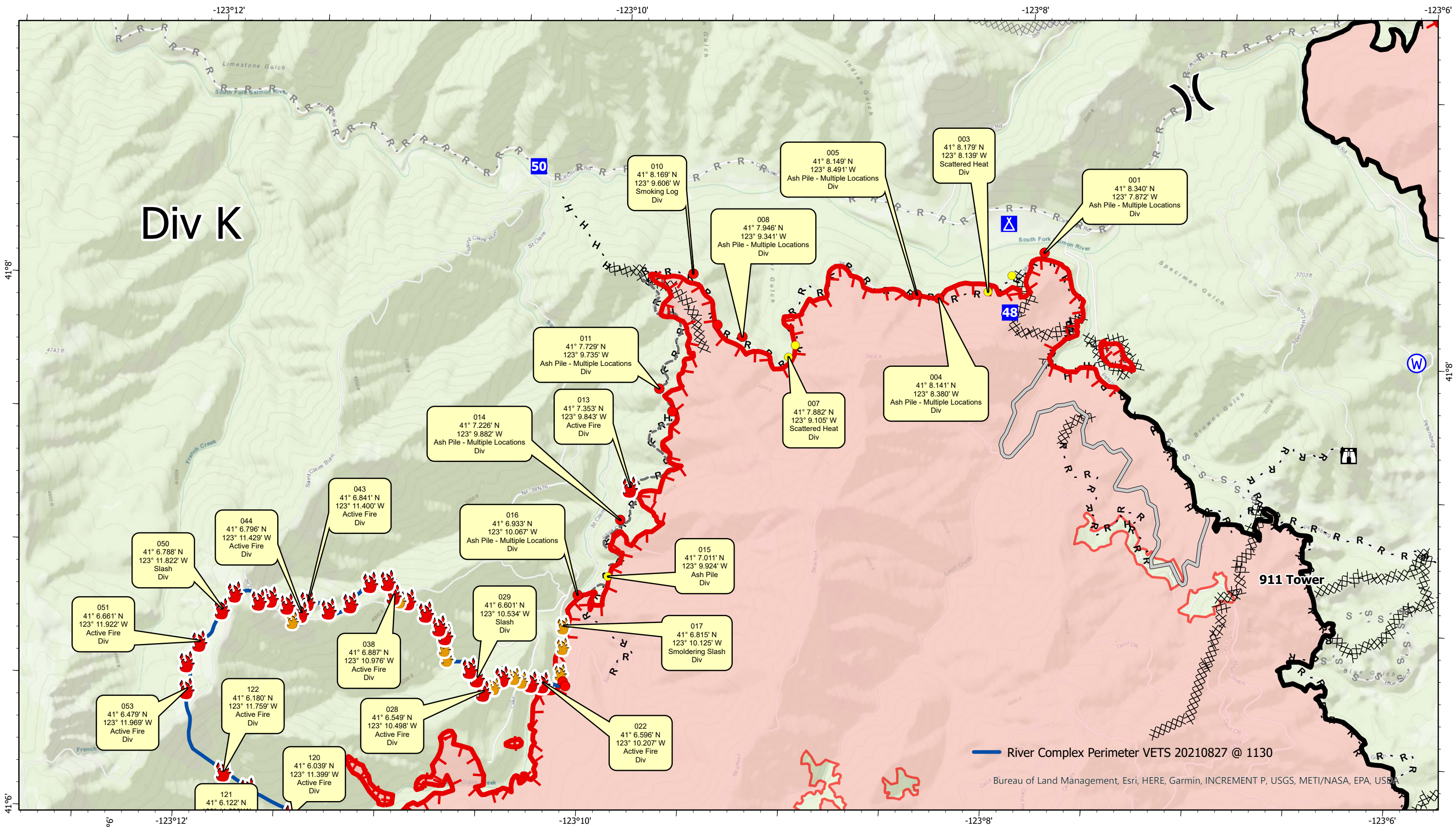


River Complex

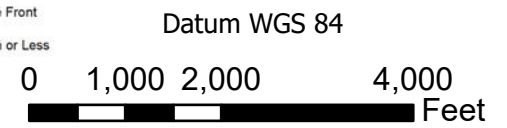
CA-KNF-006385

Infrared Map - Div Q - Page 5
Infrared Data Captured on 20210827 @ 1130





- Active Fire - Uncontrolled Spot Fire or Fire Front
- Creeping Fire - Smoker, 12" Flame Length or Less
- Hot Spot - Significant Priority
- Hot Spot - Moderate Priority



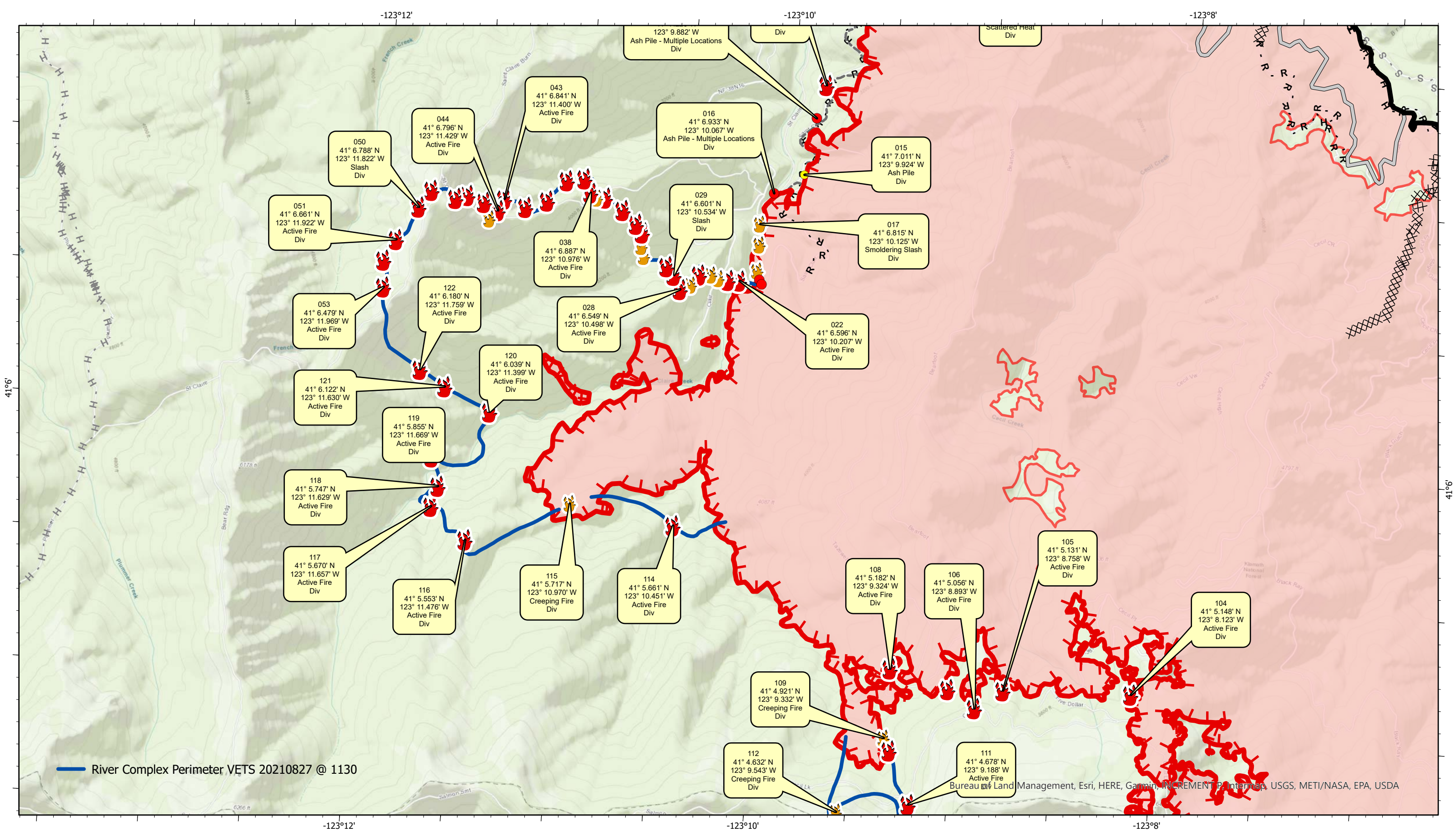
River Complex

CA-KNF-006385

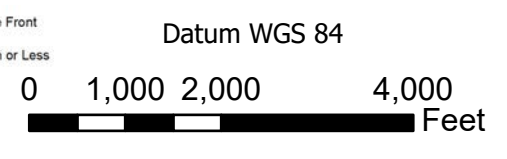
Infrared Map - Div K - Page 1

Infrared Data Captured on 20210827 @ 1130





- Active Fire - Uncontrolled Spot Fire or Fire Front
- Creeping Fire - Smoker, 12" Flame Length or Less
- Hot Spot - Significant Priority
- Hot Spot - Moderate Priority



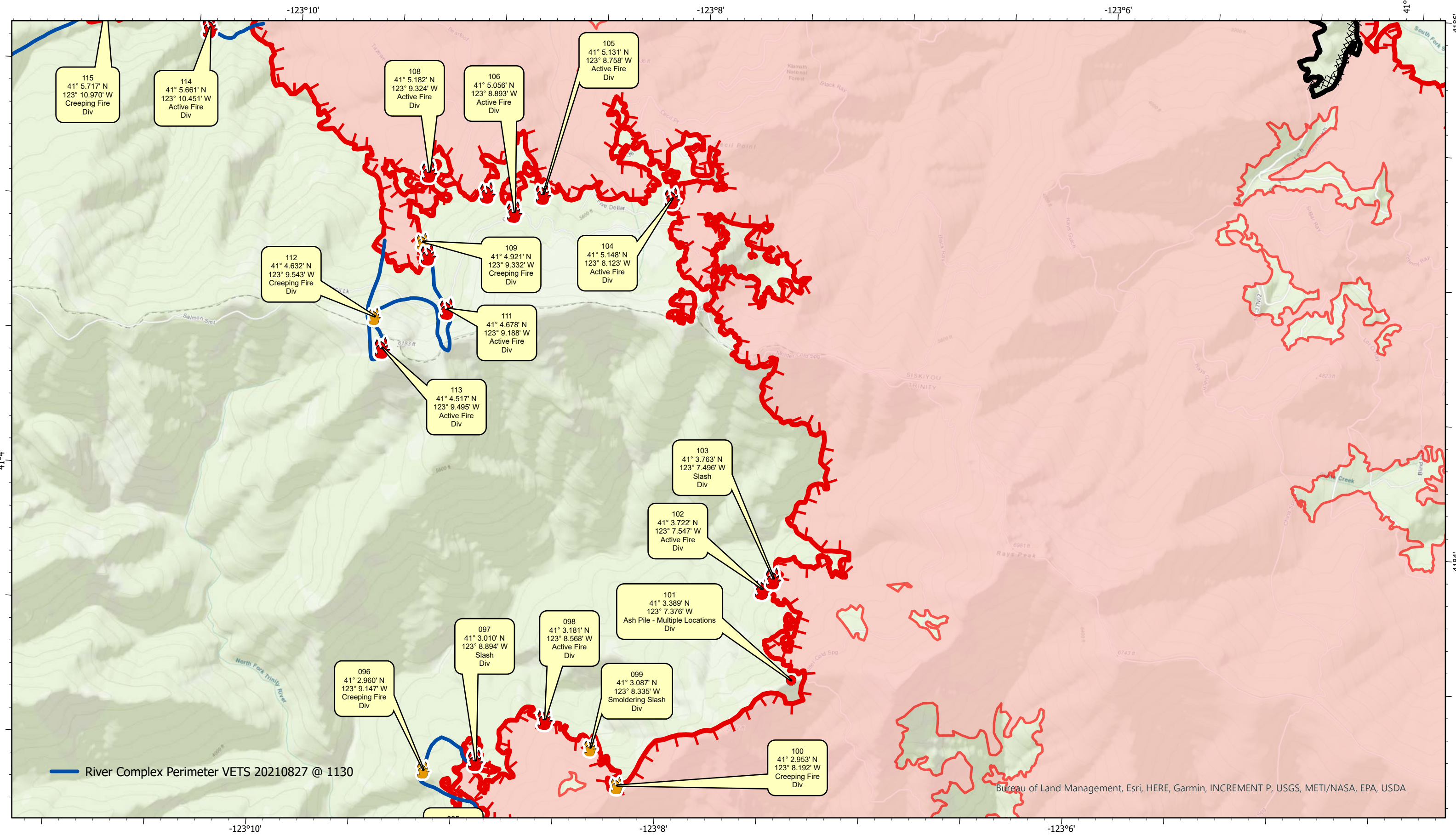
River Complex

CA-KNF-006385

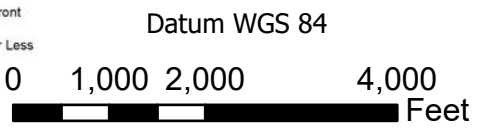
Infrared Map - Div K - Page 2

Infrared Data Captured on 20210827 @ 1130





- Active Fire - Uncontrolled Spot Fire or Fire Front
- Creeping Fire - Smoker, 12" Flame Length or Less
- Hot Spot - Significant Priority
- Hot Spot - Moderate Priority

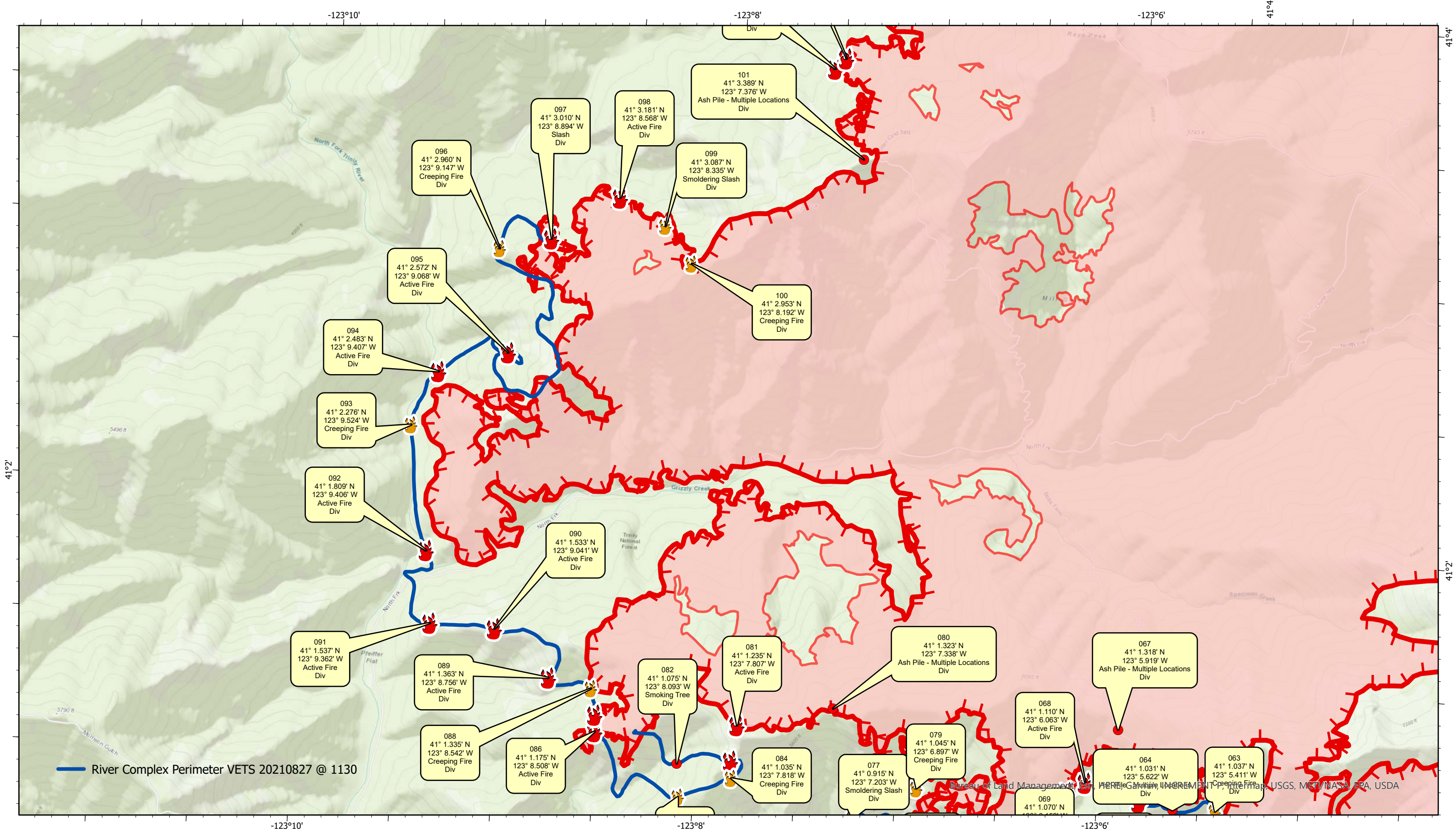


River Complex

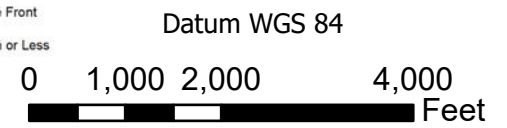
CA-KNF-006385

Infrared Map - Div K - Page 3
Infrared Data Captured on 20210827 @ 1130





- Active Fire - Uncontrolled Spot Fire or Fire Front
- Creeping Fire - Smoker, 12" Flame Length or Less
- Hot Spot - Significant Priority
- Hot Spot - Moderate Priority

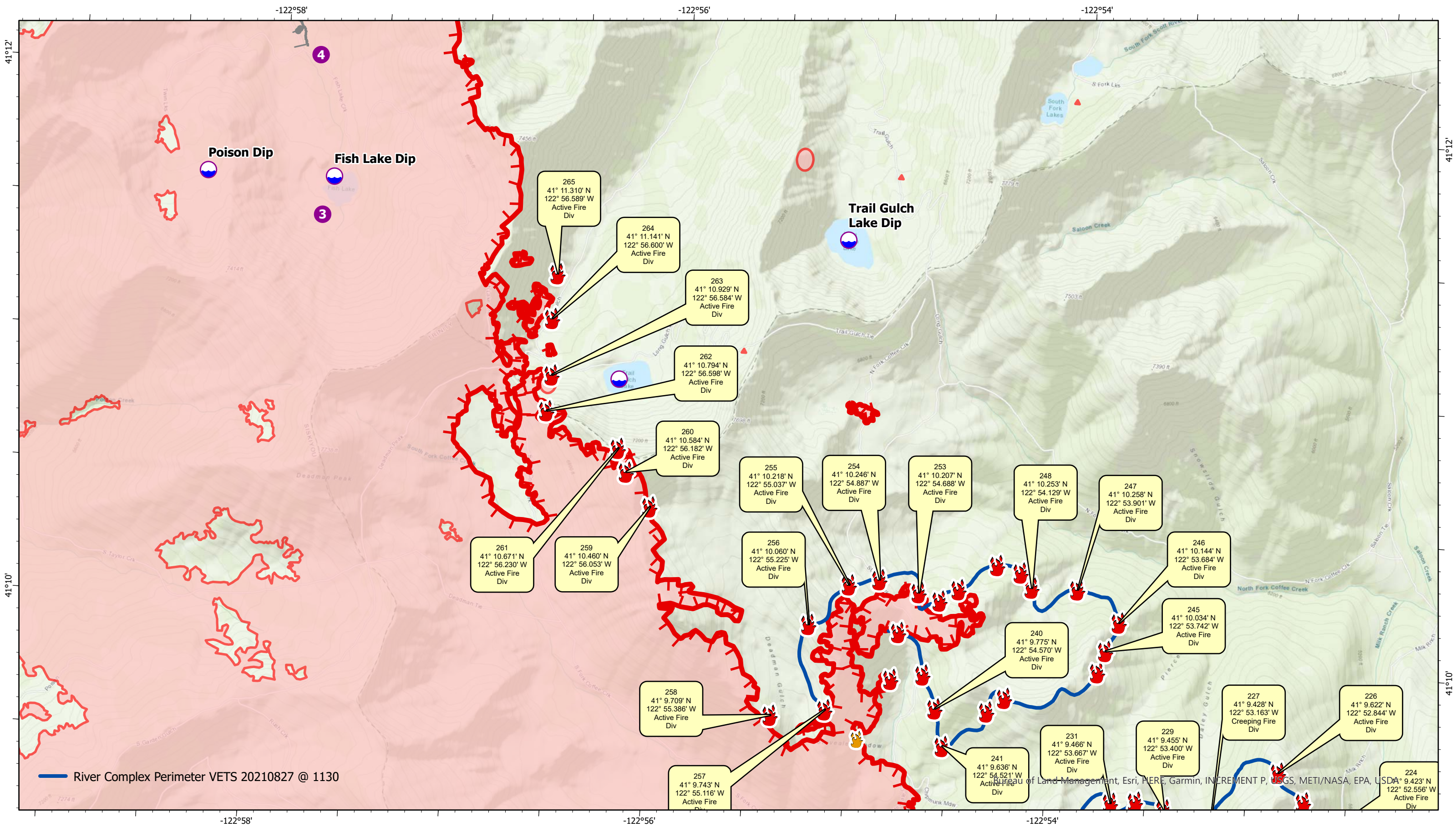


River Complex

CA-KNF-006385

Infrared Map - Div K - Page 4
Infrared Data Captured on 20210827 @ 1130

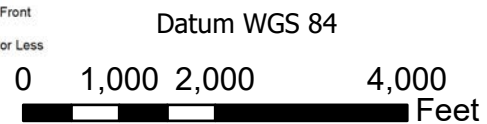




— River Complex Perimeter VETS 20210827 @ 1130



- Active Fire - Uncontrolled Spot Fire or Fire Front
- Creeping Fire - Smoker, 12" Flame Length or Less
- Hot Spot - Significant Priority
- Hot Spot - Moderate Priority



River Complex

CA-KNF-006385

Infrared Map - Div Q - Page 5
 Infrared Data Captured on 20210827 @ 1130







www.VETSresponse.com
805.218-9646

VETERAN'S EMERGENCY TECHNICAL SERVICES
VETS
Cost Effective Infrared

Setting the Standards Since 1980
Aspen Helicopters INC.
www.aspenhelo.com
805.985-5416



INFRARED MAP LEGEND

-  Hot Spot - Moderate Priority (Heat above 200°, Little Vegetation in Vicinity)
-  Hot Spot - Significant Priority (Heat above 200°, Unburned Vegetation in Vicinity)
-  Creeping Fire - Smoker, 12" Flame Lengths or Less
-  Active Fire - Uncontained Spot Fire or Fire Front

GPS Coordinates are in Degrees & Decimal Minutes (DD MM.mmmm')

Datum is WGS 84 (unless otherwise noted on map) Ex. N 37° 44.575'
W -119° 32.101'

Date and Time is when the intelligence was gathered

Heat Sources are normally acquired within a 400 foot strip, 200 feet inside and 200 feet outside the fire line or fire front (wider strips are flown as necessary and are labeled on infrared map).

LIMITS TO INFRARED AND GPS INFORMATION

Under the best conditions heat sources less than 4 to 6 inches in diameter are inconsistent.

Heat sources under heavy canopy or in large rock piles are difficult to verify.

Accuracy of positive identification of heat sources is 90%

Accuracy of negative identification of heat sources is 10% to 20%. (Depending on canopy).

Accuracy of GPS coordinates is within 50 feet, 90% of the time.

Infrared Labeling Details:

