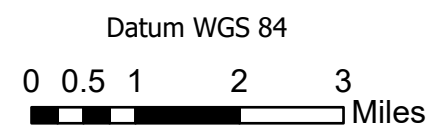


- Active Fire - Uncontrolled Spot Fire or Fire Front
- Creeping Fire - Smoker, 12" Flame Length or Less
- Hot Spot - Significant Priority
- Hot Spot - Moderate Priority



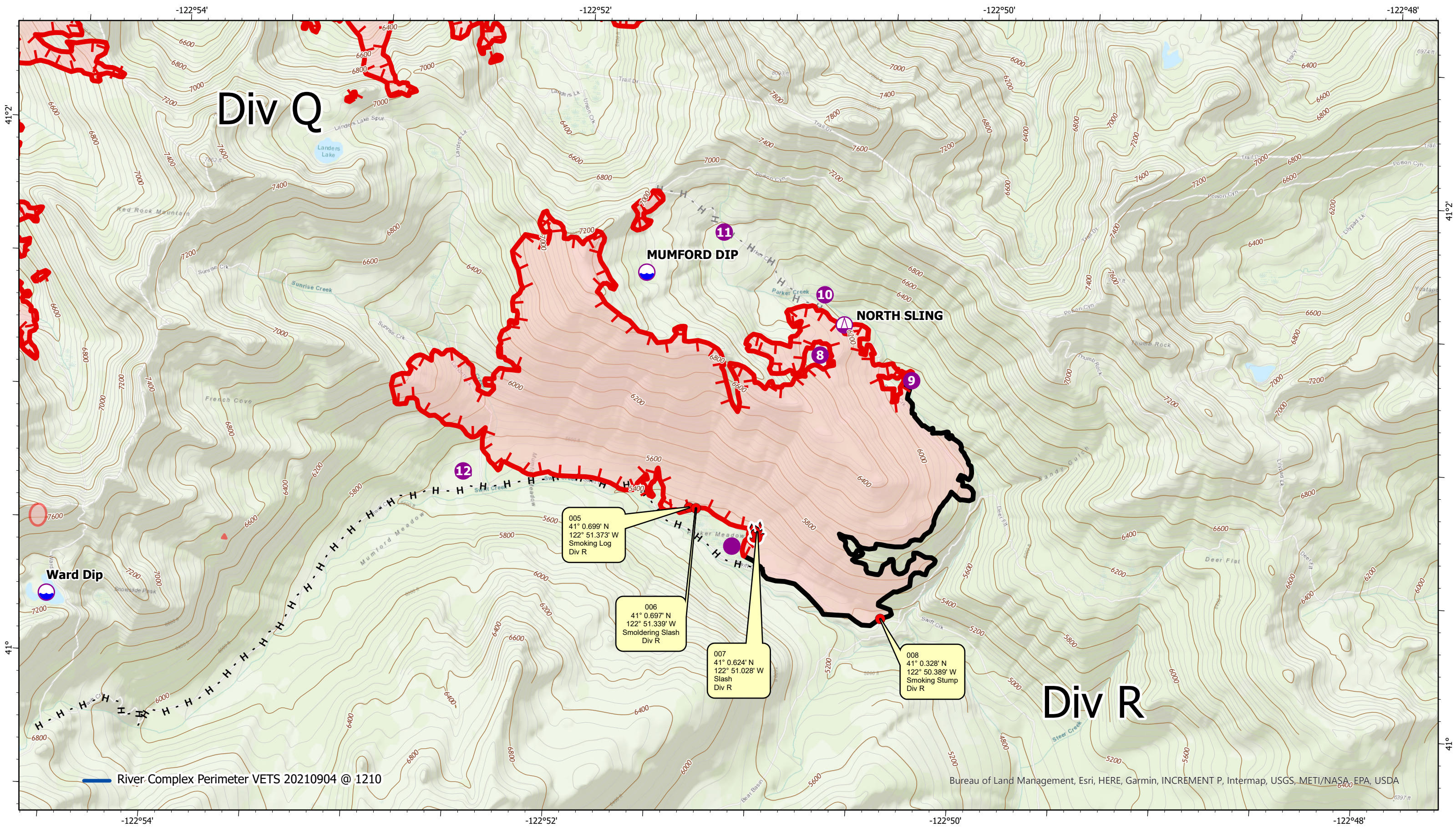
River Complex

CA-KNF-006385

Infrared Map - Index

Infrared Data Captured on 20210904 @ 1210





005
41° 0.699' N
122° 51.373' W
Smoking Log
Div R

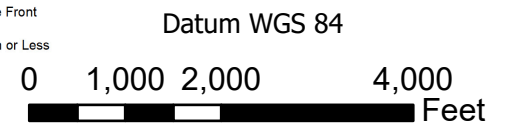
006
41° 0.697' N
122° 51.339' W
Smoldering Slash
Div R

007
41° 0.624' N
122° 51.028' W
Slash
Div R

008
41° 0.328' N
122° 50.389' W
Smoking Stump
Div R



- Active Fire - Uncontrolled Spot Fire or Fire Front
- Creeping Fire - Smoker, 12" Flame Length or Less
- Hot Spot - Significant Priority
- Hot Spot - Moderate Priority

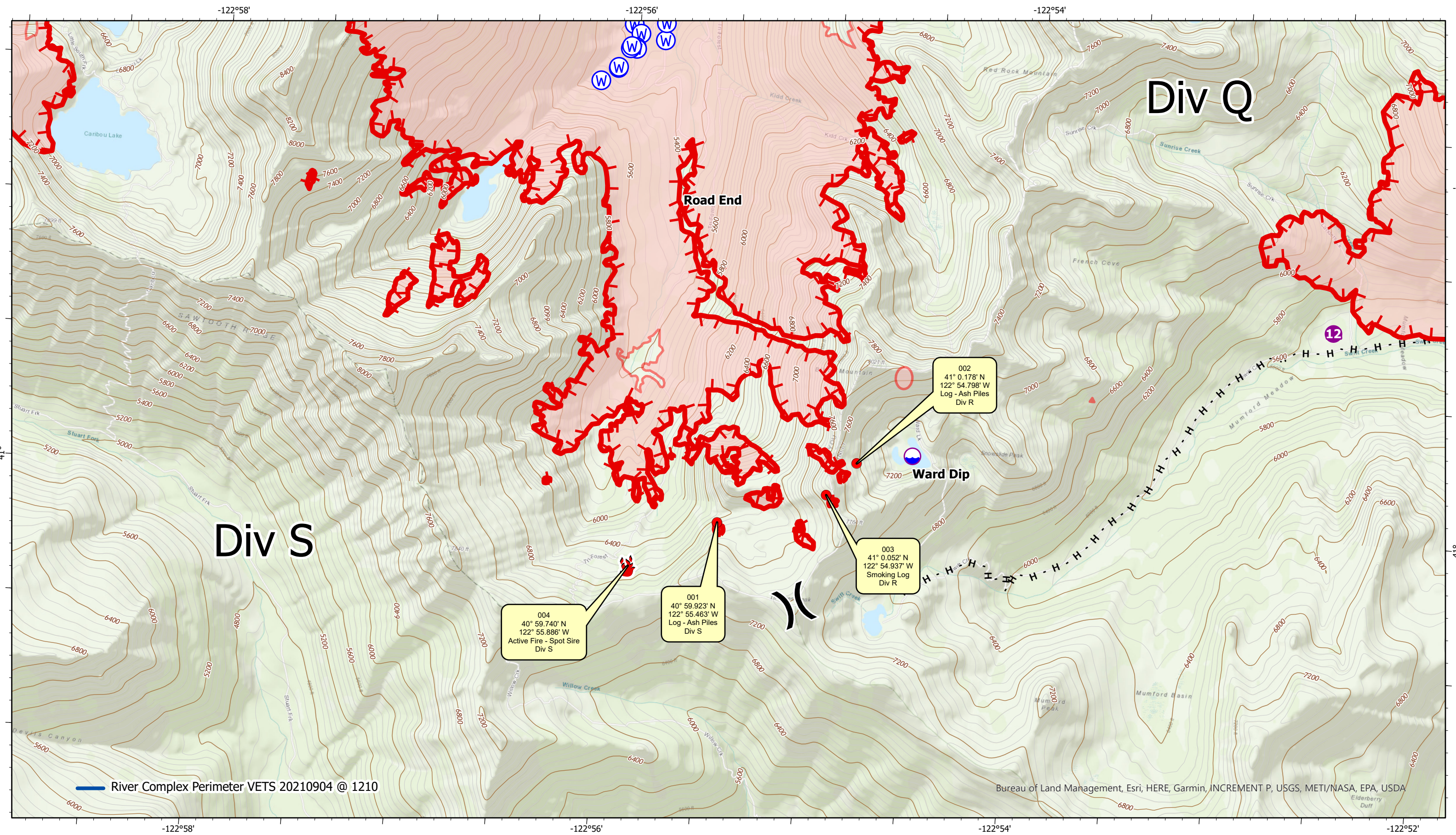


River Complex

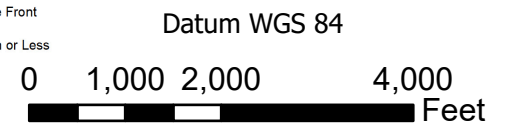
CA-KNF-006385

Infrared Map - Div R - Parker Spot
Infrared Data Captured on 20210904 @ 1210





- Active Fire - Uncontrolled Spot Fire or Fire Front
- Creeping Fire - Smoker, 12" Flame Length or Less
- Hot Spot - Significant Priority
- Hot Spot - Moderate Priority

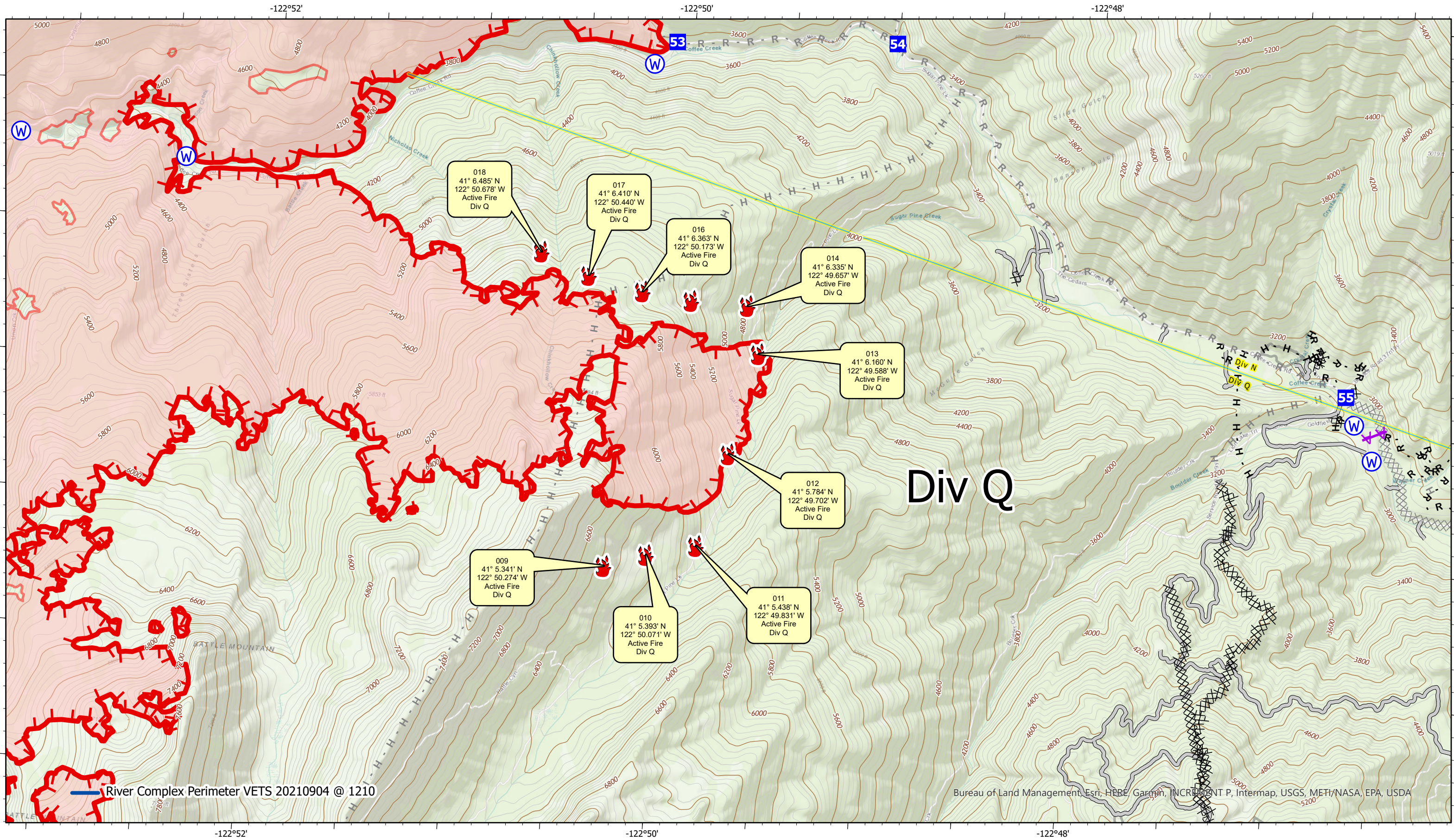


River Complex

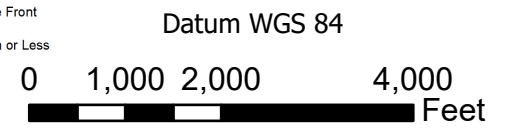
CA-KNF-006385

Infrared Map - Div S & Q
Infrared Data Captured on 20210904 @ 1210





- Active Fire - Uncontrolled Spot Fire or Fire Front
- Creeping Fire - Smoker, 12" Flame Length or Less
- Hot Spot - Significant Priority
- Hot Spot - Moderate Priority



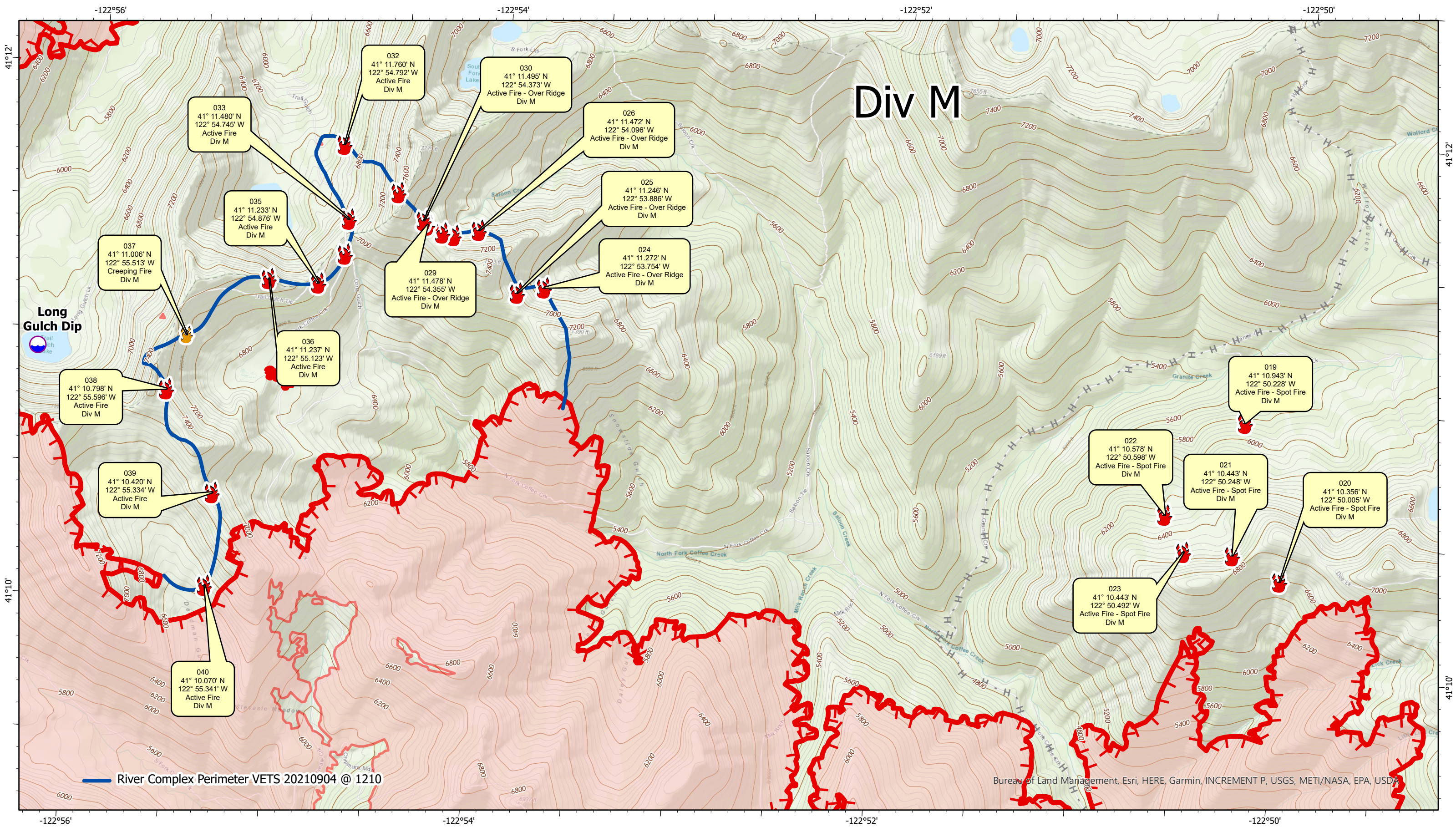
River Complex

CA-KNF-006385

Infrared Map - Div Q

Infrared Data Captured on 20210904 @ 1210

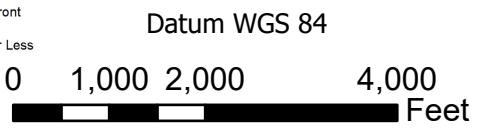




- 032
41° 11.760' N
122° 54.792' W
Active Fire
Div M
- 030
41° 11.495' N
122° 54.373' W
Active Fire - Over Ridge
Div M
- 026
41° 11.472' N
122° 54.096' W
Active Fire - Over Ridge
Div M
- 025
41° 11.246' N
122° 53.886' W
Active Fire - Over Ridge
Div M
- 024
41° 11.272' N
122° 53.754' W
Active Fire - Over Ridge
Div M
- 029
41° 11.478' N
122° 54.355' W
Active Fire - Over Ridge
Div M
- 033
41° 11.480' N
122° 54.745' W
Active Fire
Div M
- 035
41° 11.233' N
122° 54.876' W
Active Fire
Div M
- 037
41° 11.006' N
122° 55.513' W
Creeping Fire
Div M
- 038
41° 10.798' N
122° 55.596' W
Active Fire
Div M
- 039
41° 10.420' N
122° 55.334' W
Active Fire
Div M
- 036
41° 11.237' N
122° 55.123' W
Active Fire
Div M
- 040
41° 10.070' N
122° 55.341' W
Active Fire
Div M
- 019
41° 10.943' N
122° 50.228' W
Active Fire - Spot Fire
Div M
- 022
41° 10.578' N
122° 50.598' W
Active Fire - Spot Fire
Div M
- 021
41° 10.443' N
122° 50.248' W
Active Fire - Spot Fire
Div M
- 020
41° 10.356' N
122° 50.005' W
Active Fire - Spot Fire
Div M
- 023
41° 10.443' N
122° 50.492' W
Active Fire - Spot Fire
Div M



- Active Fire - Uncontrolled Spot Fire or Fire Front
- Creeping Fire - Smoker, 12" Flame Length or Less
- Hot Spot - Significant Priority
- Hot Spot - Moderate Priority



River Complex
CA-KNF-006385

Infrared Map - Div M
Infrared Data Captured on 20210904 @ 1210



www.VETSresponse.com
805.218-9646

VETERAN'S EMERGENCY TECHNICAL SERVICES
VETS
Cost Effective Infrared





Setting the Standards Since 1980
Aspen Helicopters INC.
www.aspenhelo.com
805.985-5416



INFRARED MAPPING

VETERAN'S EMERGENCY TECHNICAL SERVICES

INFRARED MAP LEGEND

-  Hot Spot - Moderate Priority (Heat above 200°, Little Vegetation in Vicinity)
-  Hot Spot - Significant Priority (Heat above 200°, Unburned Vegetation in Vicinity)
-  Creeping Fire - Smoker, 12" Flame Lengths or Less
-  Active Fire - Uncontained Spot Fire or Fire Front

GPS Coordinates are in Degrees & Decimal Minutes (DD MM.mmmm')

Datum is WGS 84 (unless otherwise noted on map)

Ex. N 37° 44.575'
W -119° 32.101'

Date and Time is when the intelligence was gathered

Heat Sources are normally acquired within a 400 foot strip, 200 feet inside and 200 feet outside the fire line or fire front (wider strips are flown as necessary and are labeled on infrared map).

LIMITS TO INFRARED AND GPS INFORMATION

Under the best conditions heat sources less than 4 to 6 inches in diameter are inconsistent.

Heat sources under heavy canopy or in large rock piles are difficult to verify.

Accuracy of positive identification of heat sources is 90%

Accuracy of negative identification of heat sources is 10% to 20%. (Depending on canopy).

Accuracy of GPS coordinates is within 50 feet, 90% of the time.

Infrared Labeling Details:

