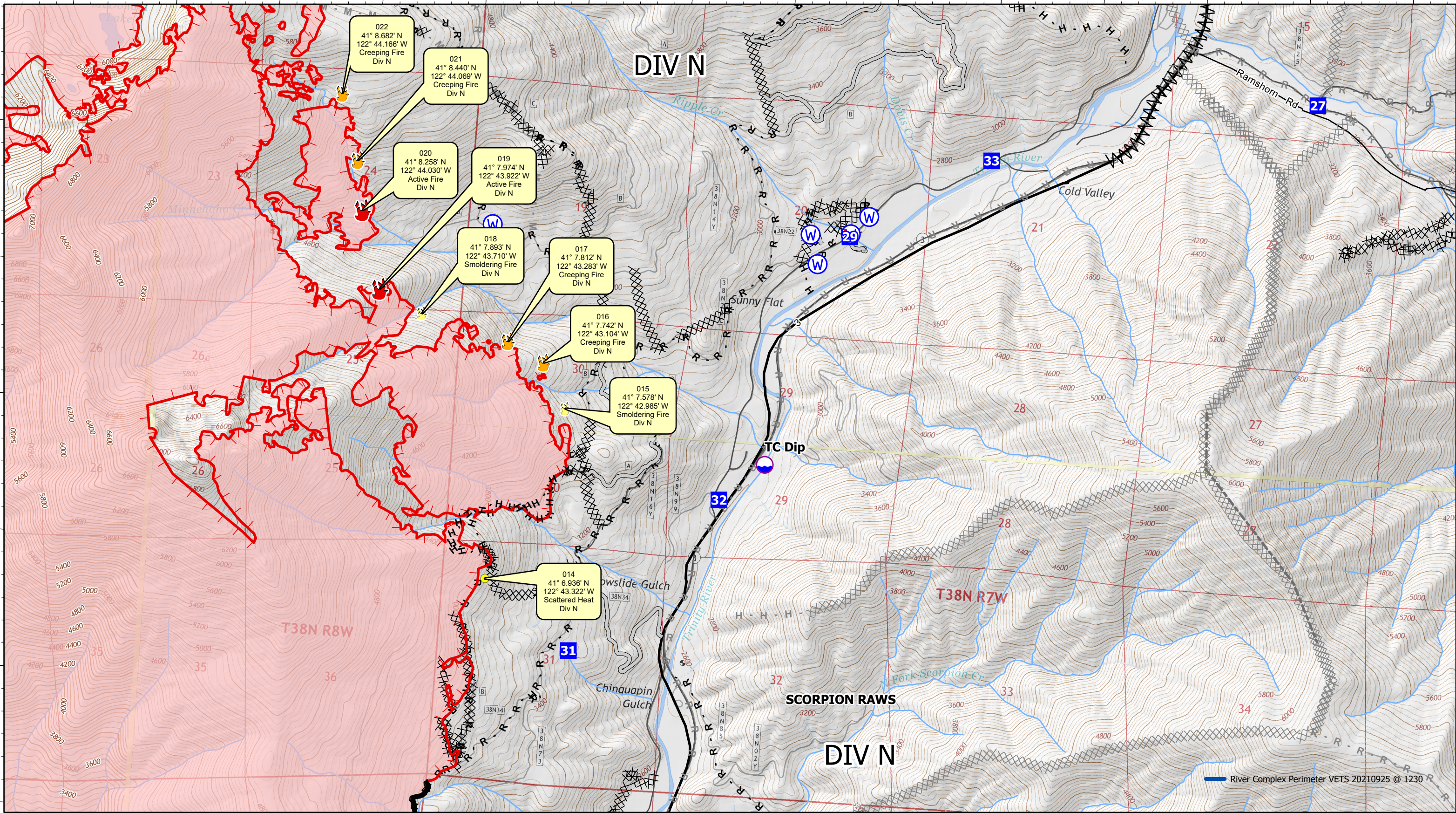


-122°45'

-122°40'



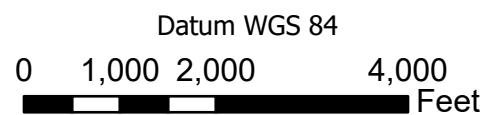
River Complex Perimeter VETS 20210925 @ 1230

-122°45'

-122°40'



- Active Fire - Uncontrolled Spot Fire or Fire Edge
- Creeping Fire - 12" Flame Lengths or Less
- Smoker Brush or Tree
- Hot Spot - Significant Priority
- Hot Spot - Moderate Priority



River Complex

CA-KNF-006385

Infrared Map - Div N - Page 1

Infrared Data Captured on 20210925 @ 1230



September 25, 2021