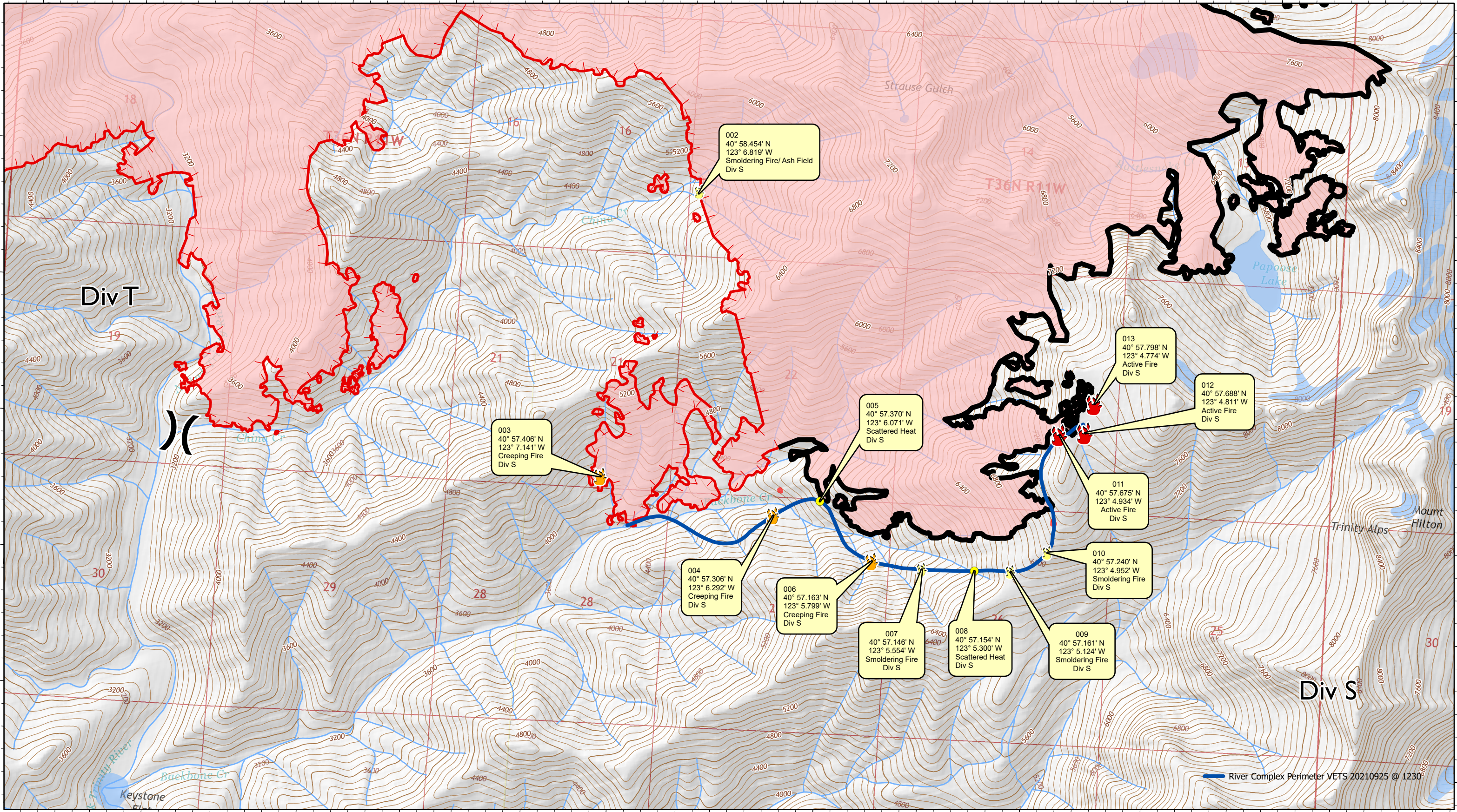


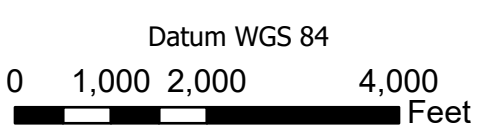
**River Complex**  
CA-KNF-006385

Infrared Map - Index  
Infrared Data Captured on 20210925 @ 1230





- Active Fire - Uncontrolled Spot Fire or Fire Edge
- Creeping Fire - 12" Flame Lengths or Less
- Smoker Brush or Tree
- Hot Spot - Significant Priority
- Hot Spot - Moderate Priority



# River Complex

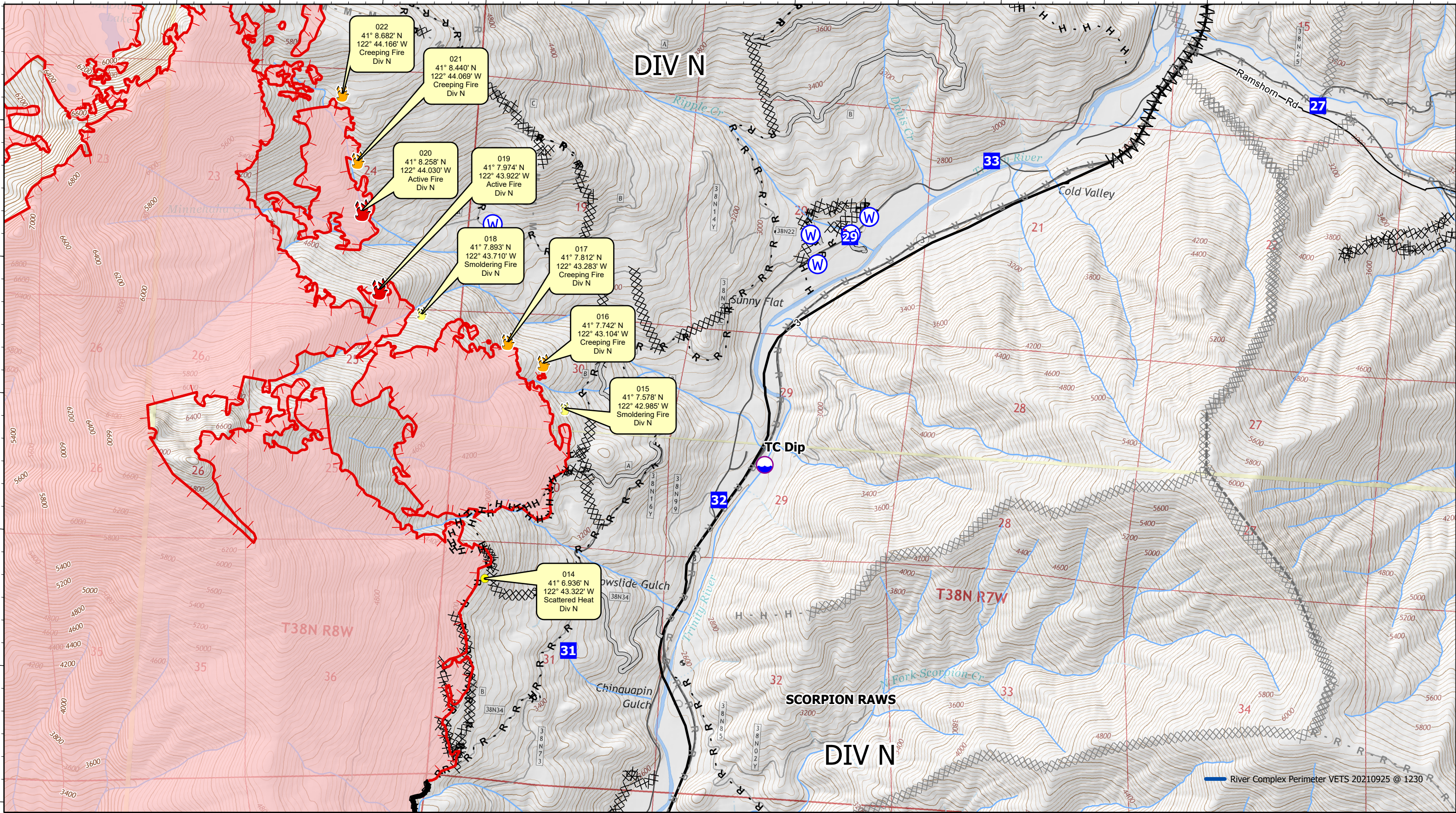
## CA-KNF-006385

Infrared Map - Div S  
 Infrared Data Captured on 20210925 @ 1230



-122°45'

-122°40'



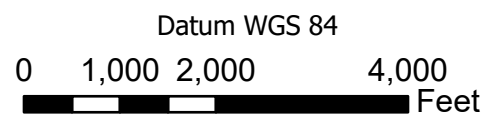
River Complex Perimeter VETS 20210925 @ 1230

-122°45'

-122°40'



- Active Fire - Uncontrolled Spot Fire or Fire Edge
- Creeping Fire - 12" Flame Lengths or Less
- Smoker Brush or Tree
- Hot Spot - Significant Priority
- Hot Spot - Moderate Priority



# River Complex

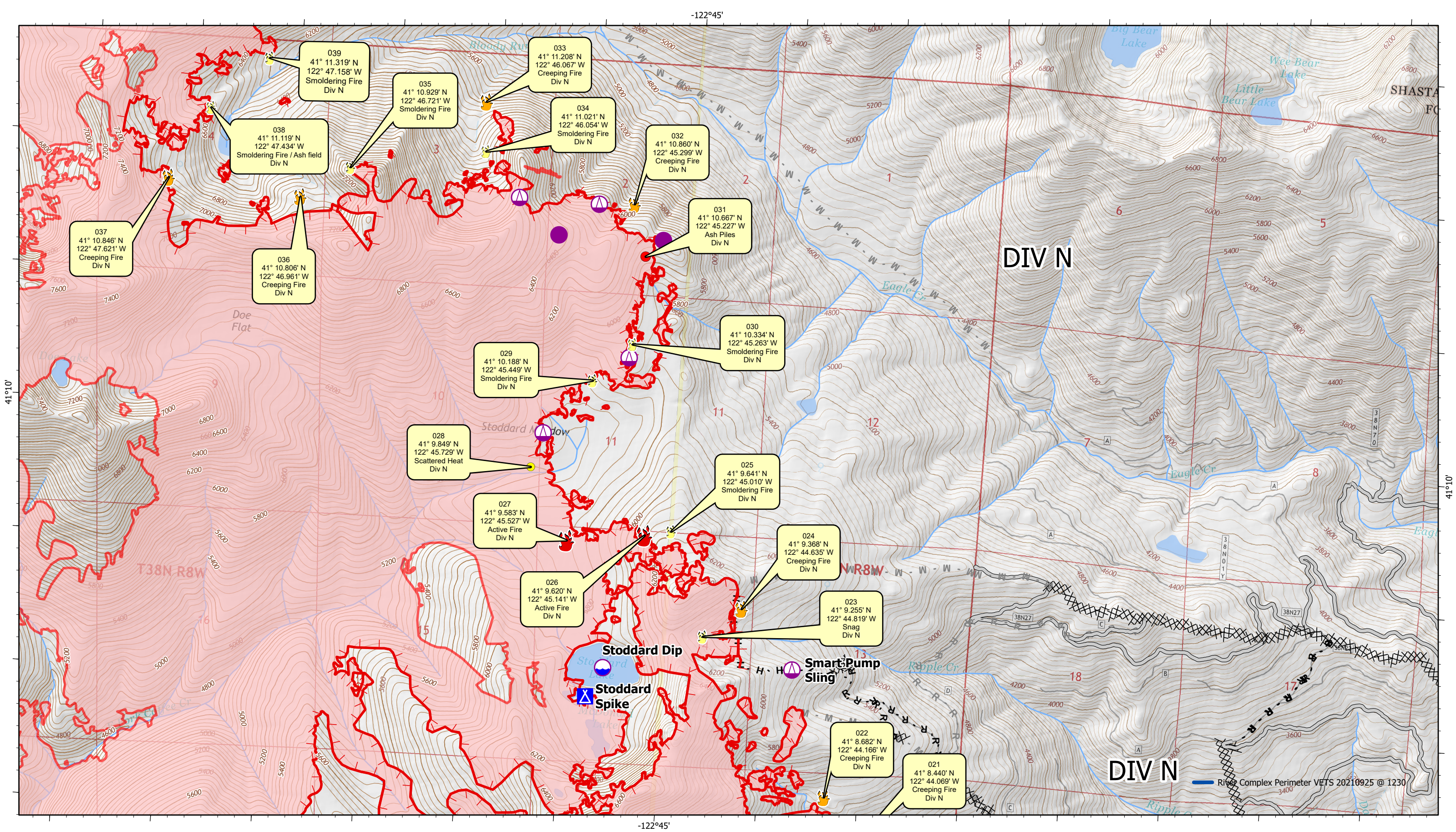
CA-KNF-006385

Infrared Map - Div N - Page 1

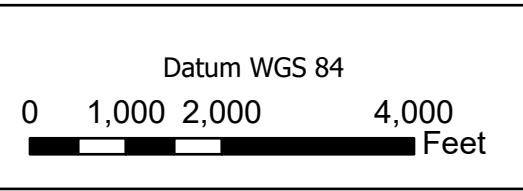
Infrared Data Captured on 20210925 @ 1230



September 25, 2021



- Active Fire - Uncontrolled Spot Fire or Fire Edge
- Creeping Fire - 12" Flame Lengths or Less
- Smoker Brush or Tree
- Hot Spot - Significant Priority
- Hot Spot - Moderate Priority

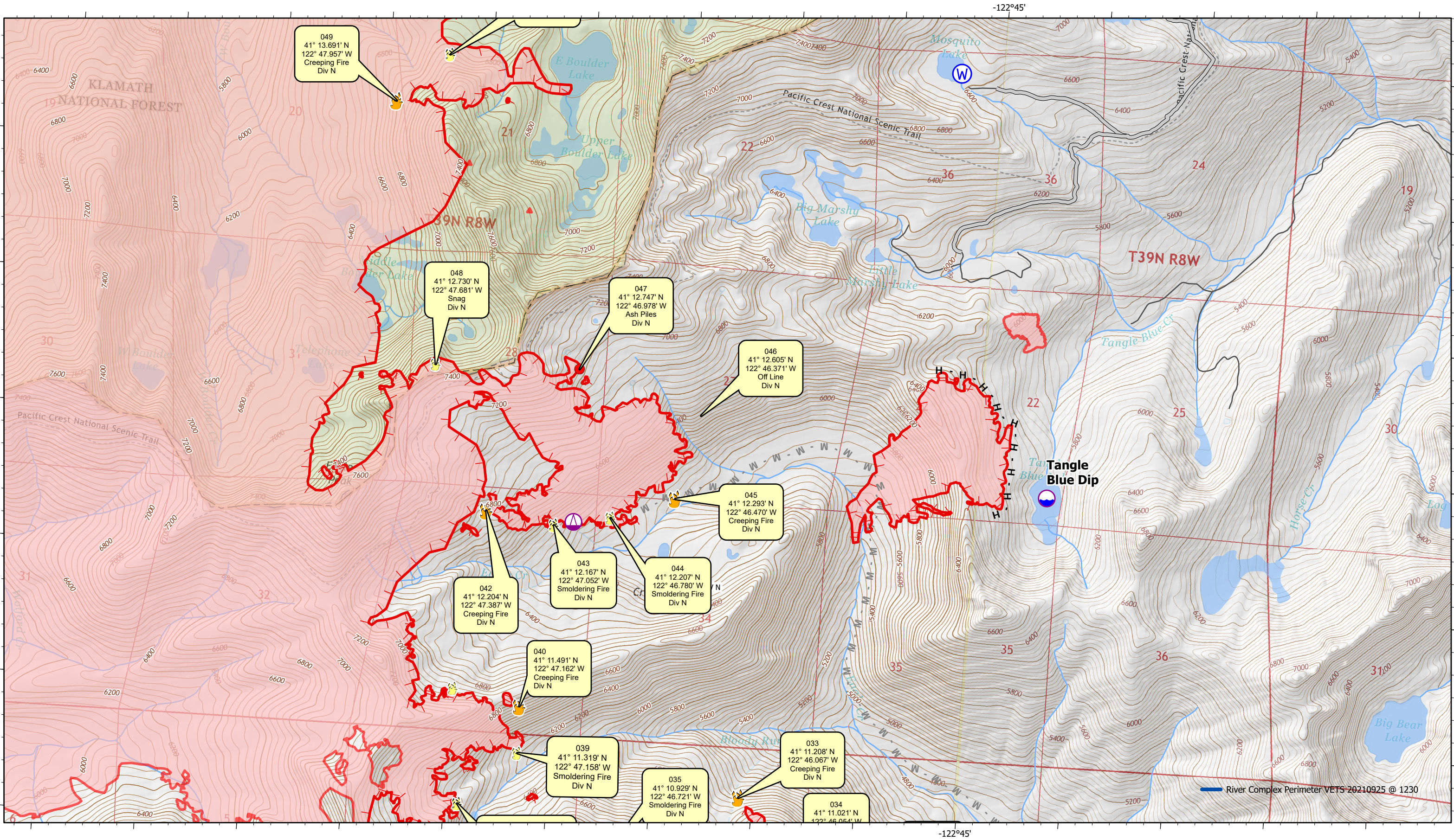


# River Complex

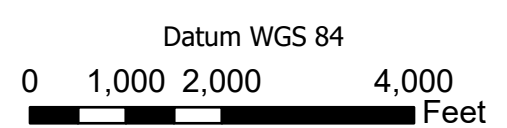
CA-KNF-006385

Infrared Map - Div N - Page 2  
Infrared Data Captured on 20210925 @ 1230





- Active Fire - Uncontrolled Spot Fire or Fire Edge
- Creeping Fire - 12" Flame Lengths or Less
- Smoker Brush or Tree
- Hot Spot - Significant Priority
- Hot Spot - Moderate Priority

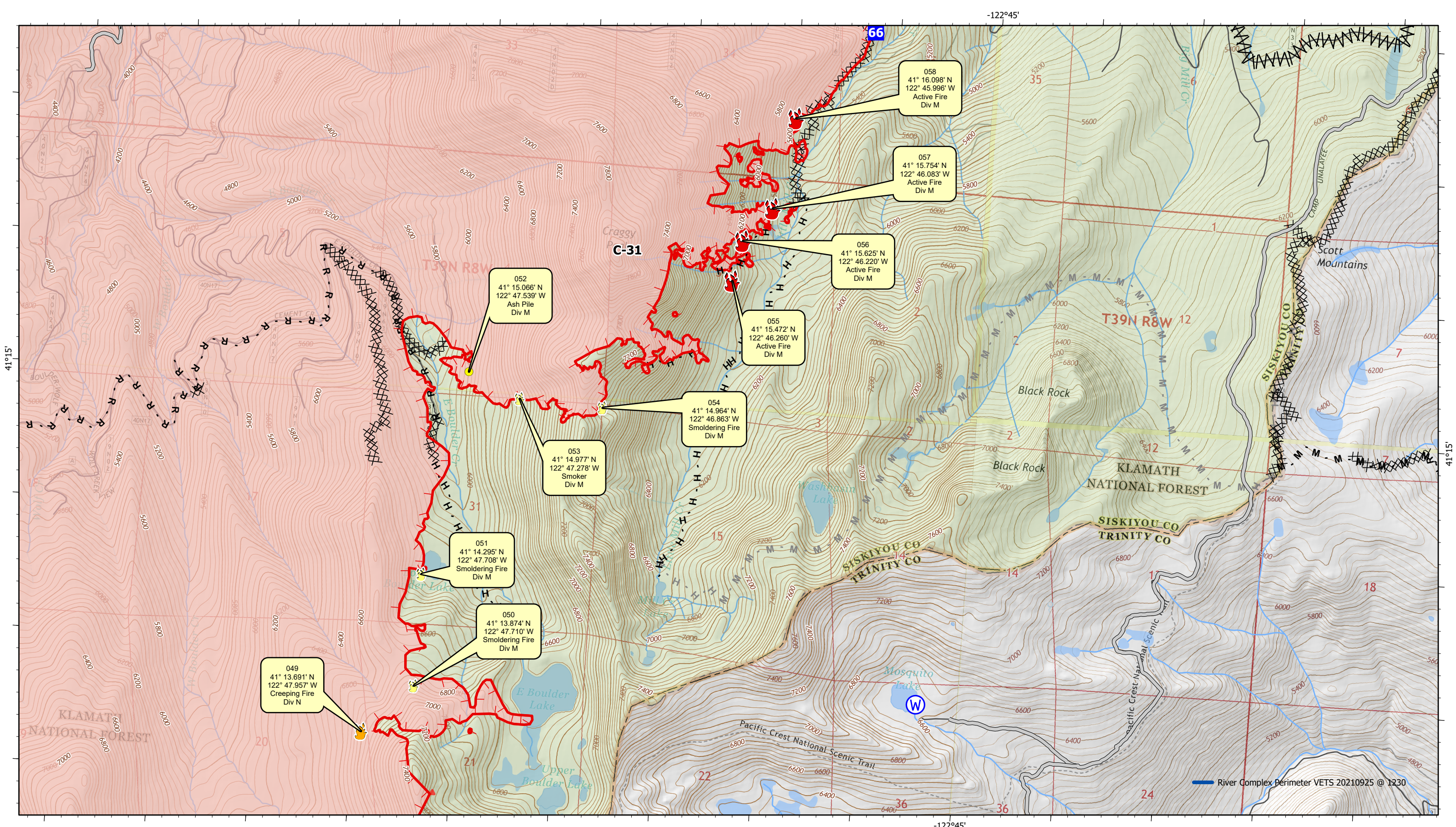


# River Complex

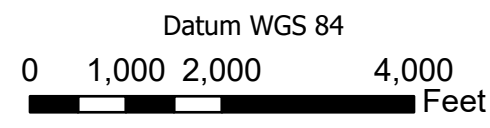
CA-KNF-006385

Infrared Map - Div N - Page 3  
 Infrared Data Captured on 20210925 @ 1230





- Active Fire - Uncontrolled Spot Fire or Fire Edge
- Creeping Fire - 12" Flame Lengths or Less
- Smoker Brush or Tree
- Hot Spot - Significant Priority
- Hot Spot - Moderate Priority






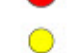

**River Complex**  
CA-KNF-006385

Infrared Map - Div M  
Infrared Data Captured on 20210925 @ 1230





## INFRARED MAP LEGEND

-  Active Fire - Uncontrolled Spot Fire or Fire Edge
-  Creeping Fire - 12" Flame Lengths or Less
-  Smoker Brush or Tree
-  Hot Spot - Significant Priority
-  Hot Spot - Moderate Priority

GPS Coordinates are in Degrees & Decimal Minutes (DD MM.mmmm')

Datum is WGS 84 (unless otherwise noted on map) Ex. N 37° 44.575'  
W -119° 32.101'

Date and Time is when the intelligence was gathered

Heat Sources are normally acquired within a 400 foot strip, 200 feet inside and 200 feet outside the fire line or fire front (wider strips are flown as necessary and are labeled on infrared map).

## LIMITS TO INFRARED AND GPS INFORMATION

Under the best conditions heat sources less than 4 to 6 inches in diameter are inconsistent.

Heat sources under heavy canopy or in large rock piles are difficult to verify.

Accuracy of positive identification of heat sources is 90%

Accuracy of negative identification of heat sources is 10% to 20%. (Depending on canopy).

Accuracy of GPS coordinates is within 50 feet, 90% of the time.

## Infrared Labeling Details:

