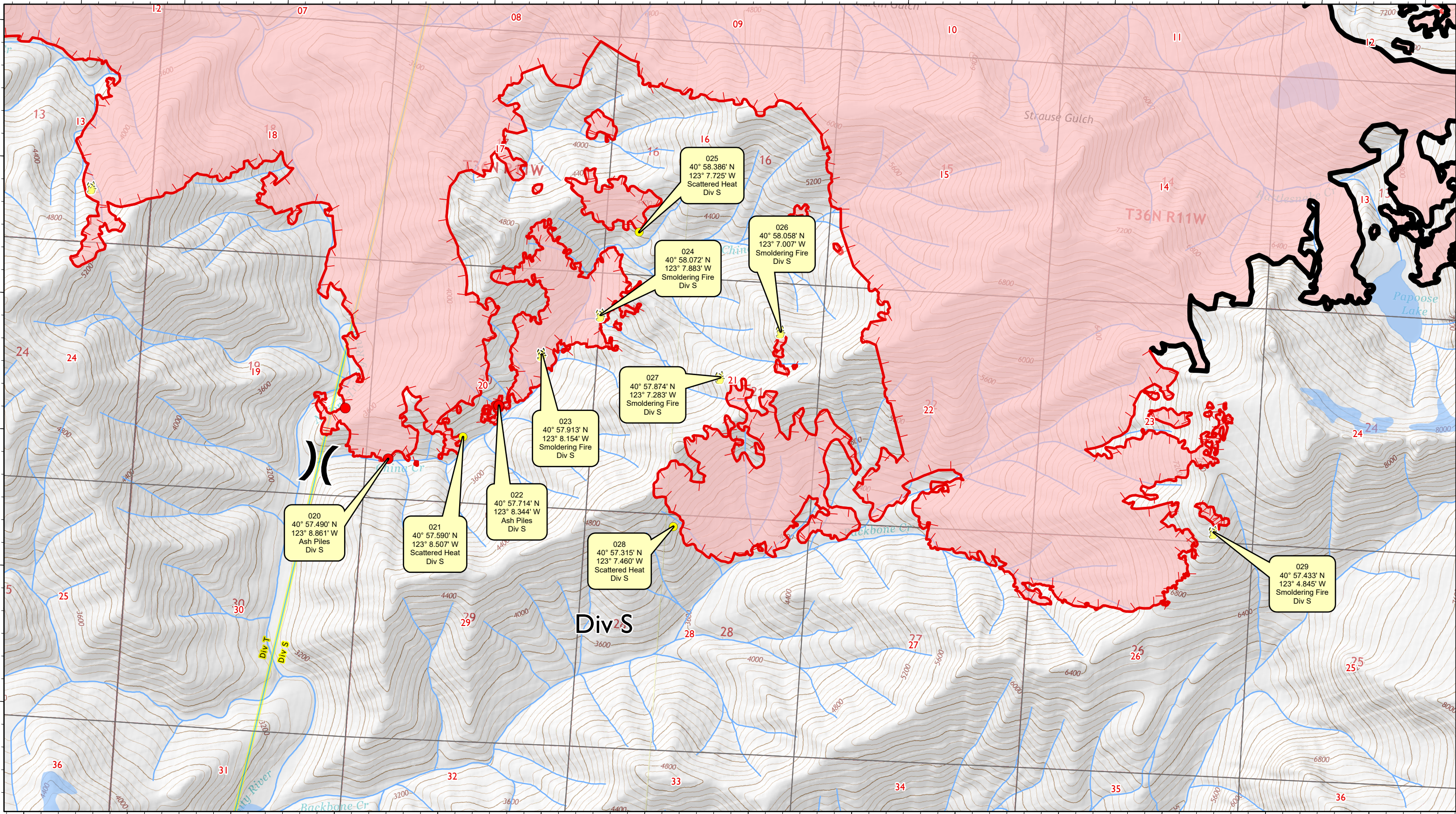


-123°10'

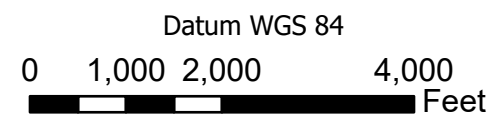
-123°5'



Div S



- Active Fire - Uncontrolled Spot Fire or Fire Edge
- Creeping Fire - 12" Flame Lengths or Less
- Smoker Brush or Tree
- Hot Spot - Significant Priority
- Hot Spot - Moderate Priority



# River Complex

CA-KNF-006385

## Infrared Map - Div S

Infrared Data Captured on 20210928 @ 1045

