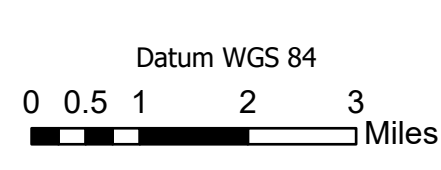


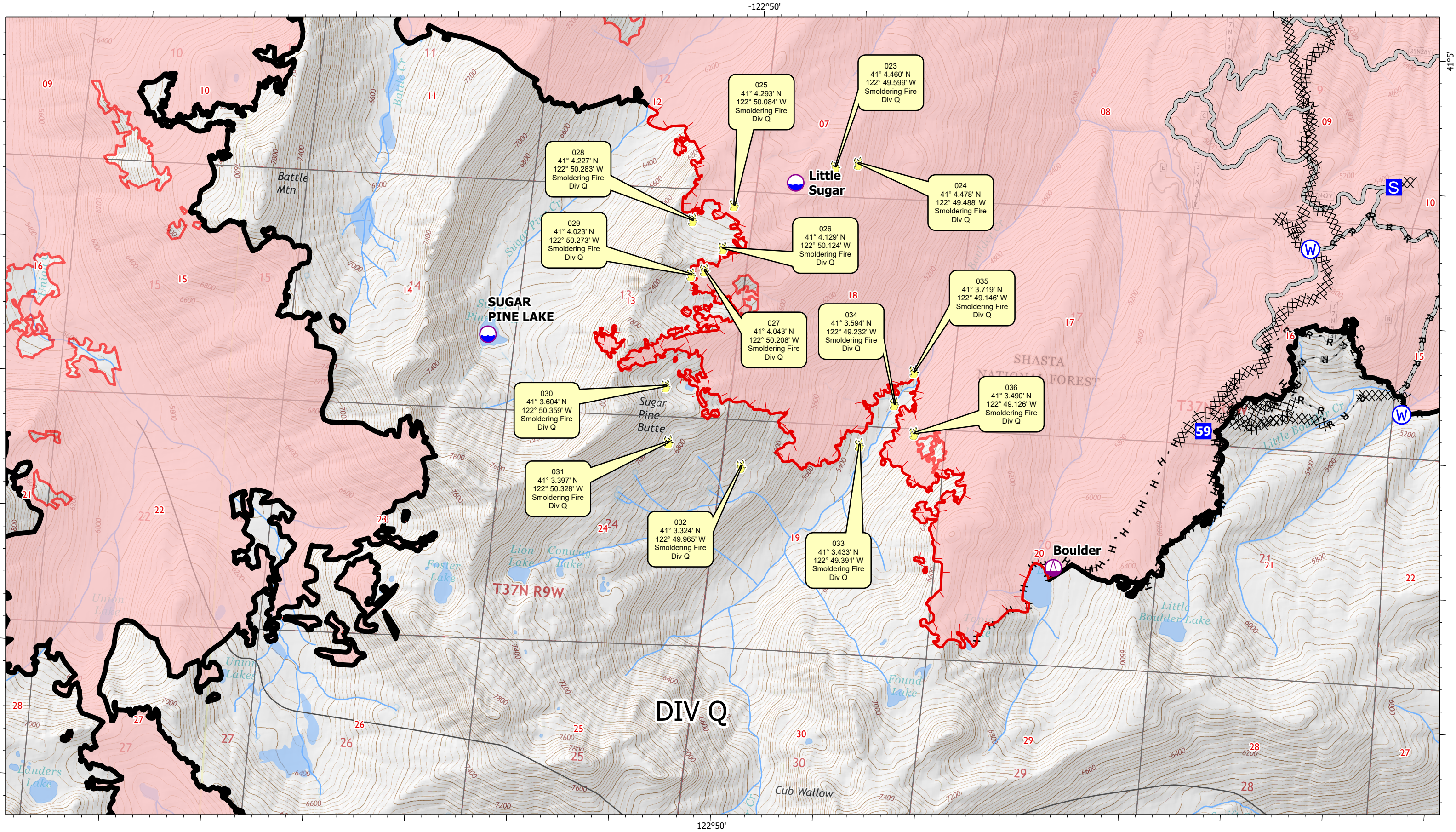
- Active Fire - Uncontrolled Spot Fire or Fire Edge
- Creeping Fire - 12" Flame Lengths or Less
- Smoker Brush or Tree
- Hot Spot - Significant Priority
- Hot Spot - Moderate Priority



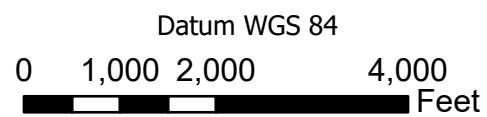
River Complex
CA-KNF-006385

Infrared Index Map
Infrared Data Captured on 20211001 @ 1230





- Active Fire - Uncontrolled Spot Fire or Fire Edge
- Creeping Fire - 12" Flame Lengths or Less
- Smoker Brush or Tree
- Hot Spot - Significant Priority
- Hot Spot - Moderate Priority



River Complex

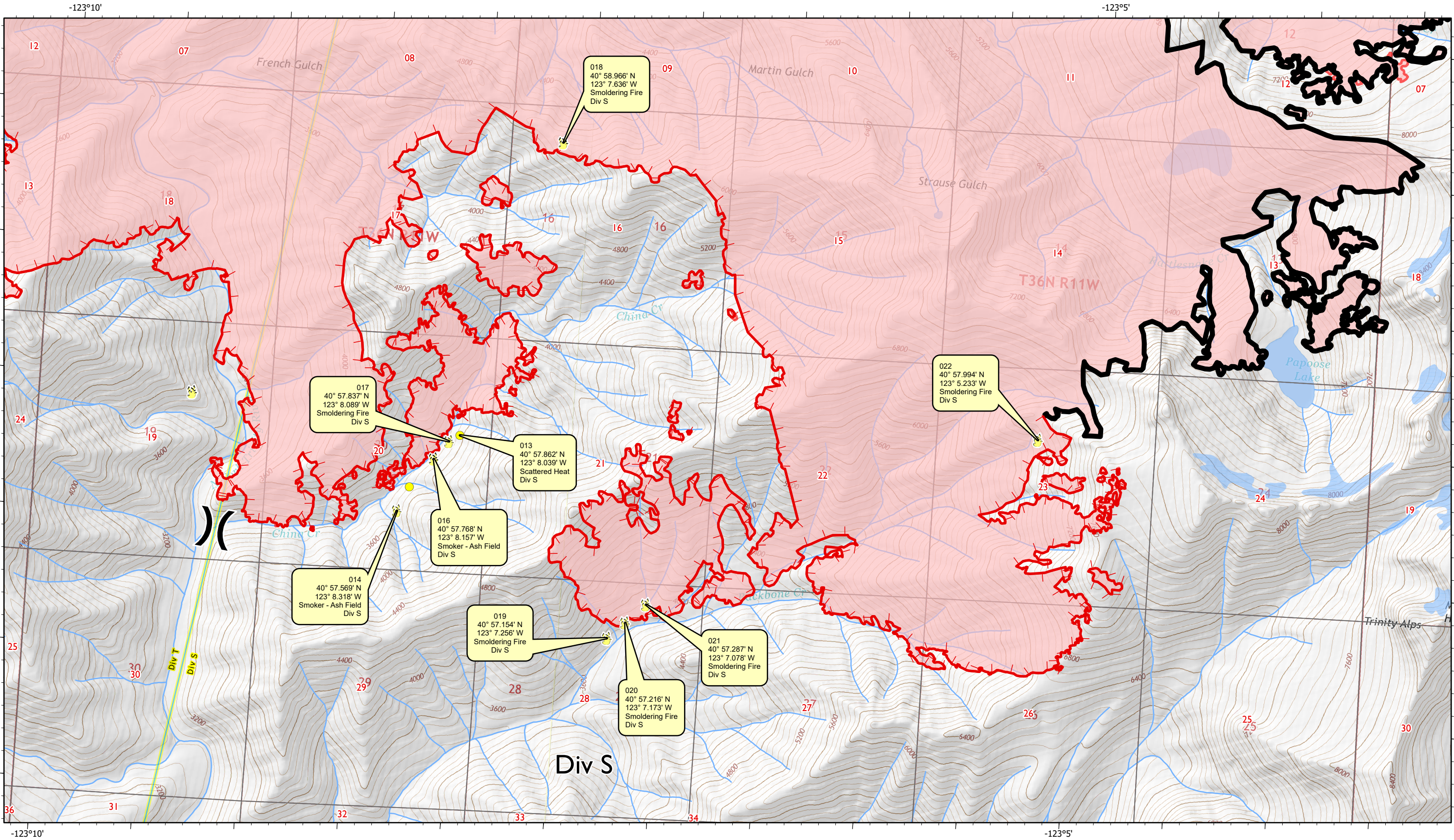
CA-KNF-006385

Infrared Map - Div Q

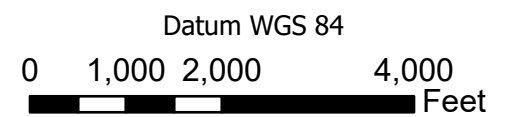
Infrared Data Captured on 20211001 @ 1230



October 1, 2021



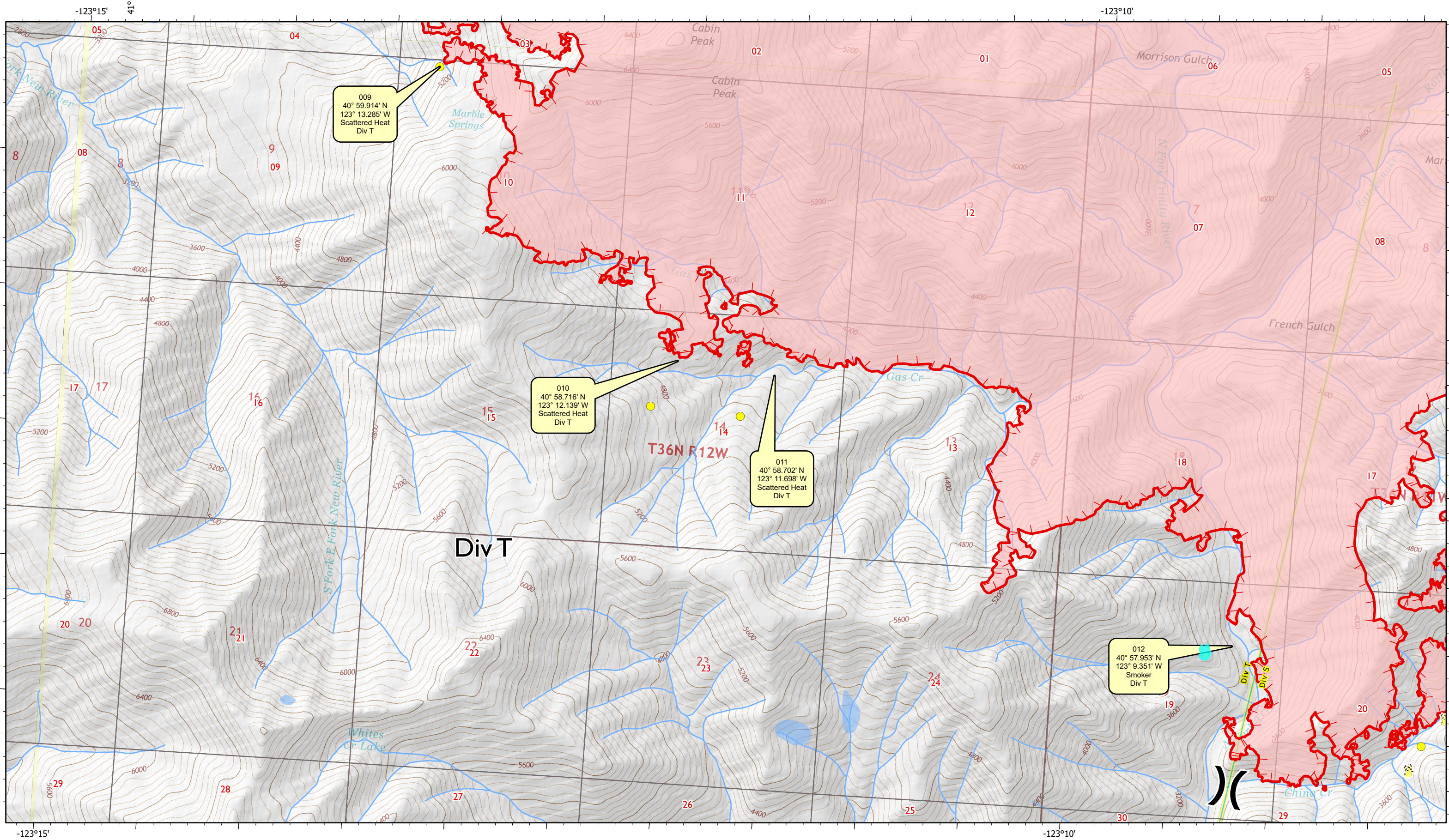
- Active Fire - Uncontrolled Spot Fire or Fire Edge
- Creeping Fire - 12" Flame Lengths or Less
- Smoker Brush or Tree
- Hot Spot - Significant Priority
- Hot Spot - Moderate Priority








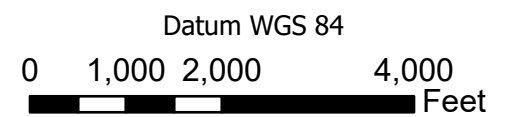
River Complex
CA-KNF-006385

Infrared Map - Div S
Infrared Data Captured on 20211001 @ 1230





-  Active Fire - Uncontrolled Spot Fire or Fire Edge
-  Creeping Fire - 12" Flame Lengths or Less
-  Smoker Brush or Tree
-  Hot Spot - Significant Priority
-  Hot Spot - Moderate Priority



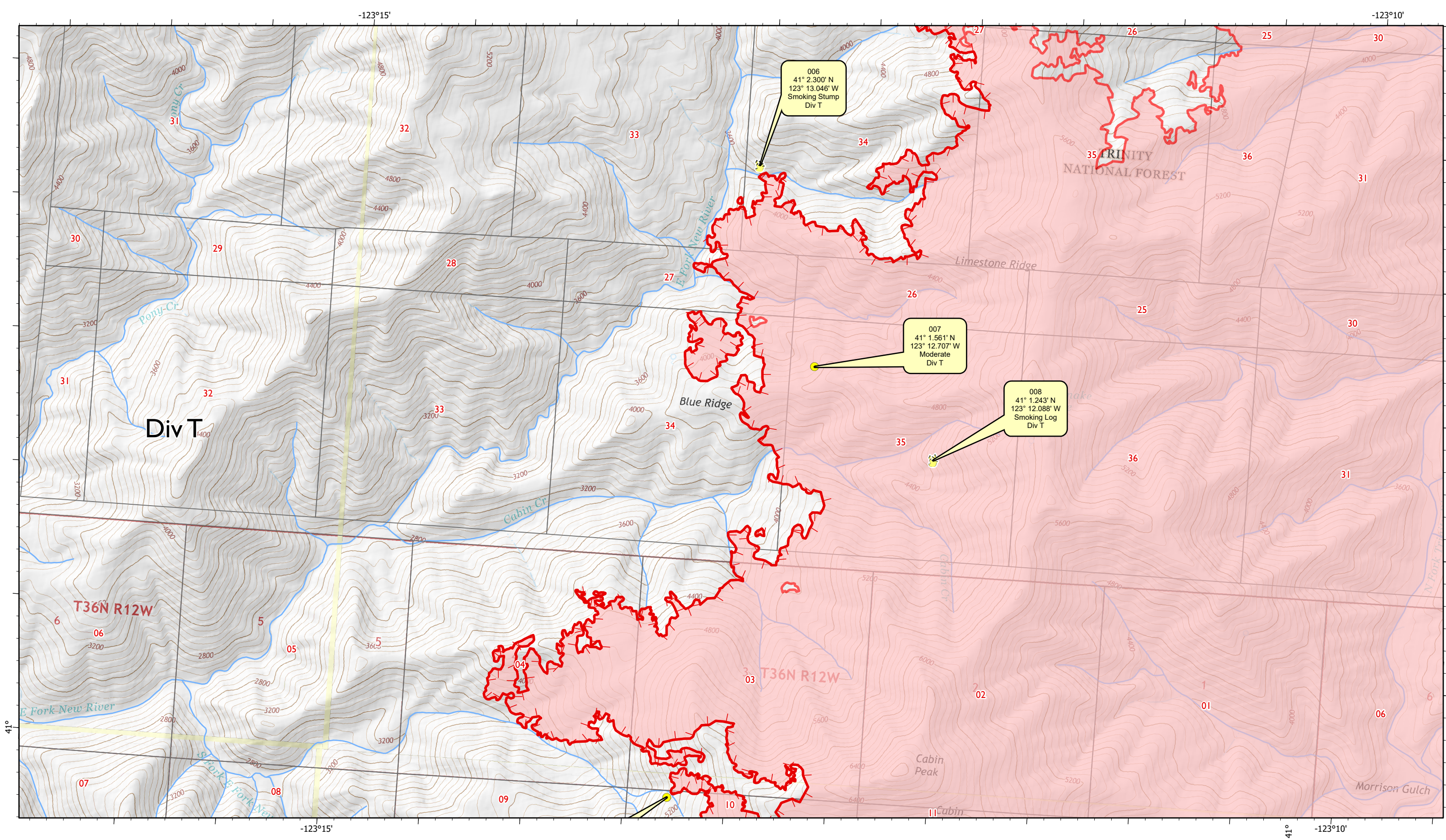
River Complex

CA-KNF-006385

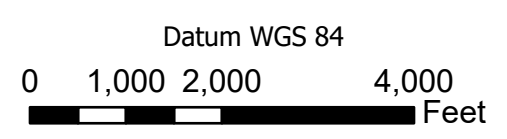
Infrared Map - Div T - Page 1

Infrared Data Captured on 20211001 @ 1230





- Active Fire - Uncontrolled Spot Fire or Fire Edge
- Creeping Fire - 12" Flame Lengths or Less
- Smoker Brush or Tree
- Hot Spot - Significant Priority
- Hot Spot - Moderate Priority



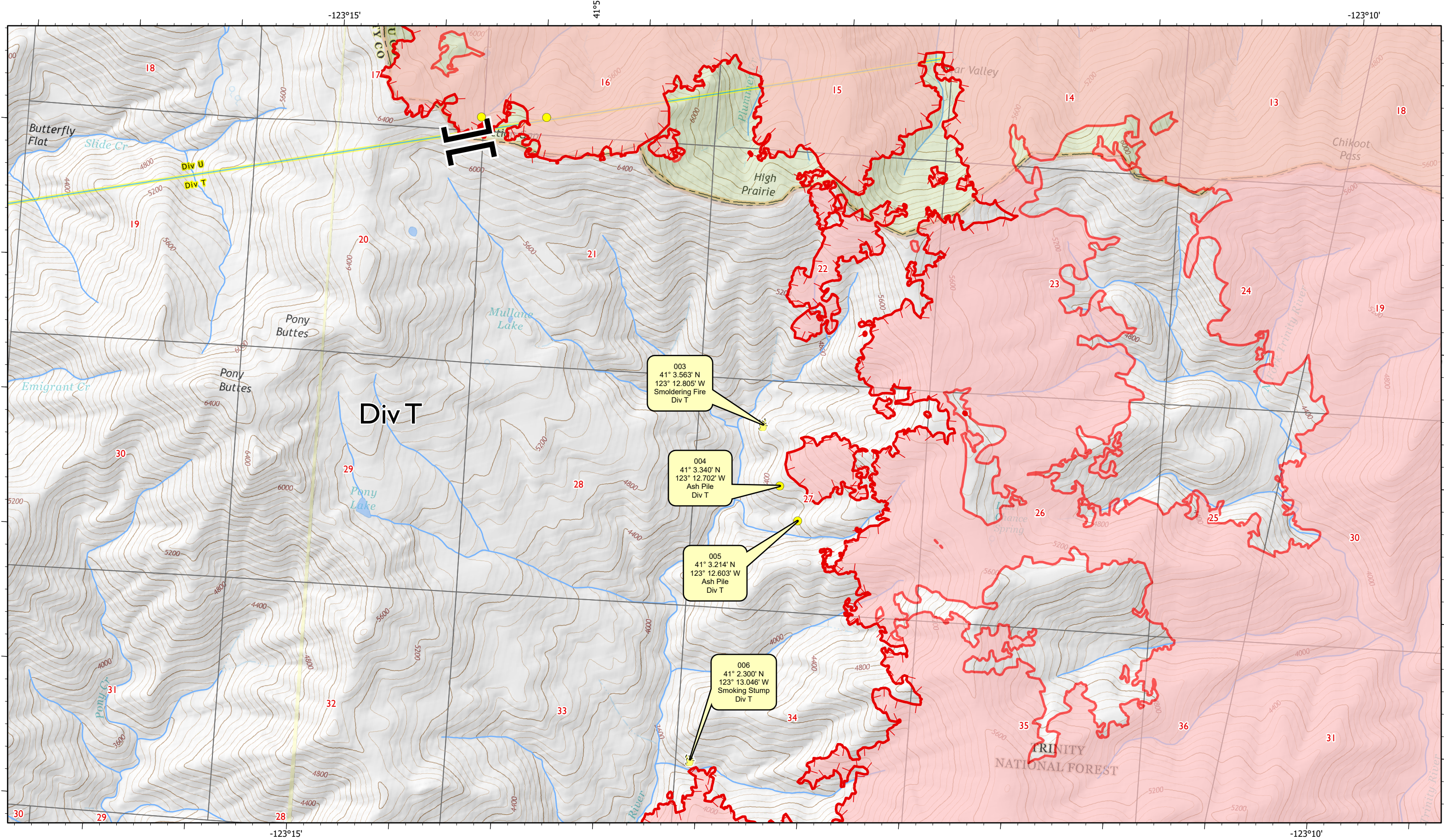
River Complex

CA-KNF-006385

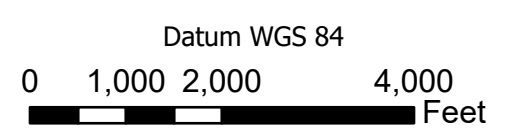
Infrared Map - Div T - Page 2

Infrared Data Captured on 20211001 @ 1230





- Active Fire - Uncontrolled Spot Fire or Fire Edge
- Creeping Fire - 12" Flame Lengths or Less
- Smoker Brush or Tree
- Hot Spot - Significant Priority
- Hot Spot - Moderate Priority



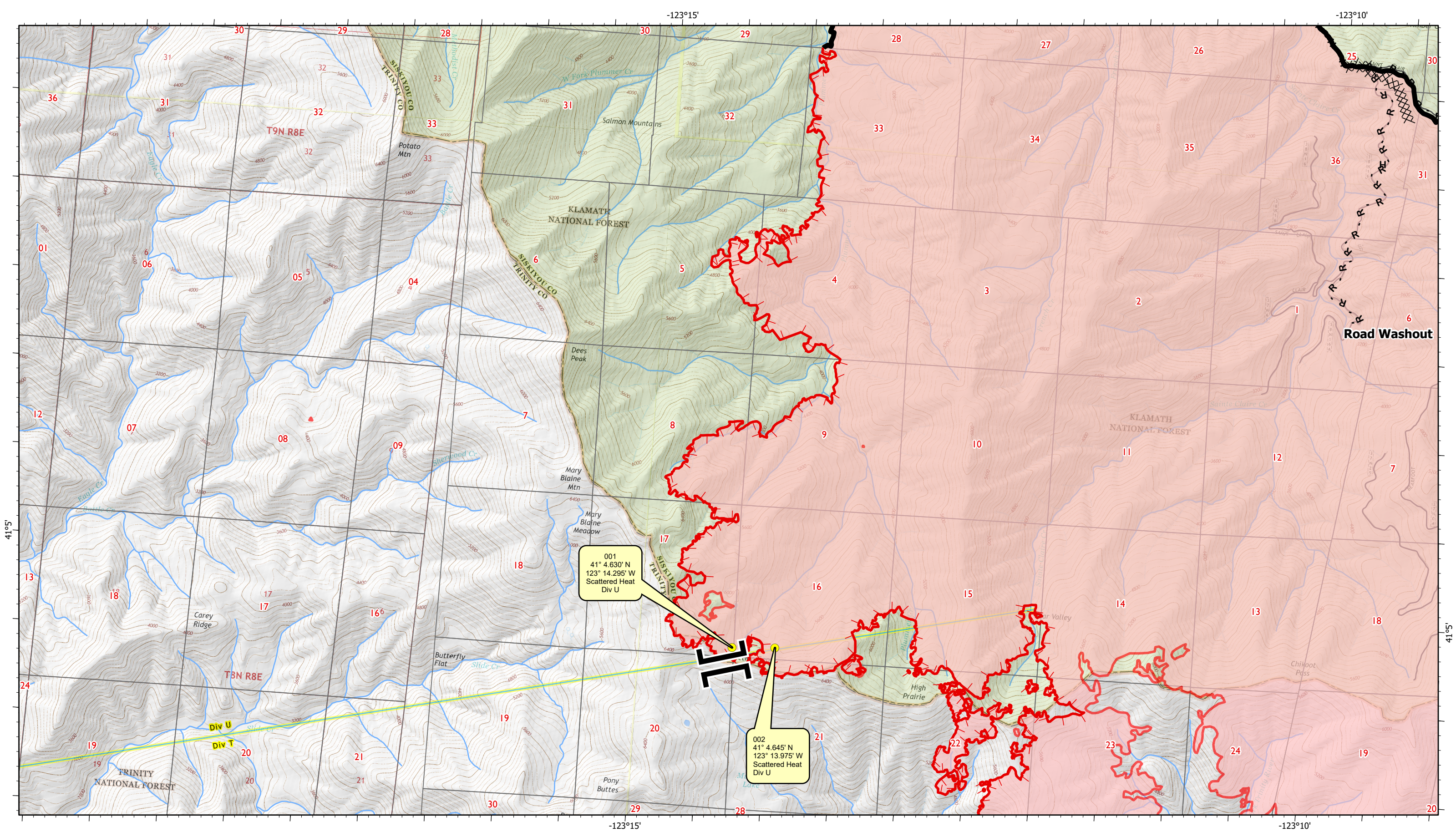
River Complex

CA-KNF-006385

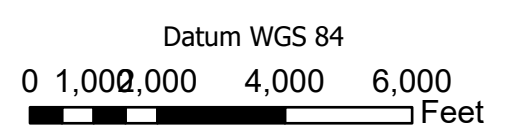
Infrared Map - Div T - Page 3

Infrared Data Captured on 20211001 @ 1230





- Active Fire - Uncontrolled Spot Fire or Fire Edge
- Creeping Fire - 12" Flame Lengths or Less
- Smoker Brush or Tree
- Hot Spot - Significant Priority
- Hot Spot - Moderate Priority



River Complex

CA-KNF-006385




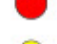

Infrared Map - Div U

Infrared Data Captured on 20211001 @ 1230





INFRARED MAP LEGEND

-  Active Fire - Uncontrolled Spot Fire or Fire Edge
-  Creeping Fire - 12" Flame Lengths or Less
-  Smoker Brush or Tree
-  Hot Spot - Significant Priority
-  Hot Spot - Moderate Priority

GPS Coordinates are in Degrees & Decimal Minutes (DD MM.mmmm')

Datum is WGS 84 (unless otherwise noted on map) Ex. N 37° 44.575'
W -119° 32.101'

Date and Time is when the intelligence was gathered

Heat Sources are normally acquired within a 400 foot strip, 200 feet inside and 200 feet outside the fire line or fire front (wider strips are flown as necessary and are labeled on infrared map).

LIMITS TO INFRARED AND GPS INFORMATION

Under the best conditions heat sources less than 4 to 6 inches in diameter are inconsistent.

Heat sources under heavy canopy or in large rock piles are difficult to verify.

Accuracy of positive identification of heat sources is 90%

Accuracy of negative identification of heat sources is 10% to 20%. (Depending on canopy).

Accuracy of GPS coordinates is within 50 feet, 90% of the time.

Infrared Labeling Details:

