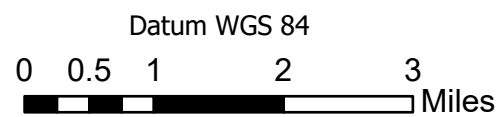


- Active Fire - Uncontrolled Spot Fire or Fire Edge
- Creeping Fire - 12" Flame Lengths or Less
- Smoker Brush or Tree
- Hot Spot - Significant Priority
- Hot Spot - Moderate Priority



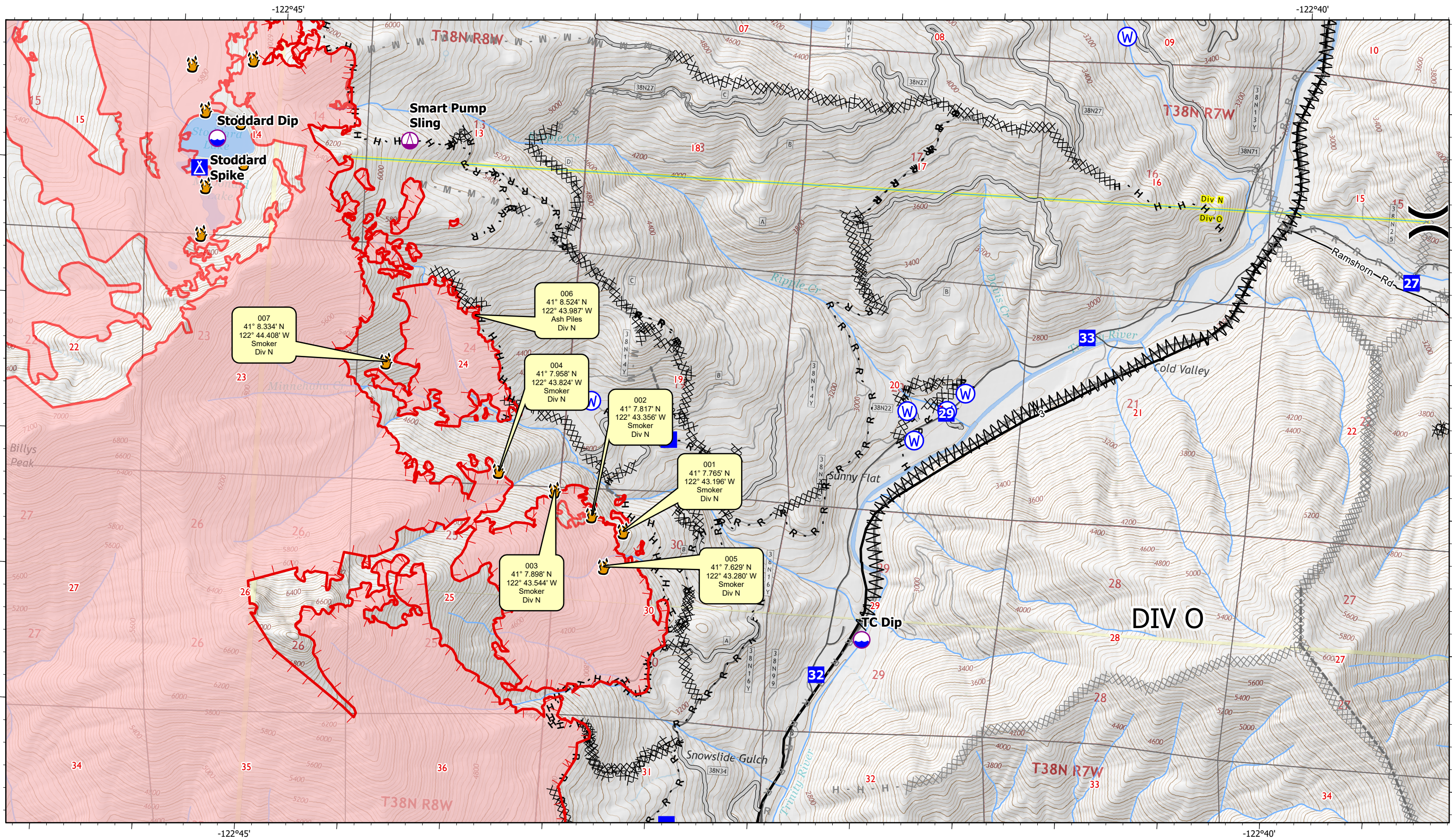
River Complex

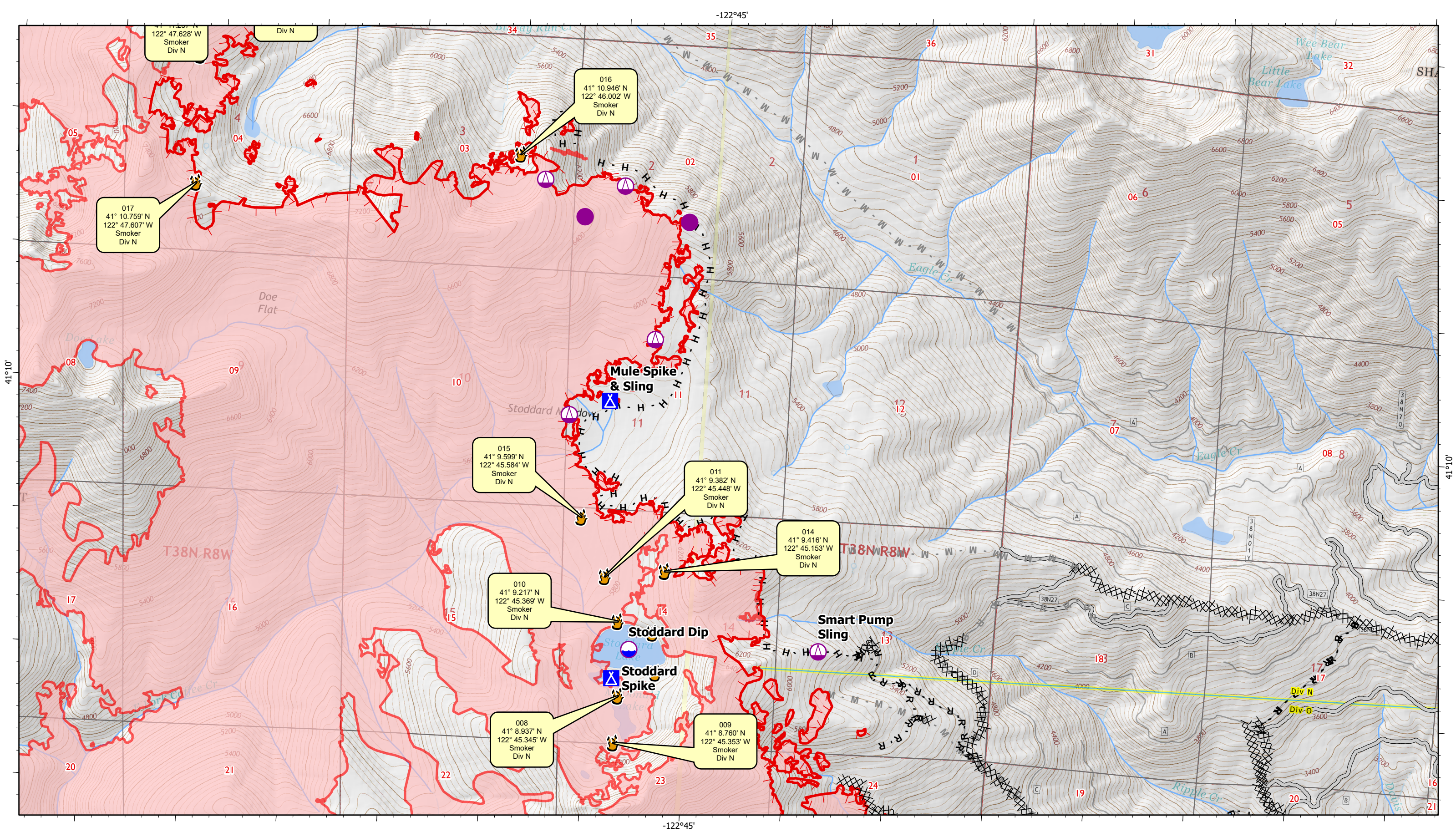
CA-KNF-006385

Infrared Index Map

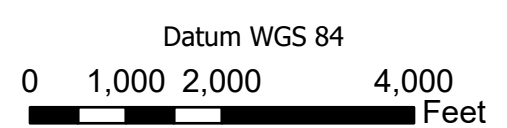
Infrared Data Captured on 20211002 @ 1330







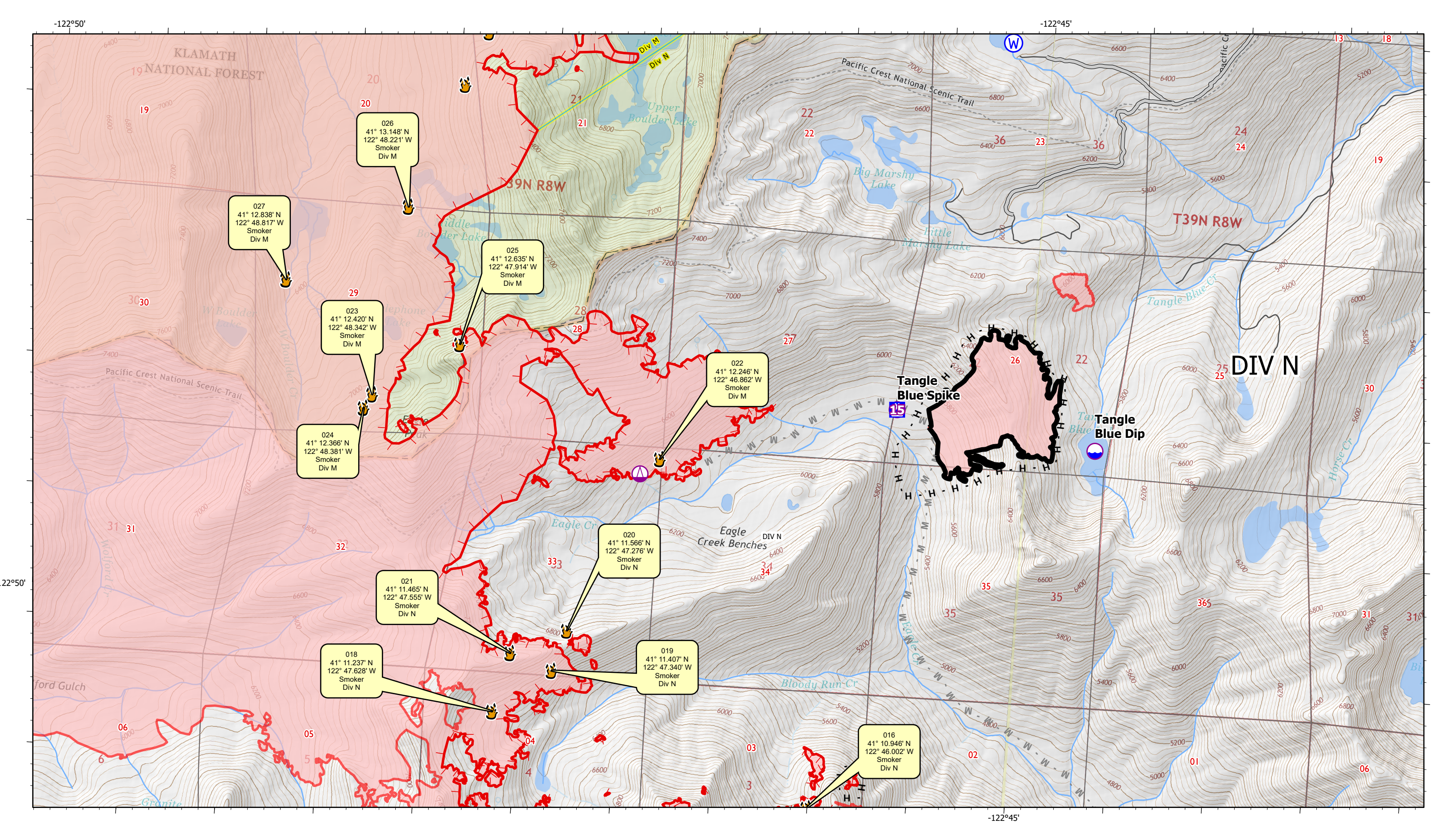
- Active Fire - Uncontrolled Spot Fire or Fire Edge
- Creeping Fire - 12" Flame Lengths or Less
- Smoker Brush or Tree
- Hot Spot - Significant Priority
- Hot Spot - Moderate Priority



River Complex
CA-KNF-006385

Infrared Map - Div N - Page 1
Infrared Data Captured on 20211002 @ 1330





026
41° 13.148' N
122° 48.221' W
Smoker
Div M

027
41° 12.838' N
122° 48.817' W
Smoker
Div M

023
41° 12.420' N
122° 48.342' W
Smoker
Div M

024
41° 12.366' N
122° 48.381' W
Smoker
Div M

025
41° 12.635' N
122° 47.914' W
Smoker
Div M

022
41° 12.246' N
122° 46.862' W
Smoker
Div M

021
41° 11.465' N
122° 47.555' W
Smoker
Div N

020
41° 11.566' N
122° 47.276' W
Smoker
Div N

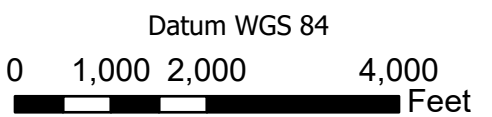
018
41° 11.237' N
122° 47.628' W
Smoker
Div N

019
41° 11.407' N
122° 47.340' W
Smoker
Div N

016
41° 10.946' N
122° 46.002' W
Smoker
Div N



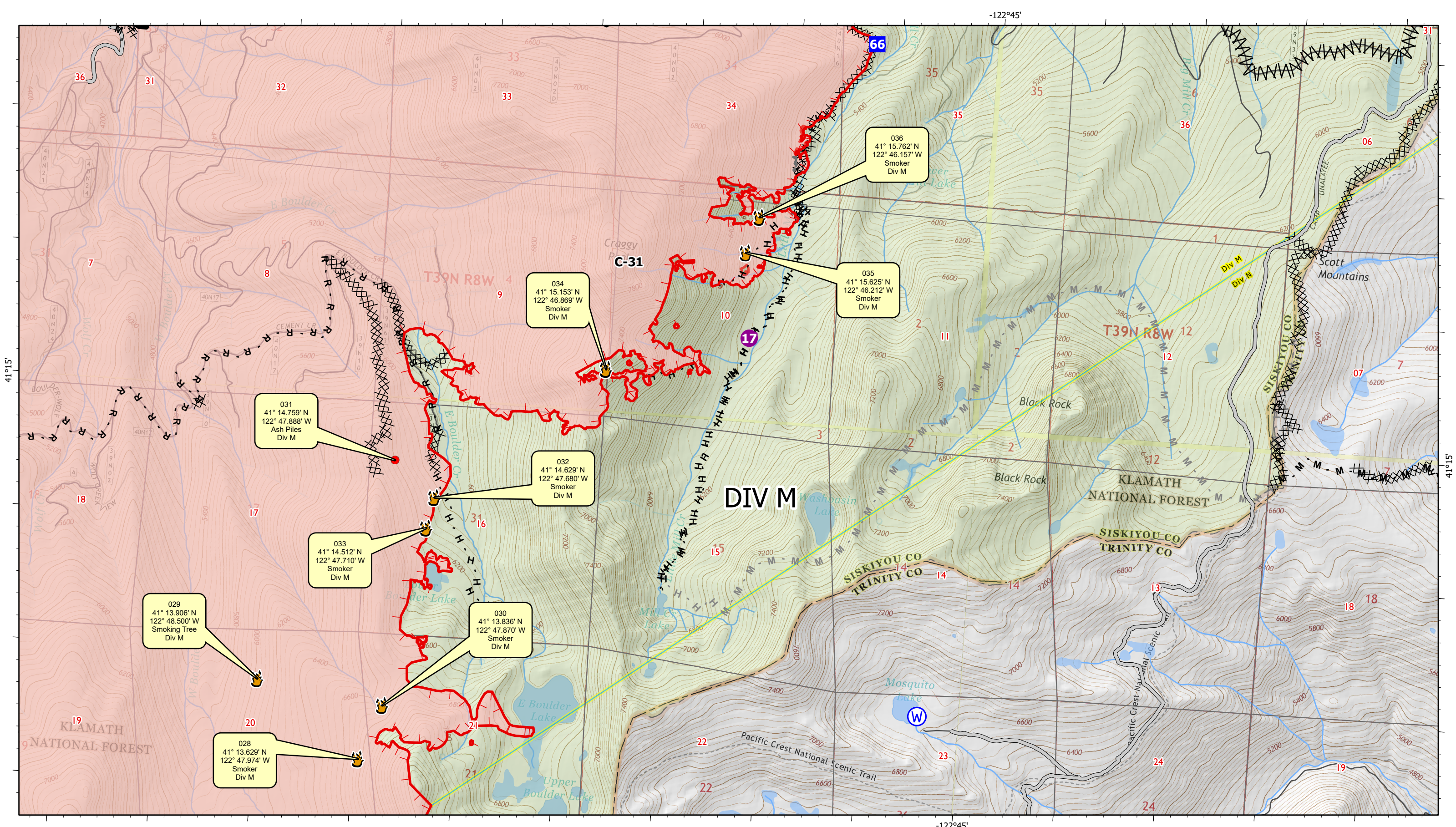
- Active Fire - Uncontrolled Spot Fire or Fire Edge
- Creeping Fire - 12" Flame Lengths or Less
- Smoker Brush or Tree
- Hot Spot - Significant Priority
- Hot Spot - Moderate Priority



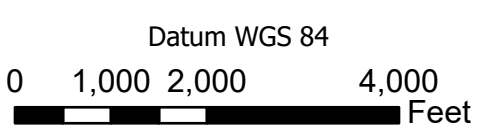
River Complex
CA-KNF-006385

Infrared Map - Div N - Page 2
Infrared Data Captured on 20211002 @ 1330





- Active Fire - Uncontrolled Spot Fire or Fire Edge
- Creeping Fire - 12" Flame Lengths or Less
- Smoker Brush or Tree
- Hot Spot - Significant Priority
- Hot Spot - Moderate Priority






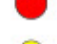

River Complex
CA-KNF-006385

Infrared Map - Div M
Infrared Data Captured on 20211002 @ 1330





INFRARED MAP LEGEND

-  Active Fire - Uncontrolled Spot Fire or Fire Edge
-  Creeping Fire - 12" Flame Lengths or Less
-  Smoker Brush or Tree
-  Hot Spot - Significant Priority
-  Hot Spot - Moderate Priority

GPS Coordinates are in Degrees & Decimal Minutes (DD MM.mmmm')

Datum is WGS 84 (unless otherwise noted on map) Ex. N 37° 44.575'
W -119° 32.101'

Date and Time is when the intelligence was gathered

Heat Sources are normally acquired within a 400 foot strip, 200 feet inside and 200 feet outside the fire line or fire front (wider strips are flown as necessary and are labeled on infrared map).

LIMITS TO INFRARED AND GPS INFORMATION

Under the best conditions heat sources less than 4 to 6 inches in diameter are inconsistent.

Heat sources under heavy canopy or in large rock piles are difficult to verify.

Accuracy of positive identification of heat sources is 90%

Accuracy of negative identification of heat sources is 10% to 20%. (Depending on canopy).

Accuracy of GPS coordinates is within 50 feet, 90% of the time.

Infrared Labeling Details:

