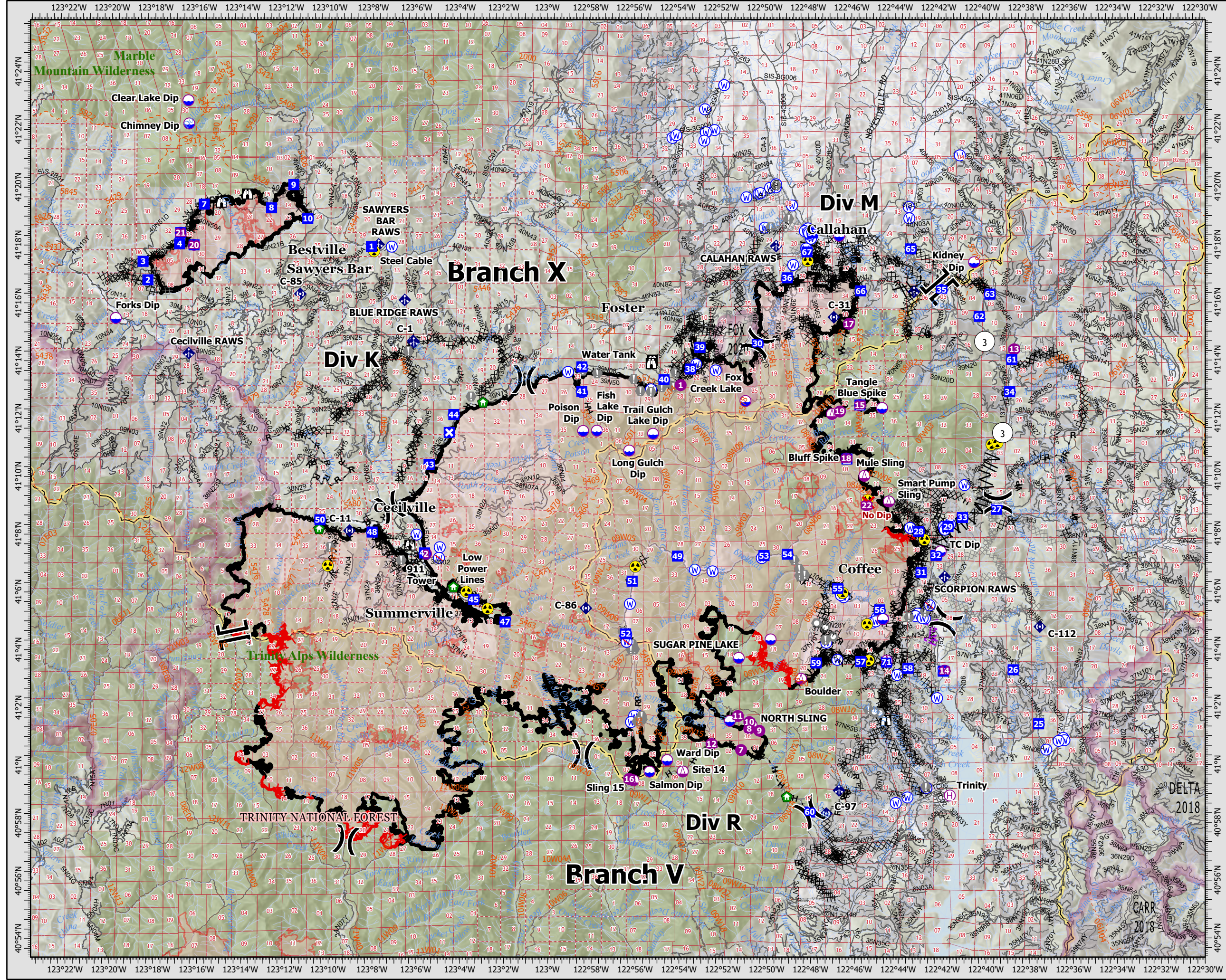


# OPERATIONS

## River Complex

CA-KNF-006385  
10/06/2021 07:00

198,685 acres  
IR updated 10/04/21 21:00



- || Branch Break
- || Division Break
- ⊕ Helibase
- Helispot
- Landmark
- Lookout
- ◆ Mobile Weather Unit
- ◇ Repeater
- ⚠ Aerial Hazard
- ⛔ Closure
- ⊙ Dip Site
- Drop Point
- ⚡ Hazard
- Ⓜ Restricted Water Source
- Ⓜ Sling Site
- Ⓜ Structure Wrap
- Ⓜ Value at Risk
- Ⓜ Water Source
- ✗ No Dip
- Completed Burnout
- Completed Dozer Line
- Completed Fuel Break
- Completed Hand Line
- Completed Mixed Construction Line
- Completed Plow Line
- Completed Road as Line
- Planned Dozer Line
- Planned Hand Line
- Planned Mixed Construction Line
- Planned Road as Line
- Access or Improved Road
- Aerial Hazard
- Fire Edge
- Contained Line
- Wildfire Daily Fire Perimeter
- Fire History
- County
- USFS Wilderness
- Forest Service
- Private Timberland
- World Hillshade

Forest Service U.S. Department of Agriculture

California Interagency Resource Management Team

15

0 1.25 2.5 5 Miles

Datum: North American 1983