

INCIDENT ACTION PLAN

RIVER COMPLEX



CA-KNF-006385
P5N7CM (0505)



OPERATIONAL PERIOD

10/14/2021 0700

to

10/15/2021 0700

INCIDENT OBJECTIVES (ICS 202)

1. Incident Name: <p style="text-align: center;">RIVER COMPLEX</p>	2. Operational Period:	Date From: 10/14/2021 Time From: 0700	Date To: 10/15/2021 Time To: 0700
---	-------------------------------	--	--------------------------------------

3. Objective(s):

Leader's Intent

Implement a full suppression strategy on the fires within the River Complex. Values at risk include human safety, communities, private timberlands, critical infrastructure, associated improvements, and wilderness resources. Apply tactics that offer the highest probability of success commensurate with resource availability.

Management Objectives

Provide for firefighter and public safety through hazard recognition and application of the risk management process.

Continue to provide timely information to all affected agency partners, cooperators, and to the public.

Coordinate suppression and repair activities with incident Resource Advisors to minimize impacts to wilderness, natural and cultural resources, and to work towards meeting suppression repair standards for turnover to local districts.

Reduce risk and limit exposure to infectious diseases by minimizing large group settings, reinforcing social distancing, wearing face coverings, and handwashing.

Control Objectives

Keep the Cronan Fire within existing control lines.

Keep the Haypress Fire within existing control lines.

Work towards meeting 100% completion of suppression repair guidelines.

5. Site Safety Plan Required? Yes No

Approved Site Safety Plan(s) Located at:

6. Incident Action Plan

- | | | | |
|--|--|--|--|
| <input checked="" type="checkbox"/> ICS 203 | <input type="checkbox"/> ICS 215A | <input type="checkbox"/> ICS 205 A | <input checked="" type="checkbox"/> ICS 206WF |
| <input checked="" type="checkbox"/> ICS 204 | <input checked="" type="checkbox"/> ICS 220 | <input checked="" type="checkbox"/> Training Message | <input type="checkbox"/> PIO Message |
| <input checked="" type="checkbox"/> ICS 205 | <input type="checkbox"/> HR Message | <input checked="" type="checkbox"/> Travel Map | <input type="checkbox"/> |
| <input checked="" type="checkbox"/> ICS 206 | <input checked="" type="checkbox"/> Weather Forecast | <input checked="" type="checkbox"/> Demob List | <input checked="" type="checkbox"/> READ Message |
| <input checked="" type="checkbox"/> Safety Msg | <input type="checkbox"/> Fire Behavior | <input checked="" type="checkbox"/> Covid-19 Message | <input checked="" type="checkbox"/> ICS 214 |

7. Prepared By: Andrew Branson

Position/Title: PSC


Signature:

8. Approved by Incident Commander:

Erik Newell

Signature:

ORGANIZATION ASSIGNMENT LIST (ICS 203)

1. Incident Name: RIVER COMPLEX		2. Operational Period: Date From: 10/14/2021 Time From: 0700		Date To: 10/15/2021 Time To: 0700	
3. Incident Commander(s) and Command Staff:			7. Operation Section:		
IC/UC's	Erik Newell	Day Operations	Kelly Harper		
Trainee	JB Clay	Planning Operations	Mark Ingram		
Safety Officer		Night Operations			
Information Officer	Karen Robinson/ Kyle Mikoiajczyk				
Liaison Officer					
		Division/Group	Q	Gabe Medina LWD: 10/21	
		Division/Group	R	Kelsey Lofdahl LWD: 10/25	
4. Agency/Organization Representatives:		Division/Group	U/K/L/S/T	Unstaffed	
Klamath NF	Rachel Smith/ Clint Isbell	Division/Group	SUPPRESSION GROUP	Travis Moyer LWD:10/22	
Shasta-Trinity NF	Rachel Birkey/ Steve Kozel	Division/Group			
CalFire SKU	Phil Anzo/ Luke Kendall			REPAIR GROUPS	
Siskiyou County SO/OES	Bryan Schenone	Division/Group	CALLAHAN REPAIR GROUP	Cody Stacher LWD: 10/25 / Craig Newell(T) LWD:	
Trinity County SO	UnderSheriff Brian Ward	Division/Group	COFFEE REPAIR GROUP (O)	Stan Hill LWD: 10/14	
		Division/Group	CRONAN REPAIR GROUP	Dave Barnett LWD: 10/16	
		Division/Group	ROAD HAZARD REPAIR GROUP	Zeke Jones LWD: 10/21	
CHP	Brandon Lale	Division/Group	PACKERS GROUP	Sara Martinez LWD: 10/18 / Robert Bergschneider(T) LWD: 10/18	
Cal Trans Siskiyou	Roger Matthews	Division/Group			
Cal Trans Trinity	Ron Isabel	Division/Group			
Private Forestry	Darin Quigley	Division/Group			
Lead READ	Frank Carus	Division/Group			
Lead ARCH	Justin Rhode	Division/Group			
CAL OES	Jason Vela/ Robert Goyeneche	Division/Group			
Covid Advisor	Scott Peedle	Division/Group			
CCC	Alex Luquin	Division/Group			
		Division/Group			
		Division/Group			
5. Planning Section:		Division/Group			
Chief	Andrew Branson	Division/Group			
Demobilization Unit	Terri Matthews	Division/Group			
Resource Unit	Frank Henderson	Division/Group			
Situation Unit		Division/Group			
Documentation Unit		Division/Group			
Status Check-In		Division/Group			
Human Resource Spec.		Division/Group			
ITSS		Division/Group			
Fire Behavior Analyst		Division/Group			
Incident Meteorologist	Andy Gorelow	Division/Group			
GISS	Nate Duncan		Air Operations Branch		
Training Specialist	Chad Englert		Air Support Group Supervisor		
			Air Tactical Group Supervisor		
6. Logistics Section			Air Operations	Kris Maldonado	
Chief	Scott Schuster				
Deputy					
LOGS Trainee	Kira Santulli/ Natalie Otto				
Base Camp Manager	Rigo Bentitez				
Base Camp Manager(t)	John Davis				
FACL/SECM	Paul Kimpling (T)		8. Finance/Administration Section:		
Ground Support Unit	Jake Kujawa	Chief	Connie Lang		
Communications Unit	Paul Noa	Time Unit	Trina Leininger		
Incident Comm Manager	Jeff Davis/ Patrick Johannessen	Equipment Time	Thomas Lauchen		
Medical Unit	Leif Juliussen	Personnel Time	Tamra Martinez		
Ordering Manager	Kira Santulli				
Prepared By: Name:	Frank Henderson	Position/Title:	PSC3 (T)	Signature:	
ICS 203		Date/Time:	10/13/2021 1900 hours		



River Complex Weather Forecast



FORECAST NO:	73	NAME OF FIRE:	River Complex
PREDICTION FOR:	Day Shift	UNIT:	Klamath National Forest
SHIFT DATE:	Thursday, Oct 14, 2021	Incident Meteorologist:	Andy Gorelow, IMET
FORECAST ISSUED:	1900 October 13, 2021		

WEATHER DISCUSSION: High pressure will build into northern California Thursday through Saturday leading to drier conditions along with a warming trend. Some areas will see patchy fog which will burn off by late morning. Temperatures will jump about 6-8 degrees today and then another 10 degrees on Friday before leveling off on Saturday. With the warmer temperatures, we will also see drier conditions with afternoon RH dropping into the 20-30% range with overnight recoveries generally between 40-50%. Winds will generally remain light and terrain driven in the valleys with northwest to north around 5-10 mph at the ridges.

TODAY (THURSDAY):

WEATHER: Patch morning fog through 10 am. Mostly sunny and warmer.

MAX TEMPERATURES: **Midslopes/Ridges:** 55-60 **Valleys:** 60-65
MIN HUMIDITY: **Midslopes/Ridges** 30-40% **Valleys:** 25-35%

20 FOOT WINDS: **Ridges:** North 5-10 mph.
Valleys: North 5-9 mph.

Chance of Wetting Rain: 0%

TONIGHT:

WEATHER: Mostly clear and not as cold.

MIN TEMPERATURES: **Midslopes/Ridges:** 25-35 **Valleys:** 35-40
MAX HUMIDITY: **Midslopes/Ridges** 45-55% **Valleys:** 60-70%

20 FOOT WINDS: **Ridges:** Northeast 5 mph
Valleys: Light drainage.

Friday through Sunday: High pressure will remain over the region Friday and Saturday bringing much warmer temperatures along with drier conditions. Temperatures will likely range from the upper 60s to mid 70s in the valleys with 60s in the mid elevations. We will also see RHs drop each afternoon ranging from 20-30% over most areas. RH recoveries overnight will also drop with readings expected to be in the 40-50% range. An area of low pressure off the coast is expected to begin breaking down the ridge Sunday leading to cooler temperatures and gusty southwest winds. There will also be a chance of showers Sunday afternoon and evening.

ASSIGNMENT LIST (ICS 204 WF)

CONTROLLED UNCLASSIFIED INFORMATION//BASIC

1. Incident Name: RIVER COMPLEX	2. Operational Period: Date From: 10/14/21 Date To: 10/15/21 Time From: 0700 Time To: 0700	3. Division Q Page 1 of 1 Quebec
--	---	--

4. Operations Personnel:			
Operations Section Chief: Kelly Harper	Night Ops:		
Branch Director:	Branch Safety:		
Division/Group Supervisor: Gabe Medina LWD: 10/21	Air Attack:		

5. Resources Assigned:		** Asterisks Denote 24 Hour Resources **					
Resource Identifier	Request #	LWD	Leader	Personnel	Hours	Reporting Location	
HC1 MAD RIVER	C-293	10/24	ERICK ESQUIVEL	18	0700-1900	ETNA ICP	
HC2IA ELK MOUNTAIN	C-288	10/22	REY REYES	20	0700-1900	ETNA ICP	

6. Work Assignments:
 Continue to mop up spot fires.
 Utilize air support to slow fire progression.
 Continue mop up in bottom of drainage.

7. Special Instructions:

8. Communications							
Name	Ch	Function	Rx Freq	Rx Tone	Tx Freq	Tx Tone	Notes
NIFC C31	B.3	COMMAND	173.0250N	T-9 100.0	163.8250N	T-9 100.0	CRAGGY PEAK
NIFC C86	B.4	COMMAND	166.1250N	T-9 100.0	162.1750N	T-9 100.0	PACKERS PEAK
NIFC C97	B.5	COMMAND	168.1375N	T-9 100.0	165.1500N	T-9 100.0	ROZ POINT
NIFC C112	B.6	COMMAND	173.6000N	T-9 100.0	162.0750N	T-9 100.0	BONANZA KING
R5 T5	B.11	TACTICAL	167.1125N	T-9 100.0	167.1125N	T-9 100.0	
A/G CMD	13	AIR TO GROUND	169.1500N		169.1500N		DIVS AND ABOVE
A/G TAC	14	AIR TO GROUND	162.8125N		162.8125N		AIR TO GROUND TACTICAL
CALCORD	15	MEDICAL	156.0750N	T-6 156.7	156.0750N	T-6 156.7	MEDEVAC COORDINATION
AIRGUARD	16	AIRGUARD	168.6250N		168.6250N	T-1 110.9	tone on transmit only - URGENT AIRCRAFT CONTACT

9. Prepared by: Name: Frank Henderson		PSC	Signature:	
ICS 204	Date/Time: 10/13/2021	2200	Personnel Count: 20	

ASSIGNMENT LIST (ICS 204 WF)

CONTROLLED UNCLASSIFIED INFORMATION//BASIC

1. Incident Name: <p style="text-align: center; font-weight: bold;">RIVER COMPLEX</p>	2. Operational Period: Date From: 10/14/21 Date To: 10/15/21 Time From: 0700 Time To: 0700	3. Branch Division <p style="text-align: center; font-weight: bold;">R</p>
---	---	---

4. Operations Personnel:		Page 1 of 1	Romeo
Operations Section Chief: Kelly Harper	Night Ops:		
Branch Director:	Branch Safety:		
Division/Group Supervisor: Kelsey Lofdahl LWD: 10/25	Air Attack:		

5. Resources Assigned:		** Asterisks Denote 24 Hour Resources **						
Resource Identifier	Request #	LWD	Leader	Personnel		Hours	Reporting Location	
HC1 SALMON RIVER	C-296	10/25	KELSEY LOFDAHL	19		0700-1900	ETNA ICP	
WFM2 MIWOK	O-1731	10/26	ELISEO GARCIA	7		0700-1900	ETNA ICP	

6. Work Assignments:
 Rehab line from Q R division break to fires edge.
 Restore handline completed during fire suppression back to natural state.

7. Special Instructions:
 Identify additional mitigations required.
 Radio Briefing with Operations at 0730.

8. Communications							
Name	Ch	Function	Rx Freq	Rx Tone	Tx Freq	Tx Tone	Notes
NIFC C31	B.3	COMMAND	173.0250N	T-9 100.0	163.8250N	T-9 100.0	CRAGGY PEAK
NIFC C86	B.4	COMMAND	166.1250N	T-9 100.0	162.1750N	T-9 100.0	PACKERS PEAK
NIFC C97	B.5	COMMAND	168.1375N	T-9 100.0	165.1500N	T-9 100.0	ROZ POINT
NIFC C112	B.6	COMMAND	173.6000N	T-9 100.0	162.0750N	T-9 100.0	BONANZA KING
R5 T6	B.12	TACTICAL	168.2375N	T-9 100.0	168.2375N	T-9 100.0	
A/G CMD	13	AIR TO GROUND	169.1500N		169.1500N		DIVS AND ABOVE
A/G TAC	14	AIR TO GROUND	162.8125N		162.8125N		AIR TO GROUND TACTICAL
CALCORD	15	MEDICAL	156.0750N	T-6 156.7	156.0750N	T-6 156.7	MEDEVAC COORDINATION
AIRGUARD	16	AIRGUARD	168.6250N		168.6250N	T-1 110.9	STONE ON TRANSMIT ONLY - URGENT AIRCRAFT CONTACT

9. Prepared by: Name: Frank Henderson PSC

ICS 204	Date/Time: 10/13/2021 2200	Personnel Count: 26
----------------	---------------------------------	--------------------------

ASSIGNMENT LIST (ICS 204 WF)

CONTROLLED UNCLASSIFIED INFORMATION//BASIC

1. Incident Name: <p style="text-align: center; font-weight: bold;">RIVER COMPLEX</p>		2. Operational Period: Date From: 10/14/21 Date To: 10/15/21 Time From: 0700 Time To: 0700			3. Division <p style="text-align: center; font-weight: bold;">SUPPRESSION GROUP</p>			
4. Operations Personnel:		Page 1 of 1						
Operations Section Chief: Kelly Harper		Night Ops:						
Branch Director:		Branch Safety:						
Division/Group Supervisor: Travis Moyer LWD:10/22		Air Attack:						
5. Resources Assigned:		** Asterisks Denote 24 Hour Resources **						
Resource Identifier	Request #	LWD	Leader	Personnel		Hours	Reporting Location	
ENG3 SHF E-313	E-809	10/25	KENNETH VAUGHN	5		0700-1900	ETNA ICP	
ENG3 SHF E-372	E-811	10/26	LONNY HAGEDON	5		0700-1900	ETNA ICP	
ENG3 NV-NNS B5231	E-772	10/19	ALAN PARKIN	4		0700-1900	ETNA ICP	
ENG3 PVT-J3 CONSTRUCTION	E-821	10/20	CLAYTON CONSTANT	3		0700-1900	ETNA ICP	
6. Work Assignments: Continue to secure and improve direct lines mop up to 300 feet depth where accessible in Minnehaha drainage from DIV Q to DIV N. In areas of indirect line, continue to monitor for roll out. Back haul all equipment not being used for direct fire suppression. Work with Callahan Group to coordinate suppression repair activities.								
7. Special Instructions: Identify additional mitigations required. Suppression Group will be used for IA response.								
8. Communications								
Name	Ch	Function	Rx Freq	Rx Tone	Tx Freq	Tx Tone	Notes	
NIFC C31	B.3	COMMAND	173.0250N	T-9 100.0	163.8250N	T-9 100.0	CRAGGY PEAK	
NIFC C86	B.4	COMMAND	166.1250N	T-9 100.0	162.1750N	T-9 100.0	PACKERS PEAK	
NIFC C97	B.5	COMMAND	168.1375N	T-9 100.0	165.1500N	T-9 100.0	ROZ POINT	
NIFC C112	B.6	COMMAND	173.6000N	T-9 100.0	162.0750N	T-9 100.0	BONANZA KING	
NIFC T3	B.8	TACTICAL	168.6000N	T-9 100.0	168.6000N	T-9 100.0	SUPPRESSION	
A/G CMD	13	AIR TO GROUND	169.1500N		169.1500N		DIVS AND ABOVE	
A/G TAC	14	AIR TO GROUND	162.8125N		162.8125N		AIR TO GROUND TACTICAL	
CALCORD	15	MEDICAL	156.0750N	T-6 156.7	156.0750N	T-6 156.7	MEDEVAC COORDINATION	
AIRGUARD	16	AIRGUARD	168.6250N		168.6250N	T-1 110.9	TONE ON TRANSMIT ONLY - URGENT AIRCRAFT CONTACT	
9. Prepared by: Name:		Frank Henderson		PSC				
ICS 204		Date/Time: 10/13/2021		2100		Personnel Count: 17		

ASSIGNMENT LIST (ICS 204 WF)

CONTROLLED UNCLASSIFIED INFORMATION//BASIC

1. Incident Name:		2. Operational Period:		3. Division	
RIVER COMPLEX		Date From: 10/14/21	Date To: 10/15/21	CALLAHAN REPAIR GROUP	
		Time From: 0700	Time To: 0700	Page 1 of 1	

4. Operations Personnel:					
Operations Section Chief: Kelly Harper		Night Ops:			
Branch Director:		Branch Safety:			
Division/Group Supervisor: Cody Stacher LWD: 10/25 / Craig Newell(T) LWD: 10/18		Air Attack:			

5. Resources Assigned:		** Asterisks Denote 24 Hour Resources **					
Resource Identifier	Request #	LWD	Leader	Personnel	Hours	Reporting Location	
HC2IA PVT-GRAYBACK FORESTRY 7B	C-292	10/16	TIM BREWER	20	0700-1900	ETNA ICP	
DOZ2 PVT-EMERY FARM	E-401	10/20	LOGAN GARNER	2	0700-1900	ETNA ICP	
EXCA PVT-RICHARD MCLERAN TRUCKING	E-783	10/15	RICHARD MCLERAN	2	0700-1900	ETNA ICP	
EXCA PVT-HIGH POWER	E-780	10/18	JESSE ZERKLE	2	0700-1900	ETNA ICP	
EXCA PVT-WALBERG INC	E-784	10/17	GARY LAWLESS	2	0700-1900	ETNA ICP	
HEQB GOODPASTER	O-1724	10/24	NOEL GOODPASTER	1	0700-1900	ETNA ICP	
HEQB MOTA (T)	O-1621	10/14	RAMON MOTA	1	0700-1900	ETNA ICP	
EMPF- REIBOLD	O-1691	10/20	ROBIN REIBOLD	1	0700-1900	ETNA ICP	
REAF REIMAN	O-1611	11/15	JOE REIMAN	1	0700-1900	ETNA ICP	
REAF JAMIESON	O-798	10/23	TRISTAN JAMIESON	1	0700-1900	ETNA ICP	
REAF (T) DISANTO	O-1673	10/18	DAVID DISANTO	1	0700-1900	ETNA ICP	

6. Work Assignments:
 Implement suppression repair according to the repair plan guidelines. Coordinate activities with the assigned TFLD/HEQB. Suppression repair will be completed to resource advisors specifications.

7. Special Instructions:
 All work must be approved by Resource Advisors.
 REAFs and READS will check in and out with DIVS. All natural and cultural resource concerns are flagged with orange/white candy-stripe flagging.
 Reno REMS Unit located at DP 37. Mountain Medics Ambulance #1 located at DP 32.

8. Communications							
Name	Ch	Function	Rx Freq	Rx Tone	Tx Freq	Tx Tone	Notes
NIFC C31	B.3	COMMAND	173.0250N	T-9 100.0	163.8250N	T-9 100.0	CRAGGY PEAK
NIFC C112	B.6	COMMAND	173.6000N	T-9 100.0	162.0750N	T-9 100.0	BONANZA KING
NIFC T6	11	TACTICAL	166.7750N	T-9 100.0	166.7750N	T-9 100.0	CALLAHAN
A/G CMD	13	AIR TO GROUND	169.1500N		169.1500N		DIVS AND ABOVE
A/G TAC	14	AIR TO GROUND	162.8125N		162.8125N		AIR TO GROUND TACTICAL
CALCORD	15	MEDICAL	156.0750N	T-6 156.7	156.0750N	T-6 156.7	MEDEVAC COORDINATION
AIRGUARD	16	AIRGUARD	168.6250N		168.6250N	T-1 110.9	tone on transmit only - URGENT AIRCRAFT CONTACT

9. Prepared by: Name: Frank Henderson PSC

ICS 204 Date/Time: 10/13/2021 2200 Personnel Count: 14

ASSIGNMENT LIST (ICS 204 WF)

CONTROLLED UNCLASSIFIED INFORMATION//BASIC

1. Incident Name: <p style="text-align: center;">RIVER COMPLEX</p>	2. Operational Period: Date From: 10/14/21 Date To: 10/15/21 Time From: 0700 Time To: 0700	3. Division <p style="text-align: center;">COFFEE REPAIR GROUP (O)</p>
---	---	---

4. Operations Personnel:		Page 1 of 1
Operations Section Chief: Kelly Harper	Night Ops:	
Branch Director:	Branch Safety:	
Division/Group Supervisor: Stan Hill LWD: 10/14	Air Attack:	

5. Resources Assigned:		** Asterisks Denote 24 Hour Resources **					
Resource Identifier	Request #	LWD	Leader	Personnel	Hours	Reporting Location	
HC2IA PVT-FIRESTORM NCC19	C-51	10/16	GRAHAM LOWE	20	0700-1900	ETNA ICP	
HC2IA PVT-TORRES CONTRACTING	C-278	10/17	JOSE VERA	20	0700-1900	ETNA ICP	
DOZ2 PVT-BEN'S TRUCK & EQUIPMENT INC	E-790	10/17	BILL SCARBROUGH	2	0700-1900	ETNA ICP	
DOZ2 PVT-ROBERT JOHNSON	E-789	10/17	LANE WILSON	2	0700-1900	ETNA ICP	
EXCA PVT-DOWNEY TRUCKING	E-777	10/28	MASON DIXON	2	0700-1900	ETNA ICP	
EXCA PVT-WD HEAVY EQUIPMENT	E-751	10/23	ALLEN GWILT	2	0700-1900	ETNA ICP	
EXCA PVT-NORTH RIVERS CONSTRUCTION	E-782	10/28	TRAVIS PARRY	2	0700-1900	ETNA ICP	
EXCA PVT-ZEBS TREE SERVICE	E-785	10/17	RON WAKE	2	0700-1900	ETNA ICP	
EXCA PVT-SLO MO	E-778	10/16	RON FRANK	2	0700-1900	ETNA ICP	
GRD1 PVT-OILAR	E-679	10/22	DANIEL RAMIREZ	2	0700-1900	ETNA ICP	
GRD2 PVT-M PETERS	E-506	10/16	ALEXANDER GREY	2	0700-1900	ETNA ICP	
GRD2 PVT-JOHNSON	E-543	10/17	JACK HOTTENDORF	2	0700-1900	ETNA ICP	
WTS2 PVT-HURLIMANN	E-273	10/17	FRANK HURLIMANN	1	0700-1900	ETNA ICP	
WTS2 DOWLING 001	E-765	10/19	PAT GREY	1	0700-1900	ETNA ICP	
WTS2 DOWLING 002	E-766	10/24	OLIVER DOWLING	1	0700-1900	ETNA ICP	
WTS2 PVT-GRANITE COMMERCIAL	E-235	10/26	WRENN KELLER	1	0700-1900	ETNA ICP	
CHIP PVT-DAVIS CORP	E-822	10/24	JOSIAH KELLY	3	0700-1900	ETNA ICP	
CHIP PVT-YREKA OUTLAND	E-806	10/24	KENNETH JONES	3	0700-1900	ETNA ICP	
HEQB JUBACK	O-1651	10/17	PATRICK JUBACK	1	0700-1900	ETNA ICP	
HEQB (T) TINDLE	O-1689	10/17	ERIC TINDLE	1	0700-1900	ETNA ICP	
REAF O'NEIL	O-1542	10/18	ERIC O'NEIL	1	0700-1900	ETNA ICP	
WFM1 SNOWSLIDE	O-1739	10/26	NATHAN ROBINSON	10	0700-1900	ETNA ICP	

6. Work Assignments:
 Implement suppression repair according to the repair plan guidelines in Coffee Creek and Swift Creek. Coordinate all activities with the assigned TFLD/HEQB and resource advisors. Make contact with community members and address concerns as appropriate. Suppression repair will be completed to resource advisors specifications.
Driving Instructions: All incoming resources tie in at DP 70.

7. Special Instructions:
 All work must be approved by Resource Advisors.
 REAFS and READS will check in and out with DIVS. All natural and cultural resource concerns are flagged with orange/white candy-stripe flagging.
 Mountain Medic Ambulance #1 located at DP 32.

8. Communications							
Name	Ch	Function	Rx Freq	Rx Tone	Tx Freq	Tx Tone	Notes
NIFC C31	B.3	COMMAND	173.0250N	T-9 100.0	163.8250N	T-9 100.0	CRAGGY PEAK
NIFC C112	B.6	COMMAND	173.6000N	T-9 100.0	162.0750N	T-9 100.0	BONANZA KING
NIFC T1	B.7	TACTICAL	168.0500N	T-9 100.0	168.0500N	T-9 100.0	COFFEE, PACKERS GRP
A/G CMD	13	AIR TO GROUND	169.1500N		169.1500N		DIVS AND ABOVE
A/G TAC	14	AIR TO GROUND	162.8125N		162.8125N		AIR TO GROUND TACTICAL
CALCORD	15	MEDICAL	156.0750N	T-6 156.7	156.0750N	T-6 156.7	MEDEVAC COORDINATION
AIRGUARD	16	AIRGUARD	168.6250N		168.6250N	T-1 110.9	TONE ON TRANSMIT ONLY - URGENT AIRCRAFT CONTACT

9. Prepared by: Name:	Frank Henderson	PSC
ICS 204	Date/Time: 10/13/2021 2200	Personnel Count: 83

ASSIGNMENT LIST (ICS 204 WF)

CONTROLLED UNCLASSIFIED INFORMATION//BASIC

1. Incident Name:	2. Operational Period:	3. Division
RIVER COMPLEX	Date From: 10/14/21 Date To: 10/15/21 Time From: 0700 Time To: 0700	CRONAN REPAIR GROUP

4. Operations Personnel:		Page 1 of 1
Operations Section Chief: Kelly Harper	Night Ops:	
Branch Director:	Branch Safety:	
Division/Group Supervisor: Dave Barnett LWD: 10/16	Air Attack:	

5. Resources Assigned:		** Asterisks Denote 24 Hour Resources **					Hours	Reporting Location
Resource Identifier	Request #	LWD	Leader	Personnel				
HC21A PVT-GRAYBACK 8B	C-277	10/17	CHRIS UNIACK	20		0700-1900	ETNA ICP	
HC2 PACIFIC OASIS CREW 2	C-289	10/22	JAMAL KWIATKOWSKI	20		0700-1900	ETNA ICP	
ENG3 KNF E-357	E-808	10/25	PAUL BUTCHER	5		0700-1900	ETNA ICP	
DOZ2-PVT-MOBLEY	E-182	10/28	CODY DONAHUE	2		0700-1900	ETNA ICP	
DOZ2 PVT-CRAIG MOUNTAIN	E-315	10/17	KYLE ALBRIGHT	2		0700-1900	ETNA ICP	
DOZ2 PVT-BLACK OPERATIONS	E-333	10/20	WILL BLACK	2		0700-1900	ETNA ICP	
DOZ3 PVT-MILE HIGH	E-92	10/16	TORIN THOMPSON	2		0700-1900	ETNA ICP	
EXCA PVT-MOBLEY CONSTRUCTION	E-776	10/16	DONNY MOBLEY	2		0700-1900	ETNA ICP	
EXCA PVT-BOB JOHNSON CONSTRUCTION	E-752	10/19	DAVE LAMARR	2		0700-1900	ETNA ICP	
EXCA PVT-BRAD INGRAM CONSTRUCTION	E-754	10/15	DRU GANBIN	2		0700-1900	ETNA ICP	
WTS1 PVT-CATTLELACK RANCH 131	E-825	10/25	JOHN SEMPLE	1		0700-1900	ETNA ICP	
WTS2 PVT-ALPINE	E-262	10/30	CONRAD BURBANK	1		0700-1900	ETNA ICP	
TFLD (T) BUCHTER	E-808	10/25	PAUL BUTCHER	1		0700-1900	ETNA ICP	
HEQB ROGERS	O-1652	10/16	DAVE ROGERS	1		0700-1900	ETNA ICP	
REAF KITTLE	O-1694	10/18	MICAH KITTLE	1		0700-1900	ETNA ICP	
EMPF CLOCK	O-1681	10/20	TYRELL CLOCK	1		0700-1900	ETNA ICP	

6. Work Assignments:
 Implement suppression repair according to repair plan guidelines.
 Coordinated activities with assigned TFLD/HEQB.
 Suppression repair will be completed to resource advisors specifications.

7. Special Instructions:
 All equipment will go through Etna.
 Pilot vehicle required for one lane sections and sharp turns. Steep and narrow roads with cattle throughout directly on road.
 Use caution and very slow speeds in Sawyers Bar with very narrow section between two buildings.
Driving instructions from Etna: Sawyers Bar Rd west to DP 10. (31 miles from ICP)
 .
 Mountain Medics Ambulance #2 located at DP10.

8. Communications							
Name	Ch	Function	Rx Freq	Rx Tone	Tx Freq	Tx Tone	Notes
NIFC C1	3	COMMAND	170.9750N	T-9 100.0	168.7000N	T-9 100.0	EDDY GULCH LOOKOUT
NIFC C85	6	COMMAND	173.1375N	T-9 100.0	162.5875N	T-9 100.0	BLUE RIDGE LOOKOUT
NIFC T7	12	TACTICAL	168.2500N	T-9 100.0	168.2500N	T-9 100.0	CRONAN
A/G CMD	13	AIR TO GROUND	169.1500N		169.1500N		DIVS AND ABOVE
A/G TAC	14	AIR TO GROUND	162.8125N		162.8125N		AIR TO GROUND TACTICAL
CALCORD	15	MEDICAL	156.0750N	T-6 156.7	156.0750N	T-6 156.7	MEDEVAC COORDINATION
AIRGUARD	16	AIRGUARD	168.6250N		168.6250N	T-1 110.9	

9. Prepared by: Name:	Frank Henderson	PSC
ICS 204	Date/Time: 10/13/2021	2200
	Personnel Count:	20

ASSIGNMENT LIST (ICS 204 WF)

CONTROLLED UNCLASSIFIED INFORMATION/BASIC

1. Incident Name: <p style="text-align: center;">RIVER COMPLEX</p>	2. Operational Period: Date From: 10/14/21 Date To: 10/15/21 Time From: 0700 Time To: 0700	3. Division <p style="text-align: center;">ROAD HAZARD REPAIR GROUP</p>
---	---	--

Page 1 of 1

4. Operations Personnel:			
Operations Section Chief: Kelly Harper	Night Ops:		
Branch Director:	Branch Safety:		
Division/Group Supervisor: Zeke Jones LWD: 10/21	Air Attack:		

5. Resources Assigned: ** Asterisks Denote 24 Hour Resources **							
Resource Identifier	Request #	LWD	Leader	Personnel		Hours	Reporting Location
PROCESSOR JOHNSONS	E-799	10/21	ERIC COUSINEAU	1		0700-1900	ETNA ICP
PROCESSOR CATE LAND	E-800	10/25	KELBY CATES	2		0700-1900	ETNA ICP
FEL1 PVT-STATEWIDE CONTRACT SERVICE	E-798	10/23	CEDRIC HAYDEN	1		0700-1900	ETNA ICP
LDFR WYEAST FORESTRY	E-802	10/22	BRAD NICKLAUS	1		0700-1900	ETNA ICP
FMOD PVT-MOEN TIMBER	O-116	10/18	DARWIN SAXON	2		0700-1900	ETNA ICP
FFT1 BENNETT	O-1706	10/24	MIKE BENNETT	1		0700-1900	ETNA ICP
FFT1 COLBURN	O-1708	10/21	JAMES COLBURN	1		0700-1900	ETNA ICP
FFT2 GREENHALGH	O-1707	10/21	BRENT GREENHALGH	1		0700-1900	ETNA ICP
REAF MAXWELL	O-1683	10/16	JAMES MAXWELL	1		0700-1900	ETNA ICP

6. Work Assignments:
 Falling, bucking, and decking roadside hazard trees on high use roads that are part of maintenance levels 2-5 east of blue jay ridge in division M. Roads will be cleared of all hazards. All activities will be coordinated with resources advisors.

7. Special Instructions:
 All work must be approved by Resource Advisors.
 REAFS and READS will check in and out with DIVS. All natural and cultural resource concerns are flagged with orange/white candy-stripe flagging.
 Potential delays on 39N10, 39N63, and 40N17 rds.
 40N17 Rd will be blocked for large portions of the day.

8. Communications

Name	Ch	Function	Rx Freq	Rx Tone	Tx Freq	Tx Tone	Notes
NIFC C1	B.1	COMMAND	170.9750N	T-9 100.0	168.7000N	T-9 100.0	EDDY GULCH LOOKOUT
NIFC C11	B.2	COMMAND	170.6875N	T-9 100.0	166.5750N	T-9 100.0	ABOVE CECILVILLE
NIFC C86	B.4	COMMAND	166.1250N	T-9 100.0	162.1750N	T-9 100.0	PACKERS PEAK
NIFC T5	A.10	TACTICAL	166.7250N	T-9 100.0	166.7250N	T-9 100.0	ROADSIDE HAZARD
A/G CMD	13	AIR TO GROUND	169.1500N		169.1500N		DIVS AND ABOVE
A/G TAC	14	AIR TO GROUND	162.8125N		162.8125N		AIR TO GROUND TACTICAL
CALCORD	15	MEDICAL	156.0750N	T-6 156.7	156.0750N	T-6 156.7	MEDEVAC COORDINATION
AIRGUARD	16	AIRGUARD	168.6250N		168.6250N	T-1 110.9	ONE ON TRANSMIT ONLY - URGENT AIRCRAFT CONTACT

9. Prepared by: Name: Frank Henderson PSC

ICS 204 Date/Time: 10/13/2021 2200 Personnel Count: 11

ASSIGNMENT LIST (ICS 204 WF)

CONTROLLED UNCLASSIFIED INFORMATION//BASIC

1. Incident Name: <p style="text-align:center">RIVER COMPLEX</p>		2. Operational Period: Date From: 10/14/21 Date To: 10/15/21 Time From: 0700 Time To: 0700		3. Division <p style="text-align:center">PACKERS GROUP</p> <p style="text-align:right">Page 1 of 1</p>			
4. Operations Personnel: Operations Section Chief: Kelly Harper Branch Director: Division/Group Supervisor: Sara Martinez LWD: 10/18 / Robert Bergschneider(T) LWD: 10/18				Night Ops: Branch Safety: Air Attack:			
5. Resources Assigned:		** Asterisks Denote 24 Hour Resources **					
Resource Identifier	Request #	LWD	Leader	Personnel	Hours	Reporting Location	
WFM2 USFS-MAMMOTH	O-1690	10/18	SARA MARTINEZ	10	0700-1900	CARTER SUMMIT	
PACK STRING 1	E-758	10/25	KATY BARTZOKIS	2	0700-1900	CARTER SUMMIT	
EMPF BORUM	O-1678	10/16	CONNOR BORUM	1	0700-1900	CARTER SUMMIT	
6. Work Assignments: Remove structure wrap from infrastructure in remote areas located in the southwest portion of the fire. Mitigate any potential environmental concerns. Coordinate with Resource Advisors and the local unit to prioritize missions.							
7. Special Instructions: Utilize SHF Pack Train to ingress/egress remote work assignments. Coordinate missions with the Operations section to ensure accountability.							
8. Communications							
Name	Ch	Function	Rx Freq	Rx Tone	Tx Freq	Tx Tone	Notes
NIFC C31	B.3	COMMAND	173.0250N	T-9 100.0	163.8250N	T-9 100.0	CRAGGY PEAK
NIFC C86	B.4	COMMAND	166.1250N	T-9 100.0	162.1750N	T-9 100.0	PACKERS PEAK
NIFC C97	B.5	COMMAND	168.1375N	T-9 100.0	165.1500N	T-9 100.0	ROZ POINT
NIFC C112	B.6	COMMAND	173.6000N	T-9 100.0	162.0750N	T-9 100.0	BONANZA KING
NIFC T1	B.7	TACTICAL	168.0500N	T-9 100.0	168.0500N	T-9 100.0	COFFEE, PACKERS GRP
A/G CMD	13	AIR TO GROUND	169.1500N		169.1500N		DIVS AND ABOVE
A/G TAC	14	AIR TO GROUND	162.8125N		162.8125N		AIR TO GROUND TACTICAL
CALCORD	15	MEDICAL	156.0750N	T-6 156.7	156.0750N	T-6 156.7	MEDEVAC COORDINATION
AIRGUARD	16	AIRGUARD	168.6250N		168.6250N	T-1 110.9	tone on transmit only - URGENT AIRCRAFT CONTACT
9. Prepared by: Name:			Frank Henderson		PSC		
ICS 204	Date/Time: 10/13/2021		2100		Personnel Count: 13		

RADIO CLONE GROUP A v5

ICS 205 - INCIDENT RADIO COMMUNICATIONS PLAN

1. Incident Name: **RIVER COMPLEX CLONE GROUP A**

2. Date/Time Prepared: 10/13/2021 1930

3. Operational Period: Date From: 10/14/21 Date To: 10/15/21
Time From: 0700 Time To: 0700

4. Communications

Ch#	Function	Name	Assigned To	Rx Freq	Rx Tone	Tx Freq	Tx Tone	Notes
1	COMMAND	SALMON	IA USE	172.4000N		164.1250N	T-6 156.7	KNF
2	COMMAND	RIVER	IA USE	172.2500N		165.0750N	T-7 167.9	KNF
3	COMMAND	NIFC C1	ALL RESOURCES	170.9750N	T-9 100.0	168.7000N	T-9 100.0	EDDY GULCH LOOKOUT
4	COMMAND	NIFC C11	ALL RESOURCES	170.6875N	T-9 100.0	166.5750N	T-9 100.0	ABOVE CECILVILLE
5	COMMAND	NIFC C31	ALL RESOURCES	173.0250N	T-9 100.0	163.8250N	T-9 100.0	CRAGGY PEAK
6	COMMAND	NIFC C85	CRONAN	173.1375N	T-9 100.0	162.5875N	T-9 100.0	BLUE RIDGE LOOKOUT
7	COMMAND	NIFC C86	ALL RESOURCES	166.1250N	T-9 100.0	162.1750N	T-9 100.0	PACKERS PEAK
8	TACTICAL	NIFC T1	COFFEE	168.0500N	T-9 100.0	168.0500N	T-9 100.0	COFFEE GROUP
9	TACTICAL	NIFC T3	SUPPRESSION	168.6000N	T-9 100.0	168.6000N	T-9 100.0	SUPPRESSION GROUP
10	TACTICAL	NIFC T5	ROADSIDE GRP	166.7250N	T-9 100.0	166.7250N	T-9 100.0	ROADSIDE HAZARD GROUP
11	TACTICAL	NIFC T6	CALLAHAN	166.7750N	T-9 100.0	166.7750N	T-9 100.0	CALLAHAN
12	TACTICAL	NIFC T7	CRONAN	168.2500N	T-9 100.0	168.2500N	T-9 100.0	CRONAN
13	AIR TO GROUND	A/G CMD	DIVS AND ABOVE	169.1500N		169.1500N		DIVS AND ABOVE
14	AIR TO GROUND	A/G TAC	ALL RESOURCES	162.8125N		162.8125N		AIR TO GROUND TACTICAL
15	MEDICAL	CALCORD	ALL RESOURCES	156.0750N	T-6 156.7	156.0750N	T-6 156.7	MEDEVAC COORDINATION
16	AIRGUARD	AIRGUARD	ALL RESOURCES	168.6250N		168.6250N	T-1 110.9	TONE ON TRANSMIT ONLY - URGENT AIRCRAFT CONTACT
17								

5. Special Instructions

Communications Unit Phone Number: 530-467-1509 24-HOUR

6. Prepared by (Communications Unit Leader): Name: Paul Noa

Signature: _____ Date/Time: 10/13/2021 1930

ICS 205 - CONTROLLED UNCLASSIFIED INFORMATION/BASIC

ICS 205 - INCIDENT RADIO COMMUNICATIONS PLAN

RADIO CLONE GROUP B v5

1. Incident Name: **RIVER COMPLEX CLONE GROUP B**

2. Date/Time Prepared: 10/13/2021 1930

3. Operational Period: Date From: 10/14/21 Date To: 10/15/21
Time From: 0700 Time To: 0700

4. Communications

Ch#	Function	Name	Assigned To	Rx Freq	Rx Tone	Tx Freq	Tx Tone	Notes
1	COMMAND	NIFC C1	ALL RESOURCES	170.9750N	T-9 100.0	168.7000N	T-9 100.0	EDDY GULCH LOOKOUT
2	COMMAND	NIFC C11	ALL RESOURCES	170.6875N	T-9 100.0	166.5750N	T-9 100.0	ABOVE CECILVILLE
3	COMMAND	NIFC C31	ALL RESOURCES	173.0250N	T-9 100.0	163.8250N	T-9 100.0	CRAGGY PEAK
4	COMMAND	NIFC C86	ALL RESOURCES	166.1250N	T-9 100.0	162.1750N	T-9 100.0	PACKERS PEAK
5	COMMAND	NIFC C97	ALL RESOURCES	168.1375N	T-9 100.0	165.1500N	T-9 100.0	ROZ POINT
6	COMMAND	NIFC C112	ALL RESOURCES	173.6000N	T-9 100.0	162.0750N	T-9 100.0	BONANZA KING
7	TACTICAL	NIFC T1	COFFEE	168.0500N	T-9 100.0	168.0500N	T-9 100.0	COFFEE, PACKERS GRP
8	TACTICAL	NIFC T3	SUPPRESSION	168.6000N	T-9 100.0	168.6000N	T-9 100.0	SUPPRESSION
9	TACTICAL	NIFC T5	ROADSIDE GRP	166.7250N	T-9 100.0	166.7250N	T-9 100.0	ROADSIDE HAZARD GROUP
10	TACTICAL	R5 T4	BEAR COUNTRY	166.5500N	T-9 100.0	166.5500N	T-9 100.0	BEAR COUNTRY
11	TACTICAL	R5 T5	DIVISION Q	167.1125N	T-9 100.0	167.1125N	T-9 100.0	
12	TACTICAL	R5 T6	DIVISION R	168.2375N	T-9 100.0	168.2375N	T-9 100.0	
13	AIR TO GROUND	A/G CMD	DIVS AND ABOVE	169.1500N		169.1500N		DIVS AND ABOVE
14	AIR TO GROUND	A/G TAC	ALL RESOURCES	162.8125N		162.8125N		
15	MEDICAL	CALCORD	ALL RESOURCES	156.0750N	T-6 156.7	156.0750N	T-6 156.7	MEDEVAC COORDINATION
16	AIRGUARD	AIRGUARD	ALL RESOURCES	168.6250N		168.6250N	T-1 110.9	TONE ON TRANSMIT ONLY - URGENT AIRCRAFT CONTACT
17								

5. Special Instructions

Communications Unit Phone Number: 530-467-1509 24-HOUR

6. Prepared by (Communications Unit Leader): Name: Paul Noa

Signature: _____ Date/Time: 10/13/2021 1930

ICS 205 - CONTROLLED UNCLASSIFIED INFORMATION/BASIC

ICS 205 - INCIDENT RADIO COMMUNICATIONS PLAN				INITIAL ATTACK CLONE GROUP (C)				
1. Incident Name: RIVER COMPLEX		2. Date/Time Prepared 10/13/2021 1930		3. Operational Period: Date From: 10/14/21 Date To: 10/15/21 Time From: 0700 Time To: 0700				
INITIAL ATTACK CLONE GROUP (C)								
4. Communications								
Ch#	Function	Name	Assigned To	Rx Freq	Rx Tone	Tx Freq	Tx Tone	Notes
1	COMMAND	SALMON	ALL RESOURCES	172.4000N		164.1250N	T-6 156.7	KNF
2	COMMAND	RIVER	ALL RESOURCES	172.2500N		165.0750N	T-7 167.9	KNF
3	IA SKU	SKU	ALL RESOURCES	151.3250		159.3600	T-1 110.9	SKU LOCAL
4	IA SHU	SHU	ALL RESOURCES	151.1600		159.2700	T-1 110.9	SHU LOCAL
5	IA SHF	SHF	ALL RESOURCES	171.5750		165.0125	T-1 110.9	BONANZA KING
6								
7								
8	IA SKU	CDF TAC 9	ALL RESOURCES	151.3850	T-16 192.8	151.3850	T-16 192.8	CDF TAC 9
9	IA SHU	CDF TAC 11	ALL RESOURCES	151.4450	T-16 192.8	151.4450	T-16 192.8	CDF TAC 11
10	IA SHF	NIFC TAC 2	ALL RESOURCES	168.2000		168.2000		NIFC TAC 2 - SHF IA TAC
11	AIR TO GROUND	CDF A/G 1	ALL RESOURCES	151.2200	T-16 192.8	151.2200	T-16 192.8	
12	AIR TO GROUND	CDF A/G 2	ALL RESOURCES	159.2625	T-16 192.8	159.2625	T-16 192.8	
13	AIR TO GROUND	A/G CMD	DIVS AND ABOVE	169.1500N		169.1500N		DIVS AND ABOVE
14	AIR TO GROUND	A/G TAC	ALL RESOURCES	162.8125N		162.8125N		
15	MEDICAL	CALCORD	ALL RESOURCES	156.0750N	T-6 156.7	156.0750N	T-6 156.7	MEDEVAC COORDINATION
16	AIRGUARD	AIRGUARD	ALL RESOURCES	168.6250N		168.6250N	T-1 110.9	TONE ON TRANSMIT ONLY - URGENT AIRCRAFT CONTACT
17								
5. Special Instructions								
Communications Unit Phone Number: 530-467-1509 24-HOUR								
6. Prepared by (Communications Unit Leader): Name: Paul Noa								Signature: _____
ICS 205 - CONTROLLED UNCLASSIFIED INFORMATION//BASIC								Date/Time: 10/13/2021 1930

Training Message

TRAINEES:

In order to receive documented credit for your training assignment – you must close out with the Training Specialist before you Demob. When as much work (as possible) has been completed in your PTB for this incident – Conduct the “close-out” process w the TNSP to save you time at DMOB

**** (THIS INCLUDES ASSIGNMENTS ENDING WITH TRANSITION) ****

Submit/Upload the following during the “exit interview”

If your trainer has left I need your new Trainer info Name/Home Unit/contact phone and email

You must submit copies from each trainer of the following:

- A completed and signed ICS 225 or 226 Performance Evaluation
 - A completed Exit Interview Form
 - A completed Task Book Evaluation

Chad Englert - TNSP

Englertc@cityofmerced.org

209-614-9031

Training Check-In



Training Exit Interview



TENTATIVE DEMOB
River Complex US-CA-KNF-006385

If you need to do any crew swaps, crew extensions, or R&Rs, please come to the Demob trailer to fill out the appropriate form. All forms need to be signed by your division supervisor AND home unit supervisor before it will be approved.

TENTATIVE DEMOB
River Complex US-CA-KNF-006385
10/14/2021

<u>OVERHEAD</u>			
O-1451.47	SWETT, JONATHAN E	0745	GISS
O-1592	CLASSAY, JERE	0800	DIVS
O-1598	LEE, JONATHAN T	0815	SOF2
O-1600	JULIUSSEN, LEIF HOVEDSKOV	0830	MEDL
O-1707	COLBURN, JAMES	0845	FFT1

10/15/2021

<u>OVERHEAD</u>			
O-1573	KUJAWA, JACOB PATRICK	0730	EQPM
O-1621	MOTA, RAMON	0745	HEQB
O-1622	HILL, STAN	0800	TFLD

10/16/2021

<u>OVERHEAD</u>			
O-1611	REINMAN, JOSEPH	0730	REAF
O-1647	KIMPLING, PAUL MYCHAL	0745	FACL
O-1667	DAVIS, JEFF	0800	INCM

<u>EQUIPMENT</u>			
E-138	JOHNSON, MATTHEWS	0730	PU
E-182	MOBLEY CONSTRUCTION	0745	DOZ2
E-762	TRANSPORTATION STAKESIDE- LANDRUM, RICHARD	0815	STK
E-783	RICHARD MCLERAN TRUCKING	0830	EXCA

Resources requiring air travel need to submit a flight request using the QR code on the front of the IAP at least 72 hours prior to demobilization date.

*** = air travel

Effective Waterbars

When locating and building water bars, place them the right **distance** apart, at a **diagonal** to the fire line, so that they **divert**, then **discharge**, then **dissipate** the energy of the flowing water. Be sure to make them deep enough so they'll be durable, and that soil does **not block** the water bar outlet.

Recommended spacing for waterbars on fire lines.

Fire line slope %	Degrees	Maximum Distance Apart (feet)
1-5flat-3°.....	200
6-204-11°.....	125
21-4011-22°.....	60
41-6023-31°.....	40
>60	25

Waterbars should be at least two pulaskis (4-6 inches) wide and 12-24 inches high for handlines. For dozer lines, waterbars may be 2-3' high and the 5-6' across. They should survive the heaviest rain storm...think 6" rain in 36 hours.

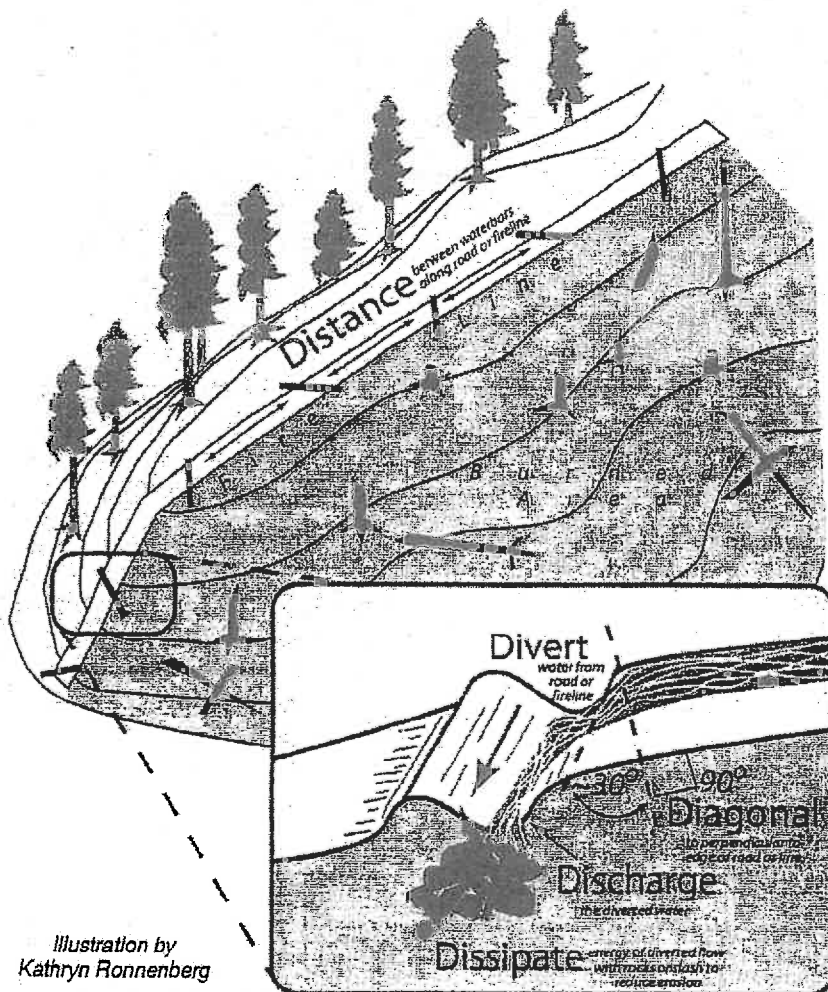
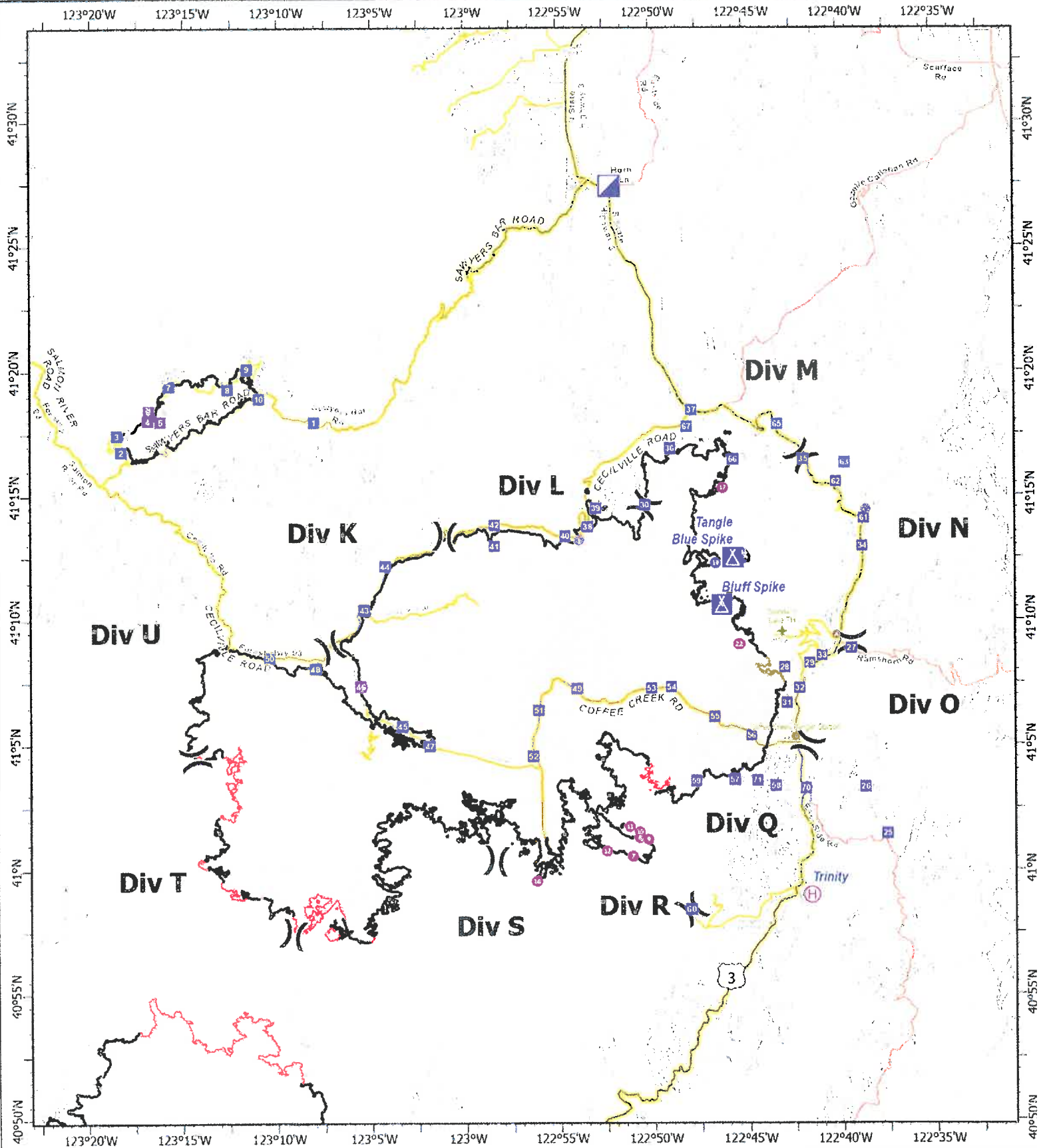


Illustration by
Kathryn Ronnenberg

Transportation

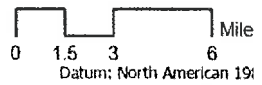


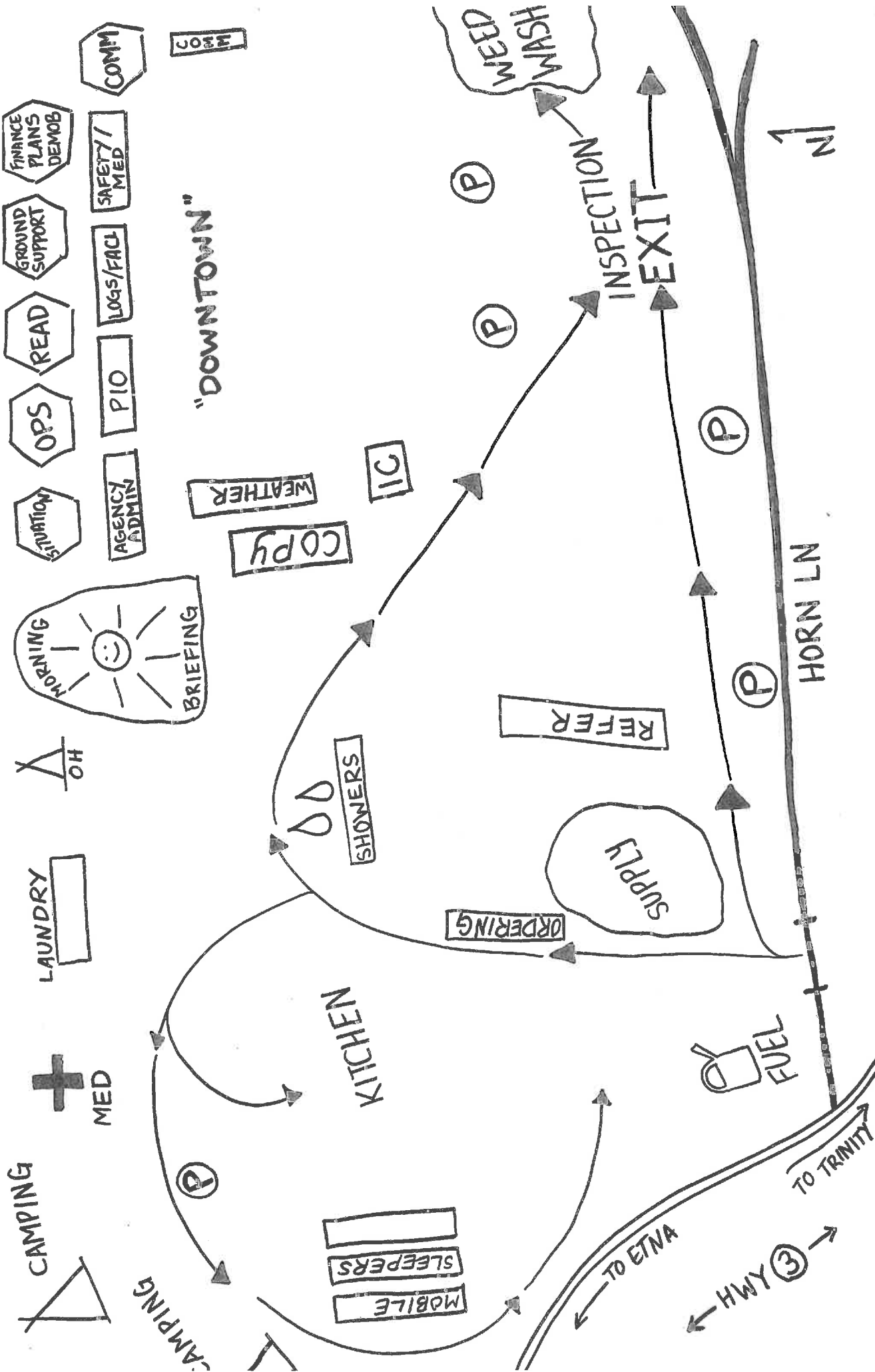
River Complex

CA-KNF-006385

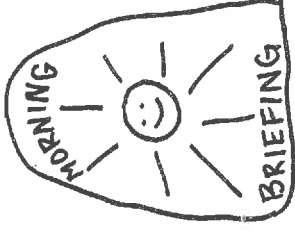
198901 acres
IR updated 10/07/2021

- Helispot
- ⊕ Helibase
- ▣ Incident Command Post
- Drop Point
- ⊠ Camp
- ⊗ Division Break
- Wildfire Daily Perimeter
- Highway
- Main Route
- Local





- SITUATION
- AGENCY ADMIN
- PIO
- LOGS/FACIL
- SAFETY / MED
- FINANCE PLANS
- GROUND SUPPORT
- READ
- OPS
- COMM
- COFF



RIVER COMPLEX
 CP MAP CA-KNF-006385 P5N7CM

CAMP HOURS: 0530-0900 BREAKFAST
 1800-2100 DINNER
 0445-2145 REFER
 0600-2100 SUPPLY
 0600-2100 GROUND SUPPORT

04 0500-1200 SHOWER
 1400-2300

RIVER COMPLEX SAFETY MESSAGE

Think Safe... Work Safe... Demob Safe

INCIDENT: River Complex

DATE: 10/14/2021 to 10/15/21

Major Hazards and Risks:

Driving

Hazard Trees

Extended Medical Extraction

Steep Terrain

Rolling Material

Rain and Cold Weather

Fatigue

Dehydration

Heavy Equipment

Animals on Roads

Air Operations

Narrative: Know who your supervisor is. Are you prepared for your travel home or to your next assignment? Your safety and well-being continue to be the highest priority. This is especially true with the cumulative effect of fatigue from long work days and multiple assignments this fire season.

Working with and around HEAVY EQUIPMENT

- Stay at least 100' in front of and 50' behind equipment or 2.5 times the timber height.
- No one but the operator should ride on the equipment.
- Never approach it until the operator sees you and signals you over and the blade or implements are lowered and idled down.
- Avoid walking under where the equipment is working.
- Ensure operator can see you at night. Use a headlamp and or glow stick.
- Establish visual and radio communication prior to engaging.
- Communicate all hazards to operator



Demob Safety Guidelines

- Ensure that you have enough rest to satisfy the 2-to-1 work/rest ratio.
- No driver will drive more than 10 hours (behind the wheel) within a duty-day.
- Multiple drivers in a single vehicle may drive up to the duty-day limitation provided no driver exceeds the individual driving time limitation of 10 hour days.
- A driver shall drive only if they have had at least 8 consecutive hours off duty before beginning a shift.
- If approved, identify your "Rest-Over-Night" location in advance. Check in regularly with your home unit and update your travel plans.
- If you are tired, please stop and take a short break.
- If there is a passenger, they should try and stay awake during the hours of darkness to increase the safety factor.
- Before departing, complete a vehicle "walk around".
- Ensure windshield is clean and floor is free of possible rolling materials.
- Please don't drive distracted....thanks.

USFS

COVID mitigation efforts are imperative in order for us to complete our mission!

PREVENTION AND MANAGEMENT

Monitor yourself and your crew

Wear face coverings

Physical distance

Clean and Disinfect

Isolate when ill

REPORTING GUIDLINES

In the event of a symptomatic person or persons, isolate those that are symptomatic, then contact the Incident Medical Unit Leader immediately.

Incident Medical Unit Leader

Primary Contact: (702) 480-2352

Secondary Contact: (541) 2704131

COVID SYMPTOMS

- Cough more than expected?
- Shortness of breath or difficulty breathing?
- Fever? Chills?
- Muscle pain, outside of normal for firefighting?
- Sore throat?
- Loss of taste or smell?
- Headache, Fatigue, Nausea or Diarrhea?
- Congestion or runny nose?

Keep yourself healthy

Keep others Healthy

Safeguard our biggest asset....
YOU!

REPORT CONCERNS
THROUGH YOUR CHAIN
OF COMMAND



Test early Test often!!

USDA Forest Service



Free COVID-19 tests are available for
wildland fire personnel!!!

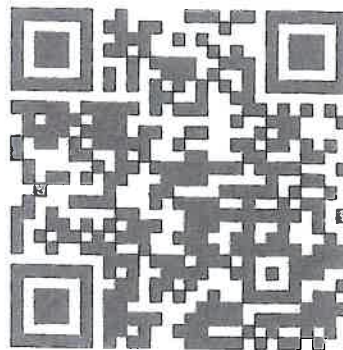
Not just for Forest Service personnel! Anyone associated with wildland fire work is welcome.

To get tested for free, go to the

**Klamath National Forest Headquarters (aka "Klamath
Supervisor's Office")**

1711 South Main St, Yreka, CA 96097 - 6:30 AM to
8:30 PM every day!

Please use the QR code to the right to register (either before or on-site) for the test administered by Emergency Response Logistics, Inc. That QR code will take you to a form.



In the interest of protecting each other and our families, we encourage testing early and often! Please contact testing.klamath1@gmail.com if you have questions or comments.

All USFS employees and non-USFS personnel assigned to fires in the Klamath NF area or passing through Yreka en route to or from fire assignments are encouraged to stop to be tested prior to reporting to the assignment or traveling to another site or home.

A core value of the Forest Service is safety. This testing availability is an additional step in safeguarding human life and protecting our most valuable resources. Our Code and Commitments include being trusted to "do right" by each other and the communities we serve.

UNIT LOG (ICS 214)

1. Incident Name:
RIVER COMPLEX

2. Operational Period: Date From: 10/14/21 Date To: 10/15/21
Time From: 0700 Time To: 0700

3. Unit Name/Designators

4. Unit Leader (Name and ICS Position)

5. Personnel Assigned/Designators

NAME	ICS POSITION	HOME BASE

6. Activity Log (Continue on Reverse)

TIME	MAJOR EVENTS

7. Prepared By: _____ **Date/Time:** _____

MEDICAL PLAN - ICS 206	1. INCIDENT NAME: River Complex	2. DATE PREPARED: 10/13/21	3. TIME PREPARED: 1600	4. OP. PERIOD: 10/14/21 - 10/15/21 0700-0700				
5. INCIDENT MEDCAL AID STATIONS								
MEDICAL AID STATIONS		LOCATION		R.N. & EMT				
Mountain Medics - Medical Support Trailer		ICP - Etna, CA		YES NO X				
6.a. AIR AMBULANCES								
NAME	LOCATION	CONTACT	PARAMEDICS					
Air Ambulance (Area Rotation) / Type 3	Medford, OR	River Communications	YES NO X					
Cal Fire 102 / Type 2	Kneeland, CA	River Communications		X				
CHP (Daytime only Hoist) / Type 3	Redding, CA	River Communications	X					
Coast Guard (Night Hoist) / Type 2	McKinleyville, CA	River Communications	X					
6.b. GROUND AMBULANCES & REMS								
NAME	LOCATION	PARAMEDICS						
Mountain Medics AMB # 1	DP 32	YES NO X						
Mountain Medics AMB # 2	DP 10	X						
RENO REMS	DP 37	X						
7. HOSPITALS _ GPS DATUM - WGS 84								
NAME	ADDRESS	TRAVEL TIME		PHONE LAT, LONG	HELIPAD		BURN CENTER	
		AIR	GRND		YES	NO	YES	NO
Fairchild Medical Center (Level 4 Trauma Center)	444 Bruce St. Yreka, CA	25min.	2 hr.	530-842-4121 Lat: 41 43.20 Long: 122 38.70	X			X
Rogue Regional Medical (Level 2 Trauma Center)	2825 E Barnett Rd. Medford, OR	1 hr.	3 hrs	541-789-7000 Lat: 42 19.10 Long: 122 49.50	X OR99			X
Mercy Medical Center (Level 2 Trauma Center)	2175 Rosaline Ave. Redding, CA	30 min.	3 hrs.	530-225-6000 Lat: 40 34.14 Long: 122 23.97	X 7CA3			X
UC Davis Medical Center (Level 1 Trauma & Burn)	2315 Stockton Blvd. Sacramento, CA	2 hr.	5.5 hrs.	916-734-3636 Lat: 38 33.20 Long: 121 27.28	X 3CLO		X	
8. MEDICAL EMERGENCY PROCEDURES								
LINE "MEDICAL EMERGENCY" PLAN:					LINE "NON-EMERGENCY INCIDENT" PLAN:			
Crew Supervisor to contact Division Supervisor/Operations with: <ul style="list-style-type: none"> • Patient Complaint, Condition and Location via Tactical or Command Frequency. Priority 1/Red & 2/Yellow patients. • <u>Triggers</u> Incident within Incident (IWI) Division Supervisor /*POC contacts River Communications: <ul style="list-style-type: none"> • Division Supervisor /*POC will run "Medical-Emergency" on Command Frequency. • Division Supervisor /*POC use Medical Plan (ICS 206 WF) worksheet in the IAP or IRPG. • Communications contacts Medical Unit Leader on the Command Frequency or cell phone 702-480-2352 *POC (Point of Contact)					Crew Supervisor to contact Division Supervisor with: <ul style="list-style-type: none"> • Patient Complaint, Condition and Location via Tactical or Command Frequency. Priority 3/Green patients. • <u>Does not</u> trigger Incident within Incident (IWI). Division Supervisor/POC contacts River Communications <ul style="list-style-type: none"> • Division Supervisor or *POC will run "Non-Emergency Incident" on the Command Frequency. • Division Supervisor or *POC to use "Medical Incident Report" worksheet on back of this page or in IRPG. • Communications contacts Medical Unit Leader on the Command Frequency or cell phone 209-614-0709 IN-CAMP – 24 HOUR MEDICAL Contact River Communications with: Patient Complaint, Condition, and Location via phone (510)507-5906 or Command Frequency			
ICS 206	9. PREPARED BY: (Medical Unit Leader) Aric Seal MEDL (t)			10. REVIEWED BY: (IC) JB Clay IC (t)				

MEDICAL PLAN (ICS 206 WF)

Controlled Unclassified Information//Basic

Medical Incident Report																													
<p>FOR A NON-EMERGENCY INCIDENT, WORK THROUGH CHAIN OF COMMAND TO REPORT AND TRANSPORT INJURED PERSONNEL AS NECESSARY.</p> <p>FOR A MEDICAL EMERGENCY: IDENTIFY ON SCENE INCIDENT COMMANDER BY NAME AND POSITION AND ANNOUNCE "MEDICAL EMERGENCY" TO INITIATE RESPONSE FROM IMT COMMUNICATIONS/DISPATCH.</p>																													
<p>Use the following items to communicate situation to communications/dispatch.</p>																													
<p>1. CONTACT COMMUNICATIONS / DISPATCH (Verify correct frequency prior to starting report) <i>Ex: "Communications, Div. Alpha, Stand-by for Emergency Traffic."</i></p> <p>2. INCIDENT STATUS: Provide incident summary (including number of patients) and command structure. <i>Ex: "Communications, I have a Red priority patient, unconscious, struck by a falling tree. Requesting air ambulance to Forest Road 1 at (Lat./Long.) This will be the Trout Meadow Medical. IC is TFLD Jones. EMT Smith is providing medical care."</i></p>																													
Severity of Emergency / Transport Priority	<input type="checkbox"/> RED / PRIORITY 1 Life or limb threatening injury or illness. Evacuation need is IMMEDIATE <i>Ex: Unconscious, difficulty breathing, bleeding severely, 2nd - 3rd burns more than 4 palm sizes, heat stroke, disoriented.</i> <input type="checkbox"/> YELLOW / PRIORITY 2 Serious injury or illness. Evacuation may be DELAYED if necessary. <i>Ex: Significant trauma, unable to walk, 2nd - 3rd burns not more than 1-3 palm size.</i> <input type="checkbox"/> GREEN / PRIORITY 3 Minor injury or illness. Non-Emergency transport <i>Ex: Sprains, strains, minor heat-related illness.</i>																												
Nature of Injury or Illness & Mechanism of Injury			<i>Brief Summary of Injury or Illness (Ex: Unconscious, Struck by Falling Tree)</i>																										
Transport Request			<i>Air Ambulance / Short Haul/Hoist Ground Ambulance / Other</i>																										
Patient Location			<i>Descriptive Location & Lat. / Long. (WGS84)</i>																										
Incident Name			<i>Geographic Name + "Medical" (Ex: Trout Meadow Medical)</i>																										
On-Scene Incident Commander			<i>Name of on-scene IC of incident within an incident (Ex: TFLD Jones)</i>																										
Patient Care			<i>Name of Care Provider (Ex: EMT Smith)</i>																										
<p>3. INITIAL PATIENT ASSESSMENT: Complete this section for each patient as applicable (start with the most severe patient)</p> <p>Patient Assessment: See IRPG page 106</p> <p>Treatment:</p>																													
<p>4. TRANSPORT PLAN:</p> <p>Evacuation Location (if different): (Descriptive Location (drop point, intersection, etc.) or Lat. / Long.) Patient's ETA to Evacuation Location:</p> <p>Hellspot / Extraction Site Size and Hazards:</p>																													
<p>5. ADDITIONAL RESOURCES / EQUIPMENT NEEDS:</p> <p><i>Example: Paramedic/EMT, Crews, Immobilization Devices, AED, Oxygen, Trauma Bag, IV/Fluid(s), Splints, Rope rescue, Wheeled litter, HAZMAT, Extrication</i></p>																													
<p>6. COMMUNICATIONS: Identify State Air/Ground EMS Frequencies and Hospital Contacts as applicable</p> <table border="1" style="width: 100%; border-collapse: collapse;"> <thead> <tr> <th style="width: 10%;">Function</th> <th style="width: 20%;">Channel Name/Number</th> <th style="width: 15%;">Receive (RX)</th> <th style="width: 15%;">Tone/NAC *</th> <th style="width: 15%;">Transmit (TX)</th> <th style="width: 25%;">Tone/NAC *</th> </tr> </thead> <tbody> <tr> <td>COMMAND</td> <td></td> <td></td> <td></td> <td></td> <td></td> </tr> <tr> <td>AIR-TO-GRND</td> <td></td> <td></td> <td></td> <td></td> <td></td> </tr> <tr> <td>TACTICAL</td> <td></td> <td></td> <td></td> <td></td> <td></td> </tr> </tbody> </table>						Function	Channel Name/Number	Receive (RX)	Tone/NAC *	Transmit (TX)	Tone/NAC *	COMMAND						AIR-TO-GRND						TACTICAL					
Function	Channel Name/Number	Receive (RX)	Tone/NAC *	Transmit (TX)	Tone/NAC *																								
COMMAND																													
AIR-TO-GRND																													
TACTICAL																													
<p>7. CONTINGENCY: <u>Considerations:</u> If primary options fail, what actions can be implemented in conjunction with primary evacuation method? Be thinking ahead.</p>																													
<p>8. ADDITIONAL INFORMATION: Updates/Changes, etc.</p>																													
<p>REMEMBER: Confirm ETA's of resources ordered. Act according to your level of training. Be Alert. Keep Calm. Think Clearly. Act Decisively.</p>																													