

Sunday

CORRECTED

RIVER COMPLEX

CA-KNF-006385 P5N7CM

INCIDENT ACTION PLAN

Operational Period

09/19/2021 to 09/20/2021

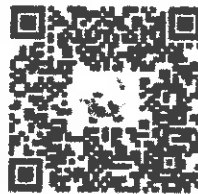
0700-1900 hrs and 1900-0700 hrs



Sacred Heart Catholic Church, Fort Jones, CA
Drawing by Michael Gutierrez, RADO, Murphys FD



Fire Information
707-596-6075
2021.river@firenet.gov



New links added! Now available
via QR Code: Day Shift and Night Shift
Operational Briefings on Zoom



Sunday

INCIDENT OBJECTIVES (ICS 202)	1. RIVER COMPLEX	9/18/2021	3. TIME: 1800
--------------------------------------	-------------------------	-----------	------------------

4. OPERATIONAL PERIOD (DATE/TIME): 9/19/2021 to 9/20/2021, Day 0700-1900 / Night 1900-0700

5. OBJECTIVES:

Strategic Framework

Implement a full suppression strategy on the fires within the River Complex. Values at risk include human safety, communities, private timberlands, critical infrastructure, associated improvements, and wilderness values. Apply tactics that offer the highest probability of success commensurate with resource availability.

Leaders Intent

Provide the highest level of customer service to all involved with or impacted by the River Complex. Ensure transparent, timely and accurate communication at all levels of the incident and strengthen relationships with cooperators. All incident assigned personnel should be prepared to take appropriate actions regarding:

- Professional behavior, conduct, and timely/effective communication.
- Personal safety and the safety of others, including driving slowly and defensively.
- Manage fatigue by taking breaks and maintaining work/rest cycles.
- Minimize risk and limit exposure to infectious disease by minimizing large group settings, social distancing, wearing face coverings, and handwashing.

Management Objectives

- Provide for firefighter and public safety through hazard recognition and application of the risk management process.
- Coordinate public information with Monument fire and other local fires to provide timely and continuous information to affected agency partners, cooperators, and to the public.
- Coordinate suppression activities with assigned incident Resource Advisors to minimize impacts to wilderness, natural and cultural resources.

Control Objectives

Keep the Cronan fire within existing control lines.

To prevent the Haypress fire from spreading to private property, surrounding communities, and impacting values at risk, keep the fire:

- South of Cecilville Road.
- West of the Hwy 3.
- North of Long Valley Road.
- East of the 2020 Red Salmon fire footprint.

Site Safety Plan Required Yes No Approved Site Safety Plan Located at: N/A

9. Attachments (☑ if attached):
- | | | |
|---------------------------------|--|--------------------|
| ☑ Organization List (ICS 203) | ☑ Medical Plan (ICS 206) | ☑ Finance Message |
| ☑ Weather Forecast | ☑ Air Ops (ICS 220) | ☑ Training Message |
| ☑ Fire Behavior Forecast | ☑ HR Message | ☑ Unit Log 214 |
| ☑ Safety Message | ☑ Assignment List (ICS 204) | ☑ Tentative Demob |
| ☑ Communications Plan (ICS 205) | <input type="checkbox"/> READ/REAF message | ☑ Site Map |



10. PREPARED BY (PLANNING SECTION CHIEF)
Walter J. King

11. APPROVED BY (INCIDENT COMMANDER)
[Signature]

ORGANIZATION ASSIGNMENT LIST (ICS 203)

1. Incident Name: RIVER COMPLEX		2. Operational Period: Date From: 9/19/2021 Time From: 0700		Date To: 9/20/2021 Time To: 0700	
3. Incident Commander(s) and Command Staff:			7. Operation Section:		
IC/UC's Nickle Johnny/Lucas Minton (T)		Day Operations		John Goss/Maeve Juarez (T)	
Deputy Bea Day		Planning Operations		Rob Laeng/Jake Botts (T)	
Safety Officer Paul Leusch		Night Operations		Josh Eichamer (T)	
Information Officer Daron Wyatt/Mike Lindbery					
Liaison Officer Robbin Ekman/D. Hays (T)/R. Francis (T)		Branch		V	
				David Neels	
4. Agency/Organization Representatives:			Division/Group		N
Agency/Organization		Name		Division/Group	
				Q	
Klamath NF		Rachel Smith/Bill Edwards		R	
				S	
Shasta-Trinity NF		Rachel Birkey/Derek Iburguen		T	
Six Rivers NF		Nolan Colegrove			
CalFire SKU		Greg Roath		CONTINGENCY SOUTH	
Karuk Tribal Government		Vikki Preston		Brian Tai	
Siskiyou County SO		LT Bob Giannini			
Trinity County SO		SGT Will Oliver			
CHP		Rich Mendes			
Cal Trans		Miles Cochran			
Private Forestry		Darln Quigley			
CCC		Shawn Fry			
Lead READ		Derek Beal		Branch	
				X	
Lead ARCH		Amanda Rasmussen		Cronan	
CAL OES		Pat Titus		U/K/L	
Covid Advisor		David Peters		M	
5. Planning Section:			Division/Group		
Chief		Walter Herzog/Aaron Grove (T)		Division/Group	
Demobilization Unit		Imma Contreras/K. Stuart (T)		Division/Group	
Resource Unit		J. Ferguson/H. Meyers/J. Dean (T)		Branch	
				NIGHT	
Situation Unit		Terry Williamson/John Mosley		Cronan	
Documentation Unit		Johanna Ostling		N/Q/R	
SCKN		Jessica Kingsbury		U/K/L/M	
HRSP		Julie Nelson			
ITSS		Gerald Fong/Stephanie Medina (T)			
FBAN		Dennis Burns/David Duran (T)			
IMET		Terry Lebo/Noah Myers(T)		Air Operations Branch	
GISS		Carvei Bass/Sage Reuter (T)		Air Support Group Supervisor	
Training Specialist		Dominic Panno		Air Tactical Group Supervisor	
				Helibase Manager	
				Lee Stewart/Efrain Garcia	
6. Logistics Section			8. Finance/Administration Section:		
Chief		Thomas Crakes		Chief	
Supply Unit		Randolph Browning		Lawrence Lee/Robert Taylor (T)	
FACL/SECM		Jason Hodge		Time Unit	
Ground Support Unit		M. Fitzgerald/M. Hoffman/J. Craddock		Tracy Falls (T)	
Communications Unit		Kevin Harper		Procurement Unit	
Medical Unit		Scott Mohlenbrok/Andy Branson (T)		Comp/Claims Unit	
ORDM		Casey Lewis (T)/Henry Morris (T)		Cost Unit	
Trinity Spike LSC3		Chris Johansen		Equipment Time	
Trinity Spike FACL		Art Preciado			
Trinity Spike RCDM		Josh Wilcox			
Etna ICP RCDM		Troy Warren			
FDUL		Mary Naylor (T)			
Prepared By: Name:		Walter Herzog/Aaron Grove (Position/Title: PSC		Signature: _____	
ICS 203		Date/Time: 9/18/2021 2300 hours			



River Complex Weather Forecast



FORECAST NO:	47	NAME OF FIRE:	River Complex
PREDICTION FOR:	Sun 0700 to Thu 0700	UNIT:	Klamath National Forest
SHIFT DATE:	September 19, 2021	Incident Meteorologist:	Terry Lebo, Noah Myers (T)
FORECAST ISSUED:	1900 September 18, 2021		

WEATHER DISCUSSION

Isolated light rain showers are possible this morning, with little additional accumulation. Clouds will decrease by early afternoon with mostly clear skies by the end of the day. Expect breezy north winds through the evening, especially along ridgetops where gusts could occasionally reach 20 mph. Looking ahead, a warming and drying trend will set in through the week.

SUNDAY:

WEATHER: Occasional rain showers in the morning. Decreasing clouds in the afternoon.

MAX TEMPERATURES: Above 5500 ft: 45-54°F
Below 5500 ft: 54-65°F

MIN HUMIDITY: 30-45%

CLOUD COVER @ 1500 20%

CHANCE WETTING RAIN 20%

20 FOOT WINDS: Ridge Lines: From the northwest 10 to 12 mph with gusts 15 to 20 mph.
Valleys: From the northwest 5 to 8 mph.

LAL: 1

SUNDAY NIGHT:

WEATHER: Dry, partly cloudy.

MIN TEMPERATURES: 35-45°F

MAX HUMIDITY: 55-80%

CHANCE WETTING RAIN 0%

20 FOOT WINDS: Ridge Lines: From the northeast 8 to 12 mph with gusts to 18 mph.
Valleys: Northeast 5 to 8 mph.

OUTLOOK

MONDAY: Clear. Highs 60 to 78°F, lows 45 to 55°F. Min RH 20-40%. Max RH 35-45%. Winds from the northeast 10 to 15 mph with gusts around 20 mph.

TUESDAY: Clear. Highs 65 to 85°F, lows 48 to 58°F. Min RH 15-25%. Max RH 30-40%. Winds from the south 5 to 10 mph with gusts to 12 mph.

WEDNESDAY: Partly cloudy. Highs 63 to 83°F, lows 45 to 55°F. Min RH 20-30%. Max RH 40-50%. Winds from the west 5 to 10 mph with gusts to 14 mph.

FIRE BEHAVIOR FORECAST

FORECAST NUMBER: 45	TYPE OF FIRE: Wildfire
FIRE NAME: River Complex	OPERATIONAL PERIOD: September 19, 2021 24hr
DATE ISSUED: 9/18/21	TIME ISSUED: 2000
UNIT: CA-KNF, CA-SHF	SIGNED: _____ Typed/printed: Dennis Burns/s/ Dave Duran (T)/s/

INPUTS

WEATHER SUMMARY: Isolated rain showers early, then clear skies in the afternoon

- Today Temps 54-65 RH 30-45%. Wind, NW 10-12 gusts to 15-20 on the ridges, 5-8 below the ridges.
- Tonight Temps 35-45 RH 55-80% Wind NE 8-12 gusts to 18 on the ridges, 5-8 below the ridge.

FUELS SUMMARY: Dense mixed conifer, old-growth timber, heavy dead/down, mixed ground fuels. Fuel models best represented by 10, TL8, TU5, SH7, and GS2.

OUTPUTS

FIRE BEHAVIOR

GENERAL:

*****Fuels advisory active for Northern California*****

- Critically low Live & Dead fuel moistures. 100 and 1,000hr and Live Fuels remain dry.
- Fire behavior will be significantly moderated due to yesterdays' rain.
- Heavy dead fuels/timber-litter/light-flashy fuels are highly receptive and will continue to burn out.

ERC's values will rebound back to high values later in the week. Probability of ignition 60% in the afternoon.

SPECIFIC:

Branch X: Fire will continue to progress to the North and East. Expect slow rates of spread. Heavy fuels will produce intense heat. Pockets of heavy dead and down will hold heat for long periods and produce intense heat. Any spotting will be short range from rollout. Structure threat exists in the Callahan area. Tonight, expect less active fire behavior throughout the shift.

Branch V: The fire remains in a backing and flanking alignment. Expect slow rates of spread. Any spotting will be short range from rollout. Structure threat to the Coffee Creek area still exists. Structure threat exists in the Eagle Creek Loop area. Many natural barriers to fire spread exist throughout the Branch. Tonight, expect less active fire behavior throughout the shift.

Cronan Fire: No fire progression expected.

All Areas: Spotting from rollout will continue to be problematic. Slope-reversals are probable from any fire burning in drainage bottoms. Mop-up is extensive. Smoke will continue to limit aircraft operations. Fire activity will moderate when it reaches the Red Salmon burn scar.

AIR OPERATIONS: Smoke will impact visibility and effect aircraft availability.

SAFETY

- Make sure Lookouts are posted in places where they can see potential spotting.
- Fire weakened timber poses a threat to personnel working in timber areas.
- Unburned fuel between you and the fire.

Fuels and Fire Behavior Advisory

Northern California

September 16, 2021, to September 30, 2021



Subject: Potential for extreme fire behavior due to continued critically low live and dead fuel moistures. Very dry conditions resulting from persistent drought, minimal snowpack and spring precipitation, periods of excessive heat have caused elevated to record fire danger rating values across much of northern California. Anticipated moisture could temporarily reduce some threat across the far north PSAs.

Discussion: Fires burning in northern California continue to exhibit extreme fire growth due to critical fuel conditions. Rapid fire spread can be fuels driven. Wind events have led to extreme rates of spread. Surface fuels are very receptive to embers. Long range spotting, area ignition, and group torching is occurring on large fires frequently.

Difference from normal conditions: Extreme to Exceptional levels of drought conditions continue to exist across much of Northern California. The drought is expected to persist or intensify through the rest of fire season. Deficient rainfall and snowpack with early melt off, coupled with periods of extreme heat has resulted in fuels that are critically dry, with record setting conditions for most areas.

Concerns to Firefighters and the Public:

- Energy Release Component (ERC) at numerous weather stations set record maximums already this year. Recent scattered rain has reduced some ERC values, but fuels are rebounding quickly. Extreme fire behavior has been observed in all fuel types and both live and dead fuels. **Continue to anticipate increased spread rates, spotting, and active nighttime burning.**
- The combination of extreme levels of persistent drought and record-low rainfall and snowpack amounts has led to very low live and dead fuel moistures. 1000-hour fuel moistures continue to trend at record low levels in many areas. Live fuel moistures in grasses, shrubs, and trees, remain at critical levels in many areas of Northern California due to limited green-up this spring. **Expect fires to ignite easier, spread faster and burn hotter. Reports of blistered paint on vehicles have been surprisingly frequent so far this year. Do not expect fires to exhibit reduced fire behavior when entering areas of live fuels; anticipate increased spread rates and spotting.**
- Direct attack is often not feasible under regular diurnal wind conditions with ground resources. Aviation utilization is often insufficient in moderating rate of spread without immediate heavy ground resource response. **Anticipate higher resistance to control in all fuel types.**
- Northern California continues to experience large fire activity and multiple team deployments and will likely experience an extended fire season. It is important to be mindful of and manage fatigue for all resources. **Everyone, every day, returns home safely.**
- The frequency of North to Northeast offshore wind events increases from mid-September into the fall. These strong winds are often accompanied by very low RHs and will pose an increased hazard when combined with this year's critically dry fuels conditions. **Watch for change.**

Mitigation Measures:

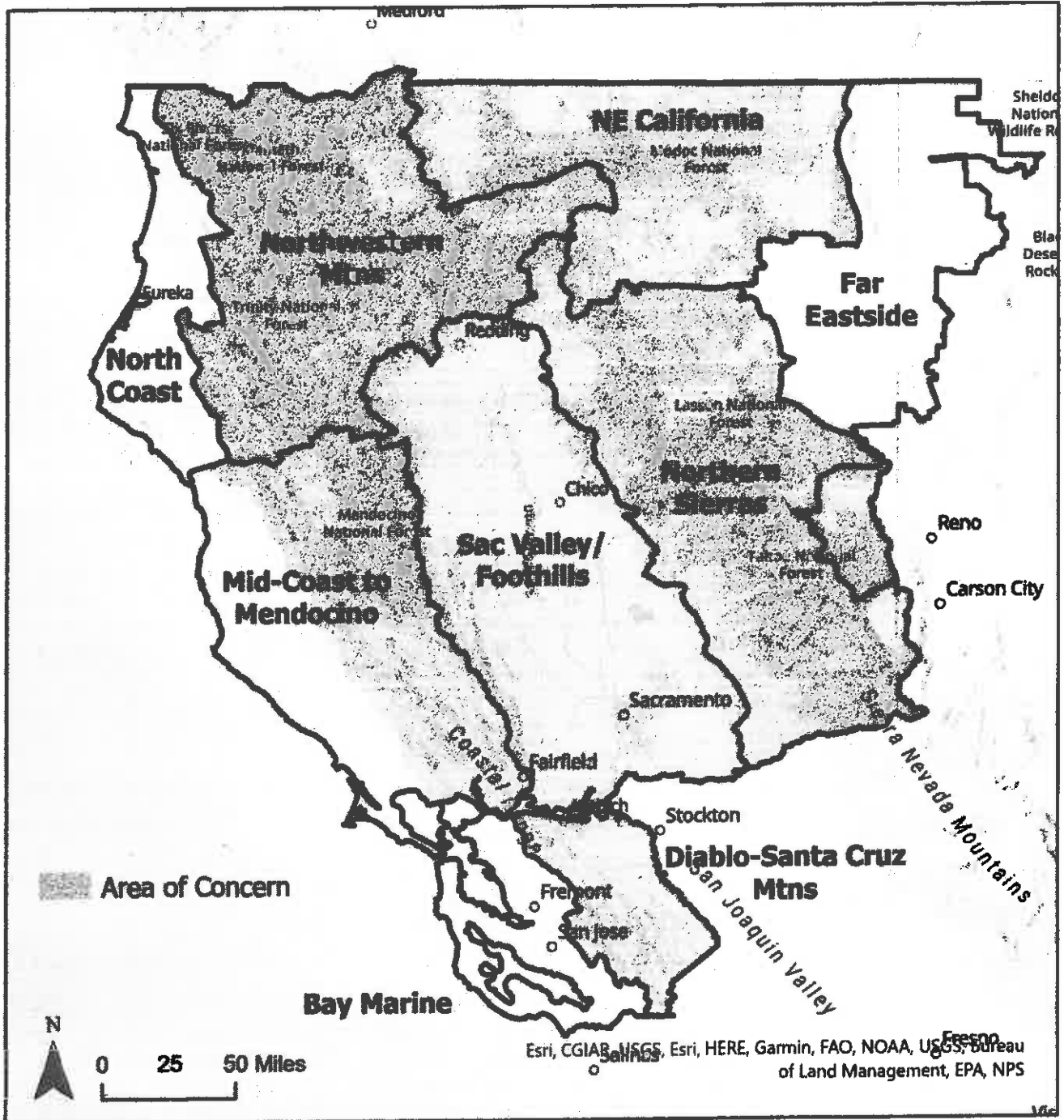
- Local and inbound fire personnel need to be aware that fire behavior across the state is exceeding normal expectations for this time of the year. **Local briefings need to be thorough and highlight specific fire environment conditions. These include but are not limited to local weather forecasts, PocketCards, ERC's, live and dead fuel moistures.**
- Suppression actions need to be based on good anchor points, escape routes, and safety zones. **Remember LCES. Experienced lookouts are essential under these conditions.**
- Base all actions on current and expected behavior of the fire. **Augment initial attack resources as incident activity dictates.**

Area of Concern: Northern California except for the following Predictive Service Areas: North Coast and Bay Marine, west of Highway 101 in Mid-Coast to Mendocino and Diablo-Santa Cruz, and the northeastern portion of Far Eastside.

Fuels and Fire Behavior Advisory

Northern California

September 16, 2021, to September 30, 2021



River Complex Safety Message

Operational Period: 09/19-20/21 0700-0700

Fight Complacency

- Stay mentally engaged on the task at hand
- Give clear briefings.
- Clearly identify the day's mission and purpose.
- Use the "Buddy System" and watch out for each other. If you see something, say something.
- Ask yourself: "Are you doing the job safely, the way you were trained?"
- Look for a "new" or "fresh" approach to repetitive assignments.
- Address complacency in your daily AAR.

Learn From Today

- Give, and demand, a quality briefing... Every shift!
- Speak up, ask questions, listen and communicate!
- Plan ahead!
- Evaluate the day's activity at the end of shift (AAR).
- Adjust the plan, based on what you learn.

To Improve for Tomorrow!

Driving

- When driving keep speed at or **below** the posted speed limit and your headlights on.
- **Stay as far to the right of the road as is safely possible.**
- Drive defensively! Expect the unexpected around every curve.
- Watch for and anticipate civilian traffic.
- Watch out for debris and wildlife on the roads.
- Do not tail gate.
- Always fasten your seat belt before the vehicle is set into motion.

Slow down, slow down, and slow down!

Operational Leadership

- **Take Charge** of assigned resources.
- **Anticipate** changing conditions and potential emergencies.
- **Motivate** firefighters with a "can do safely" attitude.
- **Demonstrate Initiative** by taking action in the absence of orders.
- **Communicate** by giving specific instructions and asking for feedback!
- **Supervise** at the scene of the action.
- **Follow-Up** with feedback and suggestions for improvement.

ASSIGNMENT LIST (ICS 204 WF)

CONTROLLED UNCLASSIFIED INFORMATION/BASIC

1. Incident Name: RIVER COMPLEX	2. Operational Period: Date From: 09/19/21 Date To: 09/20/21 Time From: 0700 Time To: 0700	3. Branch V	Division N
		Page 1 of 2	November

4. Operations Personnel:		Night Ops: Josh Eichamer (T)
Operations Section Chief: John Goss/Maeve Juarez (T)	Branch Director: David Neels	Branch Safety: Larry Wright
Division/Group Supervisor: Jake Akerberg/Andrew Gavin (T)	Air Attack: Rico Gonzalez/Matt Counts	

5. Resources Assigned:		** Resources not in Bold are 24 Hour **					
Resource Identifier	LWD	Leader	Personnel	Request #	Hours	Reporting Location	
HC1 ANF-LITTLE TUJUNGA-IHC	9/21	JOSEPH BUNTON	18	C-230	0700-1900	TRINITY SPIKE	
HC2I LNF-LASSEN CREW 9	9/30	ALLEN SCHULTZ	18	C-215	0700-1900	TRINITY SPIKE	
HC2 PVT-INBOUND	9/21	WES NETTLESHIP	20	C-160	0700-1900	TRINITY SPIKE	
ENG3 SHF-332	9/20	JOHN CHANDLER	7	E-552	0700-1900	TRINITY SPIKE	
ENG3 MNF-336 - Demob	9/29	BRAD TOVAR	5	E-691	0700-1900	TRINITY SPIKE	
ENG3 CO-CDPS-2279 - Demob	9/29	RYAN ANDERSON	4	E-224	0700-1900	TRINITY SPIKE	
ENG3 PVT-J3 CONTRACTING E-452	9/26	CLAYTON CONSTANT	3	E-452	0700-1900	TRINITY SPIKE	
ENG3 PVT-MOUNTAIN CAMEL - Demob	10/1	SHAWN WIPPERT	3	E-688	0700-1900	TRINITY SPIKE	
ENG6 UT-MLF-611	9/19	KYLER HATCH	5	E-523	0700-1900	TRINITY SPIKE	
ENG6 AZ-NAA-3665	9/25	JASON HERRICK	3	E-637	0700-1900	TRINITY SPIKE	
ENG6-LKR-8561	9/28	KEGAN SPENCER	5	E-683	0700-1900	TRINITY SPIKE	
ENG6 CO-CRD-1613	9/19	ALEX TELACKI	4	E-525	0700-1900	TRINITY SPIKE	
ENG6 PVT-BLUE SKY FIRE E-689	9/29	ALEX PARKER	3	E-689	0700-1900	TRINITY SPIKE	
ENG6 PVT-R CONSTRUCTION	10/1	RICHARD DEROCHE	3	E-730	0700-1900	TRINITY SPIKE	
DOZ2-PVT-MOBLEY	9/29	HOLDEN PALMER	2	E-182	0700-1900	TRINITY SPIKE	
DOZ3 PVT-JUNGWIRTH	10/3	SAM HENDRIX	2	E-126	0700-1900	TRINITY SPIKE	
MAST PVT-DENNIS	9/25	PAT DENNIS	2	E-624	0700-1900	TRINITY SPIKE	
MAST PVT-ZEB'S TREE SERVICE	9/20	SCOTT KROHN	2	E-320	0700-1900	TRINITY SPIKE	
MAST PVT-DAVIS CORP. E-559	9/26	CHASE NUGENT	2	E-559	0700-1900	TRINITY SPIKE	
LDFR PVT-SW MAINT CORP	9/22	GARY WRIGHT	1	E-569	0700-1900	TRINITY SPIKE	
CHIP-PVT-DAVIS CORP	10/6	LEVI MERRILL	1	E-623	0700-1900	TRINITY SPIKE	
WTT2 PVT-GREAT BASIN FIRE	10/4	GENE HANCOCK	2	E-439	0700-1900	TRINITY SPIKE	
WTS2 PVT-GRANITE COMMERCIAL	9/26	JAMES JOHNSON	1	E-235	0700-1900	TRINITY SPIKE	

6. Work Assignments:
Mop up and patrol direct line to the north of Coffee Creek. Continue to improve in-direct line as it progresses to the north around Eagle Creek subdivision. Provide structure protection to property along the Hwy 3 corridor. Scout for direct line opportunities to minimize the fire footprint on private lands.

7. Special Instructions:
Avoid travel over the small bridge in Eagle Creek subdivision. Identify and collect equipment for backhaul. READS will check in and out and with DIVS. Continue to collaborate with READS. All natural and cultural resource concerns are flagged with orange/white candy-stripe flagging. Mountain Medics AMBU #1 is available to Branch V DIVS.

8. Communications							
Name	Ch	Function	Rx Freq	Rx Tone	Tx Freq	Tx Tone	Notes
NIFC C31	5	COMMAND	173.0250N	T-9 100.0	163.8250N	T-9 100.0	CRAGGY PEAK
NIFC C86	7	COMMAND	166.1250N	T-9 100.0	162.1750N	T-9 100.0	BRANCH V, PACKERS PEAK
NIFC C97	B.5	COMMAND	168.1375N	T-9 100.0	165.1500N	T-9 100.0	BRANCH V, DIV Q - ROZ POINT
NIFC C112	B.6	COMMAND	173.8000N	T-9 100.0	162.0750N	T-9 100.0	BR V, BONANZA KING
R5 T4	B.10	TACTICAL	166.5500N	T-9 100.0	166.5500N	T-9 100.0	BR X, DIV KUI, BR V, DIV N, NIGHT DIV N/Q/R
A/G CMD	13	AIR TO GROUND	169.1500N		169.1500N		AIR TO GROUND COMMAND
A/G TAC	14	AIR TO GROUND	162.8125N		162.8125N		AIR TO GROUND TACTICAL
CALCORD	15	MEDICAL	156.0750N	T6 - 156.7	156.0750N	T6 - 156.7	MEDEVAC COORDINATION
AIRGUARD	16	AIRGUARD	168.6250N		168.6250N	110.9	TOPE ON TRANSMIT ONLY - URGENT AIRCRAFT CONTACT

9. Prepared by: Name:	J. Ferguson/H. Meyers/J. Dean (T)	RESL	<i>N.H.</i>
ICS 204	Date/Time: 9/18/2021	2200	Personnel Count: 116

ASSIGNMENT LIST (ICS 204 WF)

CONTROLLED UNCLASSIFIED INFORMATION/BASIC

1. Incident Name: RIVER COMPLEX	2. Operational Period: Date From: 09/19/21 Date To: 09/20/21 Time From: 0700 Time To: 0700	3. Branch Division V N Page 2 of 2 November
--	---	--

4. Operations Personnel:	
Operations Section Chief: John Goss/Maeve Juarez (T)	Night Ops: Josh Eichamer (T)
Branch Director: David Neels	Branch Safety: Larry Wright
Division/Group Supervisor: Jake Akerberg/Andrew Gavin (T)	Air Attack: Rico Gonzalez/Matt Counts

5. Resources Assigned:	** Resources not in Bold are 24 Hour **						
Resource Identifier	LWD	Leader	Personnel	Request #	Hours	Reporting Location	
TFLD PETERMAN	9/24	FORREST PETERMAN	1	O-1146	0700-1900	TRINITY SPIKE	
TFLD GRAHAM (T)	9/28	CHRISTOPHER GRAHAM	1	O-1327	0700-1900	TRINITY SPIKE	
TFLD (T) THOMPSON	9/27	BRYAN THOMPSON	1	O-1306	0700-1900	TRINITY SPIKE	
HEQB SANDERS	9/20	JOHN SANDERS	1	O-1204	0700-1900	TRINITY SPIKE	
HEQB(T) LOWRY	10/1	STEPHEN LOWRY	1	O-1383	0700-1900	TRINITY SPIKE	
AZ-FRY MEDICAL TEAM 2	9/30	ADAM SHORT	2	O-1351	0700-1900	TRINITY SPIKE	
RES ROUGH COUNTRY MED. TEAM 3	10/2	NORM ROOKER	2	E-727	0700-1900	TRINITY SPIKE	
REAF SANTILLAN	9/21	EVERARDO SANTILLAN	1	O-753	0700-1900	TRINITY SPIKE	
READ SMITH	9/19	A'NAKA SMITH	1	O-992	0700-1900	TRINITY SPIKE	
REAF PROCHOVNIK	9/22	T. PROCHOVNIK	1	O-1068	0700-1900	TRINITY SPIKE	
REAF BARRAGAR	9/25	JOTHAM BARRAGAR	1	O-1222	0700-1900	TRINITY SPIKE	
REAF RADEMACHER	9/26	ERIK RADEMACHER	1	O-1271	0700-1900	TRINITY SPIKE	
REAF HUSTON	9/28	KELCY HUSTON	1	O-1227	0700-1900	TRINITY SPIKE	
ENG6 L&A		Justin Williams	3	E-744			
ENG3 Grayback		Willy Volz	3	E-737			
DOZ2 PVT-LAP		Cody Conde	2	E-331	(from S. Cont)		
FMOD Brothers		Andy Mckee	2	O-1150	(from S. Cont)		
FMOD Brothers DIVE M		Reumundo Reyes	21	C-216	(from Night N/Q/R)		
ENG3 AZ-ORACLE 692		Tyler McGovern	4	E-732	(from Night N/Q/R)		

6. Work Assignments:
Mop up and patrol direct line to the north of Coffee Creek. Continue to improve in-direct line as it progresses to the north around Eagle Creek subdivision. Provide structure protection to property along the Hwy 3 corridor. Scout for direct line opportunities to minimize the fire footprint on private lands.

7. Special Instructions:
Avoid travel over the small bridge in Eagle Creek subdivision. Identify and collect equipment for backhaul. READS will check in and out and with DIVS. Continue to collaborate with READS. All natural and cultural resource concerns are flagged with orange/white candy-stripe flagging. Mountain Medics AMBU #1 is available to Branch V DIVS.

8. Communications							
Name	Ch	Function	Rx Freq	Rx Tone	Tx Freq	Tx Tone	Notes
NIFC C31	5	COMMAND	173.0250N	T-9 100.0	163.8250N	T-9 100.0	CRAGGY PEAK
NIFC C86	7	COMMAND	166.1250N	T-9 100.0	162.1750N	T-9 100.0	BRANCH V, PACKERS PEAK
NIFC C97	B.5	COMMAND	168.1375N	T-9 100.0	165.1500N	T-9 100.0	BRANCH V, DIV Q - ROZ POINT
NIFC C112	B.8	COMMAND	173.6000N	T-9 100.0	162.0750N	T-9 100.0	BR V, BONANZA KING
R5 T4	B.10	TACTICAL	166.5500N	T-9 100.0	166.5500N	T-9 100.0	BR X, DIV KU, BR V, DIV N, NIGHT DIV N/Q/R
A/G CMD	13	AIR TO GROUND	169.1500N		169.1500N		AIR TO GROUND COMMAND
A/G TAC	14	AIR TO GROUND	162.8125N		162.8125N		AIR TO GROUND TACTICAL
CALCORD	15	MEDICAL	156.0750N	T6 - 156.7	156.0750N	T6 - 156.7	MEDEVAC COORDINATION
AIRGUARD	16	AIRGUARD	168.6250N		168.6250N	110.9	STONE ON TRANSMIT ONLY - URGENT AIRCRAFT CONTACT

9. Prepared by: Name: J. Ferguson/H. Meyers/J. Dean (T) RESL **W.H.**
ICS 204 Date/Time: 9/18/2021 2200 Personnel Count: 15

ASSIGNMENT LIST (ICS 204 WF)

CONTROLLED UNCLASSIFIED INFORMATION/BASIC

1. Incident Name: RIVER COMPLEX	2. Operational Period: Date From: 09/19/21 Date To: 09/20/21 Time From: 0700 Time To: 0700	3. Branch Division V Q Page 1 of 2 Quebec
--	---	---

4. Operations Personnel: Operations Section Chief: John Goss/Maeve Juarez (T) Branch Director: David Neels Division/Group Supervisor: Mike Hildebrand/Luke Langhorst (T)		Night Ops: Josh Elchamer (T) Branch Safety: Larry Wright Air Attack: Rico Gonzalez/Matt Counts
---	--	---

5. Resources Assigned:	** Resources not in Bold are 24 Hour **					
Resource Identifier	LWD	Leader	Personnel	Request #	Hours	Reporting Location
HC2 PVT-R&R CONTRACTING	9/28	ALFREDO MARCELINO	20	C-211	0700-1900	TRINITY SPIKE
SMOD AZ-KNF-71	9/19	RYAN ALLEN	10	O-1010	0700-1900	TRINITY SPIKE
WFM2 SRF-SIX RIVERS	10/2	TRISTAN KIEHL	9	O-1417	0700-1900	TRINITY SPIKE
ENG3 KNF-345	9/21	JON MANN	5	E-9	0700-1900	TRINITY SPIKE
ENG3 PNF-313	9/22	ERIC GUZMAN	5	E-581	0700-1900	TRINITY SPIKE
ENG3 SHF-361	9/27	LONNY HAGEDON	5	E-666	0700-1900	TRINITY SPIKE
ENG3 PVT-LITE EM UP E-101	9/19 9/20	JAMES EVANS	3	E-101	0700-1900	TRINITY SPIKE
ENG3 AZ-PNP-523	9/23	DAVID MENIJIVAR	4	E-616	0700-1900	TRINITY SPIKE
ENG4 ID-BOF-451	9/19	COLTER STEWART	6	E-528	0700-1900	TRINITY SPIKE
ENG4 WY-ALX-B11	9/23	BOB MCCANN	3	E-603	0700-1900	TRINITY SPIKE
ENG4 PVT-SUNDANCE FIRE E-583	9/22	BEAU PATTERSON	3	E-583	0700-1900	TRINITY SPIKE
ENG6 MT-BRF-651	9/28	JARROD CHANDLER	6	E-682	0700-1900	TRINITY SPIKE
ENG6 PVT-SMITHFIELD-641 → Demob	9/18	SHANE MITCHELL	3	E-591	0700-1900	TRINITY SPIKE
ENG6 AZ-ASF-673	9/22	TYLER HALL	6	E-613	0700-1900	TRINITY SPIKE
ENG6 PVT-DIAMOND FIRE E-615	9/23	TYLER DYER	3	E-615	0700-1900	TRINITY SPIKE
ENG6 PVT-NATIONAL WILDLAND E-6	9/23	AARON MANDEL	3	E-617	0700-1900	TRINITY SPIKE
DOZ2-PVT-EMERY FARM	9/20	NEPHI ROUNDY	2	E-401	0700-1900	TRINITY SPIKE
MAST PVT-A&F ENTERPRISES	9/25	DAN FOURMIER	2	E-405	0700-1900	TRINITY SPIKE
FEL1 PVT-RESTORATION SOLUTION	9/28	LAWRENCE MARTIN	2	E-465	0700-1900	TRINITY SPIKE

6. Work Assignments:
~~Identify control lines to the South of Coffee Creek Road and advance construction to support the strategy. Prepare lines to be defended as wildfire advances. Defend the communities of Coffee Creek and Trinity Center and keep them safe from wildfire.~~
Mop up 100' from black edge. Backhaul and account for equipment in Coffee Creek. Coordinate with Ground Support. Backhaul trash.

7. Special Instructions:
 Identify and collect equipment for backhaul.
 READS will check in and out and with DIVS. Continue to collaborate with READs. All natural and cultural resource concerns are flagged with orange/white candy-stripe flagging.
 Mountain Medics AMBU #1 is available to Branch V DIVS.

8. Communications							
Name	Ch	Function	Rx Freq	Rx Tone	Tx Freq	Tx Tone	Notes
NIFC C31	5	COMMAND	173.0250N	T-9 100.0	163.8250N	T-9 100.0	CRAGGY PEAK
NIFC C86	7	COMMAND	166.1250N	T-9 100.0	162.1750N	T-9 100.0	BRANCH V, PACKERS PEAK
NIFC C97	B.5	COMMAND	168.1375N	T-9 100.0	165.1500N	T-9 100.0	BRANCH V, DIV Q - ROZ POINT
NIFC C112	B.6	COMMAND	173.6000N	T-9 100.0	162.0750N	T-9 100.0	BR V, BONANZA KING
R5 T5	B.11	TACTICAL	167.1125N	T-9 100.0	167.1125N	T-9 100.0	BR V, DIV Q
A/G CMD	13	AIR TO GROUND	169.1500N		169.1500N		AIR TO GROUND COMMAND
A/G TAC	14	AIR TO GROUND	162.8125N		162.8125N		AIR TO GROUND TACTICAL
CALCORD	15	MEDICAL	156.0750N	T6 - 156.7	156.0750N	T6 - 156.7	MEDEVAC COORDINATION
AIRGUARD	16	AIRGUARD	168.6250N		168.6250N	110.9	PHONE ON TRANSMIT ONLY - URGENT AIRCRAFT CONTACT

9. Prepared by: Name: J. Ferguson/H. Meyers/J. Dean (T)	RESL	<i>W.H.</i>
ICS 204	Date/Time: 9/18/2021 2200	Personnel Count: 100

ASSIGNMENT LIST (ICS 204 WF)

CONTROLLED UNCLASSIFIED INFORMATION/BASIC

1. Incident Name: RIVER COMPLEX	2. Operational Period: Date From: 09/19/21 Date To: 09/20/21 Time From: 0700 Time To: 0700	3. Branch V	Division Q
--	---	------------------------------	-----------------------------

Page 2 of 2

Quebec

4. Operations Personnel: Operations Section Chief: John Goss/Maeve Juarez (T) Branch Director: David Neels Division/Group Supervisor: Mike Hildebrand/Luke Langhorst (T)	Night Ops: Josh Elchamer (T) Branch Safety: Larry Wright Air Attack: Rico Gonzalez/Matt Counts
--	--

Resource Identifier	LWD	Leader	Personnel	Request #	Hours	Reporting Location
WTS2 PVT-HURLIMANN	10/3	COLBY GULLY	1	E-273	0700-1900	TRINITY SPIKE
WTS2 PVT-ROCKY MOUNTAIN FIRE	9/23	JIMMY FOSTER	1	E-352	0700-1900	TRINITY SPIKE
WTS2 PVT-H & H FEEDERS	9/24	MARK HURLIMANN	1	E-179	0700-1900	TRINITY SPIKE
FMOD PVT-W. MOUNTAIN TIMBER	9/22	DAN KECK	2	O-823	0700-1900	TRINITY SPIKE
EMPF SPELLMAN	9/25	RONALD SPELLMAN	1	O-1004	0700-1900	TRINITY SPIKE
<i>ENG6 UT-CO BR11</i>		<i>Nathan Trujillo</i>	<i>3</i>	<i>E-690</i>	<i>(from S. Cont.)</i>	
<i>ENG6 Big State</i>		<i>Antonio Dehesa</i>	<i>3</i>	<i>E-338</i>	<i>(from S. Cont.)</i>	

6. Work Assignments:
~~Identify control lines to the South of Coffee Creek Road and advance construction to support the strategy. Prepare lines to be defended as wildfire advances. Defend the communities of Coffee Creek and Trinity Center and keep them safe from wildfire.~~

7. Special Instructions:
 Identify and collect equipment for backhaul.
 READS will check in and out and with DIVS. Continue to collaborate with READS. All natural and cultural resource concerns are flagged with orange/white candy-stripe flagging.
 Mountain Medics AMBU #1 is available to Branch V DIVS.

8. Communications:							
Name	Ch	Function	Rx Freq	Rx Tone	Tx Freq	Tx Tone	Notes
NIFC C31	5	COMMAND	173.0250N	T-9 100.0	163.8250N	T-9 100.0	Craggy Peak
NIFC C86	7	COMMAND	166.1250N	T-9 100.0	162.1750N	T-9 100.0	Branch V, Packers Peak
NIFC C97	B.5	COMMAND	168.1375N	T-9 100.0	165.1500N	T-9 100.0	Branch V, Div Q - Roz Point
NIFC C112	B.6	COMMAND	173.6000N	T-9 100.0	162.0750N	T-9 100.0	BR V, Bonanza King
R5 T5	B.11	TACTICAL	167.1125N	T-9 100.0	167.1125N	T-9 100.0	BR V, Div Q
A/G CMD	13	AIR TO GROUND	169.1500N		169.1500N		AIR TO GROUND COMMAND
A/G TAC	14	AIR TO GROUND	162.8125N		162.8125N		AIR TO GROUND TACTICAL
CALCORD	15	MEDICAL	156.0750N	T6 - 156.7	156.0750N	T6 - 156.7	MEDEVAC COORDINATION
AIRGUARD	16	AIRGUARD	168.6250N		168.6250N	110.9	tone on transmit only - urgent aircraft contact

9. Prepared by: Name:	J. Ferguson/H. Meyers/J. Dean (T)	RESL	GAH		
ICS 204	Date/Time: 9/18/2021	2200		Personnel Count	6

ASSIGNMENT LIST (ICS 204 WF)

CONTROLLED UNCLASSIFIED INFORMATION/BASIC

1. Incident Name: RIVER COMPLEX	2. Operational Period: Date From: 09/19/21 Date To: 09/20/21 Time From: 0700 Time To: 0700	3. Branch Division V R
--	---	---

4. Operations Personnel: Operations Section Chief: John Goss/Maeve Juarez (T) Branch Director: David Neels Division/Group Supervisor: Unstaffed	Night Ops: Josh Eichamer (T) Branch Safety: Larry Wright Air Attack: Rico Gonzalez/Matt Counts
--	---

5. Resources Assigned:	** Resources not in Bold are 24 Hour **					
Resource Identifier	LWD	Leader	Personnel	Request #	Hours	Reporting Location

6. Work Assignments:
Unstaffed

7. Special Instructions:

8. Communications							
Name	Ch	Function	Rx Freq	Rx Tone	Tx Freq	Tx Tone	Notes
NIFC C31	5	COMMAND	173.0250N	T-9 100.0	163.8250N	T-9 100.0	Craggy Peak
NIFC C86	7	COMMAND	166.1250N	T-9 100.0	162.1750N	T-9 100.0	BRANCH V, PACKERS PEAK
NIFC C97	B.5	COMMAND	168.1375N	T-9 100.0	165.1500N	T-9 100.0	BRANCH V, DIV Q - ROZ POINT
NIFC C112	B.6	COMMAND	173.6000N	T-9 100.0	162.0750N	T-9 100.0	BR V, BONANZA KING
R5 T6	B.12	TACTICAL	168.2375N	T-9 100.0	168.2375N	T-9 100.0	BR X, DIV R
A/G CMD	13	AIR TO GROUND	169.1500N		169.1500N		AIR TO GROUND COMMAND
A/G TAC	14	AIR TO GROUND	162.8125N		162.8125N		AIR TO GROUND TACTICAL
CALCORD	15	MEDICAL	156.0750N	T6 - 156.7	156.0750N	T6 - 156.7	MEDEVAC COORDINATION
AIRGUARD	16	AIRGUARD	168.6250N		168.6250N	110.9	tone on transmit only - URGENT AIRCRAFT CONTACT

9. Prepared by: Name: J. Ferguson/H. Meyers/J. Dean (T) RESL *W.H.* Personnel Count: 0

ICS 204 Date/Time: 9/18/2021 2200

NIMS IAP

CONTROLLED UNCLASSIFIED INFORMATION/BASIC

ASSIGNMENT LIST (ICS 204 WF)

CONTROLLED UNCLASSIFIED INFORMATION/BASIC

1. Incident Name: RIVER COMPLEX	2. Operational Period: Date From: 09/19/21 Date To: 09/20/21 Time From: 0700 Time To: 0700	3. Branch Division V S Page 1 of 1 Sierra
--	--	--

4. Operations Personnel:	
Operations Section Chief: John Goss/Maeve Juarez (T) Branch Director: David Neels Division/Group Supervisor: Unstaffed	Night Ops: Josh Elchamer (T) Branch Safety: Larry Wright Air Attack: Rico Gonzalez/Matt Counts

5. Resources Assigned:							
** Resources not in Bold are 24 Hour **							
Resource Identifier	LWD	Leader	Personnel	Request #	Hours	Reporting Location	

6. Work Assignments: Unstaffed
--

7. Special Instructions:

8. Communications							
Name	Ch	Function	Rx Freq	Rx Tone	Tx Freq	Tx Tone	Notes
NIFC C86	B.4	COMMAND	166.1250N	T-9 100.0	162.1750N	T-9 100.0	BRANCH V, PACKERS PEAK
NIFC C112	B.6	COMMAND	173.6000N	T-9 100.0	162.0750N	T-9 100.0	BR V, BONANZA KING
NIFC T3	9	TACTICAL	168.6000N	T-9 100.0	168.6000N	T-9 100.0	BR V, DIV S
A/G CMD	13	AIR TO GROUND	169.1500N		169.1500N		AIR TO GROUND COMMAND
A/G TAC	14	AIR TO GROUND	162.8125N		162.8125N		AIR TO GROUND TACTICAL
CALCORD	15	MEDICAL	156.0750N	T6 - 156.7	156.0750N	T6 - 156.7	MEDEVAC COORDINATION
AIRGUARD	16	AIRGUARD	168.6250N		168.6250N	110.9	
							TONE ON TRANSMIT ONLY - URGENT AIRCRAFT CONTACT

9. Prepared by: Name: J. Ferguson/H. Meyers/J. Dean (T) RESL
--

ICS 204	Date/Time: 9/18/2021 2200	Personnel Count: 0
----------------	------------------------------	-----------------------

CONTROLLED UNCLASSIFIED INFORMATION/BASIC

ASSIGNMENT LIST (ICS 204 WF)

CONTROLLED UNCLASSIFIED INFORMATION/BASIC

1. Incident Name: <p style="text-align: center; font-weight: bold; margin: 0;">RIVER COMPLEX</p>	2. Operational Period: Date From: 09/19/21 Date To: 09/20/21 Time From: 0700 Time To: 0700	3. Branch Division <p style="text-align: center; font-size: 2em; font-weight: bold; margin: 0;">V T</p>
--	---	---

Page 1 of 1 Tango

4. Operations Personnel:	
Operations Section Chief: John Goss/Maeve Juarez (T) Branch Director: David Neels Division/Group Supervisor: Unstaffed	Night Ops: Josh Eichamer (T) Branch Safety: Larry Wright Air Attack: Rico Gonzalez/Matt Counts

5. Resources Assigned:							
** Resources not in Bold are 24 Hour **							
Resource Identifier		LWD	Leader	Personnel	Request #	Hours	Reporting Location

6. Work Assignments:
Unstaffed

7. Special Instructions:

8. Communications

Name	Ch	Function	Rx Freq	Rx Tone	Tx Freq	Tx Tone	Notes
NIFC C1	3	COMMAND	170.9750N	T-9 100.0	168.7000N	T-9 100.0	EDDY GULCH LOOKOUT
NIFC C86	7	COMMAND	166.1250N	T-9 100.0	162.1750N	T-9 100.0	BRANCH V, PACKERS PEAK
NIFC T1	8	TACTICAL	168.0500N	T-9 100.0	168.0500N	T-9 100.0	BR V, DIV T
A/G CMD	13	AIR TO GROUND	169.1500N		169.1500N		AIR TO GROUND COMMAND
A/G TAC	14	AIR TO GROUND	162.8125N		162.8125N		AIR TO GROUND TACTICAL
CALCORD	15	MEDICAL	156.0750N	T6 - 156.7	156.0750N	T6 - 156.7	MEDEVAC COORDINATION
AIRGUARD	16	AIRGUARD	168.6250N		168.6250N	110.9	TONE ON TRANSMIT ONLY - URGENT AIRCRAFT CONTACT

9. Prepared by: Name: J. Ferguson/H. Meyers/J. Dean (T) RESL *W.H.*

ICS 204 Date/Time: 9/18/2021 2200 Personnel Count: 0

ASSIGNMENT LIST (ICS 204 WF)

CONTROLLED UNCLASSIFIED INFORMATION//BASIC

1. Incident Name: RIVER COMPLEX	2. Operational Period: Date From: 09/19/21 Date To: 09/20/21 Time From: 0700 Time To: 0700	3. Branch V	Division CONTINGENCY SOUTH
--	---	------------------------------	---

Page 1 of 2

4. Operations Personnel: Operations Section Chief: John Goss/Maeve Juarez (T) Branch Director: David Neels Division/Group Supervisor: Brian Tal	Night Ops: Josh Elchamer (T) Branch Safety: Larry Wright Air Attack: Rico Gonzalez/Matt Counts
--	---

5. Resources Assigned:		** Resources not in Bold are 24 Hour **					
Resource Identifier	LWD	Leader	Personnel	Request #	Hours	Reporting Location	
ENG6 UT-CO-BR11 → <i>Div Q</i>	9/28	NATHAN TRUJILLO	3	E-690	0700-1900	TRINITY SPIKE	
ENG6 PVT-BIG STATE E-338 → <i>Div Q</i>	9/28	ANTONIO PETERSEN	3	E-338	0700-1900	TRINITY SPIKE	
DOZ2-AR-OUF 221	9/27	JUSTIN ROSE	2	E-387	0700-1900	TRINITY SPIKE	
DOZ2-OK-OKS-SE-181	9/30	STEVEN PAINTER	1	E-402	0700-1900	TRINITY SPIKE	
DOZ2-PVT-CRAIG MOUNTAIN	9/22	KYLE ALBRIGHT	2	E-315	0700-1900	TRINITY SPIKE	
DOZ2-PVT-LAP CONTRACTING → <i>Div N</i>	9/20	CODY CONDE	2	E-331	0700-1900	TRINITY SPIKE	
DOZ2 PVT-OWENS FREIGHT	9/26	TYLER HARGIS	2	E-620	0700-1900	TRINITY SPIKE	
DOZ2-PVT-BLACK OPERATIONS	9/30	WILL BLACK	2	E-333	0700-1900	TRINITY SPIKE	
DOZ2 PVT-STOCKMEN'S	9/29	ALAN HARRISON	2	E-622	0700-1900	TRINITY SPIKE	
DOZ2-PVT-DENNIS	9/21	MATT BROWN	2	E-156	0700-1900	TRINITY SPIKE	
MAST PVT-NORTH STATE EQUIP	9/23	CARSON METZ	2	E-558	0700-1900	TRINITY SPIKE	
MAST PVT-HAYDEN CONTRACTING	9/20	CODY HAYDEN	2	E-384	0700-1900	TRINITY SPIKE	
MAST PVT-LAP E-461	9/29	CYLE MOSS	2	E-461	0700-1900	TRINITY SPIKE	
SKG1 PVT-SOFT TRACK E-536	9/26	RYAN KLIMAS	2	E-536	0700-1900	TRINITY SPIKE	
SKG1 PVT-FORESTRY ALTERGOTT	9/29	NATHAN BEAN	2	E-539	0700-1900	TRINITY SPIKE	
SKG1 PVT-SOFT TRACK E-534	9/26	IAN MUNSON	2	E-534	0700-1900	TRINITY SPIKE	
SKG2 PVT-SALOMON LOGGING	9/24	TIM NESMITH	2	E-538	0700-1900	TRINITY SPIKE	
SKG2 PVT-ONLY A MILE	9/22	BEN THOMPSON	2	E-537	0700-1900	TRINITY SPIKE	
SKG2 PVT-UPPER VALLEY	9/28	JAMES KRUCKEBERG	2	E-448	0700-1900	TRINITY SPIKE	
SKD2 PVT-PACIFIC RIDGELINE	9/30	MARK TRIPP	2	E-383	0700-1900	TRINITY SPIKE	
FEL1 PVT-HEADRICK LOGGING	9/23	RICK MASON	1	E-395	0700-1900	TRINITY SPIKE	
FEL2 PVT-SC LOGGING, LLC	10/3	DUSTIN PHILLIPS	2	E-397	0700-1900	TRINITY SPIKE	
GRD PVT-M PETERS	10/2	ALEXANDER GREY	2	E-506	0700-1900	TRINITY SPIKE	

6. Work Assignments:
Scout and prep indirect control line along State Hwy 3 from Scott Mountain Pass to Eagle Creek.

7. Special Instructions:
Mountain Medics AMBU #1 is available to Branch V DIVS.
Continue to collaborate with READs. All natural and cultural resource concerns are flagged with orange/white candy-stripe flagging.

8. Communications

Name	Ch	Function	Rx Freq	Rx Tone	Tx Freq	Tx Tone	Notes
NIFC C31	B.3	COMMAND	173.0250N	T-9 100.0	163.8250N	T-9 100.0	CRAGGY PEAK
NIFC C112	B.6	COMMAND	173.6000N	T-9 100.0	162.0750N	T-9 100.0	BR V, BONANZA KING
NIFC T1	B.7	TACTICAL	168.0500N	T-9 100.0	168.0500N	T-9 100.0	BR X, DIV L, NIGHT KLAMM, CONT.
A/G CMD	13	AIR TO GROUND	169.1500N		169.1500N		AIR TO GROUND COMMAND
A/G TAC	14	AIR TO GROUND	162.8125N		162.8125N		AIR TO GROUND TACTICAL
CALCORD	15	MEDICAL	156.0750N	T6 - 156.7	156.0750N	T6 - 156.7	MEDEVAC COORDINATION
AIRGUARD	16	AIRGUARD	168.6250N		168.6250N	110.9	TOUR ON TRANSMIT ONLY - URGENT AIRCRAFT CONTACT

9. Prepared by: Name: J. Ferguson/H. Meyers/J. Dean (T) RESL *W.H.*

ICS 204 Date/Time: 9/18/2021 2200 Personnel Count: 46

ASSIGNMENT LIST (ICS 204 WF)

CONTROLLED UNCLASSIFIED INFORMATION/BASIC

1. Incident Name: RIVER COMPLEX	2. Operational Period: Date From: 09/19/21 Date To: 09/20/21 Time From: 0700 Time To: 0700	3. Branch V	Division CONTINGENCY SOUTH
--	---	------------------------------	---

Page 2 of 2

4. Operations Personnel: Operations Section Chief: John Goss/Maeve Juarez (T) Branch Director: David Neels Division/Group Supervisor: Brian Tal	Night Ops: Josh Eichamer (T) Branch Safety: Larry Wright Air Attack: Rico Gonzalez/Matt Counts
--	---

** Resources not in Bold are 24 Hour **							
5. Resources Assigned:	LWD	Leader	Personnel	Request #	Hours	Reporting Location	
GRD2 PVT-JOHNSON	9/26	JACK HOTTENDORF	2	E-543	0700-1900	TRINITY SPIKE	
WTS2 PVT-DYNAMITE TACTICAL	9/26	FRED SANCHEZ	1	E-572	0700-1900	TRINITY SPIKE	
WTS2 PVT-ALPINE	9/27	CONRAD BURBANK	1	E-262	0700-1900	TRINITY SPIKE	
FMOD PVT-BROTHERS FIRE → <i>Div N</i>	9/25	ANDY MCKEE	2	O-1150	0700-1900	TRINITY SPIKE	
FMOD PVT-N. ZONE FALLERS O-645	9/29	ALEX KITTRELL	2	O-645	0700-1900	TRINITY SPIKE	
TFLD (T) HEUPEL	9/28	DAVID HEUPEL	1	O-1322	0700-1900	TRINITY SPIKE	
HEQB CZINSKI	9/27	CASEY CZINSKI	1	O-1264	0700-1900	TRINITY SPIKE	
HEQB LUPARELLO	9/23	EDWARD LUPARELLO	1	O-1289	0700-1900	TRINITY SPIKE	
HEQB WYMAN	9/30	KELLEY WYMAN	1	O-1372	0700-1900	TRINITY SPIKE	
HEQB (T) HARNOS	9/29	TRAVIS HARNOS	1	O-1373	0700-1900	TRINITY SPIKE	
HEQB (T) QUICK	9/20	ANDREW QUICK	1	O-1060	0700-1900	TRINITY SPIKE	
REAF DIETZLER	9/27	KARL DIETZLER	1	O-1226	0700-1900	TRINITY SPIKE	
ARCH BROWN	9/29	RYAN BROWN	1	O-1246	0700-1900	TRINITY SPIKE	

6. Work Assignments:
Scout and prep indirect control line along State Hwy 3 from Scott Mountain Pass to Eagle Creek.

7. Special Instructions:
Mountain Medics AMBU #1 is available to Branch V DIVS.
Continue to collaborate with READs. All natural and cultural resource concerns are flagged with orange/white candy-stripe flagging.

8. Communications							
Name	Ch	Function	Rx Freq	Rx Tone	Tx Freq	Tx Tone	Notes
NIFC C31	B.3	COMMAND	173.0250N	T-9 100.0	163.8250N	T-9 100.0	CRAGGY PEAK
NIFC C112	B.6	COMMAND	173.6000N	T-9 100.0	162.0750N	T-9 100.0	BR V, BONANZA KING
NIFC T1	B.7	TACTICAL	168.0500N	T-9 100.0	168.0500N	T-9 100.0	BR X, DIV L, NIGHT K/LU/M, CONT.
A/G CMD	13	AIR TO GROUND	169.1500N		169.1500N		AIR TO GROUND COMMAND
A/G TAC	14	AIR TO GROUND	162.8125N		162.8125N		AIR TO GROUND TACTICAL
CALCORD	15	MEDICAL	156.0750N	T6 - 156.7	156.0750N	T6 - 156.7	MEDEVAC COORDINATION
AIRGUARD	16	AIRGUARD	168.6250N		168.6250N	110.9	STONE ON TRANSMIT ONLY - URGENT AIRCRAFT CONTACT

9. Prepared by: Name:	J. Ferguson/H. Meyers/J. Dean (T)	RESL	<i>W.H.</i>
ICS 204	Date/Time: 9/18/2021	2200	Personnel Count: 16

ASSIGNMENT LIST (ICS 204 WF)

CONTROLLED UNCLASSIFIED INFORMATION/BASIC

1. Incident Name: <p style="text-align: center;">RIVER COMPLEX</p>	2. Operational Period: Date From: 09/19/21 Date To: 09/20/21 Time From: 0700 Time To: 0700	3. Branch Division <p style="text-align: center;">X Cronan</p>
---	---	--

Page 1 of 1

4. Operations Personnel:

Operations Section Chief: John Goss/Maeve Juarez (T)	Night Ops: Josh Eichamer (T)
Branch Director: Matt Conklin	Branch Safety: Larry Wright
Division/Group Supervisor:	Air Attack: Rico Gonzalez/Matt Counts

5. Resources Assigned: **** Resources not in Bold are 24 Hour ****

Resource Identifier	LWD	Leader	Personnel	Request #	Hours	Reporting Location
ENG6 PVT-ROCKY POINT-324	9/23	SETH COLBRY	3	E-596	0700-1900	ETNA ICP

6. Work Assignments:
Patrol and mop up along Sawyers Bar Road. Recover all accountable property off of the fire. Coordinate with Ground Support for back haul.

7. Special Instructions:
Etna Ambulance is available to all DIVS in Branch X.

8. Communications

Name	Ch	Function	Rx Freq	Rx Tone	Tx Freq	Tx Tone	Notes
NIFC C1	3	COMMAND	170.9750N	T-9 100.0	168.7000N	T-9 100.0	EDDY GULCH LOOKOUT
NIFC C85	6	COMMAND	173.1375N	T-9 100.0	162.5875N	T-9 100.0	BLUE RIDGE LOOKOUT
NIFC T7	12	TACTICAL	168.2500N	T-9 100.0	168.2500N	T-9 100.0	
A/G CMD	13	AIR TO GROUND	169.1500N		169.1500N		AIR TO GROUND COMMAND
A/G TAC	14	AIR TO GROUND	162.8125N		162.8125N		AIR TO GROUND TACTICAL
CALCORD	15	MEDICAL	156.0750N	T6 - 156.7	156.0750N	T6 - 156.7	MEDEVAC COORDINATION
AIRGUARD	16	AIRGUARD	168.6250N		168.6250N	110.9	
							TONE ON TRANSMIT ONLY - URGENT AIRCRAFT CONTACT

9. Prepared by: Name: J. Ferguson/H. Meyers/J. Dean (T) RESL *W.H.*

ICS 204 Date/Time: 9/18/2021 2200 Personnel Count: 3

ASSIGNMENT LIST (ICS 204 WF)

CONTROLLED UNCLASSIFIED INFORMATION/BASIC

1. Incident Name:	2. Operational Period:	3. Branch
RIVER COMPLEX	Date From: 09/19/21 Date To: 09/20/21 Time From: 0700 Time To: 0700	X
		Division U/K/L

4. Operations Personnel:	
Operations Section Chief: John Goss/Maeve Juarez (T) Branch Director: Matt Conklin Division/Group Supervisor: Dave Valencia/Mickey Fearn (T)	Night Ops: Josh Elchamer (T) Branch Safety: Larry Wright Air Attack: Rico Gonzalez/Matt Counts

5. Resources Assigned:		** Resources not in Bold are 24 Hour **					
Resource Identifier	LWD	Leader	Personnel	Request #	Hours	Reporting Location	
HC2 PVT-TORRES CREW 14	9/25	ISMAEL LOPEZ	20	C-196	0700-1900	ETNA ICP	
ENG3 KNF-46 → R#R	10/3	NICHOLAS KNIGHT	5	E-10	0700-1900	ETNA ICP	
ENG3 NV-CLCX-LYON-B35	9/25	JOE SANTOS	3	E-598	0700-1900	ETNA ICP	
ENG6 PVT-NATIONAL WILDLAND E-171	10/1	BRIAN ENNIS	3	E-170	0700-1900	ETNA ICP	
ENG6 PVT-LITE EM UP E-553	9/19 9/20	RAY BESSE	3	E-553	0700-1900	ETNA ICP	
ENG6 PVT-LITE EM UP E-636	9/25	BOB VIGER	3	E-636	0700-1900	ETNA ICP	
ENG6 PVT-R&R FIELD SERVICES	9/29	MICHAEL COX	3	E-687	0700-1900	ETNA ICP	
MAST PVT-LAP E-319	9/20	KYLE PARKER	2	E-319	0700-1900	ETNA ICP	
CHIP-PVT-BIG BARK CHIPPERS	9/22	KYLE BRITAIN	3	E-573	0700-1900	ETNA ICP	
EMPF HUISMANN	9/26	AARON HUISMAN	1	O-1223	0700-1900	ETNA ICP	
REMS FRESNO FIRE	9/22	JASON MOORE	4	O-1121	0700-1900	ETNA ICP	
HEQB (T) JAMIESON REAF	10/7	TRISTAN JAMIESON	1	O-798	0700-1900	ETNA ICP	
REAF LONERGAN	9/20	BRANDON FERRIS	1	O-752	0700-1900	ETNA ICP	
BAES MARANO (T)	9/26	SAMUEL MARANO	1	O-1074	0700-1900	ETNA ICP	

6. Work Assignments:
Mop up and patrol along Cecilville Road and from the southern 17 Road and Cecilville Road junction to the L/M DIV break, at Fox Creek, along the 7 Road to keep fire within current containment lines. Identify opportunities for rehab in areas of full containment.

7. Special Instructions:
Backhaul all accountable property not critical to meet control objectives.
READS will check in and out and with DIVS. Continue to collaborate with READs. All natural and cultural resource concerns are flagged with orange/white candy-stripe flagging.
24 hour resources are assigned to Div L during the day and Div Night K/L/M/U during the night.
Etna Ambulance is available to all Divisions in Branch X.

8. Communications

Name	Ch	Function	Rx Freq	Rx Tone	Tx Freq	Tx Tone	Notes
NIFC C1	3	COMMAND	170.9750N	T-9 100.0	168.7000N	T-9 100.0	EDDY GULCH LOOKOUT
NIFC C86	7	COMMAND	166.1250N	T-9 100.0	162.1750N	T-9 100.0	BRANCH V, PACKERS PEAK
R5 T4	B.10	TACTICAL	166.5500N	T-9 100.0	166.5500N	T-9 100.0	BR X, DIV K/U, BR V, DIV N, NIGHT DIV N/Q/R
A/G CMD	13	AIR TO GROUND	169.1500N		169.1500N		AIR TO GROUND COMMAND
A/G TAC	14	AIR TO GROUND	162.8125N		162.8125N		AIR TO GROUND TACTICAL
CALCORD	15	MEDICAL	156.0750N	T6 - 156.7	156.0750N	T6 - 156.7	MEDEVAC COORDINATION
AIRGUARD	16	AIRGUARD	168.6250N		168.6250N	110.9	TONE ON TRANSMIT ONLY - URGENT AIRCRAFT CONTACT

9. Prepared by: Name: J. Ferguson/H. Meyers/J. Dean (T) RESL **W.H.**

ICS 204 Date/Time: 9/18/2021 2200 Personnel Count: 53

ASSIGNMENT LIST (ICS 204 WF)

CONTROLLED UNCLASSIFIED INFORMATION/BASIC

1. Incident Name: RIVER COMPLEX	2. Operational Period: Date From: 09/19/21 Date To: 09/20/21 Time From: 0700 Time To: 0700	3. Branch X	Division M
--	---	------------------------------	-----------------------------

4. Operations Personnel:		Page 1 of 3	Mike
Operations Section Chief: John Goss/Maeve Juarez (T)		Night Ops: Josh Elchamer (T)	
Branch Director: Matt Conklin		Branch Safety: Larry Wright	
Division/Group Supervisor: Rob Winkler/Scott Brewer (T)		Air Attack: Rico Gonzalez/Matt Counts	

5. Resources Assigned:		** Resources not in Bold are 24 Hour **					
Resource Identifier	LWD	Leader	Personnel	Request #	Hours	Reporting Location	
HC1 S/T-SKU-9261-G	9/22	CLINTON SINGLETON	31	C-189	0700-0700	ETNA ICP	
HC1 LPF-ARROYO GRANDE-IHC	9/21	PHIL HERNANDEZ	20	C-229	0700-1900	ETNA ICP	
HC1 KNF-KLAMATH IHC-14	9/19	ANDREW ZINK	19	C-168	0700-1900	ETNA ICP	
HC1 ANF-BEAR DIVIDE IHC	9/20	JOSH THOMAS	19	C-180	0700-1900	ETNA ICP	
HC2IA PVT-FIRESTORM NCC19	9/29	GRAHAM LOWE	20	C-51	0700-1900	ETNA ICP	
HC2-PVT-CABRERA C-212	9/29	BENITO CABRERA	20	C-212	0700-1900	ETNA ICP	
WFM2 ALMANOR CREW 1	10/1	COREY BUCKLEY	7	O-1403	0700-1900	ETNA ICP	
WFM2 LNF-EAGLE LAKE	9/30	BEN WHEELER	7	O-1329	0700-1900	ETNA ICP	
ENG3 MDF-365	9/21	CHAD WARD	4	E-575	0700-1900	ETNA ICP	
ENG3 LPF-331	9/22	CHASEN URBAN	5	E-600	0700-1900	ETNA ICP	
ENG3 PNF-330	9/21	DAMON LONG	5	E-580	0700-1900	ETNA ICP	
ENG3 LPF-374	9/22	JAIMECOPE	5	E-594	0700-1900	ETNA ICP	
ENG3 NV-HTF-353	9/23	JUSTIN BEDARD	5	E-597	0700-1900	ETNA ICP	
ENG3 CDD-7372	9/23	CHAD MILSON	4	E-593	0700-1900	ETNA ICP	
ENG3 LST-3118	9/26	JAIME CARDENAS	3	E-556	0700-1900	ETNA ICP	
ENG3 LST-3112 Demob	9/26	STEVEN PAPPAS	3	E-557	0700-1900	ETNA ICP	
ENG3 MSH-4615	9/21	MARQUIS SMITH	3	E-605	0700-0700	ETNA ICP	
ENG3 SVF-1518	9/27	STEVE POLING	3	E-606	0700-0700	ETNA ICP	
ENG4 ID-IFD-3442 Demob	9/19	TREVOR DeGARMO	5	E-532	0700-1900	ETNA ICP	
ENG4 PVT-IDAHO TRAILBLAZERS E-585	9/22	JOSEPH MEYER	3	E-585	0700-1900	ETNA ICP	
ENG5 PVT-J3 CONTRACTING E-98	9/26	RYAN MATHWICH	3	E-98	0700-1900	ETNA ICP	
ENG6 PVT-MONTROSE HELL FIGHTERS	9/20	BRENT STANLEY	3	E-104	0700-1900	ETNA ICP	

6. Work Assignments:
Hold and secure existing control lines from Fox Creek through Sugar Hill/McKeen Divide toward Mill Creek Trailhead. Improve current trail prism to utilize as control line. Provide for infrastructure protection in the area of Unalayee. Scout indirect containment control lines towards DP 35.

7. Special Instructions:
Identify and collect equipment for backhaul.
READS will check in and out and with DIVS. Continue to collaborate with READs. All natural and cultural resource concerns are flagged with orange/white candy-stripe flagging.
Etna Ambulance is available to all Divisions in Branch X.

8. Communications

Name	Ch	Function	Rx Freq	Rx Tone	Tx Freq	Tx Tone	Notes
NIFC C31	5	COMMAND	173.0250N	T-9 100.0	163.8250N	T-9 100.0	CRAGGY PEAK
NIFC C86	7	COMMAND	166.1250N	T-9 100.0	162.1750N	T-9 100.0	BRANCH V, PACKERS PEAK
NIFC T5	B.9	TACTICAL	166.7250N	T-9 100.0	166.7250N	T-9 100.0	BR X, DIV M
A/G CMD	13	AIR TO GROUND	169.1500N		169.1500N		AIR TO GROUND COMMAND
A/G TAC	14	AIR TO GROUND	162.8125N		162.8125N		AIR TO GROUND TACTICAL
CALCORD	15	MEDICAL	156.0750N	T6 - 156.7	156.0750N	T6 - 156.7	MEDEVAC COORDINATION
AIRGUARD	16	AIRGUARD	168.6250N		168.6250N	110.9	TONE ON TRANSMIT ONLY - URGENT AIRCRAFT CONTACT

9. Prepared by: Name: J. Ferguson/H. Meyers/J. Dean (T) RESL *W.H.*

ICS 204 Date/Time: 9/18/2021 2200 Personnel Count: 197

ASSIGNMENT LIST (ICS 204 WF)

CONTROLLED UNCLASSIFIED INFORMATION/BASIC

1. Incident Name: RIVER COMPLEX	2. Operational Period: Date From: 09/19/21 Date To: 09/20/21 Time From: 0700 Time To: 0700	3. Branch Division X M Page 2 of 3 Mike
--	---	--

4. Operations Personnel: Operations Section Chief: John Goss/Maeve Juarez (T) Branch Director: Matt Conklin Division/Group Supervisor: Rob Winkler/Scott Brewer (T)	Night Ops: Josh Eichamer (T) Branch Safety: Larry Wright Air Attack: Rico Gonzalez/Matt Counts
--	---

5. Resources Assigned:	** Resources not in Bold are 24 Hour **						
Resource Identifier	LWD	Leader	Personnel	Request #	Hours	Reporting Location	
ENG6 PVT-T H LOGGING	9/21	WILBUR NAGEL	3	E-524	0700-1900	ETNA ICP	
ENG6 CA-CND-6646	9/23	KEVIN EHRET	3	E-595	0700-1900	ETNA ICP	
DOZ2 PVT-KIT CONTRACTING → Demob	9/23	SHELTON BOLLINGER	2	E-332	0700-1900	ETNA ICP	
DOZ2 PVT-PONYTAIL EXPRESS	9/25	CLOVIS HOOPER	2	E-386	0700-1900	ETNA ICP	
DOZ2-PVT-JOHNSON CONTRACT	9/30	BRANDON FERRIS	2	E-391	0700-1901	ETNA ICP	
DOZ3 PVT-MILE HIGH	9/26	TORIN THOMPSON	2	E-92	0700-1900	ETNA ICP	
MAST PVT-LAP 11882	9/28	TROY SMITH	2	E-215	0700-1900	ETNA ICP	
MAST PVT-MILLER EXCAVATING	9/25	KALAH MILLER	2	E-216	0700-1900	ETNA ICP	
MAST2 PVT-PETERS ENTERPRISES	9/20	ETHAN PETER	2	E-243	0700-1900	ETNA ICP	
MAST PVT-DAVIS CORP. E-459	9/27	RANDY BLANSETT	2	E-459	0700-1900	ETNA ICP	
SKG2 PVT-ALVORD FIRE → Demob	9/24	JOHN MOYER	2	E-535	0700-1900	ETNA ICP	
SKG3 PVT-MCKELLAR TREE SVC. → Demob	10/1	DOUG MCKELLAR	1	E-566	0700-1900	ETNA ICP	
CHIP-PVT-NORTH ZONE FALLERS	9/28	GAGE INGRAM	3	E-497	0700-1900	ETNA ICP	
WTS2 PVT-KIT CONTRACTING	9/21	DALEN WHITE	1	E-213	0700-1900	ETNA ICP	
WTS2 PVT-NOXON	9/30	LAWRENCE RHOADS	1	E-214	0700-1900	ETNA ICP	
WTS2 PVT-A-1 WATER	9/23	MATT THOMAS	1	E-240	0700-1900	ETNA ICP	
WTS2 PVT-HOLT	9/30	ALBERT ANGULO	1	E-349	0700-1900	ETNA ICP	
WTS2 PVT-RICHARDSON TREE CARE	9/29	DAVID BETTS	1	E-353	0700-1900	ETNA ICP	
SUPER PUMP S-56	9/19	GAROLD CARVER	1	S-56	0700-1900	ETNA ICP	
FMOD PVT-N. ZONE FALLERS O-1149	9/25	MIKE LEE	2	O-1149	0700-1900	ETNA ICP	
FMOD PVT-MOEN TIMBER	10/1	DARWIN SAXON	2	O-116	0700-1900	ETNA ICP	
DIVS STIRTON	9/24	BILL STIRTON	1	O-1245	0700-1900	ETNA ICP	

6. Work Assignments:
Hold and secure existing control lines from Fox Creek through Sugar Hill/McKeen Divide toward Mill Creek Trailhead. Improve current trail prism to utilize as control line. Provide for infrastructure protection in the area of Unalayee. Scout indirect containment control lines towards DP 35.

7. Special Instructions:
Identify and collect equipment for backhaul.
READS will check in and out and with DIVS. Continue to collaborate with READs. All natural and cultural resource concerns are flagged with orange/white candy-stripe flagging.
Etna Ambulance is available to all DIVS in Branch X.

8. Communications

Name	Ch	Function	Rx Freq	Rx Tone	Tx Freq	Tx Tone	Notes
NIFC C31	5	COMMAND	173.0250N	T-9 100.0	163.8250N	T-9 100.0	CRAGGY PEAK
NIFC C86	7	COMMAND	166.1250N	T-9 100.0	162.1750N	T-9 100.0	BRANCH V, PACKERS PEAK
NIFC T5	B.9	TACTICAL	166.7250N	T-9 100.0	166.7250N	T-9 100.0	BR X, DIV M
A/G CMD	13	AIR TO GROUND	169.1500N		169.1500N		AIR TO GROUND COMMAND
A/G TAC	14	AIR TO GROUND	162.8125N		162.8125N		AIR TO GROUND TACTICAL
CALCORD	15	MEDICAL	156.0750N	T6 - 156.7	156.0750N	T6 - 156.7	MEDEVAC COORDINATION
AIRGUARD	16	AIRGUARD	168.6250N		168.6250N	110.9	PHONE ON TRANSMIT ONLY - URGENT AIRCRAFT CONTACT

9. Prepared by: Name: J. Ferguson/H. Meyers/J. Dean (T) RESL *W.N.*
ICS 204 Date/Time: 9/18/2021 2200 Personnel Count: 5

ASSIGNMENT LIST (ICS 204 WF)

CONTROLLED UNCLASSIFIED INFORMATION/BASIC

1. Incident Name: RIVER COMPLEX	2. Operational Period: Date From: 09/19/21 Date To: 09/20/21 Time From: 0700 Time To: 0700	3. Branch Division X M Page 3 of 3 Mike
--	---	--

4. Operations Personnel: Operations Section Chief: John Goss/Maeve Juarez (T) Branch Director: Matt Conklin Division/Group Supervisor: Rob Winkler/Scott Brewer (T)		Night Ops: Josh Elchamer (T) Branch Safety: Larry Wright Air Attack: Rico Gonzalez/Matt Counts
--	--	---

5. Resources Assigned:	** Resources not in Bold are 24 Hour **					
Resource Identifier	LWD	Leader	Personnel	Request #	Hours	Reporting Location
TFLD JANES	9/30	BRIAN JANES	1	O-1374	0700-1900	ETNA ICP
TFLD (T) OLANDER	9/30	CALEB OLANDER	1	O-1375	0700-1900	ETNA ICP
HEQB FENWICK	9/23	ADELE FENWICK	1	O-976	0700-1900	ETNA ICP
HEQB(T) COMMARTO	9/26	SAM COMMARTO	1	O-975	0700-1900	ETNA ICP
EMPF INMAN	9/22	CHRIS INMAN	1	O-918	0700-1900	ETNA ICP
EMTF JOYCE	9/19	CARL JOYCE	1	O-982	0700-1900	ETNA ICP
AZ-FLG MEDICAL TEAM 1	10/1	SETH GREGAR	1	O-1352	0700-1900	ETNA ICP
REAF BLALOCK	9/25	JON BLALOCK	1	O-1069	0700-1900	ETNA ICP
ARCH DAVIS	9/20	ISAAC DAVIS	1	O-958	0700-1900	ETNA ICP
<i>EIK Mtn HC</i>						ETNA ICP

6. Work Assignments:
Hold and secure existing control lines from Fox Creek through Sugar Hill/McKeen Divide toward Mill Creek Trailhead. Improve current trail prism to utilize as control line. Provide for infrastructure protection in the area of Unalaye. Scout indirect containment control lines towards DP 35.

7. Special Instructions:
Identify and collect equipment for backhaul.
READS will check in and out and with DIVS. Continue to collaborate with READs. All natural and cultural resource concerns are flagged with orange/white candy-stripe flagging.
Etna Ambulance is available to all DIVS in Branch X. SOF2 Franco is available to Divisions L, M, and N.

8. Communications

Name	Ch	Function	Rx Freq	Rx Tone	Tx Freq	Tx Tone	Notes
NIFC C31	5	COMMAND	173.0250N	T-9 100.0	163.8250N	T-9 100.0	CRAGGY PEAK
NIFC C86	7	COMMAND	166.1250N	T-9 100.0	162.1750N	T-9 100.0	BRANCH V, PACKERS PEAK
NIFC T5	B.9	TACTICAL	166.7250N	T-9 100.0	166.7250N	T-9 100.0	BR X, DIV M
A/G CMD	13	AIR TO GROUND	169.1500N		169.1500N		AIR TO GROUND COMMAND
A/G TAC	14	AIR TO GROUND	162.8125N		162.8125N		AIR TO GROUND TACTICAL
CALCORD	15	MEDICAL	156.0750N	T6 - 156.7	156.0750N	T6 - 156.7	MEDEVAC COORDINATION
AIRGUARD	16	AIRGUARD	168.6250N		168.6250N	110.9	TONE ON TRANSMIT ONLY - URGENT AIRCRAFT CONTACT

9. Prepared by: Name: J. Ferguson/H. Meyers/J. Dean (T) RESL *W.H.*

ASSIGNMENT LIST (ICS 204 WF)

CONTROLLED UNCLASSIFIED INFORMATION/BASIC

1. Incident Name: RIVER COMPLEX	2. Operational Period: Date From: 09/19/21 Date To: 09/20/21 Time From: 0700 Time To: 0700	3. Branch Division NIGHT N/Q/R
--	---	---

Page 1 of 1

4. Operations Personnel: Operations Section Chief: John Goss/Maeve Juarez (T) Branch Director: <i>demob</i> Division/Group Supervisor: Brian Fabbri/Scott Chapman (T) / Bill Robinson		Night Ops: Josh Elchamer (T) Branch Safety: SOF2 Mike Smith Air Attack: Rico Gonzalez/Matt Counts
---	--	--

5. Resources Assigned:		** Resources not in Bold are 24 Hour **					
Resource Identifier	LWD	Leader	Personnel	Request #	Hours	Reporting Location	
* HC21 MNF-ELK MOUNTAIN → Day Div N / today	10/1	REYMUNDO REYES	21	C-216	1900-0700	TRINITY SPIKE	
* SMOD MDF-MODOC CREW 1 → Day N tomorrow	9/30	WILLIE ALMAND	10	O-1385	1900-0700	TRINITY SPIKE	
* ENG3 SWR-8430 → Demob	9/28	JOSE PALACIOS	4	E-720	1900-0700	TRINITY SPIKE	
* ENG3 CO-ELK-435 → Demob	9/30	PAUL SCOTT	3	E-703	1900-0700	TRINITY SPIKE	
* ENG3 AZ-ORC-692 → Day Div N	10/2	TYLER MCGOVERN	4	E-732	1900-0700	TRINITY SPIKE	
ENG3 PVT-SPENCE E-684	9/21	TYLER MUEGERL	3	E-684	1900-0700	TRINITY SPIKE	
ENG4 WY-WAX-44	9/22	TROY NELSEN	3	E-282	1900-0700	TRINITY SPIKE	
ENG4 CO-FTC-413	9/29	NICK MANNING	3	E-701	1900-0700	TRINITY SPIKE	
ENG4 PVT-TORCH F&S E-413	9/24	STEPHEN TOLMAN	3	E-413	1900-0700	TRINITY SPIKE	
* ENG4 PVT-GREAT BASIN E-685				E-685	1900-0700	TRINITY SPIKE	
* ENG5 PVT-GREAT BASIN E-686	9/29	HAL STOKER	3	E-686	1900-0700	TRINITY SPIKE	
* ENG6 PVT-FIREANT E-424	9/22	ANDREA MCKENNA	3	E-424	1900-0700	TRINITY SPIKE	
ENG6 UT-SWS-B56	9/19	MIKE JOHNSON	3	E-527	1900-0700	TRINITY SPIKE	
* ENG6 PVT-CAHOON WILDLAND FIRE	10/1	ROBERT SNOW	3	E-728	1900-0700	TRINITY SPIKE	
* ENG6 PVT-GRAYBACK E-722	9/30	DON SCRIVEN	3	E-722	1900-0700	TRINITY SPIKE	
* SKDS PVT-WILDLAND	9/26	LARRY CHAIN	2	E-503	1900-0700	TRINITY SPIKE	
* SKDS PVT-SOFT TRACK ATTACK	9/26	JEREMEY GUTHRIE	2	E-504	1900-0700	TRINITY SPIKE	
* WTT1 5J WATER	9/25	CORY CLARK	2	E-308	1900-0700	TRINITY SPIKE	
EMPF ARELLANO	9/22	JUSTIN ARELLANO	1	O-1129	1900-0700	TRINITY SPIKE	
EMPF SPENCER	10/1	CHAD SPENCER	1	O-1386	1900-0700	TRINITY SPIKE	

6. Work Assignments:
Continue the construction of direct and indirect lines North and south of Coffee Creek road to support the strategy. Provide structure protection and mop up around any structures. Defend the communities of Coffee Creek and Trinity Center.

** These Resources will short shift and roll to days.*

7. Special Instructions:
Identify and collect equipment for backhaul.
All natural and cultural resource concerns are flagged with orange/white candy-stripe flagging.
24 hour resources are assigned to Div Q during the day and N/Q/R during the night.

8. Communications							
Name	Ch	Function	Rx Freq	Rx Tone	Tx Freq	Tx Tone	Notes
NIFC C86	B.4	COMMAND	166.1250N	T-9 100.0	162.1750N	T-9 100.0	BRANCH V, PACKERS PEAK
NIFC C112	B.6	COMMAND	173.6000N	T-9 100.0	162.0750N	T-9 100.0	BR V, BONANZA KING
R5 T4	B.10	TACTICAL	166.5500N	T-9 100.0	166.5500N	T-9 100.0	BR X, DIV K/U, BR V, DIV N, NIGHT DIV N/Q/R
A/G CMD	13	AIR TO GROUND	169.1500N		169.1500N		AIR TO GROUND COMMAND
A/G TAC	14	AIR TO GROUND	162.8125N		162.8125N		AIR TO GROUND TACTICAL
CALCORD	15	MEDICAL	156.0750N	T6 - 156.7	156.0750N	T6 - 156.7	MEDEVAC COORDINATION
AIRGUARD	16	AIRGUARD	168.6250N		168.6250N	110.9	TONE ON TRANSMIT ONLY - URGENT AIRCRAFT CONTACT

9. Prepared by: Name: J. Ferguson/H. Meyers/J. Dean (T) RESL	<i>L.H.</i>
ICS 204	Personnel Count: 77

ASSIGNMENT LIST (ICS 204 WF)

CONTROLLED UNCLASSIFIED INFORMATION/BASIC

1. Incident Name: RIVER COMPLEX	2. Operational Period: Date From: 09/19/21 Date To: 09/20/21 Time From: 0700 Time To: 0700	3. Branch Division NIGHT U/K/L/M
--	---	---

Page 1 of 1

4. Operations Personnel:	
Operations Section Chief: John Goss/Maeve Juarez (T) Branch Director: Division/Group Supervisor: Bill Robinson/Anna Wright (T)	Night Ops: Josh Eichamer (T) Branch Safety: SOF2 Michael Smith Air Attack: Rico Gonzalez/Matt Counts

5. Resources Assigned:		** Resources not in Bold are 24 Hour **					
Resource Identifier	LWD	Leader	Personnel	Request #	Hours	Reporting Location	
HC1 S/T-SKU-9261-G	9/22	CLINTON SINGLETON	31	C-189	0700-0700	ETNA ICP	
HC2-PVT-CALDERON-CFS#1	9/27	ARTURO CALDERON	20	C-210	1900-0700	ETNA ICP	
* HC2-PVT-CABRERA C-213	9/29	LEONARDO CABRERA	20	C-213	1900-0700	ETNA ICP	
* ENG6 S/T-OES-2860-F → Demob	9/19	PATRICK D'ARCY	17	E-719	1900-0700	ETNA ICP	
ENG3 CO-CDFS-432	9/25	PHILIP STEVENS	4	E-639	1900-0700	ETNA ICP	
* ENG3 TNF-361 → Demob	9/26	KYLE OKERMANN	5	E-662	1900-0700	ETNA ICP	
ENG3 NM-N6S-317	9/26	KARINA HERNANDEZ	4	E-667	1900-0700	ETNA ICP	
* ENG3 KNF-357	9/27	BOB HANLEY	5	E-681	1900-0700	ETNA ICP	
ENG3 UT-NWS-1668	9/19	KYLE THATCHER	6	E-514	1900-0700	ETNA ICP	
ENG3 MSH-4615	9/21	MARQUIS SMITH	3	E-605	0700-0700	ETNA ICP	
ENG3 SVF-1518	9/27	STEVE POLING	3	E-606	0700-0700	ETNA ICP	
ENG4 UT-UWF-461	9/19	DEREK HILL	5	E-529	1900-0700	ETNA ICP	
* ENG6-CO-CDFS-E2832	9/29	TYER WURZER	4	E-700	1900-0700	ETNA ICP	
ENG6 PVT-ROCKY POINT-117	10/1	DANNY ROGERS	3	E-289	1900-0700	ETNA ICP	
* ENG6 PVT-THOMAS HANKS	9/25	TOM HANKS	3	E-423	1900-0700	ETNA ICP	
* ENG6 PVT-BLAZE RUNNERS E-414	9/25	ADAN ESTRADA	3	E-414	1900-0700	ETNA ICP	
ENG6 PVT-OUTBACK E-420	9/25	RICK MANCHESTER	3	E-420	1900-0700	ETNA ICP	
* ENG6 PVT-BRIAN CAHOON	9/26	WADE HENDRICKSON	3	E-551	1900-0700	ETNA ICP	
* WTS2 PVT-ALLIED	10/2	CHADES LIEDTKE	2	E-22	1900-0700	ETNA ICP	
EMTF SHARKEY	9/26	LIAM SHARKEY	1	O-1134	1900-0700	ETNA ICP	
REMS REMOTE ACCESS MEDICAL	9/30	ADAM MACK	4	O-586	1900-0700	ETNA ICP	

6. Work Assignments:
Patrol and monitor the Callahan/Cecilville Road to defend the road and keep fire to the south. Advance firing operations as directed and watch out for spot fires to keep fire away from values at risk in Callahan and Hwy 3 corridor and protect private property and land to the north. Construct direct and indirect line along fire edge where hazards associated with night operations can be mitigated to protect values at risk.

* These resources will short shift and roll to days

7. Special Instructions:
Identify and collect equipment for backhaul. All natural and cultural resource concerns are flagged with orange/white candy-stripe flagging. Mountain Medics AMB#2 is available to DIVS U/K/L/M.

8. Communications							
Name	Ch	Function	Rx Freq	Rx Tone	Tx Freq	Tx Tone	Notes
NIFC C1	3	COMMAND	170.9750N	T-9 100.0	168.7000N	T-9 100.0	EDDY GULCH LOOKOUT
NIFC C86	7	COMMAND	166.1250N	T-9 100.0	162.1750N	T-9 100.0	BRANCH V, PACKERS PEAK
NIFC T5	B.9	TACTICAL	166.7250N	T-9 100.0	166.7250N	T-9 100.0	BR X, DIV M
A/G CMD	13	AIR TO GROUND	169.1500N		169.1500N		AIR TO GROUND COMMAND
A/G TAC	14	AIR TO GROUND	162.8125N		162.8125N		AIR TO GROUND TACTICAL
CALCORD	15	MEDICAL	156.0750N	T6 - 156.7	156.0750N	T6 - 156.7	MEDEVAC COORDINATION
AIRGUARD	16	AIRGUARD	168.6250N		168.6250N	110.9	TOPE ON TRANSMIT ONLY - URGENT AIRCRAFT CONTACT

9. Prepared by: Name:	J. Ferguson/H. Meyers/J. Dean (T)	RESL	<i>W.H.</i>	Personnel Count: 149
ICS 204	Date/Time: 9/18/2021	2200		

INCIDENT RADIO COMMUNICATIONS PLAN		Incident Name: River Complex CONTROLLED UNCLASSIFIED INFORMATION/BASIC				Date/Time Prepared 9/18/21 1700	Operational Period Date/Time 9/19/21 0700 to 9/20/21 0700		
Ch #	Function	Channel Name/Trunked Radio System Talkgroup	Assignment	RX Freq	RX Toner/NAC	TX Freq	Tx Toner/NAC	Mode A, D or M	Remarks
1	COMMAND	SALMON	IA USE	172.4000		164.1250	T-6 156.7	A	KNF
2	COMMAND	RIVER	IA USE	172.2500		165.0750	T-7 167.9	A	KNF
3	COMMAND	NIFC C-1	ALL RESOURCES	170.9750	T-9 100.0	168.7000	T-9 100.0	A	EDDY GULCH L/O
4	COMMAND	NIFC C-11	Out of Service	170.6675	T-9 100.0	166.5750	T-9 100.0	A	Out of Service
5	COMMAND	NIFC C-31	ALL RESOURCES	173.0250	T-9 100.0	163.8250	T-9 100.0	A	Craggy Peak
6	COMMAND	NIFC C-85	CRONAN	173.1375	T-9 100.0	162.5675	T-9 100.0	A	BLUE RIDGE L/O
7	COMMAND	NIFC C-86	BRANCH V	166.1250	T-9 100.0	162.1750	T-9 100.0	A	PACKERS PEAK
8	TACTICAL	NIFC T1	CONTINGENCY	168.0500	T-9 100.0	168.0500	T-9 100.0	A	
9	TACTICAL	NIFC T3	DIV. S	168.6000	T-9 100.0	168.6000	T-9 100.0	A	
10	TACTICAL	NIFC T5	DIV. M	166.7250	T-9 100.0	166.7250	T-9 100.0	A	
11	TACTICAL	NIFC T6		166.775	T-9 100.0	166.775	T-9 100.0	A	
12	TACTICAL	NIFC T7	CRONAN	168.2500	T-9 100.0	168.2500	T-9 100.0	A	
13	AIR TO GROUND	A/G CMD	DIV SUP & ABOVE	169.1500		169.1500		A	DIV SUP & ABOVE
14	AIR TO GROUND	A/G TAC	ALL RESOURCES	162.8125		162.8125		A	
15	AIR TO GROUND	CALCORD	ALL RESOURCES	156.0750	T-6 156.7	156.0750	T-6 156.7	A	
16	AIR GUARD	AIR GUARD	ALL RESOURCES	166.6250		166.6250	T-1 110.9	A	
CONTROLLED UNCLASSIFIED INFORMATION/BASIC									
Prepared By (Communications Unit)									
Kevin Harper, COML 661-330-0209 <i>K-Hey COML</i>									
Klamath National Forest									
24 HOUR RIVER COMMUNICATIONS PHONE LINE: 530-467-1509									

INCIDENT RADIO COMMUNICATIONS PLAN		Incident Name: River Complex CONTROLLED UNCLASSIFIED INFORMATION//BASIC				Date/Time Prepared 9/18/21 1700	Operational Period Date/Time 9/19/21 0700 to 9/20/21 0700		
Ch #	Function	Channel Name/Trunked Radio System Talkgroup	Assignment	RX Freq	RX Tone/NAC	TX Freq	Tx Toner/NAC	Mode A, D or M	Remarks
1	COMMAND	NIFC C-1	ALL RESOURCES	170.9750	T-9 100.0	168.7000	T-9 100.0	A	EDDY GULCH L/O
2	COMMAND	NIFC C-11	Out of Service	170.6675	T-9 100.0	166.5750	T-9 100.0	A	Out of Service
3	COMMAND	NIFC C-31	ALL RESOURCES	173.0250	T-9 100.0	163.8250	T-9 100.0	A	Craggy Peak
4	COMMAND	NIFC C-86	ALL RESOURCES	166.1250	T-9 100.0	162.1750	T-9 100.0	A	Packers Peak
5	COMMAND	NIFC C-97	BRANCH V	168.1375	T-9 100.0	165.1500	T-9 100.0	A	ROZ POINT
6	COMMAND	NIFC C-112	BRANCH V	173.6000	T-9 100.0	162.0750	T-9 100.0	A	BONANZA KING
7	TACTICAL	NIFC T1	CONTINGENCY	168.0500	T-9 100.0	168.0500	T-9 100.0	A	CONTINGENCY
8	TACTICAL	NIFC T3	DIVISION S	168.6000	T-9 100.0	168.6000	T-9 100.0	A	
9	TACTICAL	NIFC T5	DIVISION M	166.7250	T-9 100.0	166.7250	T-9 100.0	A	NIGHT U/K/L/M
10	TACTICAL	R5 T-4	DIV U/L/K, DIV N,	166.5500	T-9 100.0	166.5500		A	NIGHT N/Q/R
11	TACTICAL	R5 T-5	DIVISION Q	167.1125	T-9 100.0	167.1125		A	
12	TACTICAL	R5 T-6	DIVISION R	168.2375	T-9 100.0	168.2375		A	
13	AIR TO GROUND	A/G CMD	DIV SUP & ABOVE	169.1500		169.1500		A	DIV SUP & ABOVE
14	AIR TO GROUND	A/G TAC	ALL RESOURCES	162.8125		162.8125		A	
15	AIR TO GROUND	CALCORD	ALL RESOURCES	156.0750	T-6 156.7	156.0750	T-6 156.7	A	
16	AIR GUARD	AIR GUARD	ALL RESOURCES	166.6250		166.6250	T-1 110.9	A	EMERGENCY TO AIRCRAFT
CONTROLLED UNCLASSIFIED INFORMATION//BASIC									
Prepared By (Communications Unit)									
Kevin Harper, COML 661-330-0209 <i>K-Harper COML</i>									
Klamath National Forest 24 HOUR RIVER COMMUNICATIONS PHONE LINE: 530-467-1509									

MEDICAL PLAN (206)	1. INCIDENT NAME: River Complex	2. DATE PREPARED: September 18, 2021	3. TIME PREPARED: 1700	4. OPERATIONAL PERIOD 09/19/21 - 09/20/21 0700-0700
---------------------------	---	--	----------------------------------	---

5. INCIDENT MEDICAL AID STATIONS

MEDICAL AID STATIONS	LOCATION	ALS	
		YES	NO
Medical Trailer	ICP	X	
Medical Trailer	Trinity Spike	X	

6. TRANSPORTATION

A. Ground Ambulance

NAME	LOCATION	PHONE	ALS	
			Yes	No
Mountain Medics AMB #1 (Days)	Branch V (Spiked at Trinity Spike)	River Communications	X	
Mountain Medics AMB #2 (Nights)	Branch X (At ICP)	River Communications	X	
Etna Ambulance (Days)	Branch X (At ICP)	River Communications		X

B. Air Ambulance

NAME	PHONE #	LOCATION / TYPE	ALS	
			Yes	No
Air Ambulance	911 / (530)841-4600	Type 3 / Air Ambulance Only	X	
CHP	911 / (530)841-4600	Type 3 / Daytime Hoist	X	
Helicopter 8HX	911 / (530)841-4600	Type 3 / Daytime Short Haul		X
Coast Guard	911 / (530)841-4600	Type 2 / Day and Night Hoist		X
National Guard 820	911 / (530)841-4600	Type 1 / Day and Night Hoist	X	

7. HOSPITALS

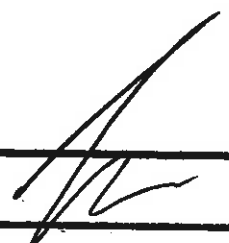
NAME	ADDRESS	TRAVEL TIME		PHONE	TRAUMA		HELIPAD		BURN CENTER	
		AIR	GR ND		Yes	No	YES	NO	YES	NO
		Min	Hr.							
Trinity General Hospital	60 Easter Avenue, Weaverville, CA 96093 Lat/Long 40 44.17, 122 56.22	35	2	(530) 623-5541	LVL		X			X
Fairchild Medical Center	444 Bruce Street, Yreka, CA 96097 Lat/Long 41 43.20, 122 38.70	15	30	(530) 842-4121	LVL	4	X			X
Asante Rogue Regional Medical Center	2825 East Barnett Road, Medford OR 97504 Lat/Long 42 19.10, 122 49.50	25	2	(541)789-7132	LVL	2	X			X
Mercy Medical Center Redding	2175 Rosaline Ave. Clairmont Hgts, Redding, CA 96001 Lat/Long 40 34.290, 122 23.670 (7CA3)	25	2	(530) 225-7214	LVL	2	X			X
UC Davis Medical Center	2315 Stockton Blvd. Sacramento, CA Lat/Long 38 33.28, 121 27.35 (3CLO)	2	4.5	(916) 734-3892	LVL	1	X		X	

8. MEDICAL EMERGENCY PROCEDURES

LINE "MEDICAL-EMERGENCY" PLAN:

- Crew Supervisor to contact Division Supervisor/Operations with:
 - Patient Complaint, Condition and Location via Tactical or Command frequency. Priority 1/Red & 2/Yellow Patients trigger incident within Incident (IWI).
- Division Supervisor/Operation contacts Communications/Dispatch:
 - Division Supervisor or POC* will run "Medical -Emergency" on the Command frequency.
 - Division Supervisor or POC* to use "Medical Incident Report" worksheet on back of this page or back of IRPG.
 - Communication contacts Medical Unit Leader on the Command frequency or cell phone (562) 252-2168 (Medical Emergencies Only).

POC* (Point of Contact) and/or Operations



LINE "NON-EMERGENCY INCIDENT" PLAN:

- Crew Supervisor to contact Division Supervisor with:
 - Patient Complaint, Condition and Location via Tactical or Command frequency. Priority 3/Green, (Minor) Patients do not trigger incident within Incident (IWI).
- Division Supervisor to contact Communications/dispatch:
 - Division Supervisor or POC* will run "Non-Emergency Incident" on the Command frequency.
 - Division Supervisor or POC* will use "Medical Incident Report" worksheet on the back of this page or back of IRPG.
 - Communications contacts Medical Unit Leader on the Command frequency or cell phone (562) 252-2168 (For medical related incidents only).

IN-CAMP - 24 HOUR MEDICAL

- Contact 911 and Medical Unit (562) 252-2168 with:
 - Patient Complaint, Condition and Location

9. PREPARED BY
Tre Thierry MEDL (T)

10. REVIEWED BY
Safety Officer *Paul Deusch SOFC*

Medical Incident Report

FOR A NON-EMERGENCY INCIDENT: WORK THROUGH CHAIN OF COMMAND TO REPORT AND TRANSPORT INJURED PERSONNEL AS NECESSARY.

FOR A MEDICAL EMERGENCY: IDENTIFY ON SCENE INCIDENT COMMANDER BY NAME AND POSITION AND ANNOUNCE "MEDICAL EMERGENCY" TO INITIATE RESPONSE FROM COMMUNICATIONS

Use the following items to communicate situation to communications/dispatch.

1. CONTACT COMMUNICATIONS / DISPATCH (Verify correct frequency prior to starting report)

Ex: "Communications, Div. Alpha. Stand-by for Emergency Traffic."

2. INCIDENT STATUS: Provide incident summary (including number of patients) and command structure.

Ex: "Communications, I have a Red priority patient, unconscious, struck by a falling tree.

Requesting air ambulance to Forest Road 1 at (Lat./Long.)

"This will be the Trout Meadow Medical Incident, IC is TFLD Jones. EMT Smith is providing medical care."

Severity of Emergency AND Transport Priority (priority 1, 2, 3)	<input type="checkbox"/> RED / PRIORITY 1 Life or limb threatening injury or illness. Evacuation need is IMMEDIATE <i>Ex: Unconscious, difficulty breathing, bleeding severely, 2^o - 3^o burns more than 4 palm sizes, heat stroke, disoriented.</i>	
	<input type="checkbox"/> YELLOW / PRIORITY 2 Serious injury or illness. Evacuation may be DELAYED if necessary. <i>Ex: Significant trauma, unable to walk, 2^o - 3^o burns not more than 1-3 palm sizes.</i>	
	<input type="checkbox"/> GREEN / PRIORITY 3 Minor injury or illness. Non-Emergency transport <i>Ex: Sprains, strains, minor heat-related illness.</i>	
Nature of Injury or Illness & Mechanism of Injury		<i>Brief Summary of Injury or Illness (Ex: Unconscious, Struck by Falling Tree)</i>
Transport Request		<i>Air Ambulance / Short Haul/Hoist Ground Ambulance / Other</i>
Patient Location		<i>Descriptive Location & Lat. / Long. (WGS84)</i>
Incident Name		<i>Geographic Name + "Medical" (Ex: Trout Meadow Medical)</i>
On-Scene Incident Commander		<i>Name of on-scene IC of Incident within an Incident (Ex: TFLD Jones)</i>
Crew Patient Care		<i>Name of Care Provider (Ex: EMT Smith)</i>

3. INITIAL PATIENT ASSESSMENT: Complete this section for each patient as applicable (start with the most severe patient)

Agency Affiliation: (NO PATIENT NAMES)	Federal	Contractor	Local Government
--	---------	------------	------------------

Patient Assessment:	Age:	Weight:	Chief Complaint:
---------------------	------	---------	------------------

(If pertinent to Injury)	Skin Signs: (color/moisture/temp)	Level of Consciousness:	BP:	HR:	Respirations:
--------------------------	-----------------------------------	-------------------------	-----	-----	---------------

Treatment:

4. TRANSPORT PLAN:

Evacuation Location (drop point, intersection, helispot, Lat. / Long, hazards)	Patient's ETA to Location:
--	----------------------------

5. ADDITIONAL RESOURCES / EQUIPMENT NEEDS:

Paramedic / EMT - Crews - Immobilization Devices - AED - Oxygen - Trauma Bag - IV/Fluid(s) - Splints - Rope rescue - Wheeled litter - HAZMAT - Extrication

6. COMMUNICATIONS: Identify State Air/Ground EMS Frequencies and Hospital Contacts as applicable

Function	Channel Name/Number	Receive (RX)	Tone/NAC *	Transmit (TX)	Tone/NAC *
COMMAND					
AIR-TO-GRND					
TACTICAL					

7. CONTINGENCY: Considerations: If primary options fail, what actions can be implemented in conjunction with primary evacuation method? Be thinking ahead.

8. ADDITIONAL INFORMATION: Updates/Changes, etc.

**REMEMBER: Confirm ETA's of resources ordered. Act according to your level of training
Be Alert - Keep Calm - Think Clearly - Act Decisively**

*** Follow up with MEDL upon return to ICP ***



Human Resources Message September 19, 2021

Monitor Your Stress

Stress is a normal and necessary part of life. It helps you make choices, develop plans, change your behavior and begin new activities. It can be a positive force, giving you energy and the drive to be your very best.

Severe and prolonged stress, however, can be harmful, and certain signs and symptoms are indicators that your stress reaction is persistent and serious.

If you are experiencing “typical” stress symptoms such as anxiety, worry, irritability, apathy, negativity or trouble sleeping, but you find you return to normal when the stress is over, you are most likely experiencing normal stress reactions.

However, if your stress symptoms continue even after the stress is over, and/or you experience any of the symptoms below, you may be experiencing severe stress that can be harmful and should be addressed with your medical professional:

- Loss of control of body functions, emotions or thinking
- Can't fall or stay asleep
- Recurrent vivid nightmares
- Intense guilt or shame
- Panic attacks or rage
- Inability to enjoy activities
- Thoughts of suicide or homicide
- Stress symptoms that get worse instead of better
- Stress symptoms that get better for a while then return worse

6 STEPS TO BEATING STRESS

1. GET SUPPORT

4. GET SUPPORT

2. GET SUPPORT

5. GET SUPPORT

3. GET SUPPORT

6. GET SUPPORT

*Everything is easier when you have a
helping hand to guide you along.*

Please look out for yourself and one another, and seek whatever help is needed to stay healthy and manage your stress!

Julie Nelson, HRSP
720-512-7591

COVID-19 Vaccinations are Available While on the Incident

Free vaccines are available at the following locations in the area surrounding the River Complex:

Walmart Inc #10-1630 – (530) 842-7330
1906 Fort Jones Rd, Yreka, CA 96097
Check appointment availability (vaccines in stock)
21.13 miles

Fairchild Medical Center – (530) 841-6291
444 Bruce St, Yreka, CA 96097
Check appointment availability (vaccines in stock)
22.22 miles

Rite Aid #RA106104 – (530) 842-5596
807 S Main St, Yreka, CA 96097
COVID-19 appointments available
22.78 miles

Rite Aid #RA106103 – (530) 926-3826
310 W Lake St, Mt Shasta, CA 96067
COVID-19 appointments available
31.95 miles



**Use this QR Code to
access vaccination
locations nearest your
assignment on the
River Complex**

If you choose to get vaccinated while on the incident, compensatory time will be provided.



Test early Test often!!

USDA Forest Service



Free COVID-19 tests are available for
wildland fire personnel!!!

Not just for Forest Service personnel! Anyone associated with wildland fire work is welcome.

To get tested for free, go to the

Klamath National Forest Headquarters (aka “Klamath Supervisor’s Office”)

**1711 South Main St, Yreka, CA 96097 - 7 AM to 6 PM
every day!**

Please use the QR code to the right to register (either before or on-site) for the test administered by Emergency Response Logistics, Inc. That QR code will take you to a form.



In the interest of protecting each other and our families, we encourage testing early and often! Please contact testing.klamath1@gmail.com if you have questions or comments.

All USFS employees and non-USFS personnel assigned to fires in the Klamath NF area or passing through Yreka en route to or from fire assignments are encouraged to stop to be tested prior to reporting to the assignment or traveling to another site or home.

A core value of the Forest Service is safety. This testing availability is an additional step in safeguarding human life and protecting our most valuable resources. Our Code and Commitments include being trusted to “do right” by each other and the communities we serve.

River Complex Message Board

To receive mail please address:

Your Name O or E #

River Complex (ICP or spike camp)

C/O General Delivery

Etna, CA 96027

Have Photos? Let us share them to the world for you!

Send photos of firefighters working on in/direct line, laying hose, structure protection, and crews actively fighting fire to 2021.river@firenet.gov

Please note the location(s) especially if you are near a community, the photographers name, and be sure they have on proper PPE.

Thank you in advance!

A reminder from the Finance Section:

Please email finance related documents if you are not able to turn in hard copies to:

2021.river.finance@firenet.gov

Please make sure your shift tickets include:

****Resource Order Number****

****Correct dates and times****

****Employee should total hours worked and circle the total****

****Signed by your Incident Supervisor****

****Justifications are required for all****

--Hazard Pay--

--Excessive Shifts--

--No meal breaks shown--

River Complex Message Board

Training Specialist Message

To assure proper documentation for your assignment:

1. Scan the Incident QR Code, located on the front cover of the IAP
2. Click on Trainee Check-In
3. Complete the Trainee Registration Form & submit

At the end of your assignment:

1. **Trainee:** Scan the incident QR code. Click on the Trainee Exit Interview, complete the form and submit.
2. **Trainer:** Fill in the Position Task Book as completely as possible for this incident.
3. **Trainer:** Complete the ICS 225 performance evaluation and discuss with your Trainee. Make sure it's signed by both the Trainer and Trainee. Take a picture/copy of the ICS 225 and send it to imt2training@gmail.com

The Training Specialist will send the training documents to the email address you provided.

For training related questions, call/text Dominic Panno (TNSP) at 530-913-8251 or email-
imt2training@gmail.com



Local Government Resources on CFAA

If you are demobing and there is no OES AREP there:

- Have the FSC or IC review and sign your 42s
 - You give the incident the pink copy
 - You keep the gold copy
- You mail the white and green (if it has a green) to OES Headquarters per the instructions on the 42

**OES JOB AIDS, FORMS, F-42 SAMPLES AND
CFAA AGREEMENT**



Your OES Fire & Rescue Assistant Chief
Patrick Titus
916-634-9225



**RIVER COMPLEX
CA-KNF-006385
FINANCE LIST OF NEEDS**

Resource Order #	RESOURCE ID	DESCRIPTION OF ISSUE
C-157	GRIZZLY FIREFIGHTERS INC	ONE NAME MISSING FROM CTR ON 8/30/21
C-196	TORRES CONTRACTING	CTR 09/13/21 WRONG START TIME FOR CREW MEMBERS
E-404	INDEPENDENT LOG CO.	INCOMPLETE SHIFT TICKETS
E-98	J3 CONTRACTING	NO STOP TIME & MISSING A SHIFT TICKET
O-1264 & O-1288	CASEY CZINSKI JEFF SCHRICKER	NEED SEPARATE CTRS & WRONG DATES
C-165	PLACER 5	TWO SHIFT TICKETS HAVE SAME DATE
	MATT OR GWEN JOHNSON	NO RO ON S/T - SEE TRACY
E-552	CA-SHF-E332	COME SEE MAUREEN
E-639	DEER MOUNTAIN FIRE	SHIFT TICKET ISSUES ON 9/12-9/13/21
S-759	TRIPLE FLARE	NEED ODO READING FOR MILEAGE
E-555	JIM JOHNSON LOGGING	OPERATOR NEEDS TO SIGN A SHIFT TICKET
E-679	OILARS AGRICULTURAL SERVICES	TRANSPORT MILES QUESTION
C-211	R&R CONTRACTING	NEED HOTEL RECEIPTS FOR DRIVE UP TO FIRE
E-325	GRANITE COMMERCIAL	WRONG DATE AND NO SIGNATURE ON A CTR
O-1352	CITY OF FLAGSTAFF	AGREEMENT INFORMATION
O-993	ALEX LUQUIN	OT HOURS
E-395	HEADRICK LOGGING	WRITE THE E# ON ALL SHIFT TICKETS
E-473	ETNA AMBULANCE	HOURS
E-700	HYGIENE FIRE	CORRECT TIME ON SHIFT TICKET
E-585	IDAHO TRAILBLAZERS	QUESTIONS SHIFT TICKET 9/17/21
C-211	R & R CONTRACTING	SHIFT TICKET ISSUES
C-212	CABRERA CONTRACTING	CTR START TIME

Logistic Message Board

River Communication's 24 hours phone,
530-467-1509

In Camp Medical 24 Hours 911 and 562-252-2168

Hours of Operations

Medical Trailer ICP 0600-2200

Medical Trailer Trinity Spike 0600-2200

Food 0530-0900 / 1800-2130

Showers 0500-1200 / 1400-2300

Laundry 0500-2200

Fuel ICP, 0600-1300 / 1500-2200

Fuel Trinity Spike 0630-1100 / 1400-2100

Supply Unit 0600-2200

Rains and Wind are coming Put your rain fly on and stake down your tent.

For all Camps

NO SLEEPING IN VEHICLE PARKING AREA OR DRIVING IN SLEEPING AREA.

DIVS or Higher only to contact

Full Hose Kit:

- 5000 ft. 1 ½" hose
- 2000 ft 1" hose
- 25 ea 1 ½" gated wye
- 25 ea 1 ½" reducers
- 25 ea 1" nozzles

Half Hose Load:

- 2500 ft 1 ½" hose
- 1000 ft 1" hose
- 12 1 ½" gated wyes
- 12 1 ½" reducers
- 12 ea 1" nozzles

River Communications has this list

River Complex Food Menu

Dinner

9/19 Cheeseburgers & Hot Dogs

9/20 Half Chicken

9/21 Pork Chops

9/22 Pulled Pork Sandwich

Breakfast

9/20 Saratoga Eggs

9/21 Scrambled Eggs

9/22 Fresh Scrambled Eggs

9/23 Fried or Scrambled Eggs

09/19/2021

TENTATIVE RELEASE

RIVER COMPLEX US-CA-KNF-006385

CREWS

C-157 0800 (HC2) GRIZZLY BLUE CREW
 C-165 0830 (CC) PLACER 5
 C-168 0900 (HC1) KLAMATH IHC - #14

EQUIPMENT

E-571 0800 (WTS2) SWANSON LOGGING
 E-333 0820 (DOZ2) BLACK OPERATIONS
 E-411 0840 (WTT1) PAULTON ENT.
 E-574 0900 (ES3) S/T-HUU-9122C
 E-591 0920 (ENG6) SMITHFIELD FD - E641
 E-607 0940 (ENG2) ETNA - 1414
 E-635 1000 (DZS2) S/T-LNU-9140L
 E-506 1020 (GRD) M. PETERS

OVERHEAD

O-1185 0800 (DIVS) PINDELL, SETH
 O-489 0815 (HMGB) ESTRADA, EDDIE
 O-853 0830 (REAF) CHINCHILLI, ANNA
 O-592 0845 (EMTF) ADVENTURE MEDICS
 O-1384 0900 (DIVS) TURMAN, LARRY
 O-1005 0915 (HEQB) WRENN, WILLIAM
 O-1061.23 0930 (DIVS) TAI, BRIAN

09/20/2021

TENTATIVE RELEASE

RIVER COMPLEX US-CA-KNF-006385

CREWS

C-227 0800 (HCS1) S/T-TGU-9254G
 C-191 0820 (HC1) SIK1
 C-208 0840 (HC1) SIK2

EQUIPMENT

E-514 0800 (ENG3) LONE PEAK-1668
 E-523 0830 (ENG6) UT-MLF-EPHRAIM-611
 E-529 0900 (ENG4) UT-UWF- E-461
 E-525 0920 (ENG6) CO-CRD-1613
 E-527 0940 (ENG6) ENTERPRISE FD - B-56
 E-528 0945 (ENG4) ID-BOF - 451
 E-618 1000 (ES3) S/T-SKU-9262C
 E-532 1015 (ENG4) ID-IFD - 3442
 E-719 1030 (ES6) S/T-OES-2860F

OVERHEAD

O-1010 0730 (SMOD) KAIBAB MODULE
 O-982 0800 (EMTF) JOYCE, CARL
 O-992 0815 (FFT2) SMITH, A'NAKA SEPHRA
 O-1105 1100 (INCM) YERKES, LAURAN
 O-1057 1700 (EQTR) WEBB, REBECCA



FLIGHT REQUEST

Submit 3 days prior demob date

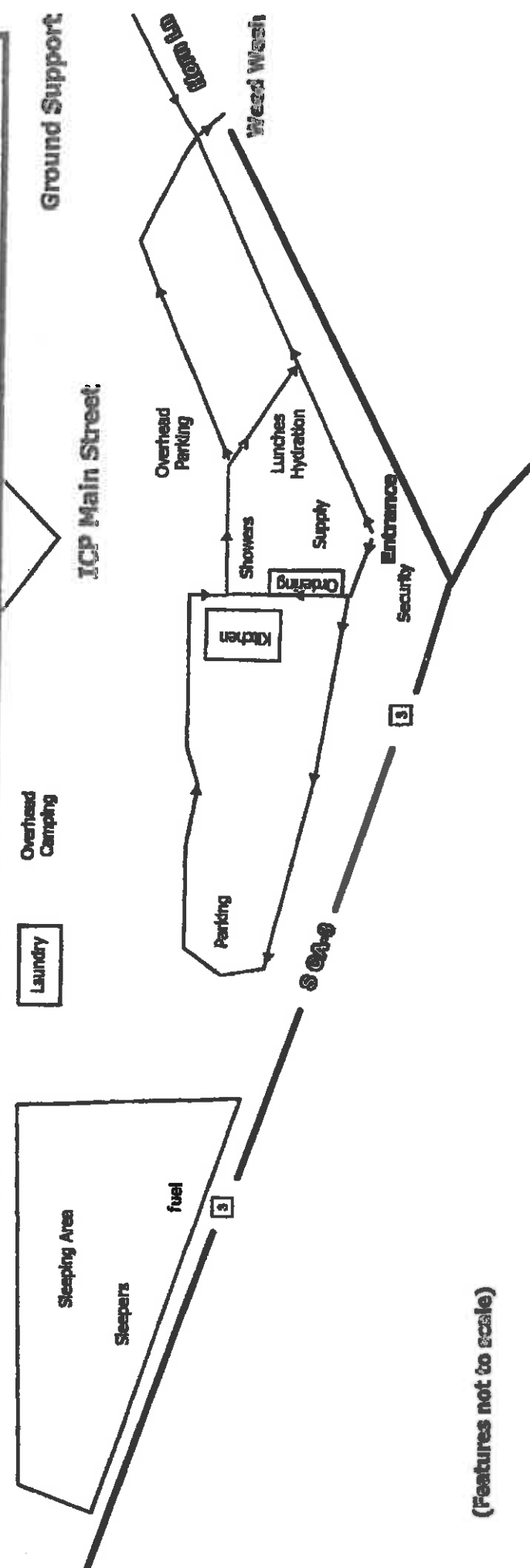
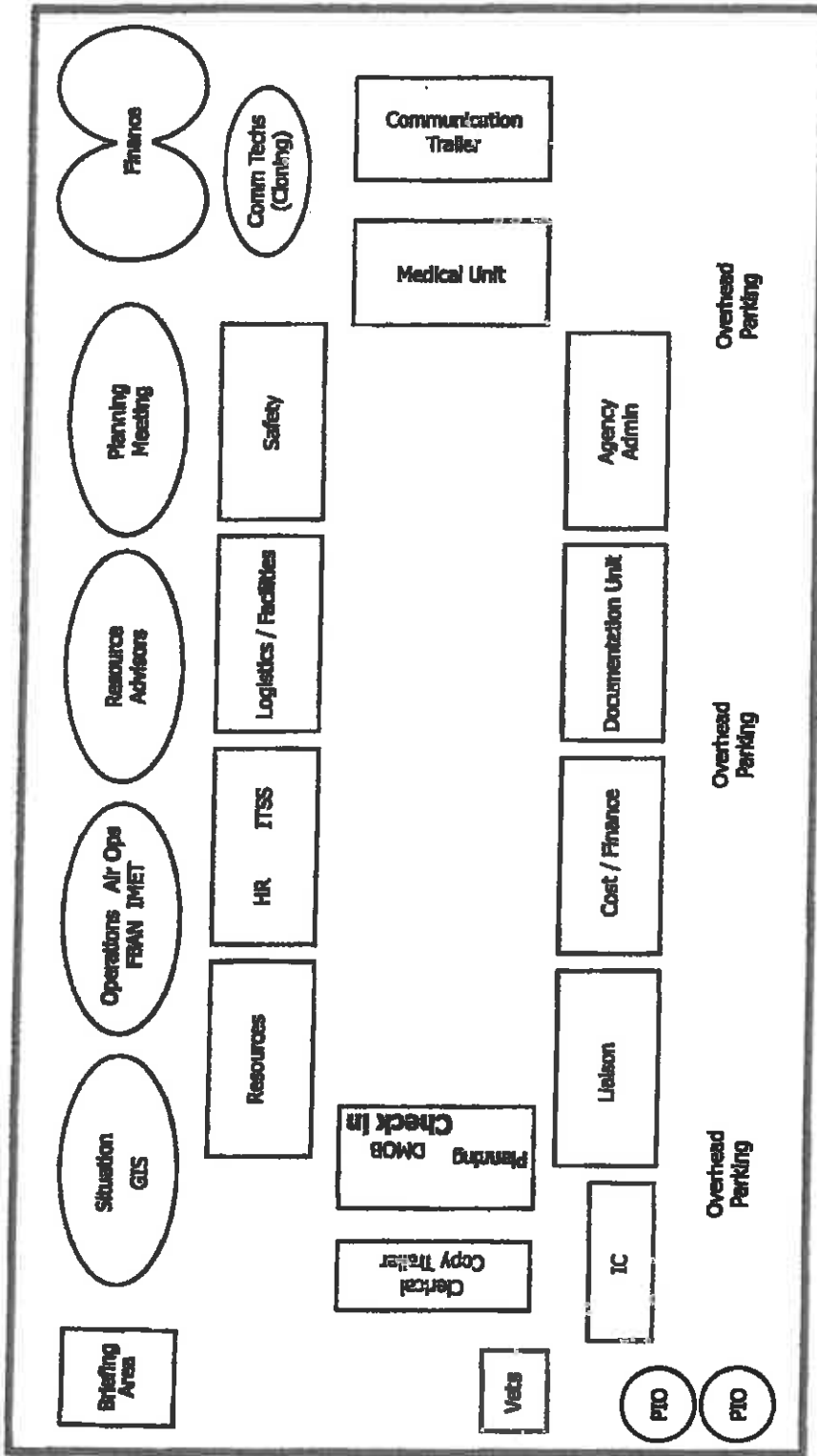
Request Order #	
Name as shown on ID	
Date of Birth	
Cell Phone	
Male or Female	
Email Address	
Last Work Date	
Flight Date	
Departure Airport Airport Code	
Arrival Airport Airport Code	
Rental Location	
Need ride to airport?	

******Return this Flight Request at Least 48 hours prior to Travel ******

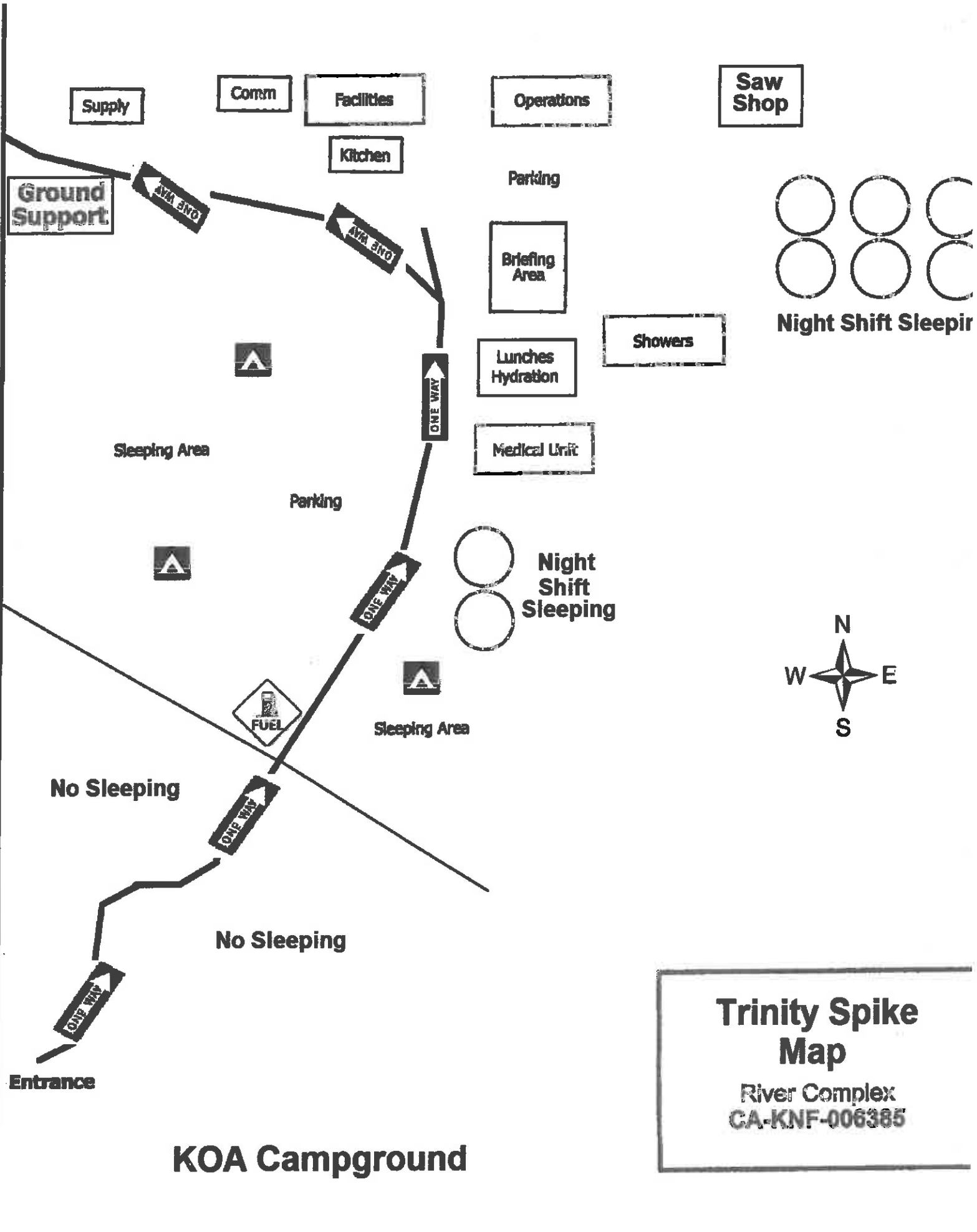
This can be emailed if you cannot make to Demob at: 2021.river.demob@firenet.gov

KNF RIVER COMPLEX		CA TEAM 2 CONTACT INFO		
NAME	POSITION	UNIT	Primary Contact	EMAIL
COMMAND				
Johnny, Nickie	ICT1	CA-ENF	530-409-9210	nickie.johnny@usda.gov
Day, Bea	Deputy ICT1		505-967-8835	barbara.day@usda.gov
Minton, Lucas	ICT1(t)	AZ-GCP	928-707-1940	lucas_minton@nps.gov
Leusch, Paul	SOF1	OR-MTH	971-334-5584	paul.leusch@usda.gov
Theune, Mike	PIO1	CA-KNP		2021.river@firenet.gov
Wyatt, Daron	PIO1(t)	CA-MNP		2021.river@firenet.gov
Ekman, Robbin	LOFR	CA-LVN	559-903-7186	Liaison.River.KNF.2021@gmail.com
OPERATIONS				
Goss, John Day Operations	OSC1	CA-SNF	559-908-6526	john.goss@usda.gov
Juarez, Maeve Day Ops	OSC1(t)	CA-MTO	805-746-7073	mjuarez@montecitofire.com
Laeng, Robert Planning Ops	OSC1	CA-STF	209-352-0432	rlaeng@frontiernet.net
Botts, Jacob Planning Ops (t)	OSC2(t)	CA-PNF	530-736-3335	jbotts80@gmail.com
Eichamer, Josh Night Ops	OSC1(t)	CA-SRF	707-601-7080	
Neels, David	OPBD	CA-MTO	805-755-8863	dneels@montecitofire.com
Conklin, Matt	OPBD	CA-ANF	626-698-8052	matthew.conklin@usda.gov
Winkler, Rob	DIVS	CA-NOD	530-276-3189	rwinkler@blm.gov
Hildebrand, Mike	DIVS	CA-HAY	510-460-5568	mike.hildebrand@hayward-ca.gov
Akerbeg, Jake	DIVS	CA-WRP	530-638-5605	
Gavin, Andrew	DIVS		703-403-7363	
Harris, Terry	AOBD	TX-TXF	936-366-4239	terrygharris7@gmail.com
McElfish, Kelvin	ASGS	CA-BDF	909-907-2877	Bhlfdkem@hotmail.com
PLANS				
Herzog, Walter	PSC1	CA-NOD	530-310-3209	walter_herzog@firenet.gov
Grove, Aaron	PSC2(t)	CA-PNF	530-394-8094	aaron.grove@usda.gov
Nelson, Julie	HRSP		720-512-7591	julie.nelson@usda.gov
Documentation	DOCL		530-467-1506	
Ferguson, Jeff	RESL	CA-ENF	530-467-1524	jff.7170@gmail.com
Contreras, Irma	Demob/Check In	CA-SQF	530-467-1501/1523	2021.river.demob@firenet.gov
Mosley, John	SITL	CA-BIA	530-249-3889	john.mosley@bia.gov
Bass, Carvel	GISS	CA-PNF	415-412-6303	carvel24@gmail.com
Burns, Dennis	FBAN	CA-STF	209-770-3783	dburns@lpfire.org
Duran, David	FBAN(t)	CA-BDF	808-383-1395	david.duran@usda.gov
Panno, Dominic	TNSP	CA-TNF	530-913-8251	dpanno@comcast.net
LOGISTICS				
Crakes, Tom	LSC1	CA-LPF	805-878-1369	tcspul@hotmail.com
Communications 24-hour			530-467-1509	
Hodge, Jason	FACL	CA-VNC	805-444-5223	jason.hodge@ventura.org
Johansen, Chris @Trinity Spike	LSC3	AZ-COF	928-965-9132	
Preciado, Art @Trinity Spike	FACL	CA-CNF	510-507-5902	
Wilcox, Josh @Trinity Spike	RCDM		760-458-6112	
Warren, Troy	RCDM	CA-WDL	530-848-5430	troy.warren@cityofwoodland.org
Browning, Randy	SPUL	CA-SCR	530-400-3607	rbrowning@sacfire.org
Fitzgerald, Michael	GSUL	CA-SMF	310-866-2016	mike.fitzgerald@smgov.net
Hoffman, Myron	GSUL	CA-ANF	626-261-3191	
Morris, Henry	ORDM	CA-TLC	202-329-7781	
Harper, Kevin	COML	CA-MRP	661-330-0209	kharp911@gmail.com
Fong, Gerald	ITSS	CA-CSO	916-216-5236	gfong@blm.gov
Flynn, Michael	INCM	CA-LFD	818-590-1518	mike.flynn@lacity.org
	FDUL			
Mohlenbrok, Scott	MEDL	CA-GLN	562-225-7041	Scottmo24@gmail.com
FINANCE				
Lee, Larry	FSC1	CA-R05	951 205 3879	lawrence.lee@usda.gov
Taylor, Robert	FSC2(t)	CA-BDF	909-693-2875	robert.taylor2@usda.gov
Falls, Tracy	TIME	CA-MNP	805-665-3327	2021.river.finance@firenet.gov
Shapiro, Abby	PTRC	CA-RNP		2021.river.finance@firenet.gov
Sanchez, Andrea	COST		530-467-1504	
Avilla, Cassandra	COMP(t)	CA-LPF	805-665-3327	2021.river.finance@firenet.gov

**ICP Facilities
Map
River Complex
CA-KNF-006335**



(Features not to scale)



Trinity Spike Map

River Complex
CA-KNF-006385

KOA Campground

