

# INCIDENT ACTION PLAN

## RIVER COMPLEX



CA-KNF-006385  
P5N7CM (0505)



### OPERATIONAL PERIOD

10/15/2021 0700

to

10/16/2021 0700

# INCIDENT OBJECTIVES (ICS 202)

<b>1. Incident Name:</b> RIVER COMPLEX	<b>2. Operational Period:</b> Date From: 10/15/2021 Time From: 0700	Date To: 10/16/2021 Time To: 0700
---	---	--------------------------------------

**3. Objective(s):**

**Leader's Intent**

Implement a full suppression strategy on the fires within the River Complex. Values at risk include human safety, communities, private timberlands, critical infrastructure, associated improvements, and wilderness resources. Apply tactics that offer the highest probability of success commensurate with resource availability.

**Management Objectives**

Provide for firefighter and public safety through hazard recognition and application of the risk management process.

Continue to provide timely information to all affected agency partners, cooperators, and to the public.

Coordinate suppression and repair activities with incident Resource Advisors to minimize impacts to wilderness, natural and cultural resources, and to work towards meeting suppression repair standards for turnover to local districts.

Reduce risk and limit exposure to infectious diseases by minimizing large group settings, reinforcing social distancing, wearing face coverings, and handwashing.

**Control Objectives**

Keep the Cronan Fire within existing control lines.

Keep the Haypress Fire within existing control lines.

Work towards meeting 100% completion of suppression repair guidelines.

**5. Site Safety Plan Required?** Yes  No

**Approved Site Safety Plan(s) Located at:**


**6. Incident Action Plan**

- |  |  |  |  |
|--|--|--|--|
| <input checked="" type="checkbox"/> ICS 203    | <input type="checkbox"/> ICS 215A                    | <input type="checkbox"/> ICS 205 A                   | <input checked="" type="checkbox"/> ICS 206WF    |
| <input checked="" type="checkbox"/> ICS 204    | <input checked="" type="checkbox"/> ICS 220          | <input checked="" type="checkbox"/> Training Message | <input type="checkbox"/> PIO Message             |
| <input checked="" type="checkbox"/> ICS 205    | <input type="checkbox"/> HR Message                  | <input checked="" type="checkbox"/> Travel Map       | <input type="checkbox"/>                         |
| <input checked="" type="checkbox"/> ICS 206    | <input checked="" type="checkbox"/> Weather Forecast | <input checked="" type="checkbox"/> Demob List       | <input checked="" type="checkbox"/> READ Message |
| <input checked="" type="checkbox"/> Safety Msg | <input type="checkbox"/> Fire Behavior               | <input checked="" type="checkbox"/> Covid-19 Message | <input checked="" type="checkbox"/> ICS 214      |

**7. Prepared By:** Andrew Branson      **Position/Title:** PSC      **Signature:** 

**8. Approved by Incident Commander:** Erik Newell      **Signature:** 

## ORGANIZATION ASSIGNMENT LIST (ICS 203)

<b>1. Incident Name:</b> RIVER COMPLEX		<b>2. Operational Period: Date From:</b> 10/15/2021 Time From: 0700		<b>Date To:</b> 10/16/2021 Time To: 0700	
<b>3. Incident Commander(s) and Command Staff:</b>			<b>7. Operation Section:</b>		
IC/UC's	Erik Newell	Day Operations	Kelly Harper		
Trainee	JB Clay	Planning Operations	Mark Ingram		
Safety Officer		Night Operations			
Information Officer	Karen Robinson/ Kyle Mikolajczyk				
Liaison Officer					
		Division/Group	Q	Gabe Medina LWD: 10/21	
		Division/Group	R	Kelsey Lofdahl LWD: 10/25	
<b>4. Agency/Organization Representatives:</b>			Division/Group	U/K/L/S/T	Unstaffed
Klamath NF	Rachel Smith/ Clint Isbell	Division/Group	SUPPRESSION GROUP	Travis Moyer LWD:10/22	
Shasta-Trinity NF	Rachel Birkey/ Steve Kozel	Division/Group			
CalFire SKU	Phil Anzo/ Luke Kendall			<b>REPAIR GROUPS</b>	
		Division/Group	CALLAHAN REPAIR GROUP	Cody Stacher LWD: 10/25 / Craig Newell(T) LWD: 10/18	
Siskiyou County SO/OES	Bryan Schenone	Division/Group	COFFEE REPAIR GROUP (O)	Travis Moyer LWD: 10:22	
Trinity County SO	UnderSheriff Brian Ward	Division/Group	CRONAN REPAIR GROUP	Dave Barnett LWD: 10/16	
		Division/Group	ROAD HAZARD REPAIR GROUP	Zeke Jones LWD: 10/21	
CHP	Brandon Lale	Division/Group	PACKERS GROUP	Sara Martinez LWD: 10/18 / Robert Bergschneider(T) LWD: 10/18	
Cal Trans Siskiyou	Roger Matthews	Division/Group			
Cal Trans Trinity	Ron Isabel	Division/Group			
Private Forestry	Darin Quigley	Division/Group			
Lead READ	Frank Carus	Division/Group			
Lead ARCH	Justin Rhode	Division/Group			
CAL OES	Jason Vela/ Robert Goyeneche	Division/Group			
Covid Advisor	Scott Peedle	Division/Group			
CCC	Alex Luquin	Division/Group			
		Division/Group			
		Division/Group			
<b>5. Planning Section:</b>			Division/Group		
Chief	Andrew Branson	Division/Group			
Demobilization Unit	Terri Matthews	Division/Group			
Resource Unit	Frank Henderson	Division/Group			
Situation Unit		Division/Group			
Documentation Unit		Division/Group			
Status Check-In		Division/Group			
Human Resource Spec.		Division/Group			
ITSS		Division/Group			
Fire Behavior Analyst		Division/Group			
Incident Meteorologist	Andy Gorelow	Division/Group			
GISS	Nate Duncan	<b>Air Operations Branch</b>			
Training Specialist	Chad Englert		Air Support Group Supervisor		
			Air Tactical Group Supervisor		
<b>6. Logistics Section</b>					
Chief	Scott Schuster		Air Operations	Kris Maldonado	
Deputy					
LOGS Trainee	Kira Santulli/ Natalie Otto				
Base Camp Manager	Rigo Benítez				
Base Camp Manager(t)	John Davis				
FACU/SECM	Paul Kimpling (T)	<b>8. Finance/Administration Section:</b>			
Ground Support Unit	Jake Kujawa	Chief	Connie Lang		
Communications Unit	Paul Noa	Time Unit	Trina Leininger		
Incident Comm Manager	Jeff Davis/ Patrick Johannessen	Equipment Time	Thomas Lauchen		
Medical Unit	Leif Juliussen	Personnel Time	Tamra Martinez		
Ordering Manager	Kira Santulli				
<b>Prepared By: Name:</b> Frank Henderson		<b>Position/Title:</b> PSC3 (T)	<b>Signature:</b> 		
<b>ICS 203</b>		<b>Date/Time:</b> 10/14/2021 1900 hours			



## River Complex Weather Forecast



**FORECAST NO:** 74  
**PREDICTION FOR:** Day Shift  
**SHIFT DATE:** Friday, Oct 15, 2021  
**FORECAST ISSUED:** 1900 October 14, 2021

**NAME OF FIRE:** River Complex  
**UNIT:** Klamath National Forest  
**Incident Meteorologist:** Andy Gorelow, IMET

**WEATHER DISCUSSION:** High pressure will remain over the area through Saturday keeping temperatures near to slightly above normal. Valley and mid-slope winds will be generally light and terrain driven with ridgetop winds becoming west 5-9 mph in the afternoon. In areas where smoke is produced, some limited visibility is possible before the inversion breaks by mid-morning. A storm system will move into the region Sunday with much cooler temperatures, gusty southwest winds, and rain becoming likely by afternoon and evening. Rainfall amounts between 0.10-0.25" are possible and some areas may receive more than 0.25" by Monday morning.

### TODAY (FRIDAY):

**WEATHER:** Mostly sunny and warmer.

**MAX TEMPERATURES:** Midslopes/Ridges: 55-65      Valleys: 65-75  
**MIN HUMIDITY:** Midslopes/Ridges 20-30%      Valleys: 20-30%

**20 FOOT WINDS:** Ridges: W-NW 5-10 mph.  
Valleys: Generally terrain driven 3-6 mph.

**Chance of Wetting Rain:** 0%

### TONIGHT:

**WEATHER:** Mostly clear and not as cold.

**MIN TEMPERATURES:** Midslopes/Ridges: 30-40      Valleys: 35-40  
**MAX HUMIDITY:** Midslopes/Ridges 45-55%      Valleys: 60-70%

**20 FOOT WINDS:** Ridges: Northeast 5 mph  
Valleys: Light drainage.

**Saturday through Monday:** High pressure will remain over the region Saturday bringing the warmest day of the week along with dry conditions. Temperatures will likely range in the 70s in the valleys with mid to upper 60s at the mid elevations and ridges. We will also see RHs drop in the afternoon ranging from 20-30% over most areas. An area of low pressure off the coast is expected to break down the ridge Sunday leading to much cooler temperatures and gusty southwest winds. Rain chances will also increase by Sunday afternoon with rain likely into Sunday evening. Widespread rainfall amounts between 0.10-0.25" is likely and it's possible that some areas may receive between 0.25-0.50" by Monday morning. Snow levels will start Sunday around 7000 feet, but fall to around 4500 by evening with some of the higher peaks receiving between 1-2" of snow.

Late next week, there is high probability that a significant rain event will occur starting late next week as a series of wet storm systems impact the region. It is not out of the question to see at least 2-4" of rain between 10/22 – 10/28.













# ASSIGNMENT LIST (ICS 204 WF)

CONTROLLED UNCLASSIFIED INFORMATION//BASIC

<b>1. Incident Name:</b> <b>RIVER COMPLEX</b>	<b>2. Operational Period:</b> Date From: 10/15/21    Date To: 10/16/21 Time From: 0700    Time To: 0700	<b>3. Division</b> <b>CALLAHAN REPAIR GROUP</b>
--	---	--

<b>4. Operations Personnel:</b>		<b>Page 1 of 1</b>
Operations Section Chief: <b>Kelly Harper</b>	Night Ops:	
Branch Director:	Branch Safety:	
Division/Group Supervisor: <b>Cody Stacher LWD: 10/25 / Craig Newell(T) LWD: 10/18</b>	Air Attack:	

<b>5. Resources Assigned:</b>		** Asterisks Denote 24 Hour Resources **					
Resource Identifier	Request #	LWD	Leader	Personnel	Hours	Reporting Location	
HC2IA PVT-FIRESTORM C5	C-270	10/17	MAC NORLIE	19	0700-1900	#REFI	
HC2IA PVT-GRAYBACK FORESTRY 7B	C-292	10/16	TIM BREWER	20	0700-1900	ETNA ICP	
DOZ2 PVT-EMERY FARM	E-401	10/20	LOGAN GARNER	2	0700-1900	ETNA ICP	
EXCA PVT-RICHARD MCLERAN TRUCKING	E-783	10/15	RICHARD MCLERAN	2	0700-1900	ETNA ICP	
CHIP PVT-DAVIS CORP	E-822	10/24	JOSIAH KELLY	3	0700-1900	ENTA ICP	
HEQB GOODPASTER	O-1724	10/24	NOEL GOODPASTER	1	0700-1900	ETNA ICP	
EMPF- REIBOLD	O-1691	10/20	ROBIN REIBOLD	1	0700-1900	ETNA ICP	
REAF REIMAN	O-1611	11/15	JOE REIMAN	1	0700-1900	ETNA ICP	
REAF JAMIESON	O-798	10/23	TRISTAN JAMIESON	1	0700-1900	ETNA ICP	
REAF (T) DISANTO	O-1673	10/18	DAVID DISANTO	1	0700-1900	ETNA ICP	

**6. Work Assignments:**  
Implement suppression repair according to the repair plan guidelines. Coordinate activities with the assigned TFLD/HEQB. Suppression repair will be completed to resource advisors specifications.

**7. Special Instructions:**  
All work must be approved by Resource Advisors.  
REAFS and READS will check in and out with DIVS. All natural and cultural resource concerns are flagged with orange/white candy-stripe flagging.  
  
Reno REMS Unit located at DP 37. Mountain Medics Ambulance #1 located at DP 32.

<b>8. Communications</b>							
Name	Ch	Function	Rx Freq	Rx Tone	Tx Freq	Tx Tone	Notes
NIFC C31	B.3	COMMAND	173.0250N	T-9 100.0	163.8250N	T-9 100.0	CRAGGY PEAK
NIFC C112	B.6	COMMAND	173.6000N	T-9 100.0	162.0750N	T-9 100.0	BONANZA KING
NIFC T6	11	TACTICAL	166.7750N	T-9 100.0	166.7750N	T-9 100.0	CALLAHAN
A/G CMD	13	AIR TO GROUND	169.1500N		169.1500N		DIVS AND ABOVE
A/G TAC	14	AIR TO GROUND	162.8125N		162.8125N		AIR TO GROUND TACTICAL
CALCORD	15	MEDICAL	156.0750N	T-6 156.7	156.0750N	T-6 156.7	MEDEVAC COORDINATION
AIRGUARD	16	AIRGUARD	168.6250N		168.6250N	T-1 110.9	PHONE ON TRANSMIT ONLY - URGENT AIRCRAFT CONTACT

<b>9. Prepared by: Name:</b> Frank Henderson	PSC
<b>ICS 204</b>	Date/Time: 10/14/2021 2200
	Personnel Count: 12

## ASSIGNMENT LIST (ICS 204 WF)

CONTROLLED UNCLASSIFIED INFORMATION/BASIC

<b>1. Incident Name:</b>		<b>2. Operational Period:</b>		<b>3. Division</b>	
<b>RIVER COMPLEX</b>		Date From: 10/15/21	Date To: 10/16/21	<b>COFFEE REPAIR GROUP (O)</b>	
		Time From: 0700	Time To: 0700		

<b>4. Operations Personnel:</b>			Page 1 of 1
Operations Section Chief:	Kelly Harper	Night Ops:	
Branch Director:		Branch Safety:	
Division/Group Supervisor:	Travis Moyer LWD: 10:22	Air Attack:	

<b>5. Resources Assigned:</b>		<b>** Asterisks Denote 24 Hour Resources **</b>					
Resource Identifier	Request #	LWD	Leader	Personnel		Hours	Reporting Location
HC2IA PVT-TORRES CONTRACTING	C-278	10/17	JOSE VERA	20		0700-1900	ETNA ICP
DOZ2 PVT-BEN'S TRUCK & EQUIPMENT INC	E-790	10/17	BILL SCARBROUGH	2		0700-1900	ETNA ICP
DOZ2 PVT-ROBERT JOHNSON	E-789	10/17	LANE WILSON	2		0700-1900	ETNA ICP
EXCA PVT-DOWNEY TRUCKING	E-777	10/28	MASON DIXON	2		0700-1900	ETNA ICP
EXCA PVT-WD HEAVY EQUIPMENT	E-751	10/23	ALLEN GWILT	2		0700-1900	ETNA ICP
EXCA PVT-NORTH RIVERS CONSTRUCTION	E-782	10/28	TRAVIS PARRY	2		0700-1900	ETNA ICP
EXCA PVT-ZEBS TREE SERVICE	E-785	10/22	RON WAKE	2		0700-1900	ETNA ICP
EXCA PVT-SLO MO	E-778	10/25	RON FRANK	2		0700-1900	ETNA ICP
GRD1 PVT-OILAR	E-679	10/22	DANIEL RAMIREZ	2		0700-1900	ETNA ICP
GRD2 PVT-M PETERS	E-506	10/16	ALEXANDER GREY	2		0700-1900	ETNA ICP
GRD2 PVT-JOHNSON	E-543	10/17	JACK HOTTENDORF	2		0700-1900	ETNA ICP
WTS2 PVT-HURLIMANN	E-273	10/24	FRANK HURLIMANN	1		0700-1900	ETNA ICP
WTS2 DOWLING 001	E-765	10/19	PAT GREY	1		0700-1900	ETNA ICP
WTS2 DOWLING 002	E-766	10/24	OLIVER DOWLING	1		0700-1900	ETNA ICP
WTS2 PVT-GRANITE COMMERCIAL	E-235	10/26	WRENNA KELLER	1		0700-1900	ETNA ICP
CHIP PVT-YREKA OUTLAND	E-806	10/24	KENNETH JONES	3		0700-1900	ETNA ICP
HEQB JUBACK	O-1651	10/17	PATRICK JUBACK	1		0700-1900	ETNA ICP
HEQB (T) TINDLE	O-1689	10/17	ERIC TINDLE	1		0700-1900	ETNA ICP
REAF O'NEIL	O-1542	10/18	ERIC O'NEIL	1		0700-1900	ETNA ICP
WFM1 SNOWSLIDE	O-1739	10/26	NATHAN ROBINSON	10		0700-1900	ETNA ICP

**6. Work Assignments:**  
 Implement suppression repair according to the repair plan guidelines in Coffee Creek and Swift Creek. Coordinate all activities with the assigned TFLD/HEQB and resource advisors. Make contact with community members and address concerns as appropriate. Suppression repair will be completed to resource advisors specifications.  
**Driving Instructions:** All incoming resources tie in at DP 70.

**7. Special Instructions:**  
 All work must be approved by Resource Advisors.  
 REAFS and READS will check in and out with DIVS. All natural and cultural resource concerns are flagged with orange/white candy-stripe flagging.  
  
 Mountain Medic Ambulance #1 located at DP 32.

<b>8. Communications</b>							
Name	Ch	Function	Rx Freq	Rx Tone	Tx Freq	Tx Tone	Notes
NIFC C31	B.3	COMMAND	173.0250N	T-9 100.0	163.8250N	T-9 100.0	Craggy Peak
NIFC C112	B.6	COMMAND	173.6000N	T-9 100.0	162.0750N	T-9 100.0	BONANZA KING
NIFC T1	B.7	TACTICAL	168.0500N	T-9 100.0	168.0500N	T-9 100.0	COFFEE, PACKERS GRP
A/G CMD	13	AIR TO GROUND	169.1500N		169.1500N		DIVS AND ABOVE
A/G TAC	14	AIR TO GROUND	162.8125N		162.8125N		AIR TO GROUND TACTICAL
CALCORD	15	MEDICAL	156.0750N	T-6 156.7	156.0750N	T-6 156.7	MEDEVAC COORDINATION
AIRGUARD	16	AIRGUARD	168.6250N		168.6250N	T-1 110.9	tone on transmit only - URGENT AIRCRAFT CONTACT

**9. Prepared by: Name:** Frank Henderson PSC

# ASSIGNMENT LIST (ICS 204 WF)

CONTROLLED UNCLASSIFIED INFORMATION//BASIC

<b>1. Incident Name:</b> <b>RIVER COMPLEX</b>	<b>2. Operational Period:</b> Date From: 10/15/21    Date To: 10/16/21 Time From: 0700            Time To: 0700	<b>3. Division</b> <b>CRONAN REPAIR GROUP</b>
--	---	--

<b>4. Operations Personnel:</b>		<b>Page 1 of 1</b>
Operations Section Chief: <b>Kelly Harper</b>	Night Ops:	
Branch Director:	Branch Safety:	
Division/Group Supervisor: <b>Dave Barnett LWD: 10/16</b>	Air Attack:	

<b>5. Resources Assigned:</b>		** Asterisks Denote 24 Hour Resources **					Hours	Reporting Location
Resource Identifier	Request #	LWD	Leader	Personnel				
HC2IA PVT-GRAYBACK 8B	C-277	10/17	CHRIS UNIACK	20		0700-1900	ETNA ICP	
HC2 PACIFIC OASIS CREW 2	C-289	10/22	JAMAL KWIATKOWSKI	20		0700-1900	ETNA ICP	
ENG3 KNF E-357	E-808	10/25	PAUL BUTCHER	5		0700-1900	ETNA ICP	
DOZ2-PVT-MOBLEY	E-182	10/28	CODY DONAHUE	2		0700-1900	ETNA ICP	
DOZ2 PVT-CRAIG MOUNTAIN	E-315	10/17	KYLE ALBRIGHT	2		0700-1900	ETNA ICP	
DOZ2 PVT-BLACK OPERATIONS	E-333	10/20	WILL BLACK	2		0700-1900	ETNA ICP	
DOZ3 PVT-MILE HIGH	E-92	10/16	TORIN THOMPSON	2		0700-1900	ETNA ICP	
EXCA PVT-MOBLEY CONSTRUCTION	E-776	10/16	DONNY MOBLEY	2		0700-1900	ETNA ICP	
EXCA PVT-BOB JOHNSON CONSTRUCTION	E-752	10/19	DAVE LAMARR	2		0700-1900	ETNA ICP	
EXCA PVT-BRAD INGRAM CONSTRUCTION	E-754	10/15	DRU GANBIN	2		0700-1900	ETNA ICP	
WTS1 PVT-CATTLELACK RANCH 131	E-825	10/25	JOHN SEMPLE	1		0700-1900	ETNA ICP	
WTS2 PVT-ALPINE	E-262	10/30	CONRAD BURBANK	1		0700-1900	ETNA ICP	
TFLD (T) BUCHTER	E-808	10/25	PAUL BUTCHER	1		0700-1900	ETNA ICP	
HEQB ROGERS	O-1652	10/16	DAVE ROGERS	1		0700-1900	ETNA ICP	
REAF KITTLE	O-1694	10/18	MICAH KITTLE	1		0700-1900	ETNA ICP	
EMPF CLOCK	O-1681	10/20	TYRELL CLOCK	1		0700-1900	ETNA ICP	

**6. Work Assignments:**  
 Implement suppression repair according to repair plan guidelines.  
 Coordinated activities with assigned TFLD/HEQB.  
 Suppression repair will be completed to resource advisors specifications.

**7. Special Instructions:**  
 All equipment will go through Etna.  
 Pilot vehicle required for one lane sections and sharp turns. Steep and narrow roads with cattle throughout directly on road.  
 Use caution and very slow speeds in Sawyers Bar with very narrow section between two buildings.  
**Driving Instructions from Etna:** Sawyers Bar Rd west to DP 10. (31 miles from ICP)  
 Mountain Medics Ambulance #2 located at DP10.

<b>8. Communications</b>							
Name	Ch	Function	Rx Freq	Rx Tone	Tx Freq	Tx Tone	Notes
NIFC C1	3	COMMAND	170.9750N	T-9 100.0	168.7000N	T-9 100.0	EDDY GULCH LOOKOUT
NIFC C85	6	COMMAND	173.1375N	T-9 100.0	162.5875N	T-9 100.0	BLUE RIDGE LOOKOUT
NIFC T7	12	TACTICAL	168.2500N	T-9 100.0	168.2500N	T-9 100.0	CRONAN
A/G CMD	13	AIR TO GROUND	169.1500N		169.1500N		DIVS AND ABOVE
A/G TAC	14	AIR TO GROUND	162.8125N		162.8125N		AIR TO GROUND TACTICAL
CALCORD	15	MEDICAL	156.0750N	T-6 156.7	156.0750N	T-6 156.7	MEDEVAC COORDINATION
AIRGUARD	16	AIRGUARD	168.6250N		168.6250N	T-1 110.9	STONE ON TRANSMIT ONLY - URGENT AIRCRAFT CONTACT

<b>9. Prepared by: Name:</b> Frank Henderson	PSC
<b>ICS 204</b>	<b>Personnel Count:</b> 20
Date/Time: 10/14/2021	2200

## ASSIGNMENT LIST (ICS 204 WF)

CONTROLLED UNCLASSIFIED INFORMATION//BASIC

<b>1. Incident Name:</b> <b>RIVER COMPLEX</b>		<b>2. Operational Period:</b> Date From: 10/15/21    Date To: 10/16/21 Time From: 0700    Time To: 0700				<b>3. Division</b> <b>ROAD HAZARD REPAIR GROUP</b>	
<b>4. Operations Personnel:</b>		Page 1 of 1					
Operations Section Chief: <b>Kelly Harper</b>		Branch Director:		Night Ops:			
Division/Group Supervisor: <b>Zeke Jones LWD: 10/21</b>				Branch Safety:			
				Air Attack:			
<b>5. Resources Assigned:      ** Asterisks Denote 24 Hour Resources **</b>							
Resource Identifier	Request #	LWD	Leader	Personnel	Hours	Reporting Location	
HC2IA PVT-FIRESTORM NCC19	C-51	10/16	GRAHAM LOWE	20	0700-1900	ETNA ICP	
PROCESSOR JOHNSONS	E-799	10/21	ERIC COUSINEAU	1	0700-1900	ETNA ICP	
PROCESSOR CATE LAND	E-800	10/25	KELBY CATES	2	0700-1900	ETNA ICP	
FEL1 PVT-STATEWIDE CONTRACT SERVICE	E-798	10/23	CEDRIC HAYDEN	1	0700-1900	ETNA ICP	
LDFR WYEAST FORESTRY	E-802	10/22	BRAD NICKLAUS	1	0700-1900	ETNA ICP	
LDFR ROSE LOGGING E-803	E-803	10/28	JUSTIN RAINWATER	2	0700-1900	ETNA ICP	
LDFR ROSE LOGGING E-804	E-804	10/28	JEREMY DEGROOT	2	0700-1900	ETNA ICP	
FMOD PVT-MOEN TIMBER	O-116	10/18	DARWIN SAXON	2	0700-1900	ETNA ICP	
FFT1 BENNETT	O-1706	10/24	MIKE BENNETT	1	0700-1900	ETNA ICP	
FFT1 COLBURN	O-1708	10/21	JAMES COLBURN	1	0700-1900	ETNA ICP	
FFT2 GREENHALGH	O-1707	10/21	BRENT GREENHALGH	1	0700-1900	ETNA ICP	
FFT2 BEALL	O-1753	10/26	DANIEL BEALL	1	0700-1900	ETNA ICP	
FFT2 ORTIZ	O-1754	10/26	MALIA ORTIZ	1	0700-1900	ETNA ICP	
REAF MAXWELL	O-1683	10/16	JAMES MAXWELL	1	0700-1900	ETNA ICP	
<b>6. Work Assignments:</b> Felling, bucking, and decking roadside hazard trees on high use roads that are part of maintenance levels 2-5 east of blue jay ridge in division M. Roads will be cleared of all hazards. All activities will be coordinated with resources advisors.							
<b>7. Special Instructions:</b> All work must be approved by Resource Advisors. REAFS and READS will check in and out with DIVS. All natural and cultural resource concerns are flagged with orange/white candy-stripe flagging. Potential delays on 39N10, 39N63, and 40N17 rds. 40N17 Rd will be blocked for large portions of the day.							
<b>8. Communications</b>							
Name	Ch	Function	Rx Freq	Rx Tone	Tx Freq	Tx Tone	Notes
NIFC C1	B.1	COMMAND	170.9750N	T-9 100.0	168.7000N	T-9 100.0	EDDY GULCH LOOKOUT
NIFC C11	B.2	COMMAND	170.6875N	T-9 100.0	166.5750N	T-9 100.0	ABOVE CECILVILLE
NIFC C86	B.4	COMMAND	166.1250N	T-9 100.0	162.1750N	T-9 100.0	PACKERS PEAK
NIFC T5	A.10	TACTICAL	166.7250N	T-9 100.0	166.7250N	T-9 100.0	ROADSIDE HAZARD
A/G CMD	13	AIR TO GROUND	169.1500N		169.1500N		DIVS AND ABOVE
A/G TAC	14	AIR TO GROUND	162.8125N		162.8125N		AIR TO GROUND TACTICAL
CALCORD	15	MEDICAL	156.0750N	T-6 156.7	156.0750N	T-6 156.7	MEDEVAC COORDINATION
AIRGUARD	16	AIRGUARD	168.6250N		168.6250N	T-1 110.9	TONE ON TRANSMIT ONLY - URGENT AIRCRAFT CONTACT
<b>9. Prepared by: Name:</b> Frank Henderson				PSC			
<b>ICS 204</b>		Date/Time: 10/14/2021 2200		Personnel Count: 17			

## ASSIGNMENT LIST (ICS 204 WF)

CONTROLLED UNCLASSIFIED INFORMATION//BASIC

<b>1. Incident Name:</b>	<b>2. Operational Period:</b>	<b>3. Division</b>
<b>RIVER COMPLEX</b>	Date From: 10/15/21    Date To: 10/16/21 Time From: 0700    Time To: 0700	<b>PACKERS GROUP</b>
<b>4. Operations Personnel:</b>		<b>Page 1 of 1</b>

Operations Section Chief: <b>Kelly Harper</b> Branch Director:	Night Ops: Branch Safety:
Division/Group Supervisor: <b>Sara Martinez LWD: 10/18 / Robert Bergschneider(T) LWD: 10/18</b> Air Attack:	

5. Resources Assigned:    ** Asterisks Denote 24 Hour Resources **						
Resource Identifier	Request #	LWD	Leader	Personnel	Hours	Reporting Location
<b>WFM2 USFS-MAMMOTH</b>	<b>O-1690</b>	<b>10/18</b>	<b>SARA MARTINEZ</b>	10	<b>0700-1900</b>	<b>CARTER SUMMIT</b>
<b>PACK STRING 1</b>	<b>E-758</b>	<b>10/25</b>	<b>KATY BARTZOKIS</b>	2	<b>0700-1900</b>	<b>CARTER SUMMIT</b>
<b>EMPF BORUM</b>	<b>O-1678</b>	<b>10/16</b>	<b>CONNOR BORUM</b>	1	<b>0700-1900</b>	<b>CARTER SUMMIT</b>

**6. Work Assignments:**  
 Remove structure wrap from infrastructure in remote areas located in the southwest portion of the fire.  
 Mitigate any potential environmental concerns.  
 Coordinate with Resource Advisors and the local unit to prioritize missions.

**7. Special Instructions:**  
 Utilize SHF Pack Train to ingress/egress remote work assignments. Coordinate missions with the Operations section to ensure accountability.

8. Communications							
Name	Ch	Function	Rx Freq	Rx Tone	Tx Freq	Tx Tone	Notes
NIFC C31	B.3	COMMAND	173.0250N	T-9 100.0	163.8250N	T-9 100.0	CRAGGY PEAK
NIFC C86	B.4	COMMAND	166.1250N	T-9 100.0	162.1750N	T-9 100.0	PACKERS PEAK
NIFC C97	B.5	COMMAND	168.1375N	T-9 100.0	165.1500N	T-9 100.0	ROZ POINT
NIFC C112	B.6	COMMAND	173.6000N	T-9 100.0	162.0750N	T-9 100.0	BONANZA KING
NIFC T1	B.7	TACTICAL	168.0500N	T-9 100.0	168.0500N	T-9 100.0	COFFEE, PACKERS GRP
A/G CMD	13	AIR TO GROUND	169.1500N		169.1500N		DIVS AND ABOVE
A/G TAC	14	AIR TO GROUND	162.8125N		162.8125N		AIR TO GROUND TACTICAL
CALCORD	15	MEDICAL	156.0750N	T-6 156.7	156.0750N	T-6 156.7	MEDEVAC COORDINATION
AIRGUARD	16	AIRGUARD	168.6250N		168.6250N	T-1 110.9	PHONE ON TRANSMIT ONLY - URGENT AIRCRAFT CONTACT

**9. Prepared by: Name:** Frank Henderson                                  PSC







**ICS 205 - INCIDENT RADIO COMMUNICATIONS PLAN**

**RADIO CLONE GROUP A v5**

1. Incident Name: **RIVER COMPLEX CLONE GROUP A**

2. Date/Time Prepared: 10/14/2021 1930

3. Operational Period: Date From: 10/15/21 Date To: 10/16/21  
Time From: 0700 Time To: 0700

**4. Communications**

Ch#	Function	Name	Assigned To	Rx Freq	Rx Tone	Tx Freq	Tx Tone	Notes
1	COMMAND	SALMON	IA USE	172.4000N		164.1250N	T-6 156.7	KNF
2	COMMAND	RIVER	IA USE	172.2500N		165.0750N	T-7 167.9	KNF
3	COMMAND	NIFC C1	ALL RESOURCES	170.9750N	T-9 100.0	168.7000N	T-9 100.0	EDDY GULCH LOOKOUT
4	COMMAND	NIFC C11	ALL RESOURCES	170.6875N	T-9 100.0	166.5750N	T-9 100.0	ABOVE CECILVILLE
5	COMMAND	NIFC C31	ALL RESOURCES	173.0250N	T-9 100.0	163.8250N	T-9 100.0	CRAGGY PEAK
6	COMMAND	NIFC C85	CRONAN	173.1375N	T-9 100.0	162.5875N	T-9 100.0	BLUE RIDGE LOOKOUT
7	COMMAND	NIFC C86	ALL RESOURCES	166.1250N	T-9 100.0	162.1750N	T-9 100.0	PACKERS PEAK
8	TACTICAL	NIFC T1	COFFEE	168.0500N	T-9 100.0	168.0500N	T-9 100.0	COFFEE GROUP
9	TACTICAL	NIFC T3	SUPPRESSION	168.6000N	T-9 100.0	168.6000N	T-9 100.0	SUPPRESSION GROUP
10	TACTICAL	NIFC T5	ROADSIDE GRP	166.7250N	T-9 100.0	166.7250N	T-9 100.0	ROADSIDE HAZARD GROUP
11	TACTICAL	NIFC T6	CALLAHAN	166.7750N	T-9 100.0	166.7750N	T-9 100.0	CALLAHAN
12	TACTICAL	NIFC T7	CRONAN	168.2500N	T-9 100.0	168.2500N	T-9 100.0	CRONAN
13	AIR TO GROUND	A/G CMD	DIVS AND ABOVE	169.1500N		169.1500N		DIVS AND ABOVE
14	AIR TO GROUND	A/G TAC	ALL RESOURCES	162.8125N		162.8125N		AIR TO GROUND TACTICAL
15	MEDICAL	CALCORD	ALL RESOURCES	156.0750N	T-6 156.7	156.0750N	T-6 156.7	MEDEVAC COORDINATION
16	AIRGUARD	AIRGUARD	ALL RESOURCES	168.6250N		168.6250N	T-1 110.9	TONE ON TRANSMIT ONLY - URGENT AIRCRAFT CONTACT
17								

**5. Special Instructions**

Communications Unit Phone Number: 530-467-1509 24-HOUR

6. Prepared by (Communications Unit Leader): Name: Paul Noa

Signature: \_\_\_\_\_ Date/Time: 10/14/2021 1930

ICS 205 - CONTROLLED UNCLASSIFIED INFORMATION/BASIC

**ICS 205 - INCIDENT RADIO COMMUNICATIONS PLAN**

**RADIO CLONE GROUP B v5**

1. Incident Name: **RIVER COMPLEX CLONE GROUP B**

2. Date/Time Prepared: 10/14/2021 1930

3. Operational Period: Date From: 10/15/21 Date To: 10/16/21  
Time From: 0700 Time To: 0700

**4. Communications**

Ch#	Function	Name	Assigned To	Rx Freq	Rx Tone	Tx Freq	Tx Tone	Notes
1	COMMAND	NIFC C1	ALL RESOURCES	170.9750N	T-9 100.0	168.7000N	T-9 100.0	EDDY GULCH LOOKOUT
2	COMMAND	NIFC C11	ALL RESOURCES	170.6875N	T-9 100.0	166.5750N	T-9 100.0	ABOVE CECILVILLE
3	COMMAND	NIFC C31	ALL RESOURCES	173.0250N	T-9 100.0	163.8250N	T-9 100.0	CRAGGY PEAK
4	COMMAND	NIFC C86	ALL RESOURCES	168.1250N	T-9 100.0	162.1750N	T-9 100.0	PACKERS PEAK
5	COMMAND	NIFC C97	ALL RESOURCES	168.1375N	T-9 100.0	165.1500N	T-9 100.0	ROZ POINT
6	COMMAND	NIFC C112	ALL RESOURCES	173.6000N	T-9 100.0	162.0750N	T-9 100.0	BONANZA KING
7	TACTICAL	NIFC T1	COFFEE	168.0500N	T-9 100.0	168.0500N	T-9 100.0	COFFEE, PACKERS GRP
8	TACTICAL	NIFC T3	SUPPRESSION	168.6000N	T-9 100.0	168.6000N	T-9 100.0	SUPPRESSION
9	TACTICAL	NIFC T5	ROADSIDE GRP	166.7250N	T-9 100.0	166.7250N	T-9 100.0	ROADSIDE HAZARD GROUP
10	TACTICAL	R5 T4	BEAR COUNTRY	166.5500N	T-9 100.0	166.5500N	T-9 100.0	BEAR COUNTRY
11	TACTICAL	R5 T5	DIVISION Q	167.1125N	T-9 100.0	167.1125N	T-9 100.0	
12	TACTICAL	R5 T6	DIVISION R	168.2375N	T-9 100.0	168.2375N	T-9 100.0	
13	AIR TO GROUND	A/G CMD	DIVS AND ABOVE	169.1500N		169.1500N		DIVS AND ABOVE
14	AIR TO GROUND	A/G TAC	ALL RESOURCES	162.8125N		162.8125N		
15	MEDICAL	CALCORD	ALL RESOURCES	156.0750N	T-6 156.7	156.0750N	T-6 156.7	MEDEVAC COORDINATION
16	AIRGUARD	AIRGUARD	ALL RESOURCES	168.6250N		168.6250N	T-1 110.9	TONE ON TRANSMIT ONLY - URGENT AIRCRAFT CONTACT
17								

**5. Special Instructions**

Communications Unit Phone Number: 530-467-1509 24-HOUR

6. Prepared by (Communications Unit Leader): Name: Paul Noa

Signature: \_\_\_\_\_ Date/Time: 10/14/2021 1930

ICS 205 - CONTROLLED UNCLASSIFIED INFORMATION/BASIC

**INITIAL ATTACK CLONE GROUP (C)**

**ICS 205 - INCIDENT RADIO COMMUNICATIONS PLAN**

1. Incident Name: **RIVER COMPLEX**  
**INITIAL ATTACK CLONE GROUP (C)**

2. Date/Time Prepared: 10/14/2021 1930  
 Date: 10/14/2021 1930  
 Time: 1930

3. Operational Period:  
 Date From: 10/15/21 Date To: 10/16/21  
 Time From: 0700 Time To: 0700

4. Communications

Ch#	Function	Name	Assigned To	Rx Freq	Rx Tone	Tx Freq	Tx Tone	Notes
1	COMMAND	SALMON	ALL RESOURCES	172.4000N		164.1250N	T-6 156.7	KNF
2	COMMAND	RIVER	ALL RESOURCES	172.2500N		165.0750N	T-7 167.9	KNF
3	IA SKU	SKU	ALL RESOURCES	151.3250		159.3600	T-1 110.9	SKU LOCAL
4	IA SHU	SHU	ALL RESOURCES	151.1600		159.2700	T-1 110.9	SHU LOCAL
5	IA SHF	SHF	ALL RESOURCES	171.5750		165.0125	T-1 110.9	BONANZA KING
6								
7								
8	IA SKU	GDF TAC 9	ALL RESOURCES	151.3850	T-16 192.8	151.3850	T-16 192.8	CDF TAC 9
9	IA SHU	CDF TAC 11	ALL RESOURCES	151.4450	T-16 192.8	151.4450	T-16 192.8	CDF TAC 11
10	IA SHF	NIFC TAC 2	ALL RESOURCES	168.2000		168.2000		NIFC TAC 2 - SHF IA TAC
11	AIR TO GROUND	CDF A/G 1	ALL RESOURCES	151.2200	T-16 192.8	151.2200	T-16 192.8	
12	AIR TO GROUND	CDF A/G 2	ALL RESOURCES	159.2625	T-16 192.8	159.2625	T-16 192.8	
13	AIR TO GROUND	A/G CMD	DIVS AND ABOVE	169.1500N		169.1500N		DIVS AND ABOVE
14	AIR TO GROUND	A/G TAC	ALL RESOURCES	162.8125N		162.8125N		
15	MEDICAL	CALCORD	ALL RESOURCES	156.0750N	T-6 156.7	156.0750N	T-6 156.7	MEDEVAC COORDINATION
16	AIRGUARD	AIRGUARD	ALL RESOURCES	168.6250N		168.6250N	T-1 110.9	TONE ON TRANSMIT ONLY - URGENT AIRCRAFT CONTACT
17								

5. Special Instructions

Communications Unit Phone Number: 530-467-1509 24-HOUR

6. Prepared by (Communications Unit Leader): Name: Paul Noa  
 Signature: \_\_\_\_\_  
 Date/Time: 10/14/2021 1930

ICS 205 - CONTROLLED UNCLASSIFIED INFORMATION/BASIC

# Training Message

## TRAINEES:

In order to receive documented credit for your training assignment – you must close out with the Training Specialist before you Demob. When as much work (as possible) has been completed in your PTB for this incident – Conduct the “close-out” process w the TNSP to save you time at DMOB

**\*\* (THIS INCLUDES ASSIGNMENTS ENDING WITH TRANSITION) \*\***

Submit/Upload the following during the “exit interview”

*If your trainer has left I need your new Trainer info Name/Home Unit/contact phone and email*

*You must submit copies from each trainer of the following:*

- A completed and signed ICS 225 or 226 Performance Evaluation
  - A completed Exit Interview Form
  - A completed Task Book Evaluation

Chad Englert - TNSP

[Englertc@cityofmerced.org](mailto:Englertc@cityofmerced.org)

209-614-9031

Training Check-In



Training Exit Interview



**TENTATIVE DEMOB**  
**River Complex US-CA-KNF-006385**

If you need to do any crew swaps, crew extensions, or R&Rs, please come to the Demob trailer to fill out the appropriate form. All forms need to be signed by your division supervisor AND home unit supervisor before it will be approved.

**TENTATIVE DEMOB**  
**River Complex US-CA-KNF-006385**

10/15/2021

<u>OVERHEAD</u>			
O-1621	MOTA, RAMON	0745	HEQB
O-1622	HILL, STAN	0800	TFLD
<u>EQUIPMENT</u>			
E-780	HIGH POWER	0730	EXCA
E-784	WALBERG INC.	0745	EXCA

10/16/2021

<u>OVERHEAD</u>			
O-1611	REINMAN, JOSEPH	0730	REAF
O-1647	KIMPLING, PAUL MYCHAL	0745	FACL
O-1750	ECHEVERRIA, ANNAMARIA	0800	SOF2
<u>EQUIPMENT</u>			
E-138	JOHNSON, MATTHEWS	0730	PU
E-182	MOBLEY CONSTRUCTION	0745	DOZ2
E-762	TRANSPORTATION STAKESIDE- LANDRUM, RICHARD	0815	STK
E-783	RICHARD MCLERAN TRUCKING	0830	EXCA

10/17/2021

<u>OVERHEAD</u>			
O-1521	ROSLOSNIK, ERIC GLEN	0730	PSCT
O-1522	TUMIDANSKI, MIKE LEE	0745	PSCT
O-1649	BARNETT, DAVID RUSS	0800	DIVS
O-1652	ROGERS, DAVE	0815	HEQB
O-1683	MAXWELL, JAMES SCOTT	0830	REAF
O-1678	BORUM, CONNOR	0845	EMPF
O-1667	DAVIS, JEFF	0900	INCM
O-1648	ALICEA, DAVID	0915	LSC2
<u>EQUIPMENT</u>			
E-776	MOBLEY CONSTRUCTION	0730	EXCA
E-37	MUD LAKE OIL INC	0745	FT2
E-506	M. PETERS	0800	GRD
<u>CREW</u>			
C-51	FIRESTORM NCC19	0730	HC2I
C-292	GRAYBACK FORESTRY, INC. 7B	0800	HC2I

Resources requiring air travel need to submit a flight request using the QR code on the front of the IAP at least 72 hours prior to demobilization date.

\*\*\* = air travel

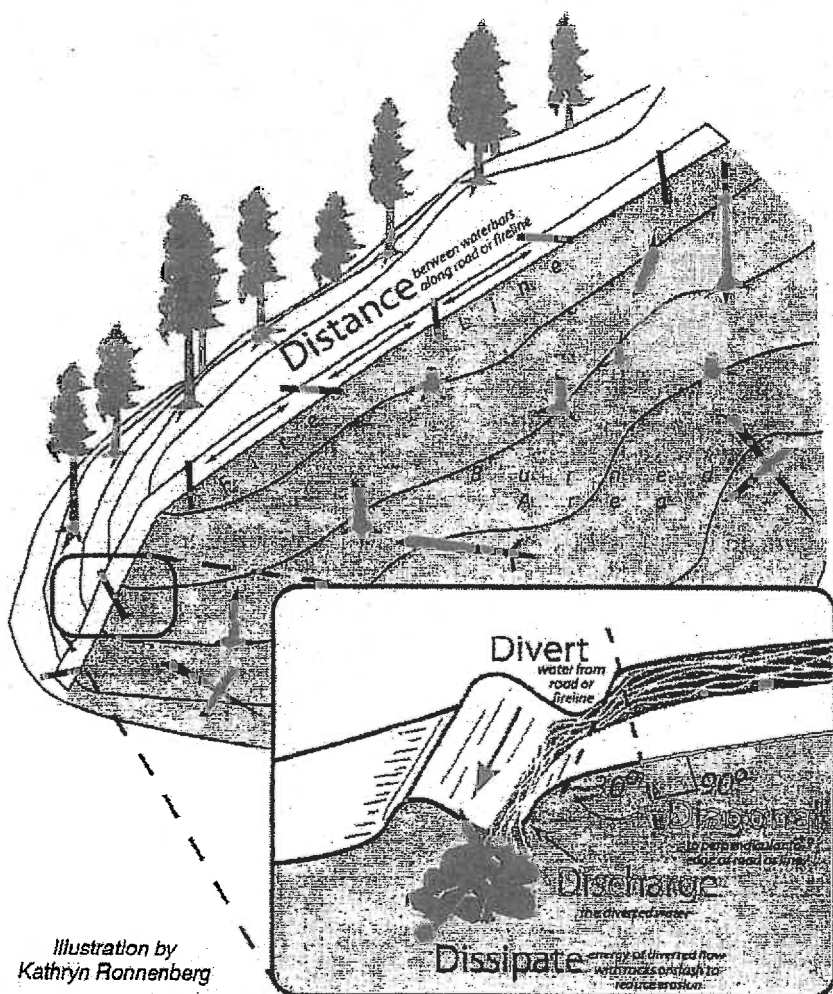
## Effective Waterbars

When locating and building water bars, place them the right **distance** apart, at a **diagonal** to the fire line, so that they **divert**, then **discharge**, then **dissipate** the energy of the flowing water. Be sure to make them deep enough so they'll be durable, and that soil does **not block** the water bar outlet.

### Recommended spacing for waterbars on fire lines.

Fire line slope %	Degrees	Maximum Distance Apart (feet)
1-5	.....flat-3°.....	200
6-20	.....4-11°.....	125
21-40	.....11-22°.....	60
41-60	.....23-31°.....	40
>60	.....	25

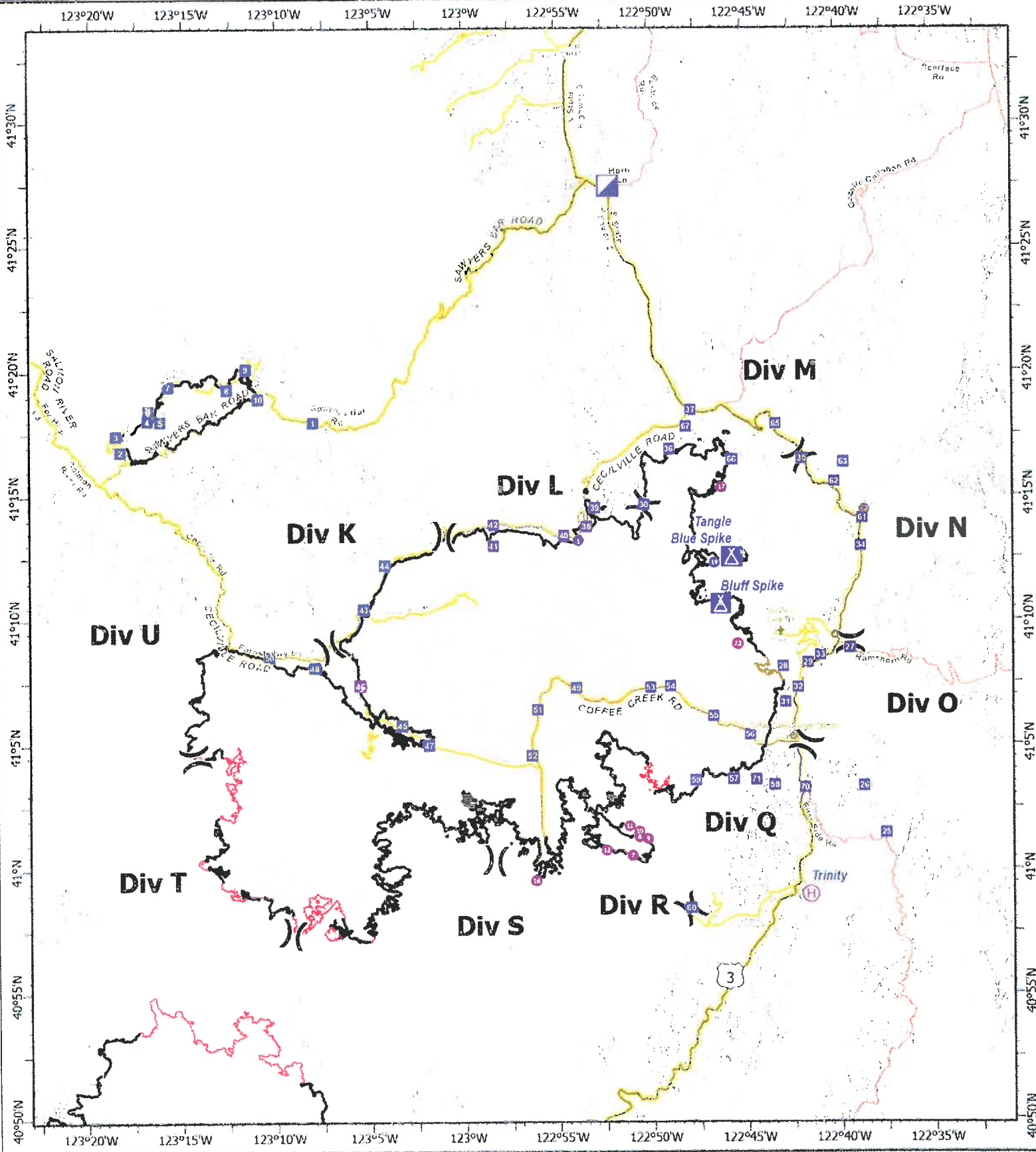
*Waterbars should be at least two pulaskis (4-6 inches) wide and 12-24 inches high for handlines. For dozer lines, waterbars may be 2-3' high and the 5-6' across. They should survive the heaviest rain storm...think 6" rain in 36 hours.*



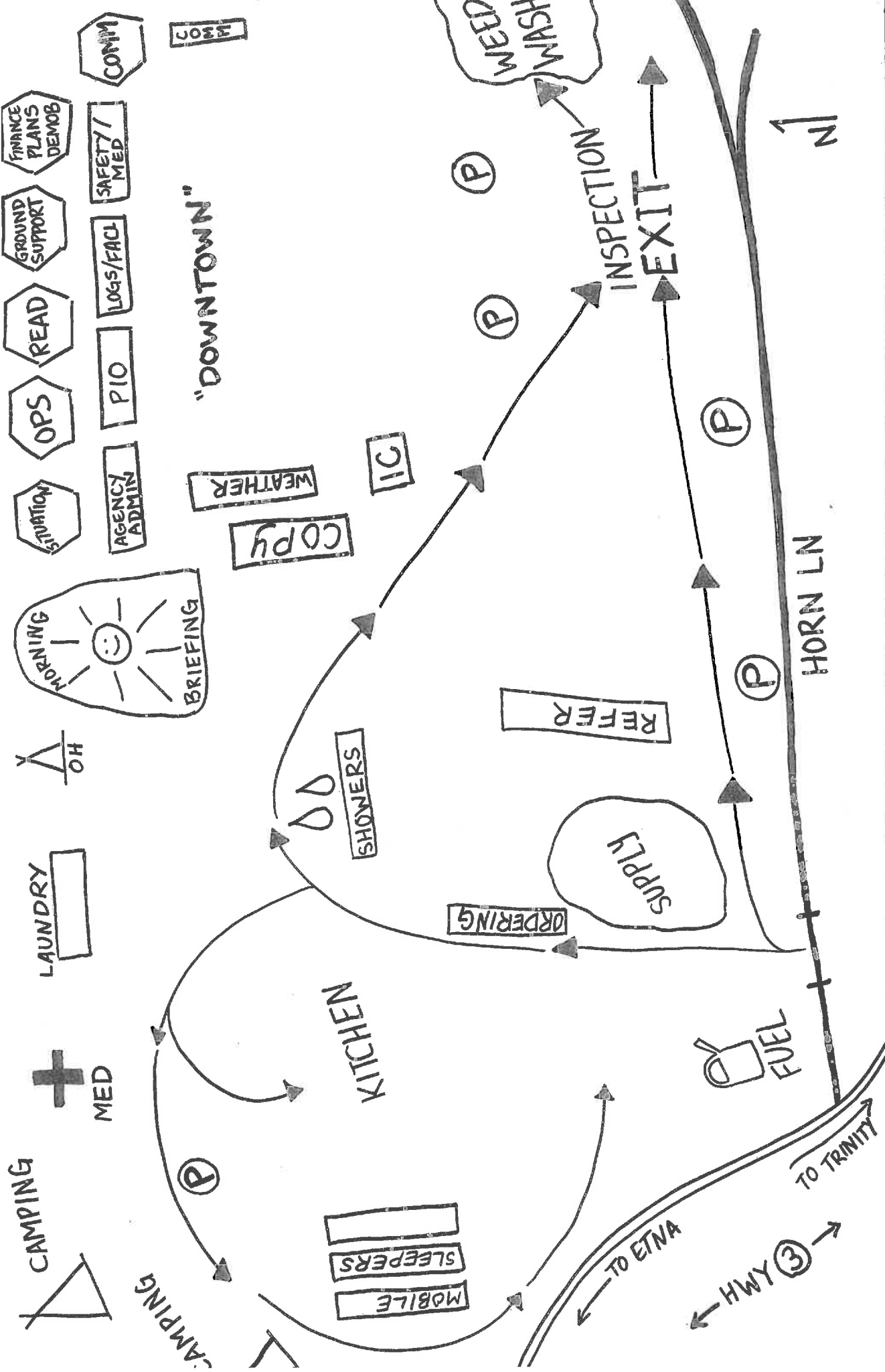
*Illustration by Kathryn Ronnenberg*



# Transportation



<p><b>River Complex</b></p> <p>CA-KNF-006385</p> <p>198901 acres IR updated 10/07/2021</p>	<ul style="list-style-type: none"> <li><span style="color: purple;">●</span> Helispot</li> <li><span style="border: 1px solid purple; border-radius: 50%; padding: 2px;">H</span> Helibase</li> <li><span style="background-color: blue; color: white; padding: 2px;">ICP</span> Incident Command Post</li> <li><span style="background-color: blue; color: white; padding: 2px;">DP</span> Drop Point</li> <li><span style="border: 1px solid blue; padding: 2px;">C</span> Camp</li> </ul>	<ul style="list-style-type: none"> <li><span style="font-size: 2em;">X</span> Division Break</li> <li>Wildfire Daily Perimeter</li> <li><span style="border-bottom: 2px solid yellow; width: 20px; display: inline-block;"></span> Highway</li> <li><span style="border-bottom: 2px solid orange; width: 20px; display: inline-block;"></span> Main Route</li> <li><span style="border-bottom: 2px solid red; width: 20px; display: inline-block;"></span> Local</li> </ul>	<div style="display: flex; justify-content: space-around; align-items: center;"> </div> <div style="text-align: right; margin-top: 10px;"> <p>Mile</p> <p>Datum: North American 1983</p> </div>
--	--	---	---



**RIVER COMPLEX**  
 CP MAP CA-KNF-006385 P5N7CM

**CAMP HOURS:**  
 0530-0900 BREAKFAST  
 1800-2100 DINNER  
 0445-2145 REFER  
 0600-2100 SUPPLY  
 0600-2100 GROUND SUPPORT

0500-1200 SHOWER  
 1400-2300

**HEALTH AND SAFETY MESSAGE**

***SAFETY*** starts with ***YOU***

We are **ALL** accountable for **SAFE** behaviors

INCIDENT: River Complex

DATE: 10/15/2021

**COMPLACENCY**

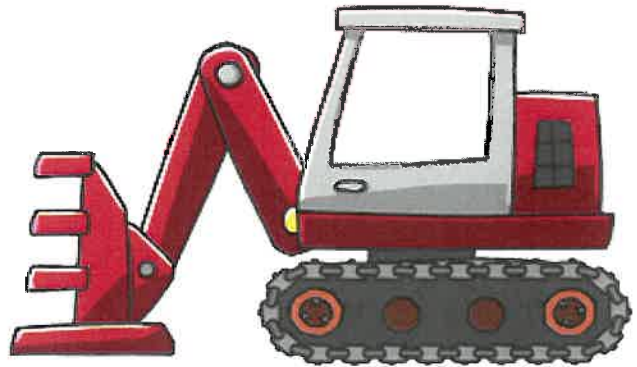
Defined: A feeling of being satisfied and not wanting to make it better. Complacency causes a sense of numbness to hazards. Your goal is to **NEVER** be satisfied with your safety.

**Continue to ask yourself these questions:**

- What am I working with?
- What will I be doing?
- Where will I be going?
- What could go wrong?
- Am I a little too comfortable?
- **Look up, Look down, Look all around**
- **to maintain your situational awareness.**

**Working with Heavy Equipment**

- When working around heavy equipment stay at least 100 feet in front and 50 feet behind the equipment.
- Never approach equipment until you have eye contact with the operator, all implements have been lowered to the ground, and equipment is idled down.
- Avoid working downhill from equipment so you don't get hit with rolling material.
- Establish visual and radio communication methods prior to engaging.



**Safety Officer:**  
Annamaria Echeverria, SOF2

**Keep Up the Good Work  
and Look Out for each other**

# USFS

**COVID mitigation efforts are imperative in order for us to complete our mission!**

## PREVENTION AND MANAGEMENT

Monitor yourself and your crew

Wear face coverings

Physical distance

Clean and Disinfect

Isolate when ill

## REPORTING GUIDLINES

In the event of a symptomatic person or persons, isolate those that are symptomatic, then contact the Incident Medical Unit Leader immediately.

### **Incident Medical Unit Leader**

Primary Contact: (702) 480-2352

Secondary Contact: (530) 205-6703

## COVID SYMPTOMS

- Cough more than expected?
- Shortness of breath or difficulty breathing?
- Fever? Chills?
- Muscle pain, outside of normal for firefighting?
- Sore throat?
- Loss of taste or smell?
- Headache, Fatigue, Nausea or Diarrhea?
- Congestion or runny nose?

Keep yourself healthy

Keep others Healthy

Safeguard our biggest asset...  
YOU!

REPORT CONCERNS  
THROUGH YOUR CHAIN  
OF COMMAND



**Test early Test often!!**

**USDA Forest Service**



**Free COVID-19 tests** are available for  
wildland fire personnel!!!

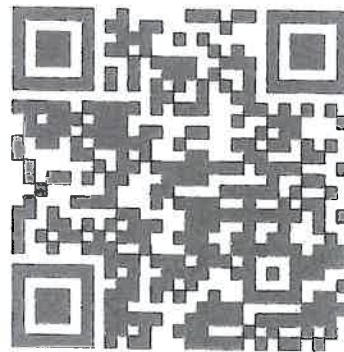
Not just for Forest Service personnel! Anyone associated with wildland fire work is welcome.

To get tested for free, go to the

**Klamath National Forest Headquarters (aka "Klamath  
Supervisor's Office")**

**1711 South Main St, Yreka, CA 96097 - 6:30 AM to  
8:30 PM every day!**

Please use the QR code to the right to register (either before or on-site) for the test administered by Emergency Response Logistics, Inc. That QR code will take you to a form.



**In the interest of protecting each other and our families, we encourage testing early and often!** Please contact [testing.klamath1@gmail.com](mailto:testing.klamath1@gmail.com) if you have questions or comments.

All USFS employees and non-USFS personnel assigned to fires in the Klamath NF area or passing through Yreka en route to or from fire assignments are encouraged to stop to be tested prior to reporting to the assignment or traveling to another site or home.

*A core value of the Forest Service is safety. This testing availability is an additional step in safeguarding human life and protecting our most valuable resources. Our Code and Commitments include being trusted to "do right" by each other and the communities we serve.*





<b>MEDICAL PLAN - ICS 206</b>		<b>1. INCIDENT NAME: River Complex</b>		<b>2. DATE PREPARED: 10/14/21</b>		<b>3. TIME PREPARED: 1600</b>		<b>4. OP. PERIOD: 10/15/21 - 10/16/21 0700-0700</b>			
<b>5. INCIDENT MEDCAL AID STATIONS</b>											
MEDICAL AID STATIONS				LOCATION				R.N. & EMT			
Mountain Medics - Medical Support Trailer				ICP - Etna, CA				YES	NO		
X											
<b>6.a. AIR AMBULANCES</b>											
NAME			LOCATION		CONTACT			PARAMEDICS			
								YES	NO		
Air Ambulance (Area Rotation) / Type 3			Medford, OR		River Communications			X			
Cal Fire 102 / Type 2			Kneeland, CA		River Communications				X		
CHP (Daytime only Hoist) / Type 3			Redding, CA		River Communications			X			
Coast Guard (Night Hoist) / Type 2			McKinleyville, CA		River Communications			X			
<b>6.b. GROUND AMBULANCES &amp; REMS</b>											
NAME				LOCATION				PARAMEDICS			
								YES	NO		
Mountain Medics AMB # 1				DP 32				X			
Mountain Medics AMB # 2				DP 10				X			
RENO REMS				DP 37				X			
<b>7. HOSPITALS _ GPS DATUM - WGS 84</b>											
NAME		ADDRESS		TRAVEL TIME		PHONE LAT, LONG		HELIPAD		BURN CENTER	
				AIR	GRND			YES	NO	YES	NO
Fairchild Medical Center (Level 4 Trauma Center)		444 Bruce St. Yreka, CA		25min.	2 hr.	530-842-4121 Lat: 41 43.20 Long: 122 38.70		X			X
Rogue Regional Medical (Level 2 Trauma Center)		2825 E Barnett Rd. Medford, OR		1 hr.	3 hrs	541-789-7000 Lat: 42 19.10 Long: 122 49.50		X OR99			X
Mercy Medical Center (Level 2 Trauma Center)		2175 Rosaline Ave. Redding, CA		30 min.	3 hrs.	530-225-6000 Lat: 40 34.14 Long: 122 23.97		X 7CA3			X
UC Davis Medical Center (Level 1 Trauma & Burn)		2315 Stockton Blvd. Sacramento, CA		2 hr.	5.5 hrs.	916-734-3636 Lat: 38 33.20 Long: 121 27.28		X 3CLO		X	
<b>8. MEDICAL EMERGENCY PROCEDURES</b>											
<b><u>LINE "MEDICAL EMERGENCY" PLAN:</u></b>						<b><u>LINE "NON-EMERGENCY INCIDENT" PLAN:</u></b>					
<p><b>Crew Supervisor</b> to contact Division Supervisor/Operations with:</p> <ul style="list-style-type: none"> <li>• Patient Complaint, Condition and Location via Tactical or Command Frequency. <b>Priority 1/Red &amp; 2/Yellow</b> patients.</li> <li>• <u>Triggers</u> Incident within Incident (IWI)</li> </ul> <p><b>Division Supervisor</b> /*POC contacts River Communications:</p> <ul style="list-style-type: none"> <li>• Division Supervisor /*POC will run "<b>Medical-Emergency</b>" on Command Frequency.</li> <li>• <b>Division Supervisor</b> /*POC use <b>Medical Plan (ICS 206 WF)</b> worksheet in the IAP or IRPG.</li> <li>• Communications contacts Medical Unit Leader on the Command Frequency or cell phone 702-480-2352</li> </ul> <p><b>*POC (Point of Contact)</b></p>						<p><b>Crew Supervisor</b> to contact Division Supervisor with:</p> <ul style="list-style-type: none"> <li>• Patient Complaint, Condition and Location via Tactical or Command Frequency. <b>Priority 3/Green</b> patients.</li> <li>• <u>Does not</u> trigger Incident within Incident (IWI).</li> </ul> <p><b>Division Supervisor/POC</b> contacts River Communications</p> <ul style="list-style-type: none"> <li>• Division Supervisor or *POC will run "<b>Non-Emergency Incident</b>" on the Command Frequency.</li> <li>• Division Supervisor or *POC to use "<b>Medical Incident Report</b>" worksheet on back of this page or in IRPG.</li> <li>• Communications contacts Medical Unit Leader on the Command Frequency or cell phone 209-614-0709</li> </ul> <p><b><u>IN-CAMP – 24 HOUR MEDICAL</u></b></p> <p>Contact River Communications with: Patient Complaint, Condition, and Location via phone (510)507-5906 or Command Frequency</p>					
ICS 206		9. PREPARED BY: (Medical Unit Leader) Aric Seal MEDL (t)				10. REVIEWED BY: (IC) JB Clay IC (t)					

## MEDICAL PLAN (ICS 206 WF)

Controlled Unclassified Information//Basic

Medical Incident Report																													
<p><b>FOR A NON-EMERGENCY INCIDENT, WORK THROUGH CHAIN OF COMMAND TO REPORT AND TRANSPORT INJURED PERSONNEL AS NECESSARY.</b></p> <p><b>FOR A MEDICAL EMERGENCY: IDENTIFY ON SCENE INCIDENT COMMANDER BY NAME AND POSITION AND ANNOUNCE "MEDICAL EMERGENCY" TO INITIATE RESPONSE FROM IMT COMMUNICATIONS/DISPATCH.</b></p>																													
<p><b>Use the following items to communicate situation to communications/dispatch.</b></p>																													
<p><b>1. CONTACT COMMUNICATIONS / DISPATCH</b> (Verify correct frequency prior to starting report)  <i>Ex: "Communications, Div. Alpha, Stand-by for Emergency Traffic."</i></p> <p><b>2. INCIDENT STATUS:</b> Provide incident summary (including number of patients) and command structure.  <i>Ex: "Communications, I have a Red priority patient, unconscious, struck by a falling tree. Requesting air ambulance to Forest Road 1 at (Lat./Long.) This will be the Trout Meadow Medical. IC is TFLD Jones. EMT Smith is providing medical care."</i></p>																													
Severity of Emergency / Transport Priority	<input type="checkbox"/> <b>RED / PRIORITY 1</b> Life or limb threatening Injury or illness. Evacuation need is <b>IMMEDIATE</b> <i>Ex: Unconscious, difficulty breathing, bleeding severely, 2<sup>nd</sup> - 3<sup>rd</sup> burns more than 4 palm sizes, heat stroke, disoriented.</i> <input type="checkbox"/> <b>YELLOW / PRIORITY 2</b> Serious Injury or illness. Evacuation may be <b>DELAYED</b> if necessary. <i>Ex: Significant trauma, unable to walk, 2<sup>nd</sup> - 3<sup>rd</sup> burns not more than 1-3 palm sizes.</i> <input type="checkbox"/> <b>GREEN / PRIORITY 3</b> Minor Injury or illness. <b>Non-Emergency transport</b> <i>Ex: Sprains, strains, minor heat-related illness.</i>																												
Nature of Injury or Illness & Mechanism of Injury			<i>Brief Summary of Injury or Illness (Ex: Unconscious, Struck by Falling Tree)</i>																										
Transport Request			<i>Air Ambulance / Short Haul/Hoist Ground Ambulance / Other</i>																										
Patient Location			<i>Descriptive Location &amp; Lat. / Long. (WGS84)</i>																										
Incident Name			<i>Geographic Name + "Medical" (Ex: Trout Meadow Medical)</i>																										
On-Scene Incident Commander			<i>Name of on-scene IC of incident within an incident (Ex: TFLD Jones)</i>																										
Patient Care			<i>Name of Care Provider (Ex: EMT Smith)</i>																										
<p><b>3. INITIAL PATIENT ASSESSMENT:</b> Complete this section for each patient as applicable (start with the most severe patient)</p> <p>Patient Assessment: See IRPG page 106</p> <p>Treatment:</p>																													
<p><b>4. TRANSPORT PLAN:</b></p> <p>Evacuation Location (if different): (Descriptive Location (drop point, intersection, etc.) or Lat. / Long.) Patient's ETA to Evacuation Location:</p> <p>Hellspot / Extraction Site Size and Hazards:</p>																													
<p><b>5. ADDITIONAL RESOURCES / EQUIPMENT NEEDS:</b></p> <p><i>Example: Paramedic/EMT, Crews, Immobilization Devices, AED, Oxygen, Trauma Bag, IV/Fluid(s), Splints, Rope rescue, Wheeled litter, HAZMAT, Extrication</i></p>																													
<p><b>6. COMMUNICATIONS: Identify State Air/Ground EMS Frequencies and Hospital Contacts as applicable</b></p> <table border="1" style="width: 100%; border-collapse: collapse;"> <thead> <tr> <th>Function</th> <th>Channel Name/Number</th> <th>Receive (RX)</th> <th>Tone/NAC *</th> <th>Transmit (TX)</th> <th>Tone/NAC *</th> </tr> </thead> <tbody> <tr> <td>COMMAND</td> <td></td> <td></td> <td></td> <td></td> <td></td> </tr> <tr> <td>AIR-TO-GRND</td> <td></td> <td></td> <td></td> <td></td> <td></td> </tr> <tr> <td>TACTICAL</td> <td></td> <td></td> <td></td> <td></td> <td></td> </tr> </tbody> </table>						Function	Channel Name/Number	Receive (RX)	Tone/NAC *	Transmit (TX)	Tone/NAC *	COMMAND						AIR-TO-GRND						TACTICAL					
Function	Channel Name/Number	Receive (RX)	Tone/NAC *	Transmit (TX)	Tone/NAC *																								
COMMAND																													
AIR-TO-GRND																													
TACTICAL																													
<p><b>7. CONTINGENCY:</b> <u>Considerations:</u> If primary options fail, what actions can be implemented in conjunction with primary evacuation method? Be thinking ahead.</p>																													
<p><b>8. ADDITIONAL INFORMATION:</b> Updates/Changes, etc.</p>																													
<p><b>REMEMBER:</b> Confirm ETA's of resources ordered. Act according to your level of training. Be Alert. Keep Calm. Think Clearly. Act Decisively.</p>																													