

Friday

# RIVER COMPLEX

CA-KNF-006385 P5N7CM

## INCIDENT ACTION PLAN

Operational Period

09/24/2021 to 09/25/2021

0700-1900 hrs and 1900-0700 hrs



## WELCOME CIIMT 15



Fire Information  
 707-596-6075  
[2021.river@firenet.gov](mailto:2021.river@firenet.gov)

QR Code: IAPs, Maps, Check-in,  
 Trainee Forms, Misc. Incident  
 Documents, and Day Shift / Night  
 Shift Operational Briefings on Zoom

Friday

INCIDENT OBJECTIVES (ICS 202)	1. RIVER COMPLEX	9/22/2021	3. TIME: 1800
-------------------------------	------------------	-----------	------------------

4. OPERATIONAL PERIOD (DATE/TIME): 9/24/2021 to 9/25/2121, Day 0700-1900 / Night 1900-0700

5. OBJECTIVES:

**Strategic Framework**

Implement a full suppression strategy on the fires within the River Complex. Values at risk include human safety, communities, private timberlands, critical infrastructure, associated improvements, and wilderness values. Apply tactics that offer the highest probability of success commensurate with resource availability.

**Leaders Intent**

Provide the highest level of customer service to all involved with or impacted by the River Complex. Ensure transparent, timely and accurate communication at all levels of the incident and strengthen relationships with cooperators. All incident assigned personnel should be prepared to take appropriate actions regarding:

- Professional behavior, conduct, and timely/effective communication.
- Personal safety and the safety of others, including driving slowly and defensively.
- Manage fatigue by taking breaks and maintaining work/rest cycles.
- Minimize risk and limit exposure to infectious disease by minimizing large group settings, social distancing, wearing face coverings, and handwashing.

**Management Objectives**

- Provide for firefighter and public safety through hazard recognition and application of the risk management process.
- Coordinate public information with Monument fire and other local fires to provide timely and continuous information to affected agency partners, cooperators, and to the public.
- Coordinate suppression activities with assigned incident Resource Advisors to minimize impacts to wilderness, natural and cultural resources.

**Control Objectives**

Keep the Cronan fire within existing control lines.

To prevent the Haypress fire from spreading to private property, surrounding communities, and impacting values at risk, keep the fire:

- South of Cecilville Road.
- West of the Hwy 3.
- North of Long Valley Road.
- East of the 2020 Red Salmon fire footprint.

Site Safety Plan Required  Yes  No Approved Site Safety Plan Located at: N/A

9. Attachments (☑ if attached):
- |                                 |  |                    |
|---------------------------------|--|--------------------|
| ☑ Organization List (ICS 203)   | ☑ Medical Plan (ICS 206)                   | ☑ Finance Message  |
| ☑ Weather Forecast              | ☑ Air Ops (ICS 220)                        | ☑ Training Message |
| ☑ Fire Behavior Forecast        | ☑ HR Message                               | ☑ Unit Log 214     |
| ☑ Safety Message                | ☑ Assignment List (ICS 204)                | ☑ Tentative Demob  |
| ☑ Communications Plan (ICS 205) | <input type="checkbox"/> READ/REAF message | ☑ Site Map         |



10. PREPARED BY (PLANNING SECTION CHIEF)  
*Walter J. Hry*

11. APPROVED BY (INCIDENT COMMANDER)  
*[Signature]*

## ORGANIZATION ASSIGNMENT LIST (ICS 203)

<b>1. Incident Name:</b> RIVER COMPLEX		<b>2. Operational Period: Date From:</b> 9/24/2021 Time From: 0700		<b>Date To:</b> 9/25/2021 Time To: 0700	
<b>3. Incident Commander(s) and Command Staff:</b>			<b>7. Operation Section:</b>		
IC/UC's Nickie Johnny/Lucas Minton (T)		Day Operations John Goss/Maeve Juarez (T)			
Deputy Bea Day		Planning Operations Rob Laeng/Jake Botts (T)			
Safety Officer Paul Leusch		Night Operations			
Information Officer Daron Wyatt/Mike Lindbery					
Liaison Officer Robbin Ekman/D. Hays (T)/R. Francis (T)		<b>Branch</b>		<b>V</b>	
				<b>Josh Eichamer</b>	
<b>4. Agency/Organization Representatives:</b>			Division/Group		
Agency/Organization Name		Division/Group		N	
				Jake Akerberg/Andrew Gavin (T)	
Klamath NF Rachel Smith/Ruth D'Amico		Division/Group		Q	
				Brian Fabbri/Luke Langhorst (T)	
Shasta-Trinity NF Rachel Birkey/Derek Ibarguen		Division/Group		R	
				Unstaffed	
Six Rivers NF Nolan Colegrove		Division/Group		S	
				Unstaffed	
CalFire SKU Greg Roath		Division/Group		T	
				Unstaffed	
Karuk Tribal Government Vikki Preston		Division/Group		CONTINGENCY SOUTH	
				Brian Tai	
Siskiyou County SO LT Bob Giannini		Division/Group			
Trinity County SO SGT Will Oliver		Division/Group			
CHP Rich Mendes		Division/Group			
Cal Trans Miles Cochran		Division/Group			
Private Forestry Darin Quigley		Division/Group			
Lead READ Karl Dietzler		Division/Group			
Lead ARCH Amanda Rasmussen		<b>Branch</b>		<b>X</b>	
				<b>Matt Conklin</b>	
CAL OES Pat Titus		Division/Group		Cronan	
				Unstaffed	
Covid Advisor David Peters		Division/Group		U/K/L	
				Dave Valencia	
CCC Phil Heidrick		Division/Group		M	
				Rob Winkler	
<b>5. Planning Section:</b>			Division/Group		
Chief Walter Herzog/Aaron Grove (T)		Division/Group			
Demobilization Unit		Division/Group			
Resource Unit H. Meyers/J. Dean (T)		Division/Group			
Situation Unit Terry Williamson/J. Mosley/L. Ingram (T)		<b>Branch</b>		<b>NIGHT</b>	
Documentation Unit		Division/Group		Cronan	
				Unstaffed	
SCKN Jessica Kingsbury		Division/Group		N/Q/R	
				Bill Robinson	
HRSP Julie Nelson		Division/Group		U/K/L/M	
				Bill Robinson	
ITSS Gerald Fong/Stephanie Medina (T)		Division/Group			
FBAN Dennis Burns/David Duran (T)		Division/Group			
IMET Terry Lebo/Noah Myers(T)		Division/Group			
GISS Cavel Bass/Sage Reuter (T)		<b>Air Operations Branch</b>		<b>Terry Harris</b>	
Training Specialist Dominic Panno				Air Support Group Supervisor	
				Kelvin McElfish	
<b>6. Logistics Section</b>			Air Tactical Group Supervisor		
Chief Thomas Crakes				Mike Fralicks/Matt Counts	
Supply Unit Randolph Browning				Helibase Manager	
				Lee Stewart/Efrain Garcia	
FACL/SECM Jason Hodge		<b>8. Finance/Administration Section:</b>			
Ground Support Unit M. Fitzgerald/M. Hoffman/J. Craddock		Chief		Lawrence Lee/Robert Taylor (T)	
Communications Unit Kevin Harper		Time Unit		Tracy Falls (T)	
Medical Unit Scott Mohlenbrok/Andy Branson (T)		Procurement Unit			
ORDM Casey Lewis (T)/Henry Morris (T)		Comp/Claims Unit		Cassandra Avila (T)	
Trinity Spike LSC3 Chris Johansen		Cost Unit		Andrea Sanchez (T)	
Trinity Spike FACL Art Preciado		Equipment Time		Terrell Hope	
Trinity Spike RCDM Josh Wilcox					
Etna ICP RCDM Troy Warren					
FDUL Mary Naylor (T)					
<b>Prepared By: Name:</b> Walter Herzog/Aaron Grove   <b>Position/Title:</b> PSC <b>Signature:</b> _____					
<b>ICS 203</b> <b>Date/Time:</b> 9/23/2021 2300 hours <span style="float: right;">NIMS IAP</span>					



# River Complex Weather Forecast



<b>FORECAST NO:</b>	52	<b>NAME OF FIRE:</b>	River Complex
<b>PREDICTION FOR:</b>	Fri 0700 to Tue 0700	<b>UNIT:</b>	Klamath National Forest
<b>SHIFT DATE:</b>	September 24, 2021	<b>Incident Meteorologist:</b>	
<b>FORECAST ISSUED:</b>	1900 September 23, 2021		Terry Lebo, Noah Myers (T)

## WEATHER DISCUSSION

Today will be the warmest and driest day of the week, with RH values bottoming out around 10%. Wind along ridgetops will switch from the east this morning to south or southwest this afternoon. Expect another poor night of RH recovery. Looking ahead, breezy winds are possible Sunday with cooler temperatures and a chance of rain early next week.

### FRIDAY:

**WEATHER:** Dry, sunny.  
**MAX TEMPERATURES:** **Above 5500 ft:** 71-83°F  
**Below 5500 ft:** 83-93°F  
**MIN HUMIDITY:** 11-18%  
**CLOUD COVER @ 1500** 0%  
**CHANCE WETTING RAIN** 0%

**20 FOOT WINDS:** **Ridge Lines:** From the east 4 to 6 mph in the morning becoming southwest 5 to 8 mph in the afternoon.  
**Valleys:** Light downslope becoming upslope 3 to 5 mph by late morning.

**LAL:** 1

### FRIDAY NIGHT:

**WEATHER:** Dry, mostly clear.  
**MIN TEMPERATURES:** 49-59°F  
**MAX HUMIDITY:** 30-40%  
**CHANCE WETTING RAIN** 0%  
**20 FOOT WINDS:** **Ridge Lines:** South 5 to 8 mph.  
**Valleys:** Downslope 3 to 5 mph.

## OUTLOOK

**SATURDAY:** Mostly sunny. Highs 71 to 84°F, lows 49 to 56°F. Min RH 18 to 22%. Winds from the southwest 5 to 10 mph.

**SUNDAY:** Partly cloudy. Highs 68 to 79°F, lows 45 to 53°F. Min RH 19 to 24%. Winds from the southwest 8 to 10 mph with gusts to 15 mph.

**MONDAY:** Partly cloudy. Highs 62 to 72°F, lows 37 to 44°F. Min RH 35 to 42%. Winds from the southwest around 10 gusting to 20 mph.

# FIRE BEHAVIOR FORECAST

FORECAST NUMBER: 50	TYPE OF FIRE: Wildfire
FIRE NAME: River Complex	OPERATIONAL PERIOD: September 24, 2021 24hr
DATE ISSUED: 9/23/21	TIME ISSUED: 2000
UNIT: CA-KNF, CA-SHF	SIGNED: _____ Typed/printed: Dennis Burns/s/ Dave Duran (T)/s/

## INPUTS

### WEATHER SUMMARY: Continued Warm and Dry

- **Today:** Temps 83-93, RH 11-18%. Wind, SW 5-8mph in the afternoon, light upslopes begin late morning becoming 3-5 in the afternoon.
- **Tonight:** Temps 49-59, RH 30-40%, Wind S 5-8mph, Downslope/Valley 3-5 below the ridges.

**FUELS SUMMARY:** Dense mixed conifer, old-growth timber, heavy dead/down, mixed ground fuels. Fuel models best represented by 10, SH2, TL8, TU5, SH7, and GS2.

## OUTPUTS

### FIRE BEHAVIOR

#### GENERAL: \*\*\*Fuels advisory active for Northern California\*\*\*

- Critically low Live & Dead fuel moistures. 100 and 1,000hr and Live Fuels remain dry.
- Fire behavior mostly in a backing/flanking alignment across the fire.
- Heavy dead fuels/timber-litter/light-flashy fuels are highly receptive and will continue to burn out.

ERC 82 (90<sup>th</sup> percentile). Probability of ignition, 80% in the afternoon.

#### SPECIFIC:

**Branch X:** Fire spread will be to the N and NE. Expect slow rates of spread while fire remains in a backing alignment. Increased surface fire activity with 1-2 ft FL's. Chance for isolated group tree torching. Heavy fuels will produce intense heat. Pockets of heavy dead and down will hold heat for long periods and produce intense heat. Any spotting will be short range and mostly from rollout. Structure threat exists in the Callahan area. Tonight, expect longer burning periods as RH recovery will be poor.

**Branch V:** The fire remains in a backing and flanking alignment. Expect slow rates of spread while fire remains in a backing alignment. Increased surface fire activity with 1-2 ft FL's. Chance for isolated group torching. Any spotting will be short range and mostly from rollout. Structure threat to the Coffee Creek area still exists. Structure threat exists in the Eagle Creek Loop area. Many natural barriers to fire spread exist throughout the Branch. However, don't let your guard down, the fire will continue to creep through any available fuel. Tonight, expect longer burning periods as RH recovery will be poor.

**Cronan Fire:** No fire progression expected.

**All Areas:** Spotting from rollout will continue to be problematic. Slope-reversals are probable from any fire burning in drainage bottoms. Mop-up is extensive. Fire activity will moderate when it reaches the Red Salmon burn scar to the east.

**AIR OPERATIONS:** Smoke has the potential to impact visibility and effect aircraft availability along the south and east sides.

## SAFETY

- Make sure Lookouts are posted in places where they can see potential spotting.
- Fire weakened timber poses a threat to personnel working in timber areas.
- Unburned fuel between you and the fire.

# Fuels and Fire Behavior Advisory

## Northern California

September 16, 2021, to September 30, 2021



**Subject:** Potential for extreme fire behavior due to continued critically low live and dead fuel moistures. Very dry conditions resulting from persistent drought, minimal snowpack and spring precipitation, periods of excessive heat have caused elevated to record fire danger rating values across much of northern California. Anticipated moisture could temporarily reduce some threat across the far north PSAs.

**Discussion:** Fires burning in northern California continue to exhibit extreme fire growth due to critical fuel conditions. Rapid fire spread can be fuels driven. Wind events have led to extreme rates of spread. Surface fuels are very receptive to embers. Long range spotting, area ignition, and group torching is occurring on large fires frequently.

**Difference from normal conditions:** Extreme to Exceptional levels of drought conditions continue to exist across much of Northern California. The drought is expected to persist or intensify through the rest of fire season. Deficient rainfall and snowpack with early melt off, coupled with periods of extreme heat has resulted in fuels that are critically dry, with record setting conditions for most areas.

### Concerns to Firefighters and the Public:

- Energy Release Component (ERC) at numerous weather stations set record maximums already this year. Recent scattered rain has reduced some ERC values, but fuels are rebounding quickly. Extreme fire behavior has been observed in all fuel types and both live and dead fuels. **Continue to anticipate increased spread rates, spotting, and active nighttime burning.**
- The combination of extreme levels of persistent drought and record-low rainfall and snowpack amounts has led to very low live and dead fuel moistures. 1000-hour fuel moistures continue to trend at record low levels in many areas. Live fuel moistures in grasses, shrubs, and trees, remain at critical levels in many areas of Northern California due to limited green-up this spring. **Expect fires to ignite easier, spread faster and burn hotter. Reports of blistered paint on vehicles have been surprisingly frequent so far this year. Do not expect fires to exhibit reduced fire behavior when entering areas of live fuels; anticipate increased spread rates and spotting.**
- Direct attack is often not feasible under regular diurnal wind conditions with ground resources. Aviation utilization is often insufficient in moderating rate of spread without immediate heavy ground resource response. **Anticipate higher resistance to control in all fuel types.**
- Northern California continues to experience large fire activity and multiple team deployments and will likely experience an extended fire season. It is important to be mindful of and manage fatigue for all resources. **Everyone, every day, returns home safely.**
- The frequency of North to Northeast offshore wind events increases from mid-September into the fall. These strong winds are often accompanied by very low RHs and will pose an increased hazard when combined with this year's critically dry fuels conditions. **Watch for change.**

### Mitigation Measures:

- Local and inbound fire personnel need to be aware that fire behavior across the state is exceeding normal expectations for this time of the year. **Local briefings need to be thorough and highlight specific fire environment conditions. These include but are not limited to local weather forecasts, PocketCards, ERC's, live and dead fuel moistures.**
- Suppression actions need to be based on good anchor points, escape routes, and safety zones. **Remember LCES. Experienced lookouts are essential under these conditions.**
- Base all actions on current and expected behavior of the fire. **Augment initial attack resources as incident activity dictates.**

**Area of Concern:** Northern California except for the following Predictive Service Areas: North Coast and Bay Marine, west of Highway 101 in Mid-Coast to Mendocino and Diablo-Santa Cruz, and the northeastern portion of Far Eastside.

# Fuels and Fire Behavior Advisory

## Northern California

September 16, 2021, to September 30, 2021



**Lookouts  
Communications  
Escape Routes  
Safety Zones**

**Incident**  
**Operation Period: 09/24-25/2021 0700-0700**

**SAFETY MESSAGE**

**Ask yourself “What Can Go Wrong”**

- **Identify the critical elements of your plan, and ask “what if” a loss of one of these elements occurs**
- **Develop a plan to deal with the problem before it occurs**
- **Communicate the plan to all of your personnel**
- **Validate the new plan to ensure it matches the current situation**

***MAJOR HAZARDS AND RISKS***

STEEP TERRAIN FATIGUE SPOT FIRES	ROLLING MATERIAL DEHYDRATION BUCKET DROPS	HEAVY EQUIPMENT SNAGS COMPLACENCY
--	---	---

***Be sure all elements of your safety plan are in place prior to engagement***

**Your Brain is the most important tool you bring to the fire**

- **Firefighting is a mental as well as a physical activity.**
- **Personnel responsible for the safety of others should spend the majority of their time on the mental side of firefighting.**
- **Those mental activities include; planning, ensuring effective communication, monitoring the fire environment, anticipating problems, and forecasting future needs.**

**Mop Up is Hazardous Work!**

- **Injury and accidents are common during the mop up phase.**
  - **Gather situational awareness in your work area and communicate it.**
  - **Reduce risk by identifying and mitigating hazards.**
  - **Stay focused on task, don't let the routine nature of the assignment**
- allow your mind to wander resulting in a loss of situational awareness.**
- **Take frequent breaks, stay hydrated, and manage fatigue.**



# ASSIGNMENT LIST (ICS 204 WF)

CONTROLLED UNCLASSIFIED INFORMATION/BASIC

<b>1. Incident Name:</b> <p style="text-align: center; font-weight: bold;">RIVER COMPLEX</p>	<b>2. Operational Period:</b> Date From: 09/24/21      Date To: 09/25/21 Time From: 0700              Time To: 0700	<b>3. Branch</b> <b>Division</b> <p style="text-align: center; font-size: 2em; font-weight: bold;">V                                  N</p> <p style="text-align: center;">Page 1 of 2                      November</p>
---	---	---

<b>4. Operations Personnel:</b> Operations Section Chief: <b>John Goss/Maeve Juarez (T)</b> Branch Director: <b>Josh Eichamer</b> Division/Group Supervisor: <b>Jake Akerberg/Andrew Gavin (T)</b>		Night Ops: Branch Safety: <b>Larry Wright</b> Air Attack: <b>Mike Fralicks/Matt Counts</b>
---	--	--

5. Resources Assigned:	** Resources not in Bold are 24 Hour **						
Resource Identifier	LWD	Leader	Personnel	Request #	Hours	Reporting Location	
HC2I LNF-LASSEN CREW 9	9/30	<b>ALLEN SCHULTZ</b>	18	<b>C-215</b>	<b>0700-1900</b>	<b>TRINITY SPIKE</b>	
HC2I MNF-ELK MOUNTAIN	10/1	<b>REYMUNDO REYES</b>	21	<b>C-216</b>	<b>0700-1900</b>	<b>STODDARD SPIKE</b>	
SMOD MDF-MODOC CREW 1	9/30	<b>WILLIE ALMAND</b>	10	<b>O-1385</b>	<b>0700-1900</b>	<b>STODDARD SPIKE</b>	
HC2I PVT-GRAYBACK 15A	10/6	<b>DAVID BLANCO</b>	20	<b>C-258</b>	<b>0700-1900</b>	<b>STODDARD SPIKE</b>	
HC2I PVT-GFP ENTERPRISES 6D	10/7	<b>CASEY PRYOR</b>	19	<b>C-250</b>	<b>0700-1900</b>	<b>TRINITY SPIKE</b>	
HC2 PVT-GRAYBACK 6	10/6	<b>JAKE ADAMS</b>	20	<b>C-262</b>	<b>0700-1900</b>	<b>TRINITY SPIKE</b>	
ENG3 AZ-ORC-692	10/2	<b>TYLER MCGOVERN</b>	4	<b>E-732</b>	<b>0700-1900</b>	<b>TRINITY SPIKE</b>	
ENG3 PVT-GRAYBACK FORESTRY	10/2	<b>WIELY VOLZ</b>	3	<b>E-737</b>	<b>0700-1900</b>	<b>TRINITY SPIKE</b>	
ENG3 PVT-J3 CONTRACTING E-452	9/26	<b>CLAYTON CONSTANT</b>	3	<b>E-452</b>	<b>0700-1900</b>	<b>TRINITY SPIKE</b>	
ENG6 AZ-NAA-3665	9/25	<b>JASON HERRICK</b>	3	<b>E-637</b>	<b>0700-1900</b>	<b>TRINITY SPIKE</b>	
ENG6-LKR-8561	9/28	<b>KEGAN SPENCER</b>	5	<b>E-683</b>	<b>0700-1900</b>	<b>TRINITY SPIKE</b>	
ENG6 PVT-L&A WILDFIRE	9/26	<b>JUSTIN WILLIAMS</b>	3	<b>E-744</b>	<b>0700-1900</b>	<b>TRINITY SPIKE</b>	
ENG6 PVT-BLUE SKY FIRE E-689	9/29	<b>ALEX PARKER</b>	3	<b>E-689</b>	<b>0700-1900</b>	<b>TRINITY SPIKE</b>	
ENG6 PVT-R CONSTRUCTION	10/1	<b>RICHARD DEROCHE</b>	3	<b>E-730</b>	<b>0700-1900</b>	<b>TRINITY SPIKE</b>	
ENG6 PVT-GRAYBACK E-722	9/30	<b>DON SCRIVEN</b>	3	<b>E-722</b>	<b>0700-1900</b>	<b>TRINITY SPIKE</b>	
ENG6 PVT-GRAYBACK FORESTRY	10/5	<b>JONATHAN WILDER</b>	3	<b>E-416</b>	<b>0700-1900</b>	<b>TRINITY SPIKE</b>	
DO22 PVT-STOCKMEN'S	9/29	<b>ALAN HARRISON</b>	2	<b>E-622</b>	<b>0700-1900</b>	<b>TRINITY SPIKE</b>	
DO22-PVT-MOBLEY	9/29	<b>HOLDEN PALMER</b>	2	<b>E-182</b>	<b>0700-1900</b>	<b>TRINITY SPIKE</b>	
DO23 PVT-JUNGWIRTH	10/3	<b>SAM HENDRIX</b>	2	<b>E-126</b>	<b>0700-1900</b>	<b>TRINITY SPIKE</b>	
MAST PVT-ZEB'S TREE SERVICE	10/1	<b>AUSTIN BROWN</b>	2	<b>E-320</b>	<b>0700-1900</b>	<b>TRINITY SPIKE</b>	
SKG2 PVT-UPPER VALLEY	9/30	<b>JAMES KRUCKEBERG</b>	2	<b>E-448</b>	<b>0700-1900</b>	<b>TRINITY SPIKE</b>	
CHIP-PVT-DAVIS CORP	10/5	<b>JAMES HUNNELL</b>	3	<b>E-623</b>	<b>0700-1900</b>	<b>TRINITY SPIKE</b>	

**6. Work Assignments:**  
Continue developing direct and indirect line in Sections 31 and 30 south of Minnehaha Creek. Mop up and patrol direct line to the north of Coffee Creek. Continue to improve indirect line as it progresses to the north around Eagle Creek subdivision. Provide structure protection to property along the Hwy 3 corridor.

**7. Special Instructions:**  
Avoid travel over the small bridge in Eagle Creek subdivision. Identify and collect equipment and trash for backhaul. READS will check in and out and with DIVS. Continue to collaborate with READs. All natural and cultural resource concerns are flagged with orange/white candy-stripe flagging. Mountain Medics AMBU #1 is available to all divisions in Branch V.

8. Communications							
Name	Ch	Function	Rx Freq	Rx Tone	Tx Freq	Tx Tone	Notes
NIFC C31	B.3	COMMAND	173.0250N	T-9 100.0	163.8250N	T-9 100.0	CRAGGY PEAK
NIFC C86	B.4	COMMAND	166.1250N	T-9 100.0	162.1750N	T-9 100.0	BRANCH V, PACKERS PEAK
NIFC C97	B.5	COMMAND	168.1375N	T-9 100.0	165.1500N	T-9 100.0	BRANCH V, DIV Q - ROZ POINT
NIFC C112	B.6	COMMAND	173.6000N	T-9 100.0	162.0750N	T-9 100.0	BR V, BONANZA KING
R5 T4	B.10	TACTICAL	166.5500N	T-9 100.0	166.5500N	T-9 100.0	BR X, DIV K/U, BR V, DIV N, NIGHT DIV N/Q/R
A/G CMD	13	AIR TO GROUND	169.1500N		169.1500N		AIR TO GROUND COMMAND
A/G TAC	14	AIR TO GROUND	162.8125N		162.8125N		AIR TO GROUND TACTICAL
CALCORD	15	MEDICAL	156.0750N	T6 - 156.7	156.0750N	T6 - 156.7	MEDEVAC COORDINATION
AIRGUARD	16	AIRGUARD	168.6250N		168.6250N	110.9	TONE ON TRANSMIT ONLY - URGENT AIRCRAFT CONTACT

**9. Prepared by: Name:** H. Meyers/J. Dean (T)      RESL      *W.H.*  
**ICS 204**      Date/Time: 9/23/2021      2200      Personnel Count: 154

# ASSIGNMENT LIST (ICS 204 WF)

CONTROLLED UNCLASSIFIED INFORMATION/BASIC

<b>1. Incident Name:</b> <b>RIVER COMPLEX</b>	<b>2. Operational Period:</b> Date From: 09/24/21      Date To: 09/25/21 Time From: 0700              Time To: 0700	<b>3. Branch</b> <b>V</b>	<b>Division</b> <b>N</b>
		Page 2 of 2	November

<b>4. Operations Personnel:</b>	
Operations Section Chief: <b>John Goss/Maeve Juarez (T)</b> Branch Director: <b>Josh Eichamer</b> Division/Group Supervisor: <b>Jake Akerberg/Andrew Gavin (T)</b>	Night Ops: Branch Safety: <b>Larry Wright</b> Air Attack: <b>Mike Fralicks/Matt Counts</b>

5. Resources Assigned:	** Resources not in Bold are 24 Hour **						
Resource Identifier	LWD	Leader	Personnel	Request #	Hours	Reporting Location	
WTT1 5J WATER	9/25	<b>CORY CLARK</b>	2	<b>E-308</b>	<b>0700-1900</b>	TRINITY SPIKE	
WTT2 PVT-GREAT BASIN FIRE	10/4	<b>GENE HANCOCK</b>	2	<b>E-439</b>	<b>0700-1900</b>	TRINITY SPIKE	
WTS2 PVT-GRANITE COMMERICAL	9/26	<b>JAMES JOHNSON</b>	1	<b>E-235</b>	<b>0700-1900</b>	TRINITY SPIKE	
FMOD PVT-BROTHERS FIRE	9/25	<b>ANDY MCKEE</b>	2	<b>O-1150</b>	<b>0700-1900</b>	TRINITY SPIKE	
TFLD PETERMAN	9/24	<b>FORREST PETERMAN</b>	1	<b>O-1146</b>	<b>0700-1900</b>	TRINITY SPIKE	
TFLD(T) GRAHAM	9/28	<b>CHRISTOPHER GRAHAM</b>	1	<b>O-1327</b>	<b>0700-1900</b>	TRINITY SPIKE	
TFLD (T) THOMPSON	9/27	<b>BRYAN THOMPSON</b>	1	<b>O-1306</b>	<b>0700-1900</b>	TRINITY SPIKE	
HEQB(T) LOWRY	10/1	<b>STEPHEN LOWRY</b>	1	<b>O-1383</b>	<b>0700-1900</b>	TRINITY SPIKE	
AZ-FRY MEDICAL TEAM 2	9/30	<b>ADAM SHORT</b>	2	<b>O-1351</b>	<b>0700-1900</b>	TRINITY SPIKE	
REMS REMOTE ACCESS MEDICAL	9/30	<b>ADAM MACK</b>	4	<b>O-596</b>	<b>0700-1900</b>	STODDARD SPIKE	
RES ROUGH COUNTRY MED. TEAM 3	10/2	<b>NORM ROOKER</b>	2	<b>E-727</b>	<b>0700-1900</b>	TRINITY SPIKE	
SOFR(T) NILO	10/4	<b>ED NILO</b>	1	<b>O-1409</b>	<b>0700-1900</b>	TRINITY SPIKE	
ARCH BROWN	9/29	<b>RYAN BROWN</b>	1	<b>O-1246</b>	<b>0700-1900</b>	TRINITY SPIKE	
REAF BARRAGAR	9/25	<b>JOTHAM BARRAGAR</b>	1	<b>O-1222</b>	<b>0700-1900</b>	STODDARD SPIKE	
REAF RADEMACHER	9/26	<b>ERIK RADEMACHER</b>	1	<b>O-1271</b>	<b>0700-1900</b>	TRINITY SPIKE	

**6. Work Assignments:**  
 Continue developing direct and indirect line in Sections 31 and 30 south of Minnehaha Creek. Mop up and patrol direct line to the north of Coffee Creek. Continue to improve indirect line as it progresses to the north around Eagle Creek subdivision. Provide structure protection to property along the Hwy 3 corridor.

**7. Special Instructions:**  
 Avoid travel over the small bridge in Eagle Creek subdivision. Identify and collect equipment and trash for backhaul. READS will check in and out and with DIVS. Continue to collaborate with READs. All natural and cultural resource concerns are flagged with orange/white candy-stripe flagging. Mountain Medics AMBU #1 is available to all divisions in Branch V.

8. Communications							
Name	Ch	Function	Rx Freq	Rx Tone	Tx Freq	Tx Tone	Notes
NIFC C31	B.3	COMMAND	173.0250N	T-9 100.0	163.8250N	T-9 100.0	CRAGGY PEAK
NIFC C86	B.4	COMMAND	166.1250N	T-9 100.0	162.1750N	T-9 100.0	BRANCH V, PACKERS PEAK
NIFC C97	B.5	COMMAND	168.1375N	T-9 100.0	165.1500N	T-9 100.0	BRANCH V, DIV Q - ROZ POINT
NIFC C112	B.6	COMMAND	173.6000N	T-9 100.0	162.0750N	T-9 100.0	BR V, BONANZA KING
R5 T4	B.10	TACTICAL	166.5500N	T-9 100.0	166.5500N	T-9 100.0	BR X, DIV K/U, BR V, DIV N, NIGHT DIV N/Q/R
A/G CMD	13	AIR TO GROUND	169.1500N		169.1500N		AIR TO GROUND COMMAND
A/G TAC	14	AIR TO GROUND	162.8125N		162.8125N		AIR TO GROUND TACTICAL
CALCORD	15	MEDICAL	156.0750N	T6 - 156.7	156.0750N	T6 - 156.7	MEDEVAC COORDINATION
AIRGUARD	16	AIRGUARD	168.6250N		168.6250N	110.9	STONE ON TRANSMIT ONLY - URGENT AIRCRAFT CONTACT

**9. Prepared by: Name:** H. Meyers/J. Dean (T)      RESL      *W.H.*

ICS 204      Date/Time: 9/23/2021      2200      Personnel Count: 23

# ASSIGNMENT LIST (ICS 204 WF)

CONTROLLED UNCLASSIFIED INFORMATION//BASIC

<b>1. Incident Name:</b>	<b>2. Operational Period:</b>	<b>3. Branch</b>	<b>Division</b>
<b>RIVER COMPLEX</b>	Date From: 09/24/21      Date To: 09/25/21 Time From: 0700              Time To: 0700	<b>V</b>	<b>Q</b>
		Page 1 of 1	Quebec

<b>4. Operations Personnel:</b>	
Operations Section Chief: <b>John Goss/Maeve Juarez (T)</b>	Night Ops:
Branch Director: <b>Josh Eichamer</b>	Branch Safety: <b>Larry Wright</b>
Division/Group Supervisor: <b>Brian Fabbri/Luke Langhorst (T)</b>	Air Attack: <b>Mike Fralicks/Matt Counts</b>

<b>5. Resources Assigned:</b>	<b>** Resources not in Bold are 24 Hour **</b>					
Resource Identifier	LWD	Leader	Personnel	Request #	Hours	Reporting Location
<b>HC2 PVT-R&amp;R CONTRACTING</b>	9/28	<b>ALFREDO MARCELINO</b>	20	<b>C-211</b>	<b>0700-1900</b>	<b>TRINITY SPIKE</b>
<b>HC2 PVT-LAVA RIVER CREW 1</b>	10/7	<b>RAUL QUEVEDO</b>	20	<b>C-267</b>	<b>0700-1900</b>	<b>TRINITY SPIKE</b>
<b>WFM2 SRF-SIX RIVERS</b>	10/2	<b>TRISTAN KIEHL</b>	9	<b>O-1417</b>	<b>0700-1900</b>	<b>TRINITY SPIKE</b>
<b>ENG3 SHF-361</b>	9/28	<b>LONNY HAGEDON</b>	5	<b>E-666</b>	<b>0700-1900</b>	<b>TRINITY SPIKE</b>
<b>ENG6 MT-BRF-651</b>	9/28	<b>JARROD CHANDLER</b>	6	<b>E-682</b>	<b>0700-1900</b>	<b>TRINITY SPIKE</b>
<b>ENG6 UT-CO-BR11</b>	9/28	<b>NATHAN TRUJILLO</b>	3	<b>E-690</b>	<b>0700-1900</b>	<b>TRINITY SPIKE</b>
<b>ENG6 PVT-BIG STATE E-338</b>	10/5	<b>ANTONIO PETERSEN</b>	3	<b>E-338</b>	<b>0700-1900</b>	<b>TRINITY SPIKE</b>
<b>MAST PVT-A&amp;F ENTERPRISES</b>	9/25	<b>GARY AINGER</b>	2	<b>E-405</b>	<b>0700-1900</b>	<b>TRINITY SPIKE</b>
<b>WTS2 PVT-ALLIED</b>	10/2	<b>CHADES LIEDTKE</b>	2	<b>E-22</b>	<b>0700-1900</b>	<b>TRINITY SPIKE</b>
<b>WTS2 PVT-H &amp; H FEEDERS</b>	9/24	<b>MARK HURLIMANN</b>	1	<b>E-179</b>	<b>0700-1900</b>	<b>TRINITY SPIKE</b>
<b>WTS2 PVT-HURLIMANN</b>	10/3	<b>COLBY GULLY</b>	1	<b>E-273</b>	<b>0700-1900</b>	<b>TRINITY SPIKE</b>
<b>FMOD PVT-W. MOUNTAIN TIMBER</b>	9/28	<b>DAN KECK</b>	2	<b>O-823</b>	<b>0700-1900</b>	<b>TRINITY SPIKE</b>
<b>EMPF SPELLMAN</b>	9/25	<b>RONALD SPELLMAN</b>	1	<b>O-1004</b>	<b>0700-1900</b>	<b>TRINITY SPIKE</b>

**6. Work Assignments:**  
Continue patrol and mop up of control lines from Boulder Lake Trailhead easterly to the northwest corner of Section 13. Account for equipment on Division and backhaul as appropriate.

**7. Special Instructions:**  
Identify and collect equipment for backhaul.  
READS will check in and out and with DIVS. Continue to collaborate with READS. All natural and cultural resource concerns are flagged with orange/white candy-stripe flagging.  
Mountain Medics AMBU #1 is available to all divisions in Branch V.

<b>8. Communications</b>							
Name	Ch	Function	Rx Freq	Rx Tone	Tx Freq	Tx Tone	Notes
NIFC C31	B.3	COMMAND	173.0250N	T-9 100.0	163.8250N	T-9 100.0	CRAGGY PEAK
NIFC C86	B.4	COMMAND	166.1250N	T-9 100.0	162.1750N	T-9 100.0	BRANCH V, PACKERS PEAK
NIFC C97	B.5	COMMAND	168.1375N	T-9 100.0	165.1500N	T-9 100.0	BRANCH V, DIV Q - ROZ POINT
NIFC C112	B.6	COMMAND	173.6000N	T-9 100.0	162.0750N	T-9 100.0	BR V, BONANZA KING
R5 T5	B.11	TACTICAL	167.1125N	T-9 100.0	167.1125N	T-9 100.0	BR V, DIV Q
A/G CMD	13	AIR TO GROUND	169.1500N		169.1500N		AIR TO GROUND COMMAND
A/G TAC	14	AIR TO GROUND	162.8125N		162.8125N		AIR TO GROUND TACTICAL
CALCORD	15	MEDICAL	156.0750N	T6 - 156.7	156.0750N	T6 - 156.7	MEDEVAC COORDINATION
AIRGUARD	16	AIRGUARD	168.6250N		168.6250N	110.9	-tone ON TRANSMIT ONLY - URGENT AIRCRAFT CONTACT

**9. Prepared by: Name:** H. Meyers/J. Dean (T)      RESL      *W.H.*

ICS 204      Date/Time: 9/23/2021      2200      Personnel Count: 75

# ASSIGNMENT LIST (ICS 204 WF)

CONTROLLED UNCLASSIFIED INFORMATION//BASIC

<b>1. Incident Name:</b> <b>RIVER COMPLEX</b>	<b>2. Operational Period:</b> Date From: 09/24/21    Date To: 09/25/21 Time From: 0700            Time To: 0700	<b>3. Branch</b> <b>V</b>	<b>Division</b> <b>R</b>
--	---	------------------------------	-----------------------------

<b>4. Operations Personnel:</b>		Page 1 of 1	Romeo
Operations Section Chief: <b>John Goss/Maeve Juarez (T)</b>		Night Ops:	
Branch Director: <b>Josh Eichamer</b>		Branch Safety: <b>Larry Wright</b>	
Division/Group Supervisor: <b>Unstaffed</b>		Air Attack: <b>Mike Fralicks/Matt Counts</b>	

<b>5. Resources Assigned:</b>		** Resources not in Bold are 24 Hour **				
Resource Identifier	LWD	Leader	Personnel	Request #	Hours	Reporting Location

**6. Work Assignments:**  
Unstaffed

**7. Special Instructions:**

<b>8. Communications</b>							
Name	Ch	Function	Rx Freq	Rx Tone	Tx Freq	Tx Tone	Notes
NIFC C31	B.3	COMMAND	173.0250N	T-9 100.0	163.8250N	T-9 100.0	CRAGGY PEAK
NIFC C86	B.4	COMMAND	166.1250N	T-9 100.0	162.1750N	T-9 100.0	BRANCH V, PACKERS PEAK
NIFC C97	B.5	COMMAND	168.1375N	T-9 100.0	165.1500N	T-9 100.0	BRANCH V, DIV Q - ROZ POINT
NIFC C112	B.6	COMMAND	173.6000N	T-9 100.0	162.0750N	T-9 100.0	BR V, BONANZA KING
R5 T6	B.12	TACTICAL	168.2375N	T-9 100.0	168.2375N	T-9 100.0	BR X, DIV R
A/G CMD	13	AIR TO GROUND	169.1500N		169.1500N		AIR TO GROUND COMMAND
A/G TAC	14	AIR TO GROUND	162.8125N		162.8125N		AIR TO GROUND TACTICAL
CALCORD	15	MEDICAL	156.0750N	T6 - 156.7	156.0750N	T6 - 156.7	MEDEVAC COORDINATION
AIRGUARD	16	AIRGUARD	168.6250N		168.6250N	110.9	STONE ON TRANSMIT ONLY - URGENT AIRCRAFT CONTACT

**9. Prepared by: Name:** H. Meyers/J. Dean (T)      RESL      *W.H.*

ICS 204      Date/Time: 9/23/2021      2200      Personnel Count: 0

# ASSIGNMENT LIST (ICS 204 WF)

CONTROLLED UNCLASSIFIED INFORMATION/BASIC

<b>1. Incident Name:</b> <b>RIVER COMPLEX</b>	<b>2. Operational Period:</b> Date From: 09/24/21 Date To: 09/25/21 Time From: 0700 Time To: 0700	<b>3. Branch</b> <b>V</b>	<b>Division</b> <b>S</b>
--	---	------------------------------	-----------------------------

<b>4. Operations Personnel:</b> Operations Section Chief: <b>John Goss/Maeve Juarez (T)</b> Branch Director: <b>Josh Eichamer</b> Division/Group Supervisor: <b>Unstaffed</b>	Night Ops: Branch Safety: <b>Larry Wright</b> Air Attack: <b>Mike Fralicks/Matt Counts</b>
--	--

<b>5. Resources Assigned:</b>		<b>** Resources not in Bold are 24 Hour **</b>					
Resource Identifier	LWD	Leader	Personnel	Request #	Hours	Reporting Location	

<b>6. Work Assignments:</b> Unstaffed
--

<b>7. Special Instructions:</b>
---------------------------------

<b>8. Communications</b>							
Name	Ch	Function	Rx Freq	Rx Tone	Tx Freq	Tx Tone	Notes
NIFC C86	B.4	COMMAND	166.1250N	T-9 100.0	162.1750N	T-9 100.0	BRANCH V, PACKERS PEAK
NIFC C112	B.6	COMMAND	173.6000N	T-9 100.0	162.0750N	T-9 100.0	BR V, BONANZA KING
NIFC T3	B.8	TACTICAL	168.6000N	T-9 100.0	168.6000N	T-9 100.0	BR V DIV S
A/G CMD	13	AIR TO GROUND	169.1500N		169.1500N		AIR TO GROUND COMMAND
A/G TAC	14	AIR TO GROUND	162.8125N		162.8125N		AIR TO GROUND TACTICAL
CALCORD	15	MEDICAL	156.0750N	T6 - 156.7	156.0750N	T6 - 156.7	MEDEVAC COORDINATION
AIRGUARD	16	AIRGUARD	168.6250N		168.6250N	110.9	tone on transmit only - URGENT AIRCRAFT CONTACT

<b>9. Prepared by: Name:</b> H. Meyers/J. Dean (T) RESL <i>W.H.</i>	<b>Date/Time:</b> 9/23/2021 2200	<b>Personnel Count:</b> 0
---	----------------------------------	---------------------------

# ASSIGNMENT LIST (ICS 204 WF)

CONTROLLED UNCLASSIFIED INFORMATION/BASIC

<b>1. Incident Name:</b>	<b>2. Operational Period:</b>	<b>3. Branch</b>	<b>Division</b>
<b>RIVER COMPLEX</b>	Date From: 09/24/21     Date To: 09/25/21 Time From: 0700     Time To: 0700	<b>V</b>	<b>T</b>

<b>4. Operations Personnel:</b>		Page 1 of 1	Tango
Operations Section Chief: <b>John Goss/Maeve Juarez (T)</b>		Night Ops:	
Branch Director: <b>Josh Eichamer</b>		Branch Safety: <b>Larry Wright</b>	
Division/Group Supervisor: <b>Unstaffed</b>		Air Attack: <b>Mike Fralicks/Matt Counts</b>	

** Resources not in Bold are 24 Hour **							
Resource Identifier	LWD	Leader	Personnel	Request #	Hours	Reporting Location	

<b>6. Work Assignments:</b> Unstaffed
--

<b>7. Special Instructions:</b>
---------------------------------

<b>8. Communications</b>							
Name	Ch	Function	Rx Freq	Rx Tone	Tx Freq	Tx Tone	Notes
NIFC C1	B.1	COMMAND	170.9750N	T-9 100.0	168.7000N	T-9 100.0	EDDY GULCH LOOKOUT
NIFC C86	B.4	COMMAND	166.1250N	T-9 100.0	162.1750N	T-9 100.0	BRANCH V, PACKERS PEAK
NIFC T3	B.8	TACTICAL	168.6000N	T-9 100.0	168.6000N	T-9 100.0	BR V DIV S
A/G CMD	13	AIR TO GROUND	169.1500N		169.1500N		AIR TO GROUND COMMAND
A/G TAC	14	AIR TO GROUND	162.8125N		162.8125N		AIR TO GROUND TACTICAL
CALCORD	15	MEDICAL	156.0750N	T6 - 156.7	156.0750N	T6 - 156.7	MEDEVAC COORDINATION
AIRGUARD	16	AIRGUARD	168.6250N		168.6250N	110.9	TONE ON TRANSMIT ONLY - URGENT AIRCRAFT CONTACT

<b>9. Prepared by: Name:</b> H. Meyers/J. Dean (T)	RESL	<i>WR</i>
<b>ICS 204</b>	Date/Time: 9/23/2021 2200	Personnel Count: 0

# ASSIGNMENT LIST (ICS 204 WF)

CONTROLLED UNCLASSIFIED INFORMATION//BASIC

<b>1. Incident Name:</b> <b>RIVER COMPLEX</b>	<b>2. Operational Period:</b> Date From: 09/24/21    Date To: 09/25/21 Time From: 0700    Time To: 0700	<b>3. Branch</b> <b>V</b>	<b>Division</b> <b>CONTINGENCY SOUTH</b>
		Page 1 of 2	

<b>4. Operations Personnel:</b> Operations Section Chief: <b>John Goss/Maeve Juarez (T)</b> Branch Director: <b>Josh Eichamer</b> Division/Group Supervisor: <b>Brian Tai</b>		Night Ops: Branch Safety: <b>Larry Wright</b> Air Attack: <b>Mike Fralicks/Matt Counts</b>
--	--	--

5. Resources Assigned:	** Resources not in Bold are 24 Hour **					
Resource Identifier	LWD	Leader	Personnel	Request #	Hours	Reporting Location
<b>GROUP #1</b>						
HEQB CZINSKI	9/27	<b>CASEY CZINSKI</b>	1	<b>O-1264</b>	<b>0700-1900</b>	<b>TRINITY SPIKE</b>
DOZ2-PVT-BLACK OPERATIONS	9/30	<b>WILL BLACK</b>	2	<b>E-333</b>	<b>0700-1900</b>	<b>TRINITY SPIKE</b>
DOZ2 PVT-OWENS FREIGHT	9/26	<b>TYLER HARGIS</b>	2	<b>E-620</b>	<b>0700-1900</b>	<b>TRINITY SPIKE</b>
DOZ2-PVT-DENNIS 242	10/2		2	<b>E-156</b>	<b>0700-1900</b>	<b>TRINITY SPIKE</b>
MAST PVT-HAYDEN CONTRACTING	10/4		2	<b>E-384</b>	<b>0700-1900</b>	<b>TRINITY SPIKE</b>
MAST PVT-DAVIS CORP. E-459	9/27	<b>RANDY BLANSETT</b>	2	<b>E-459</b>	<b>0700-1900</b>	<b>TRINITY SPIKE</b>
MAST PVT-LAP E-461	9/29	<b>CYLE MOSS</b>	2	<b>E-461</b>	<b>0700-1900</b>	<b>TRINITY SPIKE</b>
SKG1 PVT-FORESTRY ALTERGOTT	9/29	<b>NATHAN BEAN</b>	2	<b>E-539</b>	<b>0700-1900</b>	<b>TRINITY SPIKE</b>
FEL2 PVT-SC LOGGING, LLC	10/3	<b>DUSTIN PHILLIPS</b>	2	<b>E-397</b>	<b>0700-1900</b>	<b>TRINITY SPIKE</b>
WTS2 PVT-ALPINE	9/27	<b>CONRAD BURBANK</b>	1	<b>E-262</b>	<b>0700-1900</b>	<b>TRINITY SPIKE</b>
<b>GROUP #3</b>						
TFLD (T) HEUPEL	9/28	<b>DAVID HEUPEL</b>	1	<b>O-1322</b>	<b>0700-1900</b>	<b>TRINITY SPIKE</b>
HEQB WYMAN	9/30	<b>KELLEY WYMAN</b>	1	<b>O-1372</b>	<b>0700-1900</b>	<b>TRINITY SPIKE</b>
HEQB (T) HARNOS	9/29	<b>TRAVIS HARNOS</b>	1	<b>O-1373</b>	<b>0700-1900</b>	<b>TRINITY SPIKE</b>
DOZ2-OK-OKS-SE-181	9/30	<b>STEVEN PAINTER</b>	1	<b>E-402</b>	<b>0700-1900</b>	<b>TRINITY SPIKE</b>
DOZ2-PVT-CRAIG MOUNTAIN	10/4		2	<b>E-315</b>	<b>0700-1900</b>	<b>TRINITY SPIKE</b>
DOZ2-PVT-EMERY FARM			2	<b>E-401</b>	<b>0700-1900</b>	<b>TRINITY SPIKE</b>
MAST PVT-LAP 11882	9/28	<b>TROY SMITH</b>	2	<b>E-215</b>	<b>0700-1900</b>	<b>TRINITY SPIKE</b>
MAST PVT-MILLER EXCAVATING	10/5	<b>KALAH MILLER</b>	2	<b>E-216</b>	<b>0700-1900</b>	<b>TRINITY SPIKE</b>
SKG2 PVT-SALOMON LOGGING	10/1	<b>TIM NESMITH</b>	2	<b>E-538</b>	<b>0700-1900</b>	<b>TRINITY SPIKE</b>
FEL1 PVT-RESTORATION SOLUTION	9/28	<b>BRENT RACHER</b>	2	<b>E-465</b>	<b>0700-1900</b>	<b>TRINITY SPIKE</b>

**6. Work Assignments:**  
Scout and construct contingency line from DP63 to DP65 and to the northwest. Construct in-direct handline from DP63 to DP61. Scout and construct contingency line east of Highway 3 from DP61 to DP70.

**7. Special Instructions:**  
Coordinate traffic control along Hwy. 3 as necessary.  
Continue to collaborate with READs. All natural and cultural resource concerns are flagged with orange/white candy-stripe flagging.  
Mountain Medics AMBU #1 is available to all divisions in Branch V.

<b>8. Communications</b>							
Name	Ch	Function	Rx Freq	Rx Tone	Tx Freq	Tx Tone	Notes
NIFC C31	B.3	COMMAND	173.0250N	T-9 100.0	163.8250N	T-9 100.0	CRAGGY PEAK
NIFC C112	B.6	COMMAND	173.6000N	T-9 100.0	162.0750N	T-9 100.0	BR V, BONANZA KING
NIFC T1	B.7	TACTICAL	168.0500N	T-9 100.0	168.0500N	T-9 100.0	BR X, DIV L, NIGHT K/L/U/M, CONT.
A/G CMD	13	AIR TO GROUND	169.1500N		169.1500N		AIR TO GROUND COMMAND
A/G TAC	14	AIR TO GROUND	162.8125N		162.8125N		AIR TO GROUND TACTICAL
CALCORD	15	MEDICAL	156.0750N	T6 - 156.7	156.0750N	T6 - 156.7	MEDEVAC COORDINATION
AIRGUARD	16	AIRGUARD	168.6250N		168.6250N	110.9	ONE ON TRANSMIT ONLY - URGENT AIRCRAFT CONTACT

**9. Prepared by: Name:** H. Meyers/J. Dean (T)      **RESL**      *WJA*

**ICS 204**      Date/Time: 9/23/2021 2200      Personnel Count: 30

# ASSIGNMENT LIST (ICS 204 WF)

CONTROLLED UNCLASSIFIED INFORMATION//BASIC

<b>1. Incident Name:</b> <b>RIVER COMPLEX</b>	<b>2. Operational Period:</b> Date From: 09/24/21    Date To: 09/25/21 Time From: 0700          Time To: 0700	<b>3. Branch</b> <b>V</b>	<b>Division</b> <b>CONTINGENCY SOUTH</b>
--	---	------------------------------	---

<b>4. Operations Personnel:</b> Operations Section Chief: <b>John Goss/Maeve Juarez (T)</b> Branch Director: <b>Josh Eichamer</b> Division/Group Supervisor: <b>Brian Tai</b>		Night Ops: Branch Safety: <b>Larry Wright</b> Air Attack: <b>Mike Fralicks/Matt Counts</b>
--	--	--

5. Resources Assigned:		** Resources not in Bold are 24 Hour **					
Resource Identifier	LWD	Leader	Personnel	Request #	Hours	Reporting Location	
<b>GROUP #4</b>							
GRD PVT-M PETERS	10/2	<b>ALEXANDER GREY</b>	2	<b>E-506</b>	<b>0700-1900</b>	<b>TRINITY SPIKE</b>	
GRD2 PVT-JOHNSON	10/3	<b>JACK HOTTENDORF</b>	2	<b>E-543</b>	<b>0700-1900</b>	<b>TRINITY SPIKE</b>	
WTS2 PVT-DYNAMITE TACTICAL	9/26	<b>FRED SANCHEZ</b>	1	<b>E-572</b>	<b>0700-1900</b>	<b>TRINITY SPIKE</b>	
<b>GROUP #5</b>							
MAST PVT-DENNIS	9/25	<b>PAT DENNIS</b>	2	<b>E-624</b>	<b>0700-1900</b>	<b>TRINITY SPIKE</b>	
MAST PVT-DAVIS CORP. E-559	9/26	<b>CHASE NUGENT</b>	2	<b>E-559</b>	<b>0700-1900</b>	<b>TRINITY SPIKE</b>	
LDFR PVT-SW MAINT CORP	10/3	<b>GARY WRIGHT</b>	1	<b>E-569</b>	<b>0700-1900</b>	<b>TRINITY SPIKE</b>	
SKG2 PVT-ONLY A MILE	10/6	<b>BEN THOMPSON</b>	2	<b>E-537</b>	<b>0700-1900</b>	<b>TRINITY SPIKE</b>	

**6. Work Assignments:**  
Scout and construct contingency line from DP63 to DP65 and to the northwest. Construct in-direct handline from DP63 to DP61. Scout and construct contingency line east of Highway 3 from DP61 to DP70.

**7. Special Instructions:**  
Coordinate traffic control along Hwy. 3 as necessary. Mountain Medics AMBU #1 is available to Branch V DIVS.  
Continue to collaborate with READs. All natural and cultural resource concerns are flagged with orange/white candy-stripe flagging.  
Mountain Medics AMBU #1 is available to all divisions in Branch V.

8. Communications							
Name	Ch	Function	Rx Freq	Rx Tone	Tx Freq	Tx Tone	Notes
NIFC C31	B.3	COMMAND	173.0250N	T-9 100.0	163.8250N	T-9 100.0	CRAGGY PEAK
NIFC C112	B.6	COMMAND	173.6000N	T-9 100.0	162.0750N	T-9 100.0	BR V, BONANZA KING
NIFC T1	B.7	TACTICAL	168.0500N	T-9 100.0	168.0500N	T-9 100.0	BR X, DIV L, NIGHT K/L/U/M, CONT.
A/G CMD	13	AIR TO GROUND	169.1500N		169.1500N		AIR TO GROUND COMMAND
A/G TAC	14	AIR TO GROUND	162.8125N		162.8125N		AIR TO GROUND TACTICAL
CALCORD	15	MEDICAL	156.0750N	T6 - 156.7	156.0750N	T6 - 156.7	MEDEVAC COORDINATION
AIRGUARD	16	AIRGUARD	168.6250N		168.6250N	110.9	ONE ON TRANSMIT ONLY - URGENT AIRCRAFT CONTACT

**9. Prepared by: Name:** H. Meyers/J. Dean (T)      RESL      *U.H.*  
**ICS 204**      Date/Time: 9/23/2021 2200      Personnel Count: 12



# ASSIGNMENT LIST (ICS 204 WF)

CONTROLLED UNCLASSIFIED INFORMATION/BASIC

<b>1. Incident Name:</b> <p style="text-align: center; font-size: 1.2em;">RIVER COMPLEX</p>	<b>2. Operational Period:</b> Date From: 09/24/21      Date To: 09/25/21 Time From: 0700              Time To: 0700	<b>3. Branch</b> <b>Division</b> <p style="text-align: center; font-size: 1.5em;">X                                  Cronan</p>
--	---	--

<b>4. Operations Personnel:</b>		Page 1 of 1
Operations Section Chief: <b>John Goss/Maeve Juarez (T)</b>	Night Ops:	
Branch Director: <b>Matt Conklin</b>	Branch Safety: <b>Larry Wright</b>	
Division/Group Supervisor: <b>Unstaffed</b>	Air Attack: <b>Mike Fralicks/Matt Counts</b>	

5. Resources Assigned:	** Resources not in Bold are 24 Hour **					
Resource Identifier	LWD	Leader	Personnel	Request #	Hours	Reporting Location

**6. Work Assignments:**  
Unstaffed

**7. Special Instructions:**

8. Communications							
Name	Ch	Function	Rx Freq	Rx Tone	Tx Freq	Tx Tone	Notes
NIFC C1	3	COMMAND	170.9750N	T-9 100.0	168.7000N	T-9 100.0	EDDY GULCH LOOKOUT
NIFC C85	6	COMMAND	173.1375N	T-9 100.0	162.5875N	T-9 100.0	BLUE RIDGE LOOKOUT
NIFC T7	12	TACTICAL	168.2500N	T-9 100.0	168.2500N	T-9 100.0	
A/G CMD	13	AIR TO GROUND	169.1500N		169.1500N		AIR TO GROUND COMMAND
A/G TAC	14	AIR TO GROUND	162.8125N		162.8125N		AIR TO GROUND TACTICAL
CALCORD	15	MEDICAL	156.0750N	T6 - 156.7	156.0750N	T6 - 156.7	MEDEVAC COORDINATION
AIRGUARD	16	AIRGUARD	168.6250N		168.6250N	110.9	
							TONE ON TRANSMIT ONLY - URGENT AIRCRAFT CONTACT

**9. Prepared by: Name:** H. Meyers/J. Dean (T)                      RESL                      *W.H.*

**ICS 204**                      Date/Time: 9/23/2021                      2200                      Personnel Count: 0

# ASSIGNMENT LIST (ICS 204 WF)

CONTROLLED UNCLASSIFIED INFORMATION//BASIC

<b>1. Incident Name:</b> <b>RIVER COMPLEX</b>	<b>2. Operational Period:</b> Date From: 09/24/21    Date To: 09/25/21 Time From: 0700    Time To: 0700	<b>3. Branch</b> <b>Division</b> <b>X</b> <b>U/K/L</b>
--	---	---

<b>4. Operations Personnel:</b>		Page 1 of 1
Operations Section Chief: <b>John Goss/Maeve Juarez (T)</b>	Night Ops:	
Branch Director: <b>Matt Conklin</b>	Branch Safety: <b>Larry Wright</b>	
Division/Group Supervisor: <b>Dave Valencia</b>	Air Attack: <b>Mike Fralicks/Matt Counts</b>	

5. Resources Assigned:	** Resources not in Bold are 24 Hour **						
Resource Identifier	LWD	Leader	Personnel	Request #	Hours	Reporting Location	
HC2 PVT-TORRES CREW 14	9/25	<b>ISMAEL LOPEZ</b>	20	<b>C-196</b>	0700-1900	ETNA ICP	
ENG3 KNF-46	10/3	<b>NICHOLAS KNIGHT</b>	5	<b>E-10</b>	0700-1900	ETNA ICP	
ENG3 KNF-357	9/26	<b>BOB HANLEY</b>	5	<b>E-681</b>	0700-1900	ETNA ICP	
ENG3 NV-CLCX-LYON-B35	9/25	<b>JOE SANTOS</b>	3	<b>E-598</b>	0700-1900	ETNA ICP	
ENG6 PVT-NATIONAL WILDLAND E-170	10/1	<b>BRIAN ENNIS</b>	3	<b>E-170</b>	0700-1900	ETNA ICP	
ENG6 PVT-LITE EM UP E-636	9/25	<b>BOB VIGER</b>	3	<b>E-636</b>	0700-1900	ETNA ICP	
ENG6 PVT-R&R FIELD SERVICES	9/29	<b>MICHAEL COX</b>	3	<b>E-687</b>	0700-1900	ETNA ICP	
DOZ3 PVT-MILE HIGH	9/26	<b>TORIN THOMPSON</b>	2	<b>E-92</b>	0700-1900	ETNA ICP	
EXCA PVT-WD HEAVY EQUIPMENT	10/3	<b>ADAM DANIELS</b>	2	<b>E-751</b>	0700-1900	ETNA ICP	
EXCA PVT-BRAD INGRAM CONSTRUCT	10/1	<b>G TORRES</b>	2	<b>E-754</b>	0700-1900	ETNA ICP	
EXCA PVT-BOB JOHNSON CONSTRUCT	10/4	<b>MIKE LAMARR</b>	2	<b>E-752</b>	0700-1900	ETNA ICP	
MAST PVT-LAP E-319	10/4	<b>KYLE PARKER</b>	2	<b>E-319</b>	0700-1900	ETNA ICP	
MAST PVT-NORTHSTATE EQUIPMENT	10/4	<b>DONOVAN HILLAN</b>	2	<b>E-753</b>	0700-1900	ETNA ICP	
CHIP-PVT-NORTH ZONE FALLERS	9/28	<b>GAGE INGRAM</b>	3	<b>E-497</b>	0700-1900	ETNA ICP	
HEQB ISBELL	10/3	<b>TY ISBELL</b>	1		0700-1900	ETNA ICP	
HEQB MOTA	10/3	<b>RAMON MOTA</b>	1		0700-1900	ETNA ICP	
HEQB (T) HAMAKER	10/5	<b>EVAN HAMAKER</b>	1	<b>O-1440</b>	0700-1900	ETNA ICP	
EMPF HUISMANN	9/26	<b>AARON HUISMAN</b>	1	<b>O-1223</b>	0700-1900	ETNA ICP	
REAF HUSTON	9/28	<b>KELCY HUSTON</b>	1	<b>O-1227</b>	0700-1900	ETNA ICP	

**6. Work Assignments:**  
 Patrol and mop-up fire perimeter from Plumbers Creek to Fox Creek to ensure fire stays within existing control lines. Back haul all excess accountable property. Maximize suppression repair efforts where appropriate. Special  
 Instructions: Backhaul all accountable property not critical to meet control objectives

**7. Special Instructions:**  
 Backhaul all accountable property not critical to meet control objectives.  
 READS will check in and out and with DIVS. Continue to collaborate with READS. All natural and cultural resource concerns are flagged with orange/white candy-stripe flagging.  
 Etna Ambulance is available to all Divisions in Branch X.

**8. Communications**

Name	Ch	Function	Rx Freq	Rx Tone	Tx Freq	Tx Tone	Notes
NIFC C1	B.1	COMMAND	170.9750N	T-9 100.0	168.7000N	T-9 100.0	EDDY GULCH LOOKOUT
NIFC C11	B.2	COMMAND	170.6875N	T-9 100.0	166.5750N	T-9 100.0	ABOVE CECILVILLE
NIFC C86	B.4	COMMAND	166.1250N	T-9 100.0	162.1750N	T-9 100.0	BRANCH V, PACKERS PEAK
R5 T4	B.10	TACTICAL	166.5500N	T-9 100.0	166.5500N	T-9 100.0	BR X, DIV K/U, BR V, DIV N, NIGHT DIV N/Q/R
A/G CMD	13	AIR TO GROUND	169.1500N		169.1500N		AIR TO GROUND COMMAND
A/G TAC	14	AIR TO GROUND	162.8125N		162.8125N		AIR TO GROUND TACTICAL
CALCORD	15	MEDICAL	156.0750N	T6 - 156.7	156.0750N	T6 - 156.7	MEDEVAC COORDINATION
AIRGUARD	16	AIRGUARD	168.6250N		168.6250N	110.9	TONE ON TRANSMIT ONLY - URGENT AIRCRAFT CONTACT

<b>9. Prepared by: Name:</b>	H. Meyers/J. Dean (T)	RESL	<i>W.H.</i>
<b>ICS 204</b>	Date/Time: 9/23/2021 2200	Personnel Count: 62	

# ASSIGNMENT LIST (ICS 204 WF)

CONTROLLED UNCLASSIFIED INFORMATION//BASIC

<b>1. Incident Name:</b>	<b>2. Operational Period:</b>	<b>3. Branch</b>	<b>Division</b>
<b>RIVER COMPLEX</b>	Date From: 09/24/21    Date To: 09/25/21 Time From: 0700    Time To: 0700	<b>X</b>	<b>M</b>
<b>4. Operations Personnel:</b>		Page 1 of 1	Mike

Operations Section Chief: <b>John Goss/Maeve Juarez (T)</b> Branch Director: <b>Matt Conklin</b> Division/Group Supervisor: <b>Rob Winkler</b>	Night Ops: Branch Safety: <b>Larry Wright</b> Air Attack: <b>Mike Fralicks/Matt Counts</b>
--	--

5. Resources Assigned:	** Resources not in Bold are 24 Hour **					
Resource Identifier	LWD	Leader	Personnel	Request #	Hours	Reporting Location
HC2IA PVT-FIRESTORM NCC19	9/29	<b>GRAHAM LOWE</b>	20	<b>C-51</b>	0700-1900	ETNA ICP
HC2-PVT-CABRERA C-212	9/29	<b>BENITO CABRERA</b>	20	<b>C-212</b>	0700-1900	ETNA ICP
HC2-PVT-CABRERA C-213	9/29	<b>LEONARDO CABRERA</b>	20	<b>C-213</b>	0700-1900	ETNA ICP
HC2 PVT-WESTCOAST REFORESTATION	10/7	<b>ANTONIO MENDEZ</b>	20	<b>C-266</b>	0700-1900	ETNA ICP
HC2 PVT-M R CONTRACTING C1	10/7	<b>THOMAS GUZMAN</b>	20	<b>C-269</b>	0700-1900	ETNA ICP
WFM2 ALMANOR CREW 1	10/1	<b>COREY BUCKLEY</b>	7	<b>O-1403</b>	0700-1900	TANGLE SPIKE
WFM2 LNF-EAGLE LAKE	9/30	<b>BEN WHEELER</b>	7	<b>O-1329</b>	0700-1900	TANGLE SPIKE
WFM2 KNF-MARBLE MOUNTAIN	10/5	<b>JEREMY ROSE</b>	7	<b>O-1479</b>	0700-1900	TANGLE SPIKE
ENG3 LST-3118	9/26	<b>JAIME CARDENAS</b>	3	<b>E-556</b>	0700-1900	ETNA ICP
ENG6 PVT-BALI-SON E-480	10/3	<b>MICHAEL BALIZAN</b>	3	<b>E-480</b>	0700-1900	ETNA ICP
ENG6 PVT-ROCKY POINT-324	9/30	<b>SETH COLBRY</b>	3	<b>E-596</b>	0700-1900	ETNA ICP
DO22 PVT-PONYTAIL EXPRESS	10/2	<b>CLOVIS HOOPER</b>	2	<b>E-386</b>	0700-1900	ETNA ICP
DO22-PVT-JOHNSON CONTRACT	9/30	<b>BRANDON FERRIS</b>	2	<b>E-391</b>	0700-1901	ETNA ICP
WTS2 PVT-RICHARDSON TREE CARE	9/29	<b>DAVID BETTS</b>	1	<b>E-353</b>	0700-1900	ETNA ICP
FMOD PVT-N. ZONE FALLERS O-1149	9/25	<b>MIKE LEE</b>	2	<b>O-1149</b>	0700-1900	ETNA ICP
FMOD PVT-MOEN TIMBER	10/1	<b>DARWIN SAXON</b>	2	<b>O-116</b>	0700-1900	ETNA ICP
TFLD JANES	9/30	<b>BRIAN JANES</b>	1	<b>O-1374</b>	0700-1900	ETNA ICP
TFLD (T) OLANDER	9/30	<b>CALEB OLANDER</b>	1	<b>O-1375</b>	0700-1900	ETNA ICP
AZ-FLG MEDICAL TEAM 1	10/1	<b>SETH GREGAR</b>	2	<b>O-1352</b>	0700-1900	ETNA ICP
SOFR(T) SHROPSHIRE	10/4	<b>BRYAN SHROPSHIRE</b>	1	<b>O-1450</b>	0700-1900	ETNA ICP
HEQB FENWICK	9/24	<b>ADELE FENWICK</b>	1	<b>O-976</b>	0700-1900	ETNA ICP
REAF BLALOCK	9/25	<b>JON BLALOCK</b>	1	<b>O-1069</b>	0700-1900	ETNA ICP
HEQB(T) COMMARTO	9/26	<b>SAM COMMARTO</b>	1	<b>O-975</b>	0700-1900	ETNA ICP

**6. Work Assignments:**  
 Patrol and mop-up existing control lines from Fox Creek bridge to DP66 through Little Mill Creek. Construct indirect control line from Little Mill Creek toward existing control line in Little Boulder Creek. Construct and secure control line in Tangle Blue to prevent additional fire spread.

**7. Special Instructions:**  
 Identify and collect equipment for backhaul.  
 READS will check in and out and with DIVS. Continue to collaborate with READs. All natural and cultural resource concerns are flagged with orange/white candy-stripe flagging.  
 Etna Ambulance is available to all Divisions in Branch X.

**8. Communications**

Name	Ch	Function	Rx Freq	Rx Tone	Tx Freq	Tx Tone	Notes
NIFC C31	B.3	COMMAND	173.0250N	T-9 100.0	163.8250N	T-9 100.0	CRAGGY PEAK
NIFC C86	B.4	COMMAND	166.1250N	T-9 100.0	162.1750N	T-9 100.0	BRANCH V, PACKERS PEAK
NIFC T5	B.9	TACTICAL	166.7250N	T-9 100.0	166.7250N	T-9 100.0	BR X, DIV M
A/G CMD	13	AIR TO GROUND	169.1500N		169.1500N		AIR TO GROUND COMMAND
A/G TAC	14	AIR TO GROUND	162.8125N		162.8125N		AIR TO GROUND TACTICAL
CALCORD	15	MEDICAL	156.0750N	T6 - 156.7	156.0750N	T6 - 156.7	MEDEVAC COORDINATION
AIRGUARD	16	AIRGUARD	168.6250N		168.6250N	110.9	TONE ON TRANSMIT ONLY - URGENT AIRCRAFT CONTACT

**9. Prepared by: Name:** H. Meyers/J. Dean (T)      RESL      *U.H.*

ICS 204      Date/Time: 9/23/2021 2200      Personnel Count: 147

# ASSIGNMENT LIST (ICS 204 WF)

CONTROLLED UNCLASSIFIED INFORMATION/BASIC

<b>1. Incident Name:</b>	<b>2. Operational Period:</b>	<b>3. Branch</b>	<b>Division</b>
<b>RIVER COMPLEX</b>	Date From: 09/24/21      Date To: 09/25/21 Time From: 0700              Time To: 0700	<b>NIGHT</b>	<b>N/Q/R</b>
<b>4. Operations Personnel:</b>		Page 1 of 1	

Operations Section Chief: <b>John Goss/Maeve Juarez (T)</b> Branch Director: Division/Group Supervisor: <b>Bill Robinson</b>	Night Ops: Branch Safety: Air Attack: <b>Mike Fralicks/Matt Counts</b>
--	--

5. Resources Assigned:	** Resources not in Bold are 24 Hour **					
Resource Identifier	LWD	Leader	Personnel	Request #	Hours	Reporting Location
ENG4 CO-FTC-413	9/29	<b>NICK MANNING</b>	3	<b>E-701</b>	1900-0700	TRINITY SPIKE
ENG4 PVT-TORCH F&S E-413	9/24	<b>STEPHEN TOLMAN</b>	3	<b>E-413</b>	1900-0700	TRINITY SPIKE
EMPF SPENCER	10/1	<b>CHAD SPENCER</b>	1	<b>O-1386</b>	1900-0700	TRINITY SPIKE

**6. Work Assignments:**  
 Patrol and monitor existing lines. Provide for structure protection as necessary. Continue direct and indirect line construction where able to do so.

**7. Special Instructions:**  
 Identify and collect equipment for backhaul.  
 All natural and cultural resource concerns are flagged with orange/white candy-stripe flagging.

8. Communications							
Name	Ch	Function	Rx Freq	Rx Tone	Tx Freq	Tx Tone	Notes
NIFC C86	B.4	COMMAND	166.1250N	T-9 100.0	162.1750N	T-9 100.0	BRANCH V, PACKERS PEAK
NIFC C112	B.6	COMMAND	173.6000N	T-9 100.0	162.0750N	T-9 100.0	BR V, BONANZA KING
R5 T4	B.10	TACTICAL	166.5500N	T-9 100.0	166.5500N	T-9 100.0	BR X, DIV K/U, BR V, DIV N, NIGHT DIV N/Q/R
A/G CMD	13	AIR TO GROUND	169.1500N		169.1500N		AIR TO GROUND COMMAND
A/G TAC	14	AIR TO GROUND	162.8125N		162.8125N		AIR TO GROUND TACTICAL
CALCORD	15	MEDICAL	156.0750N	T6 - 156.7	156.0750N	T6 - 156.7	MEDEVAC COORDINATION
AIRGUARD	16	AIRGUARD	168.6250N		168.6250N	110.9	TONE ON TRANSMIT ONLY - URGENT AIRCRAFT CONTACT

<b>9. Prepared by: Name:</b>	H. Meyers/J. Dean (T)	RESL	<i>W.H.</i>
<b>ICS 204</b>	Date/Time: 9/23/2021	2200	Personnel Count: 7

# ASSIGNMENT LIST (ICS 204 WF)

CONTROLLED UNCLASSIFIED INFORMATION//BASIC

<b>1. Incident Name:</b> <p style="text-align: center; font-weight: bold;">RIVER COMPLEX</p>	<b>2. Operational Period:</b> Date From: 09/24/21      Date To: 09/25/21 Time From: 0700              Time To: 0700	<b>3. Branch</b> <b>Division</b> <p style="text-align: center; font-weight: bold;">NIGHT                      U/K/L/M</p>
---	---	--

<b>4. Operations Personnel:</b>		Page 1 of 1
Operations Section Chief: <b>John Goss/Maeve Juarez (T)</b> Branch Director: Division/Group Supervisor: <b>Bill Robinson</b>	Night Ops: Branch Safety: Air Attack: <b>Mike Fralicks/Matt Counts</b>	

5. Resources Assigned:	** Resources not in Bold are 24 Hour **					
Resource Identifier	LWD	Leader	Personnel	Request #	Hours	Reporting Location
HC2-PVT-CALDERON-CFS#1	9/27	<b>ARTURO CALDERON</b>	20	<b>C-210</b>	1900-0700	ETNA ICP
ENG3 CO-CDFS-432	9/25	<b>PHILIP STEVENS</b>	4	<b>E-639</b>	1900-0700	ETNA ICP
ENG6 PVT-ROCKY POINT-117	10/1	<b>DANNY ROGERS</b>	3	<b>E-289</b>	1900-0700	ETNA ICP
ENG6 PVT-OUTBACK E-420	9/25	<b>RICK MANCHESTER</b>	3	<b>E-420</b>	1900-0700	ETNA ICP
EMTF SHARKEY	9/26	<b>LIAM SHARKEY</b>	1	<b>O-1134</b>	1900-0700	ETNA ICP

**6. Work Assignments:**  
Patrol and monitor existing lines. Provide for structure protection as necessary. Continue direct and indirect line construction where able to do so.

**7. Special Instructions:**  
Identify and collect equipment for backhaul. All natural and cultural resource concerns are flagged with orange/white candy-stripe flagging. Mountain Medics AMB#2 is available to Divisions U/K/L/M.

8. Communications							
Name	Ch	Function	Rx Freq	Rx Tone	Tx Freq	Tx Tone	Notes
NIFC C1	B.1	COMMAND	170.9750N	T-9 100.0	168.7000N	T-9 100.0	EDDY GULCH LOOKOUT
NIFC C11	B.2	COMMAND	170.6875N	T-9 100.0	166.5750N	T-9 100.0	ABOVE CECILVILLE
NIFC C86	B.4	COMMAND	166.1250N	T-9 100.0	162.1750N	T-9 100.0	BRANCH V, PACKERS PEAK
NIFC T5	B.9	TACTICAL	166.7250N	T-9 100.0	166.7250N	T-9 100.0	BR X, DIV M
A/G CMD	13	AIR TO GROUND	169.1500N		169.1500N		AIR TO GROUND COMMAND
A/G TAC	14	AIR TO GROUND	162.8125N		162.8125N		AIR TO GROUND TACTICAL
CALCORD	15	MEDICAL	156.0750N	T6 - 156.7	156.0750N	T6 - 156.7	MEDEVAC COORDINATION
AIRGUARD	16	AIRGUARD	168.6250N		168.6250N	110.9	TONE ON TRANSMIT ONLY - URGENT AIRCRAFT CONTACT

<b>9. Prepared by: Name:</b>	H. Meyers/J. Dean (T)	RESL	W.A.	
<b>ICS 204</b>	Date/Time: 9/23/2021	2200	Personnel Count:	31

AIR OPERATIONS SUMMARY		PREPARED BY: Terry Harris	PREPARED DATE/TIME: 9/23/2021	1800								
1. INCIDENT NAME: RIVER COMPLEX		SUNRISE: 7:01	SUNSET: 7:06									
2. OPERATIONAL PERIOD DATE/TIME: 9/24/21		0800-2000										
<p>3. REMARKS (Safety Notes, Hazards, Air Operations Special Equipment, etc.)</p> <p>-ALL FIREFIGHTING AIRCRAFT NEED TO SQUAWK 1255.</p> <p>-HEADS UP WHEN PERFORMING WATER DROPS AROUND CREWS ON THE GROUND</p> <p>-MAINTAIN CLEAR COMMUNICATIONS</p> <p>-CREWS STAY AWAY FROM WATER DROPS INCLUDING APPROACH AND DEPARTURES</p> <p>086 TRINITY CENTER AIRPORT CLOSED RIU 08/223</p> <p>A-104 SERVICE TEMPORARY AIRPORT CONTROL TOWER 122.225 CLASS D RIU 09/021</p> <p>TRINITY LAKE APPROVED N30 58.271' X 122 40.6381'</p> <p>HELIBASE INFORMATION: SCOTT VALLEY 41° 33.47' x 122° 51.30 HOGE 2728'</p> <p>TRINITY CENTER HELIBASE - MIRB 40° 58.97' x 122° 41.62' HIGE 2390'</p> <p>EMAIL DAILY COSTS TO: <a href="mailto:Robert.taylor2@usda.gov">Robert.taylor2@usda.gov</a> <a href="mailto:andrea_sanchez@firenet.gov">andrea_sanchez@firenet.gov</a> <a href="mailto:nopsaviation@gmail.com">nopsaviation@gmail.com</a></p>												
4. MEDEVAC A/C:		5. TFR Information										
TRINITY CENTER HELIBASE		A-272										
SHORT HAUL 38HX		Polygon										
PHONE 307-259-3397		Altitude: 12,500										
MAKE/MODEL AS350 B3		NOTAMS: 1/6436										
REDDING		Frequency: RX & TX 123.6250 AM										
NIGHT HOIST												
GUARD 822												
530-551-1222												
UH-60												
REFERENCE MEDICAL PLAN FOR ADDITIONAL INFO												
8. TANKERS												
FOUR SEATS BASED AT SIX												
SEMG: Sidney Brown 239-707-1442												
N8524H (T-823) AT-802 (A-210)												
N174HL (T-974) AT-802 (A-211)												
N90024 (T-883) AT-802 (A-212)												
N896WP (T-896) AT-802 (A-213)												
TWO CL-415 BASED AT CIC												
MANAGER: Billy Groves (405-598-7161)												
John Escalera (T) 760-443-0859												
N392AC (S-261) A-255												
N385AC (S-263) A-256												
UASP 31												
Jordan Black 865-250-3128												
7. FREQUENCIES		Trinity Center Helibase										
Phone	AM	FM	FAA N#	TY	MAKE/MODEL	BASE	AVAIL	START	REMARKS			
936-366-4239	AM	FM	N9125M	1	CH64				A-93 EU/TANK			
909-907-2677	AM	FM	N462WY	1	CH46E				A-91 CWN/BUCKET			
805-440-6186	AM	FM	N205RH	2	BELL 206A1				A-170 EU/BUCKET/LL			
559-760-8379	AM	FM	46HX	3	BELL 487				A-218 CWN/LL/BUCKET			
530-864-0202	AM	FM	38HX	3	ASTAR B3				A-70 EU/SHORT HAUL/BUCKET			
406-270-7437	AM	FM	N38HX	3	ASTAR B3				A-70 EU/SHORT HAUL/BUCKET			
775-220-6364	FM	FM										
530-905-0024	FM	FM										
775-220-1240	FM	FM										
714-745-1928	FM	FM										
702-556-2255	FM	FM										
936-433-9694	FM	FM										
907-252-1587	FM	FM										
9. HELICOPTERS		Scott Valley Helibase										
TY	MAKE/MODEL	BASE	START	AVAIL	REMARKS	FAA N#	TY	MAKE/MODEL	BASE	AVAIL	START	REMARKS
1	S-61A				2-80 EU/TANK	N9125M	1	CH64				A-93 EU/TANK
1	S-61N				A-254 CWN	N462WY	1	CH46E				A-91 CWN/BUCKET
1	CH47-D			TBD	A-237 EU/TANK	N205RH	2	BELL 206A1				A-170 EU/BUCKET/LL
1	CH47-D			TBD	A-204 EU/BUCKET	46HX	3	BELL 487				A-218 CWN/LL/BUCKET
2	BELL 205 A1				A-162 EU/BUCKET	38HX	3	ASTAR B3				A-70 EU/SHORT HAUL/BUCKET
3	ASTAR 350 B3				HLCO	N38HX	3	ASTAR B3				A-70 EU/SHORT HAUL/BUCKET
3	ASTAR 350 B3				A-193 EU/RECON/BUCKET/HLCO							
3	BELL 407				A-191 CWN/IR/BUCKET/RECON							

INCIDENT RADIO COMMUNICATIONS PLAN		Incident Name: River Complex CONTROLLED UNCLASSIFIED INFORMATION//BASIC				Date/Time Prepared 9/23/21 1123	Operational Period Date/Time 9/24/21 0700 to 9/25/21 0700		
BR V/IX v5									
Ch #	Function	Channel Name/Trunked Radio System Talkgroup	Assignment	RX Freq	RX Toner/NAC	TX Freq	Tx Toner/NAC	Mode A, D or M	Remarks
1	COMMAND	NIFC C-1	ALL RESOURCES	170.9750	T-9 100.0	168.7000	T-9 100.0	A	EDDY GULCH L/O
2	COMMAND	NIFC C-11	ALL RESOURCES	170.6875	T-9 100.0	166.5750	T-9 100.0	A	ABOVE CECILVILLE
3	COMMAND	NIFC C-31	ALL RESOURCES	173.0250	T-9 100.0	163.8250	T-9 100.0	A	CRAGGY PEAK
4	COMMAND	NIFC C-86	ALL RESOURCES	166.1250	T-9 100.0	162.1750	T-9 100.0	A	PACKERS PEAK
5	COMMAND	NIFC C-97	BRANCH V	168.1375	T-9 100.0	165.1500	T-9 100.0	A	ROZ POINT
6	COMMAND	NIFC C-112	BRANCH V	173.6000	T-9 100.0	162.0750	T-9 100.0	A	BONANZA KING
7	TACTICAL	NIFC T1	CONTINGENCY	168.0500	T-9 100.0	168.0500	T-9 100.0	A	CONTINGENCY
8	TACTICAL	NIFC T3	DIV S, DIV T	168.6000	T-9 100.0	168.6000	T-9 100.0	A	
9	TACTICAL	NIFC T5	DIVISION M	166.7250	T-9 100.0	166.7250	T-9 100.0	A	NIGHT U/K/L/M
10	TACTICAL	R5 T-4	DIV U/L/K, DIV N	166.5500	T-9 100.0	166.5500		A	NIGHT N/Q/R
11	TACTICAL	R5 T-5	DIVISION Q	167.1125	T-9 100.0	167.1125		A	
12	TACTICAL	R5 T-6	DIVISION R	168.2375	T-9 100.0	168.2375		A	
13	AIR TO GROUND	A/G CMD	DIV SUP & ABOVE	169.1500		169.1500		A	DIV SUP & ABOVE
14	AIR TO GROUND	A/G TAC	ALL RESOURCES	162.8125		162.8125		A	
15	AIR TO GROUND	CALCORD	ALL RESOURCES	156.0750	T-6 156.7	156.0750	T-6 156.7	A	
16	AIR GUARD	AIR GUARD	ALL RESOURCES	168.6250		168.6250	T-1 110.9	A	EMERGENCY TO AIRCRAFT

**CONTROLLED UNCLASSIFIED INFORMATION//BASIC**

Prepared By (Communications Unit) *K. Harper* *COML*  
 Klamath National Forest  
 Kevin Harper, COML 661-330-0209 **24 HOUR RIVER COMMUNICATIONS PHONE LINE: 530-467-1509**

INCIDENT RADIO COMMUNICATIONS PLAN		Incident Name: River Complex CONTROLLED UNCLASSIFIED INFORMATION//BASIC				Date/Time Prepared 9/23/21 1122	Operational Period Date/Time 9/24/21 0700 to 9/25/21 0700		
BR I v5		Assignment		RX Freq	RX Tone/NAC	TX Freq	Tx Tone/NAC	Mode A, D or M	Remarks
Ch #	Function	Channel Name/Trunked Radio System Talkgroup	Assignment	RX Freq	RX Tone/NAC	TX Freq	Tx Tone/NAC	Mode A, D or M	Remarks
1	COMMAND	SALMON	IA USE	172.4000		164.1250	T-6 156.7	A	KNF
2	COMMAND	RIVER	IA USE	172.2500		165.0750	T-7 167.9	A	KNF
3	COMMAND	NIFC C-1	ALL RESOURCES	170.9750	T-9 100.0	168.7000	T-9 100.0	A	EDDY GULCH L/O
4	COMMAND	NIFC C-11	ALL RESOURCES	170.6875	T-9 100.0	168.5750	T-9 100.0	A	ABOVE CECILVILLE
5	COMMAND	NIFC C-31	ALL RESOURCES	173.0250	T-9 100.0	163.8250	T-9 100.0	A	Craggy Peak
6	COMMAND	NIFC C-85	CRONAN	173.1375	T-9 100.0	162.5875	T-9 100.0	A	BLUE RIDGE L/O
7	COMMAND	NIFC C-86	BRANCH V	166.1250	T-9 100.0	162.1750	T-9 100.0	A	PACKERS PEAK
8	TACTICAL	NIFC T1	CONTINGENCY	168.0500	T-9 100.0	168.0500	T-9 100.0	A	
9	TACTICAL	NIFC T3	DIV. S, DIV T	168.6000	T-9 100.0	168.6000	T-9 100.0	A	
10	TACTICAL	NIFC T5	DIV. M	166.7250	T-9 100.0	166.7250	T-9 100.0	A	
11	TACTICAL	NIFC T6		166.7750	T-9 100.0	166.7750	T-9 100.0	A	
12	TACTICAL	NIFC T7	CRONAN	168.2500	T-9 100.0	168.2500	T-9 100.0	A	
13	AIR TO GROUND	A/G CMD	DIV SUP & ABOVE	169.1500		169.1500		A	DIV SUP & ABOVE
14	AIR TO GROUND	A/G TAC	ALL RESOURCES	162.8125		162.8125		A	
15	AIR TO GROUND	CALCORD	ALL RESOURCES	156.0750	T-6 156.7	156.0750	T-6 156.7	A	
16	AIR GUARD	AIR GUARD	ALL RESOURCES	168.6250		168.6250	T-1 110.9	A	
CONTROLLED UNCLASSIFIED INFORMATION//BASIC									
Prepared By (Communications Unit)					Klamath National Forest				
Kevin Harper, COML 661-330-0209					24 HOUR RIVER COMMUNICATIONS PHONE LINE: 530-467-1509				

*Kevin Harper COML*



<b>MEDICAL PLAN (206)</b>	1. INCIDENT NAME: <b>River Complex</b>	2. DATE PREPARED: <b>September 23, 2021</b>	3. TIME PREPARED: <b>1700</b>	4. OPERATIONAL PERIOD <b>09/24/21 0700-1900</b>
---------------------------	---	--	----------------------------------	--

5. INCIDENT MEDICAL AID STATIONS			
MEDICAL AID STATIONS	LOCATION		ALS
Medical Trailer	ICP		YES NO
Medical Trailer	Trinity Spike		X

6. TRANSPORTATION				
A. Ground Ambulance				
NAME	LOCATION	PHONE	ALS	
Mountain Medics AMB #1 (Days)	Branch V (Spiked at Trinity Spike)	River Communications	Yes No	
Mountain Medics AMB #2 (Nights)	Branch X (At ICP)	River Communications	X	
Etna Ambulance (Days)	Branch X (At ICP)	River Communications		X
B. Air Ambulance				
NAME	PHONE #	LOCATION / TYPE	ALS	
Air Ambulance	911 / (530)841-4600	Type 3 / Air Ambulance Only	Yes No	
CHP	911 / (530)841-4600	Type 3 / Daytime Hoist	X	
Helicopter 8HX	911 / (530)841-4600	Type 3 / Daytime Short Haul		X
Coast Guard	911 / (530)841-4600	Type 2 / Day and Night Hoist		X
National Guard 820	911 / (530)841-4600	Type 1 / Day and Night Hoist	X	

7. HOSPITALS										
NAME	ADDRESS	TRAVEL TIME		PHONE	TRAUMA		HELIPAD		BURN CENTER	
		AIR	GR ND		Yes	No	YES	NO	YES	NO
Trinity General Hospital	60 Easter Avenue, Weaverville, CA 96093 Lat/Long 40 44.17, 122 56.22	35 Min	2 Hr.	(530) 623-5541	LVL		X			X
Fairchild Medical Center	444 Bruce Street, Yreka, CA 96097 Lat/Long 41 43.20, 122 38,70	15Min	30 min	(530) 842-4121	LVL 4		X			X
Asante Rogue Regional Medical Center	2825 East Barnett Road, Medford OR 97504 Lat/Long 42 19.10, 122 49.50	25 Min	2 Hr.	(541)789-7132	LVL 2		X			X
Mercy Medical Center Redding	2175 Rosaline Ave. Clairmont Hgts, Redding, CA 96001 Lat/Long 40 34.290, 122 23.670 (7CA3)	25 Min	2 Hr.	(530) 225-7214	LVL 2		X			X
UC Davis Medical Center	2315 Stockton Blvd. Sacramento, CA Lat/Long 38 33.28, 121 27.35 (3CLO)	2 Hr.	4.5 Hr.	(916) 734-3892	LVL 1		X		X	

8. MEDICAL EMERGENCY PROCEDURES	
<p><b>LINE "MEDICAL-EMERGENCY" PLAN:</b></p> <ul style="list-style-type: none"> <li>- Crew Supervisor to contact Division Supervisor/Operations with: <ul style="list-style-type: none"> <li>• Patient Complaint, Condition and Location via Tactical or Command frequency. Priority 1/Red &amp; 2/Yellow Patients trigger Incident within Incident (IWI).</li> </ul> </li> <li>- Division Supervisor/Operation contacts Communications/Dispatch: <ul style="list-style-type: none"> <li>• Division Supervisor or POC* will run "Medical –Emergency" on the Command frequency.</li> <li>• Division Supervisor or POC* to use "Medical Incident Report" worksheet on back of this page or back of IRPG.</li> <li>• Communication contacts Medical Unit Leader on the Command frequency or cell phone (562) 252-2168 (Medical Emergencies Only).</li> </ul> </li> </ul> <p>POC* (Point of Contact) and/or Operations</p>	<p><b>LINE "NON-EMERGENCY INCIDENT" PLAN:</b></p> <ul style="list-style-type: none"> <li>- Crew Supervisor to contact Division Supervisor with: <ul style="list-style-type: none"> <li>• Patient Complaint, Condition and Location via Tactical or Command frequency. <b>Priority 3/Green, (Minor) Patients do not</b> trigger Incident within Incident (IWI).</li> </ul> </li> <li>- Division Supervisor to contact Communications/dispatch: <ul style="list-style-type: none"> <li>• Division Supervisor or POC* will run "Non-Emergency Incident" on the Command frequency.</li> <li>• Division Supervisor or POC* will use "Medical Incident Report" worksheet on the back of this page or back of IRPG.</li> <li>• Communications contacts Medical Unit Leader on the Command frequency or cell phone (562) 252-2168 (For medical related incidents only).</li> </ul> </li> </ul> <p><b>IN-CAMP – 24 HOUR MEDICAL</b></p> <ul style="list-style-type: none"> <li>- Contact 911 and Medical Unit (562) 252-2168 with: <ul style="list-style-type: none"> <li>• Patient Complaint, Condition and Location</li> </ul> </li> </ul>

9. PREPARED BY Scott Mohlenbrok MEDL 	10. REVIEWED BY Safety Officer  SOFI
---	--

**Medical Incident Report**

FOR A **NON-EMERGENCY INCIDENT**: WORK THROUGH CHAIN OF COMMAND TO REPORT AND TRANSPORT INJURED PERSONNEL AS NECESSARY.

FOR A **MEDICAL EMERGENCY**: IDENTIFY ON SCENE INCIDENT COMMANDER BY NAME AND POSITION AND ANNOUNCE **"MEDICAL EMERGENCY"** TO INITIATE RESPONSE FROM COMMUNICATIONS

**Use the following items to communicate situation to communications/dispatch.**

**1. CONTACT COMMUNICATIONS / DISPATCH** (Verify correct frequency prior to starting report)

*Ex: "Communications, Div. Alpha. Stand-by for Emergency Traffic."*

**2. INCIDENT STATUS:** Provide incident summary (including number of patients) and command structure.

*Ex: "Communications, I have a Red priority patient, unconscious, struck by a falling tree.*

*Requesting air ambulance to Forest Road 1 at (Lat./Long.)*

*"This will be the Trout Meadow Medical Incident, IC is TFLD Jones. EMT Smith is providing medical care."*

Severity of Emergency AND Transport Priority (priority 1, 2, 3)	<input type="checkbox"/> <b>RED / PRIORITY 1 Life or limb threatening injury or illness. Evacuation need is IMMEDIATE</b> <i>Ex: Unconscious, difficulty breathing, bleeding severely, 2° - 3° burns more than 4 palm sizes, heat stroke, disoriented.</i>	
	<input type="checkbox"/> <b>YELLOW / PRIORITY 2 Serious Injury or illness. Evacuation may be DELAYED if necessary.</b> <i>Ex: Significant trauma, unable to walk, 2° - 3° burns not more than 1-3 palm sizes.</i>	
	<input type="checkbox"/> <b>GREEN / PRIORITY 3 Minor Injury or illness. Non-Emergency transport</b> <i>Ex: Sprains, strains, minor heat-related illness.</i>	
Nature of Injury or Illness & Mechanism of Injury		<i>Brief Summary of Injury or Illness (Ex: Unconscious, Struck by Falling Tree)</i>
Transport Request		<i>Air Ambulance / Short Haul/Hoist Ground Ambulance / Other</i>
Patient Location		<i>Descriptive Location &amp; Lat. / Long. (WGS84)</i>
Incident Name		<i>Geographic Name + "Medical" (Ex: Trout Meadow Medical)</i>
On-Scene Incident Commander		<i>Name of on-scene IC of Incident within an Incident (Ex: TFLD Jones)</i>
Crew Patient Care		<i>Name of Care Provider (Ex: EMT Smith)</i>

**3. INITIAL PATIENT ASSESSMENT:** Complete this section for each patient as applicable (start with the most severe patient)

Agency Affiliation: (NO PATIENT NAMES)                      Federal                      Contractor                      Local Government

Patient Assessment:      Age:                      Weight:                      Chief Complaint:

(If pertinent to Injury)      Skin Signs: (color/moisture/temp)                      Level of Consciousness:                      BP:                      HR:                      Respirations:

Treatment:

**4. TRANSPORT PLAN:**

Evacuation Location (*drop point, intersection, helispot, Lat. / Long, hazards*)                      Patient's ETA to Location:

**5. ADDITIONAL RESOURCES / EQUIPMENT NEEDS:**

*Paramedic / EMT - Crews - Immobilization Devices - AED - Oxygen - Trauma Bag - IV/Fluid(s) - Splints - Rope rescue - Wheeled litter - HAZMAT - Extraction*

**6. COMMUNICATIONS: Identify State Air/Ground EMS Frequencies and Hospital Contacts as applicable**

Function	Channel Name/Number	Receive (RX)	Tone/NAC *	Transmit (TX)	Tone/NAC *
COMMAND					
AIR-TO-GRND					
TACTICAL					

**7. CONTINGENCY: Considerations:** *If primary options fail, what actions can be implemented in conjunction with primary evacuation method? Be thinking ahead.*

**8. ADDITIONAL INFORMATION:** *Updates/Changes, etc.*

**REMEMBER:** Confirm ETA's of resources ordered. Act according to your level of training  
Be Alert - Keep Calm - Think Clearly - Act Decisively

\*\*\* Follow up with MEDL upon return to ICP \*\*\*



## **Human Resources Message**

**September 24, 2021**

### **Be an Employee Advocate**

Everyone on this incident has their assignments that must be carried out in order to achieve our mission of protecting life, resources and property. Of course, we cannot accomplish our mission when one of our fellow team members may be experiencing a work and/or personal matter that is impacting their ability to stay focused and remain positive.

If you witness a team member who may be having a rough time, become their advocate. Ask them how things are going. See if they want to take a break to talk about what's going on. Give them the opportunity to vent and to share with you their concern. You may be the person that brings them back to where they need to be and where we need them to be to help meet our objectives.



**Julie Nelson, HRSP**  
**720-512-7591**



## USDA Forest Service



# Free COVID-19 tests are available for wildland fire personnel!!!

**Not just for Forest Service personnel!** Anyone associated with wildland fire work is welcome.

To get tested for free, go to the

### **Klamath National Forest Headquarters (aka “Klamath Supervisor’s Office”)**

1711 South Main St, Yreka, CA 96097 - 0630hrs to  
2030hrs every day (but hours are flexible)!

- > Once at site, go to registration sign and someone will enter intake form.*
- > Proceed to Testing location on same site to have rapid binex test done.*
- > Stage 15 min. for results, if positive, a PCR test will be done.*
- > Stage another 30 min., if positive, a covid advisor will assist.*

**In the interest of protecting each other and our families, we encourage testing early and often!** Please contact [testing.klamath1@gmail.com](mailto:testing.klamath1@gmail.com) if you have questions or comments.

*A core value of the Forest Service is safety. This testing availability is an additional step in safeguarding human life and protecting our most valuable resources. Our Code and Commitments include being trusted to “do right” by each other and the communities we serve.*

## **COVID-19 Vaccinations are Available While on the Incident**

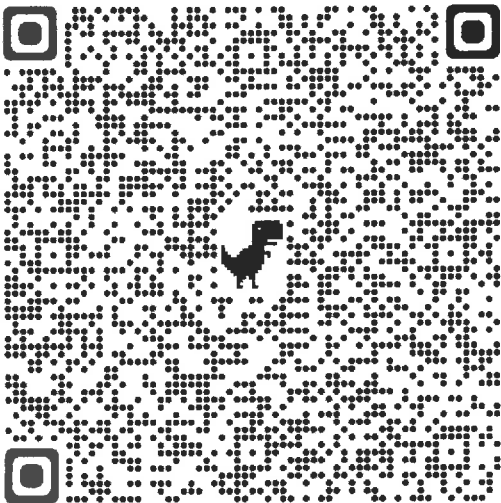
**Free vaccines are available at the following locations in the area surrounding the River Complex:**

Walmart Inc #10-1630 – (530) 842-7330  
1906 Fort Jones Rd, Yreka, CA 96097  
Check appointment availability (vaccines in stock)  
21.13 miles

Fairchild Medical Center – (530) 841-6291  
444 Bruce St, Yreka, CA 96097  
Check appointment availability (vaccines in stock)  
22.22 miles

Rite Aid #RA106104 – (530) 842-5596  
807 S Main St, Yreka, CA 96097  
COVID-19 appointments available  
22.78 miles

Rite Aid #RA106103 – (530) 926-3826  
310 W Lake St, Mt Shasta, CA 96067  
COVID-19 appointments available  
31.95 miles



**Use this QR Code to  
access vaccination  
locations nearest your  
assignment on the  
River Complex**

**If you choose to get vaccinated while on the incident, compensatory time will be provided.**

# River Complex Message Board

River Communication's 24 hours phone, 530-467-1509

In Camp Medical 24 Hours 911 and 562-252-2168

Hours of Operations

Medical Trailer ICP 0600-2200

Medical Trailer Trinity Spike 0600-2200

Food 0530-0900 / 1800-2130

Showers 0500-1200 / 1400-2300

Laundry 0500-2200

Fuel ICP, 0600-1300 / 1500-2200

Fuel Trinity Spike 0630-1100 / 1400-2100

Supply Unit 0600-2200

## For all Camps

**NO SLEEPING IN VEHICLE PARKING AREA  
OR DRIVING IN SLEEPING AREA.**

## River Complex Food Menu

### Dinner

9/24 Prime Rib

### Breakfast

9/24 Bell Pepper Eggs

9/25 Scrambled Eggs



## To receive mail please address:

Your Name O or E #

River Complex (ICP or spike camp)

C/O General Delivery

Etna, CA 96027

## Have Photos? Let us share them to the world for you!

Send photos of firefighters working on in/direct line, laying hose, structure protection, and crews actively fighting fire to [2021.river@firenet.gov](mailto:2021.river@firenet.gov)

Please note the location(s) especially if you are near a community, the photographers name, and be sure they have on proper PPE.

Thank you in advance!

## A reminder from the Finance Section:

Please email finance related documents if you are not able to turn in hard copies to:

[2021.river.finance@firenet.gov](mailto:2021.river.finance@firenet.gov)

Please make sure your shift tickets include:

**\*\*Resource Order Number\*\***

**\*\*Correct dates and times\*\***

**\*\*Employee should total hours worked and circle the total\*\***

**\*\*Signed by your Incident Supervisor\*\***

**\*\*Justifications are required for all\*\***

**---Hazard Pay---**

**--Excessive Shifts--**

**--No meal breaks shown--**



**RIVER COMPLEX  
CA-KNF-006385  
FINANCE LIST OF NEEDS**

<b>Resource Order #</b>	<b>RESOURCEID</b>	<b>DESCRIPTION OF ISSUE</b>
C-157	GRIZZLY FIREFIGHTERS INC	ONE NAME MISSING FROM CTR ON 8/30/21
E-555	JIM JOHNSON LOGGING	OPERATOR NEEDS TO SIGN A SHIFT TICKET
C-210	CALDERON FOREST SERVICES	FIX ALL TIMES ON CTRS
E-325	GRANITE COMMERCIAL	WRONG DATE AND NO SIGNATURE ON A CTR
E-473	ETNA AMBULANCE	HOURS
C-160	INBOUND LLC	WRONG START TIME/END TIME MISSING 9/20/2021
O-1351	FRY FD	NEED AGREEMENT AND RO
E-756	M PETERS	NEED INSPECT/CONTRACT/RO NEED TO CHECK IN
E-715	SPECIAL OPERATIONS GROUP	NO GOV SIGNATURE ON ST FOR 9/20/21
	GRANITE COMMERCIAL SERVICES	NO E# ON SHIFT TICKETS

09/24/2021  
TENTATIVE RELEASE  
RIVER COMPLEX US-CA-KNF-006385

EQUIPMENT

E-592 0800 (ENG6) THREE RIVERS  
E-603 0800 (ENG4) ALBANY CO 1, ROBERT  
E-617 0800 (ENG6) NATIONAL WILDLAND  
E-352 0830 (WTS2) ROCKY MOUNTAIN  
E-565 0830 (WTS3) RYAN BENTLEY LLC - T010  
E-616 0830 (ENG3) AZ-PNP - ENG-523  
E-143 0900 (STK) ESRYS  
E-240 0900 (WTS2) A-1 WATER  
E-597 0900 (ENG3) NV-HTF - 353  
E-558 0930 (MAST) NORTH STATE EQUIPMENT  
E-615 0930 (ENG6) DIAMOND  
E-387 1000 (DOZ2) AR-OUF-CW-D-221  
E-395 1000 (MISC) HEADRICK LOGGING

OVERHEAD

O-1054 0700 (MEDL) THIERRY, TREMAINE  
O-976 1600 (REAF) FENWICK, MARIA ADELE  
O-1090 1600 (SEC2) KASPAR, SUSANNA M  
O-1177 2000 (PIOF) MAGUIRE, PATTI

09/25/2021  
TENTATIVE RELEASE  
RIVER COMPLEX US-CA-KNF-006385

EQUIPMENT

E-179 0800 (WTS2) H & H FEEDERS  
E-413 0800 (ENG4) TORCH FIRE AND SECURITY  
OVERHEAD  
O-1146 0000 (TFLD) PETERMAN, FORREST  
O-1004 0700 (EMPF) SPELLMAN, DUANE  
O-1192 0800 (SEC1) FITCH, JOSHUA  
O-1159 0800 (HRSP) NELSON, JULIE FRANCES  
O-1179 0830 (PIO2) SANTA CRUZ, JESSICA  
O-993 1000 (AREP) LUQUIN, EDWARD ALEX  
O-1151 1600 (IMET) MYERS, NOAH EVERETT  
EQUIPMENT  
S-888 0800 (WTS2) PVT-WEST COAST





## FLIGHT REQUEST

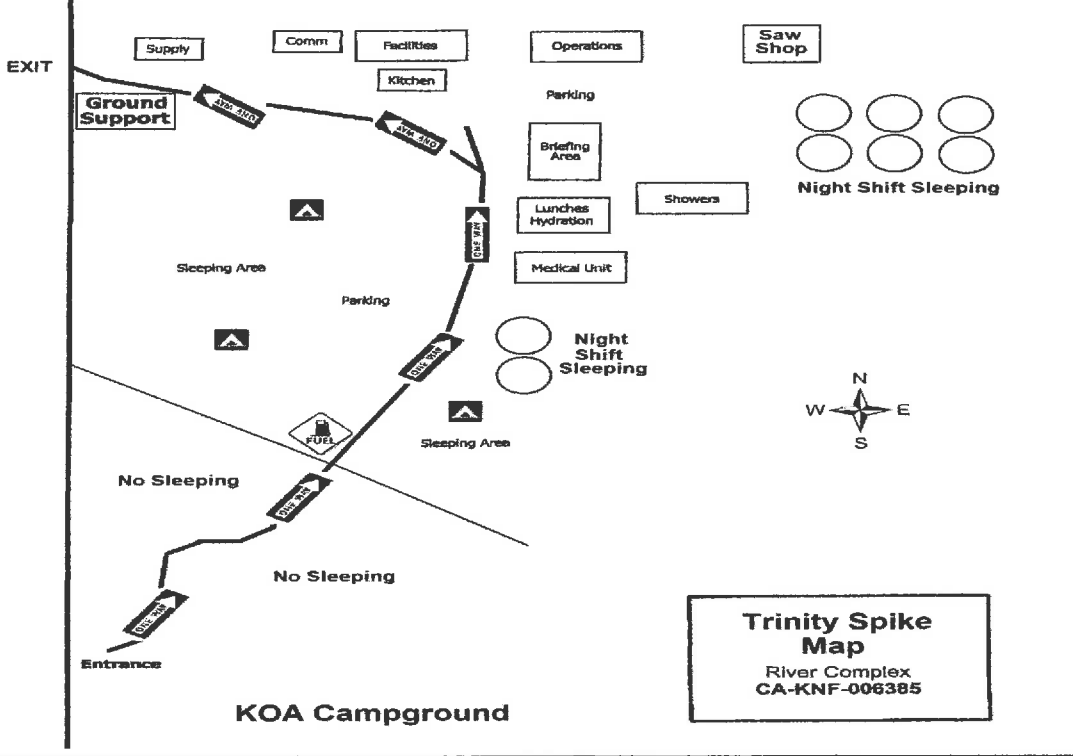
Submit 3 days prior demob date

Request Order #	
Name as shown on ID	
Date of Birth	
Cell Phone	
Male or Female	
Email Address	
Last Work Date	
Flight Date	
Departure Airport Airport Code	
Arrival Airport Airport Code	
Rental Location	
Need ride to airport?	

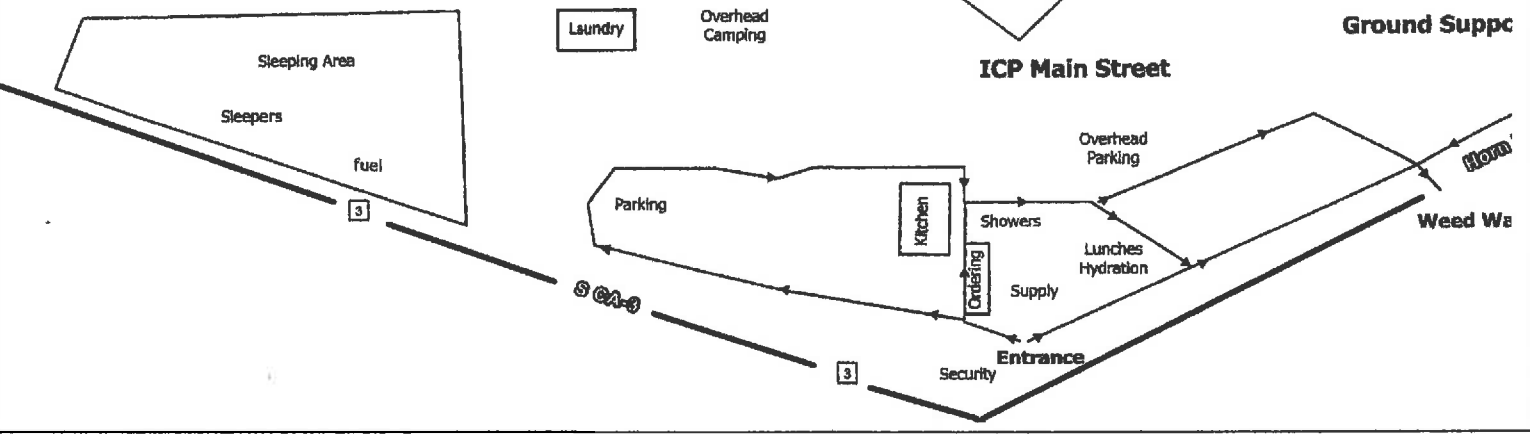
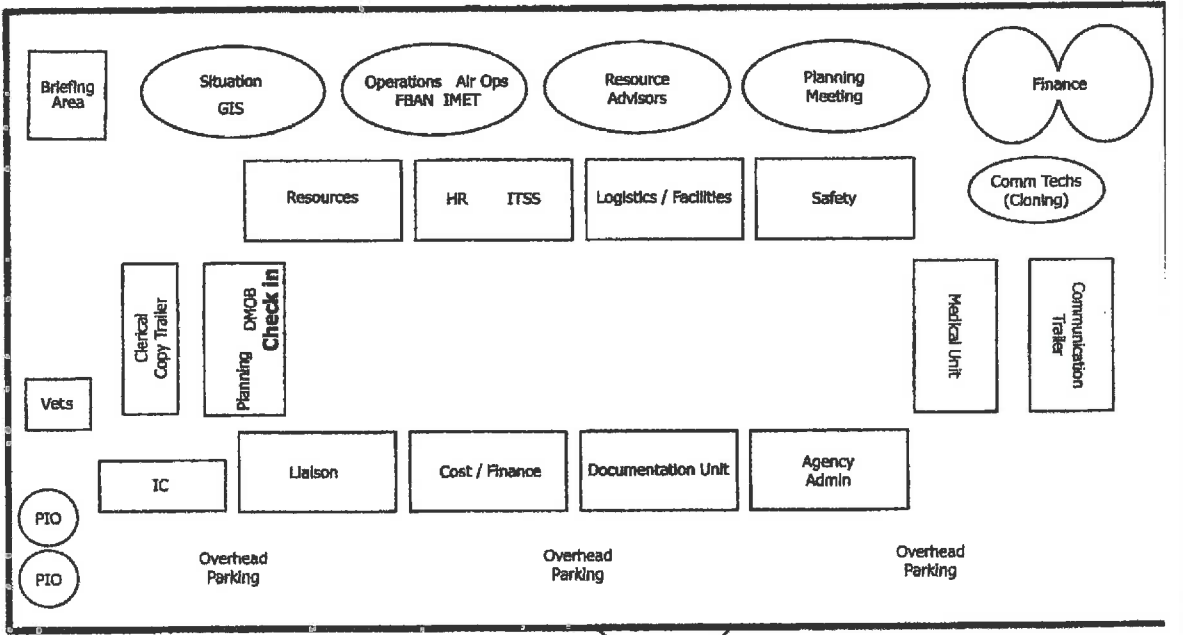
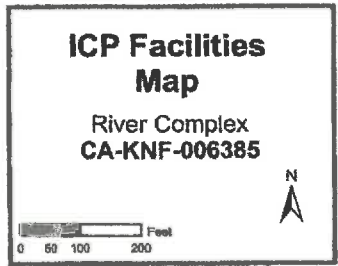
**\*\*\*\*Return this Flight Request at Least 48 hours prior to traveling to Demob \*\*\*\***

**This can be emailed if you cannot make it to Demob. email address: 2021.river.demob@firenet.gov**

KNF RIVER COMPLEX		CA TEAM 2 CONTACT INFO			
NAME	POSITION	UNIT	Primary Contact	EMAIL	
<b>COMMAND</b>					
Johnny, Nickie	ICT1	CA-ENF	530-409-9210	<a href="mailto:nickie.johnny@usda.gov">nickie.johnny@usda.gov</a>	
Day, Bea	Deputy ICT1		505-967-8835	<a href="mailto:barbara.day@usda.gov">barbara.day@usda.gov</a>	
Minton, Lucas	ICT1(t)	AZ-GCP	928-707-1940	<a href="mailto:lucas_minton@nps.gov">lucas_minton@nps.gov</a>	
Leusch, Paul	SOF1	OR-MTH	971-334-5584	<a href="mailto:paul.leusch@usda.gov">paul.leusch@usda.gov</a>	
Theune, Mike	PIO1	CA-KNP		<a href="mailto:2021.river@firenet.gov">2021.river@firenet.gov</a>	
Wyatt, Daron	PIO1(t)	CA-MNP		<a href="mailto:2021.river@firenet.gov">2021.river@firenet.gov</a>	
Ekman, Robbin	LOFR	CA-LVN	559-903-7186	<a href="mailto:Liaison.River.KNF.2021@gmail.com">Liaison.River.KNF.2021@gmail.com</a>	
<b>OPERATIONS</b>					
Goss, John Day Operations	OSC1	CA-SNF	559-908-6526	<a href="mailto:john.goss@usda.gov">john.goss@usda.gov</a>	
Juarez, Maeve Day Ops	OSC1(t)	CA-MTO	805-746-7073	<a href="mailto:mjuarez@montecitofire.com">mjuarez@montecitofire.com</a>	
Laeng, Robert Planning Ops	OSC1	CA-STF	209-352-0432	<a href="mailto:rlaeng@frontiernet.net">rlaeng@frontiernet.net</a>	
Botts, Jacob Planning Ops (t)	OSC2(t)	CA-PNF	530-736-3335	<a href="mailto:ibotts80@gmail.com">ibotts80@gmail.com</a>	
Eichamer, Josh	OSC1(t)	CA-SRF	707-601-7080		
Neels, David	OPBD	CA-MTO	805-755-8863	<a href="mailto:dneels@montecitofire.com">dneels@montecitofire.com</a>	
Conklin, Matt	OPBD	CA-ANF	626-698-8052	<a href="mailto:matthew.conklin@usda.gov">matthew.conklin@usda.gov</a>	
Winkler, Rob	DIVS	CA-NOD	530-276-3189	<a href="mailto:rwinkler@blm.gov">rwinkler@blm.gov</a>	
Hildebrand, Mike	DIVS	CA-HAY	510-460-5568	<a href="mailto:mike.hildebrand@hayward-ca.gov">mike.hildebrand@hayward-ca.gov</a>	
Akerbeg, Jake	DIVS	CA-WRP	530-638-5605		
Gavin, Andrew	DIVS		703-403-7363		
Harris, Terry	AOBD	TX-TXF	936-366-4239	<a href="mailto:terrygharris7@gmail.com">terrygharris7@gmail.com</a>	
McElfish, Kelvin	ASGS	CA-BDF	909-907-2677	<a href="mailto:Bblfdkem@hotmail.com">Bblfdkem@hotmail.com</a>	
<b>PLANS</b>					
Herzog, Walter	PSC1	CA-NOD	530-310-3209	<a href="mailto:walter_herzog@firenet.gov">walter_herzog@firenet.gov</a>	
Grove, Aaron	PSC2(t)	CA-PNF	530-394-8094	<a href="mailto:aaron.grove@usda.gov">aaron.grove@usda.gov</a>	
Nelson, Julie	HRSP		720-512-7591	<a href="mailto:julie.nelson@usda.gov">julie.nelson@usda.gov</a>	
<b>Documentation</b>	DOCL		530-467-1506		
Ferguson, Jeff	RESL	CA-ENF	530-467-1524	<a href="mailto:jtf.7170@gmail.com">jtf.7170@gmail.com</a>	
Contreras, Irma	Demob/Check In	CA-SQF	530-467-1501/1523	<a href="mailto:2021.river.demob@firenet.gov">2021.river.demob@firenet.gov</a>	
Mosley, John	SITL	CA-BIA	530-249-3889	<a href="mailto:john.mosley@bia.gov">john.mosley@bia.gov</a>	
Bass, Carvel	GISS	CA-PNF	415-412-6303	<a href="mailto:carvel24@gmail.com">carvel24@gmail.com</a>	
Burns, Dennis	FBAN	CA-STF	209-770-3783	<a href="mailto:dburns@lpfire.org">dburns@lpfire.org</a>	
Duran, David	FBAN(t)	CA-BDF	808-383-1395	<a href="mailto:david.duran@usda.gov">david.duran@usda.gov</a>	
Panno, Dominic	TNSP	CA-TNF	530-913-8251	<a href="mailto:dpanno@comcast.net">dpanno@comcast.net</a>	
<b>LOGISTICS</b>					
Crakes, Tom	LSC1	CA-LPF	805-878-1369	<a href="mailto:tcspul@hotmail.com">tcspul@hotmail.com</a>	
<b>Communications 24-hour</b>			530-467-1509		
Hodge, Jason	FACL	CA-VNC	805-444-5223	<a href="mailto:jason.hodge@ventura.org">jason.hodge@ventura.org</a>	
Johansen, Chris @Trinity Spike	LSC3	AZ-COF	928-955-9132		
Preciado, Art @Trinity Spike	FACL	CA-CNF	510-507-5902		
Wilcox, Josh @Trinity Spike	RCDM		760-458-6112		
Warren, Troy	RCDM	CA-WDL	530-848-5430	<a href="mailto:troy.warren@cityofwoodland.org">troy.warren@cityofwoodland.org</a>	
Browning, Randy	SPUL	CA-SCR	530-400-3607	<a href="mailto:rbrowning@sacfire.org">rbrowning@sacfire.org</a>	
Fitzgerald, Michael	GSUL	CA-SMF	310-866-2016	<a href="mailto:mike.fitzgerald@smgov.net">mike.fitzgerald@smgov.net</a>	
Hoffman, Myron	GSUL	CA-ANF	626-261-3191		
Morris, Henry	ORDM	CA-TLC	202-329-7781		
Harper, Kevin	COML	CA-MRP	661-330-0209	<a href="mailto:kharp911@gmail.com">kharp911@gmail.com</a>	
Fong, Gerald	ITSS	CA-CSO	916-216-5236	<a href="mailto:gfong@blm.gov">gfong@blm.gov</a>	
Flynn, Michael	INCM	CA-LFD	818-590-1518	<a href="mailto:mike.flynn@lacity.org">mike.flynn@lacity.org</a>	
	FDUL				
Mohlenbrok, Scott	MEDL	CA-GLN	562-225-7041	<a href="mailto:Scottmo24@gmail.com">Scottmo24@gmail.com</a>	
<b>FINANCE</b>					
Lee, Larry	FSC1	CA-R05	951 205 3879	<a href="mailto:lawrence.lee@usda.gov">lawrence.lee@usda.gov</a>	
Taylor, Robert	FSC2(t)	CA-BDF	909-693-2875	<a href="mailto:robert.taylor2@usda.gov">robert.taylor2@usda.gov</a>	
Falls, Tracy	TIME	CA-MNP	805-665-3327	<a href="mailto:2021.river.finance@firenet.gov">2021.river.finance@firenet.gov</a>	
Shapiro, Abby	PTRC	CA-RNP		<a href="mailto:2021.river.finance@firenet.gov">2021.river.finance@firenet.gov</a>	
Sanchez, Andrea	COST		530-467-1504		
Avilla, Cassandra	COMP(t)	CA-LPF	805-665-3327	<a href="mailto:2021.river.finance@firenet.gov">2021.river.finance@firenet.gov</a>	



Slow Down When Driving  
Pick Up Your Trash  
Recycle, It Saves Landfills



# ACTIVITY LOG (ICS 214)

1. Incident Name:	2. Operational Period: Date From:		Date To:
	Time From:		Time To:

3. Name:	4. ICS Position:	5. Home Agency (and Unit):
----------	------------------	----------------------------

6. Resources Assigned:		
Name	ICS Position	Home Agency (and Unit)

7. Activity Log:	
Date/Time	Notable Activities

8. Prepared by: Name: _____	Position/Title: _____	Signature: _____
-----------------------------	-----------------------	------------------

