

Thursday - 24 Hour

RIVER COMPLEX

CA-KNF-006385 P5N7CM

INCIDENT ACTION PLAN



Dry Lake Mountain c. 1935

Operational Period
0700 10/07/2021 to
0700 10/08/2021



Fire Information
707-596-6075

2021.river@firenet.gov



QR Code: IAPs, Maps, Check-in,
Trainee Forms, Misc. Incident
Documents, and Day Shift
Operational Briefing Zoom Link



Thursday - 24 Hour

INCIDENT OBJECTIVES (ICS 202)	1. RIVER COMPLEX	10/6/2021	3. TIME: 1700
-------------------------------	------------------	-----------	------------------

4. OPERATIONAL PERIOD (DATE/TIME): 0700 10/7/2021 to 0700 10/8/2021

5. OBJECTIVES:

Leader's Intent

Implement a full suppression strategy on the fires within the River Complex. Values at risk include human safety, communities, private timberlands, critical infrastructure, associated improvements, and wilderness resources. Apply tactics that offer the highest probability of success commensurate with resource availability.

Management Objectives

- Provide for firefighter and public safety through hazard recognition and application of the risk management process.
- Coordinate public information with the Monument fire and other local fires to provide timely and continuous information to all affected agency partners, cooperators, and to the public.
- Coordinate suppression and repair activities with incident Resource Advisors to minimize impacts to wilderness, natural and cultural resources.
- Reduce risk and limit exposure to infectious diseases by minimizing large group settings, reinforcing social distancing, wearing face coverings, and handwashing.

Control Objectives

- Keep the Cronan fire within existing control lines.
- Keep the Haypress fire within existing control lines.

Site Safety Plan Required Yes No Approved Site Safety Plan Located at: N/A

9. Attachments (if attached):

- | | | |
|---|---|--|
| <input checked="" type="checkbox"/> Incident Objectives (ICS 202) | <input checked="" type="checkbox"/> Safety Message/ICS 215A | <input checked="" type="checkbox"/> Training Message |
| <input checked="" type="checkbox"/> Organization List (ICS 203) | <input checked="" type="checkbox"/> Communications Plan (ICS 205) | <input checked="" type="checkbox"/> Tentative Demob |
| <input checked="" type="checkbox"/> Weather Forecast | <input checked="" type="checkbox"/> Human Resource Message | <input checked="" type="checkbox"/> Transportation Map |
| <input checked="" type="checkbox"/> Fire Behavior Forecast | <input checked="" type="checkbox"/> Public Information Message | <input checked="" type="checkbox"/> Camp Map |
| <input checked="" type="checkbox"/> Assignment List (ICS 204) | <input type="checkbox"/> Finance Message | <input checked="" type="checkbox"/> Unit Log 214 |
| <input checked="" type="checkbox"/> Air Ops (ICS 220) | <input checked="" type="checkbox"/> Resource Advisor Information | <input checked="" type="checkbox"/> COVID Messaging |
| | | <input checked="" type="checkbox"/> Medical Plan (ICS 206) |



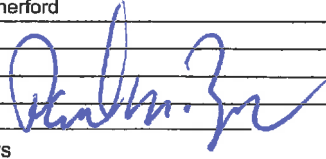
10. PREPARED BY (PLANNING SECTION CHIEF)

Paul Zerr (T)

11. APPROVED BY (INCIDENT COMMANDER)

Tom Clemo

ORGANIZATION ASSIGNMENT LIST (ICS 203)

1. Incident Name: RIVER COMPLEX		2. Operational Period: Date From: 10/7/2021		Date To: 10/8/2021	
		Time From: 0700		Time To: 0700	
3. Incident Commander(s) and Command Staff:			7. Operation Section:		
IC/UC's	Jimmy Harris	Day Operations	Scott Grasmick		
Deputy	Tom Clemo/Jon Lucas	Planning Operations	Stephen Fillmore		
Safety Officer	T. Zeulner/R. Bertram/B. Kaiser	Night Operations			
Information Officer	Tom Stokesberry/Debra Carlisi (T)				
Liaison Officer	Bob Neumann/Ray Cablayan				
4. Agency/Organization Representatives:		Branch			
Agency/Organization	Name	Division/Group	M/N/O	Richard Dykhouse	
Klamath NF	Rachel Smith/Ruth D'Amico	Division/Group	Q/R/S/T	Unstaffed	
Shasta-Trinity NF	Rachel Birkey/Steve Kozel	Division/Group	U/K/L	Unstaffed	
CalFire SKU	Phil Anzo/Luke Kendall	Branch	CONTINGENCY/REPAIR	Joe Tieso	
Siskiyou County SO/OES	Bryan Schenone	Division/Group	CRONAN	David Barnett	
Trinity County SO	UnderSheriff Brian Ward	Division/Group	STODDARD GROUP	Unstaffed	
CHP	Brandon Lale	Division/Group	COFFEE GROUP	Stan Hill	
Cal Trans Siskiyou	Roger Matthews	Division/Group	RAMSHORN GROUP	Jere Classay	
Cal Trans Trinity	Ron Isabel	Division/Group	BEAR COUNTRY GROUP	Brandon Paige/Craig Newell (T)	
Private Forestry	Darin Quigley	Division/Group	PACKERS GROUP	Unstaffed	
Lead READ	Frank Carus	Division/Group			
Lead ARCH	Justin Rhode	Division/Group			
CAL OES	Jason Vela/Robert Goyeneche	Division/Group			
Covid Advisor	Scott Peedle	Division/Group			
CCC	Alex Luquin	Division/Group			
		Division/Group			
		Division/Group			
5. Planning Section:		Division/Group			
Chief	John Germanetti/Paul Zerr (T)	Division/Group			
Demobilization Unit	Sylvia Moreno (T)	Division/Group			
Resource Unit	Travis Ederer	Division/Group			
Situation Unit	Christina Barba/Mike Held	Division/Group			
Documentation Unit	Leonard Pratt/Elvi Conti-Nieves (T)	Division/Group			
Status Check-In	Sylvia Moreno (T)/John Wakefield (T)	Division/Group			
Human Resource Spec.		Division/Group			
ITSS		Division/Group			
Fire Behavior Analyst	Nic Elmquist	Division/Group			
Incident Meteorologist	Bob Nester	Division/Group			
GISS	Jonathan Swett (T)	Air Operations Branch		John Crotty	
Training Specialist	Chad Englert (T)		Air Support Group Supervisor	Isidoro Solis/Shane Hagen (T)	
			Air Tactical Group Supervisor	Jeff Keiser	
			Scott Valley Helibase Manager	Lee Stewart	
6. Logistics Section					
Chief	David Alicea				
Supply Unit	John Harkleroad				
FACL/SECM	Paul Kimpling (T)	8. Finance/Administration Section:			
Ground Support Unit	John Badaracco/John Saunders	Chief	Lisa Dow/AnnMarie Carlson		
Communications Unit	Gary Geiser/Paul Noa	Time Unit			
Incident Comm Manager		Procurement Unit			
Medical Unit	Josh Fudge/Jim Emerson/Leif Juliussen Linda Buell (T)	Comp/Claims Unit	Darin Colby		
		Cost Unit	Tony Johns		
Ordering Manager	Patricia Dutrey	Equipment Time	Araceli Nahas/ Stephanie Bartholomew		
RCDM	Josh Wilcox	Personnel Time	Dalton Rutherford		
Prepared By: Name: Paul Zerr		Position/Title: PSC2 (T)		Signature: 	
ICS 203		Date/Time: 10/6/2021 1900 hours			



River Complex Weather Forecast



FORECAST NO:	65	NAME OF FIRE:	River Complex
PREDICTION FOR:	Day Shift	UNIT:	Klamath National Forest
SHIFT DATE:	October 7, 2021	Incident Meteorologist:	Julie Malingowski IMET
FORECAST ISSUED:	1900 October 6, 2021		

...Cool Autumn Pattern Continuing...

WEATHER DISCUSSION: Sky cover will decrease from overcast in the morning to partly cloudy in the afternoon. Areas of fog are possible throughout the day, limiting visibility in some areas.

THURSDAY:

WEATHER: Overcast in the morning, decreasing clouds in the afternoon. Areas of fog in the mountains throughout much of the day.

MAX TEMPERATURES: Above 5500 ft: 53 to 58 F
Below 5500 ft: 64 to 69 F

MIN HUMIDITY: 28 to 35%

CLOUD COVER @ 1500 50%

CHANCE WETTING RAIN 0%

20 FOOT WINDS: **Ridge Lines:** North in the morning 3 to 5 mph, becoming South 5 to 10 mph around 1030.
Valleys: Upslope/Upvalley 2 to 4 mph. South 4 to 8 mph along Hwy 3.

THURSDAY NIGHT:

WEATHER: Mostly clear

MIN TEMPERATURES: 42 to 47 F on the midslopes, 30 to 35 F above 5500' and below 3500'.

MAX HUMIDITY: 60 to 80%, highest in the valleys.


CHANCE WETTING RAIN 0%

20 FOOT WINDS: **Ridge Lines:** West 4 to 8 mph
Valleys: Downslope/downvalley 2 to 4 mph

FRIDAY through MONDAY:

Slightly below normal temperatures and moderate relative humidity is expected through the weekend. High temps in the mid 50s to upper 60s with min RHs of 25 to 40% are expected each day, with good overnight recoveries.

FIRE BEHAVIOR FORECAST

FORECAST NUMBER: 63	TYPE OF FIRE: Wildfire
FIRE NAME: River Complex	OPERATIONAL PERIOD: October 07, 2021 - 24hr
DATE ISSUED: 10/06/21	TIME ISSUED: 2000
UNIT: CA-KNF, CA-SHF	SIGNED:  Typed/printed: Nic Elmquist (FBAN)

INPUTS

WEATHER SUMMARY: ** See Weather Forecast**

- **Today:** Temps 64^o - 69^o, Min. RH 28-35%, Cloud Cover @ 1500: 50%, Chance of wetting rain: 0%
- **Tonight:** Temps 30^o - 35^o, RH 60-80%, Chance of wetting rain: 0%

FUELS SUMMARY:

Dense mixed conifer, old-growth timber, heavy dead/down, mixed ground fuels
Fuel models best represented by 10, SH2, TL8, TU5, SH7, and GS2

OUTPUTS

FIRE BEHAVIOR

GENERAL:

- Three separate rain events since Sept. 9th have brought significant relief to the dry fuel conditions
- There is an increase of the live component of the fuel bed from the recent precipitation
- Most of the heat left around the fire will be the smoldering of dead surface fuels
- Areas of unburned vegetation near heat sources exist near Sugar Pine Butte, Minnehaha Crk, and Stoddard Lake

Fire Danger Indices – IRPG Page 67

Energy Release Component (ERC): Yesterday - 75, Today – 72

Burning Index (BI): Yesterday - 63, Today - 64

Maximum Probability of ignition (PIG) 40%

SPECIFIC:

A very slow warming and drying trend will occur through the weekend. The cooler temperatures, shortening days, and excellent overnight humidity recovery will limit overall fire behavior. The heat remaining around the complex will be isolated to smoldering of dead surface fuel and burning out stump holes. We will continue to have the overnight fixed wing and daytime helicopter infrared flights fly over the complex to identify any hot areas. You can find this information online, under the River Complex at the NIFC FTP Server page (www.ftp.wildfire.gov) under "IR" and/or ask your DIVS.

Branch VIX: The main threat to the control lines will continue to be roll-out or a tree holding heat falling across the line. Continue to keep an eye on the upper portions of Minnehaha Creek in Div. O. Send patrols to check on known sections of mid-slope lines which were recently holding heat.

AIR OPERATIONS:

Sunrise 0714, Last Light 1911 (2 min. shorter day length)

There will be clouds and patchy fog in the morning with some potential clearing in the afternoon. Clouds will surround the upper elevation most of the day impacting air operations trying to access the higher portions of the fire.

SAFETY

The focus on the fire has shifted from suppression to repair and rehabilitation. Be methodical in your actions. Take your time while traveling and completing your work assignments.

ASSIGNMENT LIST (ICS 204 WF)

CONTROLLED UNCLASSIFIED INFORMATION//BASIC

1. Incident Name: <p style="text-align: center;">RIVER COMPLEX</p>	2. Operational Period: Date From: 10/07/21 Date To: 10/08/21 Time From: 0700 Time To: 0700	3. Branch <p style="text-align: center;">CONTINGENCY/REPAIR</p>	Division <p style="text-align: center;">CRONAN</p>
4. Operations Personnel: Operations Section Chief: Scott Grasmick Branch Director: Joe Tieso Division/Group Supervisor: David Barnett		Night Ops: _____ Branch Safety: _____ Air Attack: Jeff Keiser	

Page 1 of 1

5. Resources Assigned:		** Asterisks Denote 24 Hour Resources **						
Resource Identifier		LWD	Leader	Personnel	Hours	Reporting Location		

6. Work Assignments:
Scout and assess the current status of suppression repair and develop a plan for completing needed mitigations to meet the intent of the Suppression Repair Plan.

7. Special Instructions:

8. Communications							
Name	Ch	Function	Rx Freq	Rx Tone	Tx Freq	Tx Tone	Notes
NIFC C1	3	COMMAND	170.9750N	T-9 100.0	168.7000N	T-9 100.0	EDDY GULCH LOOKOUT
NIFC C85	6	COMMAND	173.1375N	T-9 100.0	162.5875N	T-9 100.0	BLUE RIDGE LOOKOUT
NIFC T7	12	TACTICAL	168.2500N	T-9 100.0	168.2500N	T-9 100.0	
A/G CMD	13	AIR TO GROUND	169.1500N		169.1500N		DIVS AND ABOVE
A/G TAC	14	AIR TO GROUND	162.8125N		162.8125N		AIR TO GROUND TACTICAL
CALCORD	15	MEDICAL	156.0750N	T-6 156.7	156.0750N	T-6 156.7	MEDEVAC COORDINATION
AIRGUARD	16	AIRGUARD	168.6250N		168.6250N	T-1 110.9	TONE ON TRANSMIT ONLY - URGENT AIRCRAFT CONTACT

9. Prepared by: Name:	Travis Ederer	RESL
ICS 204	Date/Time: 10/6/2021	2200
	Personnel Count:	0

ASSIGNMENT LIST (ICS 204 WF)

CONTROLLED UNCLASSIFIED INFORMATION//BASIC

1. Incident Name: RIVER COMPLEX	2. Operational Period: Date From: 10/07/21 Date To: 10/08/21 Time From: 0700 Time To: 0700	3. Branch Division M/N/O
--	---	--

4. Operations Personnel:		Page 1 of 1
Operations Section Chief: Scott Grasmick	Night Ops:	
Branch Director:	Branch Safety:	
Division/Group Supervisor: Richard Dykhouse	Air Attack: Jeff Keiser	

5. Resources Assigned:		** Asterisks Denote 24 Hour Resources **					Hours	Reporting Location
Resource Identifier	Request #	LWD	Leader	Personnel				
HC2I PVT-FIRESTORM C5	C-270	10/10	MAC NORLIE	19		0700-1900	ETNA ICP	
HC2I PVT-GRAYBACK 8B	C-277	10/17	CHRIS UNIACK	20		0700-1900	ETNA ICP	
HC2I PVT-TORRES CONTRACTING	C-278	10/10	JOSE VERA	20		0700-1900	ETNA ICP	
HC2IA KLAMATH CREW 14	C-282	10/7	ANDY ZINK	18		0700-1900	ETNA ICP	
ENG3 KNF ENGINE 327	E-769	10/10	JEREMY HALLINAN	5		0700-1900	ETNA ICP	
ENG3 KNF E316	E-770	10/10	JASON GUTZWA	5		0700-1900	ETNA ICP	
ENG3 KNF E355	E-771	10/12	JOBE PRATT	5		0700-1900	ETNA ICP	
ENG3 NV-NNS B5231	E-772	10/12	ALAN PARKIN	4		0700-1900	ETNA ICP	
WTT1 5J WATER	E-308	10/8	CORY CLARK	2		0700-1900	ETNA ICP	
WTS2 PVT-GRANITE COMMERICAL	E-235	10/17	GRANT BEMIS	1		0700-1900	ETNA ICP	
TFLD JOHN MORGAN	O-1620	10/10	JOHN MORGAN	1		0700-1900	ETNA ICP	
SOF2 JENSEN	O-1436	10/7	KELLY JENSEN	1		0700-1900	ETNA ICP	
AZ-FRY MEDICAL TEAM 2	O-1351	10/7	ADAM SHORT	2		0700-1900	ETNA ICP	

6. Work Assignments:
 In order to meet incident objectives, continue to grid and patrol all completed dozer and hand line from Division M through Divisions N and O. Continue to monitor and mop up the south side of Minnehaha as the fire continues to back. Coordinate with the Ramshorn Group for suppression repair activities occurring on the 34 road, the 16Y and the 16YB road systems. DIV N will require monitoring by air as interior islands continue to burn.

7. Special Instructions:
 Utilize the SHF Packers to ingress/egress work assignment locations. Remove and backhaul structure wrap debris. Identify additional mitigation measures required.

8. Communications							
Name	Ch	Function	Rx Freq	Rx Tone	Tx Freq	Tx Tone	Notes
NIFC C31	B.3	COMMAND	173.0250N	T-9 100.0	163.8250N	T-9 100.0	CRAGGY PEAK
NIFC C86	B.4	COMMAND	166.1250N	T-9 100.0	162.1750N	T-9 100.0	PACKERS PEAK
NIFC C97	B.5	COMMAND	168.1375N	T-9 100.0	165.1500N	T-9 100.0	ROZ POINT
NIFC C112	B.6	COMMAND	173.6000N	T-9 100.0	162.0750N	T-9 100.0	BONANZA KING
NIFC T3	B.8	TACTICAL	168.6000N	T-9 100.0	168.6000N	T-9 100.0	DIV N/O
A/G CMD	13	AIR TO GROUND	169.1500N		169.1500N		DIVS AND ABOVE
A/G TAC	14	AIR TO GROUND	162.8125N		162.8125N		AIR TO GROUND TACTICAL
CALCORD	15	MEDICAL	156.0750N	T-6 156.7	156.0750N	T-6 156.7	MEDEVAC COORDINATION
AIRGUARD	16	AIRGUARD	168.6250N		168.6250N	T-1 110.9	TONE ON TRANSMIT ONLY - URGENT AIRCRAFT CONTACT

9. Prepared by: Name: Travis Ederer	RESL	
ICS 204	Date/Time: 10/6/2021 2100	Personnel Count: 103

ASSIGNMENT LIST (ICS 204 WF)

CONTROLLED UNCLASSIFIED
INFORMATION//BASIC

1. Incident Name: RIVER COMPLEX	2. Operational Period: Date From: 10/07/21 Date To: 10/08/21 Time From: 0700 Time To: 0700	3. Branch Division U/K/L
--	---	--

4. Operations Personnel: Page 1 of 1

Operations Section Chief: Scott Grasmick	Night Ops:
Branch Director:	Branch Safety:
Division/Group Supervisor: Unstaffed	Air Attack: Jeff Keiser

5. Resources Assigned: **** Asterisks Denote 24 Hour Resources ****

Resource Identifier	Request #	LWD	Leader	Personnel	Hours	Reporting Location

6. Work Assignments:
Unstaffed

7. Special Instructions:

8. Communications

Name	Ch	Function	Rx Freq	Rx Tone	Tx Freq	Tx Tone	Notes
NIFC C1	B.1	COMMAND	170.9750N	T-9 100.0	168.7000N	T-9 100.0	EDDY GULCH LOOKOUT
NIFC C11	B.2	COMMAND	170.6875N	T-9 100.0	166.5750N	T-9 100.0	ABOVE CECILVILLE
NIFC C86	B.4	COMMAND	166.1250N	T-9 100.0	162.1750N	T-9 100.0	PACKERS PEAK
R5 T4	B.10	TACTICAL	166.5500N	T-9 100.0	166.5500N	T-9 100.0	SHARED WITH U/K/L
A/G CMD	13	AIR TO GROUND	169.1500N		169.1500N		DIVS AND ABOVE
A/G TAC	14	AIR TO GROUND	162.8125N		162.8125N		AIR TO GROUND TACTICAL
CALCORD	15	MEDICAL	156.0750N	T-6 156.7	156.0750N	T-6 156.7	MEDEVAC COORDINATION
AIRGUARD	16	AIRGUARD	168.6250N		168.6250N	T-1 110.9	TONE ON TRANSMIT ONLY - URGENT AIRCRAFT CONTACT

9. Prepared by: Name: Travis Ederer RESL

ICS 204 Date/Time: 10/6/2021 2200 Personnel Count: 0

ASSIGNMENT LIST (ICS 204 WF)

CONTROLLED UNCLASSIFIED INFORMATION//BASIC

1. Incident Name: RIVER COMPLEX	2. Operational Period: Date From: 10/07/21 Date To: 10/08/21 Time From: 0700 Time To: 0700	3. Branch CONTINGENCY/REPAIR	Division STODDARD GROUP
4. Operations Personnel:		Page 1 of 1	

Operations Section Chief: Scott Grasmick	Night Ops:
Branch Director: Joe Tieso	Branch Safety:
Division/Group Supervisor: Unstaffed	Air Attack: Jeff Keiser

5. Resources Assigned: ** Asterisks Denote 24 Hour Resources **							
Resource Identifier	Request #	LWD	Leader	Personnel	Hours	Reporting Location	

6. Work Assignments:
 Assess the impact of the product release onto/into Stoddard Lake. Ensure safe approach and minimize exposure. Isolate and deny entry to the scene. Assist in notifying the appropriate agencies/resources. Establish a short and medium range plan. After personnel leave the incident area, monitor with air resources until Environmental Health personnel arrive at scene.

7. Special Instructions:
 Working with READ and ICP personnel, create and deliver proper incident documentation.

8. Communications							
Name	Ch	Function	Rx Freq	Rx Tone	Tx Freq	Tx Tone	Notes
NIFC C31	B.3	COMMAND	173.0250N	T-9 100.0	163.8250N	T-9 100.0	CRAGGY PEAK
NIFC C86	B.4	COMMAND	166.1250N	T-9 100.0	162.1750N	T-9 100.0	PACKERS PEAK
NIFC C97	B.5	COMMAND	168.1375N	T-9 100.0	165.1500N	T-9 100.0	ROZ POINT
NIFC C112	B.6	COMMAND	173.6000N	T-9 100.0	162.0750N	T-9 100.0	BONANZA KING
NIFC T1	B.7	TACTICAL	168.0500N	T-9 100.0	168.0500N	T-9 100.0	COFFEE, PACKERS GRP
A/G CMD	13	AIR TO GROUND	169.1500N		169.1500N		DIVS AND ABOVE
A/G TAC	14	AIR TO GROUND	162.8125N		162.8125N		AIR TO GROUND TACTICAL
CALCORD	15	MEDICAL	156.0750N	T-6 156.7	156.0750N	T-6 156.7	MEDEVAC COORDINATION
AIRGUARD	16	AIRGUARD	168.6250N		168.6250N	T-1 110.9	TONE ON TRANSMIT ONLY - URGENT AIRCRAFT CONTACT

9. Prepared by: Name: Travis Ederer	RESL	
ICS 204	Date/Time: 10/6/2021 2100	Personnel Count: 0

ASSIGNMENT LIST (ICS 204 WF)

CONTROLLED UNCLASSIFIED INFORMATION//BASIC

1. Incident Name: <p style="text-align: center;">RIVER COMPLEX</p>	2. Operational Period: Date From: 10/07/21 Date To: 10/08/21 Time From: 0700 Time To: 0700	3. Branch <p style="text-align: center;">CONTINGENCY/REPAIR</p>	Division <p style="text-align: center;">COFFEE GROUP</p>
4. Operations Personnel:		Page 1 of 2	

Operations Section Chief: Scott Grasmick	Night Ops:
Branch Director: Joe Tieso	Branch Safety:
Division/Group Supervisor: Stan Hill	Air Attack: Jeff Keiser

5. Resources Assigned:		** Asterisks Denote 24 Hour Resources **					
Resource Identifier	Request #	LWD	Leader	Personnel	Hours	Reporting Location	
COFFEE TASK FORCE							
HC1 PRINEVILLE IHC	C-276	10/7	BRENDAN OREILLY	21	0700-1900	ETNA ICP	
HC1 CHENA IHC	C-281	10/7	IRIS SAGER	24	0700-1900	ETNA ICP	
HC2IA PVT-FIRESTORM NCC19	C-51	10/16	GRAHAM LOWE	20	0700-1900	ETNA ICP	
HC2 PVT-WESTCOAST REFORESTATION	C-266	10/7	ANTONIO MENDEZ	20	0700-1900	ETNA ICP	
HC2 PVT-LAVA RIVER CREW 1	C-267	10/7	RAUL GUZMAN	20	0700-1900	ETNA ICP	
HC2 PVT-M R CONTRACTING C1	C-269	10/7	THOMAS GUZMAN	20	0700-1900	ETNA ICP	
DOZ2 PVT-BEN'S TRUCK & EQUIPMENT INC	E-790	10/17	BILL SCARBROUGH	2	0700-1900	ETNA ICP	
EXCA PVT-BRAD INGRAM CONSTRUCTION	E-754	10/15	DRU GANBIN	2	0700-1900	ETNA ICP	
EXCA PVT-MOBLEY CONSTRUCTION	E-776	10/16	DONNY MOBLEY	2	0700-1900	ETNA ICP	
EXCA PVT-DOWNEY TRUCKING	E-777	10/15	TREVOR DOWNEY	2	0700-1900	ETNA ICP	
GRD PVT-M PETERS	E-506	10/16	ALEXANDER GREY	2	0700-1900	ETNA ICP	
GRD2 PVT-JOHNSON	E-543	10/17	JACK HOTTENDORF	2	0700-1900	ETNA ICP	
CHIP-PVT-NORTH ZONE FALLERS	E-497	10/8	GAGE INGRAM	3	0700-1900	ETNA ICP	
WTS2 PVT-ALPINE	E-262	10/15	CONRAD BURBANK	1	0700-1900	ETNA ICP	
WTS2 PVT-HURLIMANN	E-273	10/17	FRANK HURLIMANN	1	0700-1900	ETNA ICP	
WTS2 DOWLING 001	E-765	10/19	PAT GREY	1	0700-1900	ETNA ICP	
WTS2 DOWLING 002	E-766	10/10	TY BUNDY	1	0700-1900	ETNA ICP	
FMOD PVT-MOEN TIMBER	O-116	10/18	DARWIN SAXON	2	0700-1900	ETNA ICP	
TFLD JANES	O-1374	10/7	BRIAN JANES	1	0700-1900	ETNA ICP	

6. Work Assignments:
Implement contingency actions commensurate with anticipated fire growth. Implement suppression repair according to the repair plan guidelines. Coordinate activities with the assigned Task Force Leader and Heavy Equipment Bosses. Coordinate all activities with Resource Advisors.

7. Special Instructions:
All work must be approved by Resource Advisors.
FOBS and READS will check in and out with DIVS. All natural and cultural resource concerns are flagged with orange/white candy-stripe flagging.

8. Communications

Name	Ch	Function	Rx Freq	Rx Tone	Tx Freq	Tx Tone	Notes
NIFC C31	B.3	COMMAND	173.0250N	T-9 100.0	163.8250N	T-9 100.0	CRAGGY PEAK
NIFC C112	B.6	COMMAND	173.6000N	T-9 100.0	162.0750N	T-9 100.0	BONANZA KING
NIFC T1	B.7	TACTICAL	168.0500N	T-9 100.0	168.0500N	T-9 100.0	COFFEE, PACKERS GRP
A/G CMD	13	AIR TO GROUND	169.1500N		169.1500N		DIVS AND ABOVE
A/G TAC	14	AIR TO GROUND	162.8125N		162.8125N		AIR TO GROUND TACTICAL
CALCORD	15	MEDICAL	156.0750N	T-6 156.7	156.0750N	T-6 156.7	MEDEVAC COORDINATION
AIRGUARD	16	AIRGUARD	168.6250N		168.6250N	T-1 110.9	ONE ON TRANSMIT ONLY - URGENT AIRCRAFT CONTACT

9. Prepared by: Name: Travis Ederer RESL

Date/Time: 10/6/2021 2200 Personnel Count: 147

ASSIGNMENT LIST (ICS 204 WF)

CONTROLLED UNCLASSIFIED INFORMATION//BASIC

1. Incident Name: <p style="text-align: center; font-weight: bold;">RIVER COMPLEX</p>	2. Operational Period: Date From: 10/07/21 Date To: 10/08/21 Time From: 0700 Time To: 0700	3. Branch <p style="text-align: center; font-weight: bold;">CONTINGENCY/REPAIR</p>	Division <p style="text-align: center; font-weight: bold;">COFFEE GROUP</p>
---	---	--	---

Page 2 of 2

4. Operations Personnel:			
Operations Section Chief: Scott Grasmick	Night Ops:		
Branch Director: Joe Tieso	Branch Safety:		
Division/Group Supervisor: Stan Hill	Air Attack: Jeff Keiser		

5. Resources Assigned:		** Asterisks Denote 24 Hour Resources **					Hours	Reporting Location
Resource Identifier	Request #	LWD	Leader	Personnel				
COFFEE TASK FORCE (CONT.)								
HEQB MORAGA-RENTSCH	O-1510	10/8	UIS MORAGA-RENTSCH	1		0700-1900	ETNA ICP	
HEQB SENSECQUA	O-1511	10/8	KELLY SENSECQUA	1		0700-1900	ETNA ICP	
HEQB JUBACK	O-1651	10/17	PATRICK JUBACK	1		0700-1900	ETNA ICP	
HEQB (T) TINDLE	O-1689	10/17	ERIC TINDLE	1		0700-1900	ETNA ICP	
FOBS(T) MEGINLEY	O-1458	10/7	WILLIAM MEGINLEY	1		0700-1900	ETNA ICP	
SOF2 LEE	O-1598	10/13	JONATHAN LEE	1		0700-1900	ETNA ICP	
EMPF BORUM	O-1678	10/16	CONNOR BORUM	1		0700-1900	ETNA ICP	
RES ROUGH COUNTRY MED. TEAM 3	E-727	10/9	BOB MENDEZ	2		0700-1900	ETNA ICP	
TRINITY TASK FORCE								
DOZ2 PVT-CRAIG MOUNTAIN	E-315	10/17	KYLE ALBRIGHT	2		0700-1900	ETNA ICP	
DOZ2 PVT-BLACK OPERATIONS	E-333	10/20	WILL BLACK	2		0700-1900	ETNA ICP	
DOZ2 PVT-ROBERT JOHNSON	E-789	10/17	WENDY JOHNSON	2		0700-1900	ETNA ICP	
EXCA PVT-WD HEAVY EQUIPMENT	E-751	10/10	ADAM DANIELS	2		0700-1900	ETNA ICP	
EXCA PVT-NORTH RIVERS CONSTRUCTION	E-782	10/15	CODY CARLSON	2		0700-1900	ETNA ICP	
EXCA PVT-ZEBBS TREE SERVICE	E-785	10/17	CAMERON HOLMES	2		0700-1900	ETNA ICP	
HEQB ROGERS	O-1652	10/16	DAVE ROGERS	1		0700-1900	ETNA ICP	

6. Work Assignments:
Implement contingency actions commensurate with anticipated fire growth. Implement suppression repair according to the repair plan guidelines. Coordinate activities with the assigned Task Force Leader and Heavy Equipment Bosses. Coordinate all activities with Resource Advisors.

7. Special Instructions:
All work must be approved by Resource Advisors.
FOBS and READS will check in and out with DIVS. All natural and cultural resource concerns are flagged with orange/white candy-stripe flagging.

8. Communications							
Name	Ch	Function	Rx Freq	Rx Tone	Tx Freq	Tx Tone	Notes
NIFC C31	B.3	COMMAND	173.0250N	T-9 100.0	163.8250N	T-9 100.0	CRAGGY PEAK
NIFC C112	B.6	COMMAND	173.6000N	T-9 100.0	162.0750N	T-9 100.0	BONANZA KING
NIFC T1	B.7	TACTICAL	168.0500N	T-9 100.0	168.0500N	T-9 100.0	COFFEE, PACKERS GRP
A/G CMD	13	AIR TO GROUND	169.1500N		169.1500N		DIVS AND ABOVE
A/G TAC	14	AIR TO GROUND	162.8125N		162.8125N		AIR TO GROUND TACTICAL
CALCORD	15	MEDICAL	156.0750N	T-6 156.7	156.0750N	T-6 156.7	MEDEVAC COORDINATION
AIRGUARD	16	AIRGUARD	168.6250N		168.6250N	T-1 110.9	TONE ON TRANSMIT ONLY - URGENT AIRCRAFT CONTACT

9. Prepared by: Name: Travis Ederer RESL

ICS 204 Date/Time: 10/6/2021 2200 Personnel Count: 22

ASSIGNMENT LIST (ICS 204 WF)

CONTROLLED UNCLASSIFIED INFORMATION//BASIC

1. Incident Name: <p style="text-align: center; font-size: 1.2em;">RIVER COMPLEX</p>	2. Operational Period: Date From: 10/07/21 Date To: 10/08/21 Time From: 0700 Time To: 0700	3. Branch Division CONTINGENCY/REPAIR RAMSHORN GROUP Page 1 of 1
--	---	--

4. Operations Personnel:			
Operations Section Chief: Scott Grasmick		Night Ops:	
Branch Director: Joe Tieso		Branch Safety:	
Division/Group Supervisor: Jere Classay		Air Attack:	Jeff Keiser

Resource Identifier	Request #	LWD	Leader	Personnel	Hours	Reporting Location
** Asterisks Denote 24 Hour Resources **						
DOZ2-PVT-MOBLEY	E-182	10/15	ANDREW BOYD	2	0700-1900	ETNA ICP
DOZ2 PVT-EMERY FARM	E-401	10/13	LOGAN GARNER	2	0700-1900	ETNA ICP
DOZ2 PVT-OWENS FREIGHT	E-620	10/16	MATT BARNEM	2	0700-1900	ETNA ICP
DOZ3 PVT-JUNGWIRTH	E-126	10/10	LARRY PERRY	2	0700-1900	ETNA ICP
EXCA PVT-NORTHSTATE EQUIPMENT	E-753	10/18	DONOVAN HILLAN	2	0700-1900	ETNA ICP
EXCA PVT-PETERS	E-756	10/7	ETHAN PETER	2	0700-1900	ETNA ICP
EXCA PVT-DAVIS CORP	E-757	10/14	RANDY BLANSETT	2	0700-1900	ETNA ICP
EXCA PVT-SLO MO	E-778	10/16	RON FRANK	2	0700-1900	ETNA ICP
EXCA PVT-RICHARD MCLERAN TRUCKING	E-783	10/15	RICHARD MCLERAN	2	0700-1900	ETNA ICP
WTT1 CA-SVF-1537	E-220	10/9	PATRICK COSTELLO	1	0700-1900	ETNA ICP
HEQB MYHRE	O-1587	10/12	DOUGLAS MYHRE	1	0700-1900	ETNA ICP
HEQB CASE	O-1599	10/11	KEVIN CASE	1	0700-1900	ETNA ICP
EMPF REIBOLD	O-1691	10/20	ROBIN REIBOLD	1	0700-1900	ETNA ICP

6. Work Assignments:
Implement contingency actions commensurate with anticipated fire growth. Implement suppression repair according to the repair plan guidelines. Coordinate activities with the assigned Task Force Leader and Heavy Equipment Bosses. Coordinate all activities with Resource Advisors.

7. Special Instructions:
All work must be approved by Resource Advisors.
FOBS and READS will check in and out with DIVS. All natural and cultural resource concerns are flagged with orange/white candy-stripe flagging.

8. Communications

Name	Ch	Function	Rx Freq	Rx Tone	Tx Freq	Tx Tone	Notes
NIFC C31	B.3	COMMAND	173.0250N	T-9 100.0	163.8250N	T-9 100.0	CRAGGY PEAK
NIFC C112	B.6	COMMAND	173.6000N	T-9 100.0	162.0750N	T-9 100.0	BONANZA KING
NIFC T6	11	TACTICAL	166.7750N	T-9 100.0	166.7750N	T-9 100.0	RAMSHORN
A/G CMD	13	AIR TO GROUND	169.1500N		169.1500N		DIVS AND ABOVE
A/G TAC	14	AIR TO GROUND	162.8125N		162.8125N		AIR TO GROUND TACTICAL
CALCORD	15	MEDICAL	156.0750N	T-6 156.7	156.0750N	T-6 156.7	MEDEVAC COORDINATION
AIRGUARD	16	AIRGUARD	168.6250N		168.6250N	T-1 110.9	PHONE ON TRANSMIT ONLY - URGENT AIRCRAFT CONTACT

9. Prepared by: Name: Travis Ederer RESL
ICs 204 Date/Time: 10/6/2021 2200 Personnel Count: 22

ASSIGNMENT LIST (ICS 204 WF)

CONTROLLED UNCLASSIFIED INFORMATION//BASIC

1. Incident Name: RIVER COMPLEX	2. Operational Period: Date From: 10/07/21 Date To: 10/08/21 Time From: 0700 Time To: 0700	3. Branch: CONTINGENCY/REPAIR Division: BEAR COUNTRY GROUP
---	---	---

Page 1 of 1

4. Operations Personnel:			
Operations Section Chief: Scott Grasmick		Night Ops:	
Branch Director: Joe Tieso		Branch Safety:	
Division/Group Supervisor: Brandon Paige/Craig Newell (T)		Air Attack: Jeff Keiser	

5. Resources Assigned:							
** Asterisks Denote 24 Hour Resources **							
Resource Identifier	Request #	LWD	Leader	Personnel	Hours	Reporting Location	
HC2 PVT-FIRST STRIKE	C-265	10/8	JEREMY SLIFER	19	0700-1900	ETNA ICP	
DOZ3 PVT-MILE HIGH	E-92	10/9	TORIN THOMPSON	2	0700-1900	ETNA ICP	
EXCA PVT-BOB JOHNSON CONSTRUCT	E-752	10/19	MIKE LAMARR	2	0700-1900	ETNA ICP	
EXCA PVT-HIGH POWER	E-780	10/18	JESSE ZERKLE	2	0700-1900	ETNA ICP	
EXCA PVT-WALBERG INC	E-784	10/17	GARY LAWLESS	2	0700-1900	ETNA ICP	
HEQB MOTA	O-1621	10/14	RAMON MOTA	1	0700-1900	ETNA ICP	
HEQB ISBELL	O-1674	10/9	TY ISBELL	1	0700-1900	ETNA ICP	
SOFR (T) KLEWOWICZ	O-1539	10/9	ERIC KLEWOWICZ	1	0700-1900	ETNA ICP	
REAF JAMIESON	O-798	10/23	TRISTAN JAMIESON	1	0700-1900	ETNA ICP	
EMPF CLOCK	O-1681	10/20	TYRELL CLOCK	1	0700-1900	ETNA ICP	

6. Work Assignments:
Continue contingency line repair south of Eddy Lookout between Eddy LO and Lower Mathews. Continue grading efforts on 38N16/38N01/38N02.

7. Special Instructions:
All work must be approved by Resource Advisors.
FOBS and READS will check in and out with DIVS. All natural and cultural resource concerns are flagged with orange/white candy-stripe flagging.

8. Communications							
Name	Ch	Function	Rx Freq	Rx Tone	Tx Freq	Tx Tone	Notes
NIFC C1	B.1	COMMAND	170.9750N	T-9 100.0	168.7000N	T-9 100.0	EDDY GULCH LOOKOUT
NIFC C11	B.2	COMMAND	170.6875N	T-9 100.0	166.5750N	T-9 100.0	ABOVE CECILVILLE
NIFC C86	B.4	COMMAND	166.1250N	T-9 100.0	162.1750N	T-9 100.0	PACKERS PEAK
R5 T4	B.10	TACTICAL	166.5500N	T-9 100.0	166.5500N	T-9 100.0	SHARED WITH U/K/L
A/G CMD	13	AIR TO GROUND	169.1500N		169.1500N		DIVS AND ABOVE
A/G TAC	14	AIR TO GROUND	162.8125N		162.8125N		AIR TO GROUND TACTICAL
CALCORD	15	MEDICAL	156.0750N	T-6 156.7	156.0750N	T-6 156.7	MEDEVAC COORDINATION
AIRGUARD	16	AIRGUARD	168.6250N		168.6250N	T-1 110.9	TONE ON TRANSMIT ONLY - URGENT AIRCRAFT CONTACT

9. Prepared by: Name: Travis Ederer	RESL	
ICS 204	Date/Time: 10/6/2021 2200	Personnel Count: 32

AIR OPERATIONS SUMMARY ICS-220

Incident Name / Number River Complex CA-KNF-006385	Sunrise 7:15:00	Avail 8:00:00	Pumpkin 19:14:00	Sunset 18:44:00
General Remarks, Safety Notes, Hazards, Air Operations Special Equipment, etc.				
Track all dipsite locations / # of dips / gallons taken / drop locations / # of drops / gallons dropped. Stay in same watershed. Clear drop zones All GPS is to be collected in DD° MM.MM' Transponder 1255				
Email daily costs to: 2021.river.finance@firenet.gov , nopsaviation@gmail.com				

Time Prepared 19:00:00	Date Prepared 10/6/21	Prepared By John Crotty /js/
Shutdown 19:14:00	Operational Period - Date 10/07/21	Operational Period - Time 07:00-20:00
Helibase Information Name: Scott Valley Latitude: 41° 33.47' N Longitude: 122° 51.30' W Name: HOGE 2728 Trinity Center Latitude: 40° 58.97' N Longitude: 122° 41.62' W HIGE 2390'		
Request # Polygon: A-320 Altitude: 10500' MSL Centerpoint: 41° 23.33' Lat 123° 03.43' Long NOTAMS: 1/5601 Frequency: 123.6250 http://tfr.faa.gov/tfr2/list.html		
Rescue Ship Information Short Haul: _____ Name: _____ Phone: _____ Make/Model: _____ Location: _____ Day Hoist: CHP H-12 Yreka COICC A Star Redding Request Procedure for These Aircraft: See Medical Plan For Additional Info		

Incident Frequencies	RX	Tone	TX	Tone	AM/FM	Position	Name	Phone	EQUIPMENT/SUPPLIES
AJA (TFR)	123.6250		123.6250		AM	AOBD	John Crotty	805-440-6186	
SCOTT VALLEY A30	122.8000		122.8000		AM	ASGS	Isi Solis	760-417-9298	
TRINITY CENTER O86	122.9000		122.9000		AM	ASGS-T	Shane Hagen	559-974-4500	
A/A ROTOR						HEBM	Kris Maldonado	(630) 545-9460	Crash Rescue (SV) Water Tender
AIR TACTICS						HEBM-T			E-191 E-194
CMD RIVER	172.2500		165.0750		FM	HEBM			
CMD SALMON	172.4000		164.1250		FM	HEBM-T			
A/G CMD	169.1500		169.1500		FM	ATGS	Jeff Keiser	530-643-2259	
A/G TAC	162.8125		162.8125		FM	ATGS-T			
DECK	168.3500		168.3500		FM	HLCO			
CALCORD	156.0750	156.7 (T6)	156.0750	156.7 (T6)	FM	FAA Tower			
AIR GUARD	168.6250		168.6250	110.9 (T1)	FM				
NIFC CMD 1	170.9750	100.0 (T9)	168.7000	100.0 (T9)	FM	IR	Jim Kniss (7AC)	805-218-9646	

HELICOPTERS (SCOTT VALLEY HELIBASE)													
FAA #	TYPE	Make/Model	Helibase	Avail	Start	Remarks	FAA #	TYPE	Make/Model	Helibase	Avail	Start	Remarks
N5TH	1	KMAX	Scott HB	0900	1000	A-323 EU/Bucket/LL							
N502HQ	2	Bell 205 A1	Scott HB	0730	0800	A-162 EU/Bucket							
N617AC	3	Bell 407	Scott HB	0730	0800	A-191 CWN/IR/Bucket/Recon							
N14HX	3	Bell 407	Scott HB	0730	0800	A-330 EU/Longline/Bucket							

FIXED WING													
FAA #	Type	Make/Model	Base	Avail	Start	Remarks	FAA #	Type	Make/Model	Base	Avail	Start	Remarks
							N32WS	AA-15	AC90	SIY	0730	0800	A-167

RIVER COMPLEX - SAFETY MESSAGE

We are ALL accountable and responsible for SAFE behaviors

INCIDENT: River Complex CA-KNF

Date: October 07, 2021

Narrative: The “**Transition**” word is happening today and tomorrow. California IMT 15 will be handing off command to the Great Basin Type 3 Team Friday. If you are staying with the Type 3 Team, be sure you know where you are going for briefing on Friday. During every transition you will most likely have a new supervisor. Make sure you know who they are and get your instructions for the day. In a transition there are many moving parts. ICP will remain here at Etna. Listen up during today’s briefing.

Thanks, from the California IMT 15 Safety Section...Great safety record!

Fire Order of the Day – Give clear instructions and be sure they are understood

- ❖ **Personal Responsibility:** Your safety is your responsibility, take it seriously. Look out for the welfare of yourself and others. You are the line safety officers!
- ❖ **Complacency:** The strongest weapon against complacency is good leadership. Clearly communicate leader’s intent, stay engaged and empower your subordinates. Critical hours for injuries and accidents is between 14:00 and 18:00 hours; be especially alert during this period of time, don’t let your guard down.
- ❖ **Fatigue:** Monitor Personnel for Fatigue - Consider decreasing intervals for breaks and increasing time – This is a marathon; NOT a sprint! Hydrate appropriately and monitor personnel for excessive fatigue.
- ❖ **Driving:** Keep your speeds down on all roads; watch out for loose, dusty roads, unstable shoulders, Wildlife and always wear your seatbelts. Be alert to high speeds, park off the roadway and use warning devices.
- ❖ **Communications:** Understand and follow the ICS 205 Incident Communications plan and the ICS 206 *Medical Emergency Procedures*.
- ❖ **Briefings:** Tailgate safety briefings are REQUIRED to be given each shift and documented on your ICS 214, Unit Log.



Incident Safety Officers: Tom Zeulner, Brent Kaiser, Rick Bertram

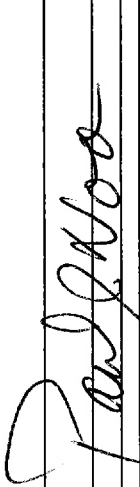
BK

INCIDENT SAFETY ANALYSIS 215a

River Complex / CA KNF 006385 - Thursday, October 07, 2021

8. Location	9. Hazard	6. Control or Abatement Action (Engineering, Administrative, PPE, Avoidance, Education, etc)
All	Extended Medical Extraction Times	<ul style="list-style-type: none"> - Identify helispots and Lat/Longs, ensure they're known. - Know 8 Line and remain organized and calm. - Stay current on weather conditions that could effect Helicopter operations. - Preplan extractions on your division and update as you go. - Call for adjoining resources for assistance.
All	Hazard Trees	<ul style="list-style-type: none"> - Follow "Hazard Tree Safety" guidelines, IRPG page 22,23. - Post lookouts, or use a spotter in mop-up areas with personnel. - Don't park vehicles or take breaks in high concentrations of hazard trees. - Establish trigger points for disengagement during high wind events. - Remember that the hazard zone extends a minimum of 2 1/2 tree heights. - Aviation drops may bring down trees, burned or unburned
All	Steep Terrain & Rolling Debris	<ul style="list-style-type: none"> Maintain 8'-10' spacing when working & walking. - Don't work directly above or below any personnel. - Be on the lookout for rolling rocks, debris, or burning material. - Shout out loudly any rock or log rolling down the hill. - Evaluate necessity to send personnel in areas with limited access. - Post lookouts (IRPG pg 7).
All	Driving & Traffic	<ul style="list-style-type: none"> - Practice "Defensive Driving" techniques traveling on all roads and city streets. - Use spotters when backing. - Honk horn to alert personnel when backing. - Keep clutter off dash and inside cab. - Follow Driving LCES (Lights, Chock blocks, Emergency brake, Seat belts. - Always use headlights. - Yield to pedestrians and bicycles. - Observe posted speed limits. - Use the 3 second rule for following distance when driving. - Use chock blocks, turn wheels into hill. - Avoid distractions (eating, cell phones, radio). - Ensure that windshields are kept clean of dust and bugs.
All	Fatigue & Over Exertion	<ul style="list-style-type: none"> - Drink 1 quart of water each hour during and after work. - Rotate crews out of smoky areas. - Set a reasonable work pace and allow adequate rest breaks while on the project. - Stagger work crews start time to limit fatigue. - Use buddy system to monitor personnel of heat related and fatigue issues. - Follow work / rest guidelines.
All	Heavy Equipment Operations	<ul style="list-style-type: none"> - Ensure operators know the plan and have an out. - Ensure communications are established with operators. - Use hand signals if other communications are unavailable. - Maintain a 50'-100' exclusion area around equipment and increase it to 1 1/2 times tree height when in timber. - Use a spotter when backing. - Avoid working below heavy equipment.
All	Helicopter Operations	<ul style="list-style-type: none"> - Stay clear of all bucket drops during suppression actions are in and allow a few minutes prior to re-entry. - If working with helicopter designate a contact person for the pilot - Monitor A to G frequency when ships are working in your division - Use signal mirror to show pilot your location during operations - Follow aviation safety guidelines in IRPG and IHOG.
All	Infectious Disease\COVID	<ul style="list-style-type: none"> - Wash hands frequently / maintain good hygiene. - Maintain 6' separation at all times in camp. - Use module of one concept. - Use technology as often as possible for meetings. - Do not share phones\radios. - If you feel sick isolate immediately and notify supervisor.
All	Wet Weather	<ul style="list-style-type: none"> - Reduce speeds on all roads - Dirt surfaces become slick - Watch for rock roll out off of hillsides - Watch for weather weakened snags falling - Stay out of heavy snag areas, storm winds and rain will bring some down - Watch footing while operating machinery, tools and crew spacing - Protect against hypothermia and dehydration is still possible



ICS 205 - INCIDENT RADIO COMMUNICATIONS PLAN				RADIO CLONE GROUP A v5				
1. Incident Name: RIVER COMPLEX CLONE GROUP A				3. Operational Period: Date From: 10/07/21 Date To: 10/08/21 Time From: 0700 Time To: 0700				
2. Date/Time Prepared Date: 10/06/2021 Time: 1930								
4. Communications								
Ch#	Function	Name	Assigned To	Rx Freq	Rx Tone	Tx Freq	Tx Tone	Notes
1	COMMAND	SALMON	IA USE	172.4000N		164.1250N	T-6 156.7	KNF
2	COMMAND	RIVER	IA USE	172.2500N		165.0750N	T-7 167.9	KNF
3	COMMAND	NIFC C1	ALL RESOURCES	170.9750N	T-9 100.0	168.7000N	T-9 100.0	EDDY GULCH LOOKOUT
4	COMMAND	NIFC C11	ALL RESOURCES	170.6875N	T-9 100.0	166.5750N	T-9 100.0	ABOVE CECILVILLE
5	COMMAND	NIFC C31	ALL RESOURCES	173.0250N	T-9 100.0	163.8250N	T-9 100.0	CRAGGY PEAK
6	COMMAND	NIFC C85	CRONAN	173.1375N	T-9 100.0	162.5875N	T-9 100.0	BLUE RIDGE LOOKOUT
7	COMMAND	NIFC C86	ALL RESOURCES	166.1250N	T-9 100.0	162.1750N	T-9 100.0	PACKERS PEAK
8	TACTICAL	NIFC T1	COFFEE	168.0500N	T-9 100.0	168.0500N	T-9 100.0	
9	TACTICAL	NIFC T3	DIVISION M/N/O	168.6000N	T-9 100.0	168.6000N	T-9 100.0	DIV M/N/O
10	TACTICAL	NIFC T5	ROADSIDE GRP	166.7250N	T-9 100.0	166.7250N	T-9 100.0	ROADSIDE HAZARD GROUP
11	TACTICAL	NIFC T6	RAMSHORN	166.7750N	T-9 100.0	166.7750N	T-9 100.0	RAMSHORN
12	TACTICAL	NIFC T7	CRONAN	168.2500N	T-9 100.0	168.2500N	T-9 100.0	
13	AIR TO GROUND	A/G CMD	DIVS AND ABOVE	169.1500N		169.1500N		DIVS AND ABOVE
14	AIR TO GROUND	A/G TAC	ALL RESOURCES	162.8125N		162.8125N		AIR TO GROUND TACTICAL
15	MEDICAL	CALCORD	ALL RESOURCES	156.0750N	T-6 156.7	156.0750N	T-6 156.7	MEDEVAC COORDINATION
16	AIRGUARD	AIRGUARD	ALL RESOURCES	168.6250N		168.6250N	T-1 110.9	TONE ON TRANSMIT ONLY - URGENT AIRCRAFT CONTACT
17								
5. Special Instructions								
Communications Unit Phone Number: 530-467-1509 24-HOUR								
6. Prepared by (Communications Unit Leader): Name: Gary Geiser/Paul Noa								Signature: 
ICS 205 - CONTROLLED UNCLASSIFIED INFORMATION//BASIC								Date/Time: 10/06/2021 1930

ICS 205 - INCIDENT RADIO COMMUNICATIONS PLAN		RADIO CLONE GROUP B v5							
1. Incident Name: RIVER COMPLEX CLONE GROUP B		3. Operational Period: Date From: 10/07/21 Date To: 10/08/21 Time From: 0700 Time To: 0700							
2. Date/Time Prepared Date: 10/06/2021 Time: 1930									
4. Communications									
Ch#	Function	Name	Assigned To	Rx Freq	Rx Tone	Tx Freq	Tx Tone	Notes	
1	COMMAND	NIFC C1	ALL RESOURCES	170.9750N	T-9 100.0	168.7000N	T-9 100.0	EDDY GULCH LOOKOUT	
2	COMMAND	NIFC C11	ALL RESOURCES	170.6875N	T-9 100.0	166.5750N	T-9 100.0	ABOVE CECILVILLE	
3	COMMAND	NIFC C31	ALL RESOURCES	173.0250N	T-9 100.0	163.8250N	T-9 100.0	Craggy Peak	
4	COMMAND	NIFC C86	ALL RESOURCES	166.1250N	T-9 100.0	162.1750N	T-9 100.0	PACKERS PEAK	
5	COMMAND	NIFC C97	ALL RESOURCES	168.1375N	T-9 100.0	165.1500N	T-9 100.0	ROZ POINT	
6	COMMAND	NIFC C112	ALL RESOURCES	173.6000N	T-9 100.0	162.0750N	T-9 100.0	BONANZA KING	
7	TACTICAL	NIFC T1	COFFEE	168.0500N	T-9 100.0	168.0500N	T-9 100.0	COFFEE, PACKERS GRP	
8	TACTICAL	NIFC T3	DIVISION M/N/O	168.6000N	T-9 100.0	168.6000N	T-9 100.0	DIV N/O	
9	TACTICAL	NIFC T5	ROADSIDE GRP	166.7250N	T-9 100.0	166.7250N	T-9 100.0	ROADSIDE HAZARD GROUP	
10	TACTICAL	R5 T4	DIV U/K/L, BEAR	166.5500N	T-9 100.0	166.5500N	T-9 100.0	SHARED WITH U/K/L	
11	TACTICAL	R5 T5	DIVISION Q	167.1125N	T-9 100.0	167.1125N	T-9 100.0		
12	TACTICAL	R5 T6	DIVISION R	168.2375N	T-9 100.0	168.2375N	T-9 100.0		
13	AIR TO GROUND	A/G CMD	DIVS AND ABOVE	169.1500N		169.1500N		DIVS AND ABOVE	
14	AIR TO GROUND	A/G TAC	ALL RESOURCES	162.8125N		162.8125N			
15	MEDICAL	CALCORD	ALL RESOURCES	156.0750N	T-6 156.7	156.0750N	T-6 156.7	MEDEVAC COORDINATION	
16	AIRGUARD	AIRGUARD	ALL RESOURCES	168.6250N		168.6250N	T-1 110.9	TONE ON TRANSMIT ONLY - URGENT AIRCRAFT CONTACT	
17									
5. Special Instructions									
Communications Unit Phone Number: 530-467-1509 24-HOUR									
6. Prepared by (Communications Unit Leader): Name: Gary Geiser/Paul Noa						Signature: _____			
ICS 205 - CONTROLLED UNCLASSIFIED INFORMATION//BASIC						Date/Time: 10/06/2021 1930			

NIMS IAP

ICS 205 - INCIDENT RADIO COMMUNICATIONS PLAN				INITIAL ATTACK CLONE GROUP (C)				
1. Incident Name: RIVER COMPLEX INITAL ATTACK CLONE GROUP (C)		2. Date/Time Prepared Date: 10/06/2021 Time: 1930		3. Operational Period: Date From: 10/07/21 Date To: 10/08/21 Time From: 0700 Time To: 0700				
4. Communications								
Ch#	Function	Name	Assigned To	Rx Freq	Rx Tone	Tx Freq	Tx Tone	Notes
1	COMMAND	SALMON	ALL RESOURCES	172.4000N		164.1250N	T-6 156.7	KNF
2	COMMAND	RIVER	ALL RESOURCES	172.2500N		165.0750N	T-7 167.9	KNF
3	IA SKU	SKU	ALL RESOURCES	151.3250		159.3600	T-1 110.9	SKU LOCAL
4	IA SHU	SHU	ALL RESOURCES	151.1600		159.2700	T-1 110.9	SHU LOCAL
5	IA SHF	SHF	ALL RESOURCES	171.5750		165.0125	T-1 110.9	BONANZA KING
6								
7								
8	IA SKU	CDF TAC 9	ALL RESOURCES	151.3850	T-16 192.8	151.3850	T-16 192.8	CDF TAC 9
9	IA SHU	CDF TAC 11	ALL RESOURCES	151.4450	T-16 192.8	151.4450	T-16 192.8	CDF TAC 11
10	IA SHF	NIFC TAC 2	ALL RESOURCES	168.2000		168.2000		NIFC TAC 2 - SHF IA TAC
11	AIR TO GROUND	CDF A/G 1	ALL RESOURCES	151.2200	T-16 192.8	151.2200	T-16 192.8	
12	AIR TO GROUND	CDF A/G 2	ALL RESOURCES	159.2625	T-16 192.8	159.2625	T-16 192.8	
13	AIR TO GROUND	A/G CMD	DIVS AND ABOVE	169.1500N		169.1500N		DIVS AND ABOVE
14	AIR TO GROUND	A/G TAC	ALL RESOURCES	162.8125N		162.8125N		
15	MEDICAL	CALCORD	ALL RESOURCES	156.0750N	T-6 156.7	156.0750N	T-6 156.7	MEDEVAC COORDINATION
16	AIRGUARD	AIRGUARD	ALL RESOURCES	168.6250N		168.6250N	T-1 110.9	TONE ON TRANSMIT ONLY - URGENT AIRCRAFT CONTACT
17								
5. Special Instructions								
Communications Unit Phone Number: 530-467-1509 24-HOUR								
6. Prepared by (Communications Unit Leader): Name: Gary Geiser/Paul Noa				Signature: _____		Date/Time: 10/06/2021 1930		
ICS 205 - CONTROLLED UNCLASSIFIED INFORMATION/BASIC				NIMS IAP				



Human Resource Message

River Complex

October 7, 2021

There will no longer be an HRSP located at this incident but below are contact information should you have questions or concerns.

This is a drug free, alcohol free and respectful work place.

Treat one another with Mutual Respect and dignity.

Harassment and discrimination will not be tolerated, and it is up to all of us to assure that we have a positive and respectful work environment.

If you have HR Issues or concerns please contact:

Linda Overton, HRSP
707-373-7631
Linda.overton@usda.gov

All Allegations of Harassment, bullying, or hostile work environment must be reported to the USFS Harassment Reporting Center.

CALL THE HARASSMENT REPORTING CENTER AT (844) 815-8943
Open 7 days a week from 7:00 a.m. to 11:00 p.m. (Eastern Time)

If you would like to contact the local Union (Forest Service), please contact:

Alonzo Jackson
Cell: 530-598-4157
Phone: 530-493-1768
alonzo.jackson@usda.gov

River Complex Public Information

Fire Information Line: 707-596-6075

Fire E-mail: 2021.River@firenet.gov



- **We need photos!**

Email to

2021.River@firenet.gov

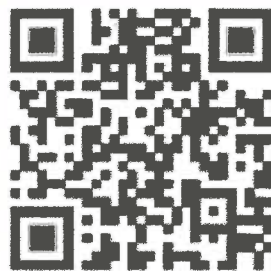
Please submit photos to PIO shop, and before posting to personal social media accounts, take a moment to review social media guidelines found here:
<https://www.usda.gov/digital-strategy/social-media>

- We now have Public Information Officers at both Etna base camp and Trinity camp.

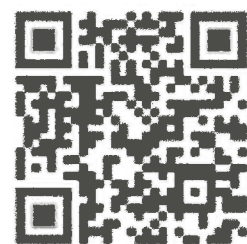
Come see us!

- Lost & Found can be located in the PIO tent

Mailing Address:
General Delivery, River
Complex
C/O Your Name
119 Diggles St., Etna, CA
96027



Klamath NF



Inciweb

Effective Waterbars

When locating and building water bars, place them the right **distance** apart, at a **diagonal** to the fire line, so that they **divert**, then **discharge**, then **dissipate** the energy of the flowing water. Be sure to make them deep enough so they'll be durable, and that soil does **not block** the water bar outlet.

Recommended spacing for waterbars on fire lines.

Fire line slope %	Degrees	Maximum Distance Apart (feet)
1-5flat-3°.....	200
6-204-11°.....	125
21-4011-22°.....	60
41-6023-31°.....	40
>60	25

Waterbars should be at least two pulaskis (4-6 inches) wide and 12-24 inches high for handlines. For dozer lines, waterbars may be 2-3' high and the 5-6' across. They should survive the heaviest rain storm...think 6" rain in 36 hours.

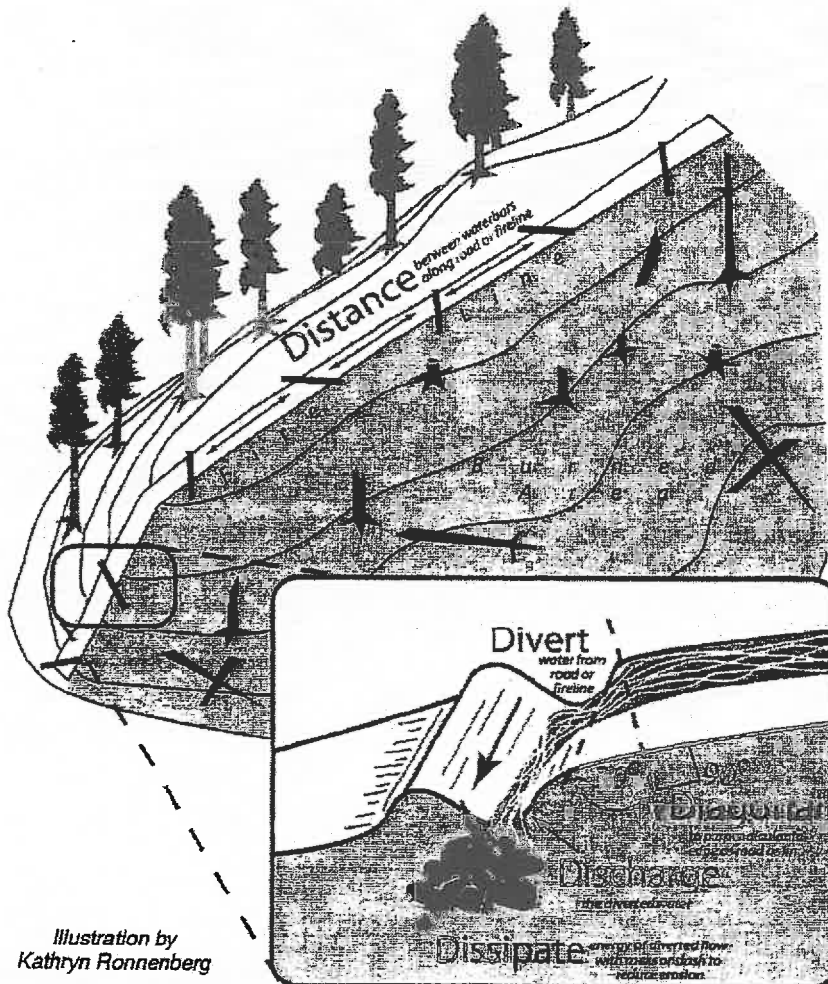


Illustration by
Kathryn Ronnenberg

Training Message

TRAINERS:

If you leave the incident before your trainee or you are transitioning out, or if your trainee is no longer assigned to you, you will need to complete a performance evaluation for the time the trainee was assigned to you.

TRAINEES:

In order to receive documented credit for your training assignment you must close out with the Training Specialist before you Demob. When as much work (as possible) has been completed in your PTB for this incident conduct the “close-out” process with the TNSP to save you time at DMOB
**** (THIS INCLUDES ASSIGNMENTS ENDING WITH TRANSITION) ****

Submit/Upload the following during the “exit interview”

- A completed and signed ICS 225 or 226 Performance Evaluation
 - A completed Exit Interview Form
 - A completed Task Book Evaluation

Chad Englert - TNSP

Englertc@cityofmerced.org

209-614-9031

Training Check-In



Training Exit Interview



**TENTATIVE DEMOB
River Complex US-CA-KNF-006385**

10/7/2021

OVERHEAD

FOBS	MORENO, SEAN PAUL ***	0700	O-1456
DECK	TREFON JR, WILLIAM WASSILLE***	0700	O-1388
IMET	MALINGOWSKI, JULIE ANN	0715	O-1642
BCMG	SANGSTER, SAMUEL	0715	O-1491
HEBM	STEWART, LEE	0730	O-627
TFLD	JANES, BRIAN	0730	O-1374
RESL	KNOX, JOSLYN	0745	O-1640
HMBG	HILL, MICHAEL	0745	O-1452
COML	GIESER, GARY	0800	O-1543
HRSP	MATSUMONJI, AUDREY	0800	O-1645
HMBG	BRADSHAW, JOSEPH	0815	O-1685

CREW

CC	FORTUNA 4	0700	C-275
----	-----------	------	-------

EQUIPMENT

DOZ2	PVT - STOCKMEN'S	0715	E-622
------	------------------	------	-------

10/8/2021

OVERHEAD

FOBS	MEGINLEY JR, WILLIAM FLOYD ***	0700	O-1458
EQPM	KILE, ZEBULON	0700	O-1463
RCDM	DOYLE, DARCEY LEE	0715	O-1305
EMTF	ANSELL, JONATHAN E	0715	O-1499
FOBS	NULTY, PATRICK	0730	O-1568
FACL	HAMMOND, JANINE L	0730	O-1472
PIOF	COSEL, BENJAMIN M	0745	O-1514
SOF2	JENSEN, KELLY K	0800	O-1436
MISC	AZ-FRY TEAM 2	815	O-1351
COST	JOHNS, ANTHONY	815	O-1544
RADO	MALAMED, MAX	830	O-1554
PTRC	RUTHERFORD, DAULTON	830	O-1582
BCMG	OHS, KYLE	845	O-1605

**TENTATIVE DEMOB
River Complex US-CA-KNF-006385**

10/8/2021

<u>CREW</u>			
HC2	WEST COAST REFORESTATION INC	0700	C-266
HC2	LAVA RIVER FORESTRY INC.-LAVA 1	0745	C-267
HC2	MR CONTRACTING - CREW 1	0830	C-269
HC2I	KLAMATH CREW 14	0915	C-282
HC1	CHENA IHC	1000	C-281
CC	TAHOE 6	1130	C-226
HC1	PRINEVILLE IHC	1045	C-276

<u>EQUIPMENT</u>			
EXCA	BRAD INGRAM CONSTRUCTION	0715	E-754
EXCA	M. PETERS TYPE 2 EXCAVATOR	0730	E-756

10/9/2021

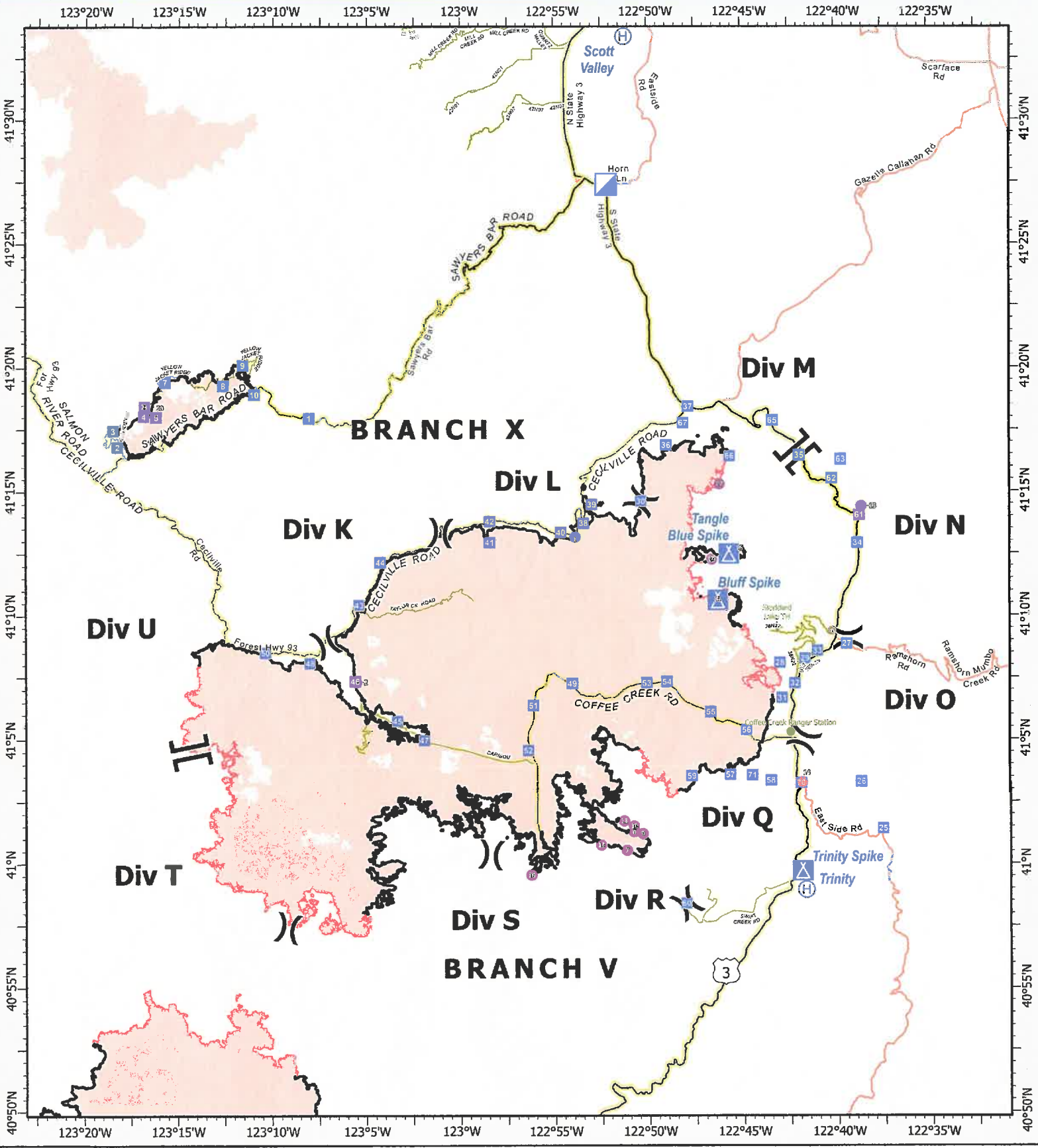
<u>OVERHEAD</u>			
FAL1	SENSECQUA, KELLY A	0700	O-1511
FELB	MORAGA-RENTSCH, LUIS L	0700	O-1510
DOCL	CONTY NIEVES, ELVIRA CELIA	0715	O-1284

<u>CREW</u>			
HC1	CHENA IHC	0700	C-281
HC2	FIRST STRIKE ENVIRO CO - FSE	0745	C-265

<u>EQUIPMENT</u>			
WTT1	5J WATER	0715	E-308
CHIP	NORTH ZONE FALLERS	0730	E-497

Resources requiring air travel need to submit a flight request using the QR code on the front of the IAP at least 72 hours prior to demobilization date.

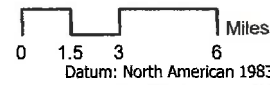
***** = air travel**



River Complex

CA-KNF-006385
10/01/2021 16:00
198,659 acres
IR updated 9/30/21 21:00

- Helispot
- Ⓜ Helibase
- ▣ Incident Command Post
- ▣ Drop Point
- ▣ Camp
- ⌵ Division Break
- ⌵ Branch Break
- ▭ Wildfire Daily Perimeter
- Highway
- Main Route
- Local



ICP Facilities Map

River Complex
CA-KNF-006385



10/02/21



Deer Creek

Situation

GIS

Resources
IMET FBAN

Operations
Air Ops Safety

Resource
Advisors

Finance
Cost
Equipment/ Time

IWI
Meeting Space

HR

ITSS

Logistics
Facilities

Comm Techs
(Cloning)

Central
Copy Trailer

Planning
Checkin
Demob.

IC

PIO
PIO

Liaison

Agency
Admin

Medical Unit

Communication
Trailer

Sleeping Area

Overhead
Camping

Isolation

Laundry

Overhead
Camping

Briefing
Area

3

Parking

Sleeping
Trailer

Sleeping
Trailer

Sleeping
Trailer

Sleeping
Trailer

Sleeping
Trailer

Sleeping
Trailer

Fuel

Kitchen

Ordering

Lunches

Ice

Supply

Security

Entrance

3

S GA-3

ICP Main Street

Overhead parking

Overhead parking

Overhead parking

EXIT

ROAD LOG

Weed
Wash

Ground
Support

(Features not to scale)



Test early Test often!!

USDA Forest Service



Free COVID-19 tests are available for
wildland fire personnel!!!

Not just for Forest Service personnel! Anyone associated with wildland fire work is welcome.

To get tested for free, go to the

**Klamath National Forest Headquarters (aka "Klamath
Supervisor's Office")**

1711 South Main St, Yreka, CA 96097 - 6:30 AM to
8:30 PM every day!

Please use the QR code to the right to register (either before or on-site) for the test administered by Emergency Response Logistics, Inc. That QR code will take you to a form.



In the interest of protecting each other and our families, we encourage testing early and often! Please contact testing.klamath1@gmail.com if you have questions or comments.

All USFS employees and non-USFS personnel assigned to fires in the Klamath NF area or passing through Yreka en route to or from fire assignments are encouraged to stop to be tested prior to reporting to the assignment or traveling to another site or home.

A core value of the Forest Service is safety. This testing availability is an additional step in safeguarding human life and protecting our most valuable resources. Our Code and Commitments include being trusted to "do right" by each other and the communities we serve.



COVID mitigation efforts are imperative in order for us to complete our mission!

PREVENTION AND MANAGEMENT

Monitor yourself and your crew

Wear face coverings

Physical distance

Clean and Disinfect

Isolate when ill

REPORTING GUIDELINES

In the event of a symptomatic person or persons, isolate those that are symptomatic, then contact the Incident Medical Unit Leader immediately.

Incident Medical Unit Leader

Primary Contact: (510) 507-5893

Secondary Contact: (530) 467-1508

COVID SYMPTOMS

- Cough more than expected?
- Shortness of breath or difficulty breathing?
- Fever? Chills?
- Muscle pain, outside of normal for firefighting?
- Sore throat?
- Loss of taste or smell?
- Headache, Fatigue, Nausea or Diarrhea?
- Congestion or runny nose?

Keep yourself healthy

Keep others Healthy

Safeguard our biggest asset....

YOU!

**REPORT CONCERNS
THROUGH YOUR
CHAIN OF COMMAND**

MEDICAL PLAN _ ICS 206	1. INCIDENT NAME: River Complex	2. DATE PREPARED: 10/6/21	3. TIME PREPARED: 1730	4. OP. PERIOD: 10/7/21 - 10/8/21 0700-0700
---	--	--	---	---

5. INCIDENT MEDICAL AID STATIONS

MEDICAL AID STATIONS	LOCATION	R.N. & EMT	
		YES	NO
Mountain Medics - Medical Support Trailer	ICP - Etna, CA	X	

6.a. AIR AMBULANCES

NAME	LOCATION	CONTACT	PARAMEDICS	
			YES	NO
Air Ambulance / Type 3	Medford, OR	River Communications	X	
CHP (Daytime only Hoist) / Type 3	Redding, CA	River Communications	X	
CAL Fire 102 (Daytime only Hoist) / Type 2	Kneeland, CA	River Communications		X
Coast Guard (Night Hoist) / Type 2	McKinleyville, CA	River Communications	X	

6.b. GROUND AMBULANCES & REMS

NAME	LOCATION	PARAMEDICS	
		YES	NO
Mountain Medics AMB # 1	DP 56	X	
Mountain Medics AMB # 2	H1	X	
RENO REMS	DP 35	X	

7. HOSPITALS _ GPS DATUM - WGS 84

NAME	ADDRESS	TRAVEL TIME		PHONE LAT, LONG	HELIPAD		BURN CENTER	
		AIR	GRND		YES	NO	YES	NO
Fairchild Medical Center (Level 4 Trauma Center)	444 Bruce St. Yreka, CA	25min.	2 hr.	530-842-4121 Lat: 41 43.20 Long: 122 38.70	X			X
Rogue Regional Medical (Level 2 Trauma Center)	2825 E Barnett Rd. Medford, CA	1 hr.	3 hrs	541-789-7000 Lat: 42 19.10 Long: 122 49.50	X OR99			X
Mercy Medical Center (Level 2 Trauma Center)	2175 Rosaline Ave. Redding, CA	30 min.	3 hrs.	530-225-6000 Lat: 40 34.14 Long: 122 23.97	X 7CA3			X
UC Davis Medical Center (Level 1 Trauma & Burn)	2315 Stockton Blvd. Sacramento, CA	2 hr.	5.5 hrs.	916-734-3636 Lat: 38 33.20 Long: 121 27.28	X 3CLO		X	

8. MEDICAL EMERGENCY PROCEDURES

LINE "MEDICAL EMERGENCY" PLAN:

Crew Supervisor to contact Division Supervisor/Operations with:

- Patient Complaint, Condition and Location via Tactical or Command Frequency. **Priority 1/Red & 2/Yellow** patients
- Triggers Incident within Incident (IWI)

Division Supervisor/*POC contacts River Communications:

- Division Supervisor or *POC will run "**Medical-Emergency**" on Command Frequency.
- **Division Supervisor** or *POC to use "**Medical Plan (ICS 206 WF)**" worksheet in the IAP or IRPG.
- Communications contacts Medical Unit Leader on the Command Frequency or cell phone (909-559-5196)

***POC (Point of Contact)**

LINE "NON-EMERGENCY INCIDENT"

PLAN:

Crew Supervisor to contact Division Supervisor with:

- Patient Complaint, Condition and Location via Tactical or Command Frequency. **Priority 3/Green** Patients
- Does not trigger Incident within Incident (IWI).

Division Supervisor/POC Contacts River Communications

- Division Supervisor or *POC will run "**Non-Emergency Incident**" on the Command Frequency.
- Division Supervisor or *POC to use "**Medical Incident Report**" worksheet on back of this page or in IRPG.
- Communications contacts Medical Unit Leader on the Command Frequency or Cell Phone (909-559-5196)

IN-CAMP – 24 HOUR MEDICAL

Contact River Communications with: Patient Complaint, Condition, and Location via phone (530) 467-1509 or

ICS 206	9. PREPARED BY: (Medical Unit Leader) Josh Fudge MEDL/Linda Buell MEDL(t) <i>[Signature]</i>	10. REVIEWED BY: (Safety Officer) Tom Zeulner SOF2 <i>[Signature]</i>
---------	---	--

MEDICAL PLAN (ICS 206 WF)

Controlled Unclassified Information//Basic

Medical Incident Report

FOR A NON-EMERGENCY INCIDENT, WORK THROUGH CHAIN OF COMMAND TO REPORT AND TRANSPORT INJURED PERSONNEL AS NECESSARY.

FOR A MEDICAL EMERGENCY: IDENTIFY ON SCENE INCIDENT COMMANDER BY NAME AND POSITION AND ANNOUNCE "MEDICAL EMERGENCY" TO INITIATE RESPONSE FROM IMT COMMUNICATIONS/DISPATCH.

Use the following items to communicate situation to communications/dispatch.

1. CONTACT COMMUNICATIONS / DISPATCH (Verify correct frequency prior to starting report)

Ex: "Communications, Div. Alpha. Stand-by for Emergency Traffic."

2. INCIDENT STATUS: Provide incident summary (including number of patients) and command structure.

Ex: "Communications, I have a Red priority patient, unconscious, struck by a falling tree. Requesting air ambulance to Forest Road 1 at (Lat./Long.) This will be the Trout Meadow Medical, IC is TFLD Jones. EMT Smith is providing medical care."

Severity of Emergency / Transport Priority	<input type="checkbox"/> RED / PRIORITY 1 Life or limb threatening injury or illness. Evacuation need is IMMEDIATE <i>Ex: Unconscious, difficulty breathing, bleeding severely, 2° – 3° burns more than 4 palm sizes, heat stroke, disoriented.</i> <input type="checkbox"/> YELLOW / PRIORITY 2 Serious Injury or illness. Evacuation may be DELAYED if necessary. <i>Ex: Significant trauma, unable to walk, 2° – 3° burns not more than 1-3 palm sizes.</i> <input type="checkbox"/> GREEN / PRIORITY 3 Minor Injury or illness. Non-Emergency transport <i>Ex: Sprains, strains, minor heat-related illness.</i>	
Nature of Injury or Illness & Mechanism of Injury		Brief Summary of Injury or Illness <i>(Ex: Unconscious, Struck by Falling Tree)</i>
Transport Request		Air Ambulance / Short Haul/Hoist Ground Ambulance / Other
Patient Location		Descriptive Location & Lat. / Long. (WGS84)
Incident Name		Geographic Name + "Medical" <i>(Ex: Trout Meadow Medical)</i>
On-Scene Incident Commander		Name of on-scene IC of Incident within an Incident <i>(Ex: TFLD Jones)</i>
Patient Care		Name of Care Provider <i>(Ex: EMT Smith)</i>

3. INITIAL PATIENT ASSESSMENT: Complete this section for each patient as applicable (start with the most severe patient)

Patient Assessment: See IRPG page 106

Treatment:

4. TRANSPORT PLAN:

Evacuation Location (if different): (Descriptive Location (drop point, intersection, etc.) or Lat. / Long.) Patient's ETA to Evacuation Location:

Helispot / Extraction Site Size and Hazards:

5. ADDITIONAL RESOURCES / EQUIPMENT NEEDS:

Example: Paramedic/EMT, Crews, Immobilization Devices, AED, Oxygen, Trauma Bag, IV/Fluid(s), Splints, Rope rescue, Wheeled litter, HAZMAT, Extrication

6. COMMUNICATIONS: Identify State Air/Ground EMS Frequencies and Hospital Contacts as applicable

Function	Channel Name/Number	Receive (RX)	Tone/NAC *	Transmit (TX)	Tone/NAC *
COMMAND					
AIR-TO-GRND					
TACTICAL					

7. CONTINGENCY: Considerations: If primary options fail, what actions can be implemented in conjunction with primary evacuation method? Be thinking ahead.

8. ADDITIONAL INFORMATION: Updates/Changes, etc.

REMEMBER: Confirm ETA's of resources ordered. Act according to your level of training. Be Alert. Keep Calm. Think Clearly. Act Decisively.