

*****CORRECTED*****

INCIDENT ACTION PLAN
SKY FIRE INCIDENT

CA-LNF-003531



Tuesday

OPERATIONAL PERIOD

6/29/2021 0600

to

6/30/2021 0600

*****CORRECTED*****

INCIDENT OBJECTIVES (ICS 202)

1. Incident Name: SKY FIRE	2. Operational Period:	Date From: 6/29/2021	Date To: 6/30/2021
		Time From: 0600	Time To: 0600

3. Objective(s):

- Management Objectives**
- Provide for firefighter and public safety as the highest priority through sound risk management and life first principles
 - Maximize opportunities for success through risk-based decision making when developing strategies with the highest probability for success
 - Provide accurate and timely information to agencies, stakeholders, and the public
 - Follow all CDC recommendations and mitigations regarding COVID-19
 - Minimize adverse effects from suppression actions on riparian areas, watersheds, and Mountain Yellow Legged Frog and Spotted Owl habitats
 - Maintain fiscal responsibility keeping cost commensurate with the values at risk.

- Control Objectives**
- Keep the fire south of the 25N15 road and line spot fire
 - Keep the fire west of Carr Mine
 - Keep the fire north of the Philbrook Lake and Philbrook Creek
 - Construct direct line on the west flank

General Situational Awareness:

Steep and rugged terrain, critically dry and receptive fuel beds, active area for fire history and drought stressed trees.

COVID MITIGATIONS:

All unvaccinated person must wear a mask indoors and outdoors when physical distancing cannot be maintained

Maintain a module of one, wash your hands and sanitize surfaces

5. Site Safety Plan Required? Yes No


Approved Site Safety Plan(s) Located at:

- 6. Incident Action Plan**
- | | | | |
|---|--|---|--|
| <input checked="" type="checkbox"/> ICS 203 | <input type="checkbox"/> ICS 215A | <input type="checkbox"/> ICS 205 A | <input type="checkbox"/> |
| <input checked="" type="checkbox"/> ICS 204 | <input checked="" type="checkbox"/> ICS 220 | <input type="checkbox"/> Training Message | <input type="checkbox"/> |
| <input checked="" type="checkbox"/> ICS 205 | <input type="checkbox"/> Facility Maps | <input checked="" type="checkbox"/> Travel Map | <input type="checkbox"/> |
| <input checked="" type="checkbox"/> ICS 206 | <input checked="" type="checkbox"/> Weather Forecast | <input type="checkbox"/> Demob Plan | <input type="checkbox"/> County Health Message |
| <input checked="" type="checkbox"/> ICS 208 | <input checked="" type="checkbox"/> Fire Behavior | <input checked="" type="checkbox"/> Finance Message | <input checked="" type="checkbox"/> ICS 214 |

7. Prepared By: Steve Anderson, Greg White(T Position/Title: PSC Signature:

8. Approved by Incident Commander: Mike Nobles Signature:

ORGANIZATION ASSIGNMENT LIST (ICS 203)

1. Incident Name: SKY FIRE		2. Operational Period: Date From: 6/29/2021 Time From: 0600		Date To: 6/30/2021 Time To: 0600	
3. Incident Commander(s) and Command Staff:			7. Operation Section:		
IC/UC's	Mike Nobles	Operations	Jim Snow, Chris St. Pierre(T)		
Deputy	Alan Taylor	Planning Operations	Al Ward, Michael Page(T)		
Safety Officer	Paul Tompkins, Mike Seymour(T)	Night Operations	John Owings, Greg Overacker		
Information Officer	Seneca Smith	Staging Area			
Liaison Officer	Allen Johnson, Don Smith(T)		Day		
4. Agency/Organization Representatives:		Division/Group	A	Jimmy Hidalgo	
LNF CH 1	Bill Miller	Division/Group	W/Z	Robert DeCamp	
LNF CH 2	Dustan Mueller	Division/Group	Butte Contingency	Jason Flores, Andy Wordin(T)	
CAL FIRE/BTU	DC Garrett Sjolund	Division/Group			
Agency Administrator	Amanda McAdams, Russell Nickerson(T)	Division/Group			
Butte County S.O.	LT Steve Collins	Branch	IA	Rob Szczepanek	
Butte County S.O.	Emergency Manager Dave Ennes	Division/Group	IA	Rob Noxon	
SPI Timber	Steve Roberts	Division/Group			
PG&E Butte County	Dave Hawks	Division/Group			
		Division/Group			
		Division/Group			
			Night		
		Division/Group	A	Kristian Litz	
		Division/Group	W/Z	Nate Leatherman	
		Division/Group			
		Division/Group			
		Division/Group			
		Branch			
		Division/Group			
5. Planning Section:		Division/Group			
Chief	Steve Anderson, Greg White(T)	Division/Group			
Deputy	Ken Bates	Division/Group			
Resource Unit	Josh Clark, Mike Yeun(T)	Division/Group			
Situation Unit	Frank Baker	Branch			
Documentation Unit		Division/Group			
Demobilization Unit	Jan Grisedale	Division/Group			
GISS	Rene Gonzalez, Dawn Hutchinson	Division/Group			
FBAN	Dan O'Connor	Division/Group			
IMET		Division/Group			
Training Tech Spec		Air Operations Branch		Director:	JoAnn Overacker
		Air Support Group Supervisor			
		Air Tactical Group Supervisor			
6. Logistics Section		Helibase Manager			
Chief	Scott Ashbach, Martie Hale, JD Fox(T)				
Supply Unit	Ruben Lopez(T)	8. Finance/Administration Section:			
Facilities Unit	Dave Seneviratne, James Jones	Chief	Lisa Wilson		
Ground Support Unit	Mark Bagley	Time Unit	Laura Wilson, Rebecca Lang		
Communications Unit	Chris Perry, David Head(T)	Procurement Unit			
Medical Unit	Brandon Bennewate	Comp/Claims Unit			
		Cost Unit			
Prepared By: Name: Greg White		Position/Title: PSC(T)		Signature: 	
ICS 203		Date/Time: 6/28/2021 2300 hours		<small>NIMS IAP</small>	

SPOT FORECAST for Sky...CA IMT 12
644 PM PDT Mon Jun 28 2021

National Weather Service SACRAMENTO CA

Forecast is based on forecast start time of 0600 PDT on June 29.
If conditions become unrepresentative...contact the National Weather
Service.

.DISCUSSION...

Low pressure area off the Northern California coast will continue to
move northward. High pressure over the interior will keep the area
warm and dry with poor to moderate humidity recovery at night.
Haines index the next couple of days is 5 or 6 but this typically
is not used in CA. Fosberg index remains low the next two days which
is an index that represents expected flame length and drying is indicating
low flame length. That said your maximum rate of plume growth will
occur between 3 and 7 pm each afternoon and coincide with maximum
daytime heating.

.TUESDAY...

Sky/weather.....Sunny.
Max temperature.....83-88.
Min humidity.....16-21 percent.
Wind (20 ft).....
Slope/valley.....East wind 2 to 5 mph shifting southwest 6 to 12 mph
after 10 am. Gusts up to 20 mph in the afternoon.
Ridgetop.....South around 8 mph.
Mixing height.....100 ft AGL increasing to 5500-7200 ft AGL late
in the morning.
Transport winds.....South around 8 mph.
CWR.....0 percent.
LAL.....1.

.TUESDAY NIGHT...

Sky/weather.....Clear.
Min temperature.....64-69.
Max humidity.....33-38 percent.
Wind (20 ft).....
Slope/valley.....Southwest winds 5 to 10 mph shifting to the
southeast 5 to 8 mph by midnight.
Ridgetop.....South around 5 mph.
Mixing height.....5600 ft AGL decreasing to 100-1700 ft AGL early
in the evening.
Transport winds.....South around 5 mph.
CWR.....0 percent.
LAL.....1.

.WEDNESDAY...

Sky/weather.....Sunny.
Max temperature.....79-84.
Min humidity.....21-26 percent.
Wind (20 ft).....
Slope/valley.....East winds 3 to 7 mph shifting to the
southwest 8 to 13 mph in the afternoon.
Ridgetop.....South around 8 mph.
Mixing height.....100-200 ft AGL increasing to 4500-5500 ft AGL
late in the morning.
Transport winds.....South around 8 mph.
CWR.....0 percent.
LAL.....1.
Forecaster...RB

FIRE BEHAVIOR FORECAST

FORECAST NUMBER: 1	TYPE OF FIRE: Wildland
FIRE NAME: Sky	OPERATIONAL PERIOD: 6/29 24 Hour
DATE ISSUED: 6/28/2021	TIME ISSUED: 2000
UNIT: Lassen National Forest	SIGNED: /s/ Dan O'Connor Typed/printed: Dan O'Connor FBAN

INPUTS

WEATHER SUMMARY:

Hot and dry conditions will continue through the week over interior Northern California. Isolated afternoon thunderstorms possible each day over the Sierra Nevada. Thunderstorms may contain gusty wind with little associated precipitation.

Temperatures 80-90 // Relative Humidity mid-teens // Unstable atmosphere- Haines 5/6

OUTPUTS

FIRE BEHAVIOR

GENERAL:

***Northern Sierra is experiencing Exceptional drought conditions following the 2020/2021 winter*

***1000 hour fuels are calculated to be 8% or less, which is a record low for June*

The fire is currently burning in an area that has no recorded fire history. Anticipate heavy dead and down fuels that hold onto heat for an extended amount of time. Heavies will likely fully consume and will be very receptive to spotting.

If the fire were to become established outside of containment lines, be especially heads up for areas of dense brush and ladder fuels that will rapidly escalate fire spread into the canopies, contributing to further spotting.

Morning winds out of the east may be enhanced within the Philbrook Creek draining, so be aware of any holdover heat through the night on the southern portion of the fire.

Fuel Models	<i>Timber Litter (TL5)</i>	<i>Timber/Understory (TU5)</i>	<i>Shrub (SH5) // IA</i>
<i>Estimated Flame Lengths</i>	Backing 0-1' Flanking 1-2' Head 2-4'+ Outflow 4-5'++	Backing 4-6' Flanking 6-8'+ Head 8-12'+ Outflow 15-20'++	Backing 10-12' Flanking 14-16' Head 16-20' Outflow 25-30'
<i>Estimated Rates of Spread</i>	Backing 3 ch/hr Flanking 4 ch/hr Head 5 ch/hr+ Outflow 17 ch/hr++	Backing 6 ch/hr Flanking 9 ch/hr Head 11 ch/hr+ Outflow 32 ch/hr++	Backing 40 ch/hr Flanking 60 ch/hr Head 70 ch/hr Outflow 225 ch/hr

SPECIFIC:

All areas: Further growth is not anticipated at this time, but be aware of very long burn down times and potential for spotting across containment lines into decadent fuels.

Initial Attack: Fires are exhibiting rapid rates of spread when enhanced by fuels, winds, or terrain this year.

AIR OPERATIONS

Complex terrain, very high temperatures, and afternoon thunderstorm activity could increase turbulence over the fire area.

SAFETY

Don't let your guard down on the Sky Fire- the area is experiencing extreme drought conditions and very high temperatures in an area with little fire history. *On relatively small fires or deceptively quiet areas of large fires* is one of the common denominators of fire behavior on tragedy fires

S A F E T Y M E S S A G E

Sky Fire

June 29, 2021 0600 – June 30, 2021 0600

USE **L**OOKOUTS, **C**OMMUNICATIONS, **E**SCAPE ROUTES, **S**AFETY ZONE
LCES IN PLACE EVERY TIME

Major Hazards and Risks:

- ✓ **Snags** continue to be a major hazard. Identify trees that may have been effected by the fire, that may pose more hazardous conditions to continue work under. With continuing burning and smoldering around their base will reduce their structural integrity.
- ✓ **Situational Awareness** - Conduct thorough briefings with your crew on all components of the IAP. Weather forecast should be highlighted in crew briefing today. Crews know where your EMTs are, and ensure communications are in place. Make LCES personal for your piece of real estate.
- ✓ **Fire Behavior** - Watch for areas previously cold to come back to life due to drying conditions and winds. Extremely low fuel moistures could create fast moving fire conditions.
- ✓ **Communications** - Command may have dead spots, inform communications if you locate any dead spots. Keep in constant communications with your crew, adjacent forces and appropriate overhead. Test command before engaging —use human repeaters where needed to ensure positive communications.
- ✓ **Driving Safety** - Slow down, we have no reason to be rushing around. Expect other traffic on the 25N05 & 25NO5 D spur roads. If conditions don't warrant passing on narrow road create a traffic plan and communicate direction of travel.
- ✓ **Heavy Equipment** - Ensure all personnel are visible to dozers, maintain communications and mitigate overhead and rolling hazards. Maintain adequate separation between dozers and crews. Utilize traffic control on roads when transporting dozers to different parts of the fire.

Prepared by: Mike Seymour - Safety Officer (T) **Date:** 6/28/2021

ASSIGNMENT LIST (ICS 204 WF)

CONTROLLED UNCLASSIFIED
INFORMATION//BASIC

1. Incident Name: <p style="text-align: center; font-weight: bold;">SKY FIRE</p>	2. Operational Period: Date From: 06/29/21 Date To: 06/30/21 Time From: 0600 Time To: 0600	3. Branch Division <p style="text-align: center; font-size: 1.2em;">Day A</p> <p style="text-align: center;">Page 1 of 1 Alpha</p>
--	---	---

4. Operations Personnel: Operations Section Chief: Jim Snow, Chris St. Pierre(T) Branch Director: Division/Group Supervisor: Jimmy Hidalgo	Night Ops: John Owings, Greg Overacker Branch Safety: Air Attack:
--	--

5. Resources Assigned:		** Resources Below in Bold are 12 Hour **					
Resource Identifier	ALS	LWD	Leader	Personnel	Request #	Hours	Reporting Location
HC2IA Lewis & Clark				22	C-5	0600-0600	Philbrook Reservoir
HC2IA Georgia				21	C-1	0600-0600	Philbrook Reservoir
Crew 514 NO SHOW						0600-0600	Philbrook Reservoir
ENG3 LNF 316 *				6		0600-0600	Philbrook Reservoir
ENG3 PNF 330 *				5	E-3	0600-0600	Philbrook Reservoir
ENG3 Denver 301				4	E-11	0600-0600	Philbrook Reservoir
DOZ MDF 4				2		0600-0600	Philbrook Reservoir
WT 19 NO SHOW						0600-0600	Philbrook Reservoir
WT 20				1		0600-0600	Philbrook Reservoir
Modoc Crew 1				10	0-7		
ENG4 USFW 2443							
ENG4 SD Forestry					E-14		
FALM North zone				2	0-27		
WT2 Precision Tow (24 hr)					0-37		

6. Work Assignments:
 Task: Continue to establish direct control lines from DIV A/Z to DIV A/W Break
 Purpose: To keep fire within existing perimeter
 End State: Fire growth limited, Values at risk protected.

7. Special Instructions:
 Resources with * are pre-identified and available for initial attack. Be familiar with IA Branch communications.

8. Communications

Name	Ch	Function	Rx Freq	Rx Tone	Tx Freq	Tx Tone	Notes
LNF	1	Dispatch/CMD	173.1875 N		164.8000 N	OST	LNF RPT / Tone 5
R5 T4	3	TACTICAL	166.5500N		166.5500N		
A/G 1	14	TACTICAL	166.6125 N		166.6125 N		AIR to GROUND 1
CALCORD	15	MEDICAL	156.0750N	T6 - 156.7	156.0750N	T6 - 156.7	T6 - Medical Evac
GUARD	16	Emergency Only	168.6250 N		168.6250 N		T1 - AIR GUARD - emerg. use only

9. Prepared by: Name: Josh Clark, Mike Yeun(T) RESL

Signature:

ICS 204 Date/Time: 6/28/2021 2200 Personnel Count: 0

INCIDENT RADIO COMMUNICATIONS PLAN		Incident Name		SKY FIRE		Date/Time Prepared		Operational Period Date/Time	
Zn / Ch	Function	Channel Name/Trunked Talkgroup	Assignment	RX Freq	RX Tone/NAC	TX Freq	TX Tone/NAC	Mode A, D, M	Remarks
1	Dispatch/CMD	LNF	All Divisions	173.1875	0.0	164.8000	OST	A	LNF RPT / Tone 5
2	Command	NIFC C2	UNASSIGNED	170.4500	123.0	168.1000	123.0	A	UNASSIGNED
3	Tactical	R5 T4	DIV A	166.5500	0.0	166.5500	0.0	A	
4	Tactical	NIFC T6	CONTINGENCY	166.7750	0.0	166.7750	0.0	A	
5	Tactical	NIFC T7	DIV WIZ	168.2500	0.0	168.2500	0.0	A	
6	Tactical	NIFC T5	IA TAC	166.7250	0.0	166.7250	0.0	A	IA TAC Inside TFR
7	Tactical	NIFC T3	UNASSIGNED	168.6000	0.0	168.6000	0.0	A	UNASSIGNED
8		Blank							
9		Blank							
10		Blank							
11	Tactical	VFIRE 26	UNASSIGNED	154.3025	156.7	154.3025	156.7	A	Tone 6 UNASSIGNED
12		Blank							
13	Tactical	A/G 1	All Divisions	166.6125	0.0	166.6125	0.0	A	AIR to GROUND 1
14	Tactical	A/G 2	All Divisions	167.0625	0.0	167.0625	0.0	A	AIR to GROUND 2
15/19	Tactical	CALCORD	Medical	156.0750	156.7	156.0750	156.7	A	T6 - Medical Evac
16/20	Emergency only	GUARD	All Divisions	168.6250	0.0	168.6250	110.9	A	T1 - AIR GUARD - emerg. use only
Prepared By (Communications Unit Leader)									
Chris Perry									
Deviation is assumed to be narrow band unless otherwise noted in the remarks. Mode refers to either "A" (analog), "D" (digital) or "M" (mixed mode).									
								Latitude, Longitude	1/14/14 v.5

ASSIGNMENT LIST (ICS 204 WF)

CONTROLLED UNCLASSIFIED
INFORMATION/BASIC

1. Incident Name: <p style="text-align: center; font-weight: bold;">SKY FIRE</p>	2. Operational Period: Date From: 06/29/21 Date To: 06/30/21 Time From: 0600 Time To: 0600	3. Branch Division <p style="text-align: center; font-size: 1.2em;">Day W/Z</p>
--	---	---

4. Operations Personnel:		Page 1 of 1 Whiskey/Zulu
Operations Section Chief: Jim Snow, Chris St. Pierre(T)	Night Ops: John Owings, Greg Overacker	
Branch Director:	Branch Safety:	
Division/Group Supervisor: Robert DeCamp	Air Attack:	

5. Resources Assigned:		** Resources Below in Bold are 12 Hour **					
Resource Identifier	ALS	LWD	Leader	Personnel	Request #	Hours	Reporting Location
IHC EI Dorado				20	C-3	0600-0600	Philbrook Reservoir
IHC Diamond Mountain *					C-2	0600-0600	Philbrook Reservoir
HC2IA Springville				18	C-6	0600-0600	Philbrook Reservoir
HC2 Hat Creek 3				9	C-11	0600-0600	Philbrook Reservoir
Crew 510 No Show						0600-0600	Philbrook Reservoir
ENG3 LNF 384 * No Show					E-20	0600-1800	Philbrook Reservoir
ENG3 SHF 362				5	E-13	0600-1800	Philbrook Reservoir
ENG3 PNF 34				5	E-4	0600-1800	Philbrook Reservoir
ENG Oak Creek 84				4		0600-1800	Philbrook Reservoir
ENG3 Firestorm				3	E-16	0600-1800	Philbrook Reservoir
DOZ2 PNF 3					E-5	0600-1800	Philbrook Reservoir
WT 18 No Show						0600-1800	Philbrook Reservoir
IHC Plumas				18	C-4		
FALM North Zone 1				2	O-20		
FALM North Zone 2				2	O-21		
ENG 5 Stone mtn				3	E-27		
WT1 Oilar 2				1	E-35		
WT1 Oilar 1				1	E-36		

6. Work Assignments:
 Task: Continue to establish direct control lines from DIV Z/A to DIV W/A Break
 Purpose: To keep fire within existing perimeter
 End State: Fire growth limited, Values at risk protected.

7. Special Instructions:
 Resources with * are pre-identified and available for initial attack. Be familiar with IA Branch communications.

8. Communications							
Name	Ch	Function	Rx Freq	Rx Tone	Tx Freq	Tx Tone	Notes
LNF	1	Dispatch/CMD	173.1875 N		164.8000 N	OST	LNF RPT / Tone 5
NIFC T7	5	TACTICAL	168.2500N		168.2500N		
A/G 1	14	TACTICAL	166.6125 N		166.6125 N		AIR to GROUND 1
CALCORD	15	MEDICAL	156.0750N	T6 - 156.7	156.0750N	T6 - 156.7	T6 - Medical Evac
GUARD	16	Emergency Only	168.6250 N		168.6250 N		T1 - AIR GUARD - emerg. use only

9. Prepared by: Name: Josh Clark, Mike Yeun(T) RESL
 Signature:
 Date/Time: 6/28/2021 2200 Personnel Count: 0

ICS 204

INCIDENT RADIO COMMUNICATIONS PLAN		Incident Name		Date/Time Prepared		Operational Period Date/Time			
		SKY FIRE		06/28/21 2000		06/29/21 0600 to 06/30/21 0600			
Zn / Ch	Function	Channel Name/Trunked Talkgroup	Assignment	RX Freq	RX Tone/NAC	TX Freq	TX Tone/NAC	Mode A, D, M	Remarks
1	Dispatch/CMD	LNF	All Divisions	173.1875	0.0	164.8000	OST	A	LNF RPT / Tone 5
2	Command	NIFC C2	UNASSIGNED	170.4500	123.0	168.1000	123.0	A	UNASSIGNED
3	Tactical	R5 T4	DIV A	166.5500	0.0	166.5500	0.0	A	
4	Tactical	NIFC T6	CONTINGENCY	166.7750	0.0	166.7750	0.0	A	
5	Tactical	NIFC T7	DIV W/Z	168.2500	0.0	168.2500	0.0	A	
6	Tactical	NIFC T5	IA TAC	166.7250	0.0	166.7250	0.0	A	IA TAC Inside TFR
7	Tactical	NIFC T3	UNASSIGNED	168.6000	0.0	168.6000	0.0	A	UNASSIGNED
8		Blank							
9		Blank							
10		Blank							
11	Tactical	VFIRE 26	UNASSIGNED	154.3025	156.7	154.3025	156.7	A	Tone 6 UNASSIGNED
12		Blank							
13	Tactical	A/G 1	All Divisions	166.6125	0.0	166.6125	0.0	A	AIR to GROUND 1
14	Tactical	A/G 2	All Divisions	167.0625	0.0	167.0625	0.0	A	AIR to GROUND 2
15/19	Tactical	CALCORD	Medical	156.0750	156.7	156.0750	156.7	A	T6 - Medical Evac
16/20	Emergency only	GUARD	All Divisions	168.6250	0.0	168.6250	110.9	A	T1 - AIR GUARD - emerg. use only
Prepared By (Communications Unit Leader)				Incident Location		Latitude, Longitude			
Chris Perry				County				1/14/14 v.5	
Deviation is assumed to be narrow band unless otherwise noted in the remarks. Mode refers to either "A" (analog), "D" (digital) or "M" (mixed mode).									

INCIDENT RADIO COMMUNICATIONS PLAN		Incident Name		SKY FIRE		Date/Time Prepared		Operational Period Date/Time	
						06/28/21 2000		06/29/21 0600 to 06/30/21 0600	
Zn / Ch	Function	Channel Name/Trunked Talkgroup	Assignment	RX Freq	RX Tone/NAC	TX Freq	TX Tone/NAC	Mode A, D, M	Remarks
1	Dispatch/CMD	LNF	All Divisions	173.1875	0.0	164.8000	OST	A	LNF RPT / Tone 5
2	Command	NIFC C2	UNASSIGNED	170.4500	123.0	168.1000	123.0	A	UNASSIGNED
3	Tactical	R5 T4	DIV A	166.5500	0.0	166.5500	0.0	A	
4	Tactical	NIFC T6	CONTINGENCY	166.7750	0.0	166.7750	0.0	A	
5	Tactical	NIFC T7	DIV W/Z	168.2500	0.0	168.2500	0.0	A	
6	Tactical	NIFC T5	IA TAC	166.7250	0.0	166.7250	0.0	A	IA TAC Inside TFR
7	Tactical	NIFC T3	UNASSIGNED	168.6000	0.0	168.6000	0.0	A	UNASSIGNED
8		Blank							
9		Blank							
10		Blank							
11	Tactical	VFIRE 26	UNASSIGNED	154.3025	156.7	154.3025	156.7	A	Tone 6 UNASSIGNED
12		Blank							
13	Tactical	A/G 1	All Divisions	166.6125	0.0	166.6125	0.0	A	AIR to GROUND 1
14	Tactical	A/G 2	All Divisions	167.0625	0.0	167.0625	0.0	A	AIR to GROUND 2
15/19	Tactical	CALCORD	Medical	156.0750	156.7	156.0750	156.7	A	T6 - Medical Evac
16/20	Emergency only	GUARD	All Divisions	168.6250	0.0	168.6250	110.9	A	T1 - AIR GUARD - emerg. use only
Prepared By (Communications Unit Leader)									
Chris Perry									
Deviation is assumed to be narrow band unless otherwise noted in the remarks. Mode refers to either "A" (analog), "D" (digital) or "M" (mixed mode). 1/14/14 v.5									

Incident Location

Latitude, Longitude

County

INCIDENT RADIO COMMUNICATIONS PLAN		Incident Name		Date/Time Prepared		Operational Period Date/Time			
		SKY FIRE		06/28/21 2000		06/29/21 0600 to 06/30/21 0600			
Zn / Ch	Function	Channel Name/Trunked Talkgroup	Assignment	RX Freq	RX Tone/NAC	TX Freq	TX Tone/NAC	Mode A, D, M	Remarks
1	Dispatch/CMD	LNF	All Divisions	173.1875	0.0	164.8000	OST	A	LNF RPT / Tone 5
2	Command	NIFC C2	UNASSIGNED	170.4500	123.0	168.1000	123.0	A	UNASSIGNED
3	Tactical	R5 T4	DIV A	166.5500	0.0	166.5500	0.0	A	
4	Tactical	NIFC T6	CONTINGENCY	166.7750	0.0	166.7750	0.0	A	
5	Tactical	NIFC T7	DIV W/Z	168.2500	0.0	168.2500	0.0	A	
6	Tactical	NIFC T5	IA TAC	166.7250	0.0	166.7250	0.0	A	IA TAC Inside TFR
7	Tactical	NIFC T3	UNASSIGNED	168.6000	0.0	168.6000	0.0	A	UNASSIGNED
8		Blank							
9		Blank							
10		Blank							
11	Tactical	VFIRE 26	UNASSIGNED	154.3025	156.7	154.3025	156.7	A	Tone 6 UNASSIGNED
12		Blank							
13	Tactical	A/G 1	All Divisions	166.6125	0.0	166.6125	0.0	A	AIR to GROUND 1
14	Tactical	A/G 2	All Divisions	167.0625	0.0	167.0625	0.0	A	AIR to GROUND 2
15/19	Tactical	CALCORD	Medical	156.0750	156.7	156.0750	156.7	A	T6 - Medical Evac
16/20	Emergency only	GUARD	All Divisions	168.6250	0.0	168.6250	110.9	A	T1 - AIR GUARD - emerg. use only
Prepared By (Communications Unit Leader)		Incident Location		County		Latitude, Longitude			
Chris Perry								1/14/14 v.5	
Deviation is assumed to be narrow band unless otherwise noted in the remarks. Mode refers to either "A" (analog), "D" (digital) or "M" (mixed mode).									

INCIDENT RADIO COMMUNICATIONS PLAN		Incident Name		Date/Time Prepared		Operational Period Date/Time			
		SKY FIRE		06/28/21 2000		06/29/21 0600 to 06/30/21 0600			
Zn / Ch	Function	Channel Name/Ttalkgroup	Assignment	RX Freq	RX Tone/NAC	TX Freq	TX Tone/NAC	Mode A, D, M	Remarks
1	Dispatch/CMD	LNF	All Divisions	173.1875	0.0	164.8000	OST	A	LNF RPT / Tone 5
2	Command	NIFC C2	UNASSIGNED	170.4500	123.0	168.1000	123.0	A	UNASSIGNED
3	Tactical	R5 T4	DIV A	166.5500	0.0	166.5500	0.0	A	
4	Tactical	NIFC T6	CONTINGENCY	166.7750	0.0	166.7750	0.0	A	
5	Tactical	NIFC T7	DIV WIZ	168.2500	0.0	168.2500	0.0	A	
6	Tactical	NIFC T5	IA TAC	166.7250	0.0	166.7250	0.0	A	IA TAC Inside TFR
7	Tactical	NIFC T3	UNASSIGNED	168.6000	0.0	168.6000	0.0	A	UNASSIGNED
8		Blank							
9		Blank							
10		Blank							
11	Tactical	VFIRE 26	UNASSIGNED	154.3025	156.7	154.3025	156.7	A	Tone 6 UNASSIGNED
12		Blank							
13	Tactical	A/G 1	All Divisions	166.6125	0.0	166.6125	0.0	A	AIR to GROUND 1
14	Tactical	A/G 2	All Divisions	167.0625	0.0	167.0625	0.0	A	AIR to GROUND 2
15/19	Tactical	CALCORD	Medical	156.0750	156.7	156.0750	156.7	A	T6 - Medical Evac
16/20	Emergency only	GUARD	All Divisions	168.6250	0.0	168.6250	110.9	A	T1 - AIR GUARD - emerg. use only
Prepared By (Communications Unit Leader)				Incident Location		Latitude, Longitude			
Chris Perry				County				1/14/14 v.5	
Deviation is assumed to be narrow band unless otherwise noted in the remarks. Mode refers to either "A" (analog), "D" (digital) or "M" (mixed mode).									

INCIDENT RADIO COMMUNICATIONS PLAN		Incident Name		SKY FIRE		Date/Time Prepared		Operational Period Date/Time	
						06/28/21 2000		06/29/21 0600 to 06/30/21 0600	
Zn / Ch	Function	Channel Name/Trunked Talkgroup	Assignment	RX Freq	RX Tone/NAC	TX Freq	TX Tone/NAC	Mode A, D, M	Remarks
1	Dispatch/CMD	LNF	All Divisions	173.1875	0.0	164.8000	OST	A	LNF RPT / Tone 5
2	Command	NIFC C2	UNASSIGNED	170.4500	123.0	168.1000	123.0	A	UNASSIGNED
3	Tactical	R5 T4	DIV A	166.5500	0.0	166.5500	0.0	A	
4	Tactical	NIFC T6	CONTINGENCY	166.7750	0.0	166.7750	0.0	A	
5	Tactical	NIFC T7	DIV W/Z	168.2500	0.0	168.2500	0.0	A	
6	Tactical	NIFC T5	IA TAC	166.7250	0.0	166.7250	0.0	A	IA TAC Inside TFR
7	Tactical	NIFC T3	UNASSIGNED	168.6000	0.0	168.6000	0.0	A	UNASSIGNED
8		Blank							
9		Blank							
10		Blank							
11	Tactical	VFIRE 26	UNASSIGNED	154.3025	156.7	154.3025	156.7	A	Tone 6 UNASSIGNED
12		Blank							
13	Tactical	A/G 1	All Divisions	166.6125	0.0	166.6125	0.0	A	AIR to GROUND 1
14	Tactical	A/G 2	All Divisions	167.0625	0.0	167.0625	0.0	A	AIR to GROUND 2
15/19	Tactical	CALCORD	Medical	156.0750	156.7	156.0750	156.7	A	T6 - Medical Evac
16/20	Emergency only	GUARD	All Divisions	168.6250	0.0	168.6250	110.9	A	T1 - AIR GUARD - emerg. use only
Prepared By (Communications Unit Leader)				Incident Location		Latitude, Longitude			
Chris Perry				County					
Deviation is assumed to be narrow band unless otherwise noted in the remarks. Mode refers to either "A" (analog), "D" (digital) or "M" (mixed mode). 1/14/14 v.5									

AIR OPERATIONS SUMMARY

PREPARED BY: JoAnn Overacker

PREPARED DATE/TIME: 06/28/2021

1. INCIDENT NAME: Sky	2. OPERATIONAL PERIOD DATE: 06/29/21	START TIME: 0800	END TIME: 2030	SUNRISE: 0645	SUNSET: 1857
3. REMARKS (Safety Notes, Hazards, Air Operations Special Equipment,, etc.):					
Mop up spot fires. Be prepared for I.A.					
2 Seats available at Chester Air Attack Base					

4. MEDEVAC A/C: See medical plan - use local air med ships.	5. TFR: 1/1003 Radius: 7 NIM Altitude: 11,000 = MSL Lat: 40 01"46 x Lat: 121 25"33 Frequency - 119.1250
--	---

6. PERSONNEL	Phone	7. FREQUENCIES		AM	FM	8. FIXED-WING	# Avail / Type/ Make-Model / FAA N# / Base(s)
		AIR/AIR FW:	AIR/AIR RW:				
AOBD: JoAnn Overacker	209-559-1617	AIR/AIR FW:		119.1250	168.7375	Airtankers	Request as needed
ATGS: Billy Gardunio	530-604-8643	AIR/AIR RW:				Leadplanes	
HLCO:		A/G 1			166.6125	Base FAX #:	
HEBM:		A/G 2			167.0625	ATGS Aircraft	AA 06
		Deck			163.100	Other	

9. HELICOPTERS (Use Additional Sheets As Necessary)

FAA N#	TY	MAKE/MODEL	BASE	AVAIL	START	REMARKS	FAA N#	TY	MAKE/MODEL	BASE	AVAIL	START	REMARKS
5TH	1	KMAX	Quincy	0800	0730	Quincy Airport							
514	2	BELL 205++	Quincy	0800	0730	Quency Helibase							
510	2	Bell 205++	Chester	0800	0730								

MEDICAL PLAN (ICS 206 WF) CIIMT 12

1. Incident Name			2. Operational Period				
SKY FIRE INCIDENT			Date/Time: 06/29/2021 – 06/30/2021 (0600 – 0600) 24 hours				
3. EMS / Ambulance Services/Aid Stations							
Name	Location		Frequency/Phone		Advanced Life Support (ALS) Yes No		
BUTTE COUNTY EMS AMBULANCE	ALL DIVS		COMMAND		X		
ICP MEDICAL UNIT	ICP		CONTACT MEDL 805-813-3858		X		
4. Air Rescue / Air Ambulance Services							
Name	Phone		Type of Aircraft & Capability				
Cal Fire	Contact Command		Helicopter - ALS, Day Hoist Only (ETA 30 min)				
CHP	Contact Command		Helicopter – ALS, Day Hoist Only (ETA 30 min)				
Enloe Medical	Contact Command		Air Ambulance – ALS (ETA 15min)				
SEMSA Air	Contact Command		Air Ambulance – ALS (ETA 15 min)				
PHI Air Ambulance	Contact Command		Air Ambulance – ALS (ETA 15min)				
CARE Flight	Contact Command		Air Ambulance – ALS (ETA 15min)				
5. Hospitals (all times estimated from incident location)							
Name & Level	GPS Datum – WGS 84 Degrees Decimal Minutes		Travel Time Air Gnd		Phone	Helipad Yes No	Address
UC Davis Medical Center Level 1 Trauma/Burn	Lat:	N 38° 33.2917'	45 min	2.75 hrs	916-734-2011	X	2315 Stockton Blvd Sacramento, CA
	Long:	W 121° 27.3143'					
Mercy Medical Center Level 2 Trauma	Lat:	N 40° 34.33'	30 min	2.5 hrs	530-225-7200	X	2175 Rosaline Ave. Redding, CA
	Long:	W 122° 23.80'					
Enloe Medical Center Level 2	Lat:	N 39° 44.5239'	15 min	1.25 hrs	530-332-7300	X	1531 Esplanade Chico, CA
	Long:	W 121° 51.0249'					
Oroville Hospital Level 3	Lat:	N 39° 30.4088'	30 mins	1.5 hrs	530-533-8500	X	2767 Olive Hwy Oroville, CA
	Long:	W 121° 32.4797'					
6. Division / Crew Emergency Pre-Plan			<i>Update and discuss with assigned resources daily.</i>				
Fireline EMT / Medic's Division / Branch Location							
Air Hoist site location site: Lat: / Long: / Elevation:							
Helispot: Lat: / Long: / Elevation:							
7. Prepared By (Medical Unit Leader)		8. Date/Time		9. Reviewed By (Safety Officer)		10. Date/Time	
MEDL(t) Brandon Bennewate 805-813-3858		06/28/2021 1830 <i>ISI Brandon Bennewate</i>		SOF2 Paul Tompkins 619-889-7533		06/28/2021 1830 <i>ISI Paul Tompkins</i>	

MEDICAL PLAN (ICS 206 WF) CIIMT 12

Medical Incident Report

FOR A NON-EMERGENCY INCIDENT, WORK THROUGH CHAIN OF COMMAND TO REPORT AND TRANSPORT INJURED PERSONNEL AS NECESSARY.

FOR A MEDICAL EMERGENCY: IDENTIFY ON SCENE INCIDENT COMMANDER BY NAME AND POSITION AND ANNOUNCE TO INITIATE RESPONSE FROM IMT COMMUNICATIONS/DISPATCH.

Use the following items to communicate situation to communications/dispatch.

1. CONTACT COMMUNICATIONS / DISPATCH (Verify correct frequency prior to starting report)

Ex: "Communications, Div. Alpha. Stand-by for Emergency Traffic."

2. INCIDENT STATUS: Provide incident summary (including number of patients) and command structure.

Ex: "Communications, I have a Red priority patient, unconscious, struck by a falling tree. Requesting air ambulance to Forest Road 1 at (Lat./Long.) This will be the Trout Meadow Medical, IC is TFLD Jones. EMT Smith is providing medical care."

Severity of Emergency / Transport Priority	<input type="checkbox"/> RED / PRIORITY 1 Life or limb threatening injury or illness. Evacuation need is IMMEDIATE <i>Ex: Unconscious, difficulty breathing, bleeding severely, 2^o - 3^o burns more than 4 palm sizes, heat stroke, disoriented.</i> <input type="checkbox"/> YELLOW / PRIORITY 2 Serious injury or illness. Evacuation may be DELAYED if necessary. <i>Ex: Significant trauma, unable to walk, 2^o - 3^o burns not more than 1-3 palm sizes.</i> <input type="checkbox"/> GREEN / PRIORITY 3 Minor injury or illness. Non-Emergency transport <i>Ex: Sprains, strains, minor heat-related illness.</i>	
Nature of Injury or Illness & Mechanism of Injury		Brief Summary of Injury or Illness <i>(Ex: Unconscious, Struck by Falling Tree)</i>
Transport Request		Air Ambulance / Short Haul/Hoist Ground Ambulance / Other
Patient Location		Descriptive Location & Lat. / Long. <i>(WGS84)</i>
Incident Name		Geographic Name + "Medical" <i>(Ex: Trout Meadow Medical)</i>
On-Scene Incident Commander		Name of on-scene IC of Incident within an Incident <i>(Ex: TFLD Jones)</i>
Patient Care		Name of Care Provider <i>(Ex: EMT Smith)</i>

3. INITIAL PATIENT ASSESSMENT: Complete this section for each patient as applicable (start with the most severe patient)

Patient Assessment: See IRPG PAGE 106

Treatment:

4. TRANSPORT PLAN:

Evacuation Location *(if different): (Descriptive Location (drop point, intersection, etc.) or Lat. / Long.)* Patient's ETA to Evacuation Location:

Helispot / Extraction Site Size and Hazards:

5. ADDITIONAL RESOURCES / EQUIPMENT NEEDS:

Example: Paramedic/EMT, Crews, Immobilization Devices, AED, Oxygen, Trauma Bag, IV/Fluid(s), Splints, Rope rescue, Wheeled litter, HAZMAT, Extrication :

6. COMMUNICATIONS: Identify State Air/Ground EMS Frequencies and Hospital Contacts as applicable

Function	Channel Name/Number	Receive (RX)	Tone/NAC *	Transmit (TX)	Tone/NAC *
COMMAND					
AIR-TO-GRND					
TACTICAL					

7. CONTINGENCY: Considerations: If primary options fail, what actions can be implemented in conjunction with primary evacuation method? Be thinking ahead. .

8. ADDITIONAL INFORMATION: Updates/Changes, etc. .

REMEMBER: Confirm ETA's of resources ordered. Act according to your level of training. Be Alert. Keep Calm. Think Clearly. Act Decisively. .



Finance Message

Finance can begin collect CTR's in hard copy for now. We will need all of them from the beginning of the fire, so please get them started. and will need all of them. Please keep up our time.

We will be setup with an email to collect electronic submission of CTRs, Shift ticket, contract, crew manifest, and resource orders soon and will share that email address as soon as we have it.

We will accept:

- Photo/image of the traditional hardcopy w/wet signature, or
- PDF w/electronic signature

But... they must be signed by supervisors.

Thank you!

Fire and COVID-19 Briefing Checklist

Self-Awareness / Screening

- Notify supervisor if you or others experience:
 - Cough, more than expected
 - Difficulty breathing
 - Loss of taste or smell
 - Fever
 - Chills
 - Sore throat
 - Muscle pain
- Immediately separate yourself from others.
- Follow crew and division plans to isolate, triage, and transport symptomatic personnel.

Hygiene on the Fireline

- Properly wash or sanitize your hands often
- Avoid handshakes and communal use items
- Inform supervisor of needed resupply.
- Disinfect high touch surfaces often

Social distancing and protective equipment

- Practice social distancing
- Conduct briefings in conversations outdoors and at least SIX feet apart
- Utilize face coverings if not **FULLY** vaccinated
- Clean or replace dirty face coverings, equipment, and PPE

Communications

- Ensure effective sender/receiver messaging.
- Protect yourself, your crew, and your camp!

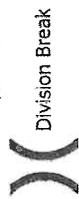
Any questions or concerns contact:

MEDL (T) Brandon Bennewate @ (925-872-8539)

IAP
SKY

CA-LNF-003531

6/29/21



Division Break

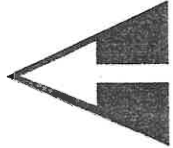
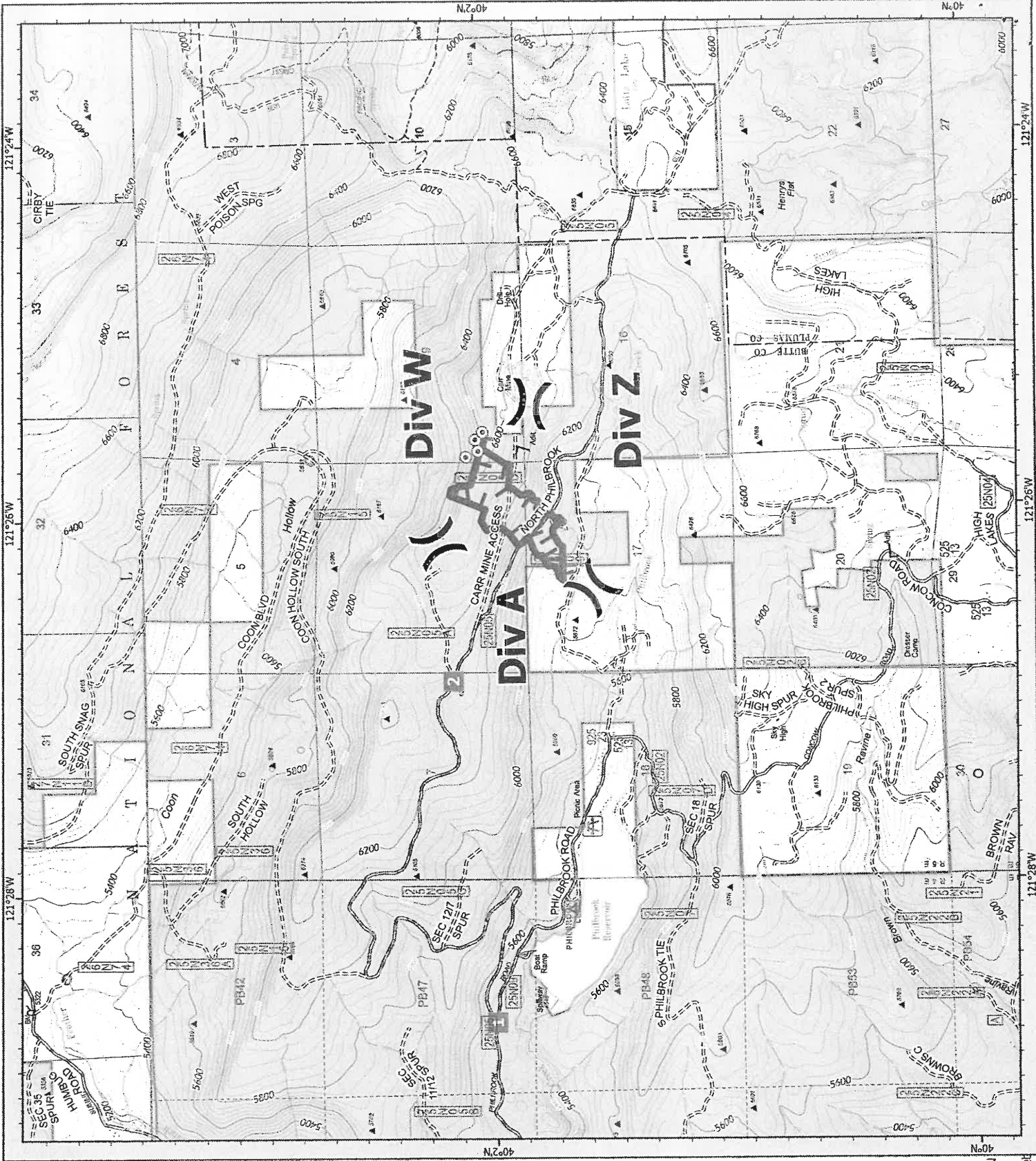
Drop Point

Hot Spot - Spot Fire

Fire Edge

NON-FS

USDA FOREST SERVICE



1:37,000 NAD83 UTM 12N
4,000 Feet
Prepared by CALMTR 6/29/2021 1:05

Transportation
SKY
 CA-LNF-003531
 6/29/21



- Incident Command Post
- Drop Point
- Wildfire Daily Fire Perimeter
- Road - Light Duty - Dirt
- Road - Light Duty - Paved
- Road - Light Duty - Gravel

- Directions to DP-1**
- Turn right onto Mulberry St
 - Turn right onto E 9th St/CA-32 E
 - Turn right onto Humboldt Rd
 - Turn right onto Skyway
 - Turn right onto Philbrook Rd
- Directions to DP-2**
- Turn right onto Mulberry St
 - Turn right onto E 9th St/CA-32 E
 - Turn right onto Humboldt Rd
 - Turn right onto Skyway
 - Turn right onto Philbrook Rd
 - Turn left onto North Philbrook Rd

