



Route Map
Beckworth Complex
 CA-198-1084
 07/11/2021
 Produced by Brandon C. Lewis

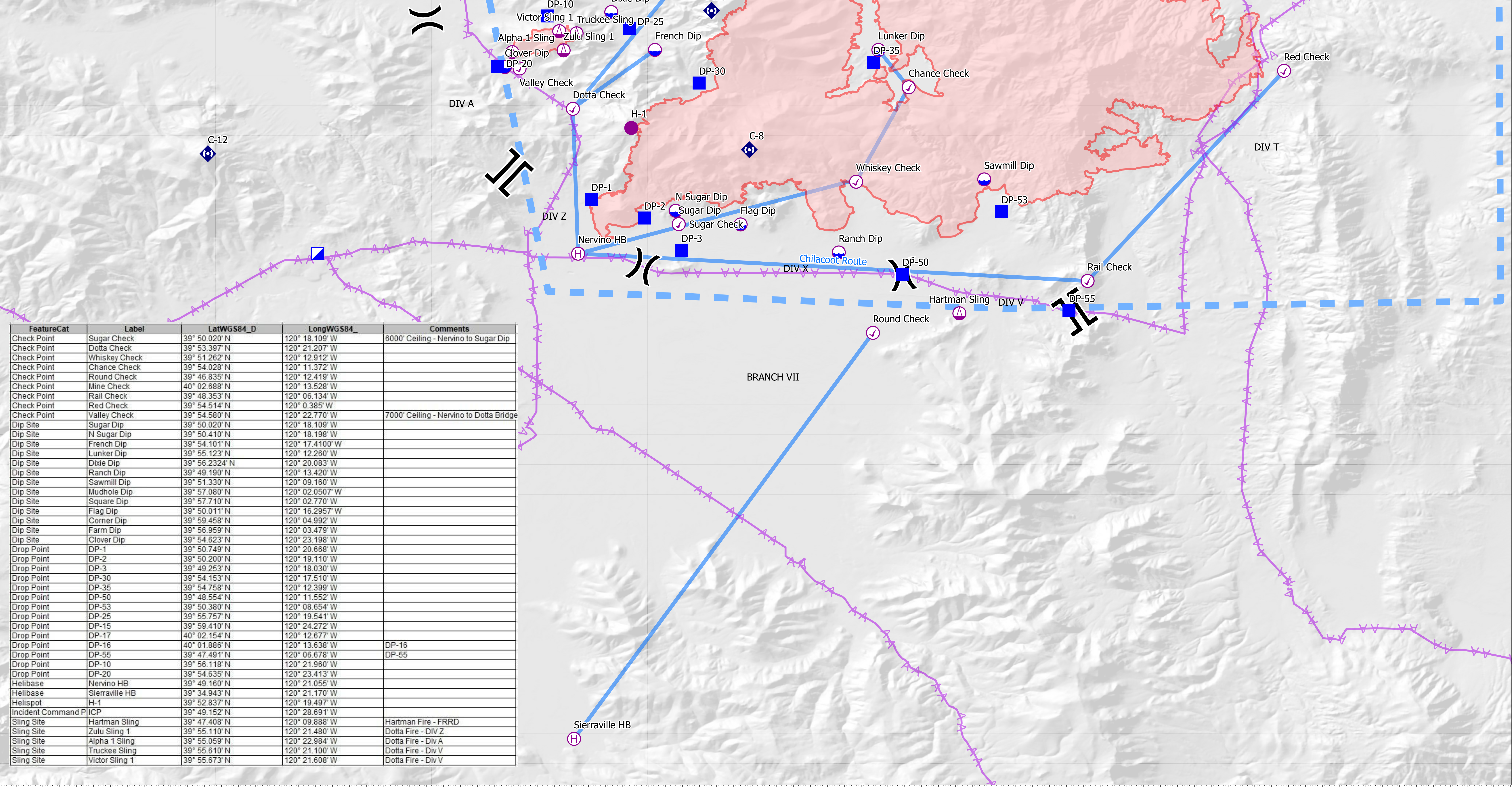


0 1 2 Miles

— Helicopter Routes
 — Transmission Line
 — Branch Break
 — Check Point
 — Dip Site
 — Division Break
 — Drop Point
 — Helispot
 — Incident Command Post
 — Repeater
 — Sling Site
 — Helibase
 — Fire Perimeter
 254
 0
 — TFR



Author Name: Brandon C. Lewis
 Date: 07/11/2021
 Source: IR and GPS
 WGS 1984 Datum, NAD83



FeatureCat	Label	LatWGS84_D	LongWGS84_D	Comments
Check Point	Sugar Check	39° 50.020' N	120° 18.109' W	6000' Ceiling - Nervino to Sugar Dip
Check Point	Dotta Check	39° 53.397' N	120° 21.207' W	
Check Point	Whiskey Check	39° 51.262' N	120° 12.912' W	
Check Point	Chance Check	39° 54.028' N	120° 11.372' W	
Check Point	Round Check	39° 46.835' N	120° 12.419' W	
Check Point	Mine Check	40° 02.688' N	120° 13.528' W	
Check Point	Rail Check	39° 48.353' N	120° 06.134' W	
Check Point	Red Check	39° 54.514' N	120° 0.385' W	
Check Point	Valley Check	39° 54.580' N	120° 22.770' W	7000' Ceiling - Nervino to Dotta Bridge
Dip Site	Sugar Dip	39° 50.020' N	120° 18.109' W	
Dip Site	N Sugar Dip	39° 50.410' N	120° 18.198' W	
Dip Site	French Dip	39° 54.101' N	120° 17.4100' W	
Dip Site	Lunker Dip	39° 55.123' N	120° 12.260' W	
Dip Site	Dixie Dip	39° 56.2324' N	120° 20.083' W	
Dip Site	Ranch Dip	39° 49.190' N	120° 13.420' W	
Dip Site	Sawmill Dip	39° 51.330' N	120° 09.160' W	
Dip Site	Mudhole Dip	39° 57.080' N	120° 02.0507' W	
Dip Site	Square Dip	39° 57.710' N	120° 02.770' W	
Dip Site	Flag Dip	39° 50.011' N	120° 16.2957' W	
Dip Site	Corner Dip	39° 59.458' N	120° 04.992' W	
Dip Site	Farm Dip	39° 56.959' N	120° 03.479' W	
Dip Site	Clover Dip	39° 54.623' N	120° 23.198' W	
Drop Point	DP-1	39° 50.749' N	120° 20.668' W	
Drop Point	DP-2	39° 50.200' N	120° 19.110' W	
Drop Point	DP-3	39° 49.253' N	120° 18.030' W	
Drop Point	DP-30	39° 54.153' N	120° 17.510' W	
Drop Point	DP-35	39° 54.758' N	120° 12.399' W	
Drop Point	DP-50	39° 48.554' N	120° 11.552' W	
Drop Point	DP-53	39° 50.380' N	120° 08.654' W	
Drop Point	DP-25	39° 55.757' N	120° 19.541' W	
Drop Point	DP-15	39° 59.410' N	120° 24.272' W	
Drop Point	DP-17	40° 02.154' N	120° 12.677' W	
Drop Point	DP-16	40° 01.886' N	120° 13.638' W	DP-16
Drop Point	DP-55	39° 47.491' N	120° 06.678' W	DP-55
Drop Point	DP-10	39° 56.118' N	120° 21.960' W	
Drop Point	DP-20	39° 54.635' N	120° 23.413' W	
Helibase	Nervino HB	39° 49.160' N	120° 21.055' W	
Helibase	Sierraville HB	39° 34.943' N	120° 21.170' W	
Helispot	H-1	39° 52.837' N	120° 19.497' W	
Incident Command Post	ICP	39° 49.152' N	120° 28.991' W	
Sling Site	Hartman Sling	39° 47.408' N	120° 09.888' W	Hartman Fire - FRRD
Sling Site	Zulu Sling 1	39° 55.110' N	120° 21.480' W	Dotta Fire - Div Z
Sling Site	Alpha 1 Sling	39° 55.059' N	120° 22.984' W	Dotta Fire - Div A
Sling Site	Truckee Sling	39° 55.610' N	120° 21.100' W	Dotta Fire - Div V
Sling Site	Victor Sling 1	39° 55.673' N	120° 21.608' W	Dotta Fire - Div V