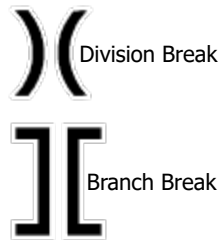


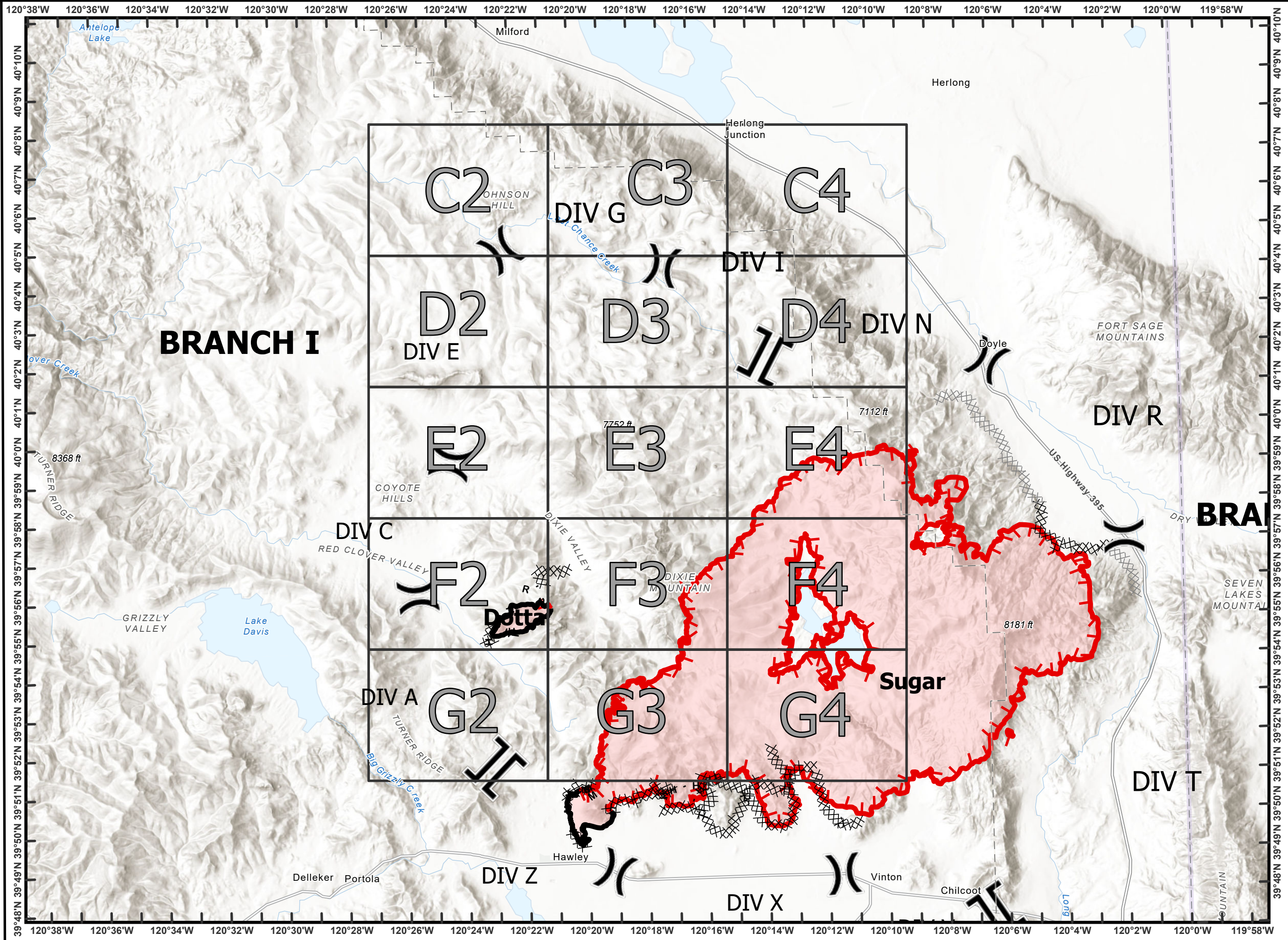
Beckwourth Complex
CA-PNF-001064
NAD83, Zone 10
IAP Index
07/11/2021
Day Shift
Branch I



- ⊗ Completed Dozer Line
- H Completed Hand Line
- M Completed Mixed Construction Line
- R Completed Road as Line
- ⊗ Planned Dozer Line
- ▬ Fire Edge
- ▬ Contained Line

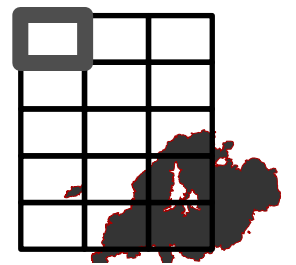


0 1.75 3.5
 Miles

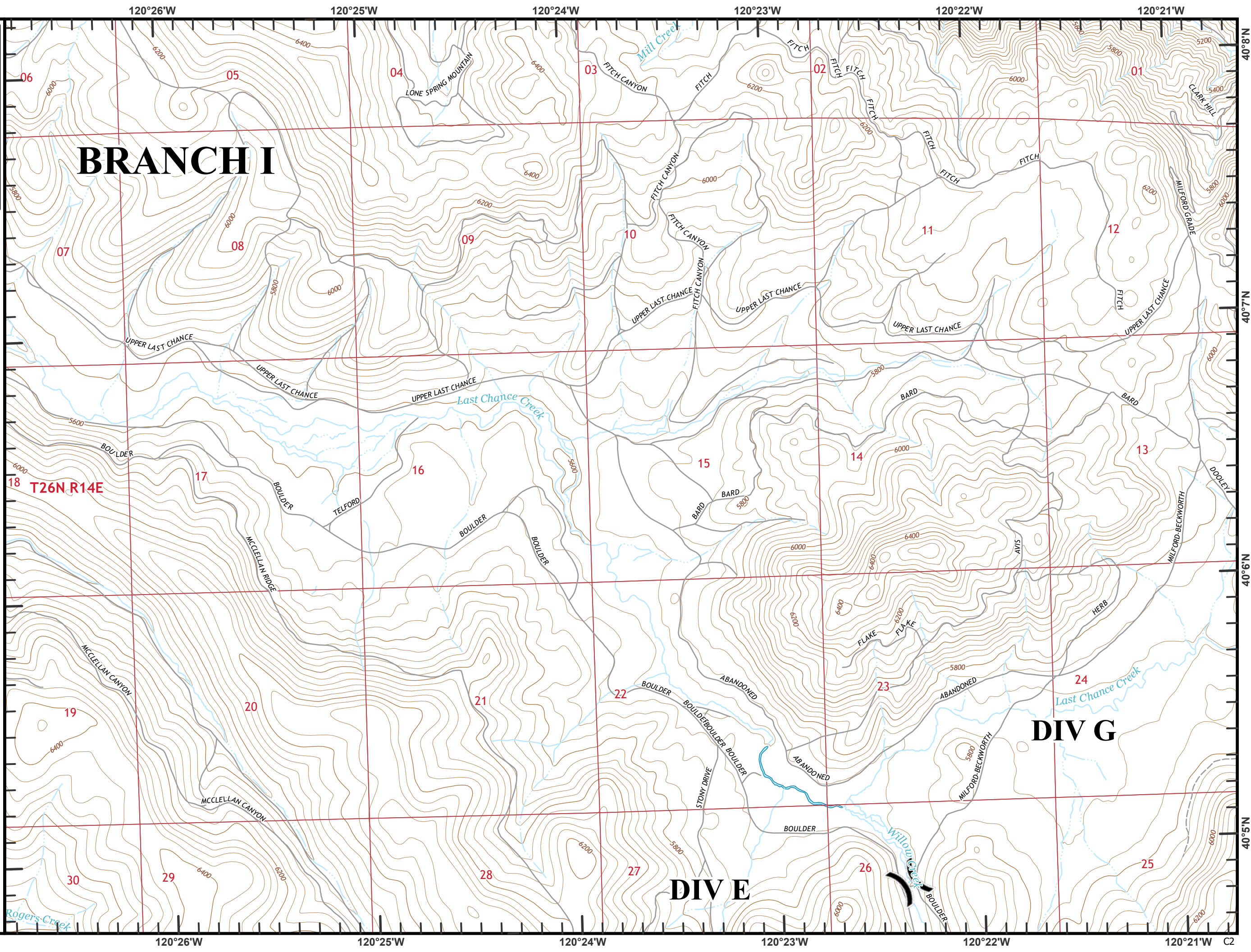


Beckworth Complex
CA-PNF-001064
NAD83, Zone 10
IAP Tiles
07/11/2021
Day Shift
Branch I
Index Grid
C2

 Division Break



0 1/4 1/2
Miles



BRANCH I

18 T26N R14E

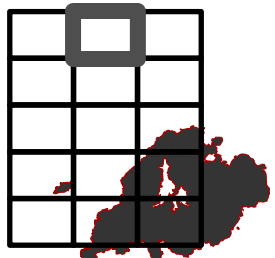
DIV G

DIV E

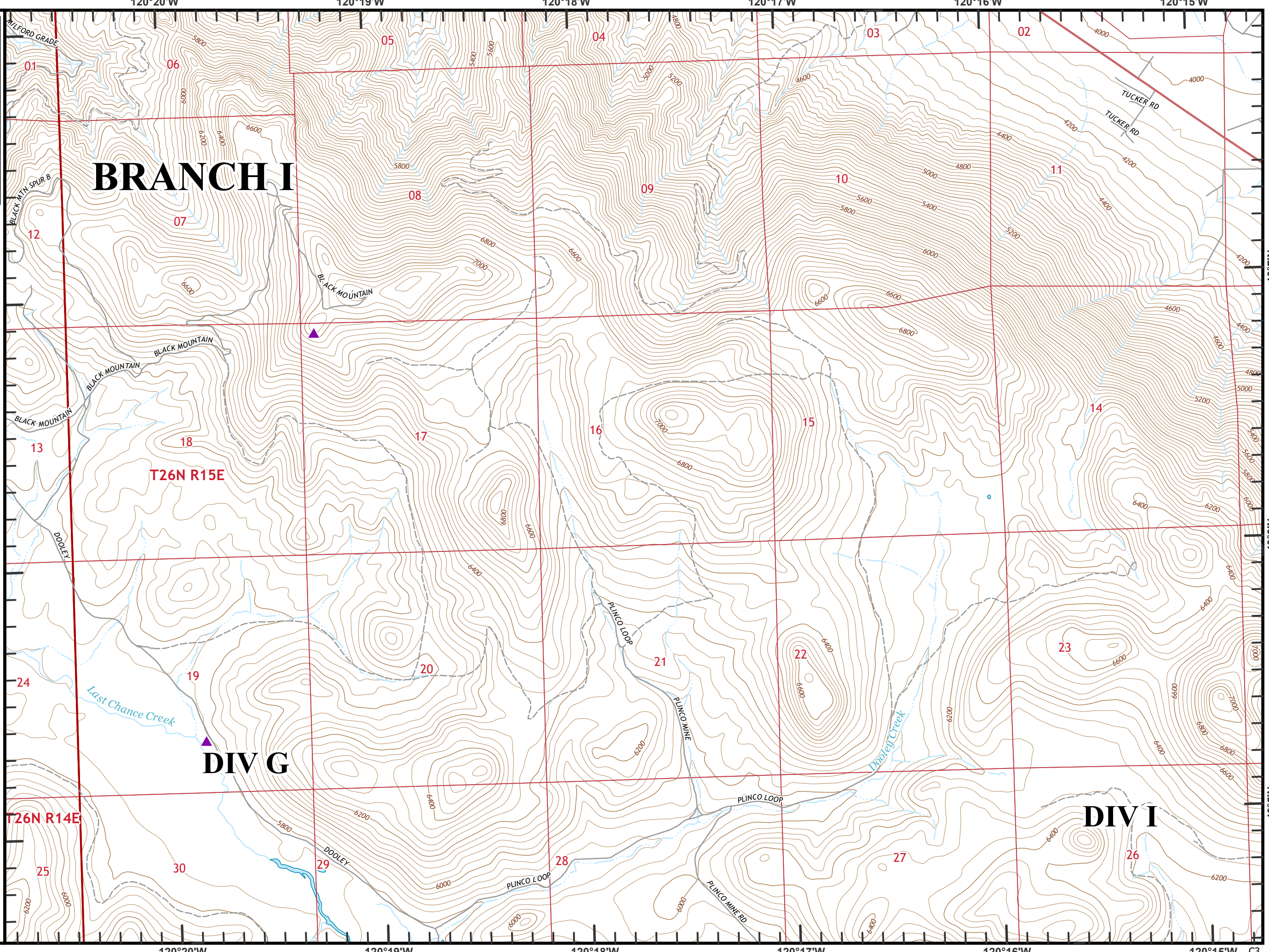
C2

Beckworth Complex
CA-PNF-001064
NAD83, Zone 10
IAP Tiles
07/11/2021
Day Shift
Branch I
Index Grid
C3

▲ Sensitive Areas



0 1/4 1/2
Miles



BRANCH I

T26N R15E

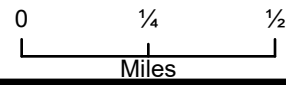
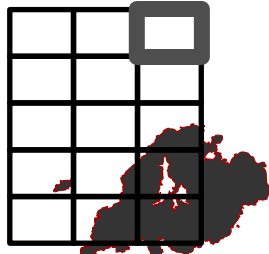
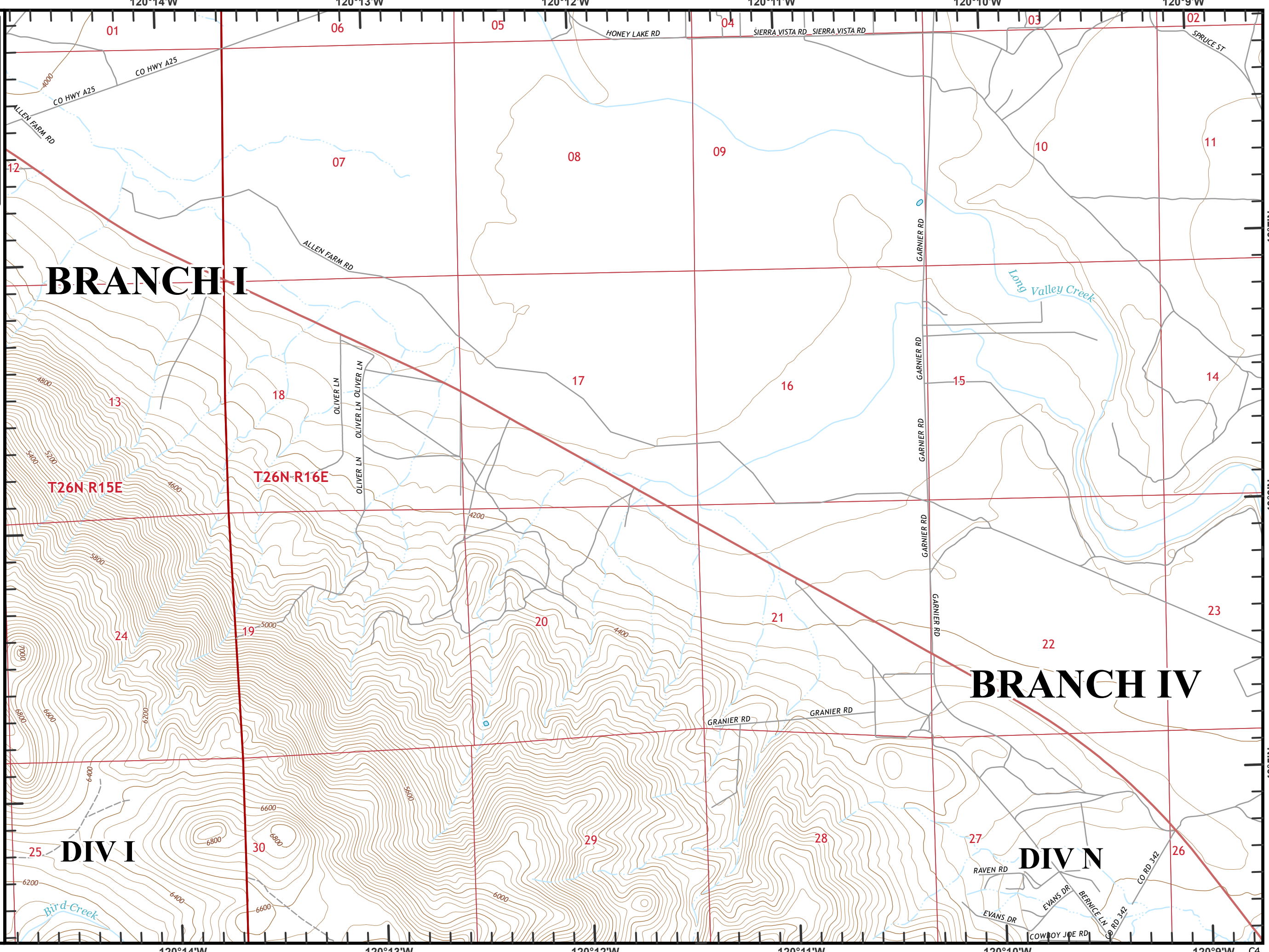
DIV G

DIV I

120°20'W 120°19'W 120°18'W 120°17'W 120°16'W 120°15'W C3

40°7'N 40°6'N 40°5'N

Beckworth Complex
CA-PNF-001064
NAD83, Zone 10
IAP Tiles
07/11/2021
Day Shift
Branch I
Index Grid
C4



BRANCH I

BRANCH IV

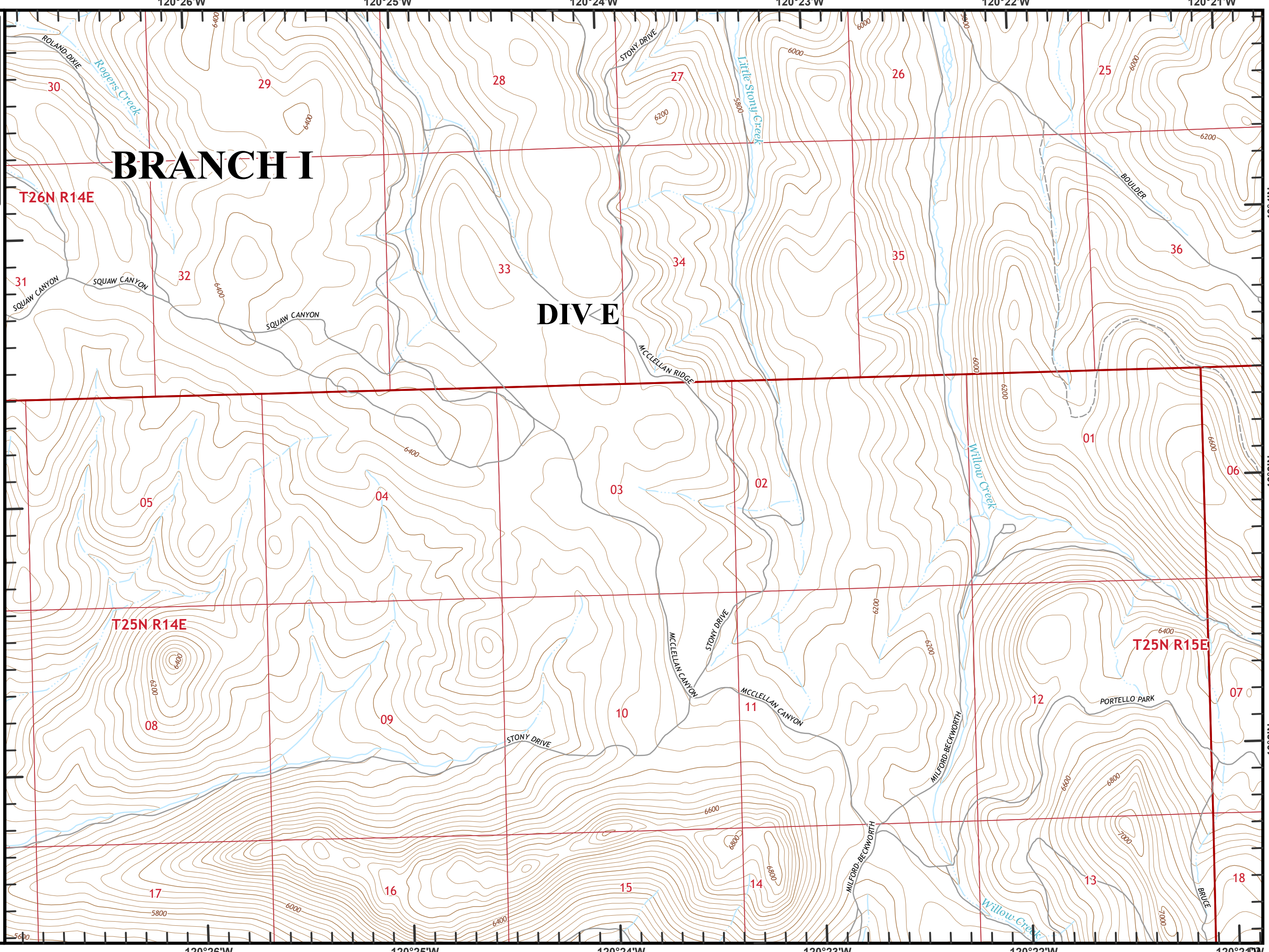
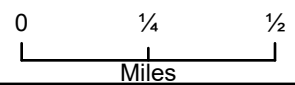
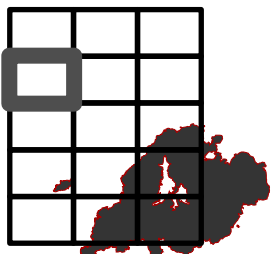
DIV I

DIV N



T26N-R15E

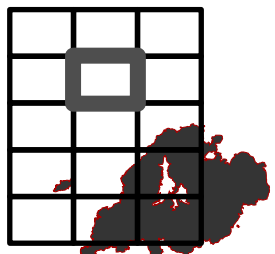
T26N-R16E

Beckworth Complex
CA-PNF-001064
NAD83, Zone 10
IAP Tiles
07/11/2021
Day Shift
Branch I
Index Grid
D2

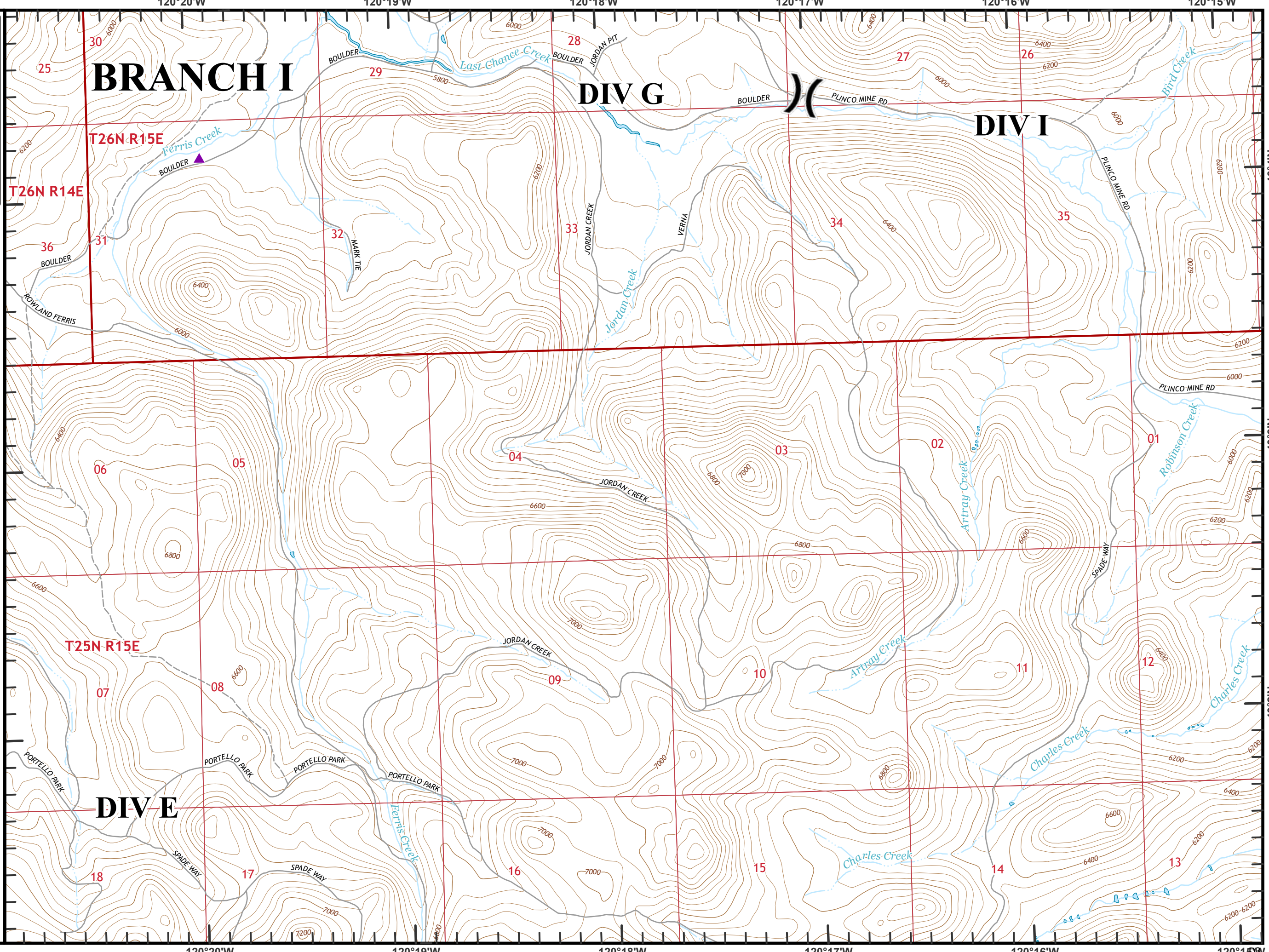


Beckworth Complex
CA-PNF-001064
NAD83, Zone 10
IAP Tiles
07/11/2021
Day Shift
Branch I
Index Grid
D3




 Division Break
 Sensitive Areas

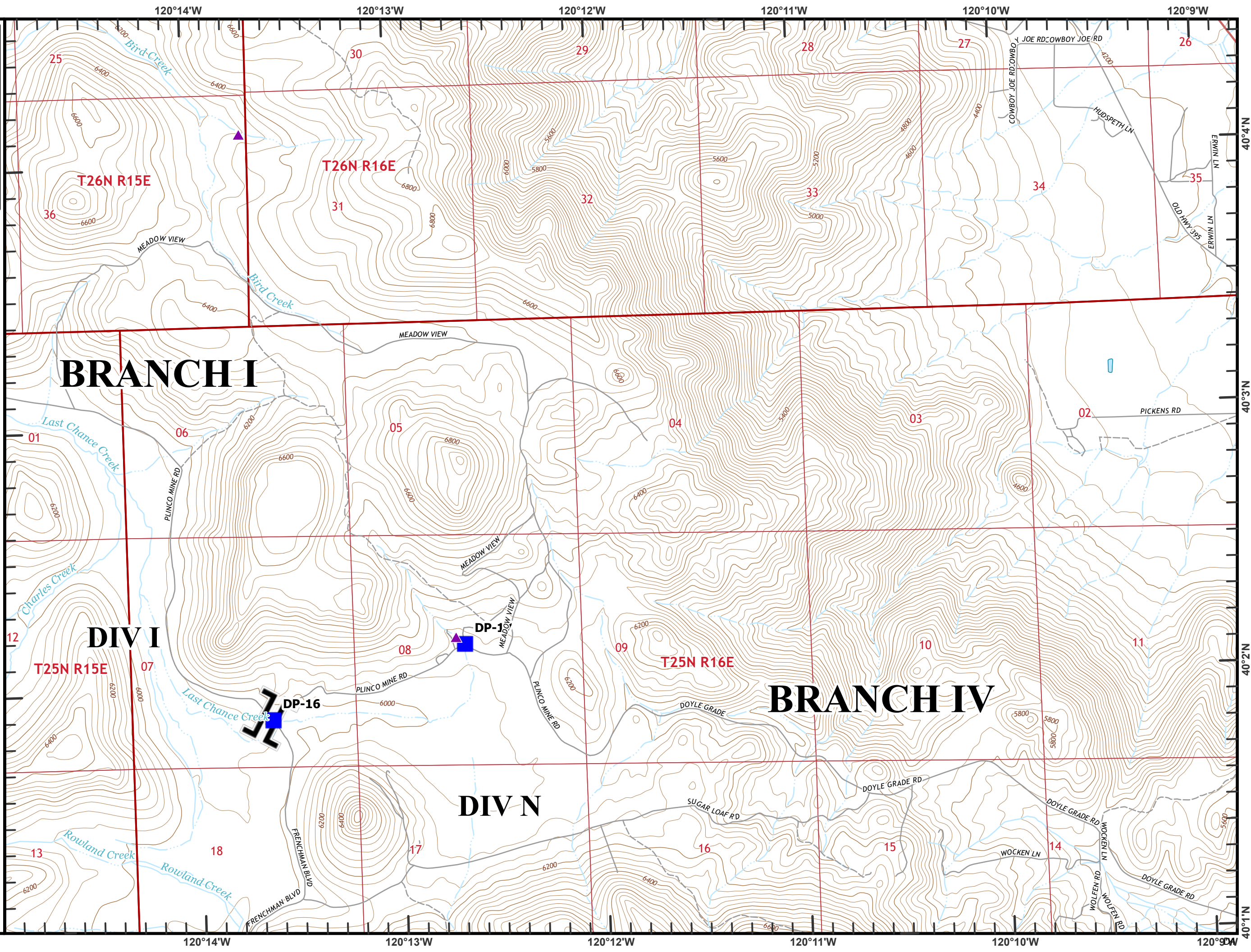
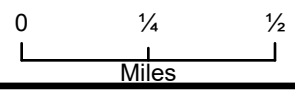
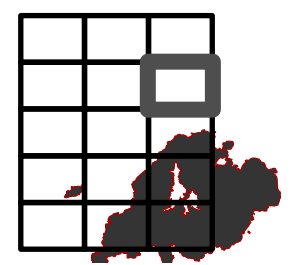


0 1/4 1/2
Miles





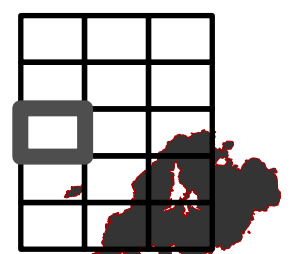
Beckworth Complex
CA-PNF-001064
NAD83, Zone 10
IAP Tiles
07/11/2021
Day Shift
Branch I
Index Grid
D4

-  Branch Break
-  Drop Point
-  Sensitive Areas

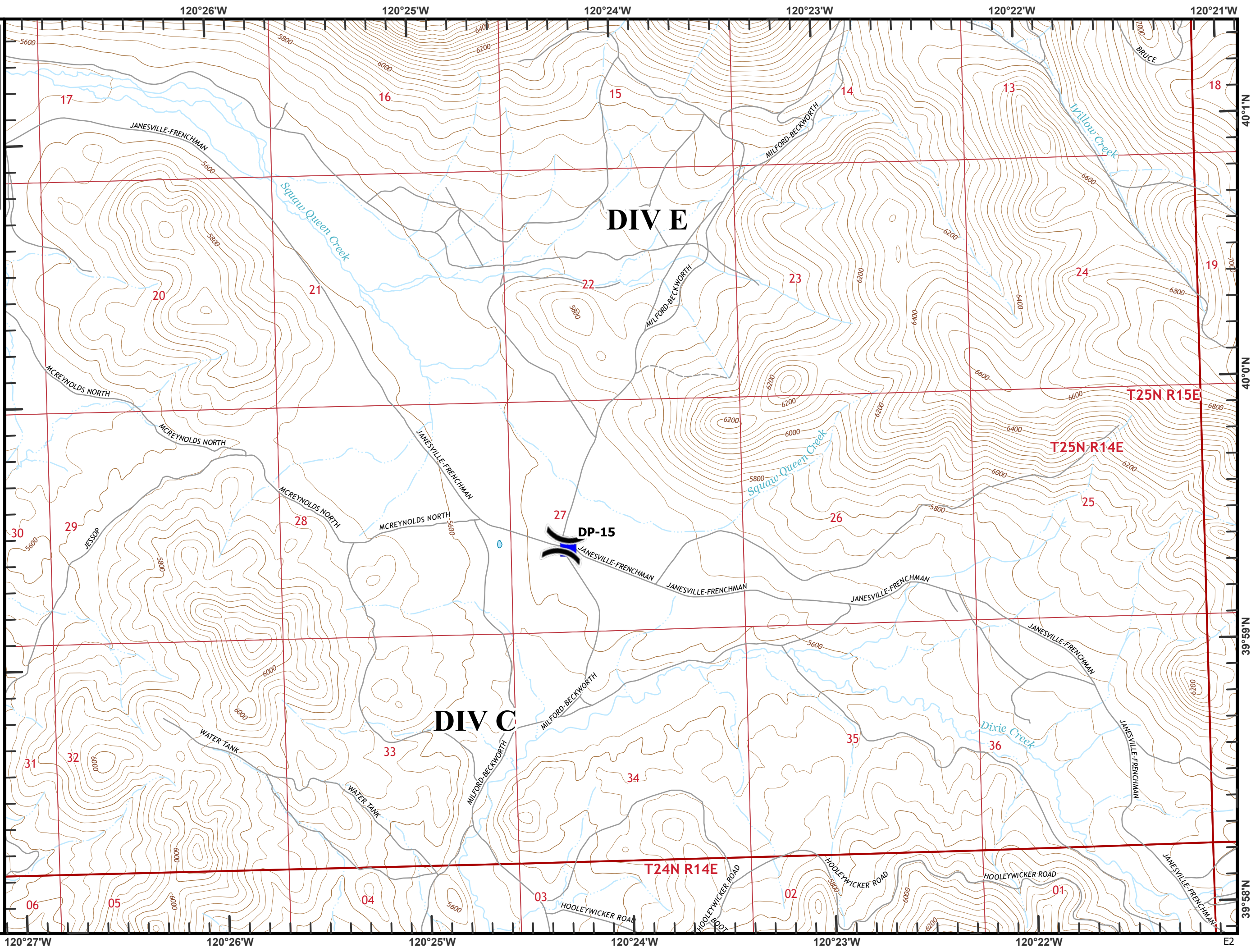


Beckworth Complex
CA-PNF-001064
NAD83, Zone 10
IAP Tiles
07/11/2021
Day Shift
Branch I
Index Grid
E2

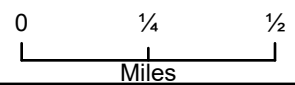
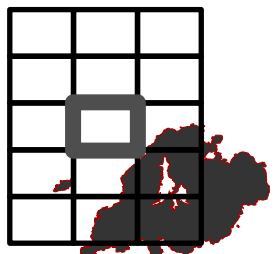
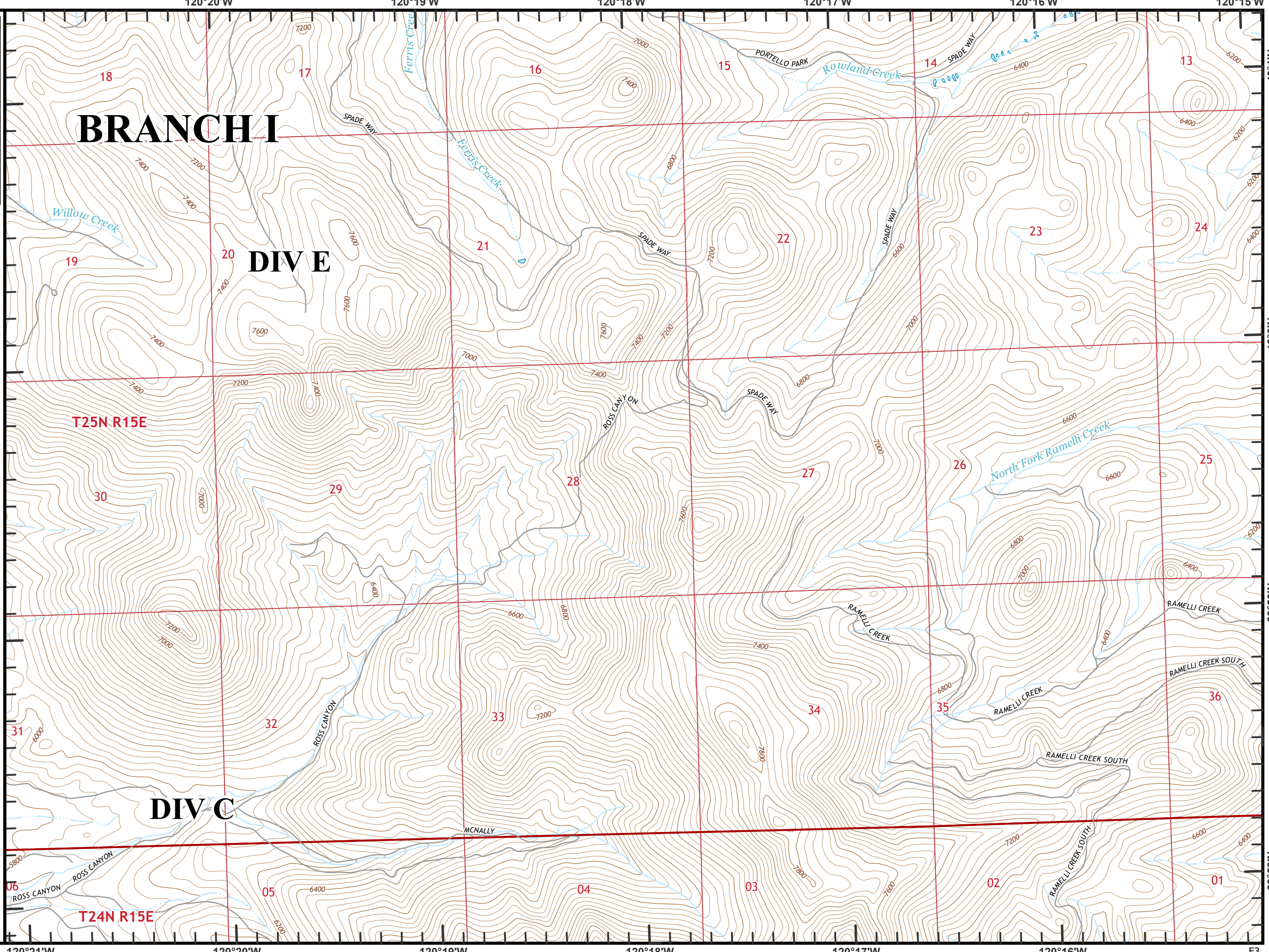
 Division Break
 Drop Point



0 1/4 1/2
Miles



Beckworth Complex
CA-PNF-001064
NAD83, Zone 10
IAP Tiles
07/11/2021
Day Shift
Branch I
Index Grid
E3



120°21'W 120°20'W 120°19'W 120°18'W 120°17'W 120°16'W E3

120°20'W 120°19'W 120°18'W 120°17'W 120°16'W 120°15'W

T24N R15E

T25N R15E

BRANCH I

DIV E

DIV C

06

05

04

03

02

01

18

17

16

15

14

19

20

21

22

23

24

T25N R15E

30

29

28

27

26

25

31

32

33

34

35

36

06

05

04

03

02

01

120°21'W

120°20'W

120°19'W

120°18'W

120°17'W

120°16'W

E3

120°20'W

120°19'W

120°18'W

120°17'W

120°16'W

120°15'W

40°0'N

40°0'N

39°59'N

39°59'N

39°58'N

39°58'N

120°20'W

120°19'W

120°18'W

120°17'W

120°16'W

120°15'W

120°20'W

120°19'W

120°18'W

120°17'W

120°16'W

120°15'W

120°20'W

120°19'W

120°18'W

120°17'W

120°16'W

120°15'W

120°20'W

120°19'W

120°18'W

120°17'W

120°16'W

120°15'W

120°20'W

120°19'W

120°18'W

120°17'W

120°16'W

120°15'W

120°20'W

120°19'W

120°18'W

120°17'W

120°16'W

120°15'W

120°20'W

120°19'W

120°18'W

120°17'W

120°16'W

120°15'W

120°20'W

120°19'W

120°18'W

120°17'W

120°16'W

120°15'W

120°20'W

120°19'W

120°18'W

120°17'W

120°16'W

120°15'W

120°20'W

120°19'W

120°18'W

120°17'W

120°16'W

120°15'W

120°20'W

120°19'W

120°18'W

120°17'W

120°16'W

120°15'W

120°20'W

120°19'W

120°18'W

120°17'W

120°16'W

120°15'W

120°20'W

120°19'W

120°18'W

120°17'W

120°16'W

120°15'W

120°20'W

120°19'W

120°18'W

120°17'W

120°16'W

120°15'W

120°20'W

120°19'W

120°18'W

120°17'W

120°16'W

120°15'W

120°20'W

120°19'W

120°18'W

120°17'W

120°16'W

120°15'W

120°20'W

120°19'W

120°18'W

120°17'W

120°16'W

120°15'W

120°20'W

120°19'W

120°18'W

120°17'W

120°16'W

120°15'W

120°20'W

120°19'W

120°18'W

120°17'W

120°16'W

120°15'W

120°20'W

120°19'W

120°18'W

120°17'W

120°16'W

120°15'W

120°20'W

120°19'W

120°18'W

120°17'W

120°16'W

120°15'W

120°20'W

120°19'W

120°18'W

120°17'W

120°16'W

120°15'W

120°20'W

120°19'W

120°18'W

120°17'W

120°16'W

120°15'W

120°20'W

120°19'W

120°18'W

120°17'W

120°16'W

120°15'W

120°20'W

120°19'W

120°18'W

120°17'W

120°16'W

120°15'W

120°20'W

120°19'W

120°18'W

120°17'W

120°16'W

120°15'W

120°20'W

120°19'W

120°18'W

120°17'W

120°16'W

120°15'W

120°20'W

120°19'W

120°18'W

120°17'W

120°16'W

120°15'W

120°20'W

120°19'W

120°18'W

120°17'W

120°16'W

120°15'W

120°20'W

120°19'W

120°18'W

120°17'W

120°16'W

120°15'W

120°20'W

120°19'W

120°18'W

120°17'W

120°16'W

120°15'W

120°20'W

120°19'W

120°18'W

120°17'W

120°16'W

120°15'W

120°20'W

120°19'W

120°18'W

120°17'W

120°16'W

120°15'W

120°20'W

120°19'W

120°18'W

120°17'W

120°16'W

120°15'W

120°20'W

120°19'W

120°18'W

120°17'W

120°16'W

120°15'W

120°20'W

120°19'W

120°18'W

120°17'W

120°16'W

120°15'W

120°20'W

120°19'W

120°18'W

120°17'W

120°16'W

120°15'W

120°20'W

120°19'W

120°18'W

120°17'W

120°16'W

120°15'W

120°20'W

120°19'W

120°18'W

120°17'W

120°16'W

120°15'W

120°20'W

120°19'W

120°18'W

120°17'W

120°16'W

120°15'W

120°20'W

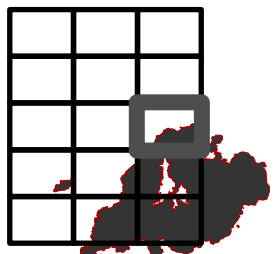
120°19'W

120°18'W

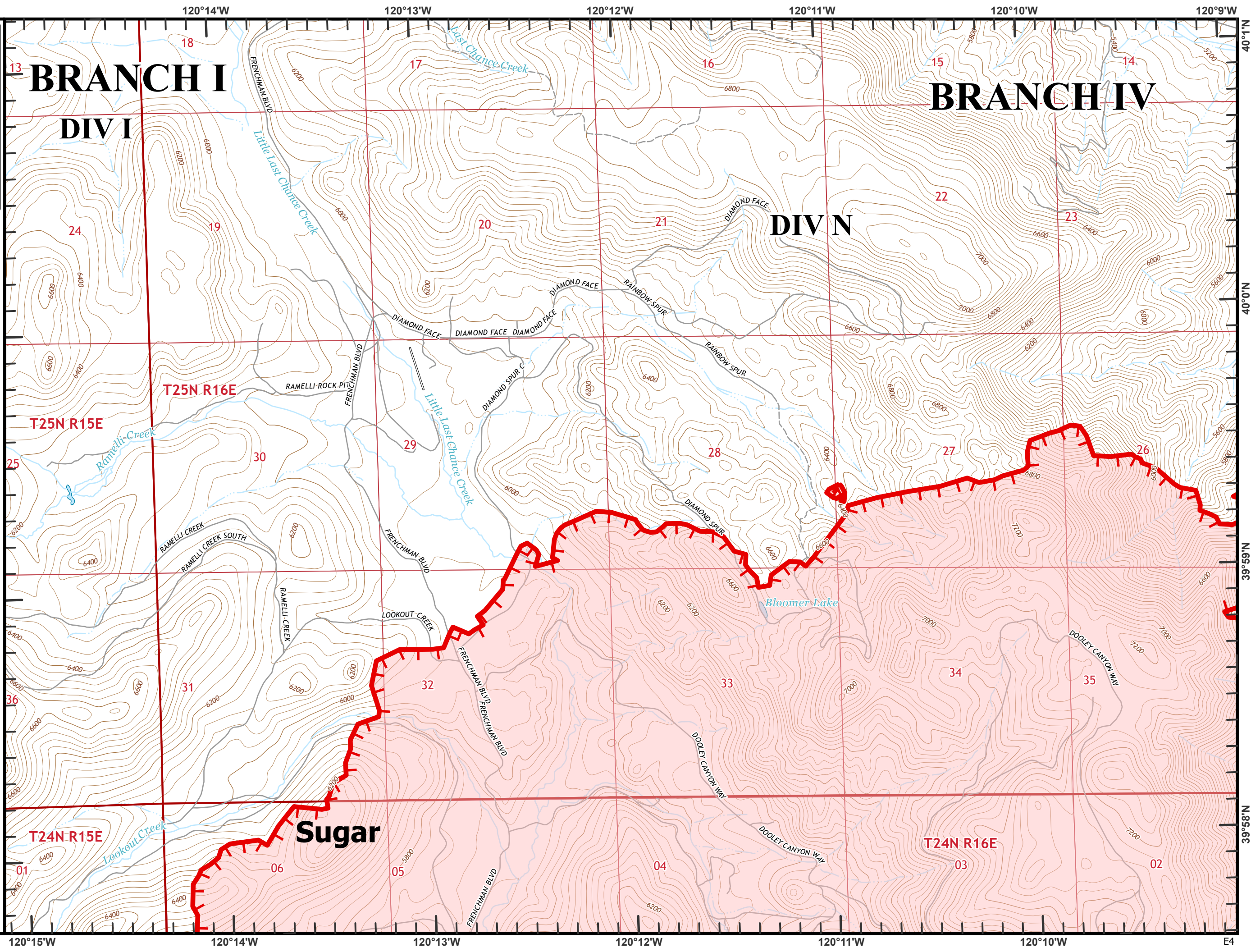
1

Beckworth Complex
CA-PNF-001064
NAD83, Zone 10
IAP Tiles
07/11/2021
Day Shift
Branch I
Index Grid
E4

 Fire Edge

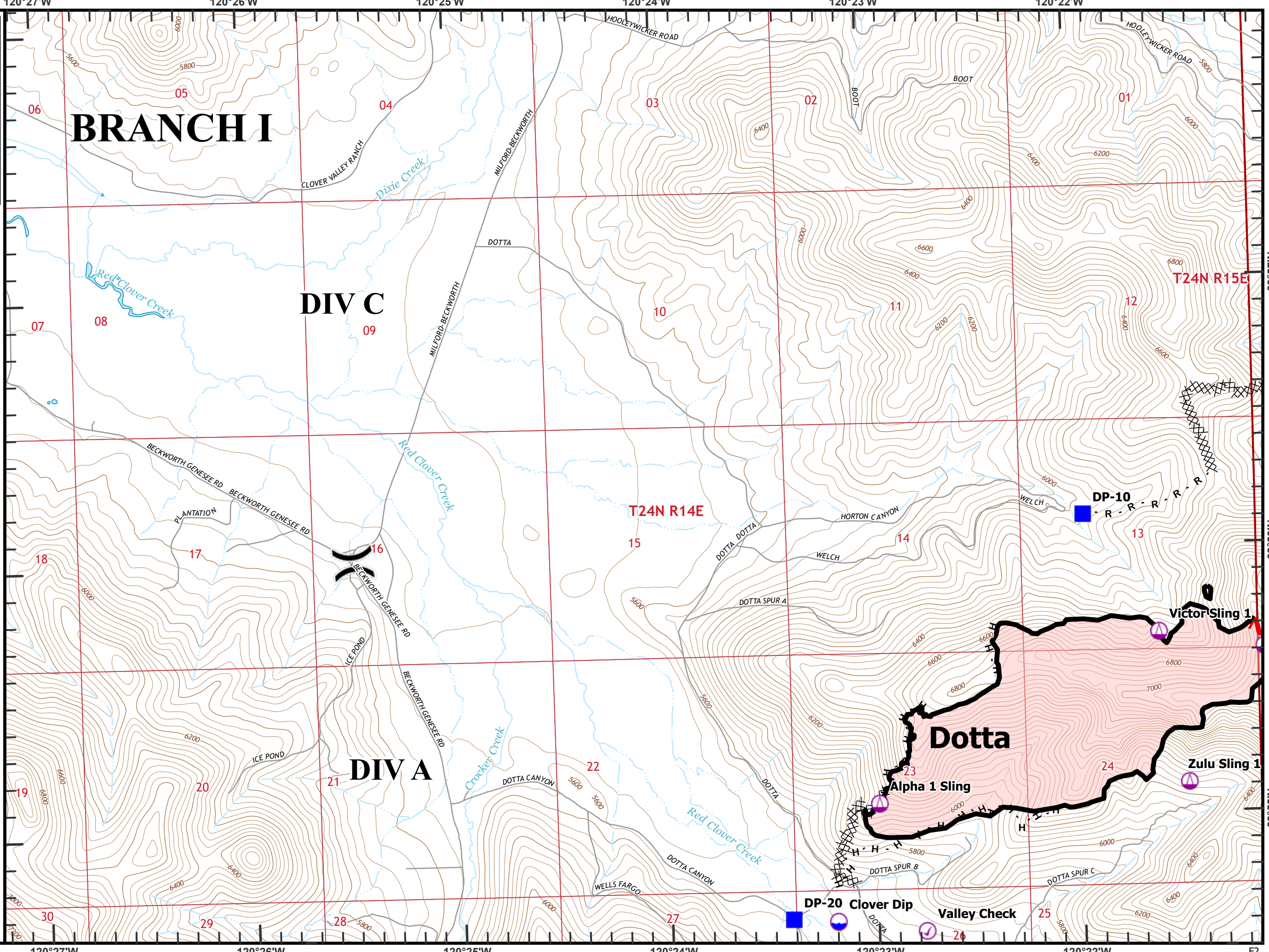
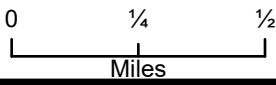
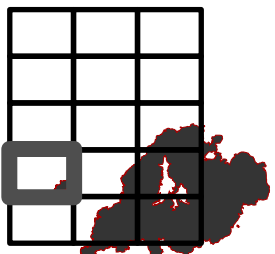


0 1/4 1/2
Miles



Beckworth Complex
CA-PNF-001064
NAD83, Zone 10
IAP Tiles
07/11/2021
Day Shift
Branch I
Index Grid
F2

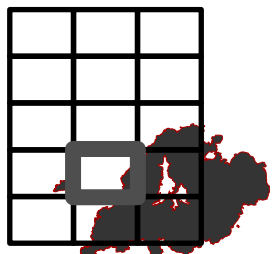
- ⊗ Completed Dozer Line
- H Completed Hand Line
- R Completed Road as Line
-) Division Break
- 📍 Check Point
- 📍 Dip Site
- 📍 Sling Site
- 📍 Drop Point
- 🔴 Fire Edge
- ▬ Contained Line



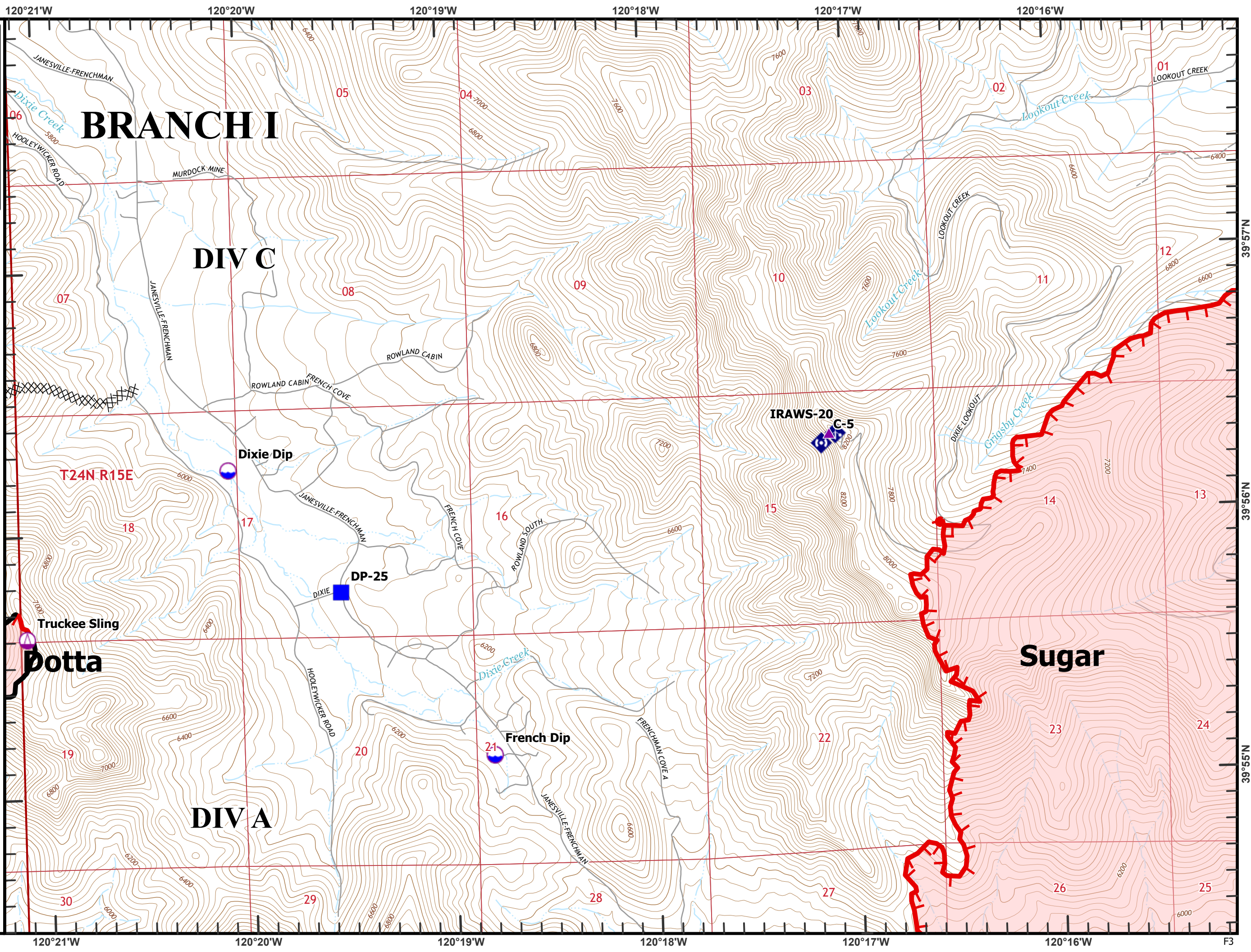
39°57'N
39°56'N
39°55'N
F2

Beckworth Complex
 CA-PNF-001064
 NAD83, Zone 10
 IAP Tiles
 07/11/2021
 Day Shift
 Branch I
 Index Grid
 F3



- ⊗ Completed Dozer Line
- 📍 Dip Site
- 📍 Sling Site
- 📍 Drop Point
- 📍 Mobile Weather Unit
- 📍 Repeater
- 🔴 Fire Edge
- ▬ Contained Line
- ▲ Sensitive Areas

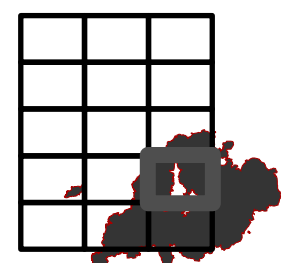


0 1/4 1/2
 Miles

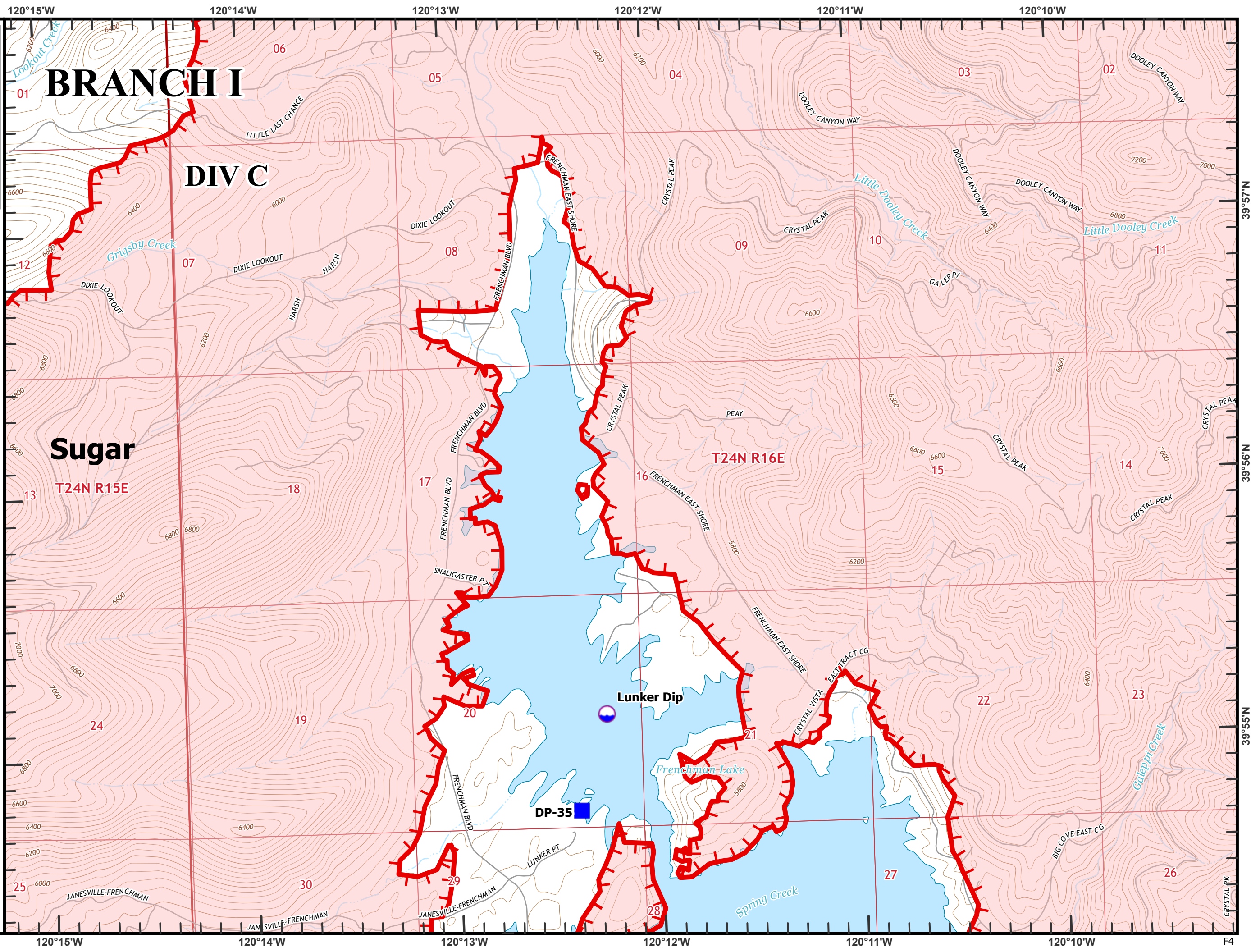


Beckworth Complex
CA-PNF-001064
NAD83, Zone 10
IAP Tiles
07/11/2021
Day Shift
Branch I
Index Grid
F4

-  Dip Site
-  Drop Point
-  Fire Edge

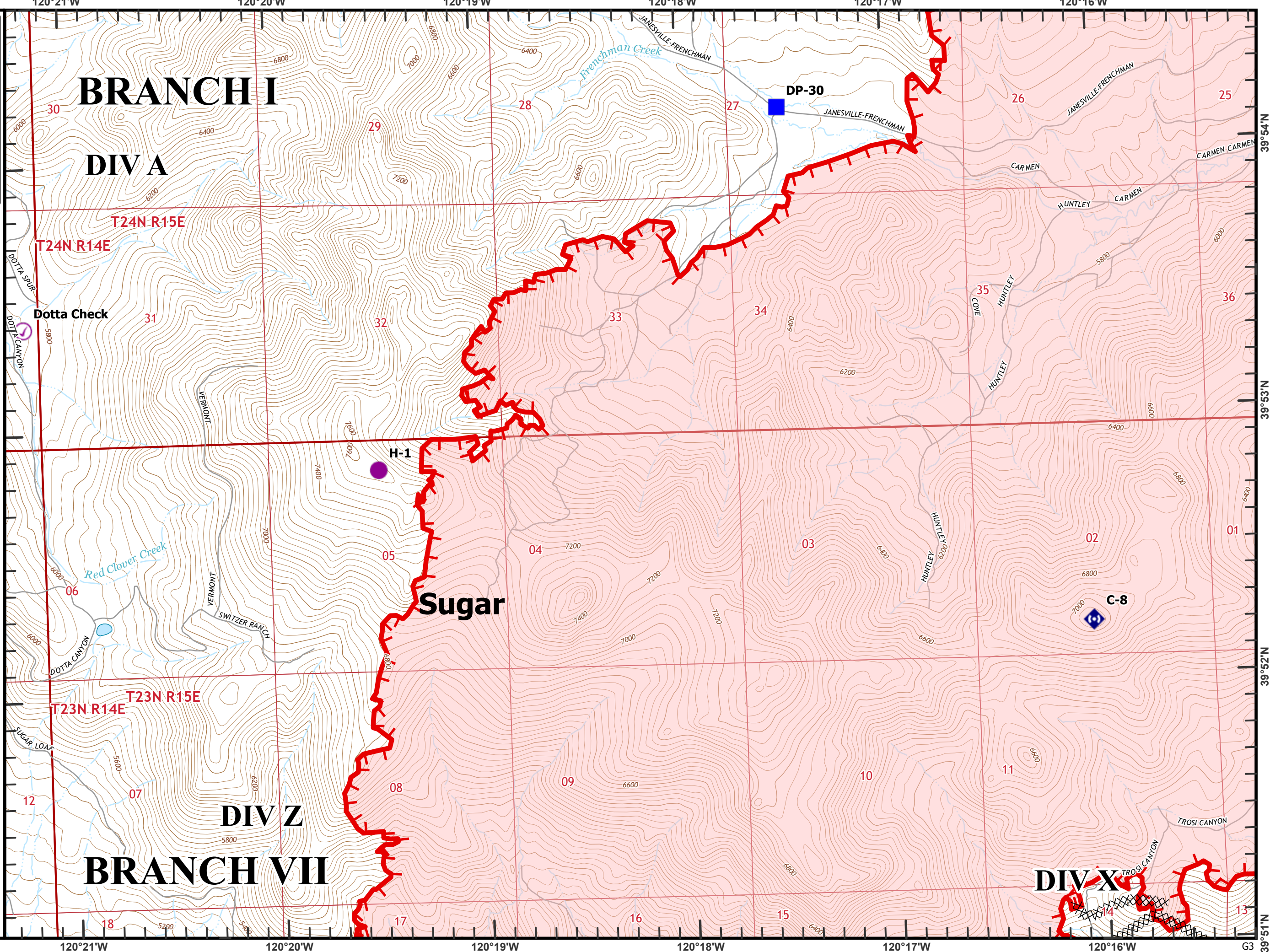
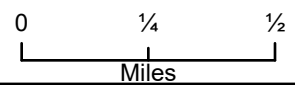
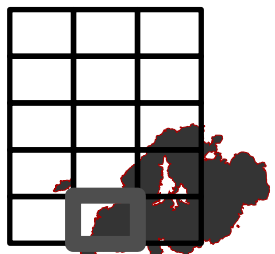


0 1/4 1/2
Miles



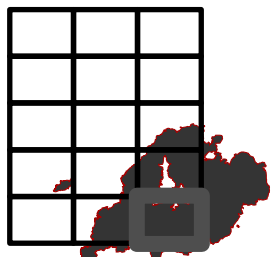
Beckworth Complex
CA-PNF-001064
NAD83, Zone 10
IAP Tiles
07/11/2021
Day Shift
Branch I
Index Grid
G3

- ⊗ Completed Dozer Line
- H Completed Hand Line
- ⊙ Check Point
- Helispot
- Drop Point
- ⬠ Repeater
- └ Fire Edge

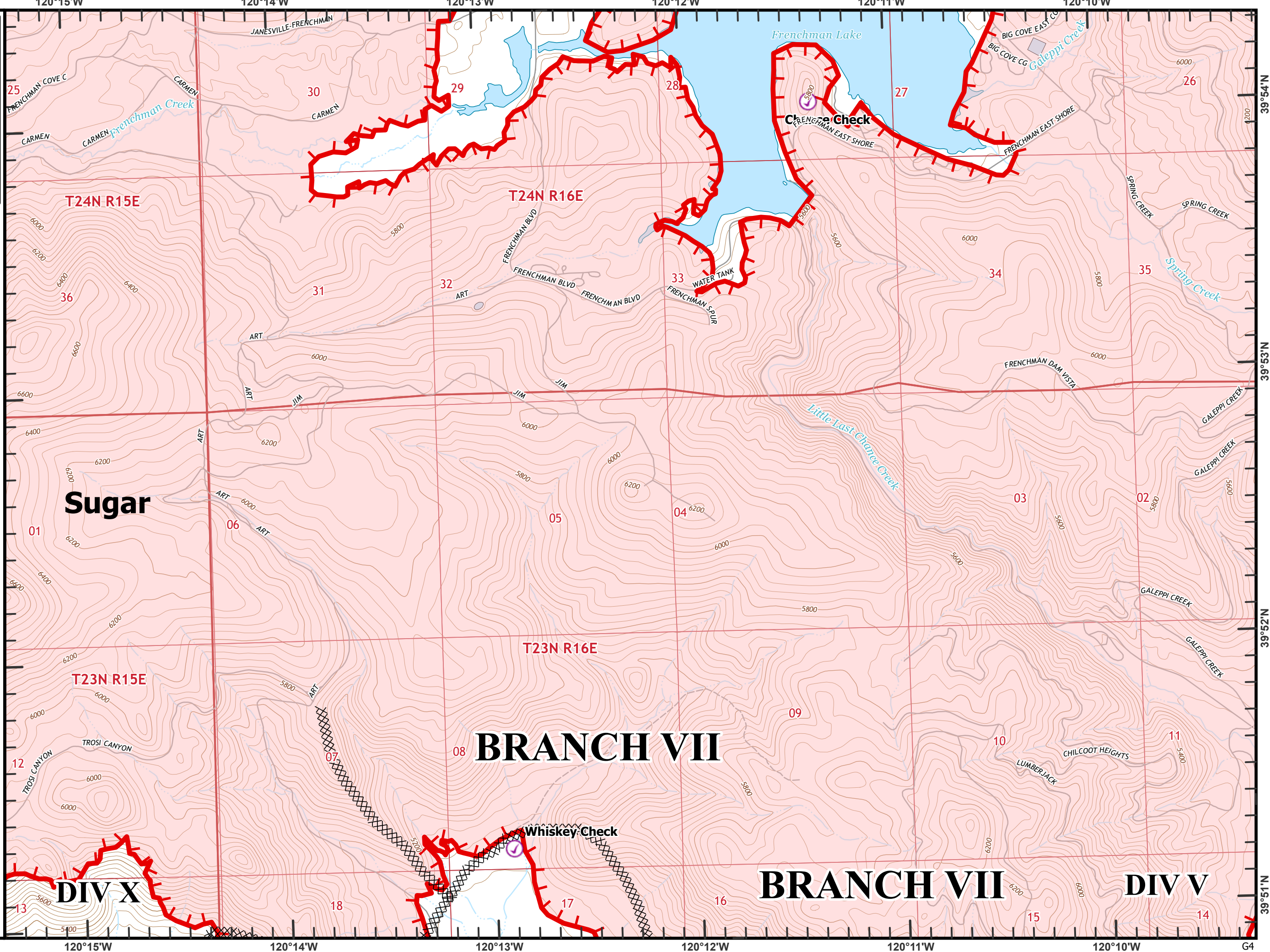


Beckworth Complex
CA-PNF-001064
NAD83, Zone 10
IAP Tiles
07/11/2021
Day Shift
Branch I
Index Grid
G4

- ⊗ Completed Dozer Line
- ⊙ Check Point
- ⊙ Dip Site
- ▬ Fire Edge



0 1/4 1/2 Miles



39°54'N
39°53'N
39°52'N
39°51'N
G4