

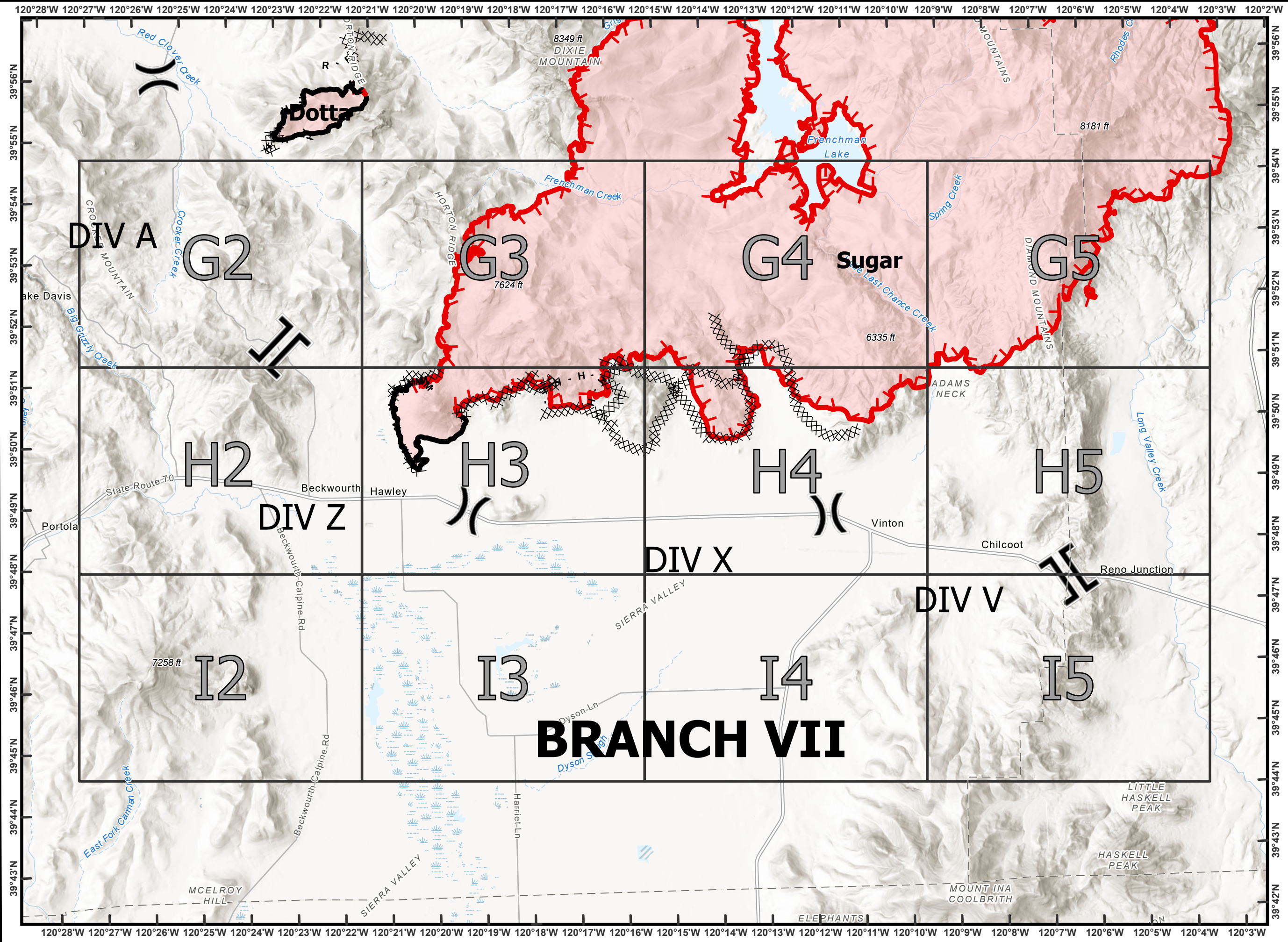
Beckwourth Complex
CA-PNF-001064
NAD83, Zone 10
IAP Index
07/11/2021
Day Shift
Branch VII







- Division Break
- Branch Break
- Completed Dozer Line
- Completed Hand Line
- Completed Mixed Construction Line
- Completed Road as Line
- Planned Dozer Line
- Fire Edge
- Contained Line

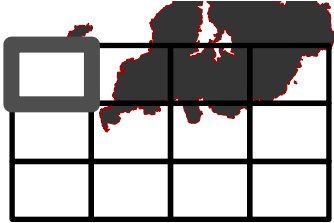


0 1 2
Miles

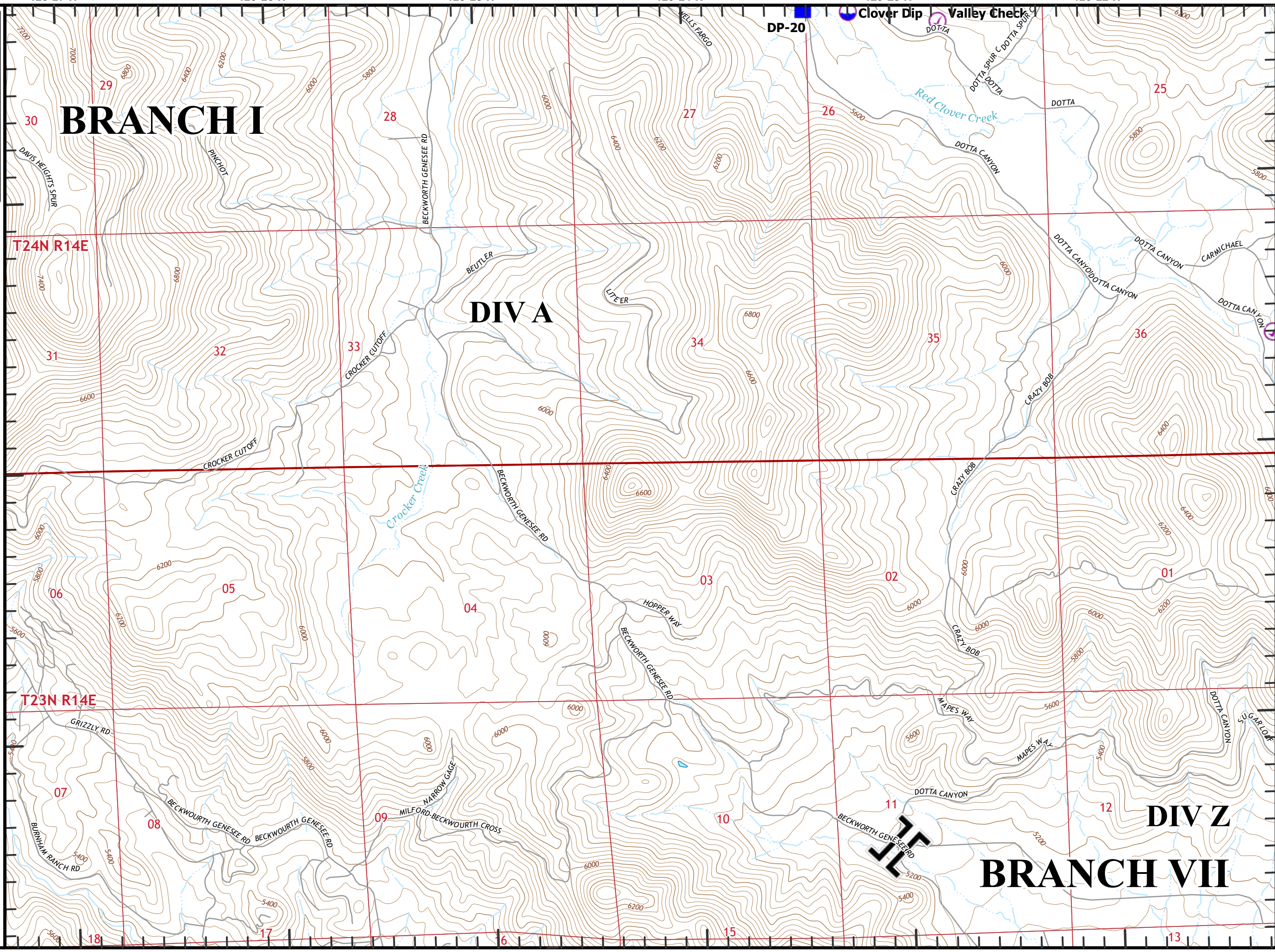


Beckwourth Complex
 CA-PNF-001064
 NAD83, Zone 10
 IAP Tiles
 07/11/2021
 Day Shift
 Branch VII
 Index Grid
 G2

-  Branch Break
-  Check Point
-  Dip Site
-  Drop Point



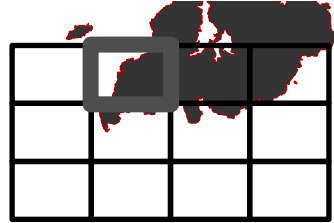
0 1/4 1/2
 Miles



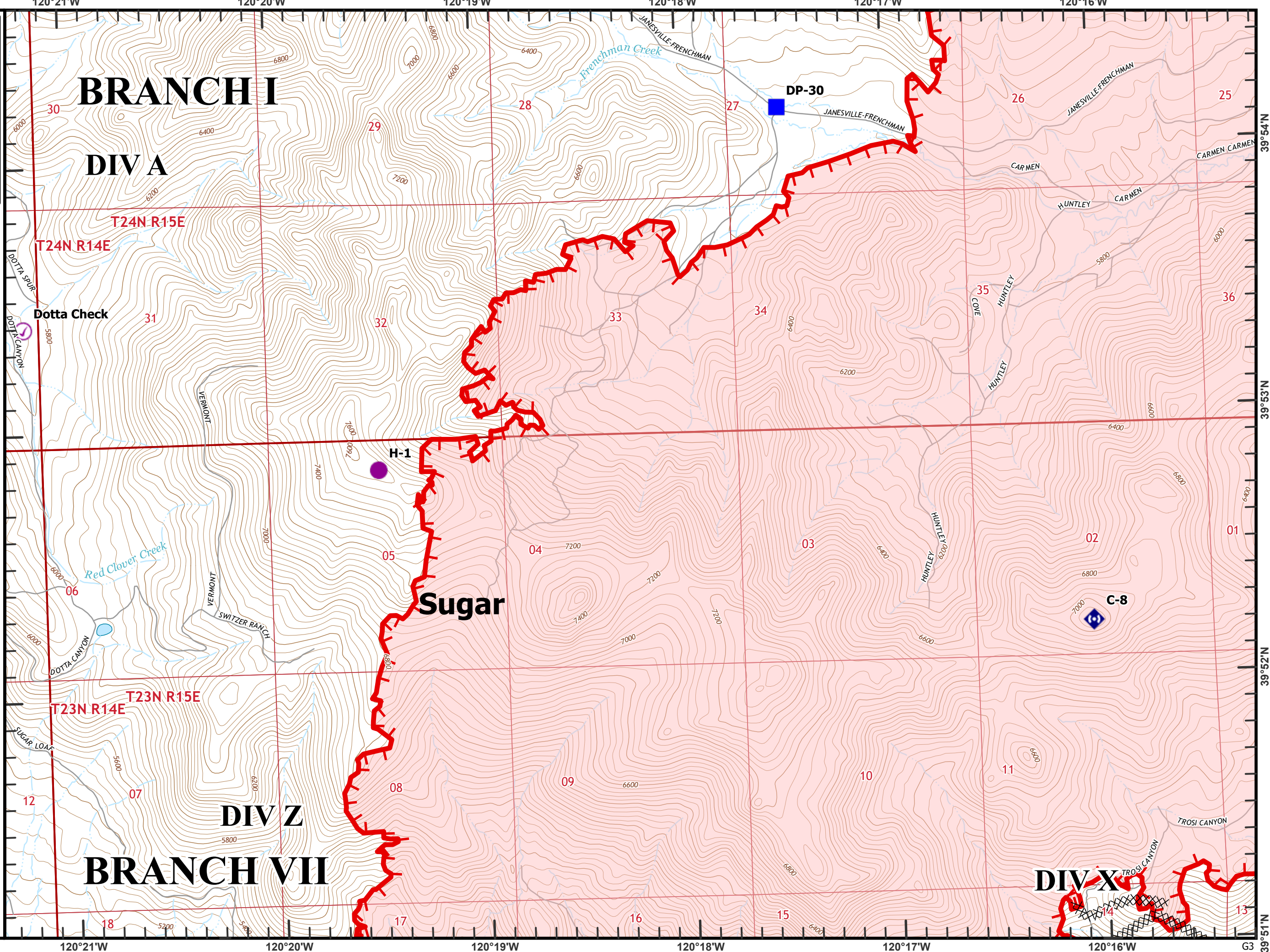
39°54'N
 39°53'N
 39°52'N
 G2

Beckworth Complex
 CA-PNF-001064
 NAD83, Zone 10
 IAP Tiles
 07/11/2021
 Day Shift
 Branch VII
 Index Grid
 G3

- ⊗ Completed Dozer Line
- H Completed Hand Line
- ⊙ Check Point
- Helispot
- Drop Point
- ⬢ Repeater
- └ Fire Edge



0 1/4 1/2
 Miles



BRANCH I

DIV A

Sugar

DIV Z
BRANCH VII

DIV X

DP-30

H-1

C-8

Dotta Check

T24N R14E

T24N R15E

T23N R14E

T23N R15E

120°21'W

120°20'W

120°19'W

120°18'W

120°17'W

120°16'W

G3

39°54'N

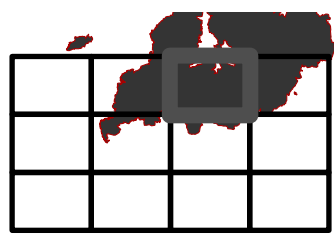
39°53'N

39°52'N

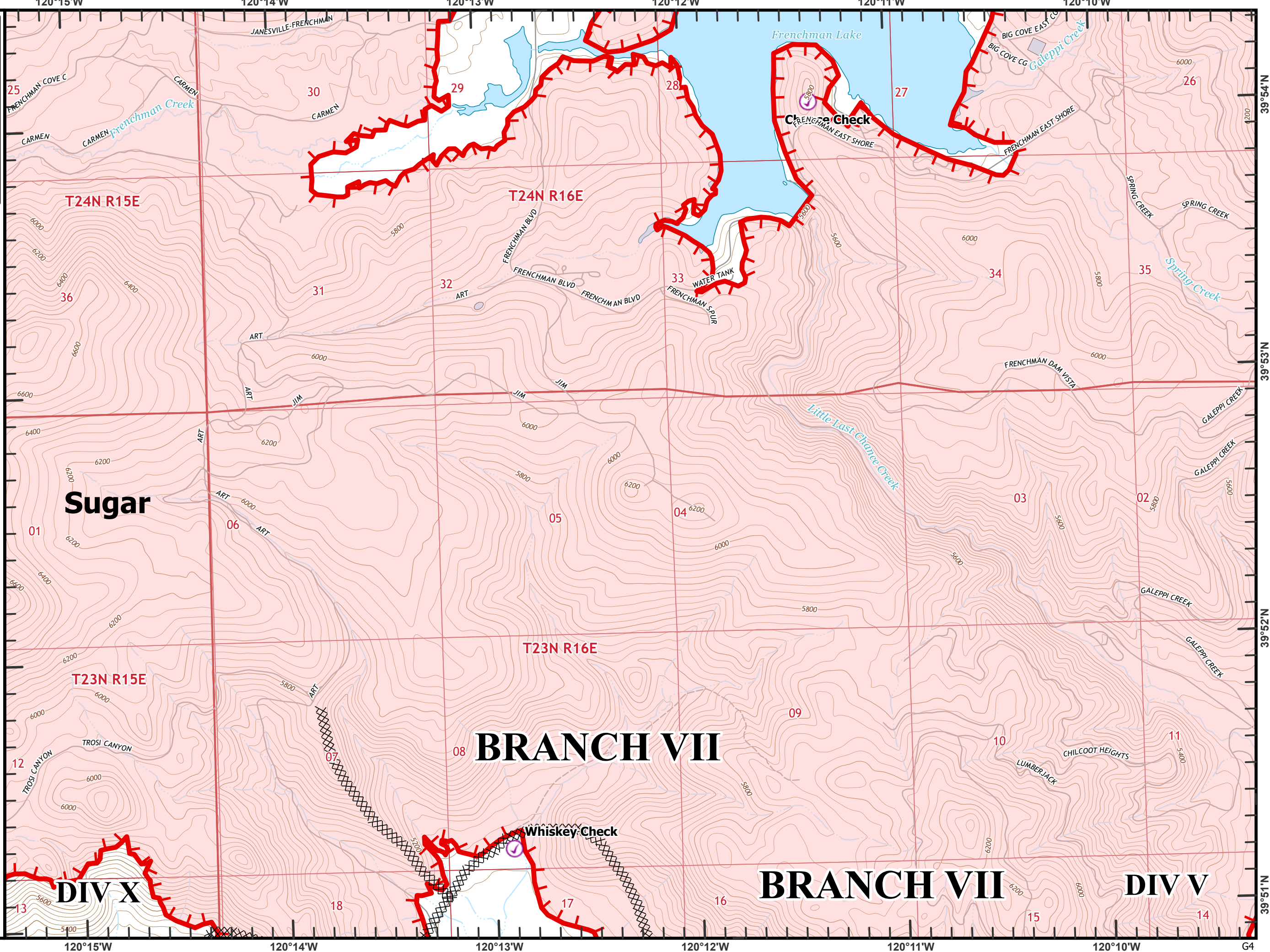
39°51'N

Beckworth Complex
CA-PNF-001064
NAD83, Zone 10
IAP Tiles
07/11/2021
Day Shift
Branch VII
Index Grid
G4

- ⊗ Completed Dozer Line
- ⊙ Check Point
- ▬ Fire Edge



0 1/4 1/2
 Miles



T24N R15E

T24N R16E

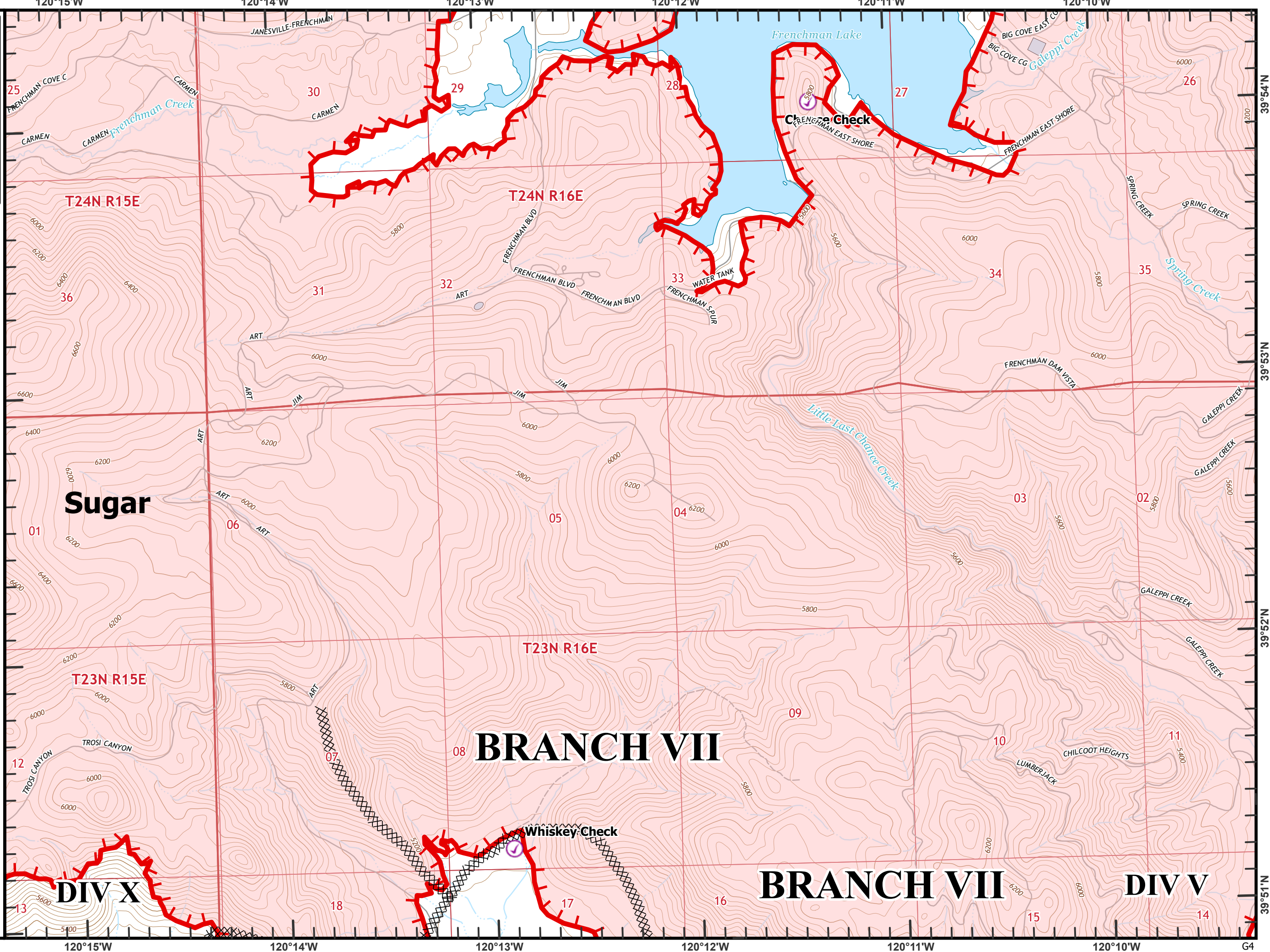
SUGAR

BRANCH VII

DIV X

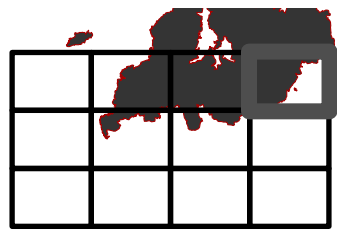
BRANCH VII

DIV V

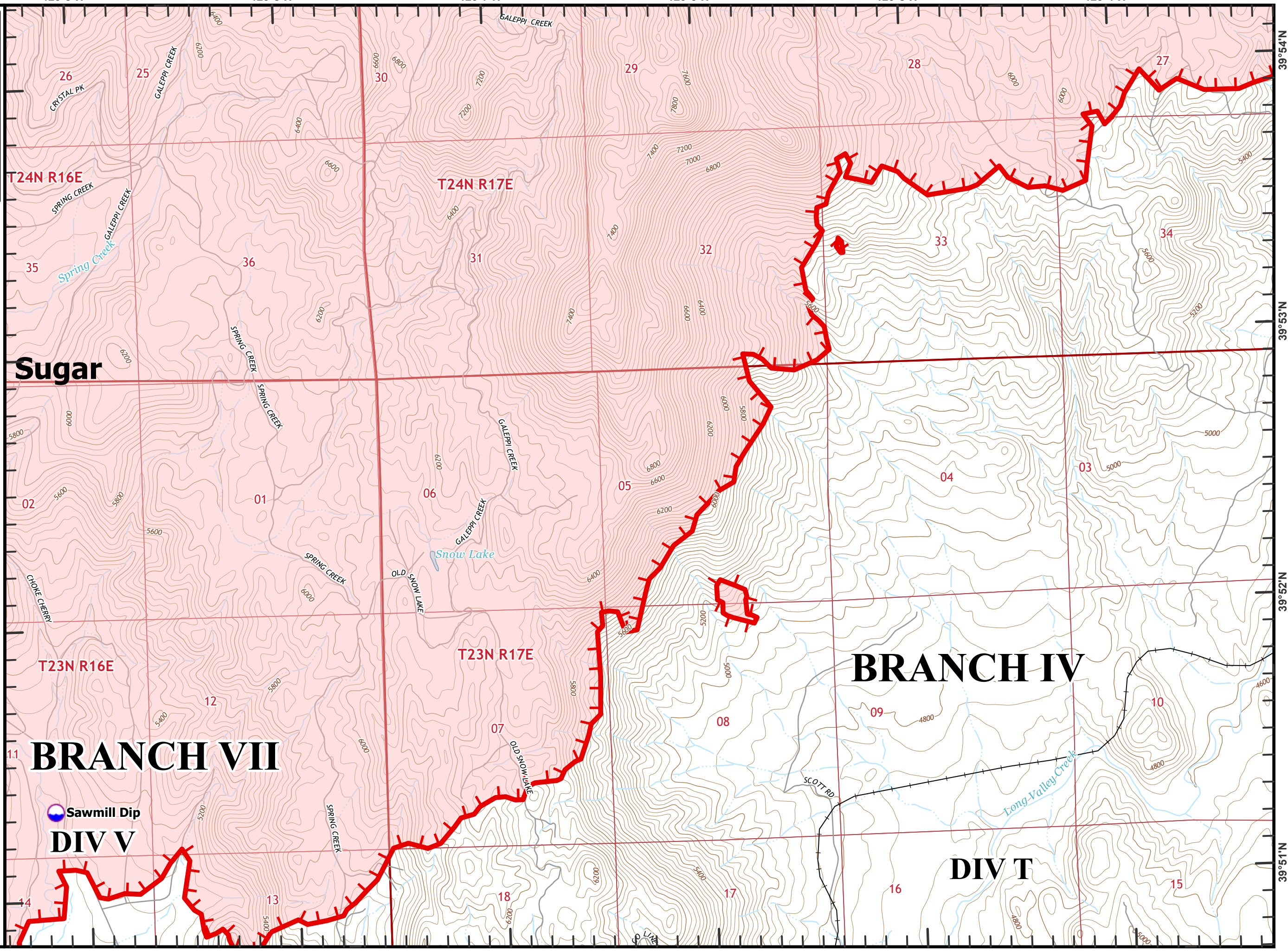


Beckworth Complex
CA-PNF-001064
NAD83, Zone 10
IAP Tiles
07/11/2021
Day Shift
Branch VII
Index Grid
G5

-  Dip Site
-  Fire Edge
-  Railroad



0 1/4 1/2
Miles



T24N R16E

T24N R17E

Sugar

T23N R16E

T23N R17E

BRANCH IV

BRANCH VII

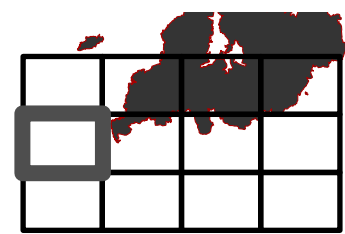
Sawmill Dip

DIV V

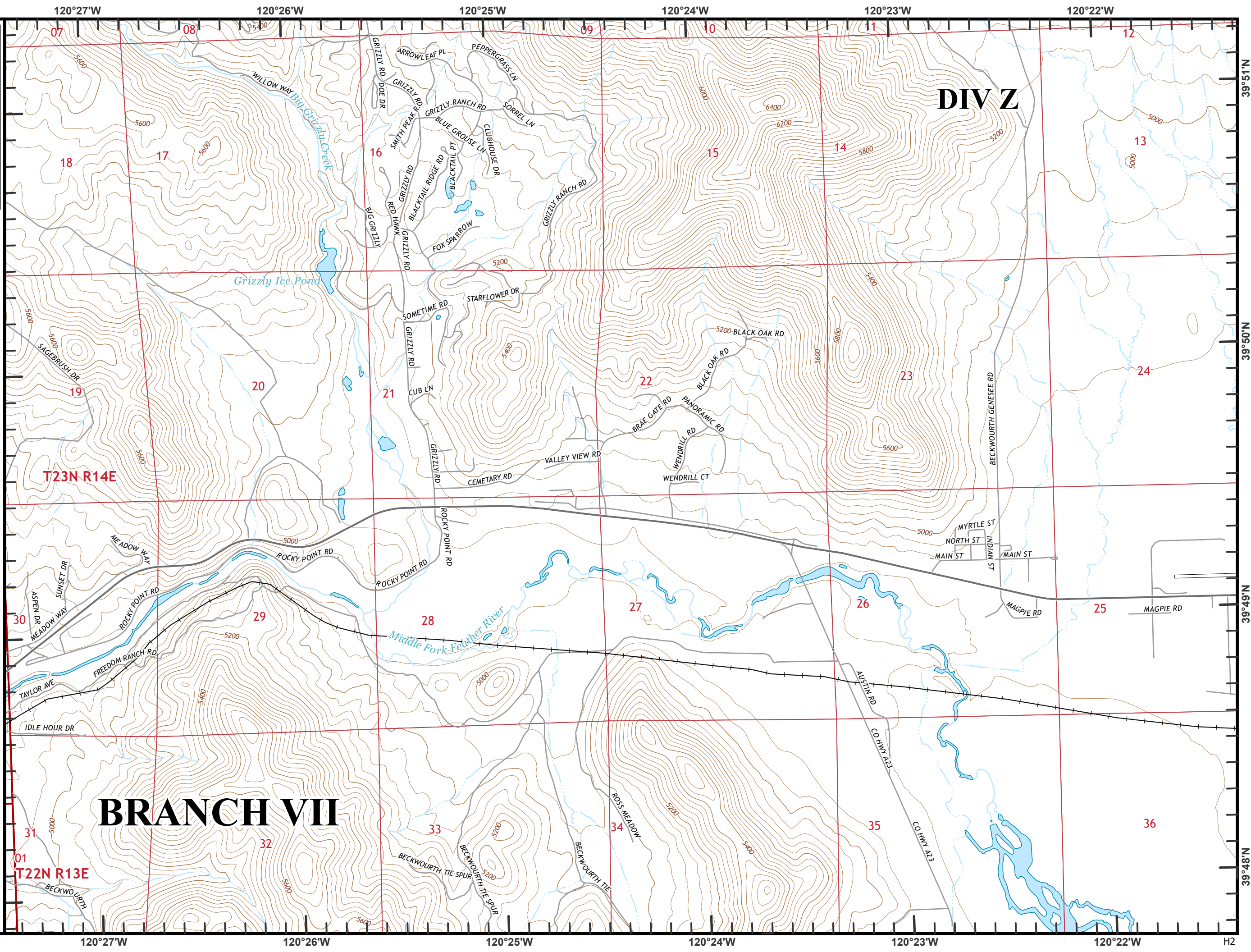
DIV T

Beckwourth Complex
CA-PNF-001064
NAD83, Zone 10
IAP Tiles
07/11/2021
Day Shift
Branch VII
Index Grid
H2

—+— Railroad



0 1/4 1/2
Miles



DIV Z

BRANCH VII

T23N R14E

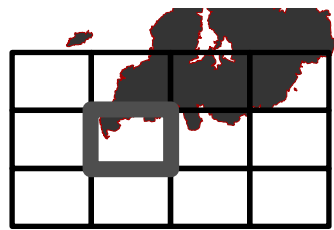
T22N R13E

H2

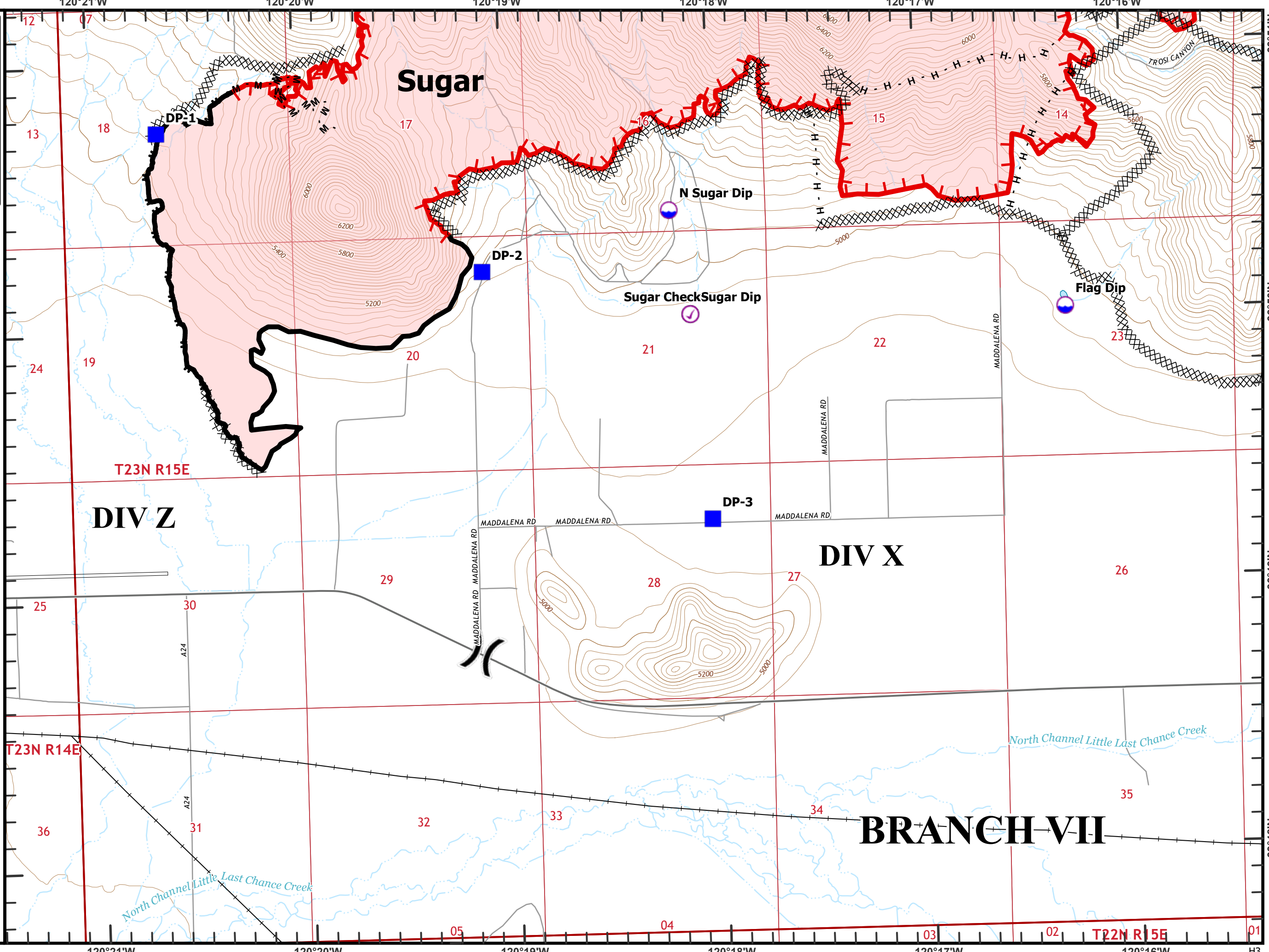
Beckworth Complex
CA-PNF-001064
NAD83, Zone 10
IAP Tiles
07/11/2021
Day Shift
Branch VII
Index Grid
H3

- ⊗ Completed Dozer Line
- H Completed Hand Line
- M Completed Mixed Construction Line

- () Division Break
- ⊙ Check Point
- ⊙ Dip Site
- Drop Point
- ┌ Fire Edge
- ▬ Contained Line
- Railroad



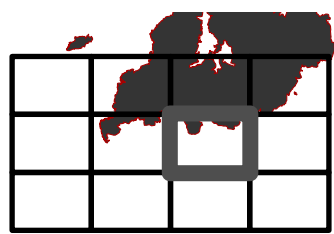
0 1/4 1/2
 Miles



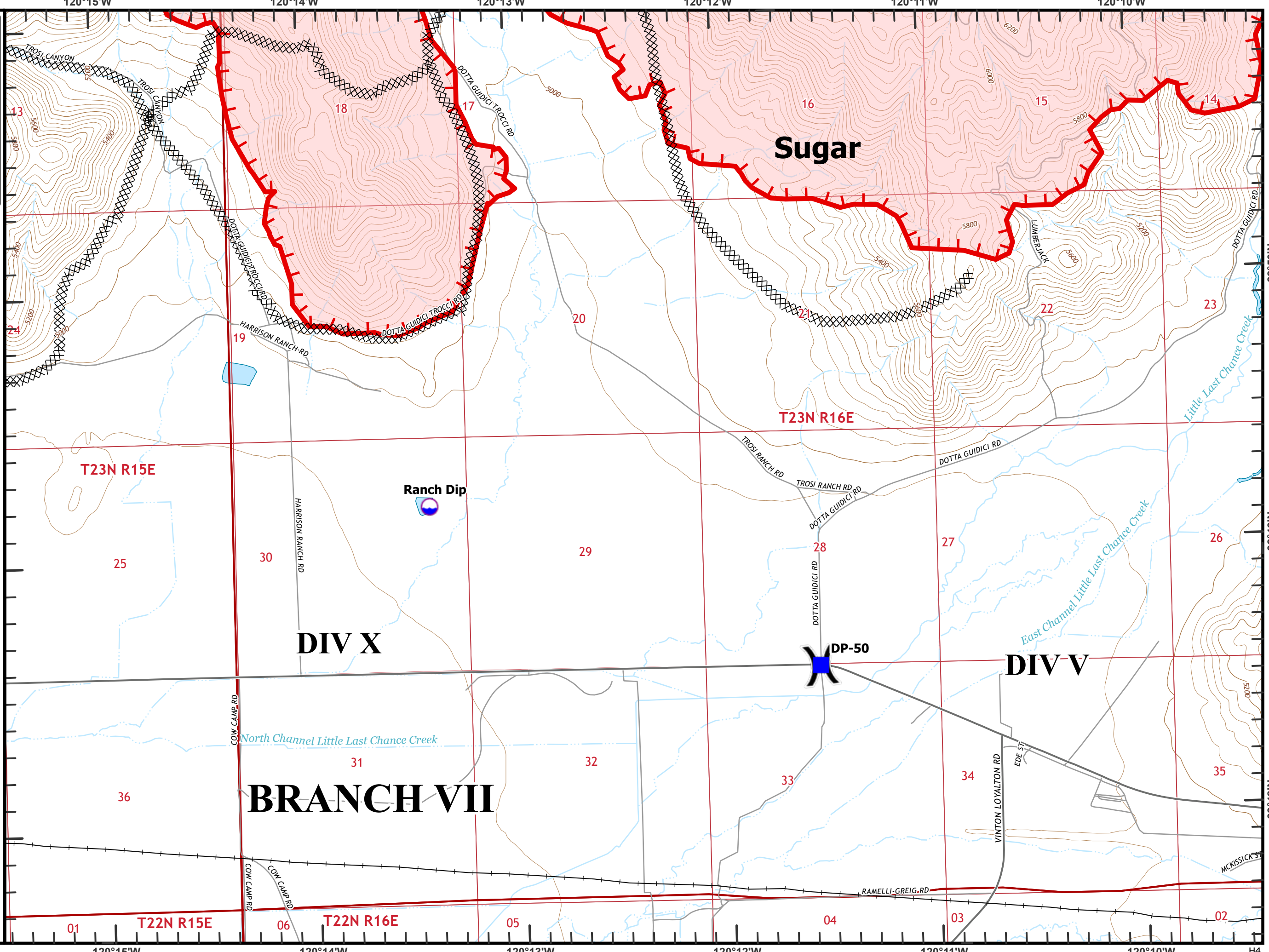
120°21'W 120°20'W 120°19'W 120°18'W 120°17'W 120°16'W H3

Beckworth Complex
CA-PNF-001064
NAD83, Zone 10
IAP Tiles
07/11/2021
Day Shift
Branch VII
Index Grid
H4




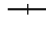
- ⊗ Completed Dozer Line
- ⌋ Division Break
- 📍 Dip Site
- 📍 Sling Site
- 📍 Drop Point
- 🔴 Fire Edge
- Railroad

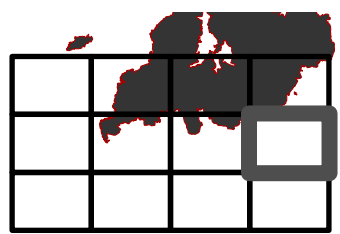


0 1/4 1/2 Miles

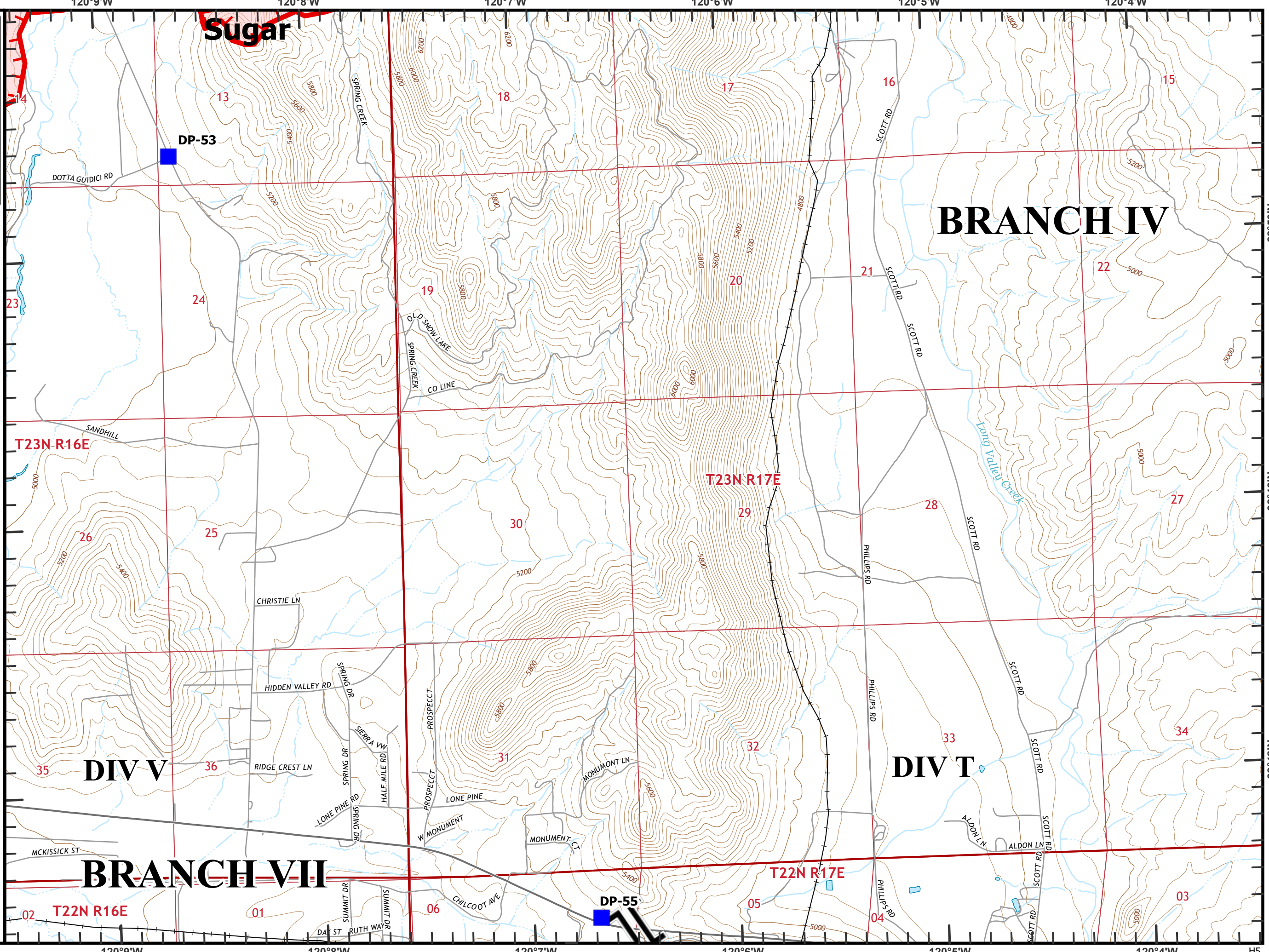


Beckworth Complex
CA-PNF-001064
NAD83, Zone 10
IAP Tiles
07/11/2021
Day Shift
Branch VII
Index Grid
H5

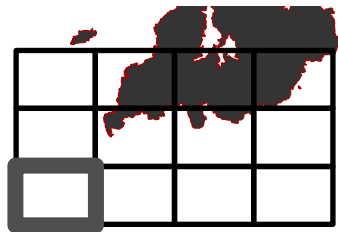
-  Branch Break
-  Drop Point
-  Fire Edge
-  Railroad



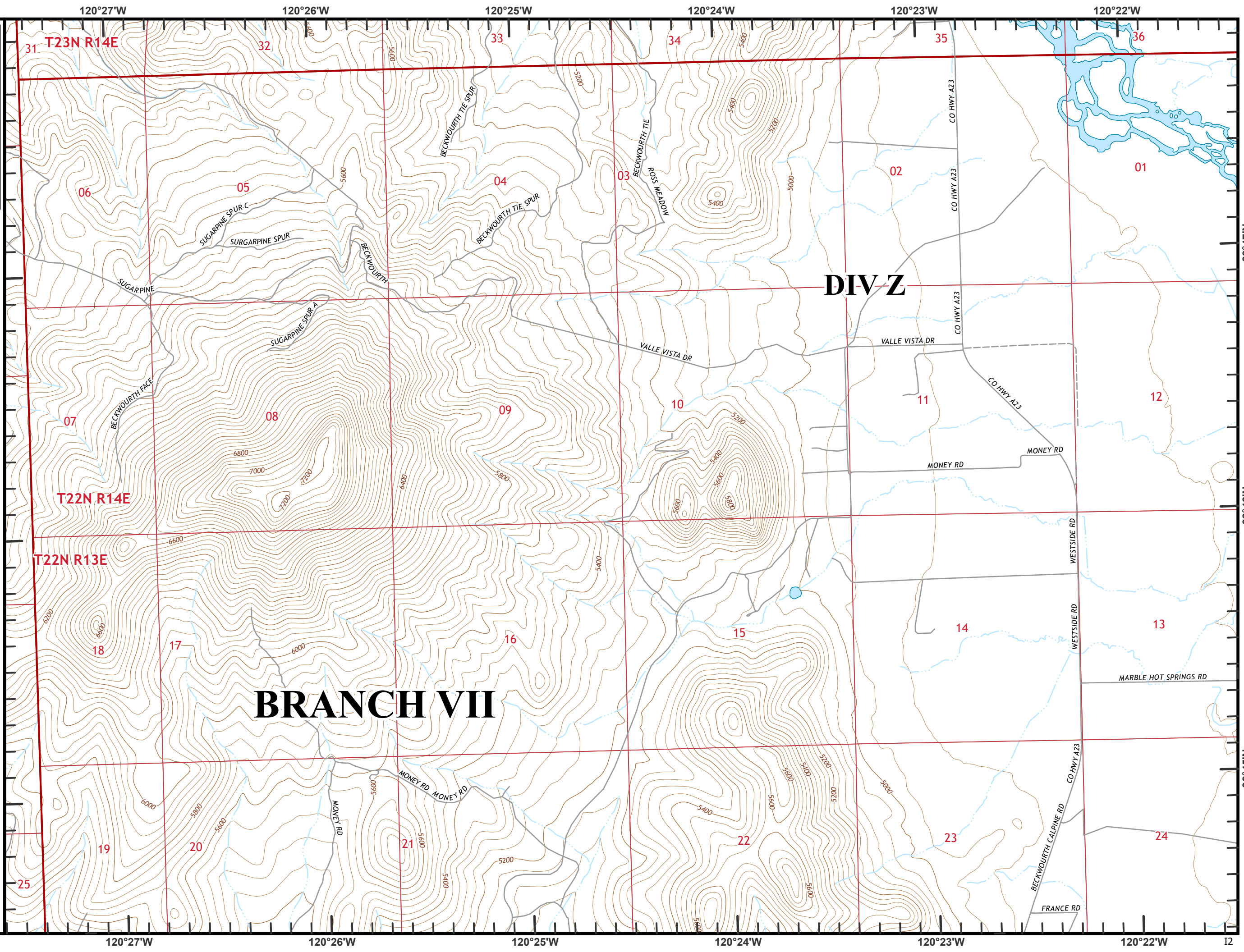
0 1/4 1/2
Miles



Beckwourth Complex
CA-PNF-001064
NAD83, Zone 10
IAP Tiles
07/11/2021
Day Shift
Branch VII
Index Grid
I2



0 1/4 1/2
Miles



39°47'N

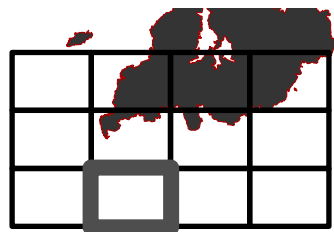
39°46'N

39°45'N

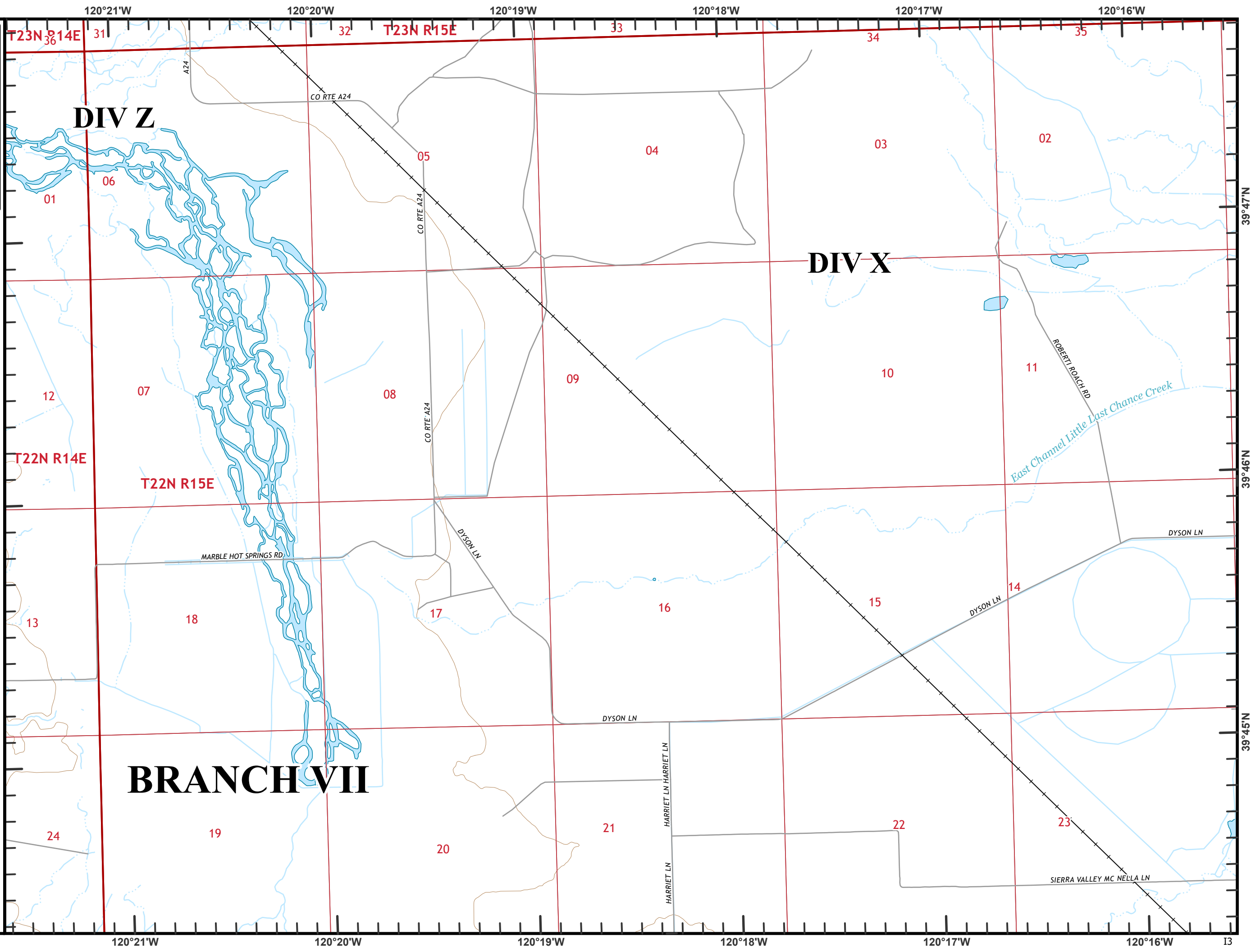
I2

Beckwourth Complex
CA-PNF-001064
NAD83, Zone 10
IAP Tiles
07/11/2021
Day Shift
Branch VII
Index Grid
I3

—+— Railroad

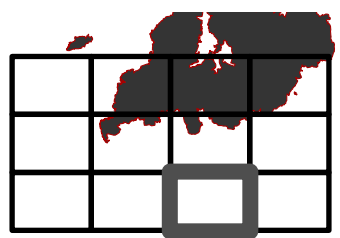


0 1/4 1/2
Miles

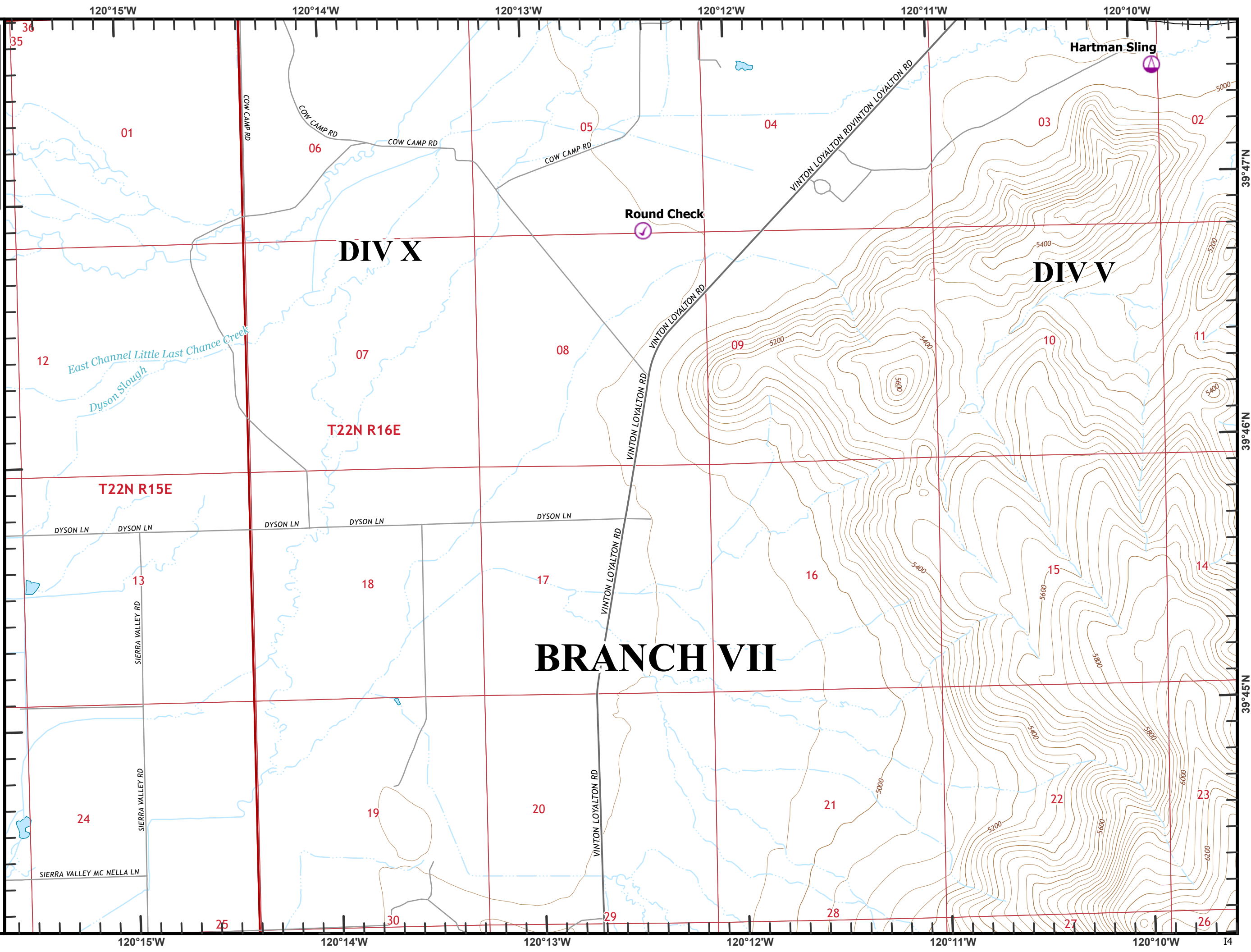


Beckworth Complex
CA-PNF-001064
NAD83, Zone 10
IAP Tiles
07/11/2021
Day Shift
Branch VII
Index Grid
14

- 📍 Check Point
- 📍 Sling Site
- Railroad



0 1/4 1/2
Miles



DIV X

DIV V

BRANCH VII

T22N R16E

T22N R15E

120°15'W 120°14'W 120°13'W 120°12'W 120°11'W 120°10'W 14

36 35 01 06 05 04 03 02 12 07 08 09 10 11 13 18 17 16 15 14 24 19 20 21 22 23 25 30 29 28 27 26

39°47'N 39°46'N 39°45'N

Beckworth Complex
CA-PNF-001064
NAD83, Zone 10
IAP Tiles
07/11/2021
Day Shift
Branch VII
Index Grid
I5



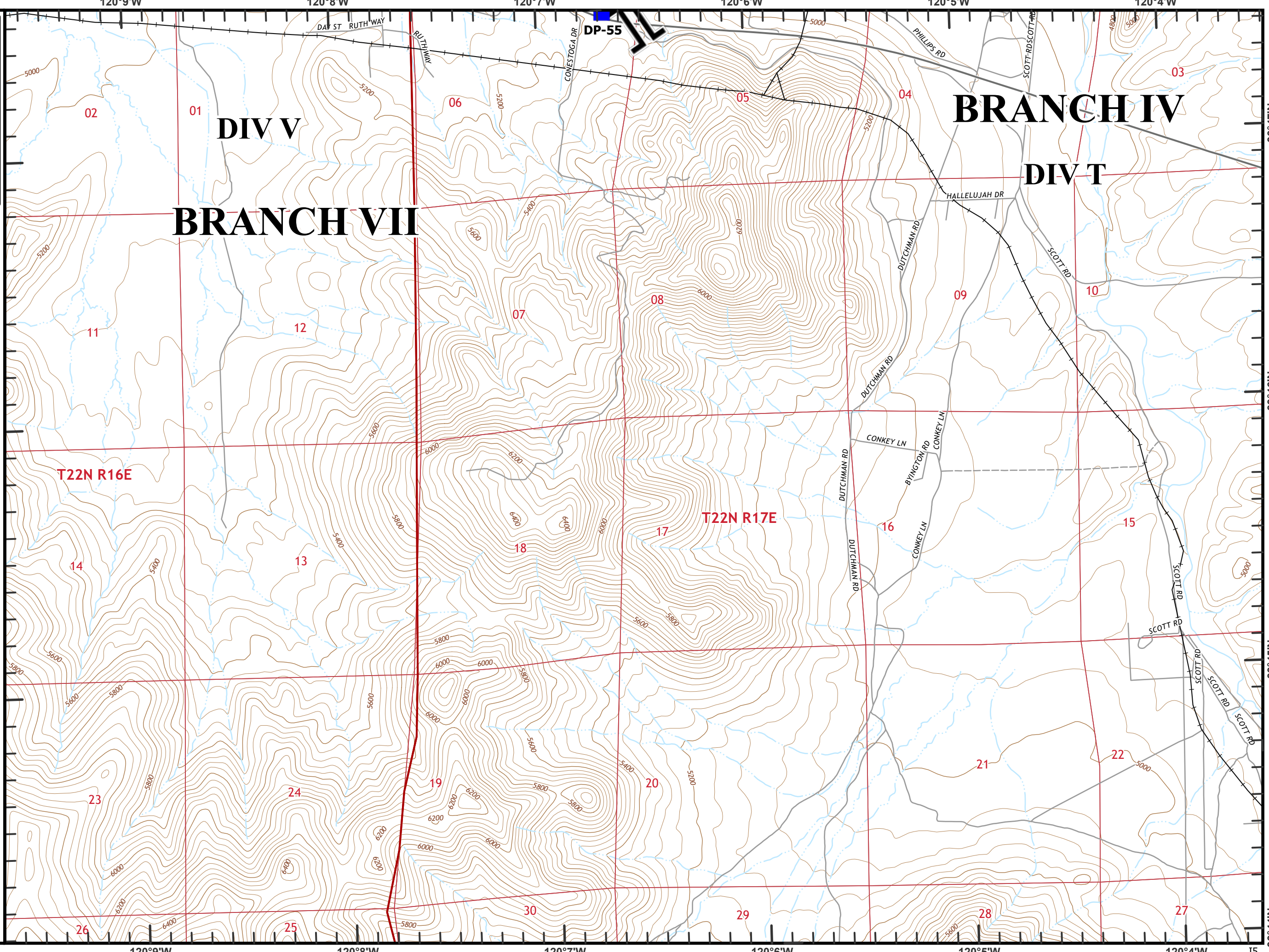
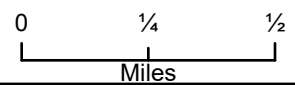
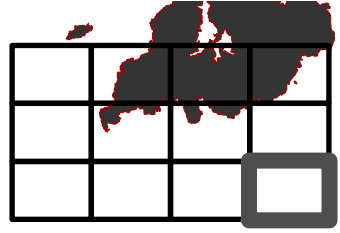
Branch Break



Drop Point



Railroad



DIV V
BRANCH VII

BRANCH IV
DIV T

T22N R16E

T22N R17E

120°9'W 120°8'W 120°7'W 120°6'W 120°5'W 120°4'W I5

39°47'N 39°46'N 39°45'N 39°44'N