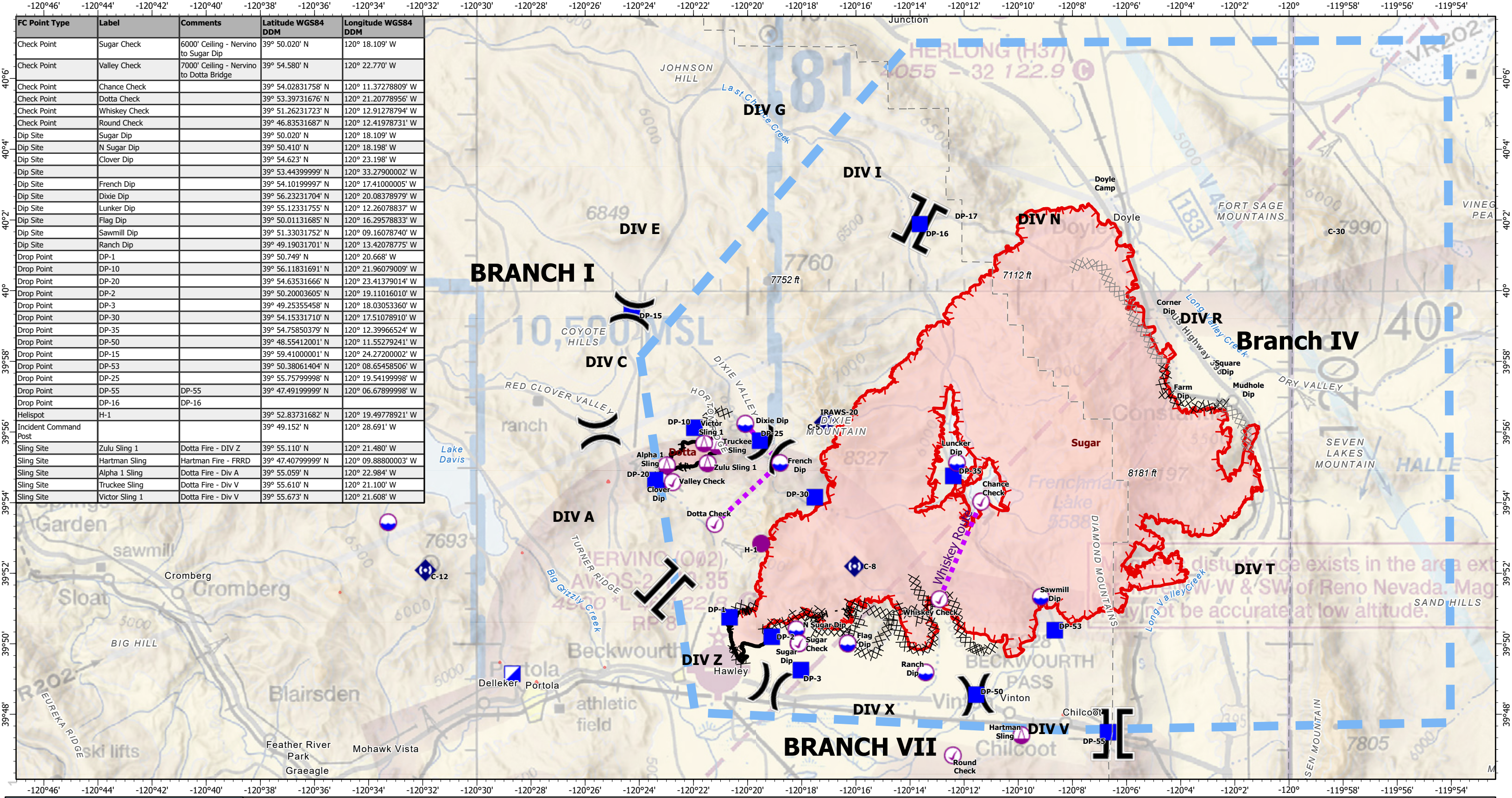


FC Point Type	Label	Comments	Latitude WGS84 DDM	Longitude WGS84 DDM
Check Point	Sugar Check	6000' Ceiling - Nervino to Sugar Dip	39° 50.020' N	120° 18.109' W
Check Point	Valley Check	7000' Ceiling - Nervino to Dotta Bridge	39° 54.580' N	120° 22.770' W
Check Point	Chance Check		39° 54.02831758' N	120° 11.37278809' W
Check Point	Dotta Check		39° 53.39731676' N	120° 21.20778956' W
Check Point	Whiskey Check		39° 51.26231723' N	120° 12.91278794' W
Check Point	Round Check		39° 46.83531687' N	120° 12.41978731' W
Dip Site	Sugar Dip		39° 50.020' N	120° 18.109' W
Dip Site	N Sugar Dip		39° 50.410' N	120° 18.198' W
Dip Site	Clover Dip		39° 54.623' N	120° 23.198' W
Dip Site	French Dip		39° 53.44399999' N	120° 33.27900002' W
Dip Site	Dixie Dip		39° 54.10199997' N	120° 17.41000005' W
Dip Site	Lunker Dip		39° 56.23231704' N	120° 20.08378979' W
Dip Site	Flag Dip		39° 55.12331755' N	120° 12.26078833' W
Dip Site	Sawmill Dip		39° 50.01131685' N	120° 16.29578833' W
Dip Site	Ranch Dip		39° 51.33031752' N	120° 09.16078740' W
Drop Point	DP-1		39° 50.749' N	120° 20.668' W
Drop Point	DP-10		39° 56.11831691' N	120° 21.96079009' W
Drop Point	DP-20		39° 54.63531666' N	120° 23.41379014' W
Drop Point	DP-2		39° 50.20003605' N	120° 19.11016010' W
Drop Point	DP-3		39° 49.25355458' N	120° 18.03053360' W
Drop Point	DP-30		39° 54.15331710' N	120° 17.51078910' W
Drop Point	DP-35		39° 54.75850379' N	120° 12.39966524' W
Drop Point	DP-50		39° 48.55412001' N	120° 11.55279241' W
Drop Point	DP-15		39° 59.41000001' N	120° 24.27200002' W
Drop Point	DP-53		39° 50.38061404' N	120° 08.65458506' W
Drop Point	DP-25		39° 55.75799998' N	120° 19.54199998' W
Drop Point	DP-55	DP-55	39° 47.49199999' N	120° 06.67899998' W
Drop Point	DP-16	DP-16		
Helispot	H-1		39° 52.83731682' N	120° 19.49778921' W
Incident Command Post			39° 49.152' N	120° 28.691' W
Sling Site	Zulu Sling 1	Dotta Fire - DIV Z	39° 55.110' N	120° 21.480' W
Sling Site	Hartman Sling	Hartman Fire - FRRD	39° 47.40799999' N	120° 09.88800003' W
Sling Site	Alpha 1 Sling	Dotta Fire - Div A	39° 55.059' N	120° 22.984' W
Sling Site	Truckee Sling	Dotta Fire - Div V	39° 55.610' N	120° 21.100' W
Sling Site	Victor Sling 1	Dotta Fire - Div V	39° 55.673' N	120° 21.608' W



**Air Operations**  
**Beckwourth Complex**  
 CA-PNF-001064  
 July 11, 2021  
 0600hrs



( ) Division Break	■ Drop Point	⊗ Planned Dozer Line
⌋ Branch Break	◆ Mobile Weather Unit	■ Temporary Flight Restriction
○ Check Point	◆ Repeater	▬ Fire Edge
● Dip Site	⊗ Completed Dozer Line	▬ Contained Line
● Helispot	H Completed Hand Line	▬ Wildfire Daily Fire Perimeter
○ Sling Site	M Completed Mixed Construction Line	▬ Flight Routes
■ Incident Command Post	R Completed Road as Line	

0 1/2 1 2 3 4  
Miles