

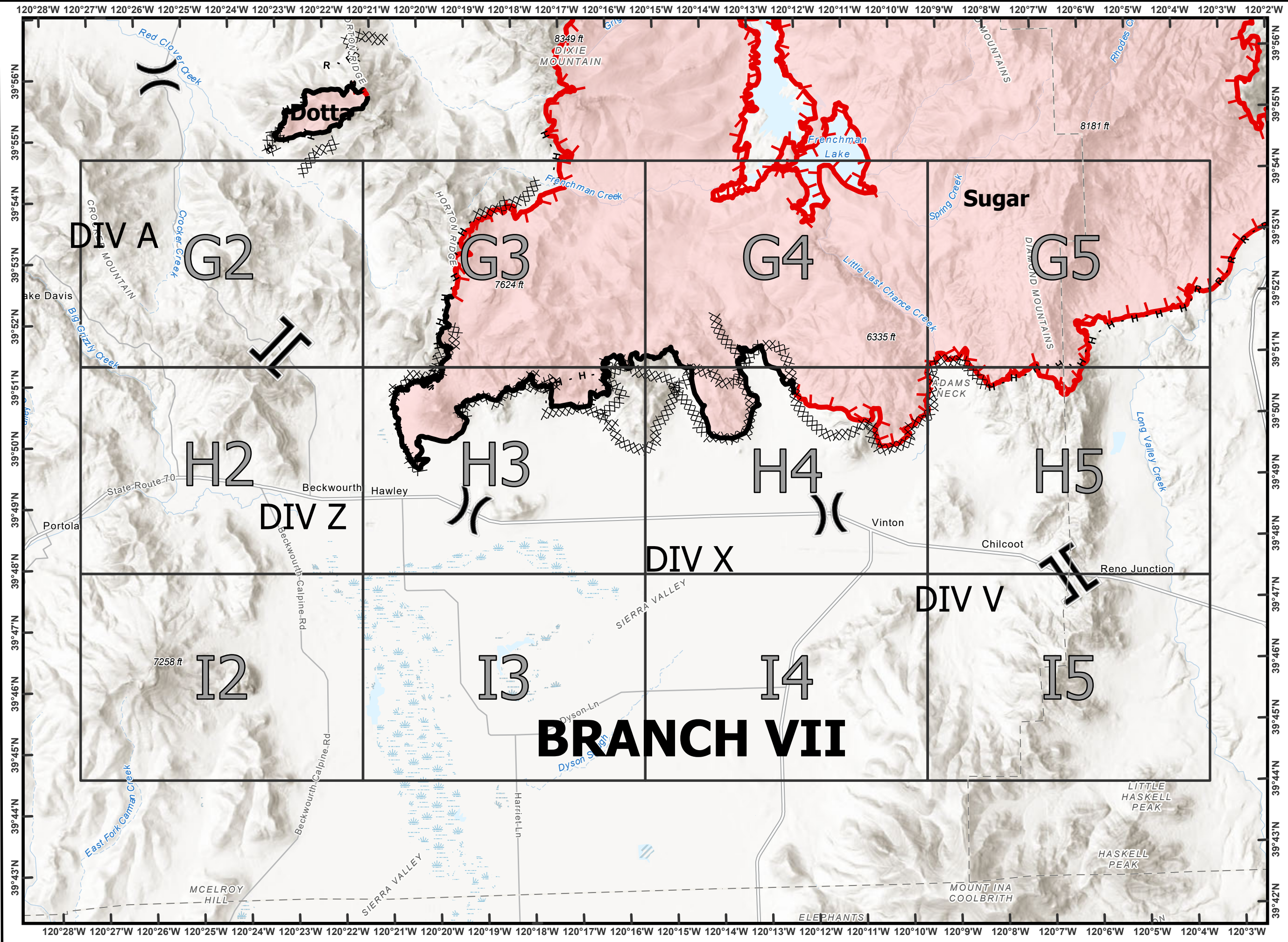
Beckwourth Complex
 CA-PNF-001064
 NAD83, Zone 10
 IAP Index
 07/12/2021
 Day Shift
 Branch VII








- Division Break
- Branch Break
- Completed Dozer Line
- Completed Hand Line
- Completed Mixed Construction Line
- Completed Road as Line
- Planned Dozer Line
- Fire Edge
- Contained Line

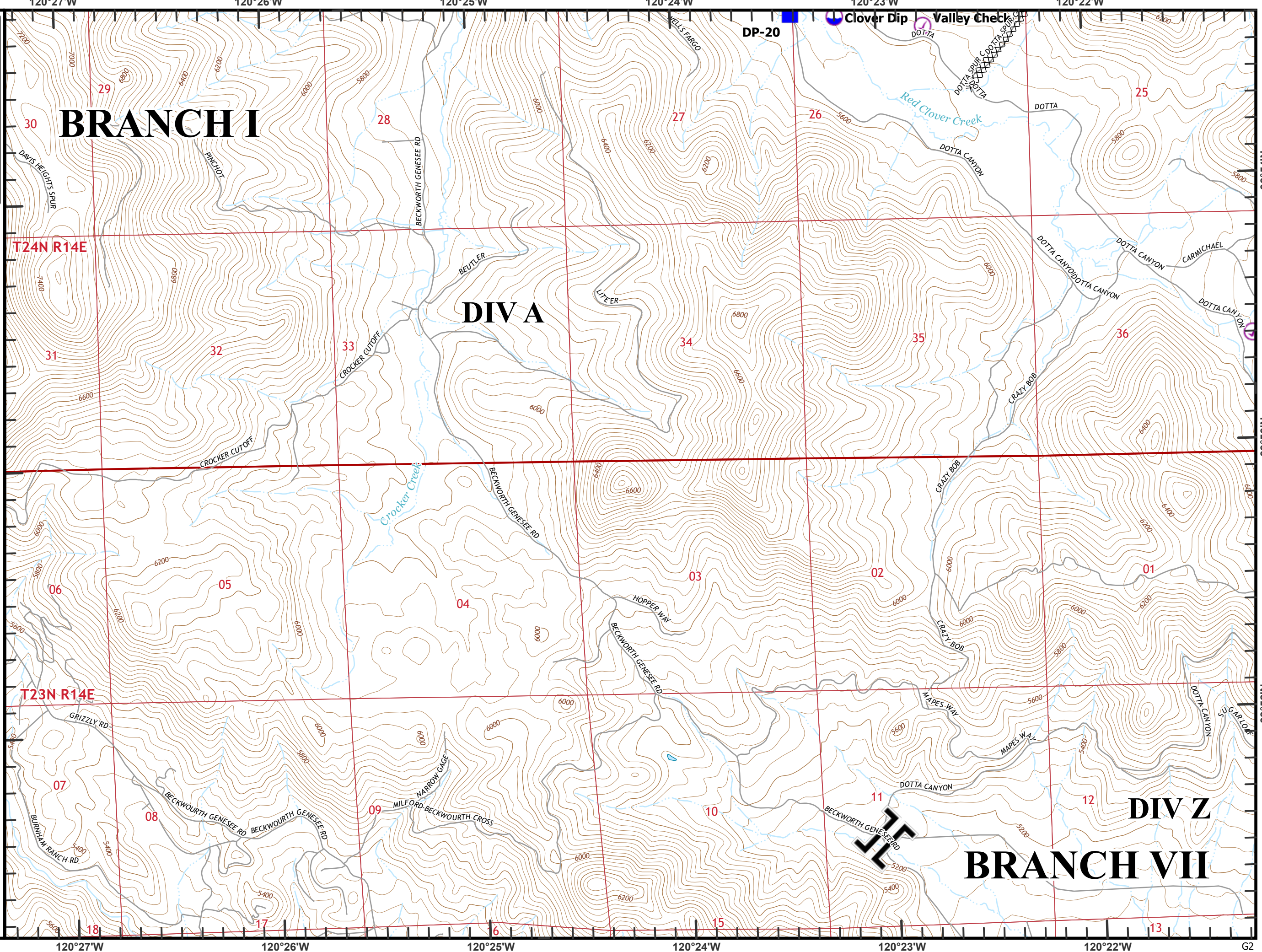
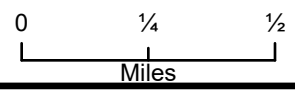


0 1 2
 Miles



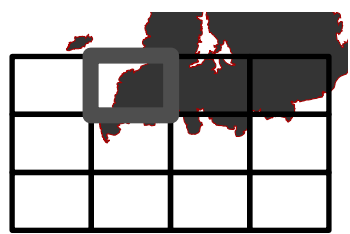
Beckwourth Complex
 CA-PNF-001064
 NAD83, Zone 10
 IAP Tiles
 07/12/2021
 Day Shift
 Branch VII
 Index Grid
 G2

- ⊗ Completed Dozer Line
-  Branch Break
-  Check Point
-  Dip Site
-  Drop Point
-  Stream Crossing

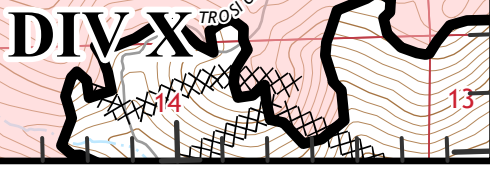
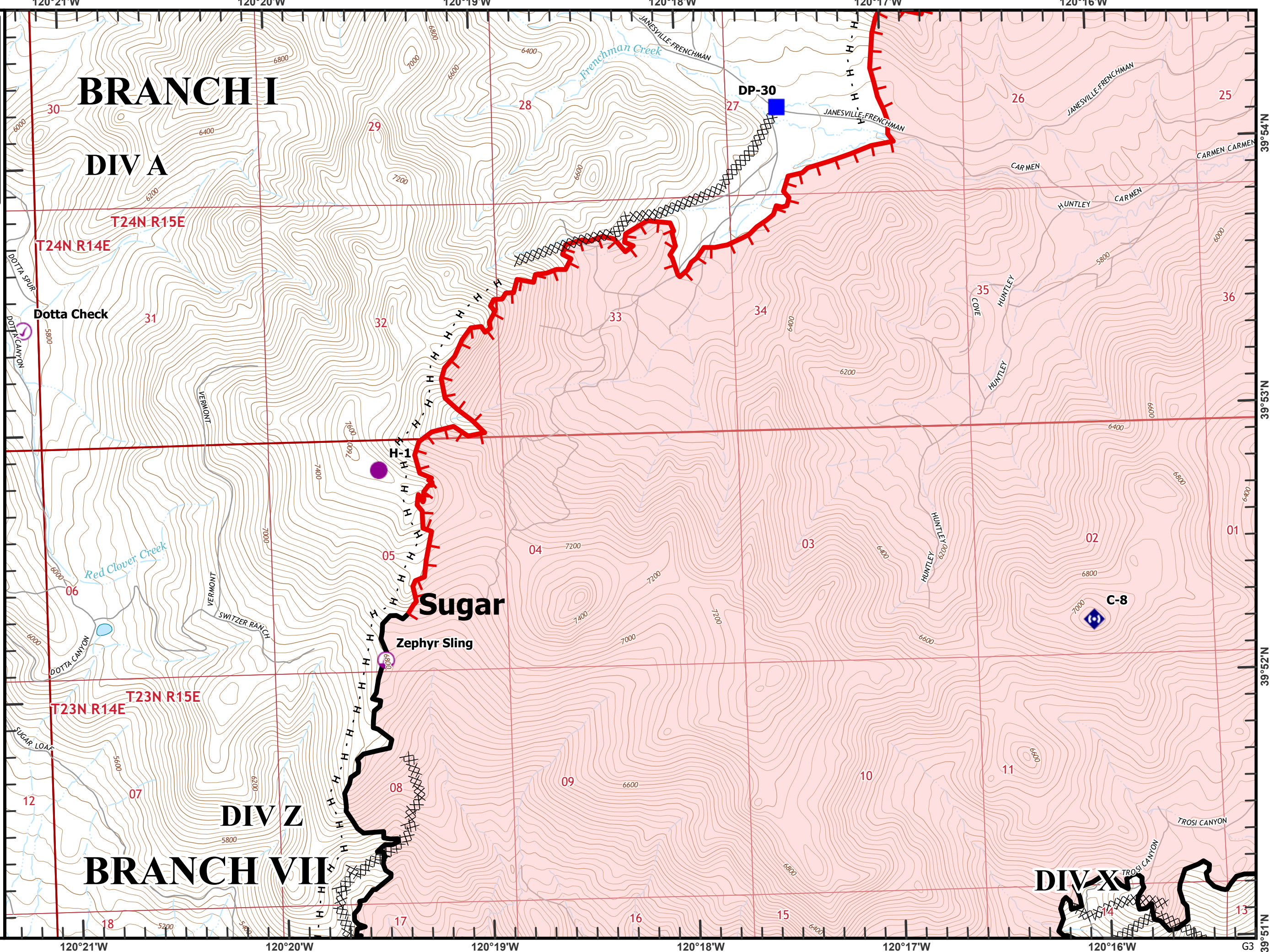


Beckworth Complex
 CA-PNF-001064
 NAD83, Zone 10
 IAP Tiles
 07/12/2021
 Day Shift
 Branch VII
 Index Grid
 G3

- ⊗ Completed Dozer Line
- H Completed Hand Line
- ⊙ Check Point
- Helispot
- ⊙ Sling Site
- Drop Point
- ⊙ Repeater
- ┌ Fire Edge
- ▬ Contained Line

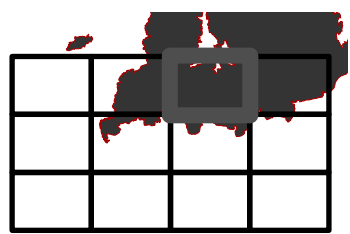


0 1/4 1/2
 Miles

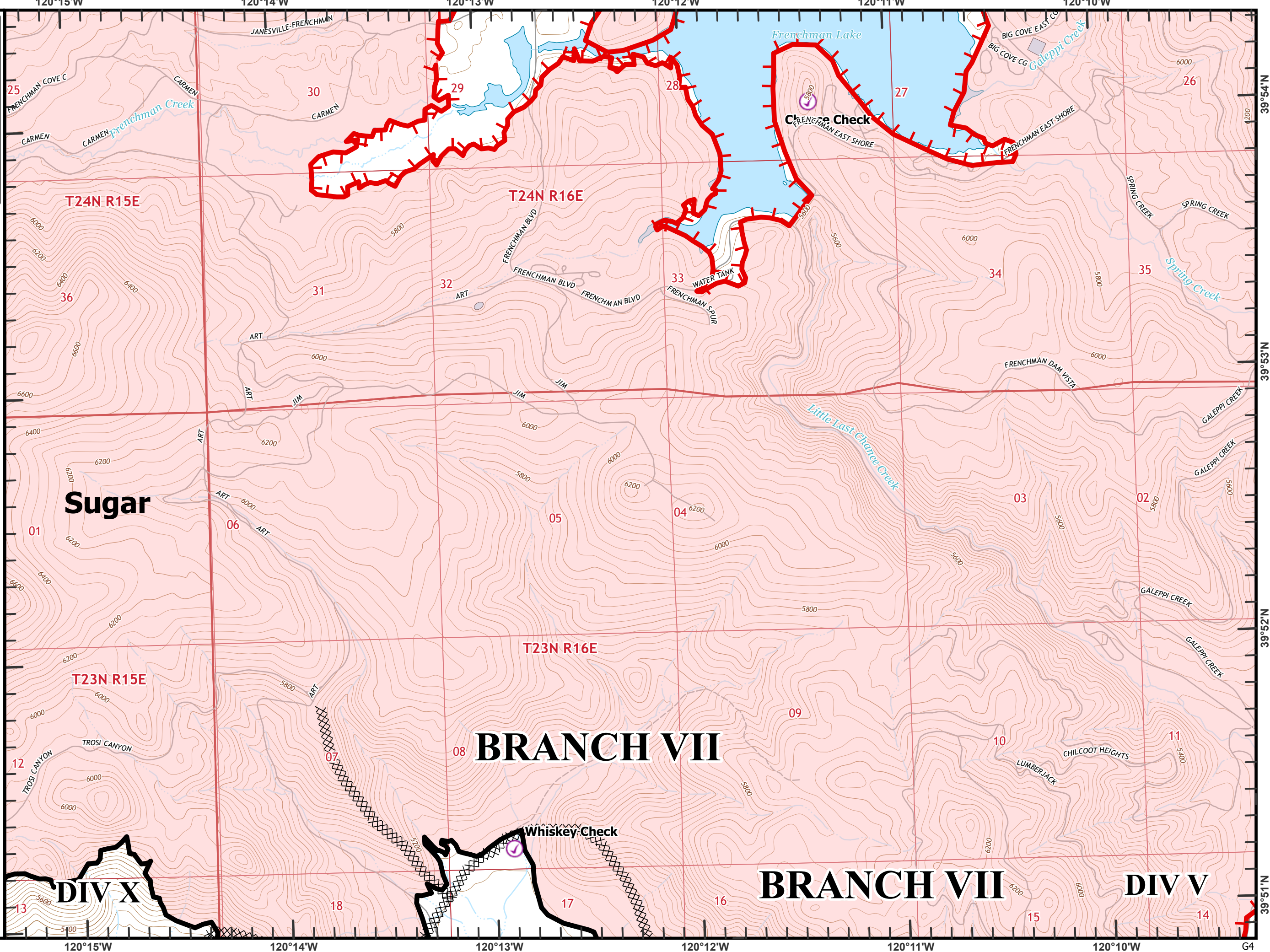


Beckworth Complex
CA-PNF-001064
NAD83, Zone 10
IAP Tiles
07/12/2021
Day Shift
Branch VII
Index Grid
G4

- ⊗ Completed Dozer Line
- ⊙ Check Point
- ▬ Fire Edge
- ▬ Contained Line

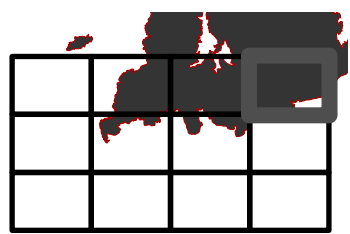


0 1/4 1/2
 Miles

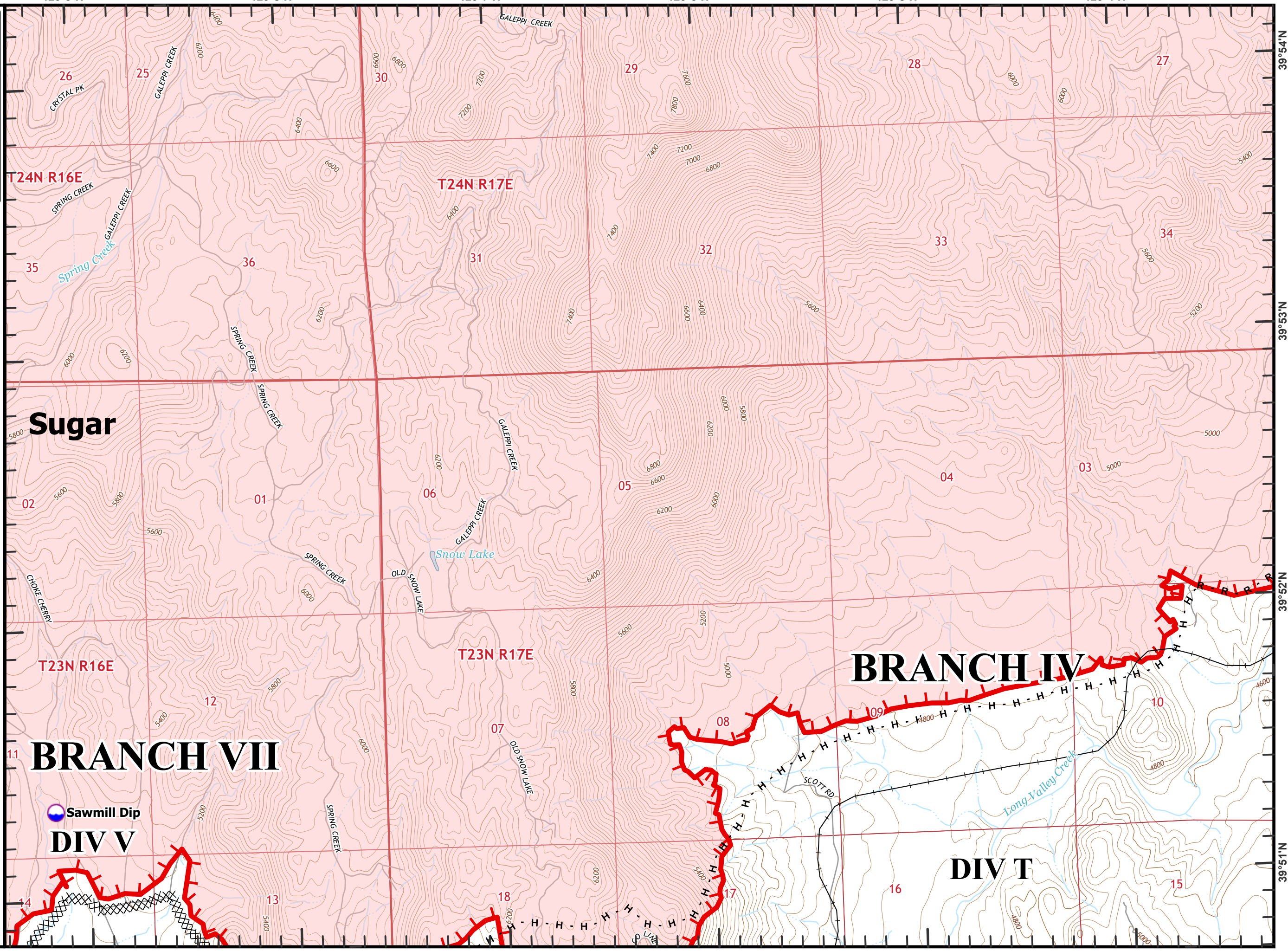


Beckworth Complex
CA-PNF-001064
NAD83, Zone 10
IAP Tiles
07/12/2021
Day Shift
Branch VII
Index Grid
G5

- ⊗ Completed Dozer Line
- H Completed Hand Line
- R Completed Road as Line
- 🌐 Dip Site
- 🔴 Fire Edge
- Railroad



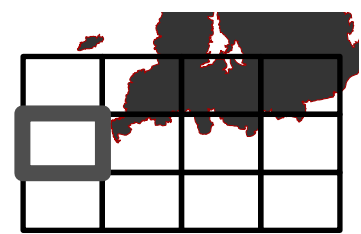
0 1/4 1/2
Miles



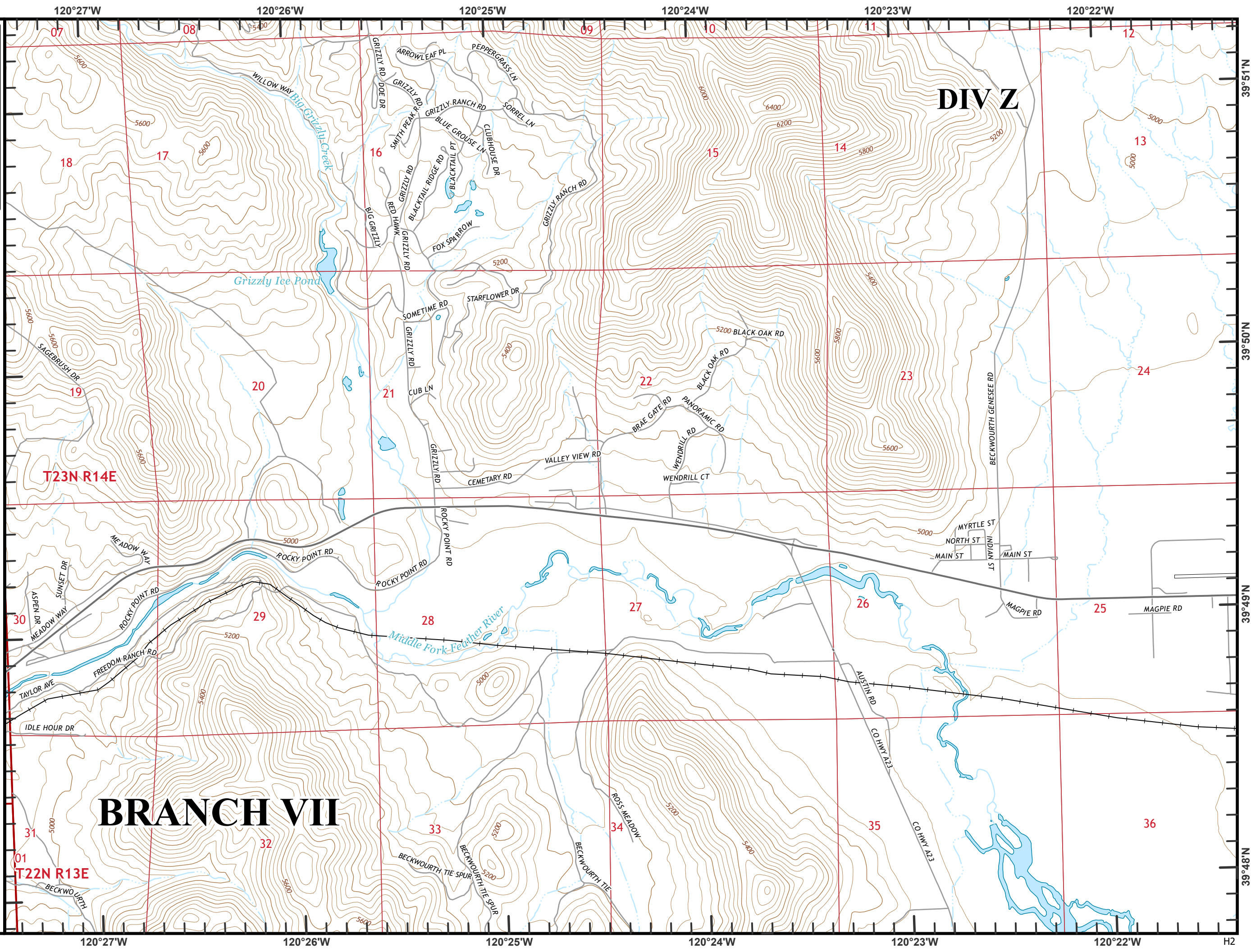
39°54'N
39°53'N
39°52'N
39°51'N
G5

Beckwourth Complex
CA-PNF-001064
NAD83, Zone 10
IAP Tiles
07/12/2021
Day Shift
Branch VII
Index Grid
H2

—+— Railroad



0 1/4 1/2
Miles



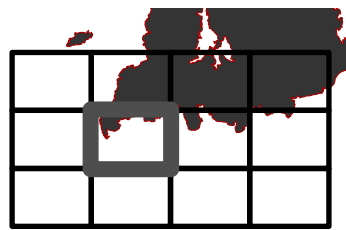
H2

Beckworth Complex
CA-PNF-001064
NAD83, Zone 10
IAP Tiles
07/12/2021
Day Shift
Branch VII
Index Grid
H3

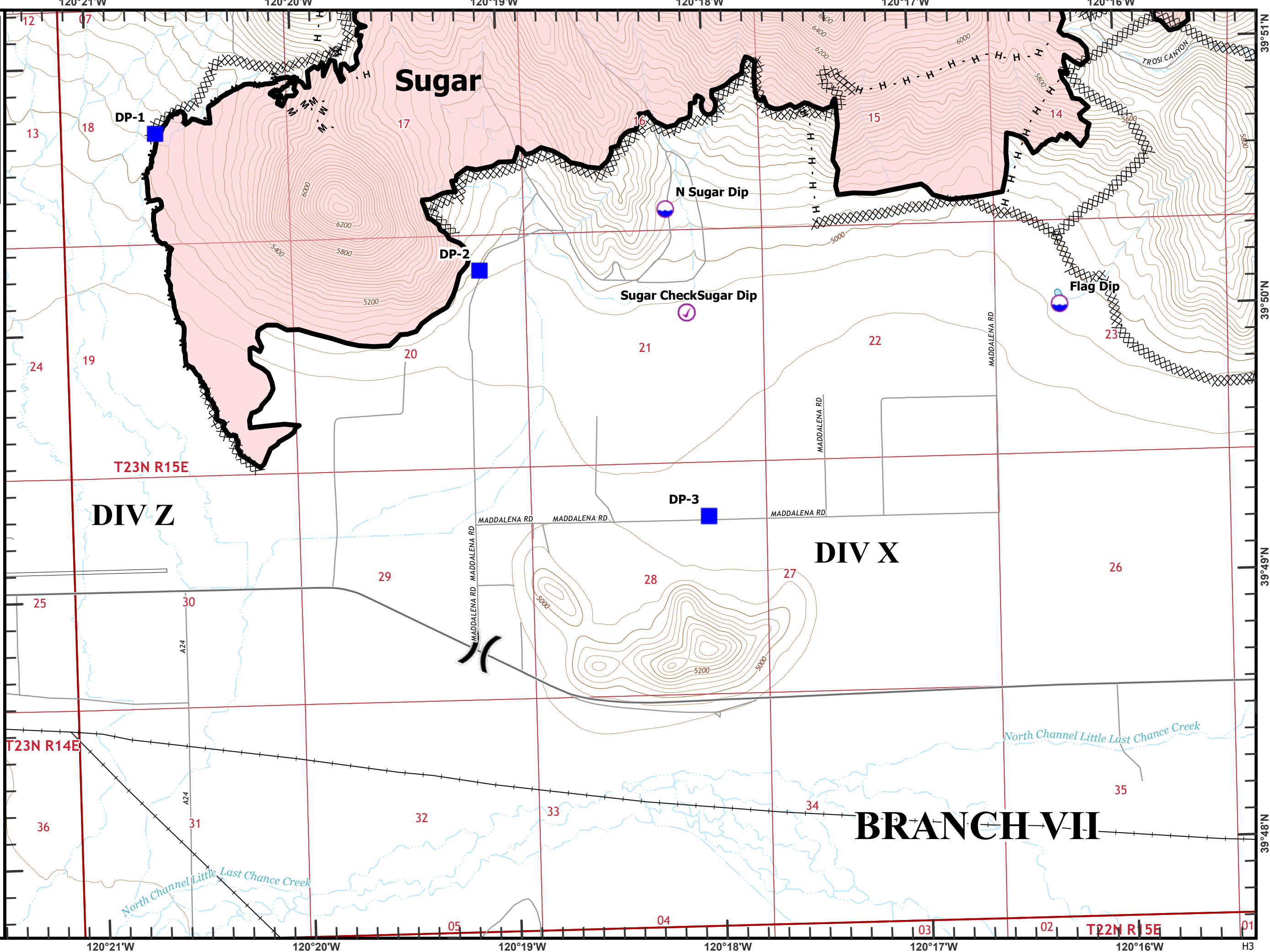
- ⊗ Completed Dozer Line
- H Completed Hand Line
- M Completed Mixed Construction Line



- ⊙ Check Point
- ⊙ Dip Site
- Drop Point
- ▬ Contained Line
- Railroad

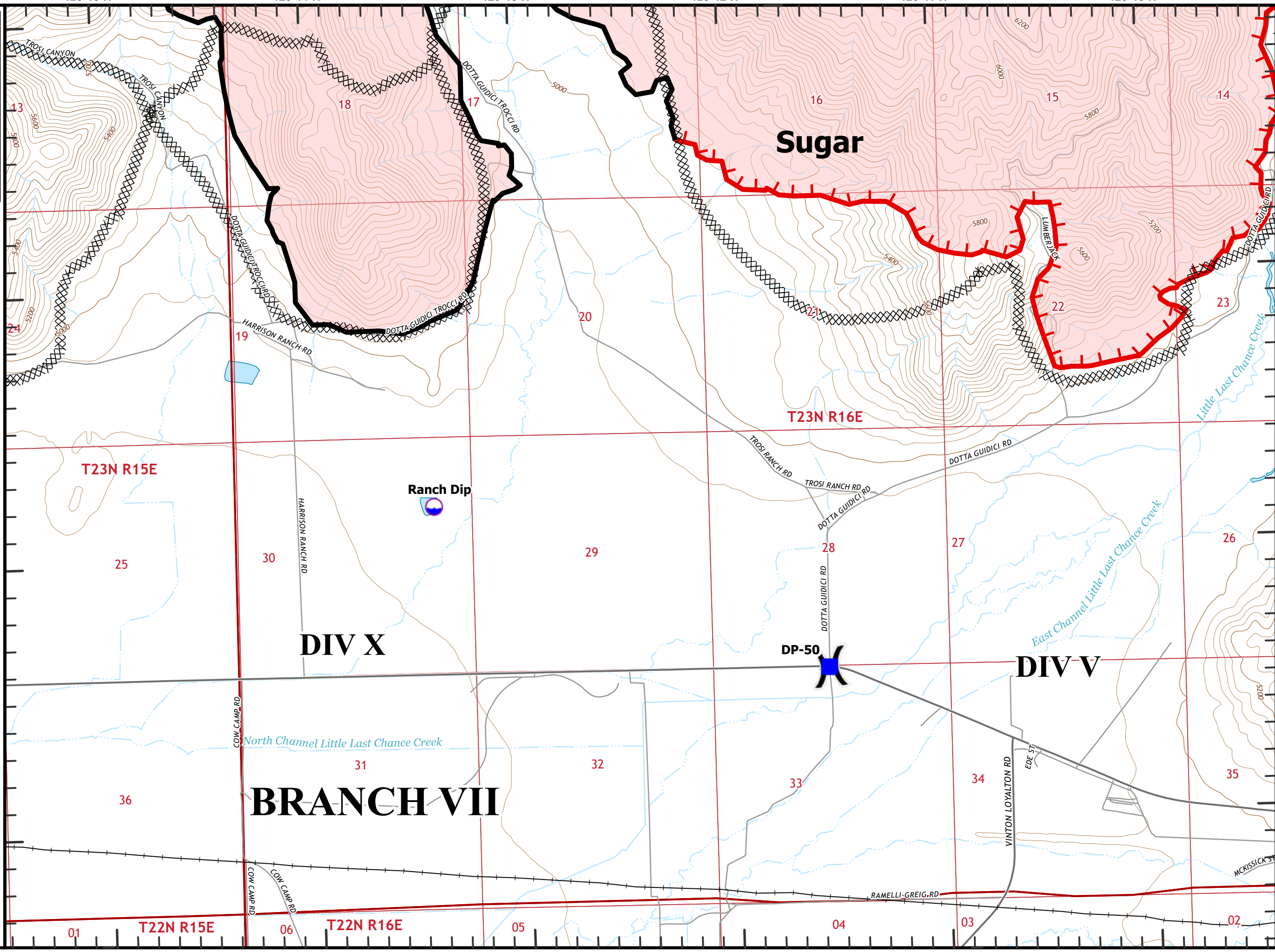
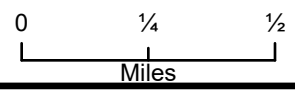
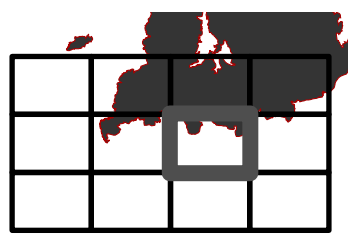


0 1/4 1/2
Miles



Beckworth Complex
CA-PNF-001064
NAD83, Zone 10
IAP Tiles
07/12/2021
Day Shift
Branch VII
Index Grid
H4

- ⊗ Completed Dozer Line
- ⎵ Division Break
- 📍 Dip Site
- 📍 Sling Site
- 📍 Drop Point
- 🔴 Fire Edge
- Contained Line
- + Railroad



T23N R15E

T23N R16E

DIV X

DIV V

BRANCH VII

T22N R15E

T22N R16E

120°15'W

120°14'W

120°13'W

120°12'W

120°11'W

120°10'W

H4

13

18

17

16

15

14

24

19

20

21

22

23

25

30

29

28

27

26

36

31

32

33

34

35

01

06

05

04

03





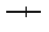
02

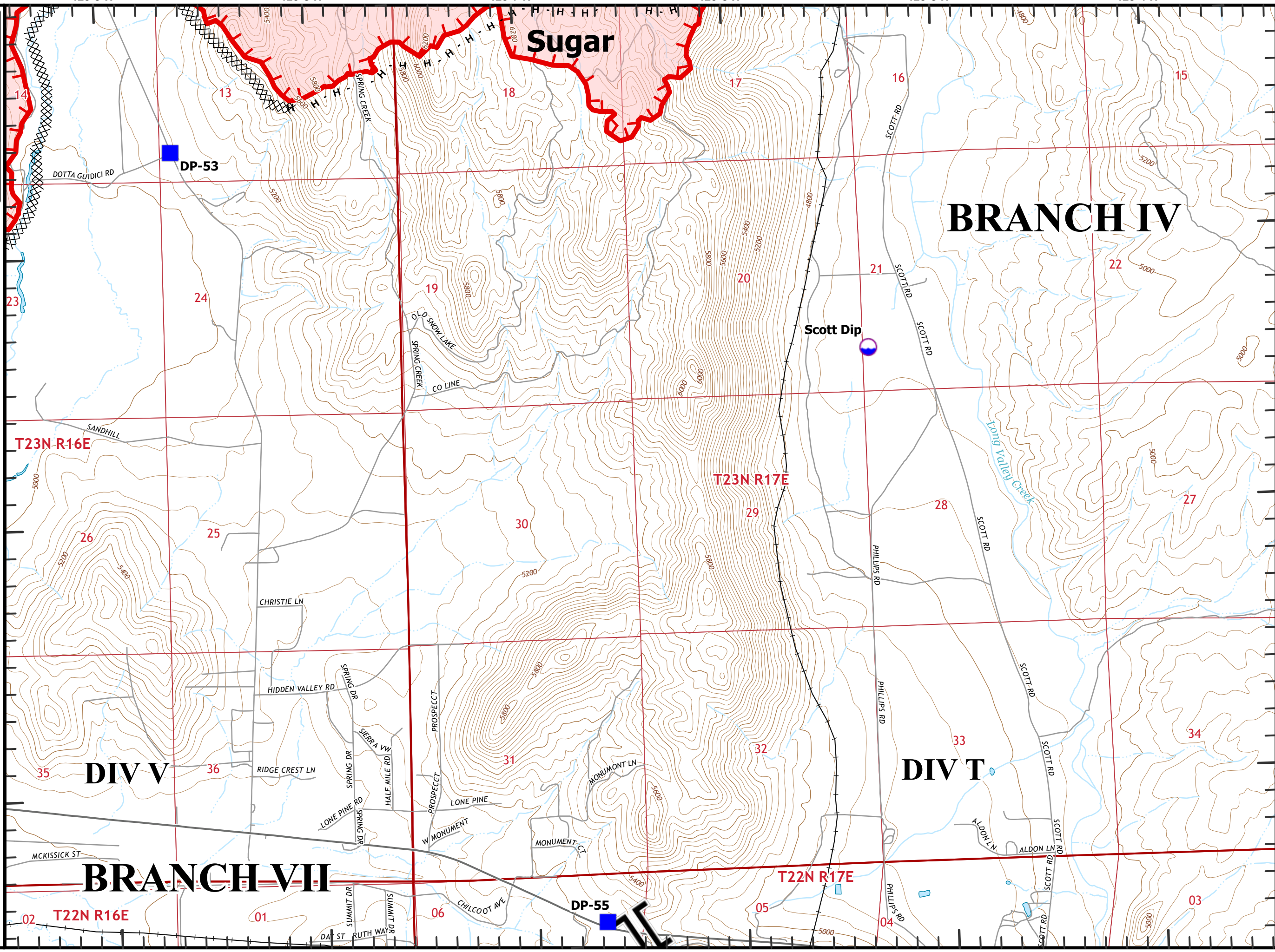
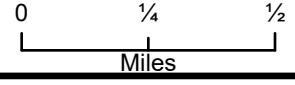
39°50'N

39°49'N

39°48'N

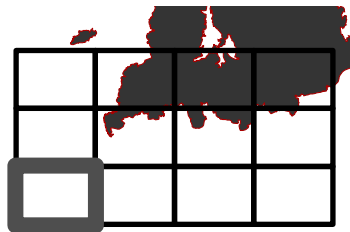
Beckworth Complex
 CA-PNF-001064
 NAD83, Zone 10
 IAP Tiles
 07/12/2021
 Day Shift
 Branch VII
 Index Grid
 H5

- ⊗ Completed Dozer Line
- H Completed Hand Line
-  Branch Break
-  Dip Site
-  Drop Point
-  Fire Edge
-  Railroad

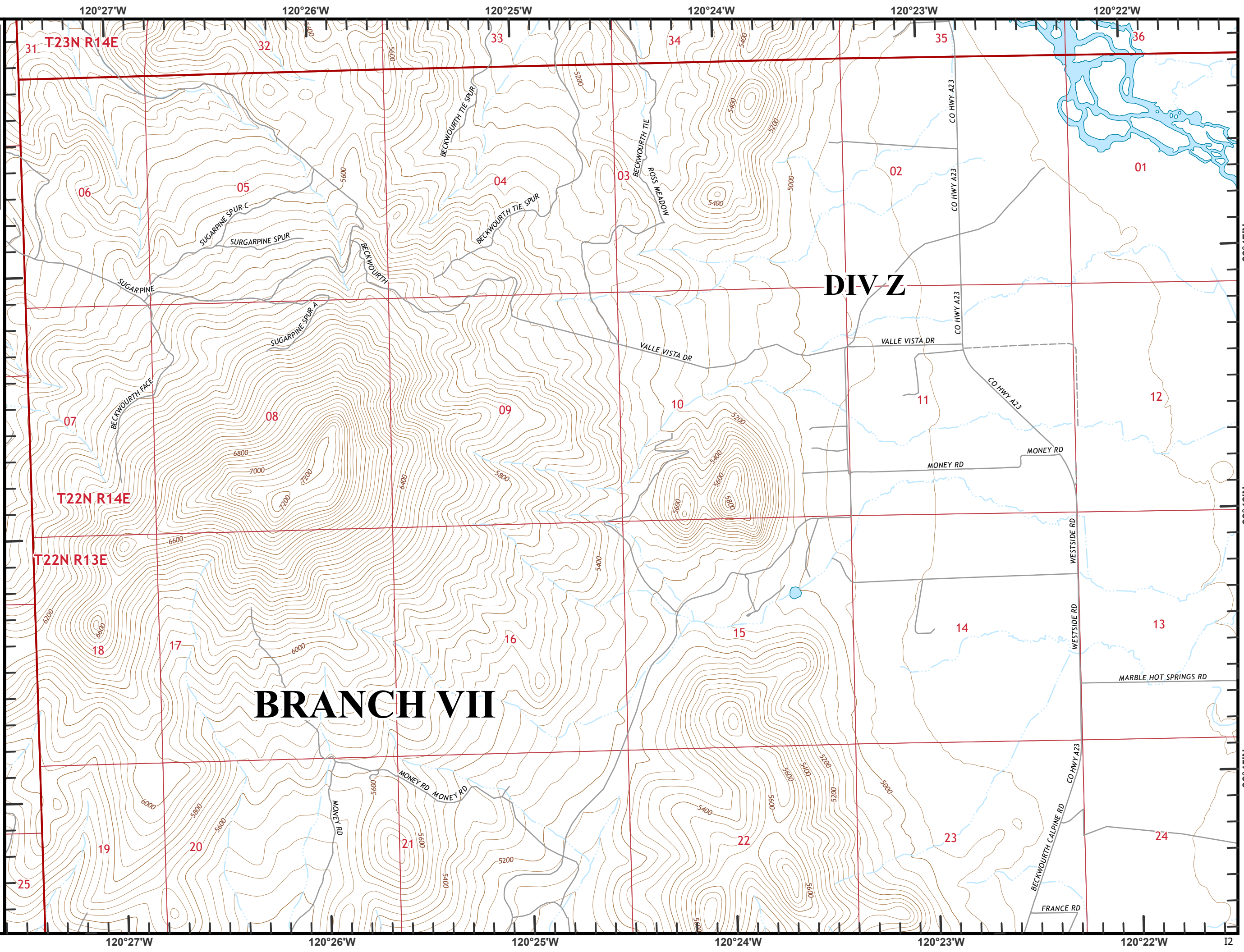


39°50'N
39°49'N
39°48'N
H5

Beckwourth Complex
CA-PNF-001064
NAD83, Zone 10
IAP Tiles
07/12/2021
Day Shift
Branch VII
Index Grid
I2

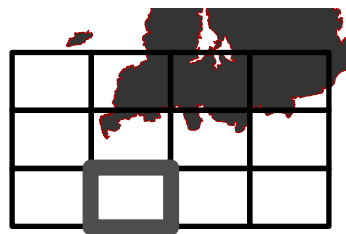


0 1/4 1/2
Miles

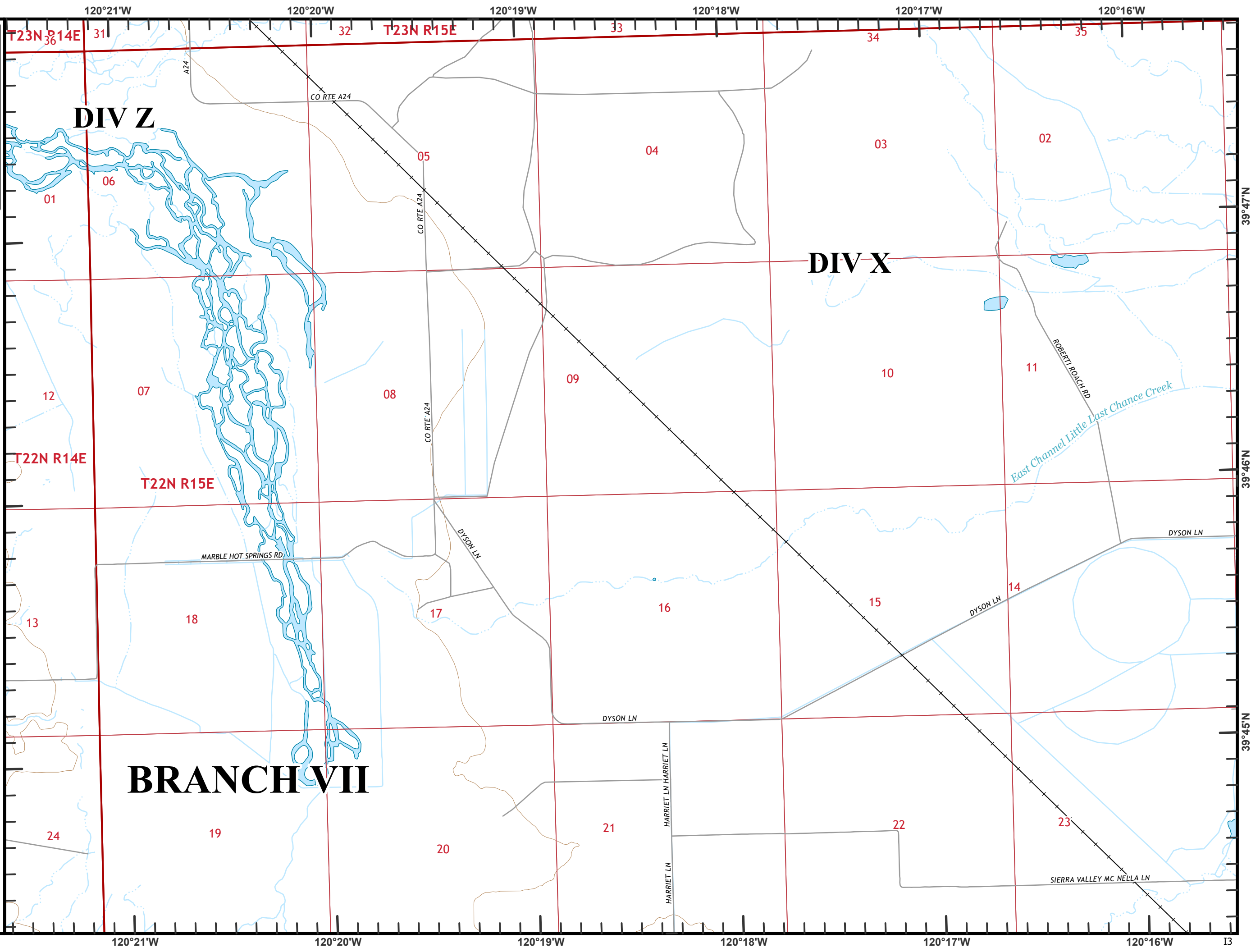


Beckwourth Complex
CA-PNF-001064
NAD83, Zone 10
IAP Tiles
07/12/2021
Day Shift
Branch VII
Index Grid
I3

—+— Railroad

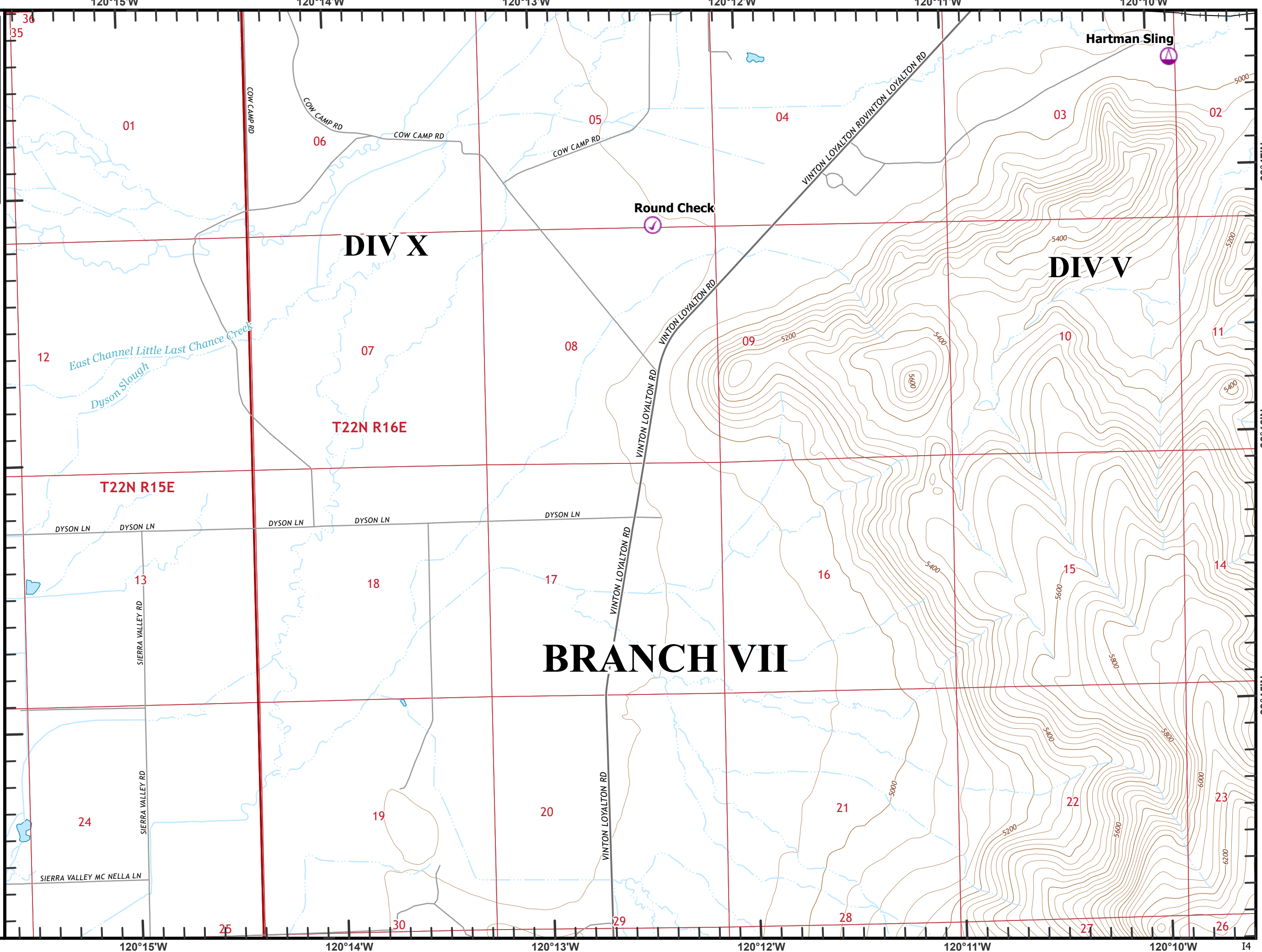
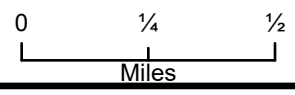
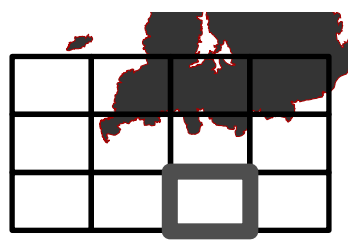


0 1/4 1/2
Miles



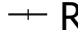


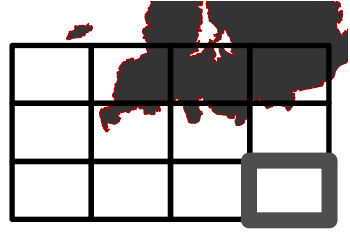
Beckworth Complex
CA-PNF-001064
NAD83, Zone 10
IAP Tiles
07/12/2021
Day Shift
Branch VII
Index Grid
I4

- 📍 Check Point
- 📍 Sling Site
- Railroad



Beckworth Complex
CA-PNF-001064
NAD83, Zone 10
IAP Tiles
07/12/2021
Day Shift
Branch VII
Index Grid
I5

-  Branch Break
-  Drop Point
-  Railroad



0 1/4 1/2
Miles

