

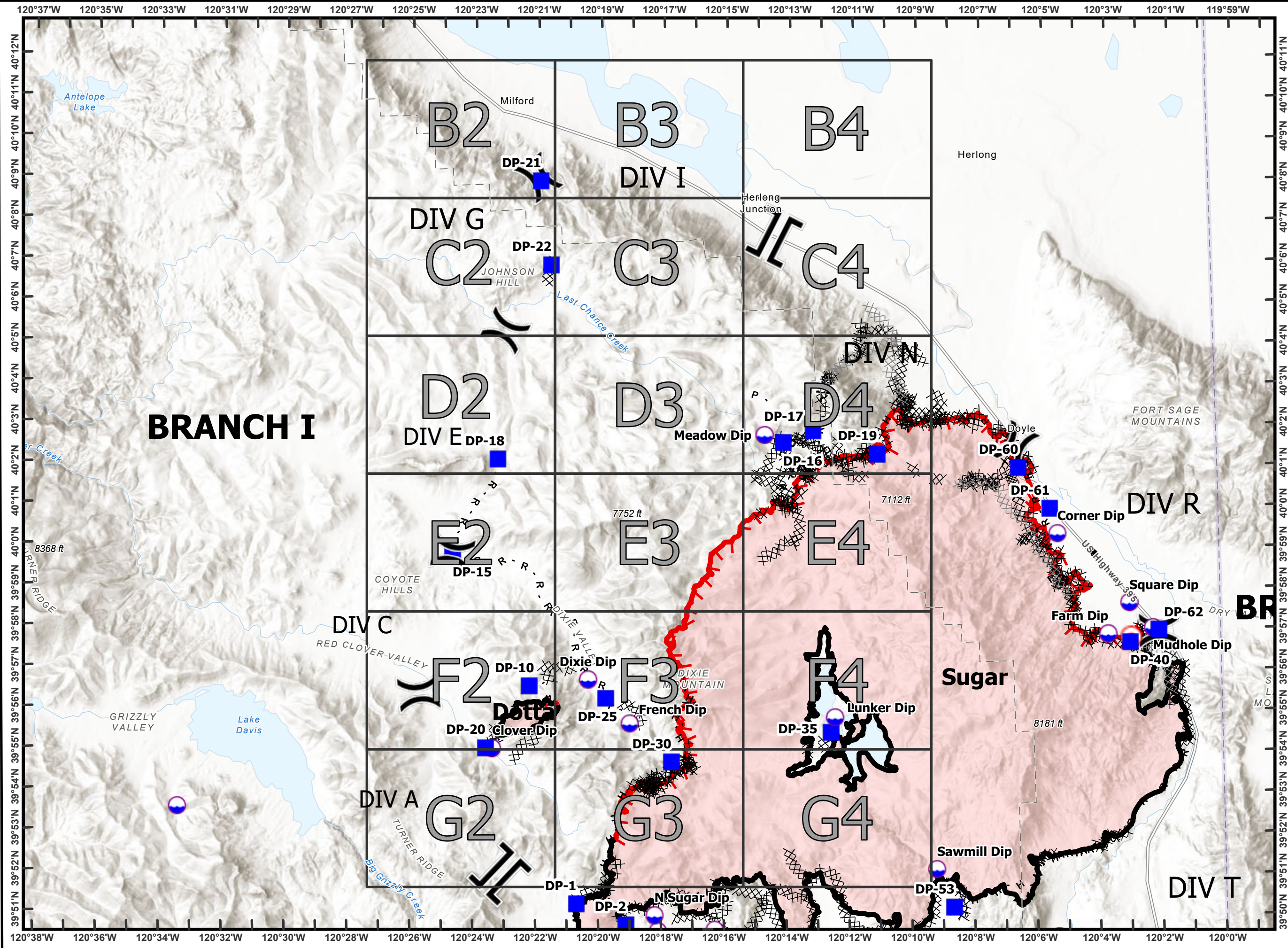
Beckworth Complex
CA-PNF-001064
NAD83, Zone 10
IAP Index
07/14/21
Day Shift
Branch I






- Division Break
- Branch Break
- Dip Site
- Drop Point
- Hot Spot - Spot Fire
- Completed Dozer Line
- Completed Hand Line
- Completed Mixed Construction Line
- Completed Plow Line
- Completed Road as Line
- Planned Dozer Line
- Planned Hand Line
- Fire Edge
- Contained Line

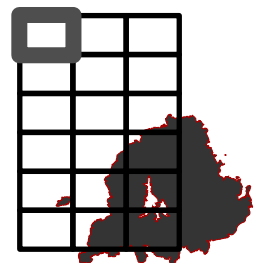


0 1.75 3.5
Miles

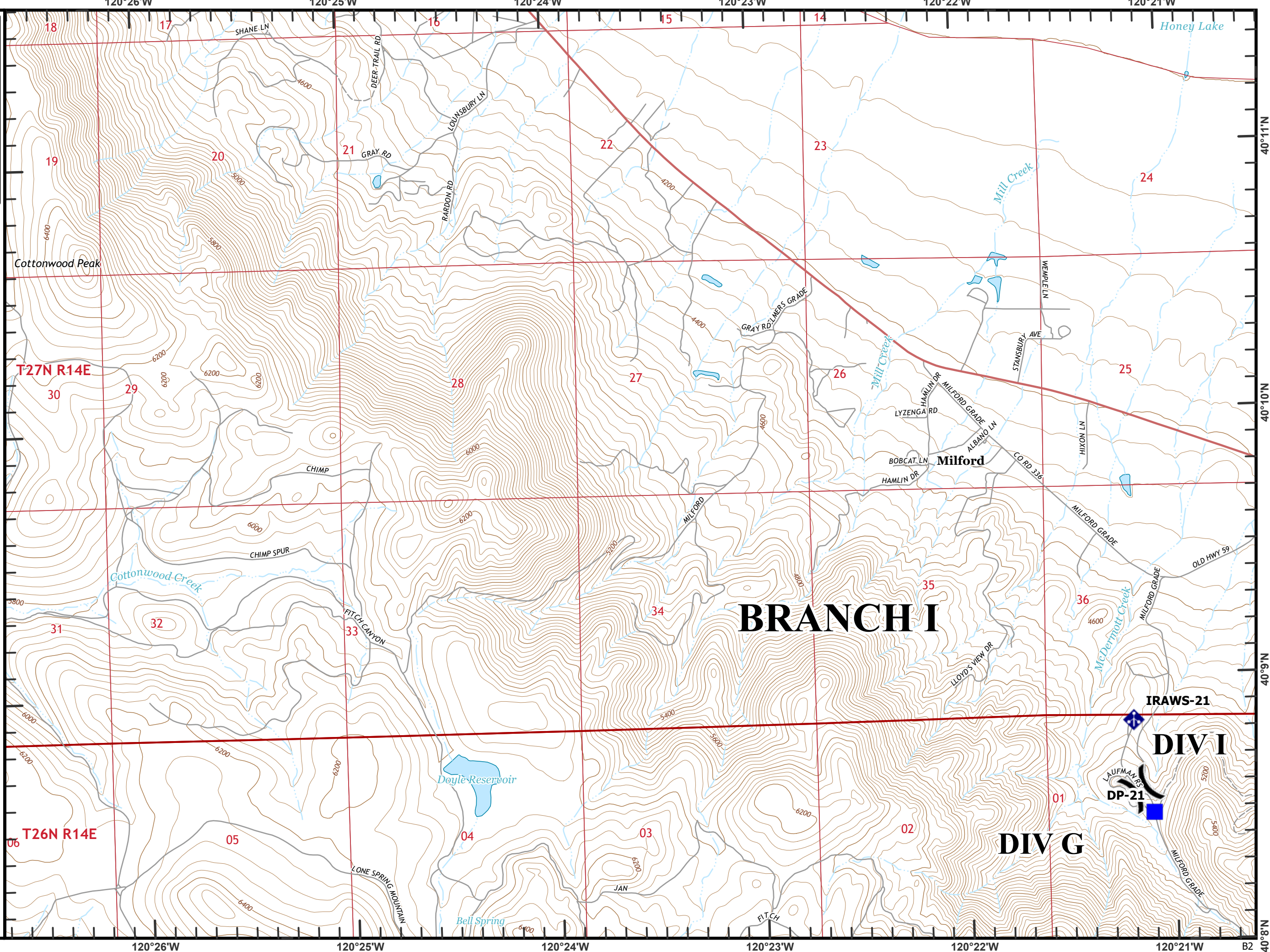


Beckworth Complex
CA-PNF-001064
NAD83, Zone 10
IAP Tiles
07/14/2021
Day Shift
Branch I
Index Grid
B2

-  Division Break
-  Drop Point
-  Mobile Weather Unit



0 1/4 1/2
Miles



BRANCH I

DIV I

DIV G

DP-21

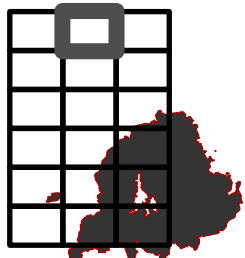
IRAWS-21

T27N R14E

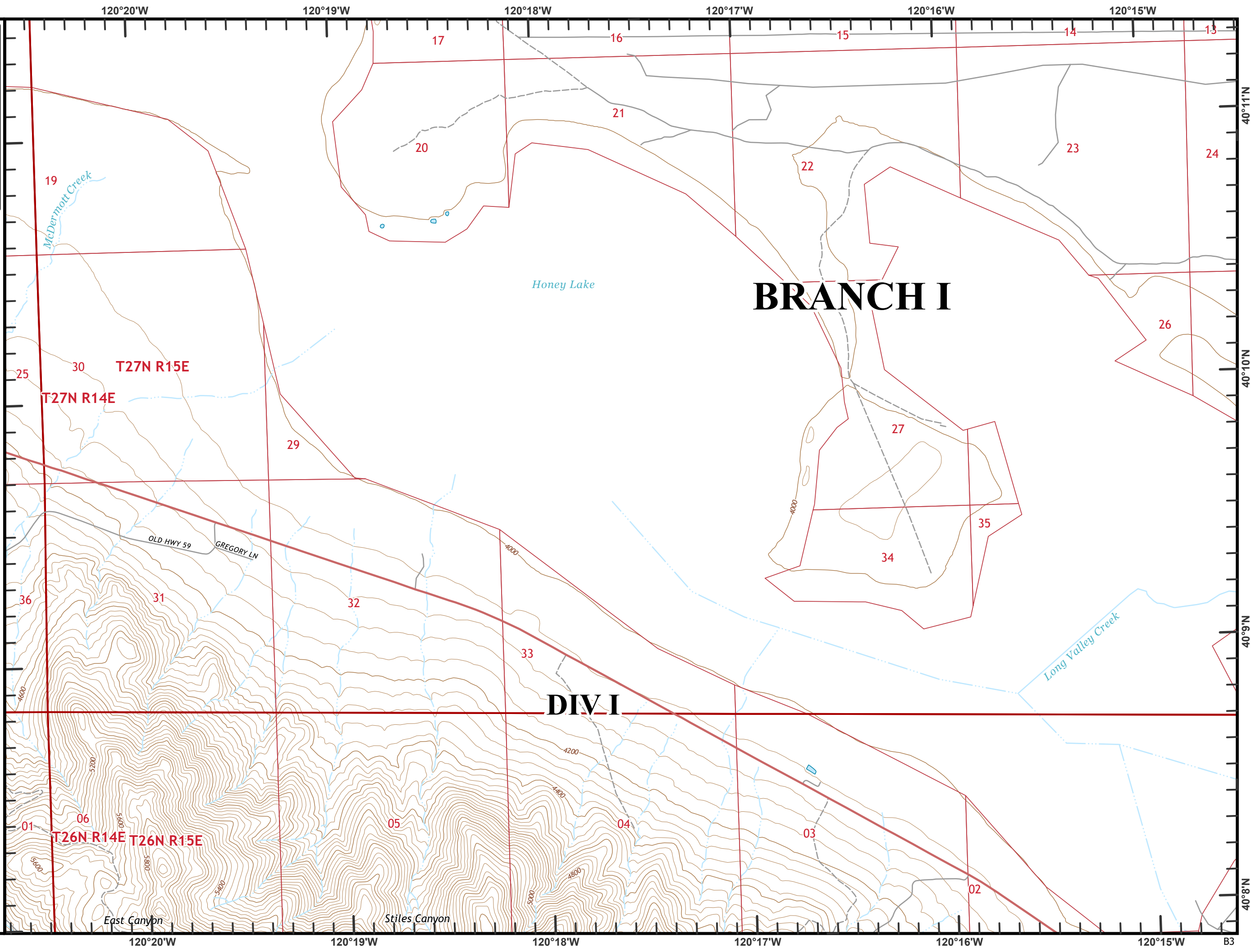
T26N R14E

B2

Beckwourth Complex
CA-PNF-001064
NAD83, Zone 10
IAP Tiles
07/14/2021
Day Shift
Branch I
Index Grid
B3



0 1/4 1/2
Miles



19
McDermott Creek

Honey Lake

BRANCH I

25 30 T27N R15E
T27N R14E

OLD HWY 59
GREGORY LN

36 31 32

DIV I

01 06 T26N R14E T26N R15E

East Canyon

Stiles Canyon

Long Valley Creek

40°11'N
40°10'N
40°9'N
40°8'N

120°20'W 120°19'W 120°18'W 120°17'W 120°16'W 120°15'W B3

Beckworth Complex
CA-PNF-001064
NAD83, Zone 10
IAP Tiles
07/14/2021
Day Shift
Branch I
Index Grid
B4

— Railroad

BRANCH I

T27N R15E

T27N R16E
30

DIV I

36

31

32

33

34

35

BRANCH IV

Patton Village

DIV N

06 T26N R16E

T26N R15E

01

Long Valley Creek

DESERT VW

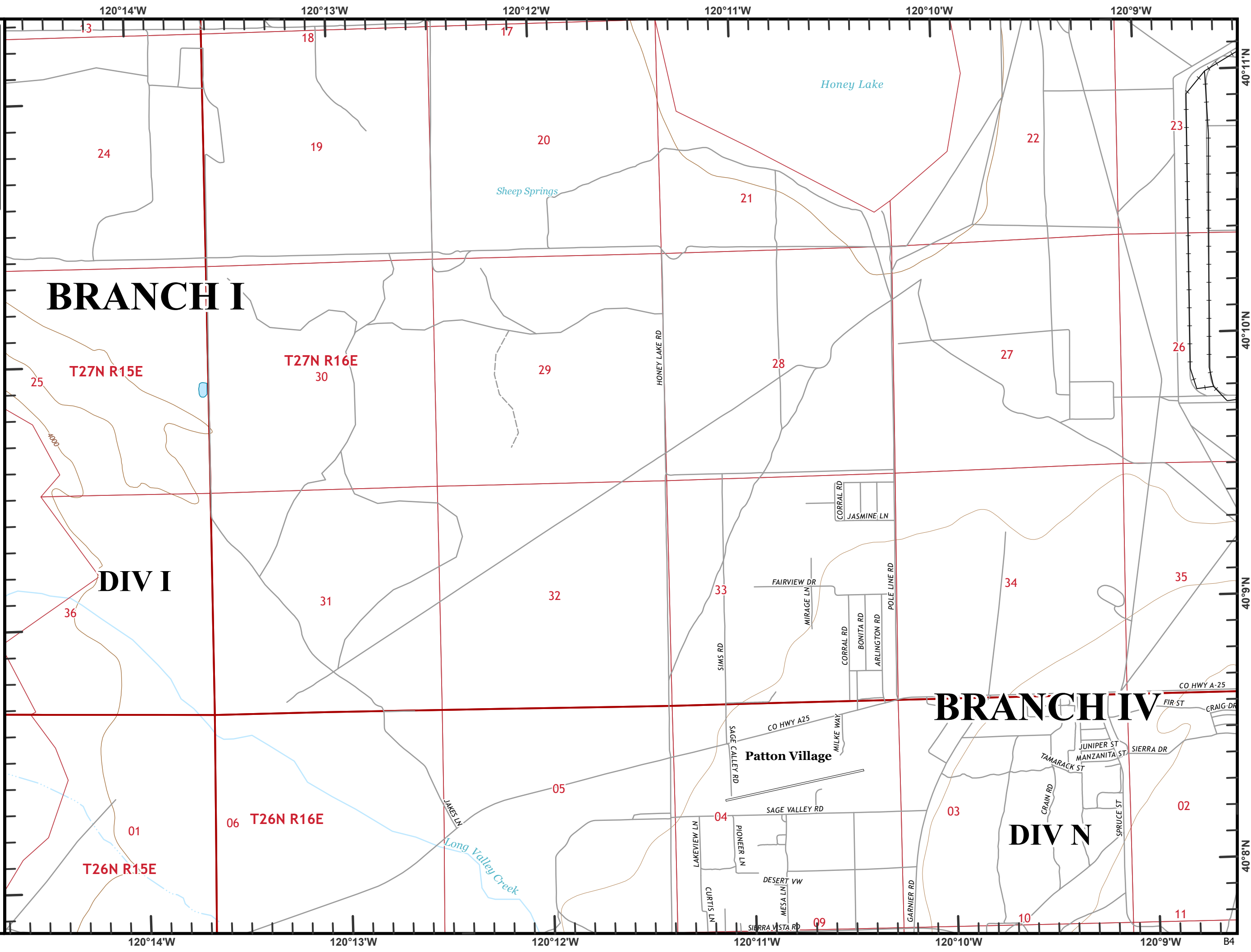
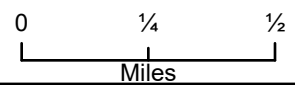
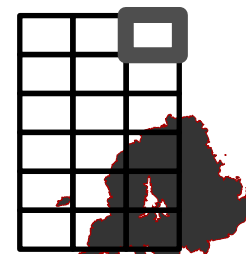
03

02

09

10

11

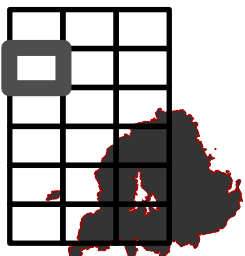


Beckworth Complex
CA-PNF-001064
NAD83, Zone 10
IAP Tiles
07/14/2021
Day Shift
Branch I
Index Grid
C2

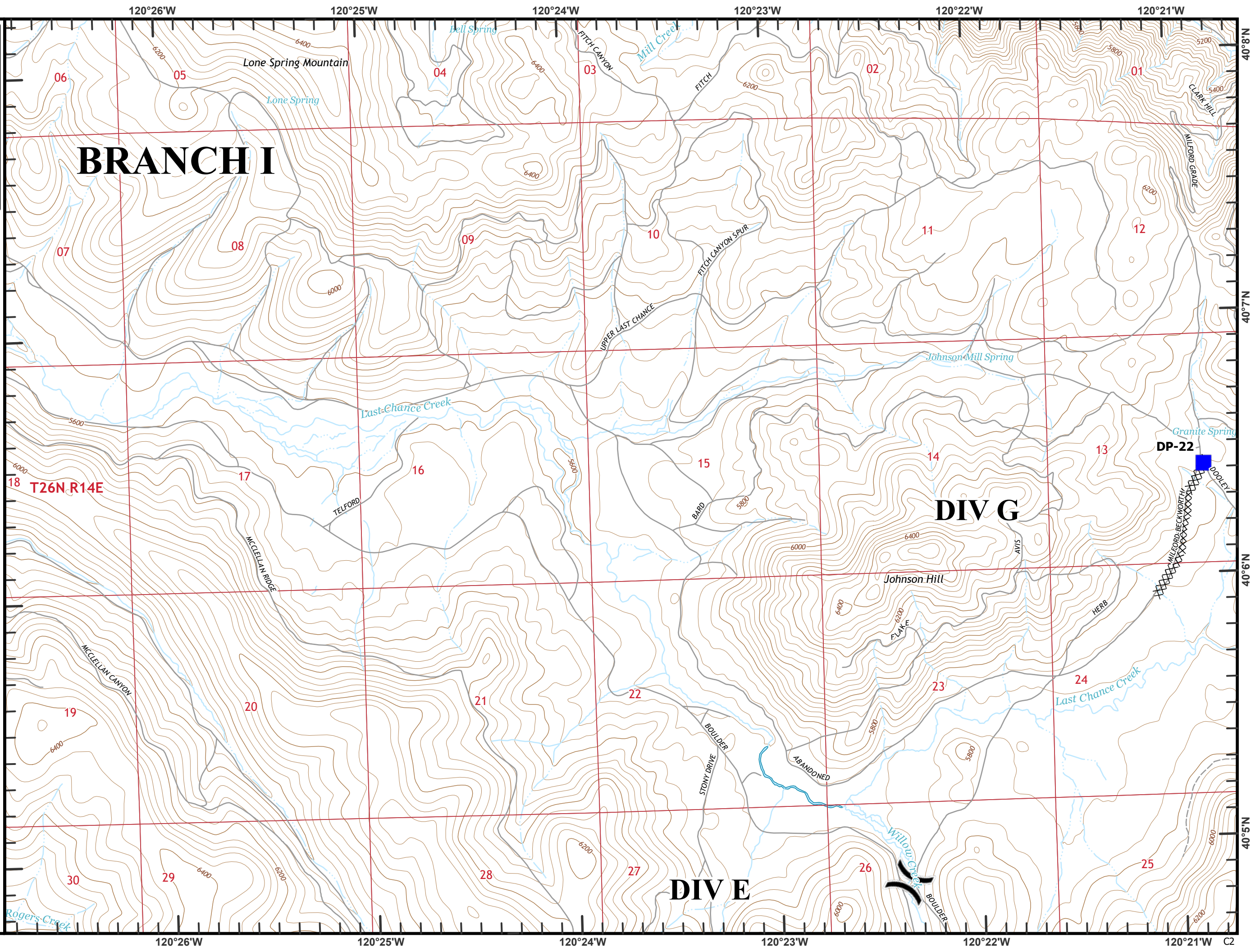
⊗ Completed Dozer Line

⎵ Division Break

■ Drop Point



0 1/4 1/2
Miles



BRANCH I

DIV G

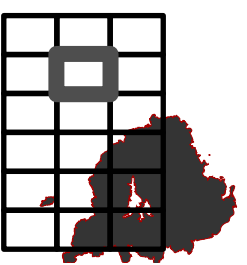
DIV E

18 T26N R14E

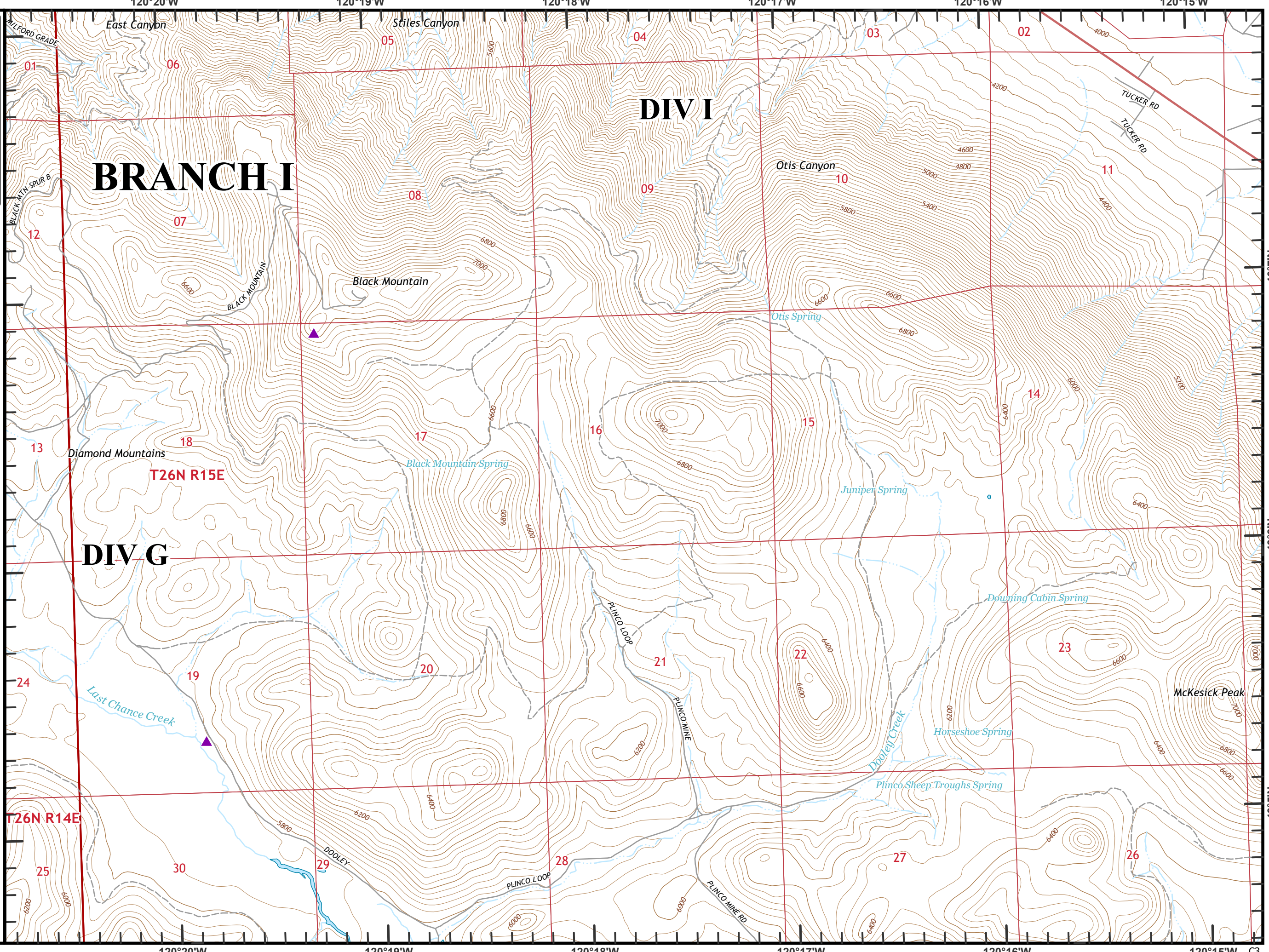
C2

Beckworth Complex
CA-PNF-001064
NAD83, Zone 10
IAP Tiles
07/14/2021
Day Shift
Branch I
Index Grid
C3

■ Drop Point
▲ Sensitive Areas



0 1/4 1/2
Miles



40°7'N
40°6'N
40°5'N

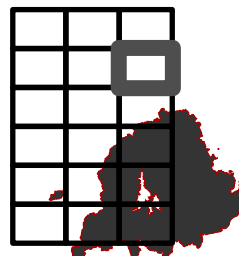
120°20'W 120°19'W 120°18'W 120°17'W 120°16'W 120°15'W C3

Beckworth Complex
CA-PNF-001064
NAD83, Zone 10
IAP Tiles
07/14/2021
Day Shift
Branch I
Index Grid
C4

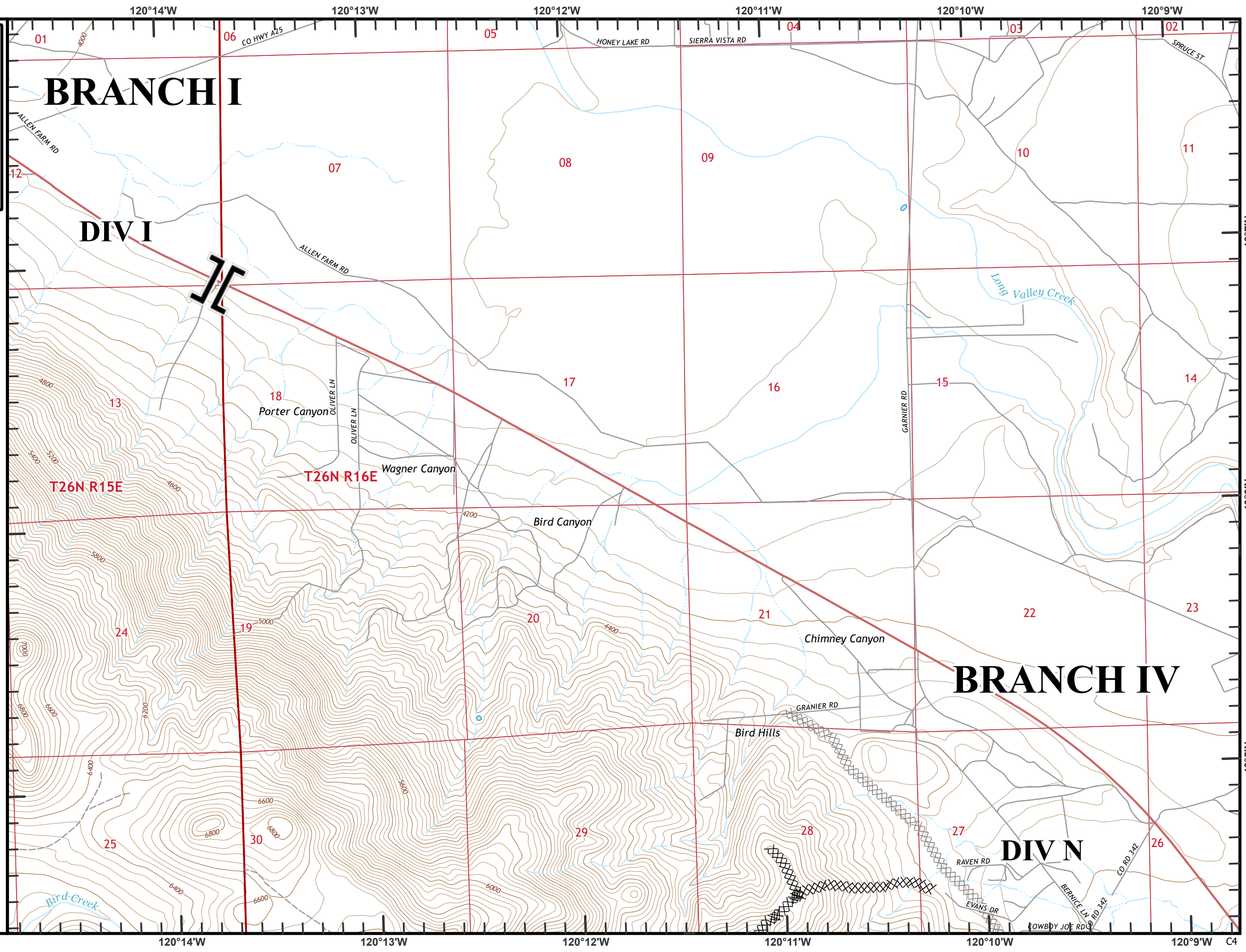
- ⊗ Completed Dozer Line
- ⊗ Planned Dozer Line



Branch Break



0 1/4 1/2
Miles

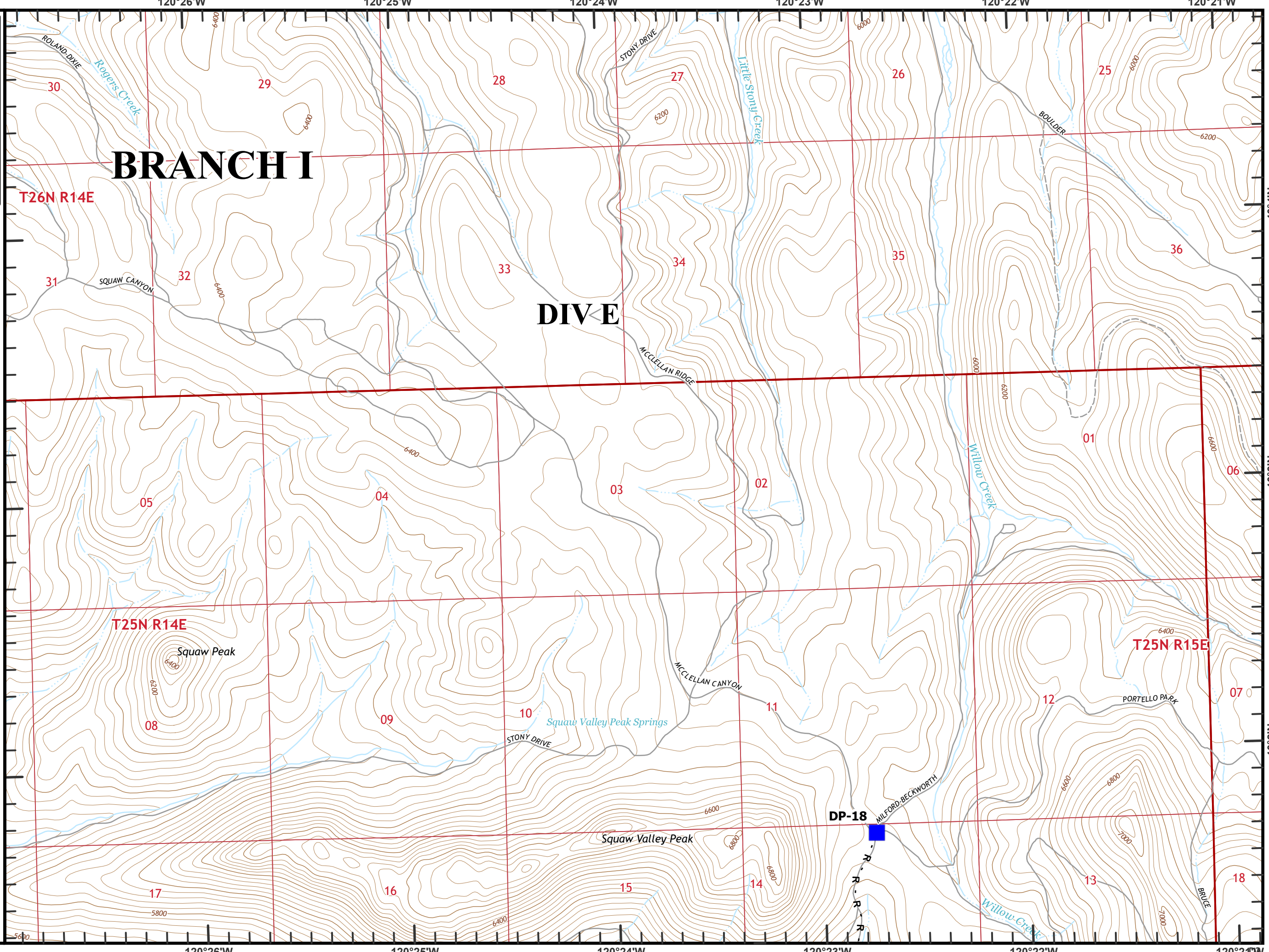
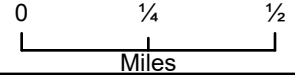
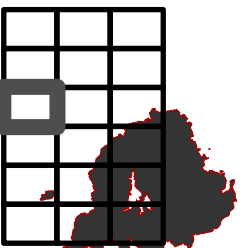


Beckworth Complex
CA-PNF-001064
NAD83, Zone 10
IAP Tiles
07/14/2021
Day Shift
Branch I
Index Grid
D2

R Completed Road as Line



Drop Point



BRANCH I

DIVE

T25N R14E

T25N R15E

DP-18

120°26'W

120°25'W

120°24'W

120°23'W

120°22'W

120°21'W

40°4'N

40°3'N

40°2'N

17

16

15

14

13

18

08

09

10

11

12

07

05

04

03

02

01

06

31

32

33

34

35

36

30

29

28

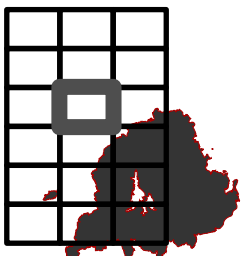
27

26

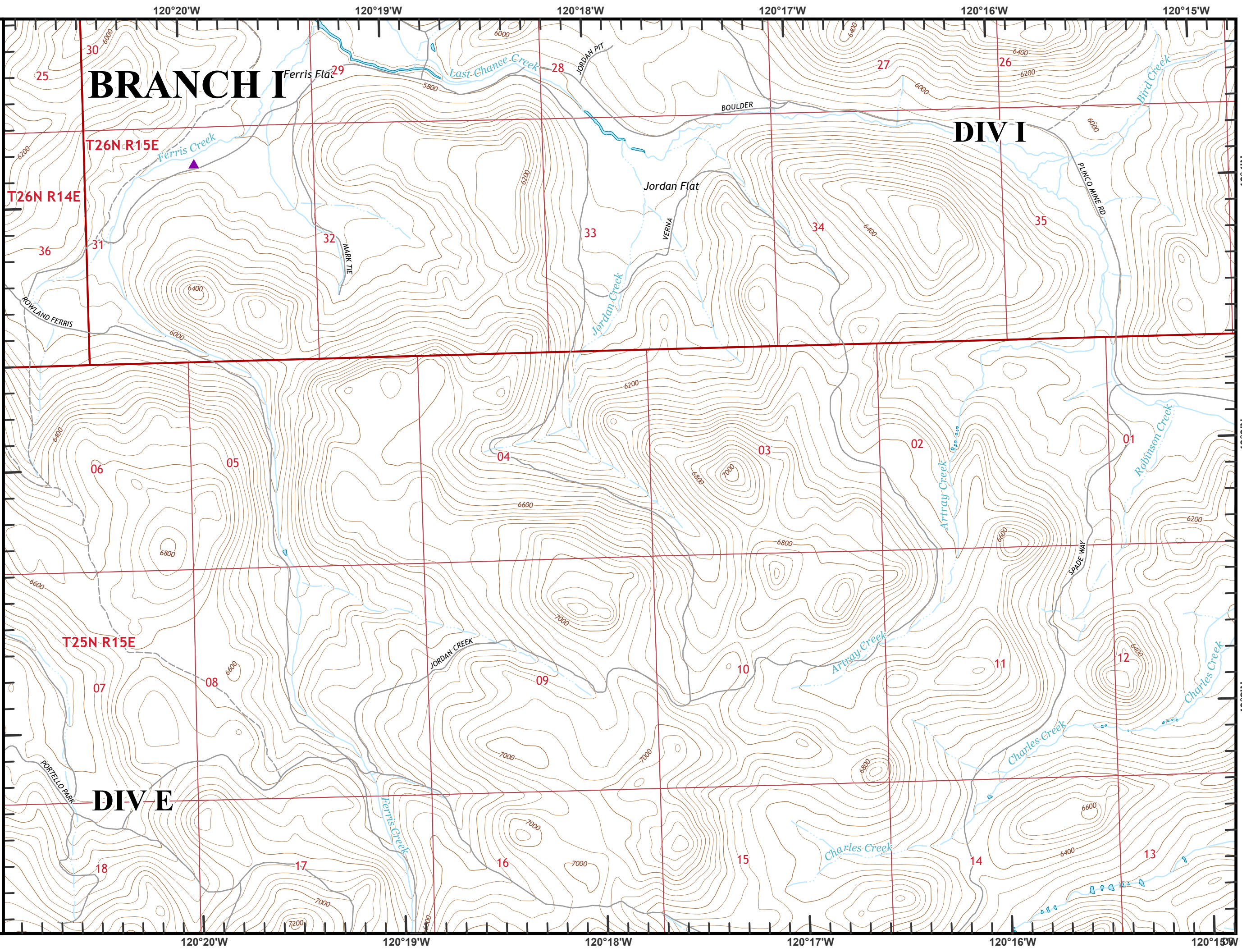
25

Beckwourth Complex
CA-PNF-001064
NAD83, Zone 10
IAP Tiles
07/14/2021
Day Shift
Branch I
Index Grid
D3

▲ Sensitive Areas

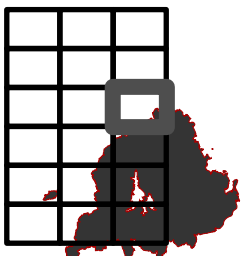


0 1/4 1/2
Miles

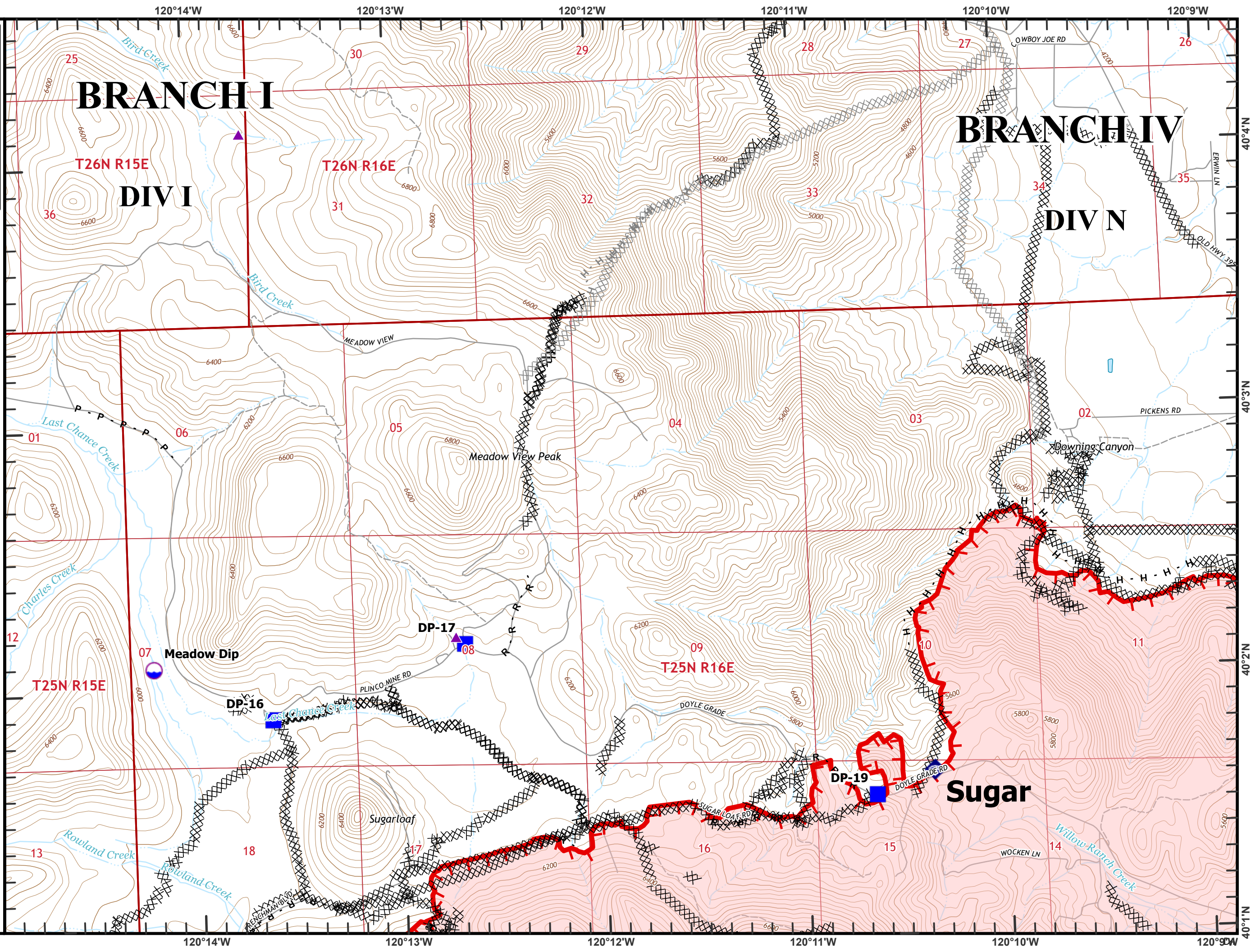


Beckworth Complex
CA-PNF-001064
NAD83, Zone 10
IAP Tiles
07/14/2021
Day Shift
Branch I
Index Grid
D4

- ⊗ Completed Dozer Line
- H Completed Hand Line
- P Completed Plow Line
- R Completed Road as Line
- ⊗ Planned Dozer Line
- H Planned Hand Line
- 📶 Dip Site
- 📍 Drop Point
- 📶 Internet Access
- 🔥 Fire Edge
- ▲ Sensitive Areas



0 1/4 1/2
 Miles

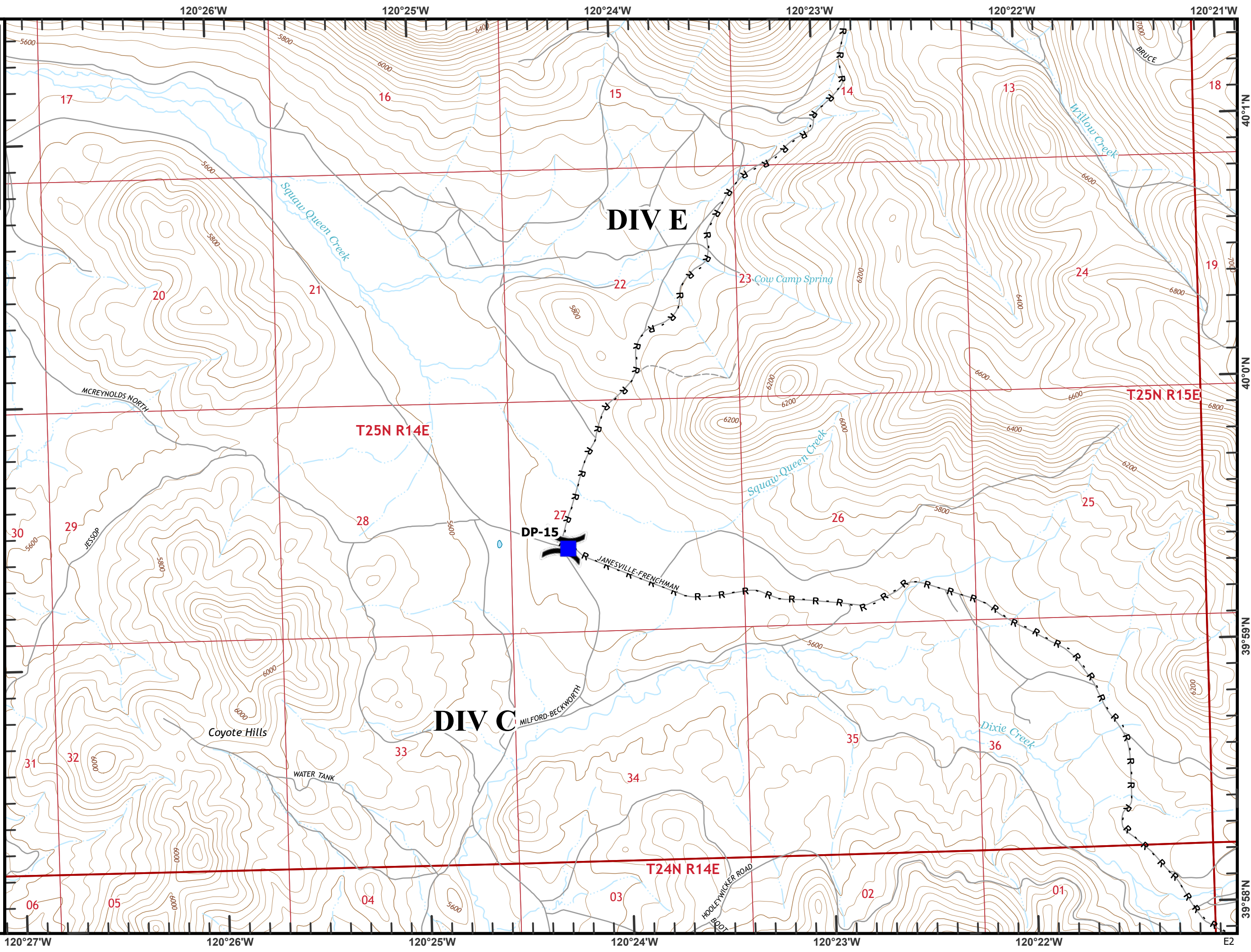
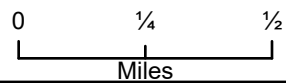
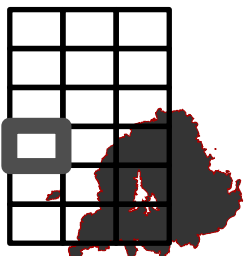


Beckworth Complex
CA-PNF-001064
NAD83, Zone 10
IAP Tiles
07/14/2021
Day Shift
Branch I
Index Grid
E2

R Completed Road as Line



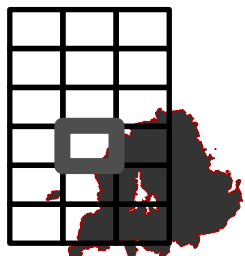
Drop Point



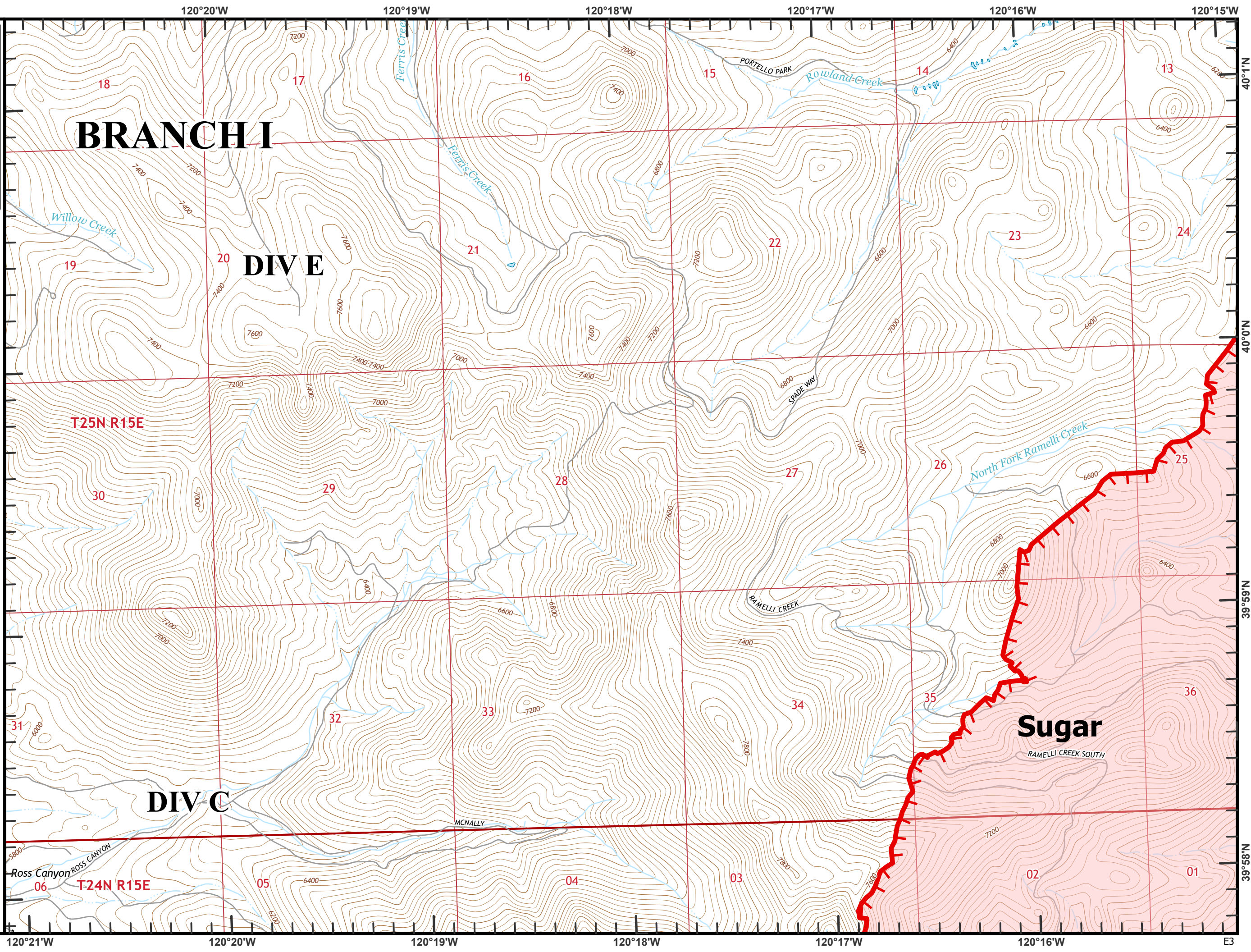
120°27'W 120°26'W 120°25'W 120°24'W 120°23'W 120°22'W 120°21'W
39°58'N 39°59'N 40°0'N 40°1'N
E2

Beckworth Complex
CA-PNF-001064
NAD83, Zone 10
IAP Tiles
07/14/2021
Day Shift
Branch I
Index Grid
E3

R Completed Road as Line
Fire Edge

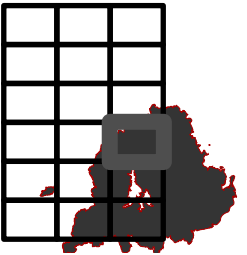


0 1/4 1/2
Miles

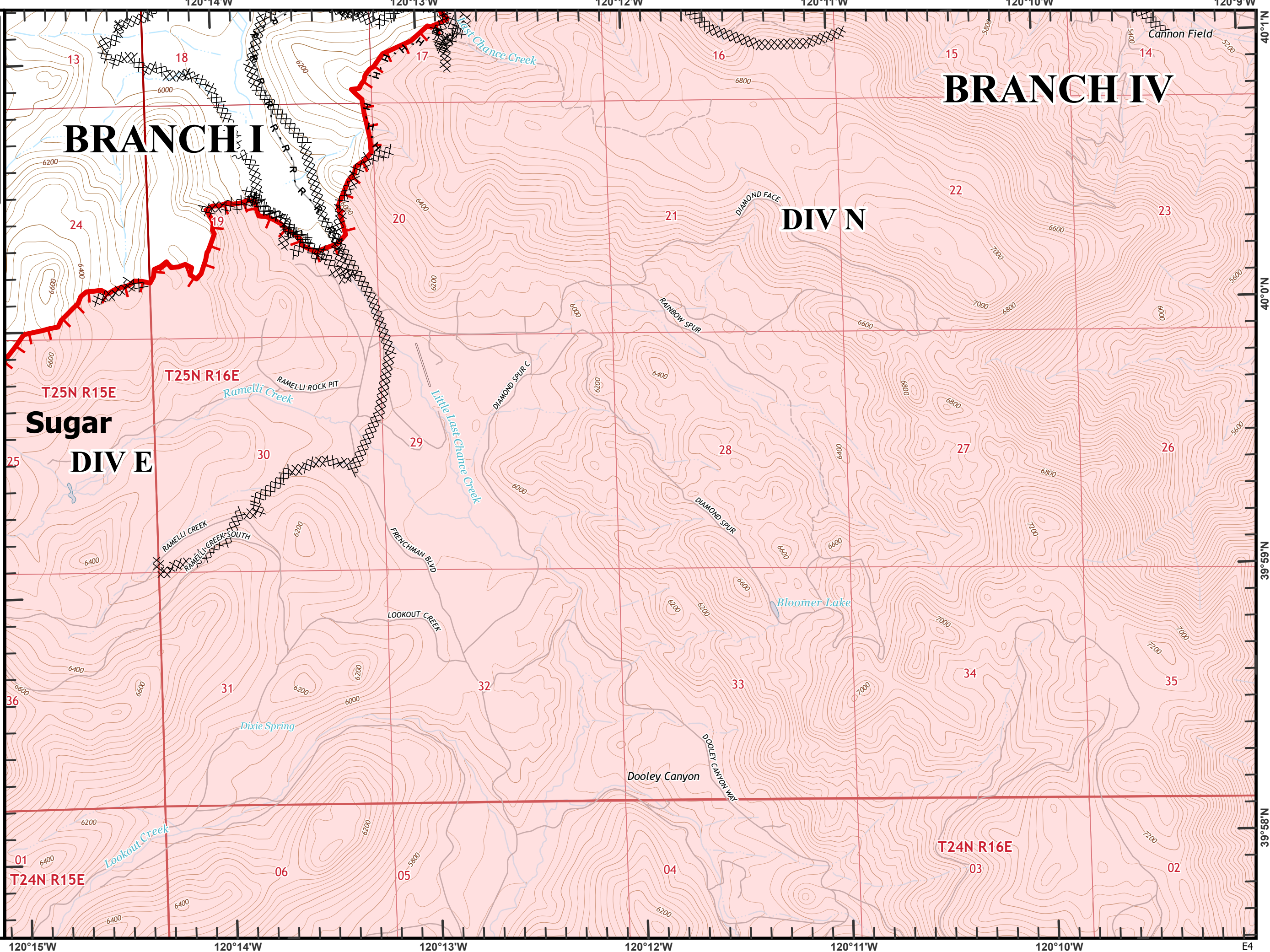


Beckworth Complex
 CA-PNF-001064
 NAD83, Zone 10
 IAP Tiles
 07/14/2021
 Day Shift
 Branch I
 Index Grid
 E4








- ⊗ Completed Dozer Line
- H Completed Hand Line
- R Completed Road as Line
- ▬ Fire Edge

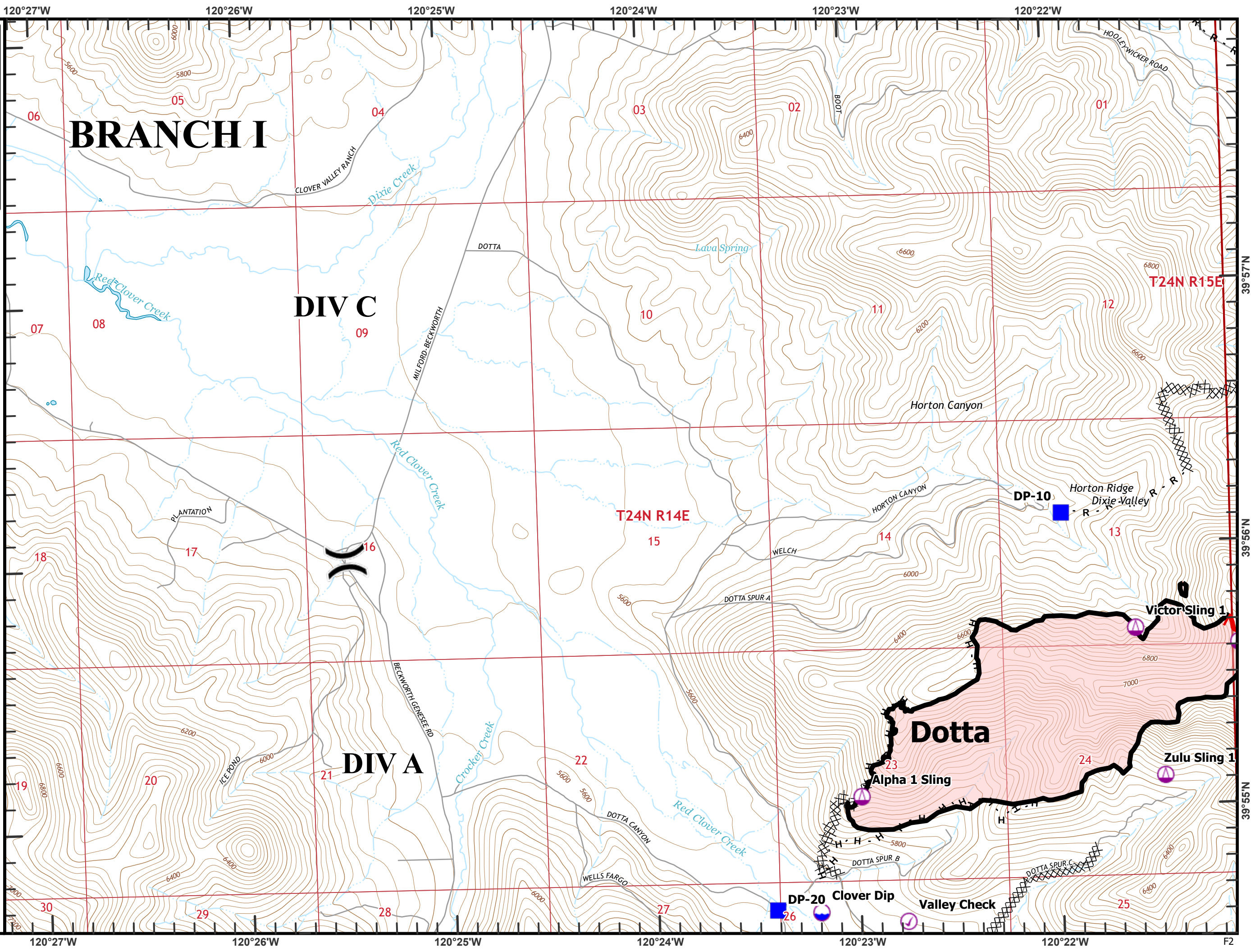
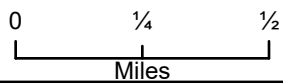
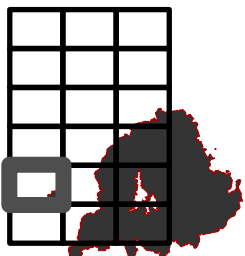


0 1/4 1/2
 Miles



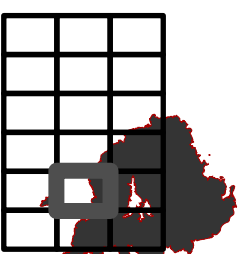
Beckworth Complex
CA-PNF-001064
NAD83, Zone 10
IAP Tiles
07/14/2021
Day Shift
Branch I
Index Grid
F2

- ⊗ Completed Dozer Line
- H Completed Hand Line
- R Completed Road as Line
-  Division Break
-  Check Point
-  Dip Site
-  Sling Site
-  Drop Point
-  Fire Edge
-  Contained Line

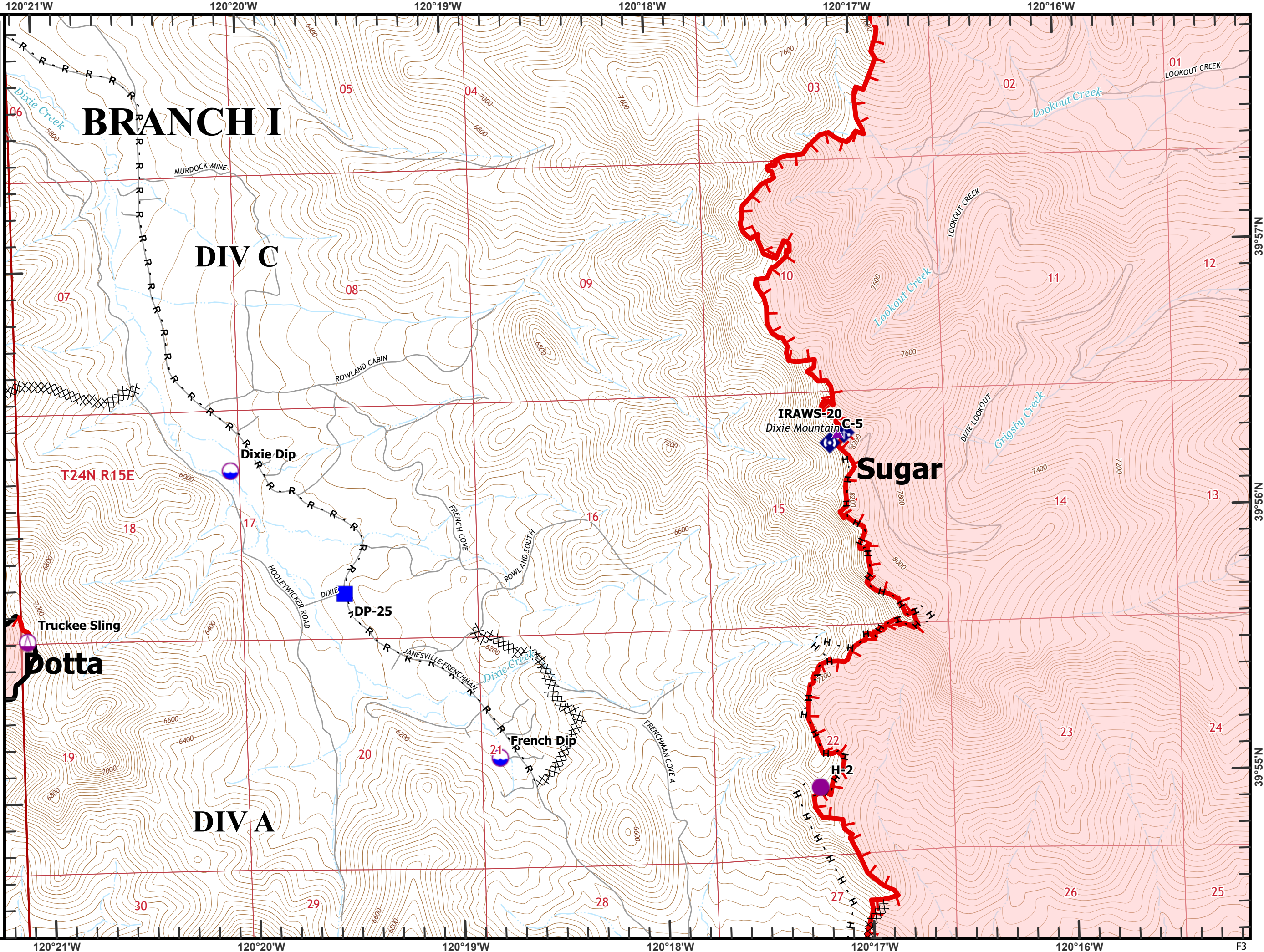


Beckworth Complex
CA-PNF-001064
NAD83, Zone 10
IAP Tiles
07/14/2021
Day Shift
Branch I
Index Grid
F3

- ⊗ Completed Dozer Line
- H Completed Hand Line
- R Completed Road as Line
- 📍 Dip Site
- 📍 Helispot
- 📍 Sling Site
- 📍 Drop Point
- 📍 Mobile Weather Unit
- 📍 Repeater
- 🔴 Fire Edge
- ▬ Contained Line
- ▲ Sensitive Areas

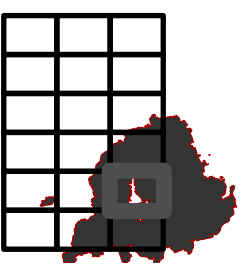


0 1/4 1/2 Miles

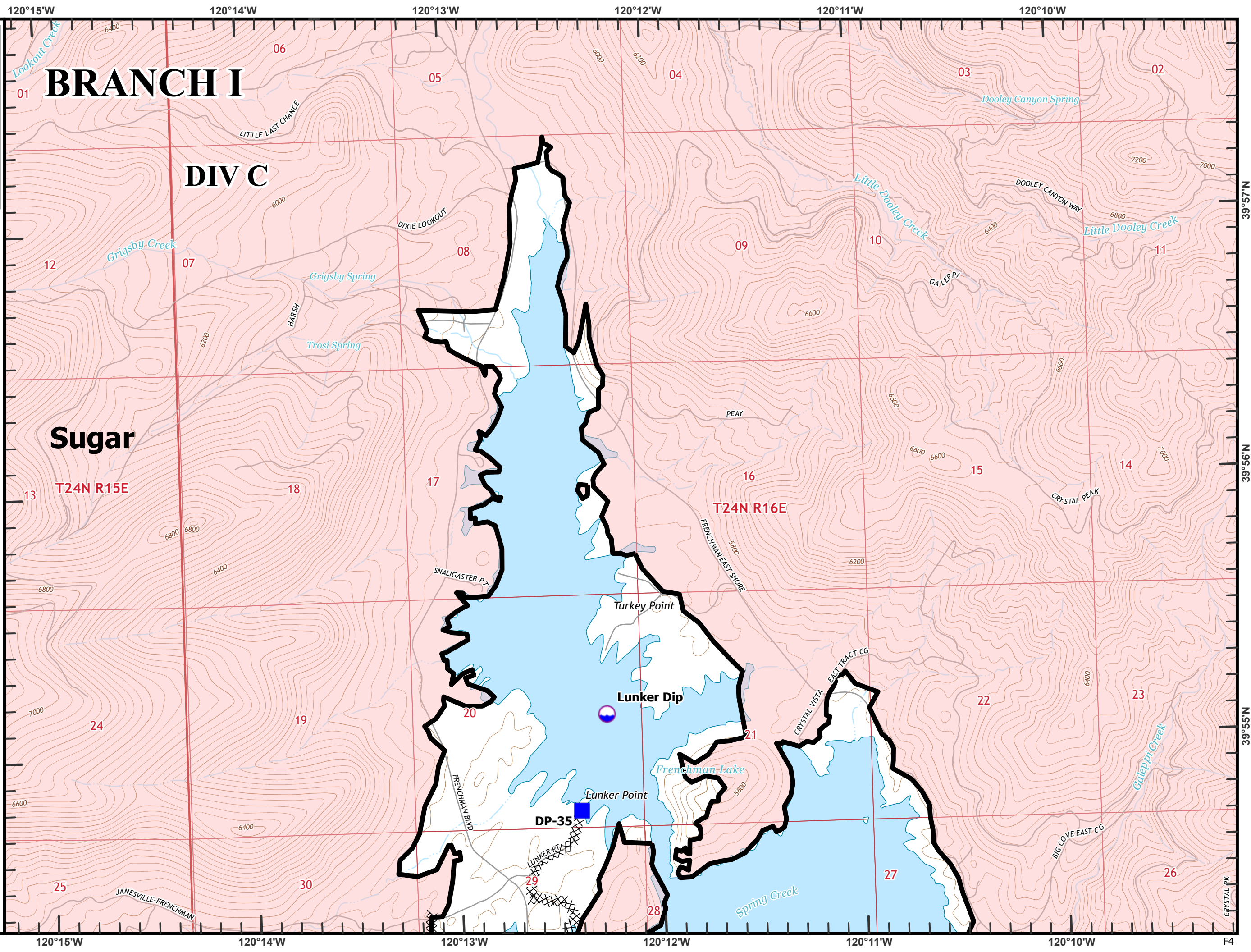


Beckworth Complex
CA-PNF-001064
NAD83, Zone 10
IAP Tiles
07/14/2021
Day Shift
Branch I
Index Grid
F4

- ⊗ Completed Dozer Line
- Dip Site
- Drop Point
- Contained Line



0 1/4 1/2 Miles



Beckworth Complex
 CA-PNF-001064
 NAD83, Zone 10
 IAP Tiles
 07/14/2021
 Day Shift
 Branch I
 Index Grid
 G2

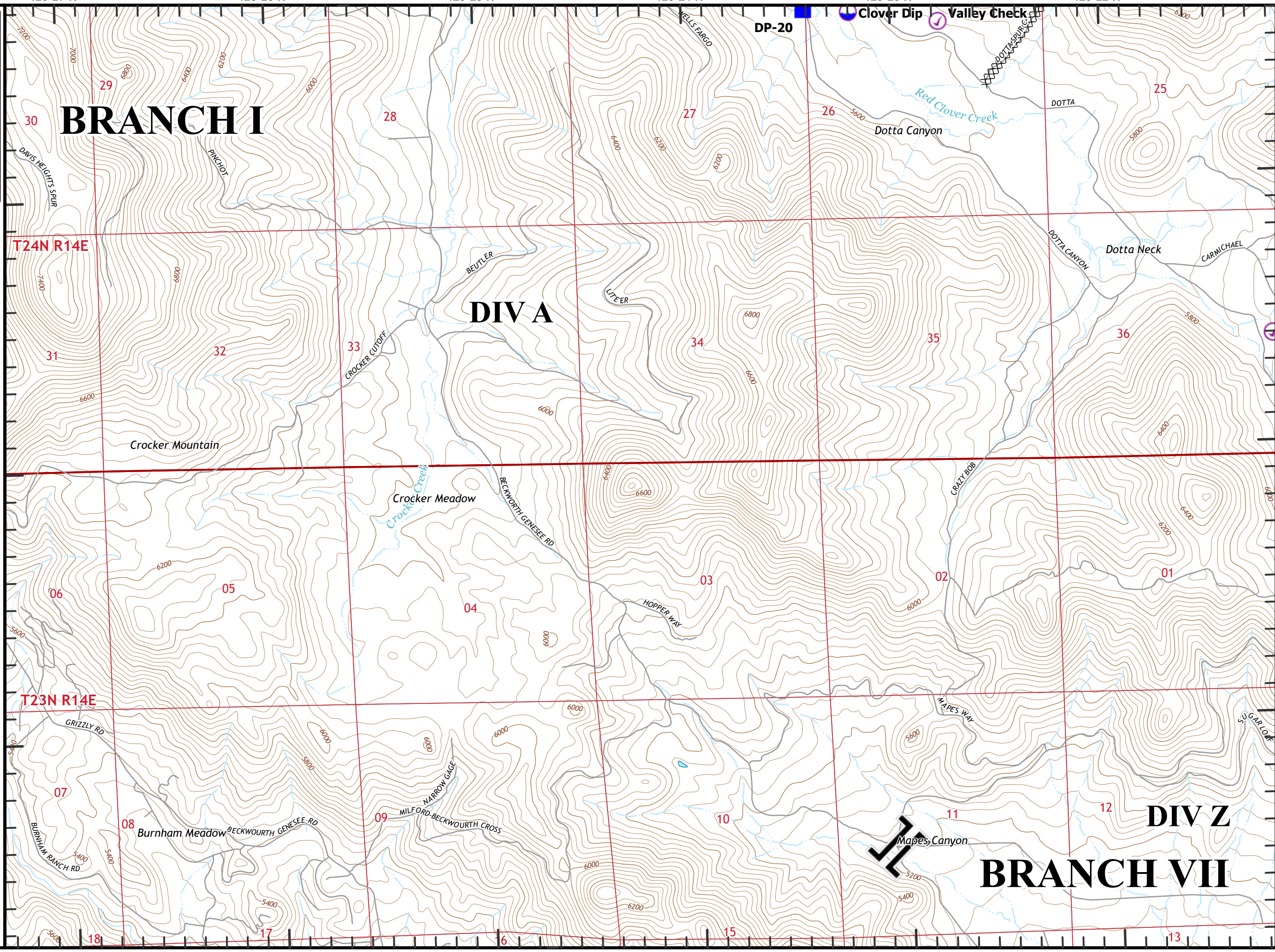
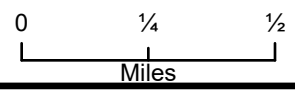
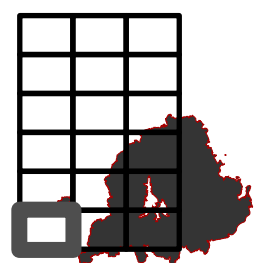
⊗ Completed Dozer Line

 Branch Break

 Check Point

 Dip Site

 Drop Point



T24N R14E

T23N R14E

BRANCH I

DIV A

BRANCH VII

DIV Z

120°27'W

120°26'W

120°25'W

120°24'W

120°23'W

120°22'W

G2

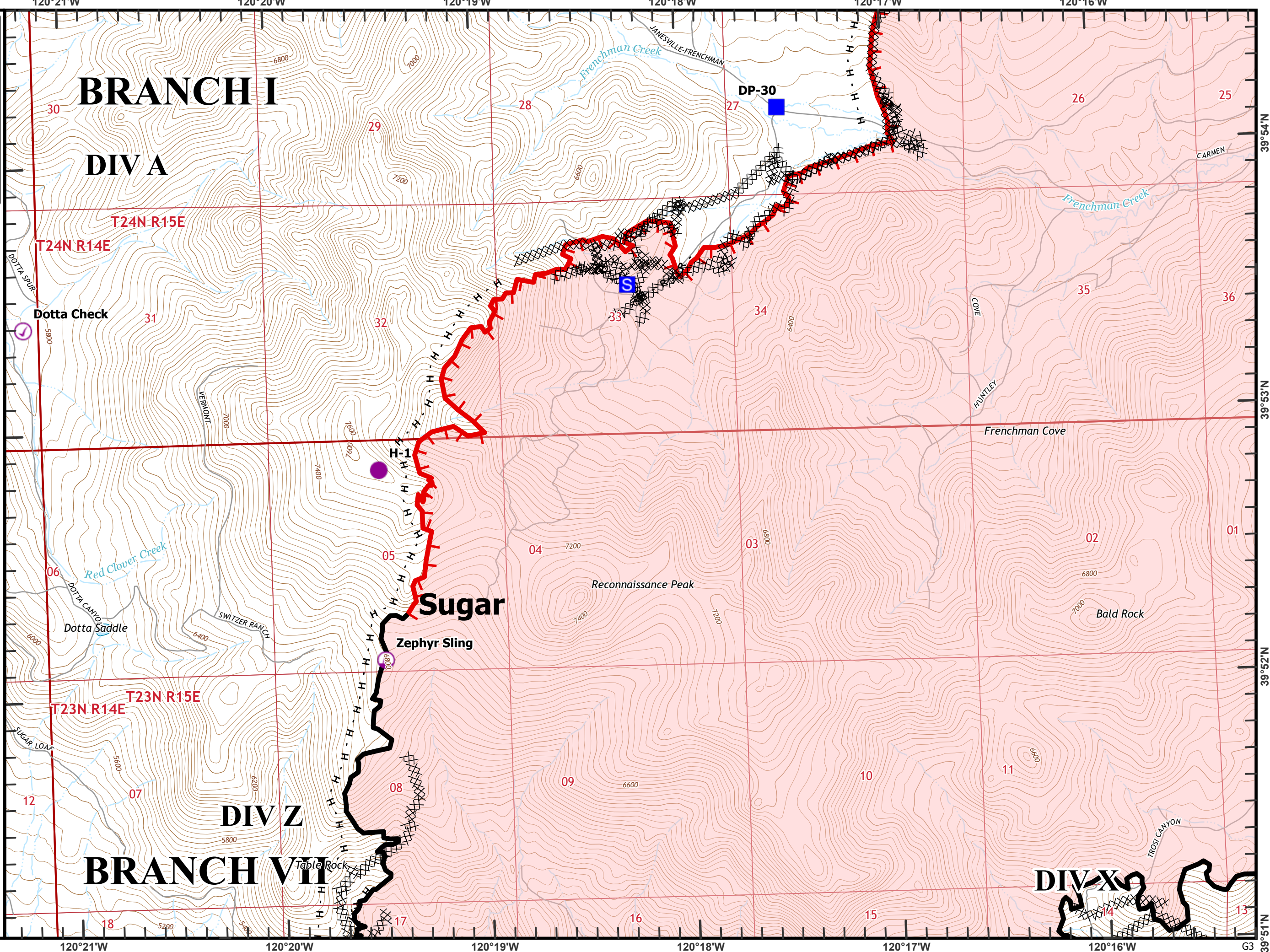
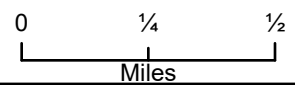
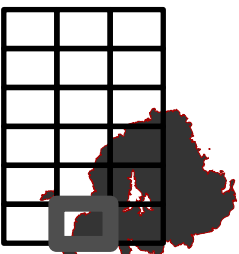
39°54'N

39°53'N

39°52'N

Beckworth Complex
CA-PNF-001064
NAD83, Zone 10
IAP Tiles
07/14/2021
Day Shift
Branch I
Index Grid
G3

- ⊗ Completed Dozer Line
- H Completed Hand Line
- R Completed Road as Line
- ⊙ Check Point
- Helispot
- ⊕ Sling Site
- Drop Point
- S Staging Area
- └ Fire Edge
- ▬ Contained Line



BRANCH I

DIV A

Sugar

Zephyr Sling

DIV Z

BRANCH VII

DIV X

39°54'N
39°53'N
39°52'N
39°51'N
G3

