

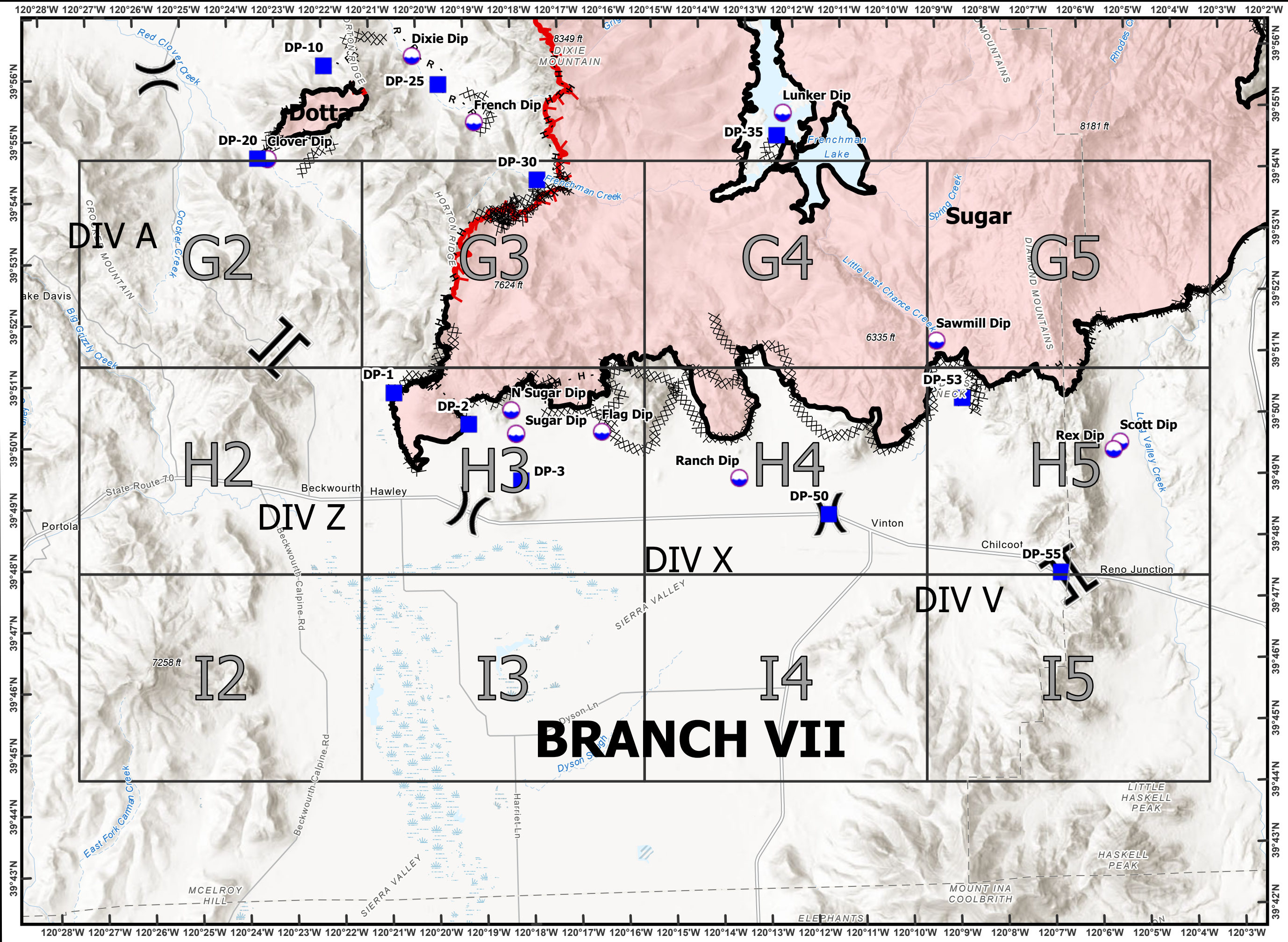
**Beckwourth Complex**  
**CA-PNF-001064**  
**NAD83, Zone 10**  
**IAP Index**  
**07/14/21**  
**Day Shift**  
**Branch VII**



- Division Break
- Branch Break
- Dip Site
- Drop Point
- Hot Spot - Spot Fire
- Completed Dozer Line
- Completed Hand Line
- Completed Mixed Construction Line
- Completed Road as Line
- Planned Dozer Line
- Fire Edge
- Contained Line



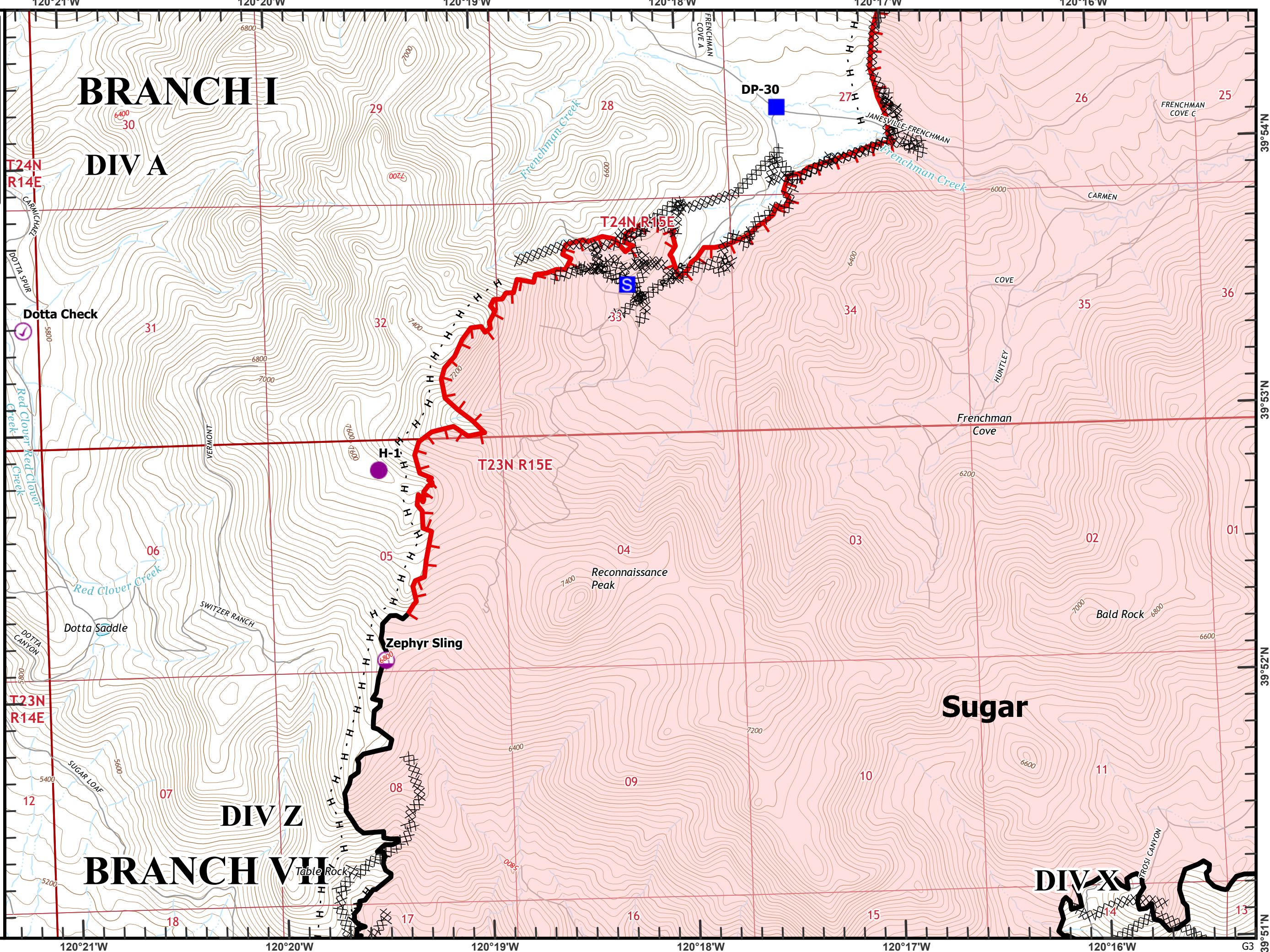
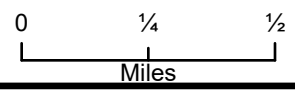
0 1 2  
Miles





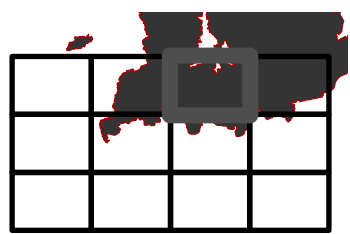
**Beckworth Complex**  
**CA-PNF-001064**  
**NAD83, Zone 10**  
**IAP Tiles**  
**07/14/2021**  
**Day Shift**  
**Branch VII**  
**Index Grid**  
**G3**

- ⊗ Completed Dozer Line
- H Completed Hand Line
- R Completed Road as Line
- ⊙ Check Point
- Helispot
- ⊕ Sling Site
- Drop Point
- S Staging Area
- ┌ Fire Edge
- ▬ Contained Line

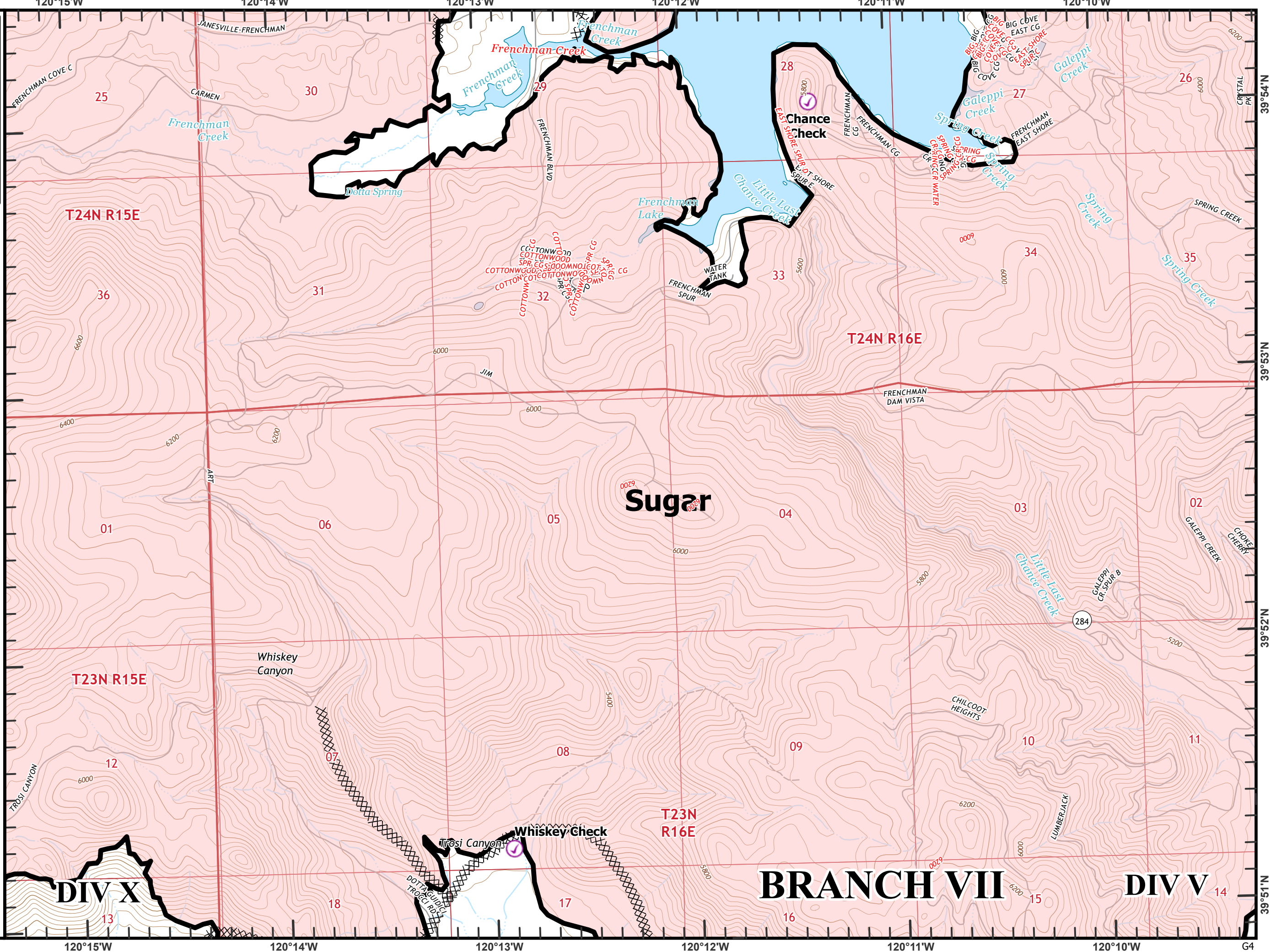


**Beckworth Complex**  
**CA-PNF-001064**  
**NAD83, Zone 10**  
**IAP Tiles**  
**07/14/2021**  
**Day Shift**  
**Branch VII**  
**Index Grid**  
**G4**



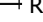
- ⊗ Completed Dozer Line
- ⊙ Check Point
- ⊙ Dip Site
- ▬ Contained Line

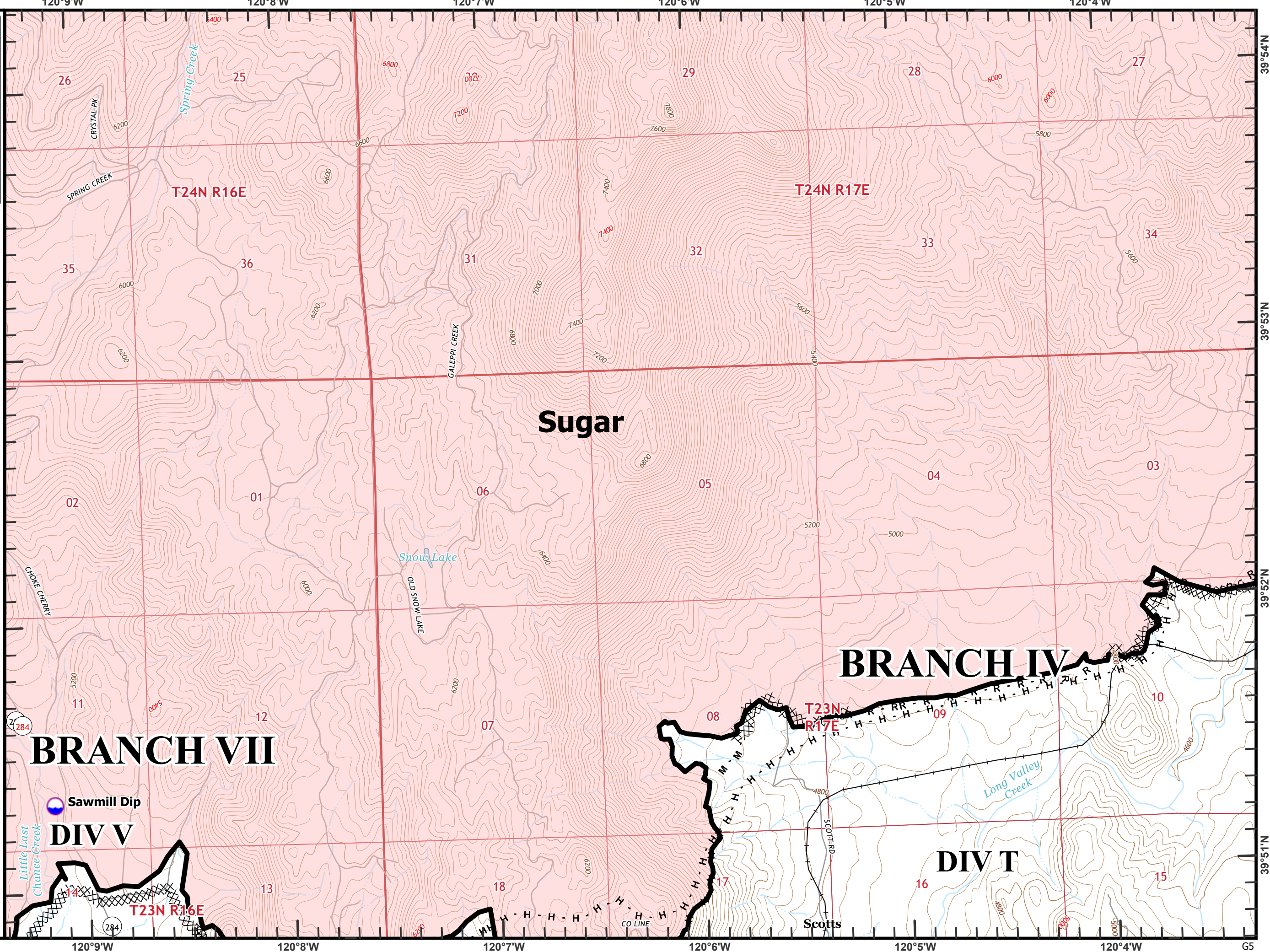
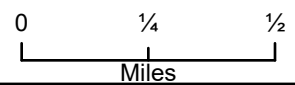


0 1/4 1/2  
 Miles



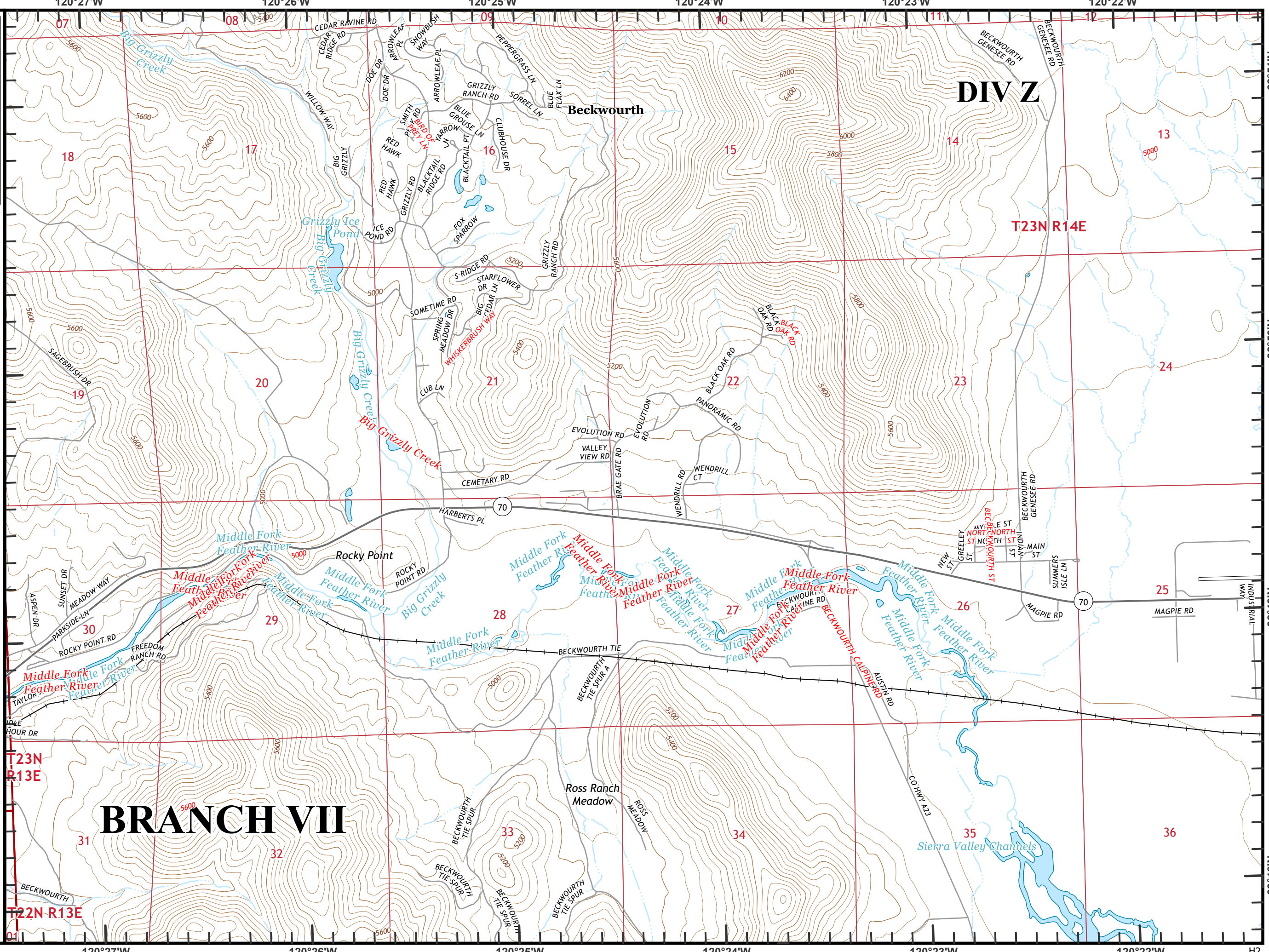
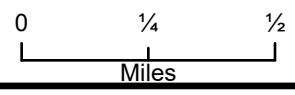
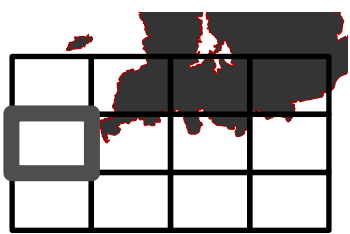
**Beckworth Complex**  
**CA-PNF-001064**  
**NAD83, Zone 10**  
**IAP Tiles**  
**07/14/2021**  
**Day Shift**  
**Branch VII**  
**Index Grid**  
**G5**

- ⊗ Completed Dozer Line
- H Completed Hand Line
- M Completed Mixed Construction Line
- R Completed Road as Line
-  Dip Site
-  Contained Line
-  Railroad



Beckwourth Complex  
CA-PNF-001064  
NAD83, Zone 10  
IAP Tiles  
07/14/2021  
Day Shift  
Branch VII  
Index Grid  
H2

—+ Railroad



DIV Z

BRANCH VII

Beckwourth

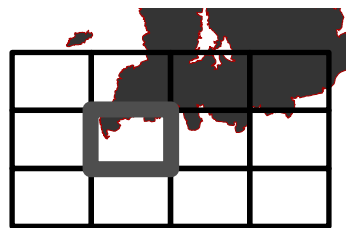
Rocky Point

Ross Ranch Meadow

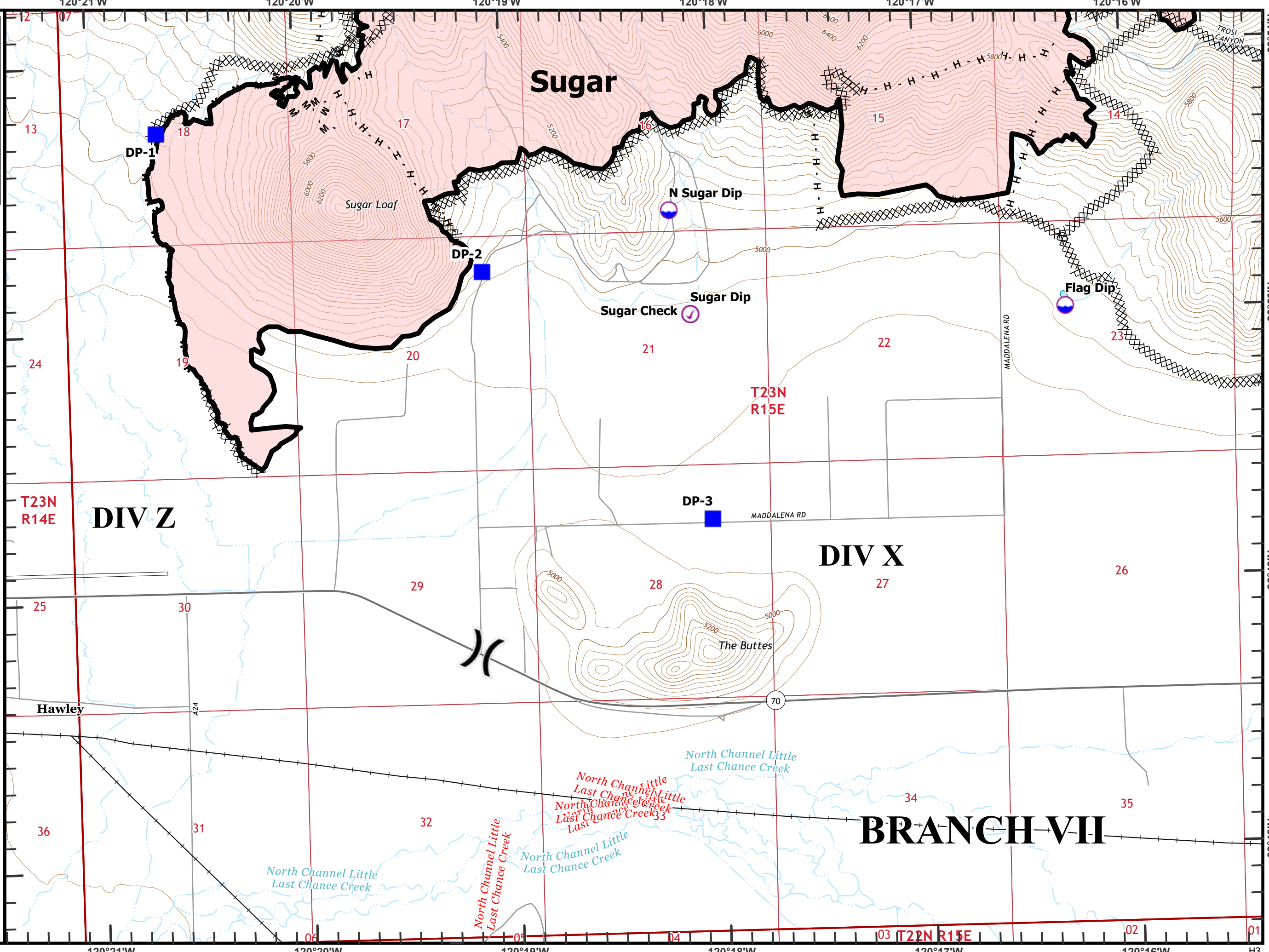
Sierra Valley Channels

**Beckworth Complex**  
**CA-PNF-001064**  
**NAD83, Zone 10**  
**IAP Tiles**  
**07/14/2021**  
**Day Shift**  
**Branch VII**  
**Index Grid**  
**H3**

- ⊗ Completed Dozer Line
- H Completed Hand Line
- M Completed Mixed Construction Line
- )) Division Break
- ⊙ Check Point
- ⊙ Dip Site
- Drop Point
- ▬ Contained Line
- Railroad

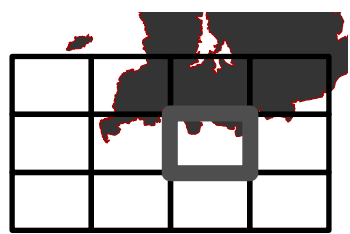


0 1/4 1/2  
 Miles

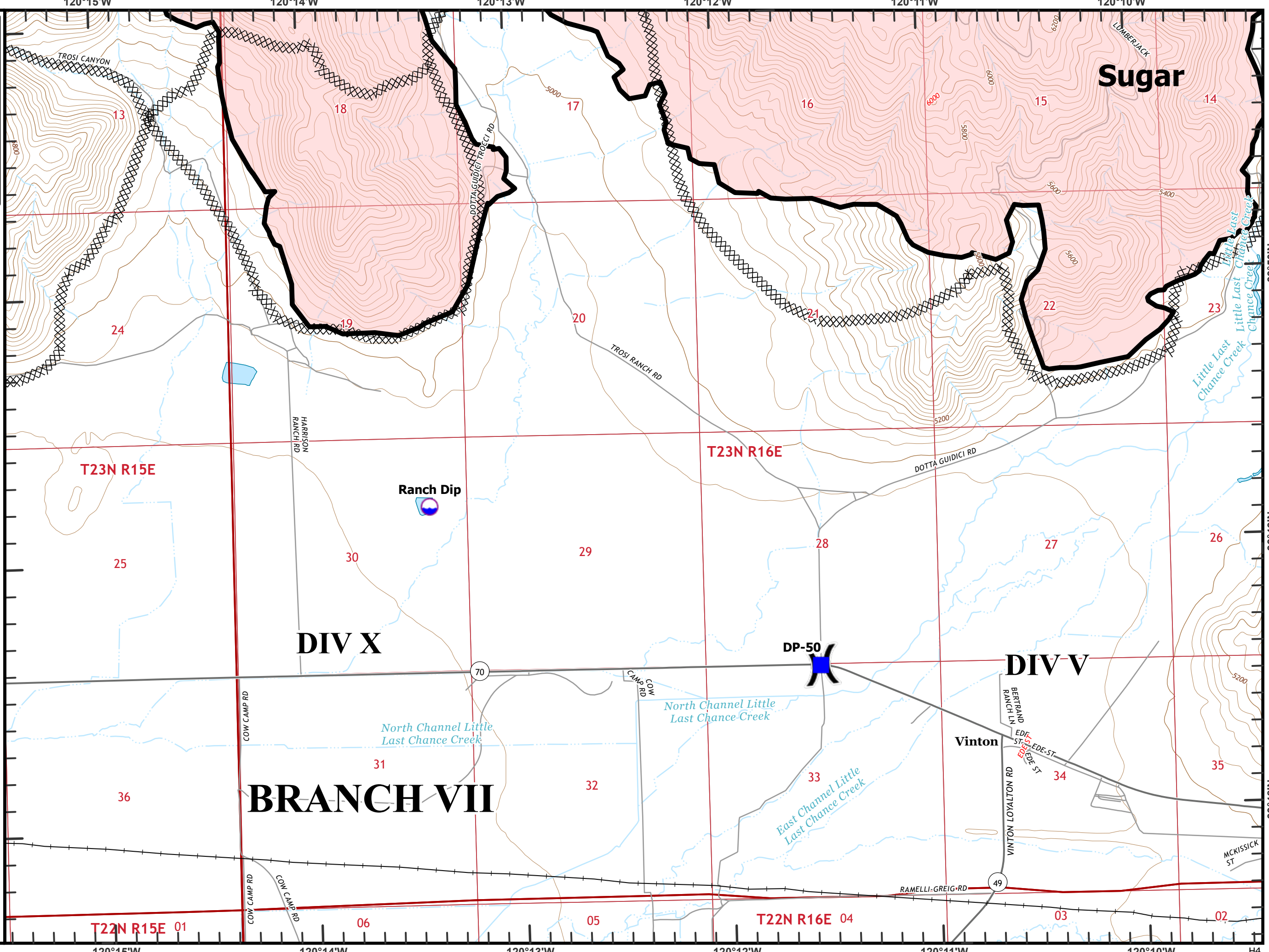


Beckworth Complex  
 CA-PNF-001064  
 NAD83, Zone 10  
 IAP Tiles  
 07/14/2021  
 Day Shift  
 Branch VII  
 Index Grid  
 H4

- ⊗ Completed Dozer Line
- ⌋ Division Break
- 📍 Dip Site
- 📍 Sling Site
- 📍 Drop Point
- Contained Line
- + Railroad



0 1/4 1/2  
 Miles



Sugar

DIV X

DIV V

BRANCH VII

Vinton






T22N R15E 01

T22N R16E 04

H4

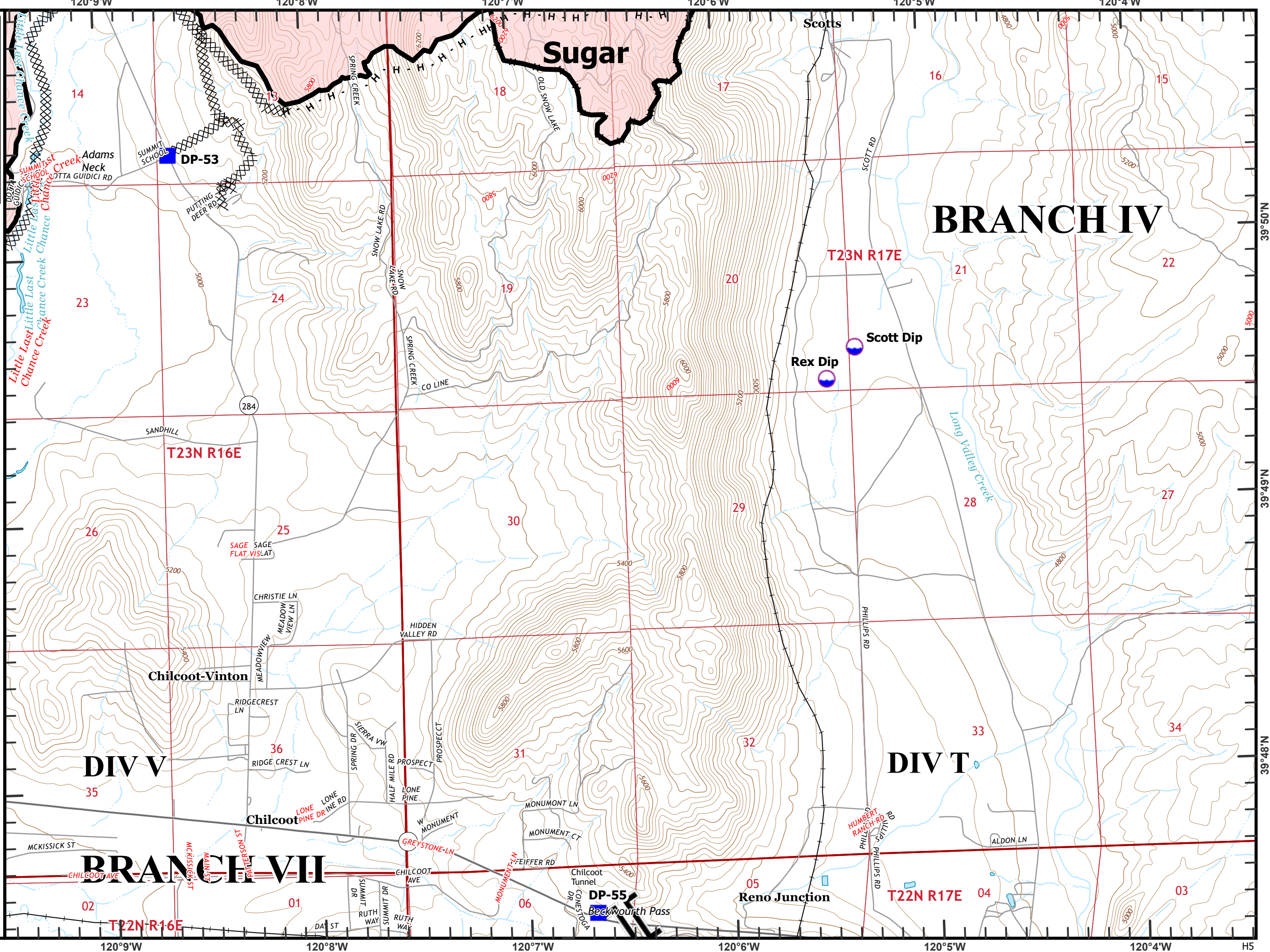


Beckworth Complex  
 CA-PNF-001064  
 NAD83, Zone 10  
 IAP Tiles  
 07/14/2021  
 Day Shift  
 Branch VII  
 Index Grid  
 H5

- ⊗ Completed Dozer Line
- H Completed Hand Line
-  Branch Break
-  Dip Site
-  Drop Point
-  Contained Line
-  Railroad



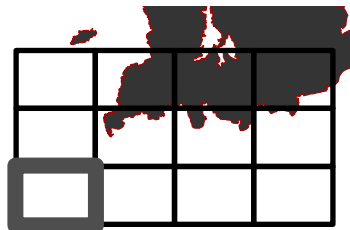
0 1/4 1/2  
 Miles



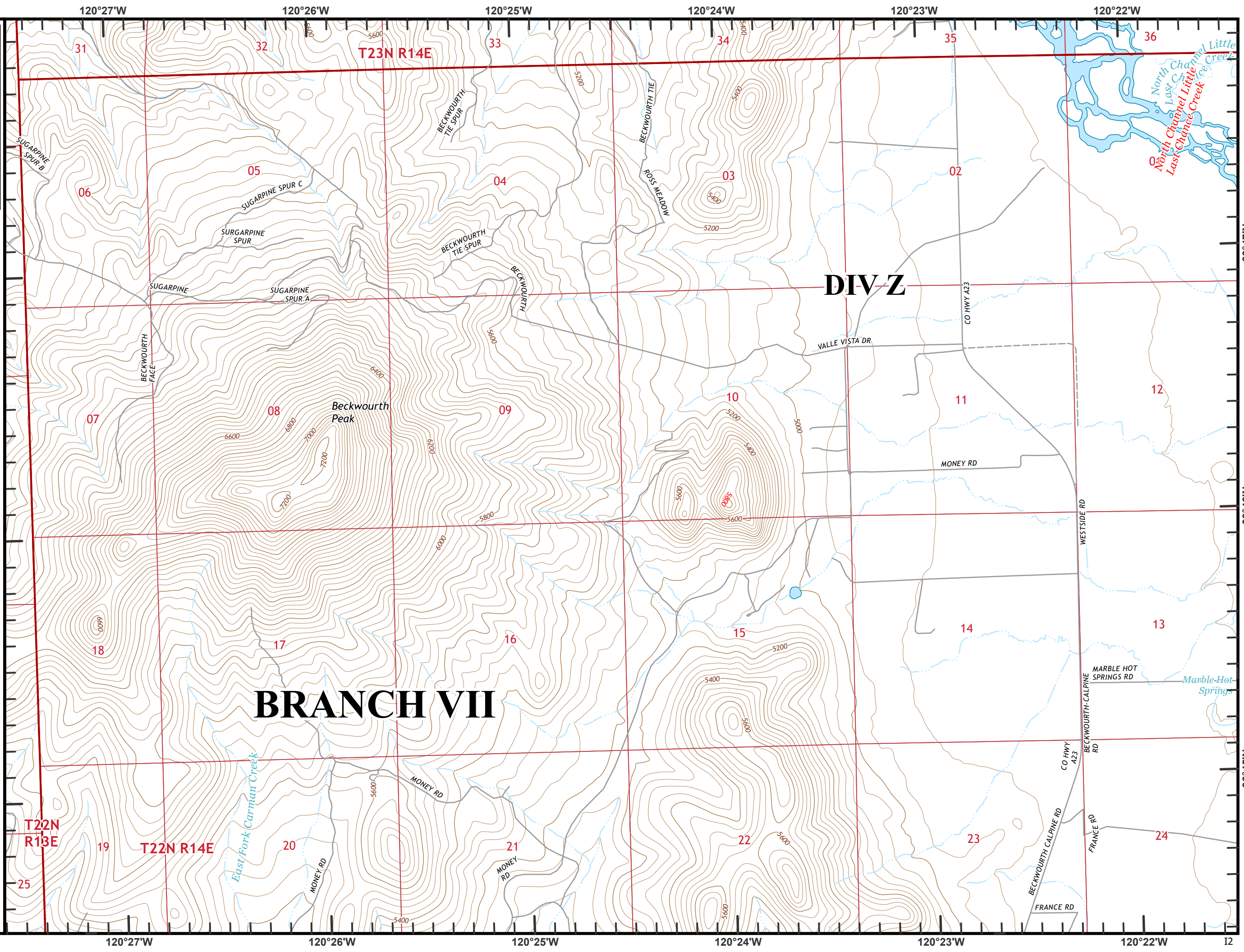
39°50'N  
 39°49'N  
 39°48'N

H5

Beckwourth Complex  
CA-PNF-001064  
NAD83, Zone 10  
IAP Tiles  
07/14/2021  
Day Shift  
Branch VII  
Index Grid  
I2



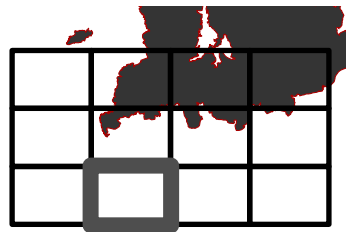
0 1/4 1/2  
Miles



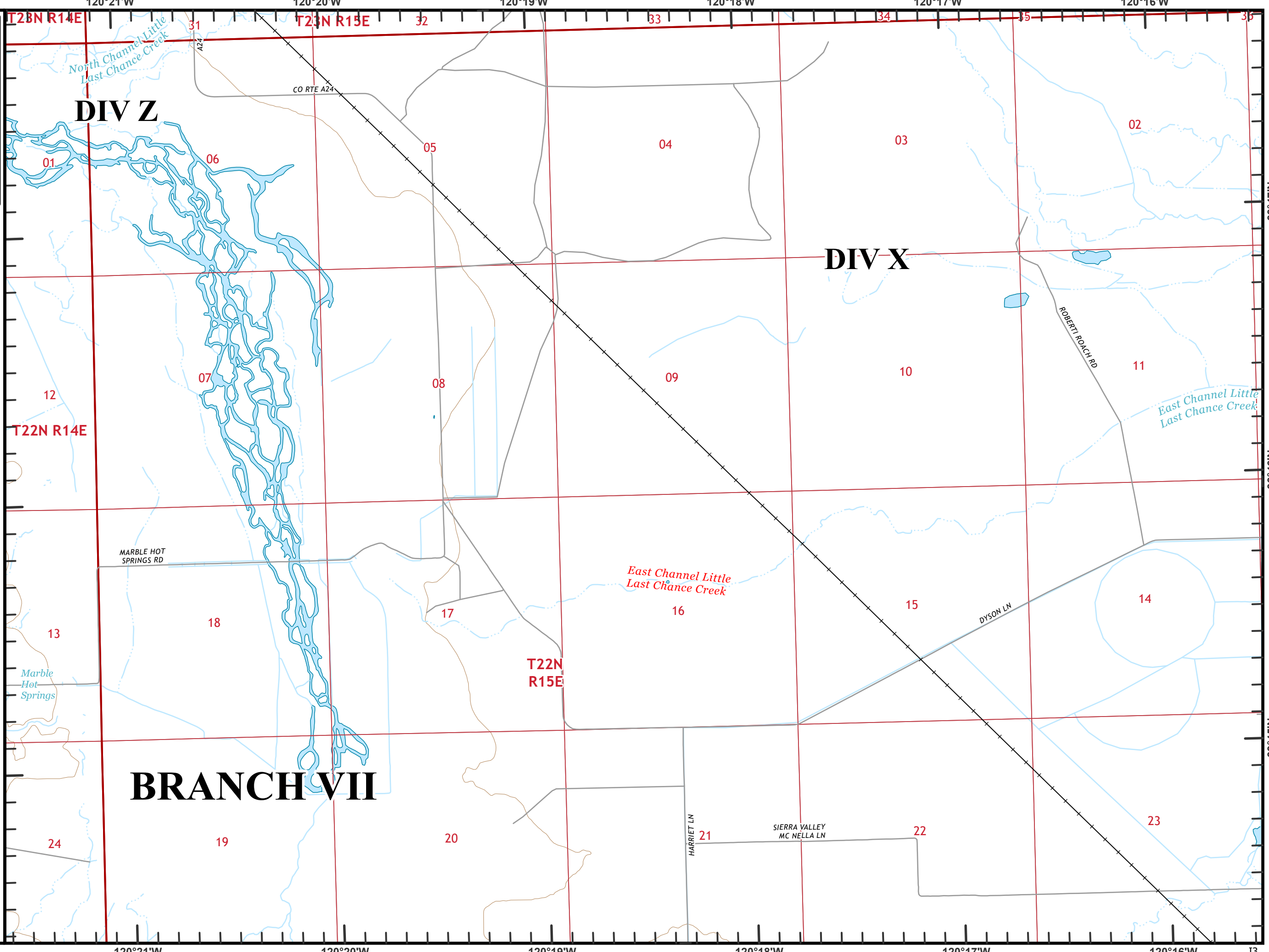
39°47'N  
39°46'N  
39°45'N

Beckwourth Complex  
CA-PNF-001064  
NAD83, Zone 10  
IAP Tiles  
07/14/2021  
Day Shift  
Branch VII  
Index Grid  
I3



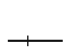
—+— Railroad

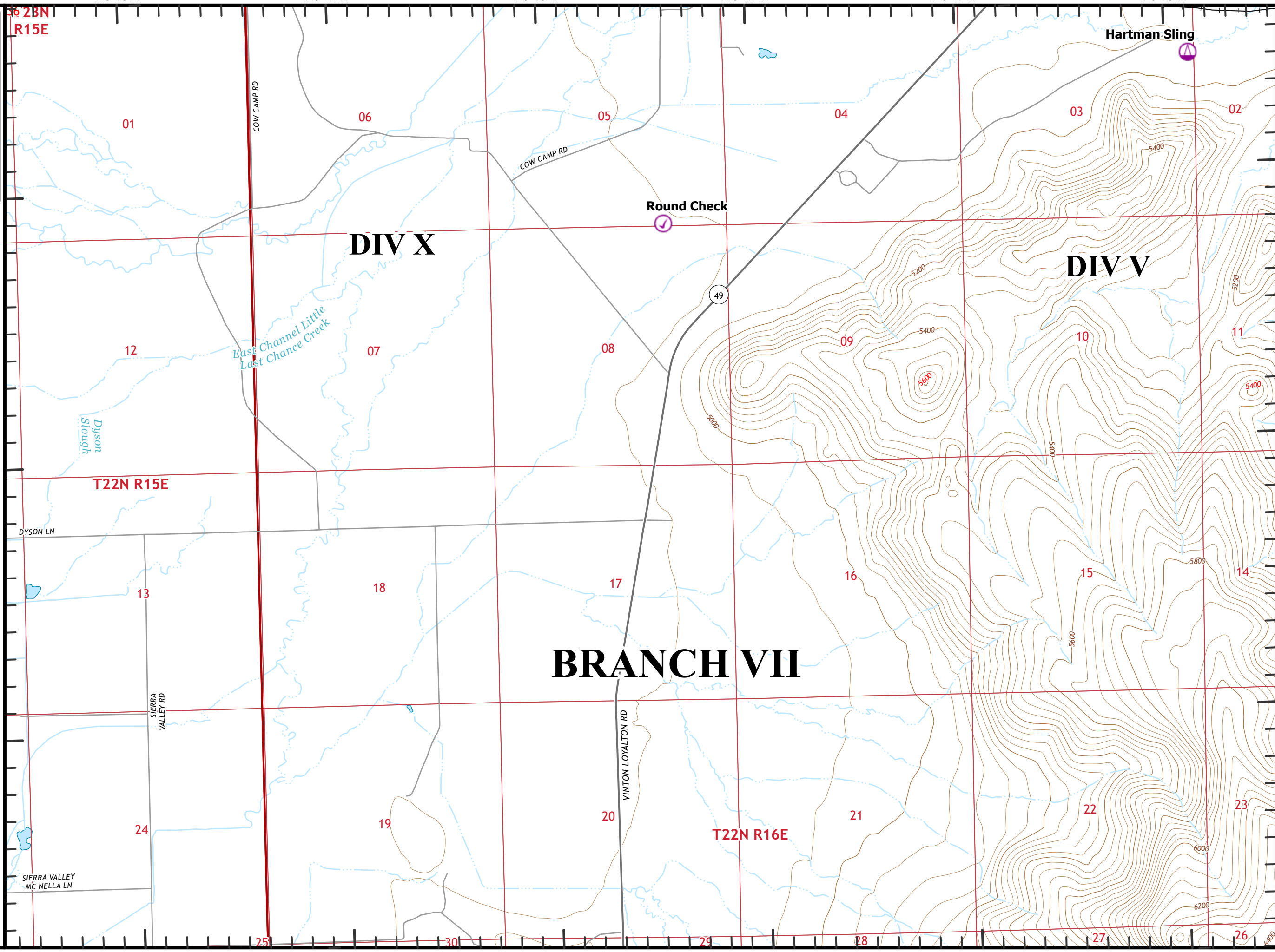
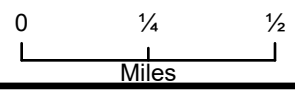
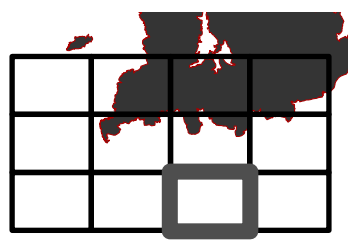


0 1/4 1/2  
Miles







Beckworth Complex  
CA-PNF-001064  
NAD83, Zone 10  
IAP Tiles  
07/14/2021  
Day Shift  
Branch VII  
Index Grid  
I4

-  Check Point
-  Sling Site
-  Railroad



Beckworth Complex  
CA-PNF-001064  
NAD83, Zone 10  
IAP Tiles  
07/14/2021  
Day Shift  
Branch VII  
Index Grid  
I5

-  Branch Break
-  Drop Point
-  Repeater
-  Railroad

