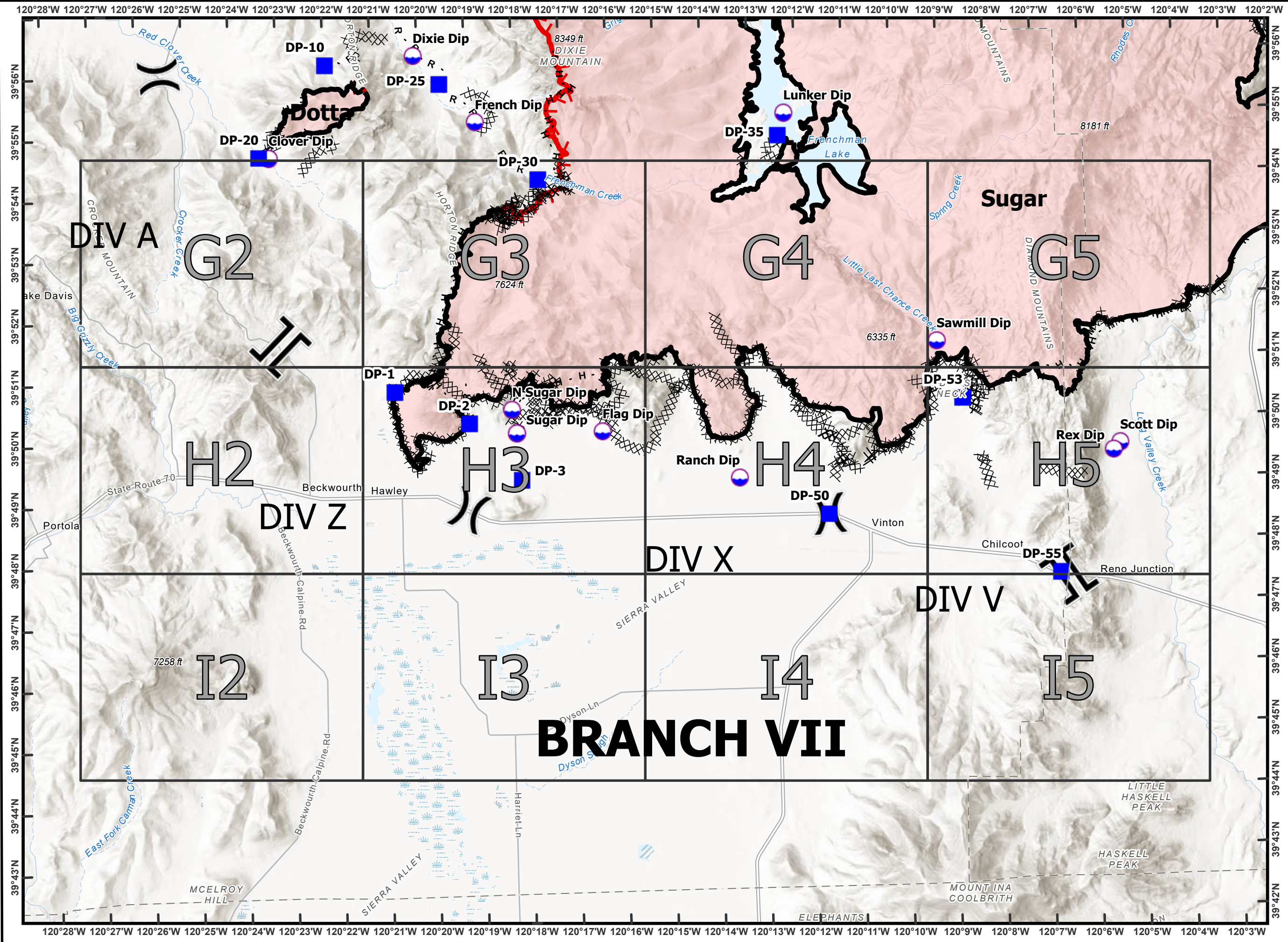
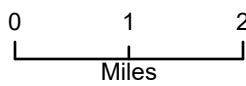






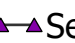
**Beckwourth Complex**  
**CA-PNF-001064**  
**NAD83, Zone 10**  
**IAP Index**  
**07/16/2021**  
**Day Shift**  
**Branch VII**



- Division Break
- Branch Break
- Dip Site
- Drop Point
- Completed Dozer Line
- Completed Fuel Break
- Completed Hand Line
- Completed Mixed Construction Line
- Completed Road as Line
- Fire Edge
- Contained Line

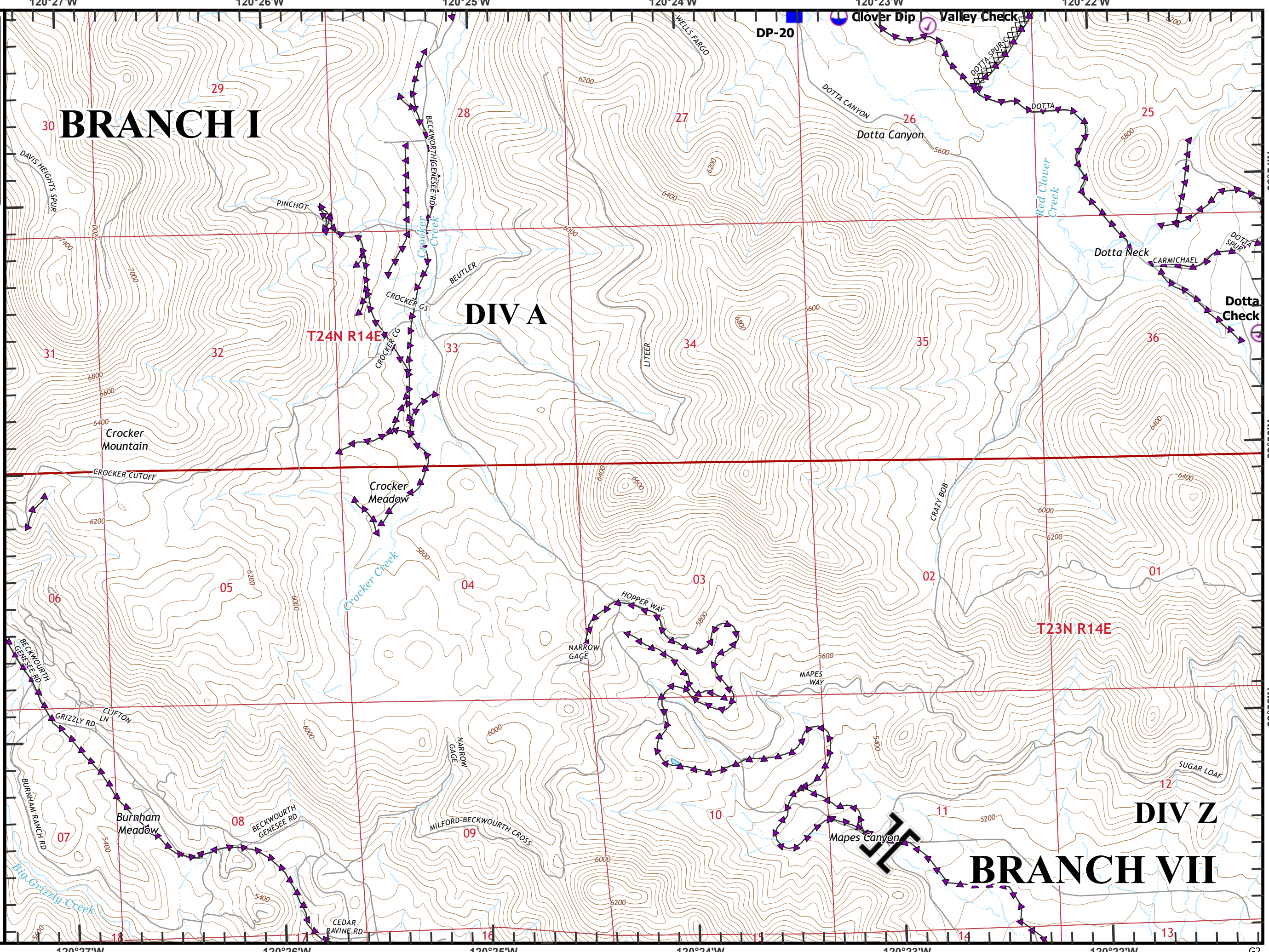


Beckwirth Complex  
 CA-PNF-001064  
 NAD83, Zone 10  
 IAP Tiles  
 07/16/2021  
 Day Shift  
 Branch VII  
 Index Grid  
 G2

- ⊗ Completed Dozer Line
-  Branch Break
-  Check Point
-  Dip Site
-  Drop Point
-  Sensitive Areas



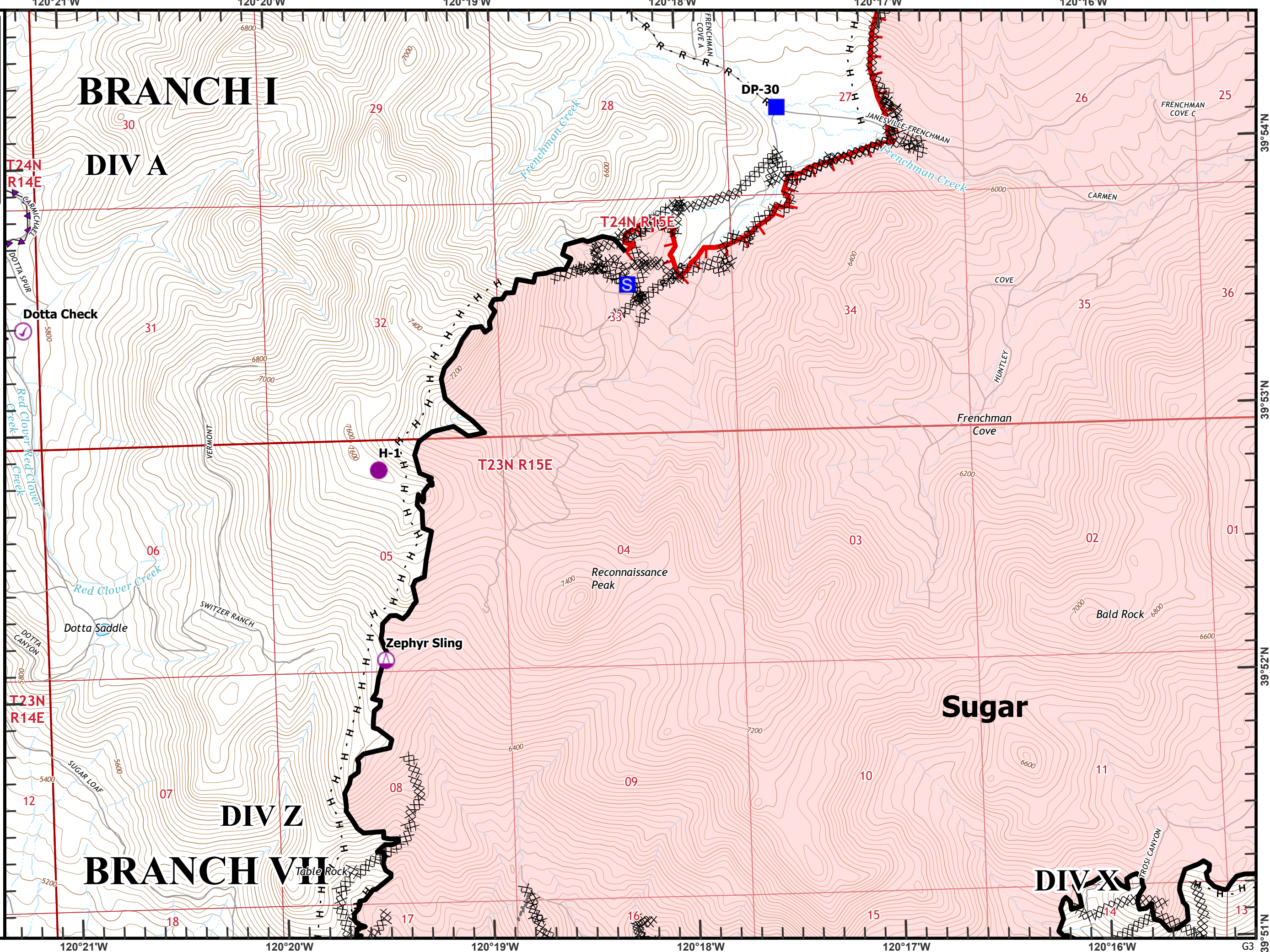
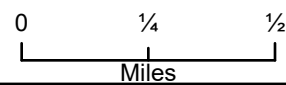
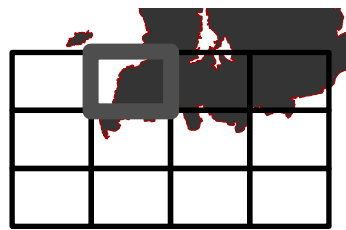
0 1/4 1/2  
 Miles



39°54'N  
 39°53'N  
 39°52'N  
 G2

**Beckworth Complex**  
**CA-PNF-001064**  
**NAD83, Zone 10**  
**IAP Tiles**  
**07/16/2021**  
**Day Shift**  
**Branch VII**  
**Index Grid**  
**G3**

- ⊗ Completed Dozer Line
- H Completed Hand Line
- R Completed Road as Line
- Other
- ⊙ Check Point
- Helispot
- ⚙ Sling Site
- Drop Point
- S Staging Area
- ▬ Fire Edge
- ▬ Contained Line
- ▲ Sensitive Areas



**BRANCH I**

**DIV A**

**DIV Z**

**BRANCH VII**

**Sugar**

**DIV X**

T24N  
R14E

T24N R15E

T23N R15E

T23N  
R14E

39°54'N

39°53'N

39°52'N

39°51'N

120°21'W

120°20'W

120°19'W

120°18'W

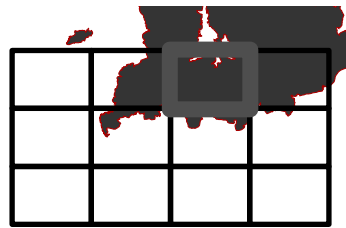
120°17'W

120°16'W

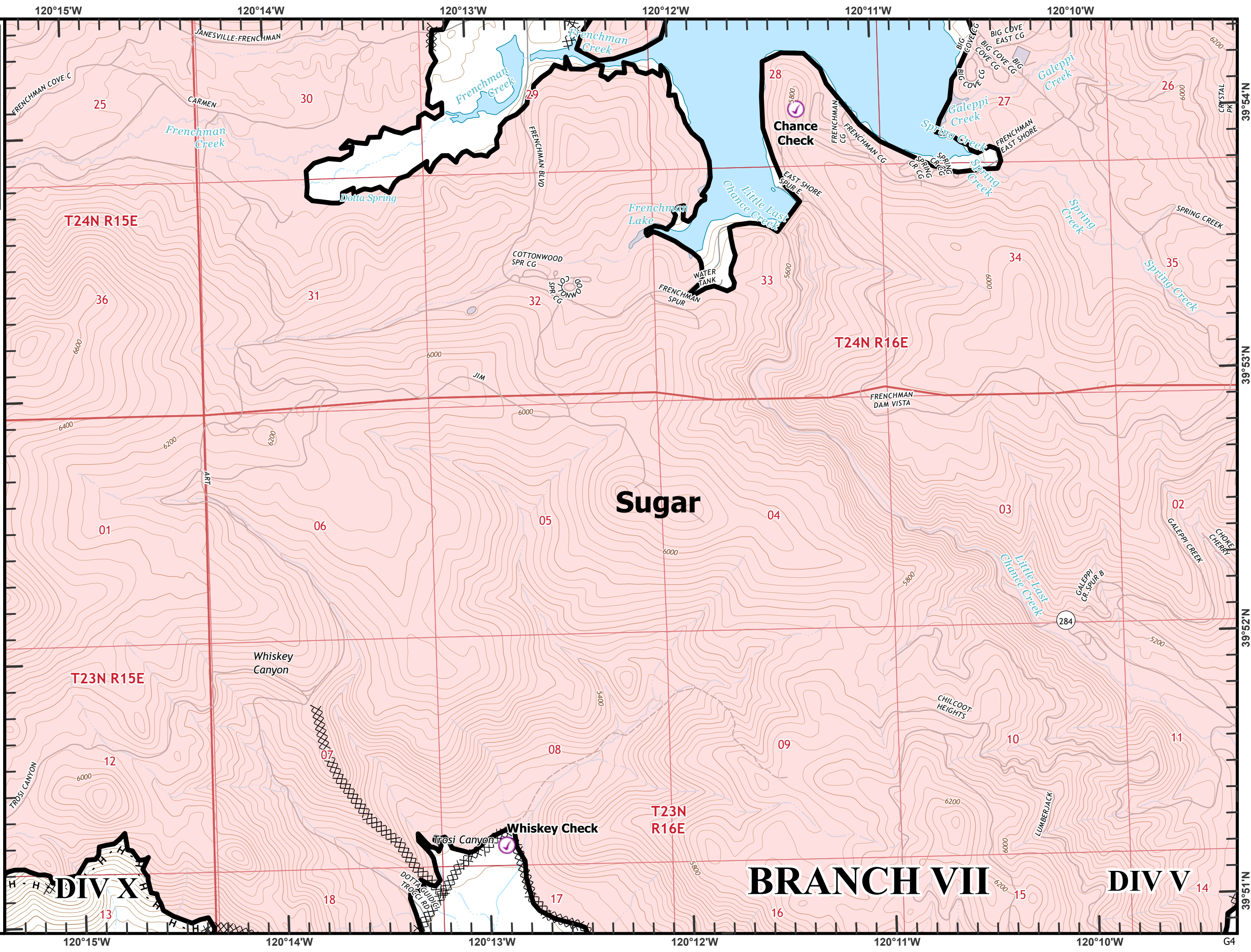
G3

**Beckworth Complex**  
**CA-PNF-001064**  
**NAD83, Zone 10**  
**IAP Tiles**  
**07/16/2021**  
**Day Shift**  
**Branch VII**  
**Index Grid**  
**G4**

- ⊗ Completed Dozer Line
- H Completed Hand Line
- ⊙ Check Point
- Contained Line





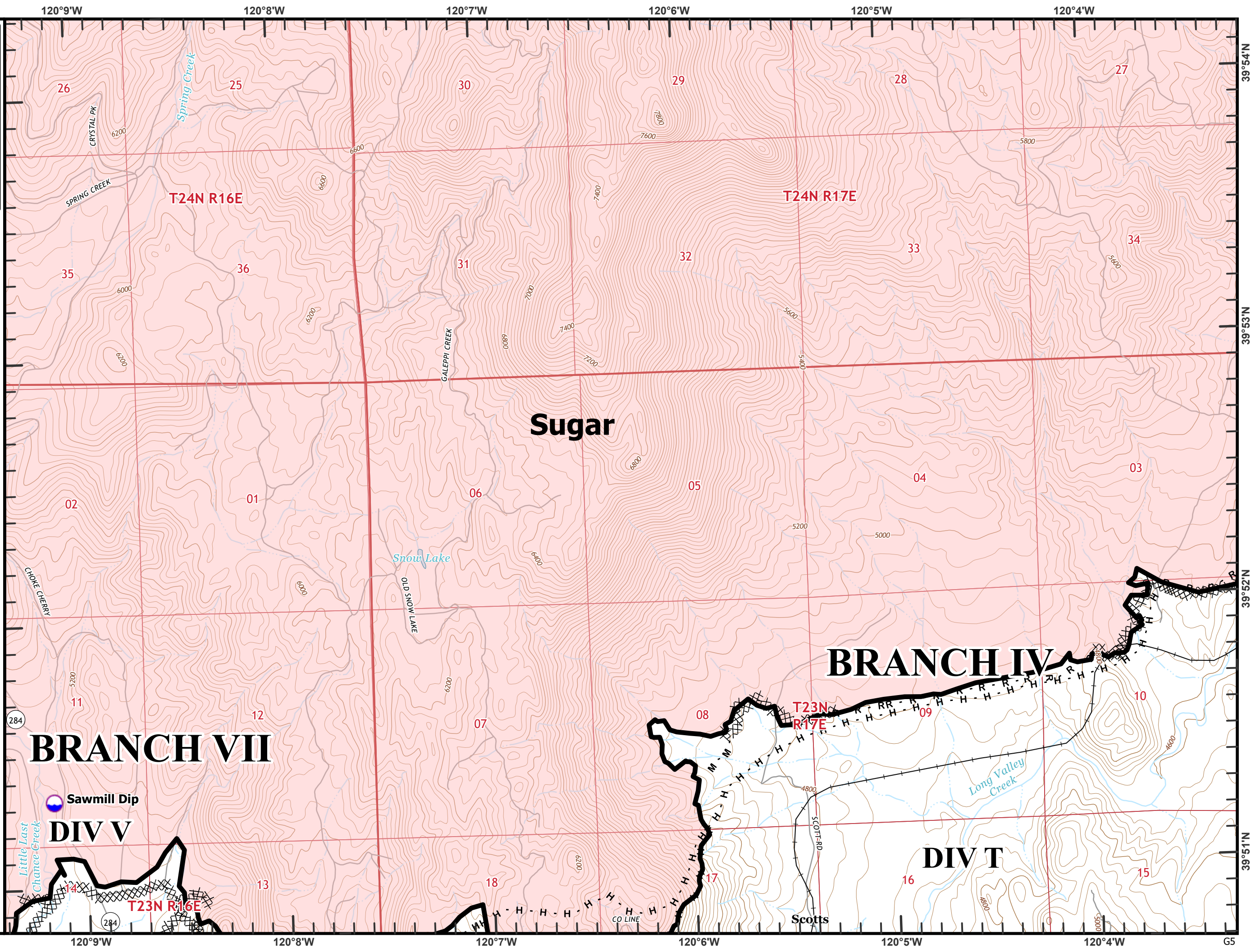
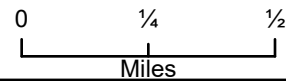
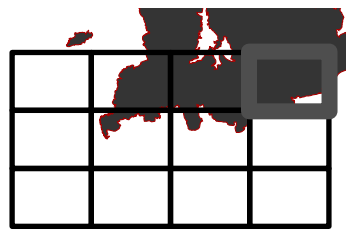
0 1/4 1/2  
Miles




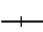

**BRANCH VII** **DIV V**

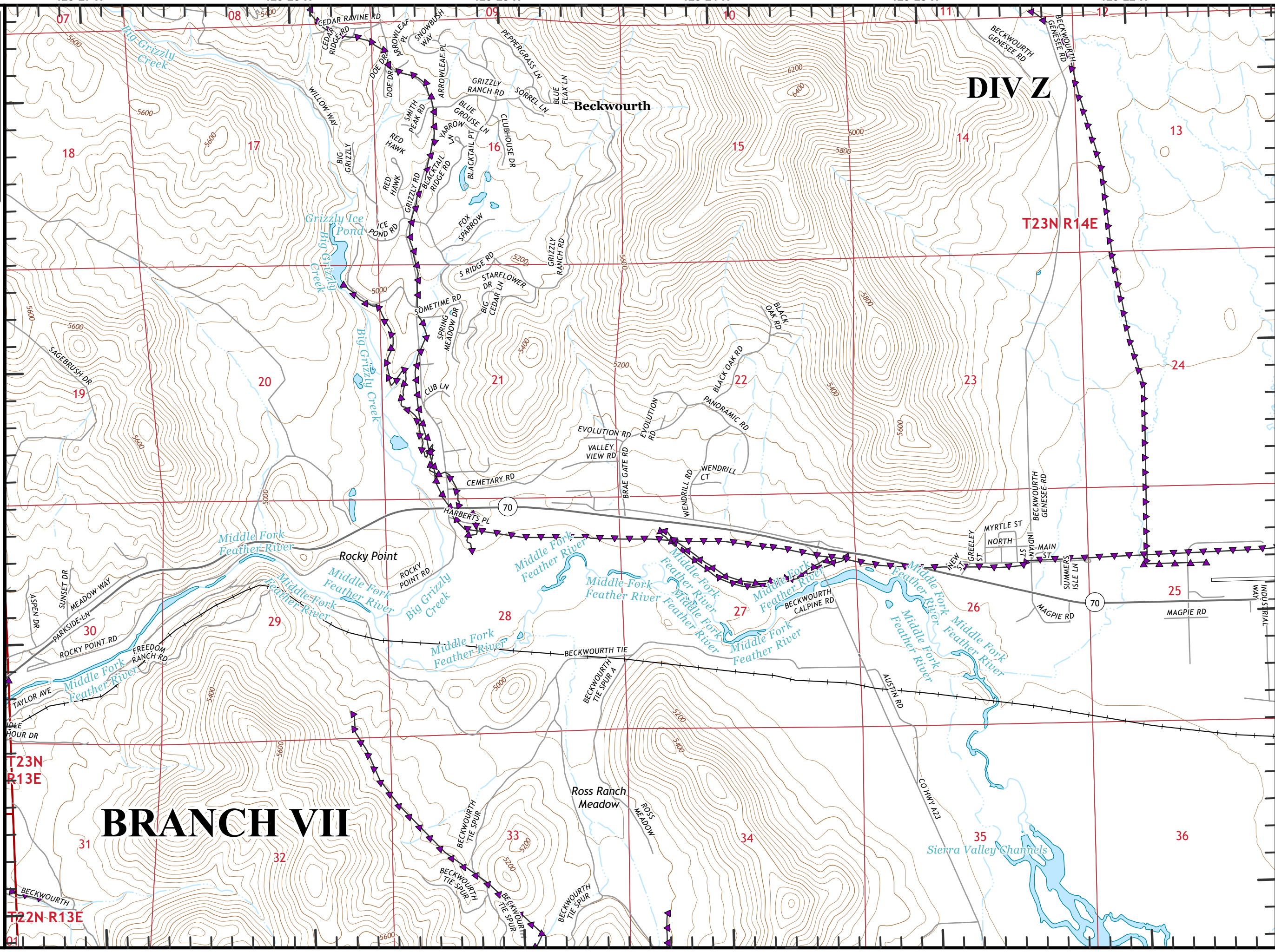
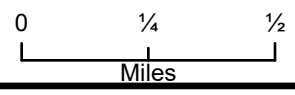
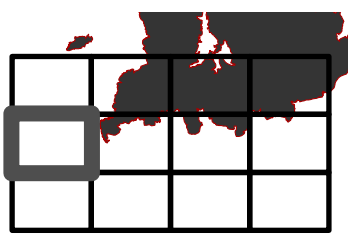
**Beckworth Complex**  
**CA-PNF-001064**  
**NAD83, Zone 10**  
**IAP Tiles**  
**07/16/2021**  
**Day Shift**  
**Branch VII**  
**Index Grid**  
**G5**

- ⊗ Completed Dozer Line
- H Completed Hand Line
- M Completed Mixed Construction Line
- R Completed Road as Line
-  Dip Site
-  Contained Line
- Railroad



**Beckwourth Complex**  
**CA-PNF-001064**  
**NAD83, Zone 10**  
**IAP Tiles**  
**07/16/2021**  
**Day Shift**  
**Branch VII**  
**Index Grid**  
**H2**

-  Helibase
-  Railroad
-  Sensitive Areas



120°27'W 120°26'W 120°25'W 120°24'W 120°23'W 120°22'W

39°51'N 39°50'N 39°49'N 39°48'N

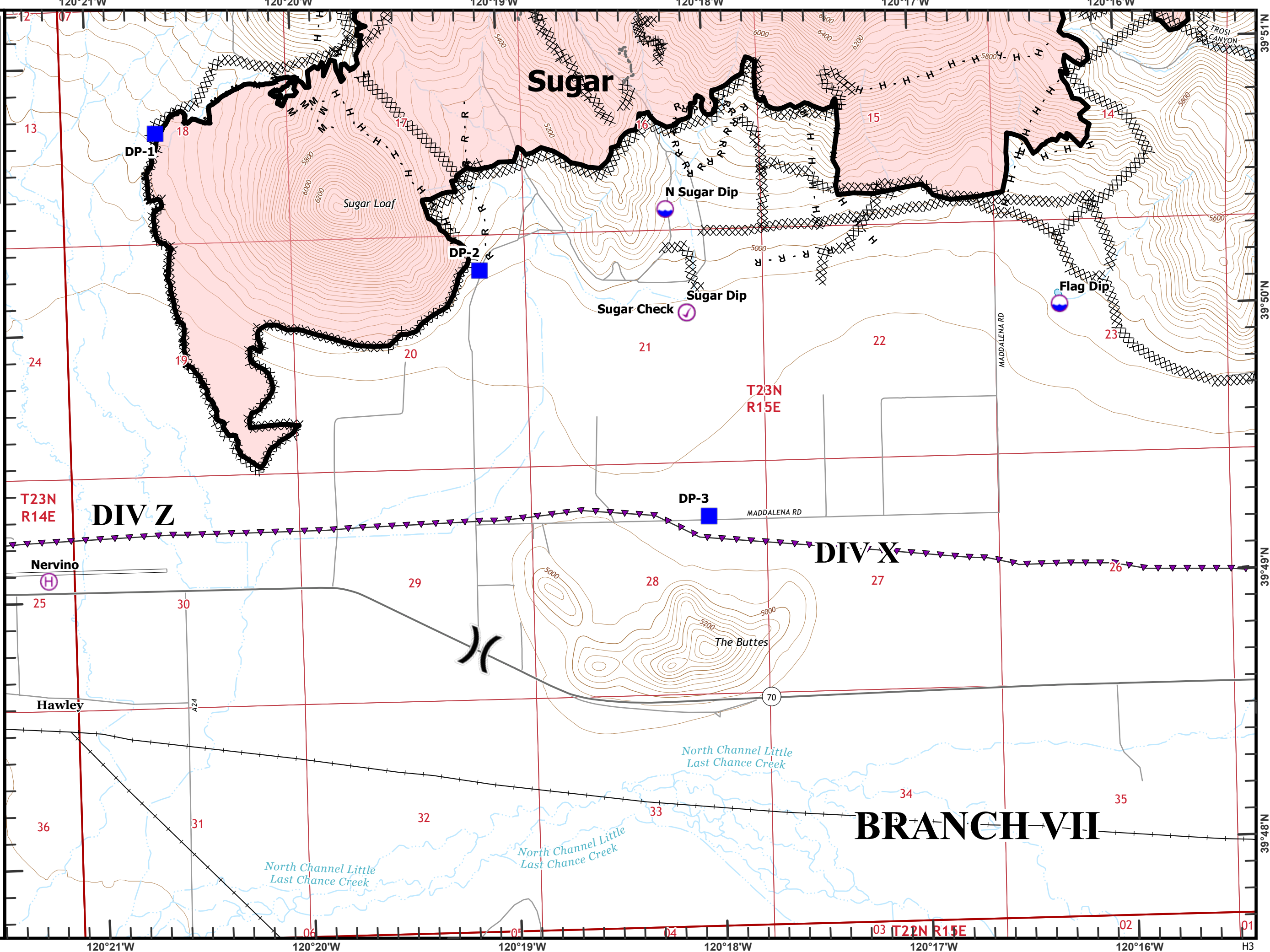
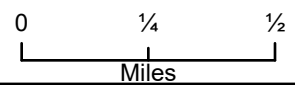
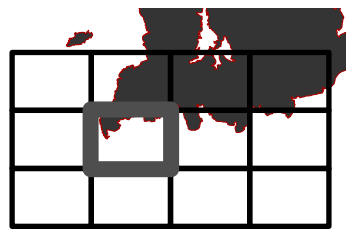
T23N R13E T22N R13E

H2

**Beckworth Complex**  
**CA-PNF-001064**  
**NAD83, Zone 10**  
**IAP Tiles**  
**07/16/2021**  
**Day Shift**  
**Branch VII**  
**Index Grid**  
**H3**

- ⊗ Completed Dozer Line
- H Completed Hand Line
- M Completed Mixed Construction Line
- R Completed Road as Line
- Other

- ( ) Division Break
- ⊙ Check Point
- ⊙ Dip Site
- ⊙ Helibase
- Drop Point
- ▬ Contained Line
- Railroad
- ▲ Sensitive Areas



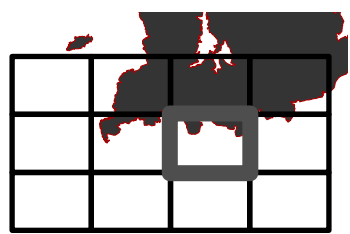
**BRANCH VII**

T22N R15E

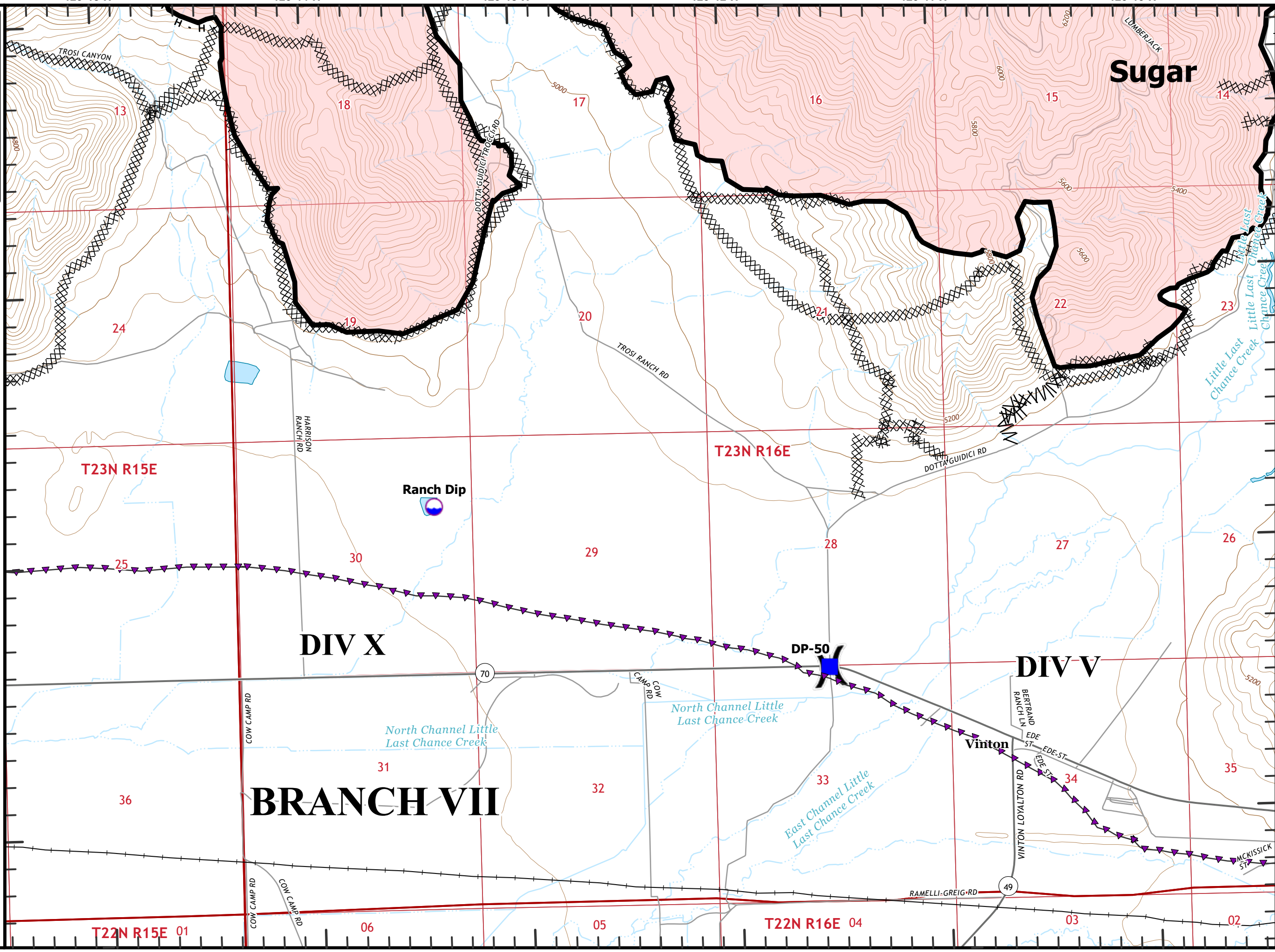
H3

**Beckworth Complex**  
**CA-PNF-001064**  
**NAD83, Zone 10**  
**IAP Tiles**  
**07/16/2021**  
**Day Shift**  
**Branch VII**  
**Index Grid**  
**H4**

- ⊗ Completed Dozer Line
- ∕ Completed Fuel Break
- H Completed Hand Line
- ) Division Break
- 📍 Dip Site
- 📍 Sling Site
- 📍 Drop Point
- Contained Line
- + Railroad
- ▲ Sensitive Areas









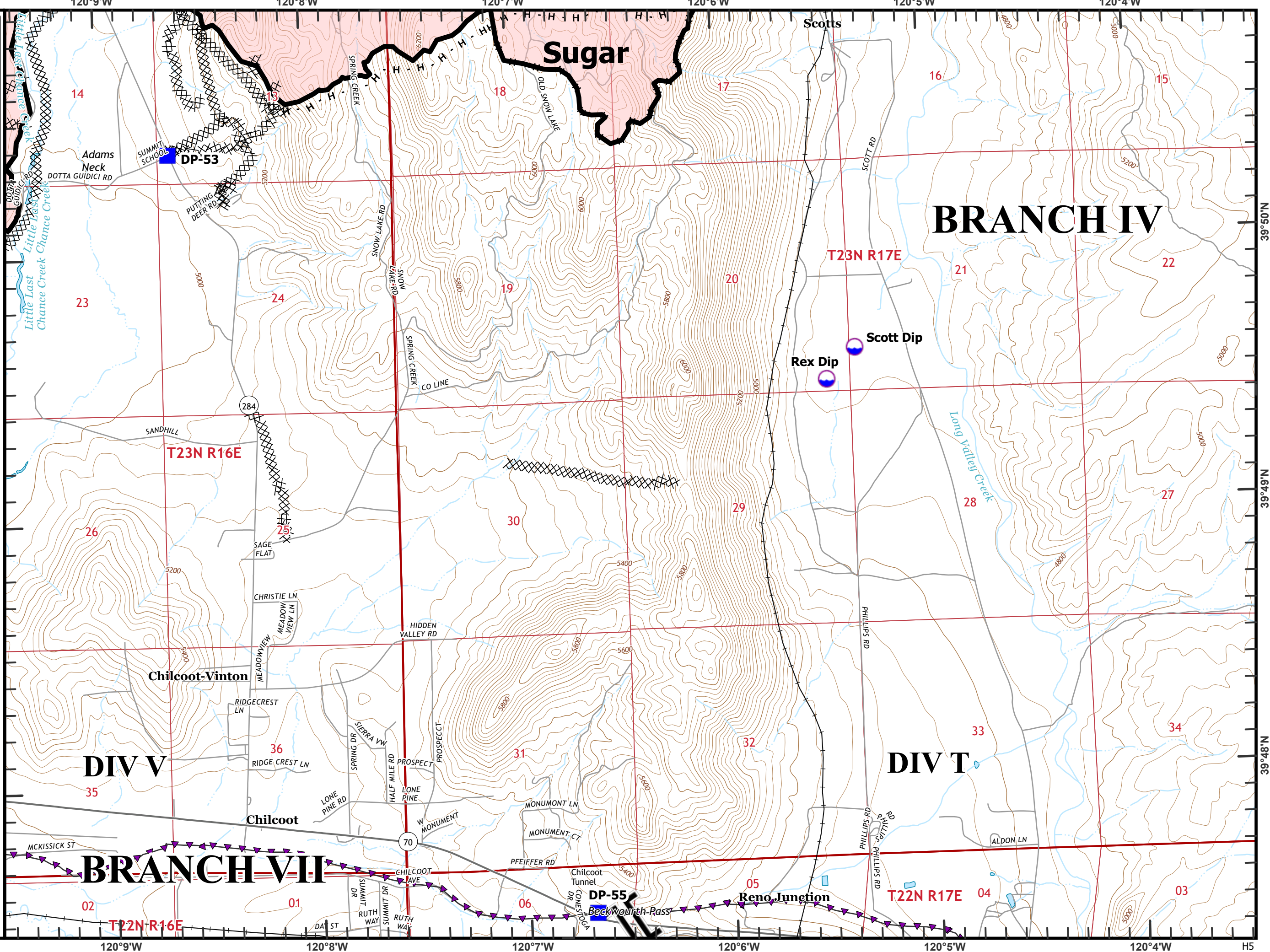
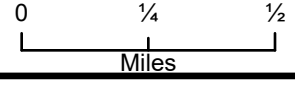
0 1/4 1/2  
 Miles





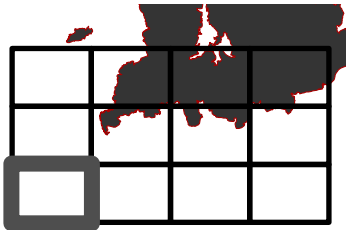
**Beckwourth Complex**  
**CA-PNF-001064**  
**NAD83, Zone 10**  
**IAP Tiles**  
**07/16/2021**  
**Day Shift**  
**Branch VII**  
**Index Grid**  
**H5**

- ⊗ Completed Dozer Line
- H Completed Hand Line
-  Branch Break
-  Dip Site
-  Drop Point
-  Contained Line
-  Railroad
-  Sensitive Areas

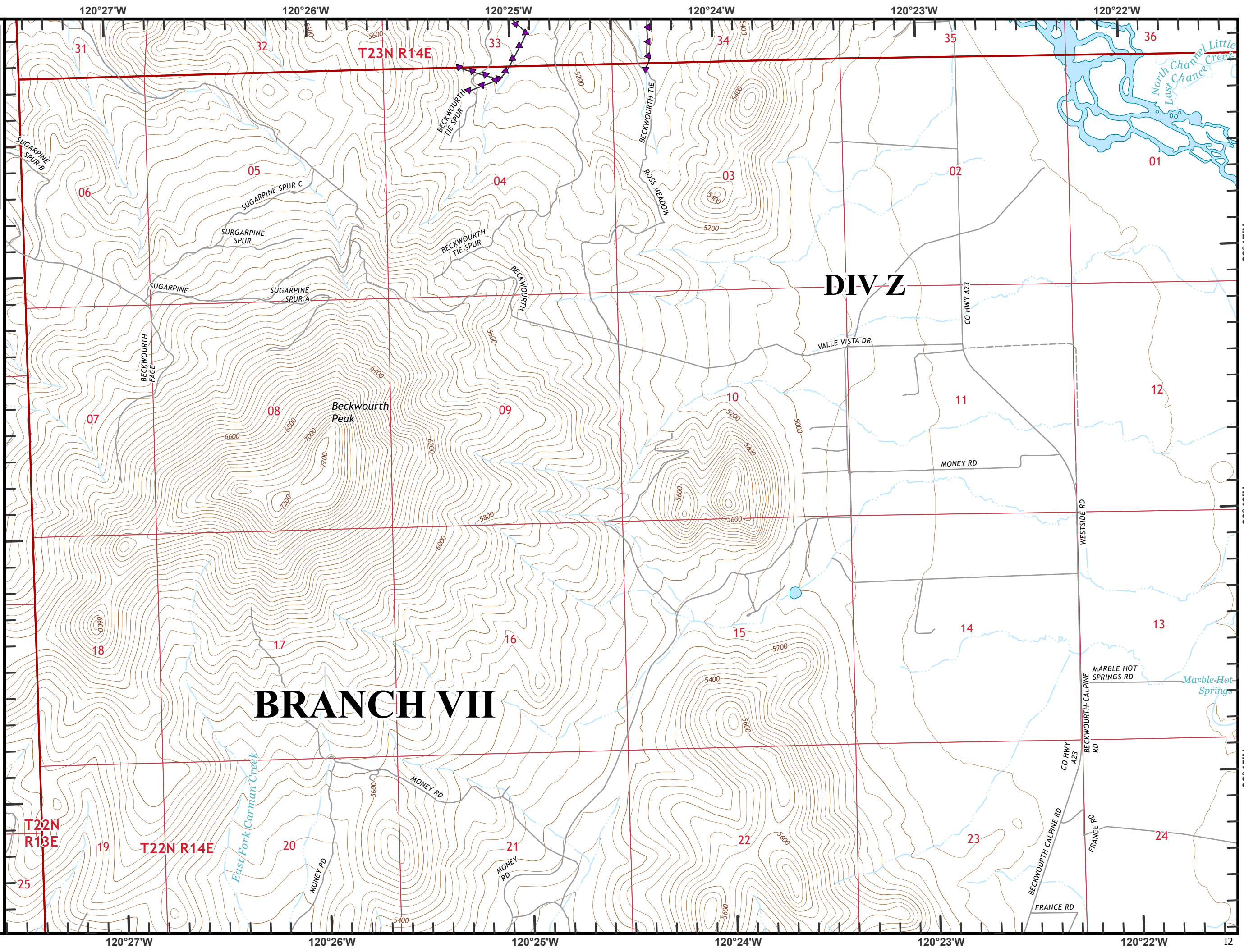


Beckwourth Complex  
CA-PNF-001064  
NAD83, Zone 10  
IAP Tiles  
07/16/2021  
Day Shift  
Branch VII  
Index Grid  
I2

▲ Sensitive Areas

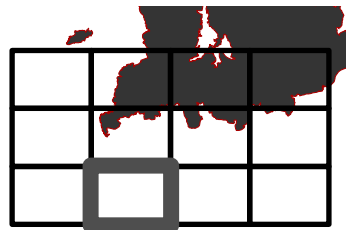


0 1/4 1/2  
Miles

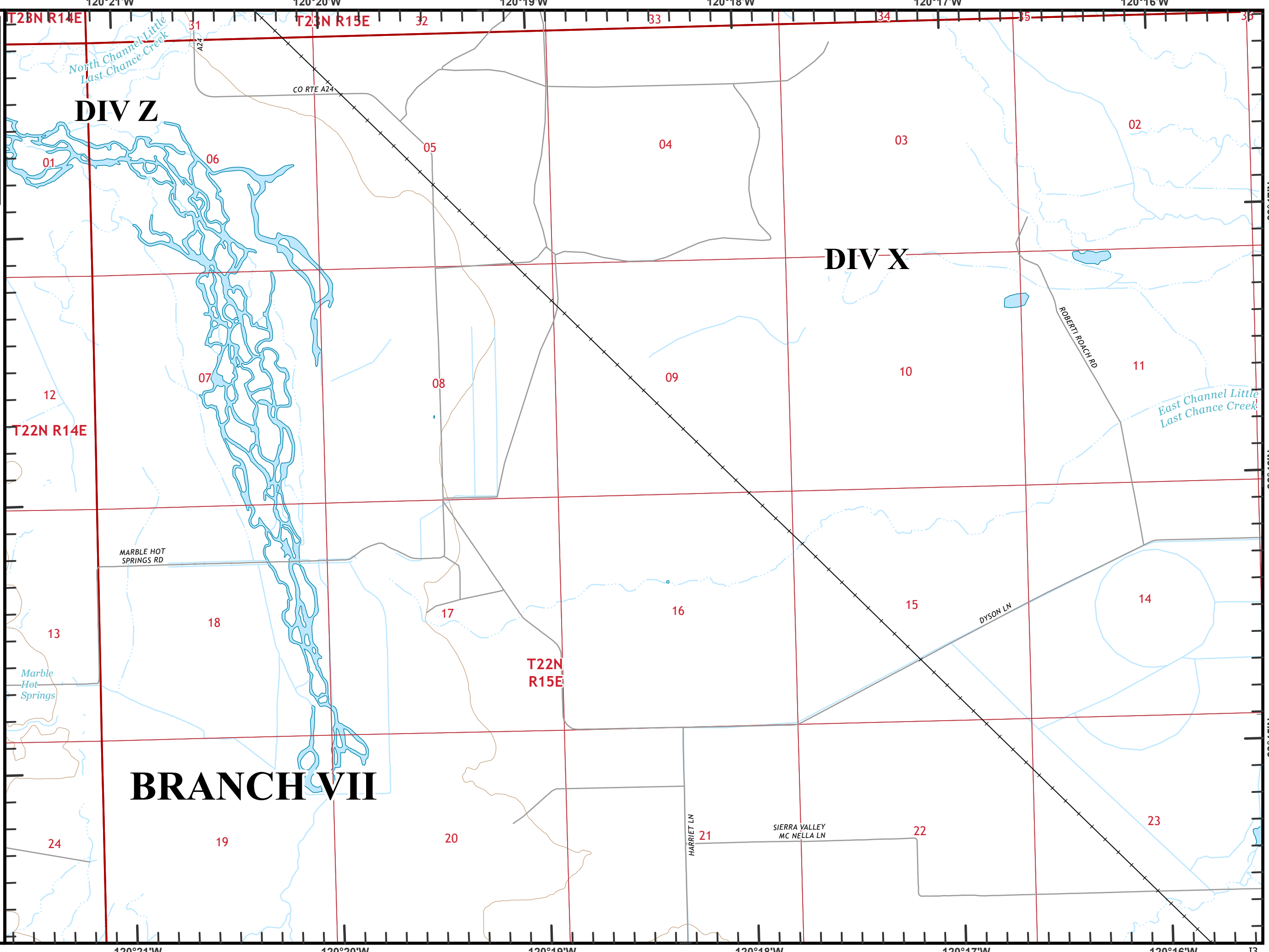


Beckwourth Complex  
CA-PNF-001064  
NAD83, Zone 10  
IAP Tiles  
07/16/2021  
Day Shift  
Branch VII  
Index Grid  
I3



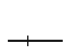
—+— Railroad

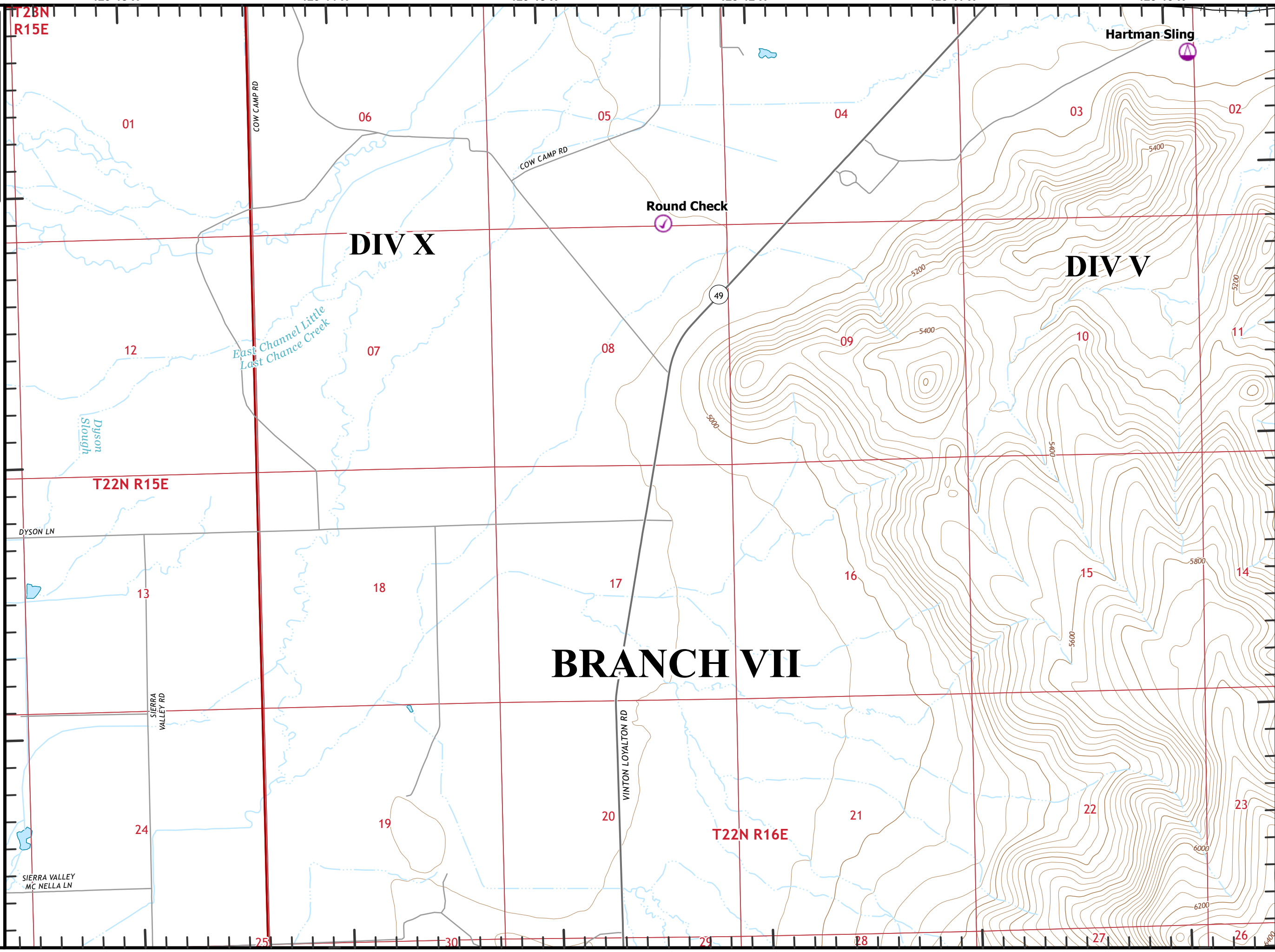
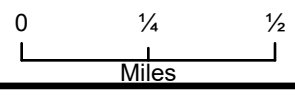
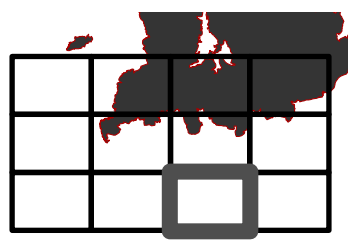


0 1/4 1/2  
Miles





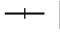
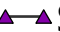
Beckworth Complex  
CA-PNF-001064  
NAD83, Zone 10  
IAP Tiles  
07/16/2021  
Day Shift  
Branch VII  
Index Grid  
I4

-  Check Point
-  Sling Site
-  Railroad



Beckworth Complex  
CA-PNF-001064  
NAD83, Zone 10  
IAP Tiles  
07/16/2021  
Day Shift  
Branch VII  
Index Grid  
I5

 Branch Break

-  Drop Point
-  Repeater
-  Railroad
-  Sensitive Areas



0 1/4 1/2  
Miles

