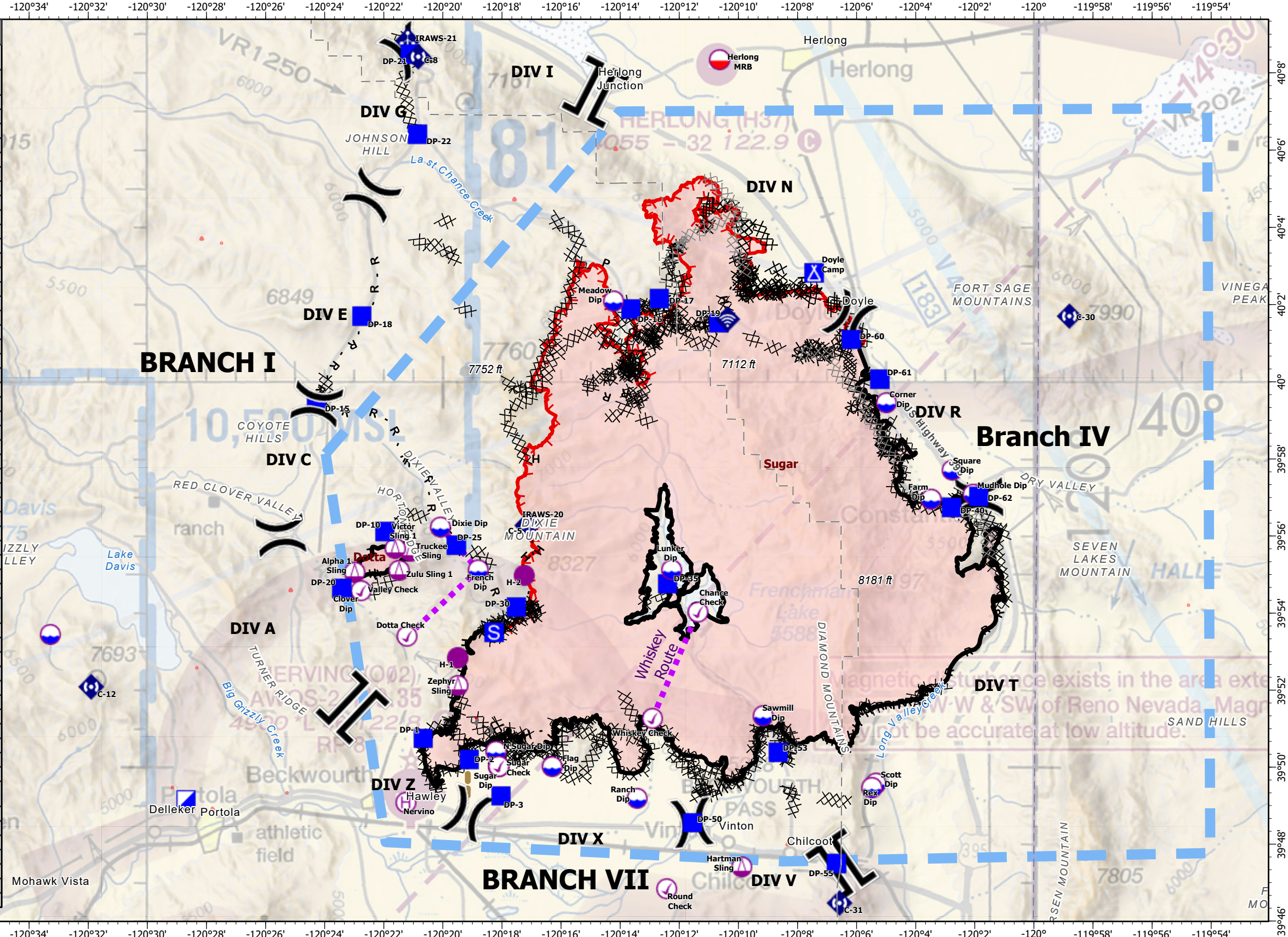


FC Point Type	Label	Comments	Latitude WGS84 DDM	Longitude WGS84 DDM
Check Point	Sugar Check	6000' Ceiling - Nervino to Sugar Dip	39° 50.020' N	120° 18.108' W
Check Point	Valley Check	7000' Ceiling - Nervino to Dotta Bridge	39° 54.580' N	120° 22.769' W
Check Point	Dotta Check		39° 53.397' N	120° 21.207' W
Check Point	Whiskey Check		39° 51.262' N	120° 12.912' W
Check Point	Chance Check		39° 54.028' N	120° 11.372' W
Check Point	Round Check		39° 46.835' N	120° 12.419' W
Dip Site	Sugar Dip		39° 50.020' N	120° 18.108' W
Dip Site	N Sugar Dip		39° 50.410' N	120° 18.198' W
Dip Site	Clover Dip		39° 54.622' N	120° 23.197' W
Dip Site			39° 53.443' N	120° 33.279' W
Dip Site	French Dip		39° 55.123' N	120° 18.804' W
Dip Site	Lunker Dip		39° 55.123' N	120° 12.260' W
Dip Site	Dixie Dip		39° 56.232' N	120° 20.083' W
Dip Site	Ranch Dip		39° 49.190' N	120° 13.420' W
Dip Site	Sawmill Dip		39° 51.330' N	120° 09.160' W
Dip Site	Mudhole Dip		39° 57.080' N	120° 02.050' W
Dip Site	Square Dip		39° 57.710' N	120° 02.770' W
Dip Site	Flag Dip		39° 50.011' N	120° 16.295' W
Dip Site	Corner Dip		39° 59.458' N	120° 04.992' W
Dip Site	Farm Dip		39° 56.959' N	120° 03.479' W
Dip Site	Scott Dip		39° 49.582' N	120° 05.344' W
Dip Site	Rex Dip		39° 49.466' N	120° 05.485' W
Dip Site	Meadow Dip		40° 02.089' N	120° 14.219' W
Drop Point	DP-1		39° 50.748' N	120° 20.667' W
Drop Point	DP-10		39° 56.118' N	120° 21.960' W
Drop Point	DP-20		39° 54.635' N	120° 23.413' W
Drop Point	DP-2		39° 50.200' N	120° 19.110' W
Drop Point	DP-3		39° 49.253' N	120° 18.030' W
Drop Point	DP-30		39° 54.153' N	120° 17.510' W
Drop Point	DP-35		39° 54.758' N	120° 12.399' W
Drop Point	DP-50		39° 48.554' N	120° 11.552' W
Drop Point	DP-53		39° 50.380' N	120° 08.654' W
Drop Point	DP-25		39° 55.757' N	120° 19.541' W
Drop Point	DP-15		39° 59.410' N	120° 24.272' W
Drop Point	DP-17		40° 02.154' N	120° 12.677' W
Drop Point	DP-55	DP-55	39° 47.491' N	120° 06.678' W
Drop Point	DP-16	DP-16	40° 01.886' N	120° 13.638' W
Drop Point	DP-19	Doyle Grade Rd and Sugar Loaf Rd	40° 01.533' N	120° 10.658' W
Drop Point	DP-40		39° 56.743' N	120° 02.783' W
Drop Point	DP-60		40° 01.097' N	120° 06.176' W
Drop Point	DP-61		40° 00.067' N	120° 05.214' W
Drop Point	DP-62		39° 57.025' N	120° 01.867' W
Drop Point	DP-21		40° 08.478' N	120° 21.103' W
Drop Point	DP-22		40° 06.413' N	120° 20.855' W
Drop Point	DP-18		40° 01.699' N	120° 22.744' W
Helibase	Stead		39° 40.391' N	119° 53.009' W
Helibase	Nervino		39° 49.081' N	120° 21.247' W
Helispot	H-1		39° 52.837' N	120° 19.497' W
Helispot	H-2		39° 54.976' N	120° 17.242' W
Incident Command Post			39° 49.151' N	120° 28.690' W
Mobile Retardant Base	Herlong MRB		40° 08.337' N	120° 10.637' W
Sling Site	Zulu Sling 1	Dotta Fire - DIV Z	39° 55.110' N	120° 21.480' W
Sling Site	Hartman Sling	Hartman Fire - FRRD	39° 47.407' N	120° 09.888' W
Sling Site	Alpha 1 Sling	Dotta Fire - Div A	39° 55.059' N	120° 22.984' W
Sling Site	Truckee Sling	Dotta Fire - Div V	39° 55.610' N	120° 21.100' W
Sling Site	Victor Sling 1	Dotta Fire - Div V	39° 55.672' N	120° 21.608' W
Sling Site	Zephyr Sling		39° 52.125' N	120° 19.490' W



Air Operations
Beckworth Complex
 CA-PNF-001064
 July 16, 2021
 0600 hrs



-)(Division Break
- || Branch Break
- Check Point
- Dip Site
- Mobile Retardant Base
- Helispot
- Helibase
- Sling Site
- Incident Command Post
- Drop Point
- Camp
- Staging Area
- Mobile Weather Unit
- Internet Access
- Repeater
- XX Completed Dozer Line
- ~ Completed Fuel Break
- H Completed Hand Line
- M Completed Mixed Construction Line
- P Completed Plow Line
- R Completed Road as Line
- XX Planned Dozer Line
- H Planned Hand Line
- Other
- Road Repair
- Temporary Flight Restriction
- Fire Edge
- Contained Line
- Wildfire Daily Fire Perimeter
- Flight Routes