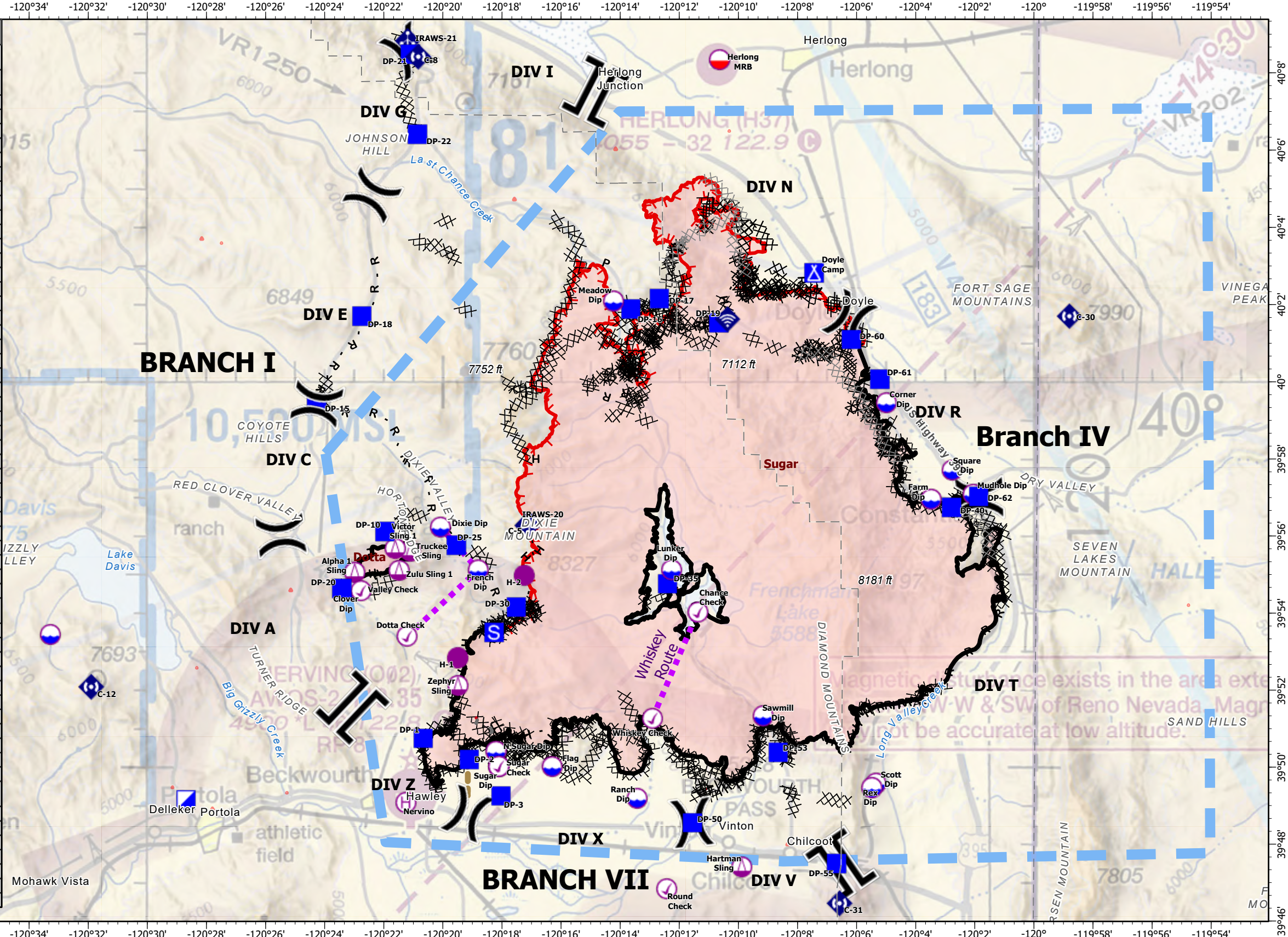


| FC Point Type | Label | Comments | Latitude WGS84 DDM | Longitude WGS84 DDM |
|-----------------------|----------------|---|--------------------|---------------------|
| Check Point | Sugar Check | 6000' Ceiling - Nervino to Sugar Dip | 39° 50.020' N | 120° 18.108' W |
| Check Point | Valley Check | 7000' Ceiling - Nervino to Dotta Bridge | 39° 54.580' N | 120° 22.769' W |
| Check Point | Dotta Check | | 39° 53.397' N | 120° 21.207' W |
| Check Point | Whiskey Check | | 39° 51.262' N | 120° 12.912' W |
| Check Point | Chance Check | | 39° 54.028' N | 120° 11.372' W |
| Check Point | Round Check | | 39° 46.835' N | 120° 12.419' W |
| Dip Site | Sugar Dip | | 39° 50.020' N | 120° 18.108' W |
| Dip Site | N Sugar Dip | | 39° 50.410' N | 120° 18.198' W |
| Dip Site | Clover Dip | | 39° 54.622' N | 120° 23.197' W |
| Dip Site | | | 39° 53.443' N | 120° 33.279' W |
| Dip Site | French Dip | | 39° 55.123' N | 120° 18.804' W |
| Dip Site | Lunker Dip | | 39° 55.123' N | 120° 12.260' W |
| Dip Site | Dixie Dip | | 39° 56.232' N | 120° 20.083' W |
| Dip Site | Ranch Dip | | 39° 49.190' N | 120° 13.420' W |
| Dip Site | Sawmill Dip | | 39° 51.330' N | 120° 09.160' W |
| Dip Site | Mudhole Dip | | 39° 57.080' N | 120° 02.050' W |
| Dip Site | Square Dip | | 39° 57.710' N | 120° 02.770' W |
| Dip Site | Flag Dip | | 39° 50.011' N | 120° 16.295' W |
| Dip Site | Corner Dip | | 39° 59.458' N | 120° 04.992' W |
| Dip Site | Farm Dip | | 39° 56.959' N | 120° 03.479' W |
| Dip Site | Scott Dip | | 39° 49.582' N | 120° 05.344' W |
| Dip Site | Rex Dip | | 39° 49.466' N | 120° 05.485' W |
| Dip Site | Meadow Dip | | 40° 02.089' N | 120° 14.219' W |
| Drop Point | DP-1 | | 39° 50.748' N | 120° 20.667' W |
| Drop Point | DP-10 | | 39° 56.118' N | 120° 21.960' W |
| Drop Point | DP-20 | | 39° 54.635' N | 120° 23.413' W |
| Drop Point | DP-2 | | 39° 50.200' N | 120° 19.110' W |
| Drop Point | DP-3 | | 39° 49.253' N | 120° 18.030' W |
| Drop Point | DP-30 | | 39° 54.153' N | 120° 17.510' W |
| Drop Point | DP-35 | | 39° 54.758' N | 120° 12.399' W |
| Drop Point | DP-50 | | 39° 48.554' N | 120° 11.552' W |
| Drop Point | DP-53 | | 39° 50.380' N | 120° 08.654' W |
| Drop Point | DP-25 | | 39° 55.757' N | 120° 19.541' W |
| Drop Point | DP-15 | | 39° 59.410' N | 120° 24.272' W |
| Drop Point | DP-17 | | 40° 02.154' N | 120° 12.677' W |
| Drop Point | DP-55 | DP-55 | 39° 47.491' N | 120° 06.678' W |
| Drop Point | DP-16 | DP-16 | 40° 01.886' N | 120° 13.638' W |
| Drop Point | DP-19 | Doyle Grade Rd and Sugar Loaf Rd | 40° 01.533' N | 120° 10.658' W |
| Drop Point | DP-40 | | 39° 56.743' N | 120° 02.783' W |
| Drop Point | DP-60 | | 40° 01.097' N | 120° 06.176' W |
| Drop Point | DP-61 | | 40° 00.067' N | 120° 05.214' W |
| Drop Point | DP-62 | | 39° 57.025' N | 120° 01.867' W |
| Drop Point | DP-21 | | 40° 08.478' N | 120° 21.103' W |
| Drop Point | DP-22 | | 40° 06.413' N | 120° 20.855' W |
| Drop Point | DP-18 | | 40° 01.699' N | 120° 22.744' W |
| Helibase | Stead | | 39° 40.391' N | 119° 53.009' W |
| Helibase | Nervino | | 39° 49.081' N | 120° 21.247' W |
| Helispot | H-1 | | 39° 52.837' N | 120° 19.497' W |
| Helispot | H-2 | | 39° 54.976' N | 120° 17.242' W |
| Incident Command Post | | | 39° 49.151' N | 120° 28.690' W |
| Mobile Retardant Base | Herlong MRB | | 40° 08.337' N | 120° 10.637' W |
| Sling Site | Zulu Sling 1 | Dotta Fire - DIV Z | 39° 55.110' N | 120° 21.480' W |
| Sling Site | Hartman Sling | Hartman Fire - FRRD | 39° 47.407' N | 120° 09.888' W |
| Sling Site | Alpha 1 Sling | Dotta Fire - Div A | 39° 55.059' N | 120° 22.984' W |
| Sling Site | Truckee Sling | Dotta Fire - Div V | 39° 55.610' N | 120° 21.100' W |
| Sling Site | Victor Sling 1 | Dotta Fire - Div V | 39° 55.672' N | 120° 21.608' W |
| Sling Site | Zephyr Sling | | 39° 52.125' N | 120° 19.490' W |



Air Operations
Beckworth Complex
 CA-PNF-001064
 July 16, 2021
 0600 hrs



- () Division Break
- || Branch Break
- Check Point
- Dip Site
- Mobile Retardant Base
- Helispot
- Helibase
- Sling Site
- Incident Command Post
- Drop Point
- Camp
- Staging Area
- Mobile Weather Unit
- Internet Access
- Repeater
- ⊗ Completed Dozer Line
- ⊗ Completed Fuel Break
- H Completed Hand Line
- M Completed Mixed Construction Line
- P Completed Plow Line
- R Completed Road as Line
- ⊗ Planned Dozer Line
- H Planned Hand Line
- Other
- Road Repair
- Temporary Flight Restriction
- Fire Edge
- Contained Line
- Wildfire Daily Fire Perimeter
- Flight Routes

