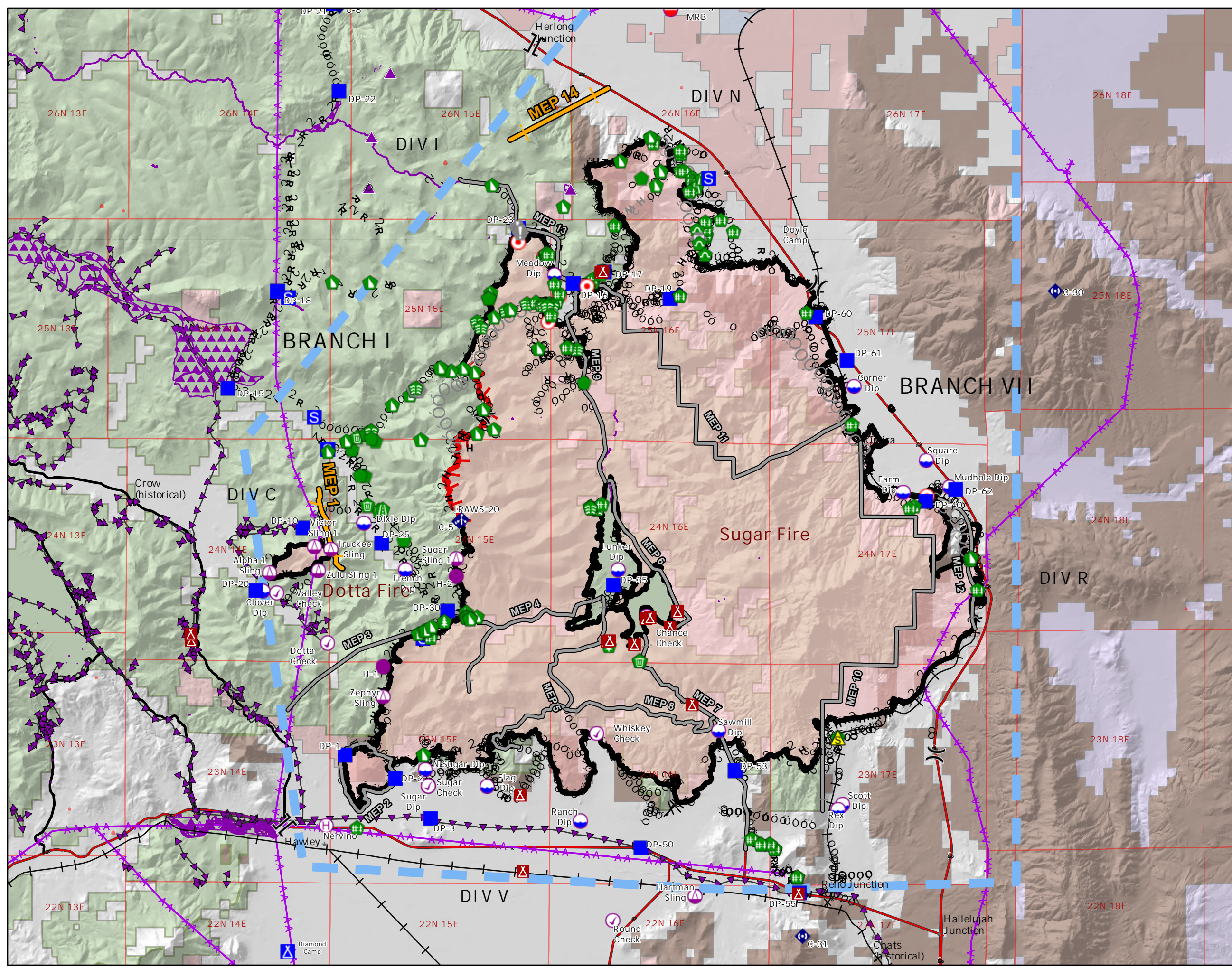


OPERATIONS Beckworth Complex


CA-PNF-001064

July 22, 2021


0600 hrs




- | | | | |
|--|-----------------------|--|-------------------------|
| | Branch Break | | Structure Wrap |
| | Division Break | | Stream Crossing |
| | Check Point | | Road Repair |
| | Dip Site | | Resource Location |
| | Mobile Retardant Base | | Repair Point |
| | Hellspace | | Hazard Tree |
| | Helibase | | Fence - Cut/Damaged |
| | Sling Site | | Dozer Push |
| | Drop Point | | Culvert |
| | Camp | | Clean Up Area |
| | Staging Area | | Mobile Weather Unit |
| | Hot Spot - Spot Fire | | Internet Access |
| | Value at Risk | | Repeater |
| | Gate | | Safety Zone |
| | Completed Dozer Line | | Fence |
| | Completed Fuel Break | | Mgmt Action Point |
| | Completed Hand Line | | Temp Flight Restriction |
| | Completed Mixed Line | | Fire Edge |
| | Completed Plow Line | | Contained Line |
| | Completed Road Line | | Transmission Lines |
| | Planned Dozer Line | | Mgmt Evaluation Pt |
| | Planned Hand Line | | Invasive Spp |



U.S. FOREST SERVICE
DEPARTMENT OF AGRICULTURE



Miles



0 2 4 8