

INCIDENT ACTION PLAN BECKWOURTH COMPLEX

CA-PNF-1064
P5N4MK (0511)

Thursday



OPERATIONAL PERIOD


7/22/2021 0600
to
7/22/2021 1800



SCAN ME

Intentionally Left Blank

ORGANIZATION ASSIGNMENT LIST (ICS 203)

1. Incident Name: Beckwourth Complex		2. Operational Period: Date From: 7/22/2021 Time From: 0600		Date To: 7/22/2021 Time To: 1800	
3. Incident Commander(s) and Command Staff:			7. Operation Section:		
IC/UC's	Rick Young	Operations	Alex McBath		
Deputy	Dustan Mueller, Carlton Joseph	Deputy Operations			
Safety Officer	David Welch, Brian Savage	Night Ops			
Information Officer	Nathan Judy	Planning Ops	Don Freguilla, Corey Rose, Ernie Villa		
Liaison Officer	Don Smith(T)	Branch	I	Steve Burns Jesse Knox(T)	
4. Agency/Organization Representatives:		Division/Group	C	Kenny Griffin, Robert Kilpatrick(T)	
USFS ONF AA	Chris Carlton, Matt Jedra, Jeremy Dorsey	Division/Group	I	Cheveyo Munk, Danny Garcia(T)	
		Division/Group	Repair	Alan Whistler, George Chambers(T)	
USFS Covid 19 Advisor	Francisco Rico, Allison Sanger	Division/Group			
BLM AA	Ken Collum CCD, Emily Ryan NOD	Division/Group			
BLM NOD	Grant Gifford	Division/Group			
CALFIRE	Eric Ewing	Branch	VII	Kim Olson	
Plumas County Sheriff	Chad Herman	Division/Group	N	Joe Reyes	
CHP	Erik Egide	Division/Group	R	Kevin Marino	
CAL OES	Steve Sjotvedt	Division/Group	V	Nathan Suida, Lewis Prevatke(T)	
CCC	Araceli Loayza	Division/Group	BLM DPA Suppression Repair	George Chambers(T)	
5. Planning Section:				Branch	
Chief	Jason Schillinger, Rick Leuck, Robert Ashby(T), Ryan Wakefield(T)	Division/Group			
Resource Unit	Ryan Resnick, Harry Kelmanson, Logan Brown, Robert Villa(T), Marisa Williams(T)	Division/Group			
		Division/Group			
		Division/Group			
Status Check-In	Michelle Douglass, Yessenia Tufnell, Matthew Haywood, Kelly Smyth(T)	Division/Group			
		Division/Group			
Situation Unit	Tad Morelock, Josh Massie(T), Ray Rook(T)	Division/Group			
		Branch			
		Division/Group			
Documentation Unit	Johanna Ostling	Division/Group			
Demobilization Unit	Dave Loop, Mike Melton	Division/Group			
GISS	Dawn Hutchinson, Naomi Chow(T)	Division/Group			
DPRO		Division/Group			
FBAN	Matt Brown	Branch			
IMET	Lamont Bain	Division/Group			
LTAN	Jeff Shelton, Rob Scott(T)	Division/Group			
Training Tech Spec		Division/Group			
ITSS	Jim Youngblood, Rigo Martinez	Division/Group			
HRSP	Andrea Cabida, Ben Wexler(T)	Division/Group			
READ	Jake Martin	Division/Group			
6. Logistics Section		Air Operations Branch		Director:	John Keesee
Chief	Brett Shurr, Ken Kumpe, Jim Eckroth, Rickie Crowther(T)	Air Support Group Supervisor		Cole Wallace, Ray Ucha	
		Air Tactical Group Supervisor			
Supply Unit	Michael Bradford	Helibase Manager			
Facilities Unit	Damon Norvell	8. Finance/Administration Section:			
Base Camp Manager	Crystal Danheiser	Chief	Teresa Fork		
Food Unit	Mitch Stiles	Time Unit	Janice Brown		
Ground Support Unit	Zeb Wilcox	Equipment Time	Holly Cardoza, Susan Cady(T)		
Communications Unit	Ken Earle, Dolly Justin-Silveria, Kevin Throop	Personnel Time	Carla Hamlett		
		Procurement Unit			
Medical Unit	Jeff Carlon, Robert Russell	Comp/Claims Unit	Elaine Downing		
Ordering	Kate Morris	Cost Unit	Roger Siemers		
Prepared By: Name:	Ryan Wakefield	Position/Title:	PSC2(T)	Signature:	
ICS 203		Date/Time:	7/21/2021 2300 hours		



INCIDENT Weather Forecast



FORECAST NO: 16
PREDICTION FOR: Thu 0600 – Thu 1800
SHIFT DATE: July 22-23, 2021
FORECAST ISSUED: 1800, July 21, 2021

NAME OF FIRE: Beckwourth Complex
UNIT: Plumas National Forest
Incident Meteorologist: Lamont Bain

*****Red Flag conditions through this evening*****

WEATHER DISCUSSION: After humidity recovery in the 20 to 30 percent range another windy day is on tap for Thursday. **A critical fire weather threat with Red Flag conditions** is expected to unfold today and this afternoon with morning terrain driven winds becoming southwesterly and westerly through the afternoon and increasing in speed. Confidence remains high that sustained winds of 20 to 25 mph with gusts to near 35 mph are reasonable. The greatest gusts are expected along the higher terrain with subdued wind speeds in sheltered regions. Afternoon humidity will fall down into the single digits with values as low as 8-10 percent.

WEATHER FORECAST for Thursday:

Weather obs around fire area



WEATHER: A few clouds, but shading due to smoke and haze mainly at ICP, Div N and I. **LAL: 1**
TEMPERATURES: Valleys/Lower Slopes: 84-94° Mid-Slopes/Ridges: 76-86°
MIN HUMIDITY: 8-15% **HAINES INDEX:** 5

20 FT WINDS:

RIDGETOP - Southwest to west-southwest winds 15-20 mph increasing to 20-25 mph by the afternoon hours. Gusts to around 35 mph.

SLOPE/VALLEY - Upslope/upvalley 3-8 mph in the morning, becoming southwest to west 10-17 mph with gusts near 25 mph in the afternoon. Variable wind directions in drainages and sheltered areas.

STABILITY/INVERSION: Shallow inversion, lifting by 9-11 AM. Mixing heights around 9,000 feet.

WEATHER FORECAST for Thursday NIGHT:

WEATHER: Mostly clear, patchy smoke/haze. **LAL: 1.**

TEMPERATURES: Valleys/Lower Slopes: 50-55° Mid-Slopes/Ridges: 55-60°

MAX HUMIDITY: Valleys/Lower Slopes: 20-30% Mid-Slopes/Ridges: 25-35%

20 FT WINDS:

RIDGETOP - West-southwest winds 15-20 mph with gusts to around 25 mph in the early evening, gradually decreasing after. Downslope/downvalley flow around 3-8 mph by 11 PM.

SLOPE/VALLEY - West-southwest 10-15 mph with gusts to 20 mph in the evening quickly becoming downslope/downvalley 1-6 mph around 11 PM.

STABILITY/INVERSION: Becoming more stable overnight with inversion developing around 10-11 PM.

OUTLOOK for Friday through Monday: Wind speeds will diminish this weekend with more daily terrain driven wind directions. Portions of Branch VII will experience more upslope/northerly flow with speeds between 5 and 10 mph with 15-20 mph gusts. Branch I will remain in a westerly to west-northwest flow regime with speeds of 10 to 15 mph. A gust to 20-25 mph will be possible. Afternoon RH will fall to near 10% on Friday with min RH closer to 15% Sat/Sun. Overnight recovery will remain poor, with values between 25 and 35 percent.

FIRE BEHAVIOR FORECAST

FORECAST NUMBER: 017	TYPE OF FIRE: Wildfire Full Suppression
FIRE NAME: Beckwourth Complex (Sugar Fire)	OPERATIONAL PERIOD: Day Shift 07/22/2021
DATE ISSUED: 07-21-21	TIME ISSUED: 2100
UNIT: CA-PNF-001064	SIGNED: <u>Matt Brown</u>
	Typed/printed: Matt Brown FBAN

INPUTS

WEATHER SUMMARY:

*****Red Flag for dry fuels and windy conditions today*****

Temperature: 76-94 daytime, RH: 8-15% daytime, 20-30% overnight
Ridge-top Winds: SW 15-20 increasing to 20-25, gusts to 35 mph by afternoon
Valley/Slope Winds: Terrain Driven 3-8 mph, SW 8-15 by afternoon. Overnight WSW 10-15 mph decreasing to 1-6 mph in the night. Inversion mixing out of the valleys 9-11 am and then developing again around 10PM.

OUTPUTS

FIRE BEHAVIOR

GENERAL:

The ERCs continued to set records due to warmer and drier conditions. 1000 hr fuel moisture is less than 7%. Live fuels remain critical for most species and are available to burn. The fire has the potential to burn up to 3-4 miles in the direction of spread when aligned with wind. Plume domination is unlikely with an escape since it will be mostly wind driven. With the breezier conditions, a pyrocumulus will be unlikely to form. Fuels remain exceptionally receptive to spotting. The burn period will begin after 0900 hours in the protected drainages, but in exposed areas expect the burn period to start with shift change.

Probability of ignition will run about 80-100% depending on aspect and shading. As the weather clears the PIG will approach 100% with receptive fuels in full sun.

SPECIFIC:

West Side Divisions: These divisions will experience potentially the most adverse winds depending on the shape of the country. Where the line makes a dog-leg to the east, just above Ramelli Creek, will be a focal point of the SW wind pressure and spot potential. Incomplete burning, burned-through retardant, and on-going mop-up operations continue to have vulnerabilities at this location. Escape in this area will result in high flame lengths and substantial rates of spread with spotting up to 1 mile. The heavy fuel loading and lack of fire history will make direct attack efforts difficult.

All other Divisions: These divisions will experience mostly favorable winds. Complete burns with good consumption in most divisions have reduced threats to the line. Consumption in green islands will accelerate as very dry and windy conditions continue; however, IR scans have these well within the burn. Securing and moping up the rest of the perimeter has eliminated significant threats to the remainder of the fire area.

AIR OPERATIONS:

Air operations will have somewhat smoky skies with no expected operational limits on timing of missions unless smoke from the Dixie Fire obscures visibility.

SAFETY

Watch for stump holes, smoldering ground fuels and other hazards during mop-up operations. Plan to be a part of IA and understand potential fire behavior if starts occur outside the current perimeter, especially in different fuel types.

Fuels Advisory



PNF Pocket Card East



PNF Pocket Card Central (Dixie Fire)



Beckwourth Complex– Safety Message

INCIDENT #CA-PNF-001064

DATE: 07-22-21 TIME: 0600-1800 Day Shift

Make a Safety Difference “Avoid Complacency”

- As a supervisor, provide constant and relentless oversight.
- ***Stay focused on the task at hand, all the time!***
- Come up with a safer way to perform a risky assignment.
- Discuss situations that might cause a nearmiss.
- Never tolerate “Hey, watch this!”
- Discuss the effects of fatigue and how to mitigate the effects of fatigue.
- While in the fire zone, wear your hardhat when you leave the vehicle.
- Have a purpose in what you do.

Keep Your Head in the Game!

Covid-19

- Be Smart! Stay Apart! Maintain CDC social distancing guidelines when feasible
- Practice good hygiene. Wash hands often and avoid touching your face
- Cover your nose and mouth with a facial covering and cough into your elbow if needed
- Monitor your health. If you have fever, shortness of breath, coughing, sneezing or any other Covid-19 related symptom, tell a supervisor and maintain physical distancing

High Winds Predicted!

Unstable snags may fall during periods of gusty winds. Trees that have compromised root systems due to fire, may fall without warning.

Watch where you park your trucks. Remember to look up for hazard trees and widow makers!

Gusty winds may present challenges when driving large vehicles. Keep both hands on the wheel.

Prepared by: Dave Welch

California Interagency
Incident Management
Team 5



Intentionally Left Blank

ASSIGNMENT LIST (ICS 204 WF)

CONTROLLED UNCLASSIFIED
INFORMATION/BASIC

1. Incident Name: Beckwourth Complex	2. Operational Period: Date From: 07/22/21 Date To: 07/22/21 Time From: 0600 Time To: 1800	3. Branch Division I C
---	---	---

4. Operations Personnel:		Page 1 of 1	Charlie
Operations Section Chief: Alex McBath	Night Ops:		
Branch Director: Steve Burns Jesse Knox(T)	Branch Safety: SOFR Jeff Birg		
Division/Group Supervisor: Kenny Griffin, Robert Kilpatrick(T)	Air Attack:		

5. Resources Assigned:							
Resource Identifier	ALS	LWD	Leader	Personnel	Request #	Hours	Reporting Location
HC2 PVT FRANCO REFORESTATION	No	7/23	FLORENCIO FRANCO	20	C-44	0600-1800	DIAMOND CAMP
ENG3 TAHOE 331	No	7/25	DANNY RASMUESSON	5	E-308	0600-1800	DIAMOND CAMP
WTT1 PVT TREASURE VALLEY	No	7/26	STEVE KEUTER	2	E-280	0600-1800	DIAMOND CAMP
WTS1 JCF 2541	No	7/25	AARON ANTUS	1	E-286	0600-1800	DIAMOND CAMP
WTS2 PVT PRECISION 49	No	7/25	MIKE DAINAUSKUS	1	E-81	0600-1800	DIAMOND CAMP
WTS2 PVT FOOTPRINTS	No	7/28	TAMMY NOXON	1	E-92	0600-1800	DIAMOND CAMP
WTS2 PVT FRANK TRUCKING	No	7/25	FRANK ZABEL	1	E-93	0600-1800	DIAMOND CAMP
WTS2 PVT K & B WATER TRUCK	No	7/25	KYLE LAWLESS	1	E-95	0600-1800	DIAMOND CAMP
WTS2 PVT CATTLE LACK RANCH	No	7/29	EUGENE GRAHAM	1	E-313	0600-1800	DIAMOND CAMP
EXCA PVT DIAMOND RING RANCH	No	7/24	JOHN BRITTON	2	E-222	0600-1800	DIAMOND CAMP
EXCA2 PVT SHUMAS FIRE	No	7/24	JUSTIN SCHULTS	2	E-223	0600-1800	DIAMOND CAMP
GRD2 PVT LAMB UNLIMITED	No	7/30	JUSTIN BROWER	3	E-432	0600-1800	DIAMOND CAMP
GRD PVT OILARS AG SERVICES	No	7/29	DAN RAMIREZ	1	E-433	0600-1800	DIAMOND CAMP
TFLD ALVES	No	7/25	FRANK ALEVES	1	O-156	0600-1800	DIAMOND CAMP
TFLD SCHINDLER	No	7/25	DAN SCHINDLER	1	O-252	0600-1800	DIAMOND CAMP
TFLD(T) OSTERLAND	No	7/27	BEN OSTERLAND	1	O-116	0600-1800	DIAMOND CAMP
HEQB MARSHALL	No	7/25	DAN MARSHALL	1	O-261	0600-1800	DIAMOND CAMP
HEQB(T) DALE	No	7/21	WILL DALE	1	O-394	0600-1800	DIAMOND CAMP


6. Work Assignments:

- Mop up to the extent necessary to maintain containment.
- Provide structure defense and point protection for Dixie Valley.

7. Special Instructions:

- Backhaul all trash and supplies.
- Answer calls for service.

8. Communications							
Name	Ch	Function	Rx Freq	Rx Tone	Tx Freq	Tx Tone	Notes
ADMIN T1	1	COMMAND	171.4250N	0.0	163.1625N	110.9	BLACK MTN
ADMIN T2	2	COMMAND	171.4250N	0.0	163.1625N	123.0	SAGE MTN
ADMIN T5	3	COMMAND	171.4250N	0.0	163.1625N	146.2	KETTLE ROCK
ADMIN T7	4	COMMAND	171.4250N	0.0	163.1625N	167.9	DIXIE MTN
NIFC T2	5	TACTICAL	168.2000N	0.0	168.2000N	0.0	INITIAL ATTACK
A/G CMD	14	A/G CMD	169.2875N	0.0	169.2875N	0.0	AIR-GROUND COMMAND
CALCORD	15	MEDICAL	156.0750N	156.7	156.0750N	156.7	AIR-GROUND MEDICAL
GUARD 22	16	AIRGUARD	168.6250N	0.0	168.6250N	110.9	EMERGENCY ONLY

9. Prepared by: Name: Logan Brown RESL Signature: 

ICS 204 Date/Time: 7/21/2021 2200 Personnel Count: 46

Intentionally Left Blank

ASSIGNMENT LIST (ICS 204 WF)

CONTROLLED UNCLASSIFIED
INFORMATION//BASIC

1. Incident Name: Beckwourth Complex		2. Operational Period: Date From: 07/22/21 Date To: 07/22/21 Time From: 0600 Time To: 1800			3. Branch Division I I Page 1 of 2 India	
4. Operations Personnel:						
Operations Section Chief: Alex McBath			Night Ops:			
Branch Director: Steve Burns Jesse Knox(T)			Branch Safety: SOFR Jeff Birg			
Division/Group Supervisor: Cheveyo Munk, Danny Garcia(T)			Air Attack:			
5. Resources Assigned:						
Resource Identifier	ALS	LWD	Leader	Personnel	Request #	Hours Reporting Location
HC1 BECKWOURTH IHC	No	7/28	MIKE WINTCH	20	C-92	0600-1800 DIAMOND CAMP
HC2I FIRESTORM 15B	No	7/29	LEVI CARDIFF	19	C-41	0600-1800 DIAMOND CAMP
HC2IA DIAMOND MOUNTAIN IHC	No	7/24	DAN DOBYNS	20	C-85	0600-1800 DIAMOND CAMP
HC2IA FOLSOM LAKE	No	7/25	JASON SCHROEDER	16	C-83	0600-1800 DIAMOND CAMP
HC2 PVT BLUE MOUNTAIN CREW 5	No	7/23	ANTONIO LEON	20	C-48	0600-1800 DIAMOND CAMP
ENG3 S/T 6604C	Yes	7/23	JOE COLVIN	27	E-136	0600-1800 DIAMOND CAMP
ENG3 S/T CNF 6633C	No	7/23	JOEL MORTIER	27	E-137	0600-1800 DIAMOND CAMP
ENG3 BLM 8337	No	7/25	GEORGE JOLICOVER	5	E-357	0600-1800 DIAMOND CAMP
ENG3 PVT AMERICAN WILDFIRE	No	7/27	NIKLAWS	3	E-382	0600-1800 DIAMOND CAMP
ENG3 PVT TIMBERLINE 333	No	7/27	JEROME ANTONIO	3	E-389	0600-1800 DIAMOND CAMP
ENG3 8430	No	7/29	ZACH MCGARR	4	E-425	0600-1800 DIAMOND CAMP
ENG5 PVT FORREST FIRE	No	7/27	AARON VELA	3	E-427	0600-1800 DIAMOND CAMP
ENG6 RWP652	No	7/24	DANIEL REESE	4	E-213	0600-1800 DIAMOND CAMP
ENG6 PVT L&A WILDFIRE	No	7/28	KEN ARINGDALE	3	E-422	0600-1800 DIAMOND CAMP
ENG6 PVT GRAYBACK E1	No	7/29	JOHN FISH	3	E-426	0600-1800 DIAMOND CAMP
DOZ3 PVT JUNGWIRTH JR	No	7/22	JERRY JUNGWIRTH	2	E-158	0600-1800 DIAMOND CAMP
DOZ3 PVT MILE HIGH MILL	No	8/2	BONNIE JOHNSON	3	E-219	0600-1800 DIAMOND CAMP
WTT1 PVT G&N	No	7/24	NEAL GILLIGAN	2	E-144	0600-1800 DIAMOND CAMP
6. Work Assignments:						
<ul style="list-style-type: none"> - Mop up to the extent necessary to maintain containment. - Provide structure defense and point protection as needed. - Prepare for tactical firing operations. 						
7. Special Instructions:						
<ul style="list-style-type: none"> - Backhaul all trash and supplies. - Answer calls for service. - Identify IA resources. 						
8. Communications						
Name	Ch	Function	Rx Freq	Rx Tone	Tx Freq	Tx Tone Notes
ADMIN T1	1	COMMAND	171.4250N	0.0	163.1625N	110.9 BLACK MTN
ADMIN T2	2	COMMAND	171.4250N	0.0	163.1625N	123.0 SAGE MTN
ADMIN T5	3	COMMAND	171.4250N	0.0	163.1625N	146.2 KETTLE ROCK
ADMIN T7	4	COMMAND	171.4250N	0.0	163.1625N	167.9 DIXIE MTN
R5 T4	6	TACTICAL	166.5500N	0.0	166.5500N	0.0
A/G CMD	14	A/G CMD	169.2875N	0.0	169.2875N	0.0 AIR-GROUND COMMAND
CALCORD	15	MEDICAL	156.0750N	156.7	156.0750N	156.7 AIR-GROUND MEDICAL
GUARD 22	16	AIRGUARD	168.6250N	0.0	168.6250N	110.9 EMERGENCY ONLY
9. Prepared by: Name:						
Logan Brown			RESL		Signature:	
ICS 204		Date/Time: 7/21/2021 2200		Personnel Count: 184		

ASSIGNMENT LIST (ICS 204 WF)

CONTROLLED UNCLASSIFIED
INFORMATION//BASIC

1. Incident Name: Beckwourth Complex	2. Operational Period: Date From: 07/22/21 Date To: 07/22/21 Time From: 0600 Time To: 1800	3. Branch Division I I Page 2 of 2 India
---	---	--

4. Operations Personnel:	
Operations Section Chief: Alex McBath	Night Ops:
Branch Director: Steve Burns Jesse Knox(T)	Branch Safety: SOFR Jeff Birg
Division/Group Supervisor: Cheveyo Munk, Danny Garcia(T)	Air Attack:

5. Resources Assigned:							
Resource Identifier	ALS	LWD	Leader	Personnel	Request #	Hours	Reporting Location
WTT1 PVT LOOMIS FIRE CONTROL	No	7/25	JEAN LOOMIS	2	E-145	0600-1800	DIAMOND CAMP
WTT1 SOUTH ARKANSAS	No	7/24	DAVID DEPETRO	2	E-150	0600-1800	DIAMOND CAMP
WTT1 PVT DIETZ 106	No	7/24	DAVID RICHARDSON	1	E-185	0600-1800	DIAMOND CAMP
WTT1 GARDEN VALLEY	No	7/24	CHARLES FROST	1	E-269	0600-1800	DIAMOND CAMP
WTT2 STF WT 212	No	7/23	JAMES BAKER	1	E-142	0600-1800	DIAMOND CAMP
WTS2 PVT BAY AREA 34	No	7/23	MARCUS LEMA	1	E-30	0600-1800	DIAMOND CAMP
TFLD (T) WILLBURN	No	7/25	JAMIE WILLBURN	1	O-186	0600-1800	DIAMOND CAMP
HEQB TOROSIAN	No	7/24	BRIAN TOROSIAN	1	O-262	0600-1800	DIAMOND CAMP
REMS2	No	7/21	DANNY GIVVIN	4	O-357	0600-1800	DIAMOND CAMP
EMPF DEYOUNG	Yes	7/25	DAN DEYOUNG	1	O-279	0600-1800	DIAMOND CAMP
EMPF BAVERY	Yes	7/25	ADRIAN BAVERY	1	O-286	0600-1800	DIAMOND CAMP
EMPF VASQUEZ	Yes	7/25	SCOTT VASQUEZ	1	O-300	0600-1800	DIAMOND CAMP
EMPF POLLOCK	Yes	7/26	LARRY POLLOCK	1	O-379	0600-1800	DIAMOND CAMP

6. Work Assignments:

- Mop up to the extent necessary to maintain containment.
- Provide structure defense and point protection as needed.
- Prepare for tactical firing operations.

7. Special Instructions:

- Backhaul all trash and supplies.
- Answer calls for service.
- Identify IA resources.

8. Communications							
Name	Ch	Function	Rx Freq	Rx Tone	Tx Freq	Tx Tone	Notes
ADMIN T1	1	COMMAND	171.4250N	0.0	163.1625N	110.9	BLACK MTN
ADMIN T2	2	COMMAND	171.4250N	0.0	163.1625N	123.0	SAGE MTN
ADMIN T5	3	COMMAND	171.4250N	0.0	163.1625N	146.2	KETTLE ROCK
ADMIN T7	4	COMMAND	171.4250N	0.0	163.1625N	167.9	DIXIE MTN
R5 T4	6	TACTICAL	166.5500N	0.0	166.5500N	0.0	
A/G CMD	14	A/G CMD	169.2875N	0.0	169.2875N	0.0	AIR-GROUND COMMAND
CALCORD	15	MEDICAL	156.0750N	156.7	156.0750N	156.7	AIR-GROUND MEDICAL
GUARD 22	16	AIRGUARD	168.6250N	0.0	168.6250N	110.9	EMERGENCY ONLY

9. Prepared by: Name:	Logan Brown	RESL	Signature:
ICS 204	Date/Time: 7/21/2021	2200	Personnel Count: 18

ASSIGNMENT LIST (ICS 204 WF)

CONTROLLED UNCLASSIFIED
INFORMATION//BASIC

1. Incident Name:	2. Operational Period:	3. Branch	Division
Beckwourth Complex	Date From: 07/22/21 Date To: 07/22/21 Time From: 0600 Time To: 1800	I	Repair

4. Operations Personnel:		Page 1 of 1
Operations Section Chief: Alex McBath	Night Ops:	
Branch Director: Steve Burns Jesse Knox(T)	Branch Safety: SOFR Jeff Birg	
Division/Group Supervisor: Alan Whistler, George Chambers(T)	Air Attack:	

5. Resources Assigned:							
Resource Identifier	ALS	LWD	Leader	Personnel	Request #	Hours	Reporting Location
HC2 PVT FRANCO REFORESTATION	No	7/23	FLORENCIO FRANCO	20	C-44	0600-1800	DIAMOND CAMP
HC2 PVT R&R CONTRACTING 61	No	7/24	CHRISTIAN CASTRO	20	C-61	0600-1800	DIAMOND CAMP
HC2 PVT PACIFIC COAST	No	7/30	JESSE MIRICLE	20	C-99	0600-1800	DIAMOND CAMP
ENG3 PVT VULCAN FIRE 22	No	7/26	ADAM TIEMAN	3	E-381	0600-1800	DIAMOND CAMP
MAST2 PVT GRAHAM MASTICATOR	No	7/27	REN BURNS	2	E-392	0600-1800	DIAMOND CAMP
MAST PVT NORTH STATE EQUIPMENT	No	7/28	JOSH VIBERG	2	E-393	0600-1800	DIAMOND CAMP
CHIP3 PVT WOOD CHUCK	No	8/1		3	E-466	0600-1800	DIAMOND CAMP
CHIP3 PVT VENTURES	No	8/1		3	E-467	0600-1800	DIAMOND CAMP
HEQB URRUTIA	No	7/25	FELIX URRUTIA	1	O-260	0600-1800	DIAMOND CAMP
HEQB ROSALES	No	7/31	GILBERT ROSALES	1	O-590	0600-1800	DIAMOND CAMP
HEQB GUERRERO	No	7/30	RAMIRO GUERRERO	1	O-620	0600-1800	DIAMOND CAMP
EMPF(T) BURCH	No	7/24	TREVOR BURCH	1	O-283	0600-1800	DIAMOND CAMP
EMPF(T) PEDROZA	No	7/25	OLIVER PEDROZA	1	O-285	0600-1800	DIAMOND CAMP

6. Work Assignments:
- Implement suppression repair plan.

7. Special Instructions:
-Use tactical channel per assigned Division.

8. Communications							
Name	Ch	Function	Rx Freq	Rx Tone	Tx Freq	Tx Tone	Notes
ADMIN T1	1	COMMAND	171.4250N	0.0	163.1625N	110.9	BLACK MTN
ADMIN T2	2	COMMAND	171.4250N	0.0	163.1625N	123.0	SAGE MTN
ADMIN T5	3	COMMAND	171.4250N	0.0	163.1625N	146.2	KETTLE ROCK
ADMIN T7	4	COMMAND	171.4250N	0.0	163.1625N	167.9	DIXIE MTN
R5 PROJ	8	TACTICAL	168.6625N	0.0	168.6625N	0.0	
A/G CMD	14	A/G CMD	169.2875N	0.0	169.2875N	0.0	AIR-GROUND COMMAND
CALCORD	15	MEDICAL	156.0750N	156.7	156.0750N	156.7	AIR-GROUND MEDICAL
GUARD 22	16	AIRGUARD	168.6250N	0.0	168.6250N	110.9	EMERGENCY ONLY

Signature:
ICS 204
Date/Time: 7/21/2021 2200
Personnel Count: 78

ASSIGNMENT LIST (ICS 204 WF)

CONTROLLED UNCLASSIFIED
INFORMATION/BASIC

1. Incident Name: Beckwourth Complex	2. Operational Period: Date From: 07/22/21 Date To: 07/22/21 Time From: 0600 Time To: 1800	3. Branch Division VII N
4. Operations Personnel:		Page 1 of 1 November

Operations Section Chief: Alex McBath	Night Ops:
Branch Director: Kim Olson	Branch Safety: SOFR2 Thomas Nash
Division/Group Supervisor: Joe Reyes	Air Attack:

5. Resources Assigned:							
Resource Identifier	ALS	LWD	Leader	Personnel	Request #	Hours	Reporting Location
HC2 PVT R&R CONTRACTING 89	No	7/27	ISMAEL RANGEL	20	C-89	0600-1800	DIAMOND CAMP
ENG3 TNF 373	No	7/25	NADINE FRETWELL	5	E-309	0600-1800	DIAMOND CAMP
ENG3 PNF 13	No	7/25	CHRIS ENRIQUEZ	5	E-318	0600-1800	DIAMOND CAMP
ENG3 PVT OUTBACK FIREFIGHTIN	No	7/26	JARED ANDRA	3	E-385	0600-1800	DIAMOND CAMP
WTT1 PVT DUST CONTROL	No	7/26	JACK HAFER	2	E-274	0600-1800	DIAMOND CAMP
WTT2 PVT UTAH FIRE CO	No	7/26	ANTHONY GORDON	2	E-277	0600-1800	DIAMOND CAMP
WTT2 CARBONDALE	No	7/26	KARL OLIVER	2	E-284	0600-1800	DIAMOND CAMP
FMOD TURPIN	No	7/25	JEFF TURPIN	1	O-268	0600-1800	DIAMOND CAMP
STEN(T) SEETS	No	7/27	JAMES SEETS	1	O-408	0600-1800	DIAMOND CAMP
HEQB KNIPFEL	No	7/23	MIKE KNIPFEL	1	O-192	0600-1800	DIAMOND CAMP
HEQB (T) SCHMIDT	No	7/22	KYLE SCHMIDT	1	O-224	0600-1800	DIAMOND CAMP
EMPF KAY	Yes	7/26	NEVIN KAY	1	O-280	0600-1800	DIAMOND CAMP
EMPF FISCHER	Yes	7/26	SILAS FISCHER	1	O-371	0600-1800	DIAMOND CAMP
EMPF(T) ANDERSON	Yes	7/26	ROBERT ANDERSON	1	O-380	0600-1800	DIAMOND CAMP

6. Work Assignments:

- Mop up to the extent necessary to maintain containment.
- Provide structure defense and point protection as needed.

7. Special Instructions:

- Back haul trash and supplies.
- Answer calls for service.

8. Communications							
Name	Ch	Function	Rx Freq	Rx Tone	Tx Freq	Tx Tone	Notes
ADMIN T1	1	COMMAND	171.4250N	0.0	163.1625N	110.9	BLACK MTN
ADMIN T2	2	COMMAND	171.4250N	0.0	163.1625N	123.0	SAGE MTN
ADMIN T5	3	COMMAND	171.4250N	0.0	163.1625N	146.2	KETTLE ROCK
ADMIN T7	4	COMMAND	171.4250N	0.0	163.1625N	167.9	DIXIE MTN
R5 T5	7	TACTICAL	167.1125N	0.0	167.1125N	0.0	
A/G CMD	14	A/G CMD	169.2875N	0.0	169.2875N	0.0	AIR-GROUND COMMAND
CALCORD	15	MEDICAL	156.0750N	156.7	156.0750N	156.7	AIR-GROUND MEDICAL
GUARD 22	16	AIRGUARD	168.6250N	0.0	168.6250N	110.9	EMERGENCY ONLY

9. Prepared by: Name:	Logan Brown	RESL	Signature:
ICS 204	Date/Time: 7/21/2021 2200	Personnel Count: 46	

Intentionally Left Blank


ICS 205 - INCIDENT RADIO COMMUNICATIONS PLAN

1. Incident Name: Beckwourth Complex Incident Channels	2. Date/Time Prepared Date: 07/21/2021 Time: 1930
3. Operational Period: Date From: 07/22/21 Date To: 07/22/21 Time From: 0600 Time To: 1800	

4. Communications									
Ch#	Function	Name	Assigned To	Rx Freq	Rx Tone	Tx Freq	Tx Tone	Notes	
1	COMMAND	ADMIN T1	ALL DIVS	171.4250N	0.0	163.1625N	110.9	BLACK MTN	
2	COMMAND	ADMIN T2	ALL DIVS	171.4250N	0.0	163.1625N	123.0	SAGE MTN	
3	COMMAND	ADMIN T5	ALL DIVS	171.4250N	0.0	163.1625N	146.2	KETTLE ROCK	
4	COMMAND	ADMIN T7	ALL DIVS	171.4250N	0.0	163.1625N	167.9	DIXIE MTN	
5	TACTICAL	NIFC T2	DIV C, DIV R	168.2000N	0.0	168.2000N	0.0	INITIAL ATTACK	
6	TACTICAL	R5 T4	DIV I, DIV V	166.5500N	0.0	166.5500N	0.0		
7	TACTICAL	R5 T5	DIV N, DIV BLM	167.1125N	0.0	167.1125N	0.0		
8	TACTICAL	R5 PROJ	REPAIR GRP	168.6625N	0.0	168.6625N	0.0		
9									
10									
11									
12									
13	AIR TO GROUND	A/G 14	A/G	167.5000N	0.0	167.5000N	0.0	AIR-GROUND	
14	A/G CMD	A/G CMD	ALL DIVS	169.2875N	0.0	169.2875N	0.0	AIR-GROUND COMMAND	
15	MEDICAL	CALCORD	ALL DIVS	156.0750N	156.7	156.0750N	156.7	AIR-GROUND MEDICAL	
16	AIRGUARD	GUARD 22	ALL DIVS	168.6250N	0.0	168.6250N	110.9	EMERGENCY ONLY	

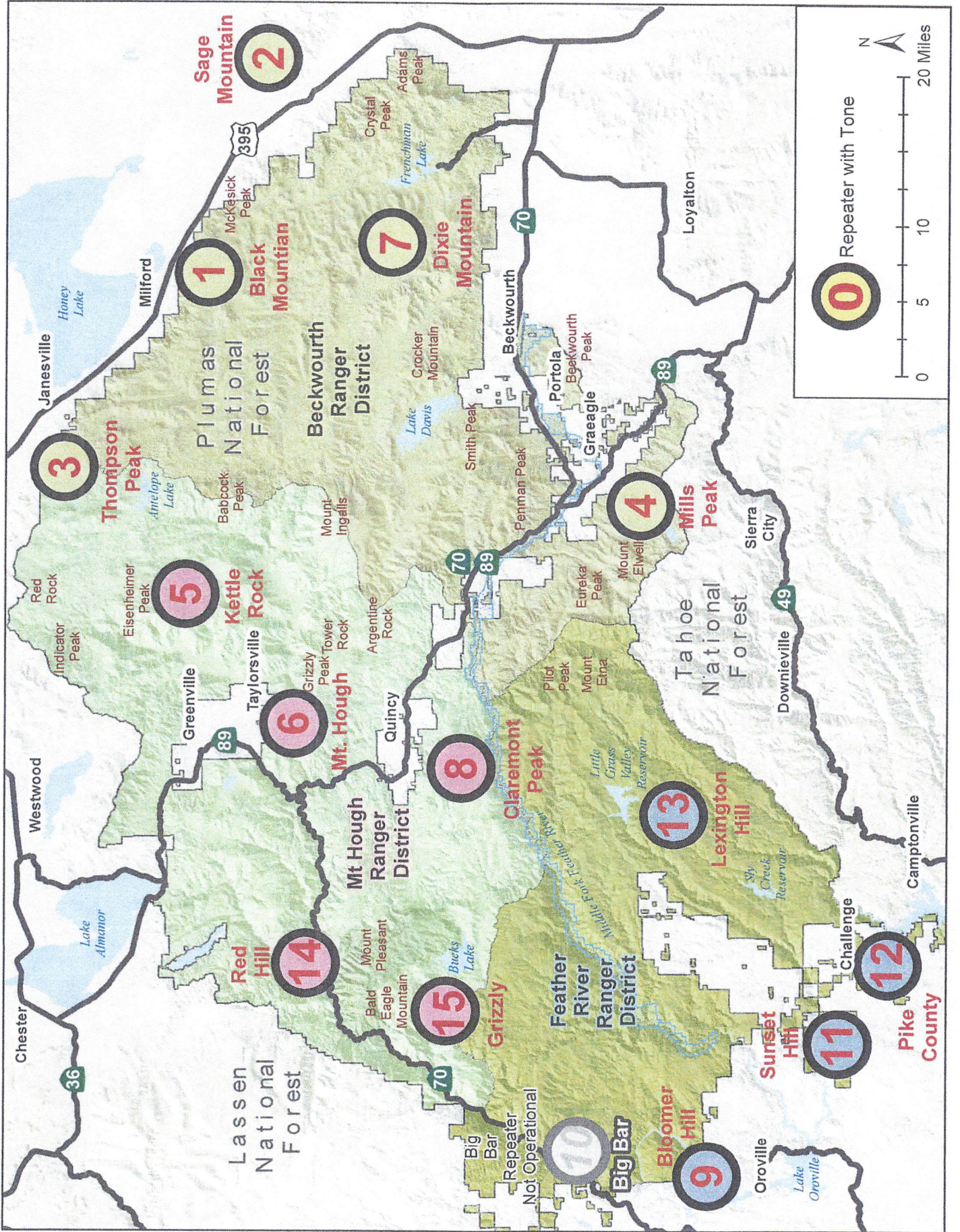
5. Special Instructions

6. Prepared by (Communications Unit Leader): Name: Kevin Throop

Signature: 


ICS 205 - CONTROLLED UNCLASSIFIED INFORMATION//BASIC

Date/Time: 07/21/21 1930



INCIDENT RISK ANALYSIS

ICS (215A) DAY SHIFT

BR/DV	HAZARDOUS ACTIONS – CONDITIONS	MITIGATIONS – WARNINGS – REMEDIES
ALL	HAZARD / DANGER TREES	<ul style="list-style-type: none"> Follow Hazard Tree Safety Guidelines (IRPG p.22.) Limit number of personnel around snags and their exposure time. Fallers must be qualified for the trees being felled. Be alert around hazard trees during wind events, even green trees. The hazard zone extends a minimum of 2½ tree lengths. Avoid parking vehicles or taking breaks under or near hazard trees.
ALL	TRAFFIC HAZARDS AND DRIVING	<ul style="list-style-type: none"> Roads closed because of the fire are beginning to reopen. Beware of increased residential and public traffic. Travelers on Highway 395 often exceed the posted speed limit. Take extra precaution when entering or exiting the Highway. During high fire activity, expect drivers to pull over or drive through the area slower. Practice "Defensive Driving" techniques. Maintain high visibility when in the operational area, use warning lights when working on roads or traveling in smoke. Best practice is to follow California DOT standard with high vis vest where appropriate Many roads are narrow and mid-slope, with soft shoulders. Allow heavy vehicles to pass on uphill side. Use spotters when backing or turning around. 5mph speed limit in and around ICP, keep your speed down in all areas. Drive at or below posted speed limits Use warning lights when working on roads or traveling in smoke. Use chock blocks, turn wheels into hill.
ALL	STEEP TERRAIN & ROLLING DEBRIS	<ul style="list-style-type: none"> Maintain 8'-10' spacing when working & walking. Do not work above any personnel. Evaluate necessity to send personnel in areas with limited access.
ALL	INDIRECT LINE CONSTRUCTION	<ul style="list-style-type: none"> Establish and maintain LCES. Utilize favorable locations when constructing control features; IE lighter fuels, natural or existing barriers and ridgelines
ALL	AIR OPERATIONS	<ul style="list-style-type: none"> Follow "Aviation Watch-Out Situations" on page 46, IRPG. Do not plan on air resources for tactical support or medical transportation. Refer to page 58, IRPG for directing bucket drops. Ensure positive communication with all air resources.
ALL	FIRE BEHAVIOR	<ul style="list-style-type: none"> Are you seeing what we have predicted? Conduct thorough assessments before starting work. Ensure LCES is in place. Plan & communicate your exit strategy with your crew and adjacent resources. Provide additional briefing for new resources and maintain communications.
ALL	NIGHT OPERATIONS	<ul style="list-style-type: none"> Have a purpose for where you drive and what you do. Don't rush into assignments. Use caution where you park or stage, especially in steep timbered areas. Use available time for briefings on roads, terrain, and potential rolling material, especially if the resources are new to the area. Increase SA by trying to see the work area during daylight hours. Use glow sticks to mark hazards, and ensure personnel have headlamps.
ALL	COMMUNICATIONS	<ul style="list-style-type: none"> Share your Situational Awareness (hazards, changes, etc.) to those who also have a need. Answer questions when asked by others. Ask for intel when you do not know the plan. Ensure all personnel are familiar with the incident and IA communications plans.
ALL	HEAT RELATED ILLNESS	<ul style="list-style-type: none"> Drink 2 to 1 water to sports drinks. Take frequent breaks, minimum of 10 minutes every hour. Recognize symptoms of HEAT RELATED ILLNESS which include low energy, cramping, headaches, dizziness, poor rest, poor eating habits, hot skin, and lack of sweating.
ALL	WILDLAND URBAN INTERFACE OPERATIONS	<ul style="list-style-type: none"> Maintain continuous Situational Awareness based upon the fire environment, observed fire behavior, hazards and incident objectives. Key to success in the WUI is preparation and preplanning. Be active and engage in defense preparations & do not wait for the fire to arrive. Be decisive in tactical engagement. Know when to engage or not. Establish management decision points, Safety Zones, TRA's, and Escape Routes.
<p>INCIDENT NAME:</p> <p>BECKWOURTH COMPLEX</p>		<p>OPERATIONAL PERIOD: 0600 – 1800</p> <p>JULY 22, 2021</p> <p>Date/Time Prepared: 07/21/2021 – 1300</p> 

July 18, 2021

Leaders,

We have had a significant uptick in COVID cases in Region 5 in the last week, specifically related to fire incidents. On Saturday alone, we had cases from 5 forests which directly affect our firefighting capacity. Safety is one of our core values, and right now our ability to keep our employees safe is being threatened by this virus, especially in light of the Delta variant.

We know the most effective tool for preventing the virus from spreading—while still meeting our firefighting mission—is to increase vaccination rates among our workforce. We have been vaccinating employees in camp, at our offices, and encouraging modules of employees to get vaccinated together. We are looking at additional ways to incentivize vaccinations. It is not progressing fast enough.

The second-best measure to limit spread is through social distancing and wearing masks. To date, only a few personnel have been wearing masks, there are more in-person meetings, and there is an increase in the use of indoor spaces compared to last year. Frankly, it has felt like many of our mitigations from last year have simply faded away.

Based on the rise in cases and number of people impacted, we need to take decisive action. Effective today, the following expectations need to be carried out by all leaders in Region 5:

1. **Masks are required for any employee working on a fire, regardless of vaccination status.**
 - a. **This includes firefighters, support personnel, BAER Teams, aviation assets, and dispatch centers. Everyone.**
 - b. **Anyone working directly or indirectly to support a fire must follow this guidance.**
 - c. **Exceptions remain for the following activities: eating/drinking, arduous duty, critical communication, and alone in a vehicle or enclosed room. Masks must be worn in interim periods where these exceptions do not apply (e.g., when not speaking during critical communications).**
2. **Camp protocols need to mitigate for COVID:**
 - a. **Briefings should be outdoors, if practical, and limited to as few personnel as possible.**
 - b. **Modules need to be kept apart, as much as possible (including during meals, one module per sleeper trailer, etc.).**
 - c. **Food service and other camp needs must have COVID mitigations, including masking.**
3. **Forests with fire incidents should consider mask requirements for anyone entering our facilities, given the intermixing with fire personnel. Needs vary by forest, but we encourage you to err on the side of caution in the protection of all employees.**

We do not have the luxury of halting all travel and completely eliminating the intermixing of employees from different units, therefore we must continue to utilize our world class employees to fight these fires wherever they occur. I wish these measures were not needed, but I feel waiting any longer to implement them would put the safety of our employees and the communities we serve at an unacceptable level of risk.

Thank you for your leadership on this important matter. Reach out if you have questions or concerns.

Randy Moore
Regional Forester
Forest Service
Pacific Southwest Region

COVID-19 Plan

To reduce the spread of COVID 19 within the Diamond Base Camp the following mitigations have been implemented:

- *Masks must be worn in all areas where 6 ft or more social distancing cannot be maintained, such as briefing time and when waiting in line for meals and showers.*
- *To reduce the number of potential exposures within the camp, when possible crews will send a few individuals to pick up meals for the entire crew.*
- *All fire personnel will use the following screening tool daily to assess for symptoms of COVID-19.*

Wildland Fire COVID-19 Screening Tool

Today or in the past 24 hours, have you had any of the following symptom*?

Symptom
Cough more than expected?
Shortness of breath or difficulty breathing?
Fever? Chills?
Muscle pain, outside your normal for firefighting?
Sore throat?
New loss of taste or smell?
Fatigue, outside your normal for firefighting?
Headache, outside your normal for firefighting?
Congestion or runny nose, outside your normal for firefighting?
Nausea or vomiting
Diarrhea
<i>* Take temperature with no-touch thermometer, if available *</i>

If you have answered "YES" to any of the questions above, see Frontline Medical Unit for evaluation and notify the Medical Unit as soon as possible.

Vaccinations

If you are interested in getting a vaccination while in camp contact one of the three COVID Advisor. For rapid testing during demob see Frontline Medical.

COVID Advisor Info: Francisco Rico (530) 913 6931; Allison Sanger (530) 218-7794; and Chris Low (530) 927-8029

FINANCE MESSAGE

Finance is now accepting electronic submission of
CTR's and Shift Tickets via email

Scan & Email your signed documents to:

2021.Beckwourth.finance@firenet.gov

****NOTE: YOUR DOCUMENTATION MUST BE
AN ATTACHMENT, AND NOT EMBEDDED IN
BODY OF THE EMAIL****

Install PDF Scanner app below by scanning QR with phone camera



Android

Set subject line
to TIME when
sending email

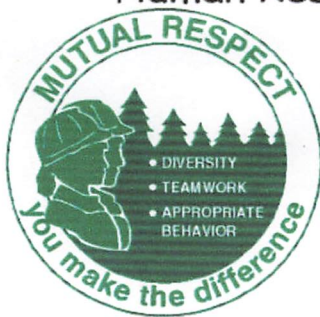


iPhone/iOS

Be sure to check in with Finance as close to
when you arrive as possible!

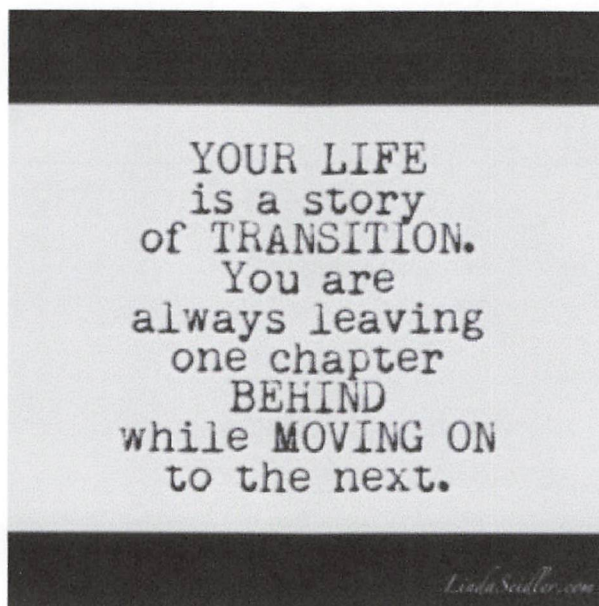
Stay safe out there

Human Resource Message



Transition

Transition is the process or a period of change from one state to another. This fire behavior and growth has transitioned across the landscape. As Team 5 transitions the Type 3 organization, there will be some fluid changes. Embrace the changes, ideas, and actions of others, as we all are looking towards the same goals. Please focus on the good work of those around you. Do your part to include everyone coming in by providing your knowledge and experience in this environment.



Andrea Cabida HRSP- 707-330-9939; andrea.cabida@usda.gov; Please call, text or email me anytime.

Overhead Sleeping

Overhead Parking

Crew Sleeping

PIO

Liaison

Check in Demob

Medical

IC

Plans

Finance

Safety/OPS

IT/COMS

Supply/Ordering

Meeting

COMMS

READ

LOGS

Facilities

Fire Daws

Laundry

Shower

Kitchen

Engine and Crew
Parking

Frontline
Medical

Security

Entrance

Ice Water Lunches

Supply

Briefing

Mobile Sleepers

Additional Parking

Training Specialist Message

An Incident Training Specialist is assigned to this incident and will be performing the duties “Remotely”.

To assure proper documentation for your assignment:

1. Scan the QR Code
2. Complete the Trainee Registration Form



This is the link to sign up.

At the end of your assignment:

1. Trainee: Complete the exit interview form. Use the exit interview QR code to access the document.



This is the link to the exit interview form.

2. **Trainer:** Fill in the Position Task Book as completely as possible for this incident.
3. **Trainer:** Complete the ICS 225 performance evaluation and discuss with your Trainee. Make sure it’s signed by both the Trainer and Trainee. Take a picture/ copy of the ICS 225 and send it to TNSPEP@gmail.com

The Training Specialist will send the training documents to the email address you provided.

For training related questions, call/text Emil Picchi (TNSP) at 650-520-5102 or email -TNSPEP@gmail.com

7/22/21

Demob List

CREWS

C-21	0600	(HC2I)	CRW2IA PATRIC C-21
C-41	0630	(HC2I)	CRW2IA FIRESTORM
C-89	0700	(HC2)	CRW2 R&R CONTRACTING

EQUIPMENT

E-6	0600	(ENG1)	ENG1 BECKWOURTH FD E-6
E-11	0615	(PU)	TRANSPORTATION - PICKUP
E-15	0630	(MEC)	SERVICE TRUCK MECH.T12
E-29	0645	(WTT2)	WTT2 SQF24
E-74	0700	(ENG3)	ENG3 SUNDANCE FIRE 303
E-212	0715	(ENG6)	ENG6 BLM 8641 E-212
E-286	0730	(WTS1)	WTS1 2541 E-286
E-376	0745	(ENG3)	ENG3 BRUSH 361 E-376

OVERHEAD

O-16	0600	(DIVS)	HEATHER GROVES
O-50	0615	(TFLD)	DAVID REYNOLDS
O-52	0630	(OPBD)	DAVID SOLDAVINI
O-71	0745	(TFLD)	BRADLEY DON WALKER
O-190	0800	(HEQB)	REESE SEWELL
O-362	0830	(SMOD)	SMOD GREAT LAKES
O-402	0845	(DIVS)	JASON HANSEN

Intentionally Left Blank

LINE ORDER FORM

ORDER #	DATE & TIME ORDERED Received from the Line	WHO PLACED ORDER DIVS, OPS, etc...	DELIVER to (DIV, Hallspt, DP, etc.) Division, Hell-Spot, Drop Point, etc.	MODE of DELIVERY Drive, Helo, pick-up

Order Received In Communications By:	TIME:
Communications Relayed/Placed the Order To:	TIME:
Order Shipped to the Line By (Name):	TIME:

ITEM#	DESCRIPTION	AMOUNT
1	1,000 Foot Hose Lay; Includes the following 10 lengths, 1 1/2" x 100' Hose. 10 lengths, 1" x 100' Hose. 10ea. 1 1/2" Gated Wyes. 10ea. 1 1/2" to 1" Reducers. 10ea. 1" Nozzles.	
2	2,000 Foot Hose Lay; Includes the following 20 lengths, 1 1/2" x 100' Hose. 20 lengths, 1" x 100' Hose. 20ea. 1 1/2" Gated Wyes. 20ea. 1 1/2" to 1" Reducers. 20ea. 1" Nozzles.	
3	3,000 Foot Hose Lay; Includes the following 30 lengths, 1 1/2" x 100' Hose. 30 lengths, 1" x 100' Hose. 30ea. 1 1/2" Gated Wyes. 30ea. 1 1/2" to 1" Reducers. 30ea. 1" Nozzles.	

ITEM#	REQUESTED ITEM	NFES#	AMOUNT	ITEM#	REQUESTED ITEM	NFES#	AMOUNT
4	Backpack Pump, 5 gallon	1149		26	Batteries, "AA", (package)	0030	
5	Foam, 5 gallon	1145		27	Gasoline, Unleaded (gallon)		
6	Hose, 3/4 inch, 50 ft. length	1016		28	Oil, 2 Cycle Mix (quart)	0341	
7	Hose, 1 inch, 100 ft. length	0966		29	Diesel, straight (gallon)		
8	Hose, 1 1/2 inch, 100 ft. length	0967		30	Oil, Bar & Chain (gallon)	1880	
9	Increaser, 3/4" to 1"	2235		31	Fusees (box)	0105	
10	Increaser, 1" to 1 1/2"	0416		32	Torch, Drip Torch ea.	0241	
11	Nozzle, Garden 3/4 inch	0136		33	Mix, Drip Torch 3-1, 5 gal.		
12	Nozzle, Forester, 1"	0024		34	Flagging, Ribbon, Color/Roll		
13	Nozzle, KK Type, 1"	1081		35	Washcloth, Waterless	0206	
14	Nozzle, KK Type, 1 1/2"	1082		36	Water, Cubi, 5 gallon ea.	0048	
15	Reducer, 1" to 3/4"	0733		37	Water, Bottled, (case)		
16	Reducer, 1 1/2" to 1"	0009		38	Sports Drink, Gatorade (case)		
17	Tee, Hoseline, 1"x1"x 3/4"	1809		39	Food, MRE's (12 per Box)	1842	
18	Tee, Hoseline, 1"x1"x 1"	2240		40	Pump Kit, High Pressure	0870	
19	Tee, Hoseline, 1 1/2" x 1 1/2" x 1"	0230		41	Pump, High Pressure	0148	
20	Wye, Gated, 3/4" inch	0904		42	Pump Kit, Light Weight	0670	
21	Wye, Gated, 1"	0259		43	Sprinkler Kit	1048	
22	Wye, Gated, 1 1/2"	0231		44	Pump Kit, Volume	6041	
23	Tank, Collapsible. Capacity Gallons?			45	Mop-Up Kit	0772	
24	Tank, Folding/Frame. Capacity ??						
25	Wrap, Structure (roll)	0881					

Date and Time Needed: _____ **Point of Contact at Delivery Location:** _____

OTHER / NOTES:

LINE ORDER FORM

ORDER #	DATE & TIME ORDERED Received from the Line	WHO PLACED ORDER DIVS, OPS, etc...	DELIVER to (DIV, Helispot, DP, etc.) Division, Hel-Spot, Drop Point, etc.	MODE of DELIVERY Drive, Helo, pick-up			
Order Received in Communications By:				TIME:			
Communications Relayed/Placed the Order To:				TIME:			
Order Shipped to the Line By (Name):				TIME:			
ITEM#	DESCRIPTION			AMOUNT			
1	1,000 Foot Hose Lay: includes the following 10 lengths, 1 1/2" x 100' Hose. 10 lengths, 1" x 100' Hose. 10ea. 1 1/2" Gated Wyes. 10ea. 1 1/2" to 1" Reducers. 10ea. 1" Nozzles.						
2	2,000 Foot Hose Lay: includes the following 20 lengths, 1 1/2" x 100' Hose. 20 lengths, 1" x 100' Hose. 20ea. 1 1/2" Gated Wyes. 20ea. 1 1/2" to 1" Reducers. 20ea. 1" Nozzles.						
3	3,000 Foot Hose Lay: includes the following 30 lengths, 1 1/2" x 100' Hose. 30 lengths, 1" x 100' Hose. 30ea. 1 1/2" Gated Wyes. 30ea. 1 1/2" to 1" Reducers. 30ea. 1" Nozzles.						
ITEM#	REQUESTED ITEM	NFESI	AMOUNT	ITEM#	REQUESTED ITEM	NFESI	AMOUNT
4	Backpack Pump, 5 gallon	1149		26	Batteries, "AA", (package)	0030	
5	Foam, 5 gallon	1145		27	Gasoline, Unleaded (gallon)		
6	Hose, 3/4 inch, 50 ft. length	1016		28	Oil, 2 Cycle Mix (quart)	0341	
7	Hose, 1 inch, 100 ft. length	0966		29	Diesel, straight (gallon)		
8	Hose, 1 1/2 inch, 100 ft. length	0967		30	Oil, Bar & Chain (gallon)	1880	
9	Increaser, 3/4" to 1"	2235		31	Fuses (box)	0105	
10	Increaser, 1" to 1 1/2"	0416		32	Torch, Drip Torch ea.	0241	
11	Nozzle, Garden 3/4 inch	0136		33	Mix, Drip Torch 3-1, 5 gal.		
12	Nozzle, Forester, 1"	0024		34	Flagging, Ribbon, Color/Roll		
13	Nozzle, KK Type, 1"	1081		35	Washcloth, Waterless	0206	
14	Nozzle, KK Type, 1 1/2"	1082		36	Water, Cubi, 5 gallon ea.	0048	
15	Reducer, 1" to 3/4"	0733		37	Water, Bottled, (case)		
16	Reducer, 1 1/2" to 1"	0009		38	Sports Drink, Gatorade (case)		
17	Tee, Hoseline, 1"x1"x 3/4"	1809		39	Food, MRE's (12 per Box)	1842	
18	Tee, Hoseline, 1"x1"x 1"	2240		40	Pump Kit, High Pressure	0870	
19	Tee, Hoseline, 1 1/2" x 1 1/2" x 1"	0230		41	Pump, High Pressure	0148	
20	Wye, Gated, 3/4" inch	0904		42	Pump Kit, Light Weight	0670	
21	Wye, Gated, 1"	0259		43	Sprinkler Kit	1048	
22	Wye, Gated, 1 1/2"	0231		44	Pump Kit, Volume	6041	
23	Tank, Collapsible. Capacity Gallons?			45	Mop-Up Kit	0772	
24	Tank, Folding/Frame. Capacity ??						
25	Wrap, Structure (roll)	0881					

Date and Time Needed: _____ **Point of Contact at Delivery Location:** _____

OTHER / NOTES:

MEDICAL PLAN	1. INCIDENT NAME: Beckwourth Complex	2. DATE PREPARED: July 21, 2021	3. TIME PREPARED: 1600	4. OPERATIONAL PERIOD 07/22/21 0600-1800
---------------------	---	------------------------------------	---------------------------	---

5. INCIDENT MEDICAL AID STATIONS			
MEDICAL AID STATIONS	LOCATION	ALS	
		YES	NO
Frontline Medical	Diamond Camp	XX	

6. TRANSPORTATION			
A. Ambulance Services			
NAME	LOCATION	PHONE	ALS
			YES
			NO
Mountain Medics 4X4 Ambulance 1	DP-35 Day	Command	XX
Mountain Medics 4X4 Ambulance 4	Branch IV / Doyle 24 hours	Command	XX

B. AIR AMBULANCE			
NAME	LOCATION	ALS	BLS
Care Flight 4	Beckwourth, 24 Hours	XX	
Care Flight 3	Truckee, 24 Hours	XX	
CHP H14 / H16 (Hoist)	Redding, Day only	XX	
Washoe County Sheriff (Hoist)	Reno, 24 Hours	XX	

7. HOSPITALS										
NAME	ADDRESS	TRAVEL TIME		PHONE	TRAUMA		HELIPAD		BURN CENTER	
		AIR	GRND		Yes	No	Yes	No	Yes	No
Eastern Plumas Health Care	500 1 st . Ave. Portola, Ca. 39°48.33'N, 120°27.77'W	5 Min	10 Min	(530) 832-6500		XX		XX		XX
Plumas District Hospital	1065 Bucks Lake Rd. Quincy, Ca 39°56.4115' N, 124°08.800' W	5 Min	40 Min	(530) 283-7110	L-4		XX			XX
Banner Lassen Medical Center	1800 Spring Ridge Dr. Susanville, Ca 40°24.45'N, 120°39.73'W	10 Min	90 Min	(530) 257-0911		XX	XX			XX
Renown Medical Center	1156 Mill St. Reno, Nv 39°31.52'N, 124°05.45'W	20 Min	50 Min	(775) 982-2005	L-2		XX			XX
St. Mary's Regional Medical Center	235 W. 6 th . St. Reno, Nv. 33°46.82'N, 118°11.17'W	20 Min	50 Min	(775) 770-3000 #4		XX	XX			XX
U.C. Davis Medical Center	2315 Stockton Blvd. Sacramento, Ca. 38°33.32'N, 121°27.35'W	45 Min	3 Hrs.	(916) 703-6576	L-1		XX		XX	

8. MEDICAL EMERGENCY PROCEDURES

"RED IWI" MEDICAL-EMERGENCY PLAN:

- Contact Communications on **Command** and declare you have a **RED IWI**
- Following the 8-Line on the back of the IAP or page 118 of the 2018 IRPG
- Tell them **Who** you are, **Where** you are at, **What** you have, and **What** you need.
- Update Communications once the patient has been transported.
- Close the loop with MEDL at the end of shift.

"Yellow or Green" NON-EMERGENCY MEDICAL PLAN:

- Contact Division / Communications and declare you have a **"Non-Emergency Medical."**
- Complete the 8-line if needed and turn it in to the medical unit at the end of the shift.

9. PREPARED BY
MEDL – Jeff Carlon *Jeff Carlon*

10. REVIEWED BY
SOF1- Dave Welch *Dave Welch*

Medical Incident Report

FOR A **NON-EMERGENCY INCIDENT**: WORK THROUGH CHAIN OF COMMAND TO REPORT AND TRANSPORT INJURED PERSONNEL AS NECESSARY.

FOR A **MEDICAL EMERGENCY**: IDENTIFY ON SCENE INCIDENT COMMANDER BY NAME AND POSITION AND ANNOUNCE **"MEDICAL EMERGENCY"** TO INITIATE RESPONSE FROM COMMUNICATIONS

Use the following items to communicate situation to communications/dispatch.

1. CONTACT COMMUNICATIONS / DISPATCH (Verify correct frequency prior to starting report)
Ex: "Communications, Div. Alpha. Stand-by for Emergency Traffic."

2. INCIDENT STATUS: *Provide incident summary (including number of patients) and command structure.*
Ex: "Communications, I have a Red priority patient, unconscious, struck by a falling tree.
Requesting air ambulance to Forest Road 1 at (Lat./Long.)
"This will be the Trout Meadow Medical Incident, IC is TFLD Jones. EMT Smith is providing medical care."

Severity of Emergency AND Transport Priority (priority 1, 2, 3)	<input type="checkbox"/> RED / PRIORITY 1 Life or limb threatening injury or illness. Evacuation need is IMMEDIATE <i>Ex: Unconscious, difficulty breathing, bleeding severely, 2° – 3° burns more than 4 palm sizes, heat stroke, disoriented.</i> <input type="checkbox"/> YELLOW / PRIORITY 2 Serious Injury or illness. Evacuation may be DELAYED if necessary. <i>Ex: Significant trauma, unable to walk, 2° – 3° burns not more than 1-3 palm sizes.</i> <input type="checkbox"/> GREEN / PRIORITY 3 Minor Injury or illness. Non-Emergency transport <i>Ex: Sprains, strains, minor heat-related illness.</i>	
Nature of Injury or Illness & Mechanism of Injury		<i>Brief Summary of Injury or Illness (Ex: Unconscious, Struck by Falling Tree)</i>
Transport Request		<i>Air Ambulance / Short Haul/Hoist Ground Ambulance / Other</i>
Patient Location		<i>Descriptive Location & Lat. / Long. (WGS84)</i>
Incident Name		<i>Geographic Name + "Medical" (Ex: Trout Meadow Medical)</i>
On-Scene Incident Commander		<i>Name of on-scene IC of Incident within an Incident (Ex: TFLD Jones)</i>
Crew Patient Care		<i>Name of Care Provider (Ex: EMT Smith)</i>

3. INITIAL PATIENT ASSESSMENT: *Complete this section for each patient as applicable (start with the most severe patient)*

Agency Affiliation: (NO PATIENT NAMES) Federal Contractor Local Government

Patient Assessment: Age: Weight: Chief Complaint:

(If pertinent to Injury) Skin Signs: (color/moisture/temp) Level of Consciousness: BP: HR: Respirations:

Treatment:

4. TRANSPORT PLAN:

Evacuation Location (*drop point, intersection, helispot, Lat. / Long, hazards*) Patient's ETA to Location:

5. ADDITIONAL RESOURCES / EQUIPMENT NEEDS:

Paramedic / EMT - Crews - Immobilization Devices - AED - Oxygen - Trauma Bag - IV/Fluid(s) - Splints - Rope rescue - Wheeled litter - HAZMAT - Extrication

6. COMMUNICATIONS: Identify State Air/Ground EMS Frequencies and Hospital Contacts as applicable

Function	Channel Name/Number	Receive (RX)	Tone/NAC *	Transmit (TX)	Tone/NAC *
COMMAND					
AIR-TO-GRND					

7. CONTINGENCY: Considerations: *If primary options fail, what actions can be implemented in conjunction with primary evacuation method? Be thinking ahead.*

8. ADDITIONAL INFORMATION: *Updates/Changes, etc.*

REMEMBER: Confirm ETA's of resources ordered. Act according to your level of training. Be Alert - Keep Calm - Think Clearly - Act Decisively

*** Follow up with MEDL upon return to ICP ***