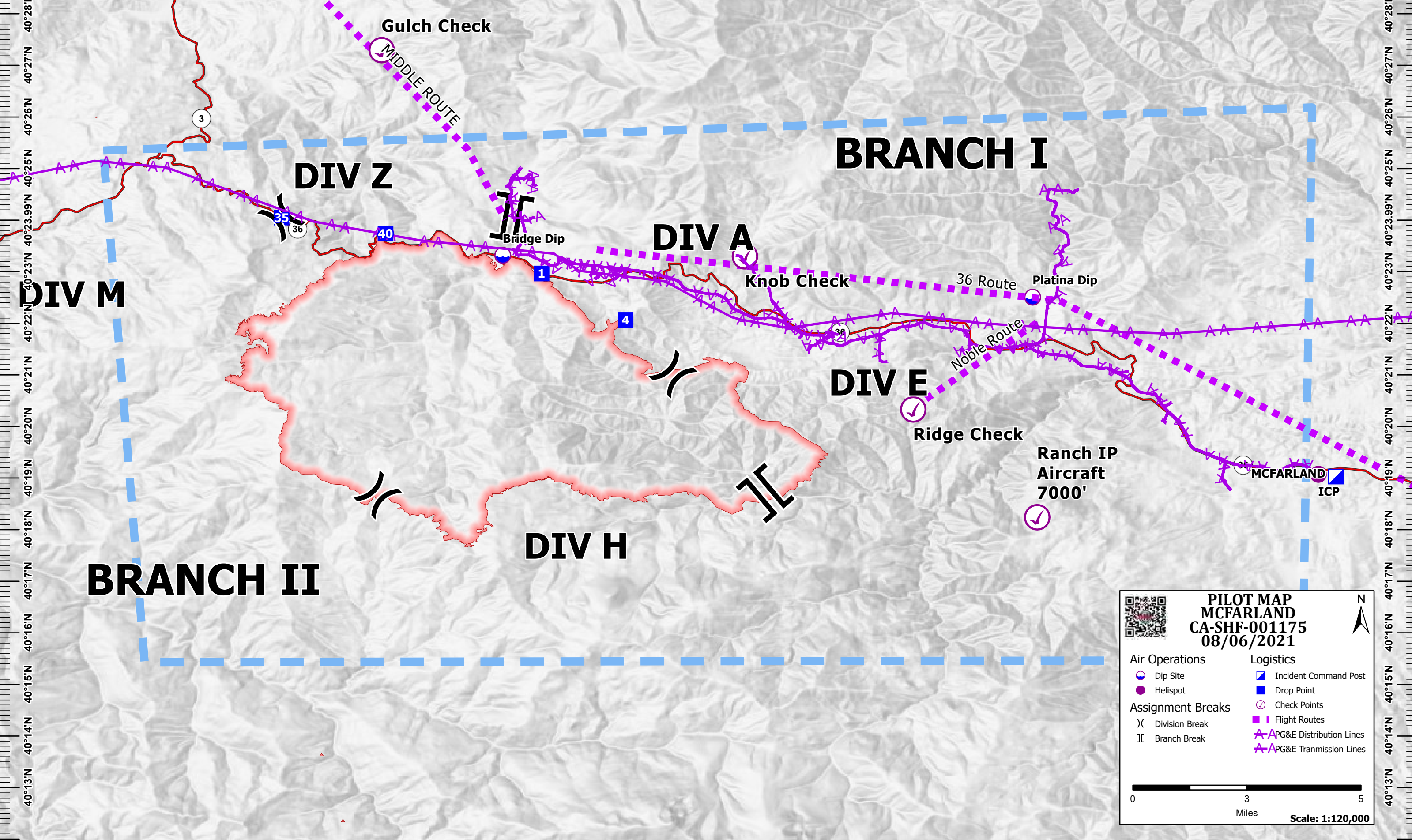


123°13'W 123°12'W 123°11'W 123°10'W 123°9'W 123°8'W 123°7'W 123°6.01'W 123°5'W 123°4'W 123°3'W 123°2'W 123°1'W 123°0'W 122°59'W 122°58'W 122°57'W 122°56'W 122°55'W 122°54'W 122°53'W 122°52'W 122°50'W 122°49'W 122°48'W 122°47'W

123°13'W 123°12'W 123°11'W 123°10'W 123°9'W 123°8'W 123°7'W 123°6.01'W 123°5'W 123°4'W 123°3'W 123°2'W 123°1'W 123°0'W 122°59'W 122°58'W 122°57'W 122°56'W 122°55'W 122°54'W 122°53'W 122°52'W 122°50'W 122°49'W 122°48'W 122°47'W



PILOT MAP
MCFARLAND
CA-SHF-001175
08/06/2021

Air Operations

- Dip Site (Blue circle with dot)
- Helispot (Purple circle)

Assignment Breaks

- Division Break (Curved line)
- Branch Break (Double line)

Logistics

- Incident Command Post (Blue square)
- Drop Point (Blue square)
- Check Points (Purple circle with checkmark)
- Flight Routes (Dashed purple line)
- PG&E Distribution Lines (Purple line with triangles)
- PG&E Transmission Lines (Purple line with triangles)

0 3 5
Miles
Scale: 1:120,000

Feature Category	Label	Lattitude	Longitude
Dip Site	Bridge Dip	40° 23.317' N	123° 03.791' W
Dip Site	Platina Dip	40° 22.506' N	122° 53.519' W
Drop Point	1	40° 22.965' N	123° 03.039' W
Drop Point	35	40° 24.050' N	123° 08.079' W
Drop Point	4	40° 22.065' N	123° 01.410' W
Drop Point	40	40° 23.742' N	123° 06.064' W
Helispot	ICP	40° 19.072' N	122° 47.980' W
Incident Command Post	MCFARLAND	40° 19.029' N	122° 47.641' W

Label	Lattitude	Longitude
Knob Check	40° 23.298' N	122° 59.097' W
Ridge Check	40° 20.330' N	122° 55.833' W
Ranch IP Aircraft 7000'	40° 18.240' N	122° 53.430' W
Gulch Check	40° 27.295' N	123° 06.137' W