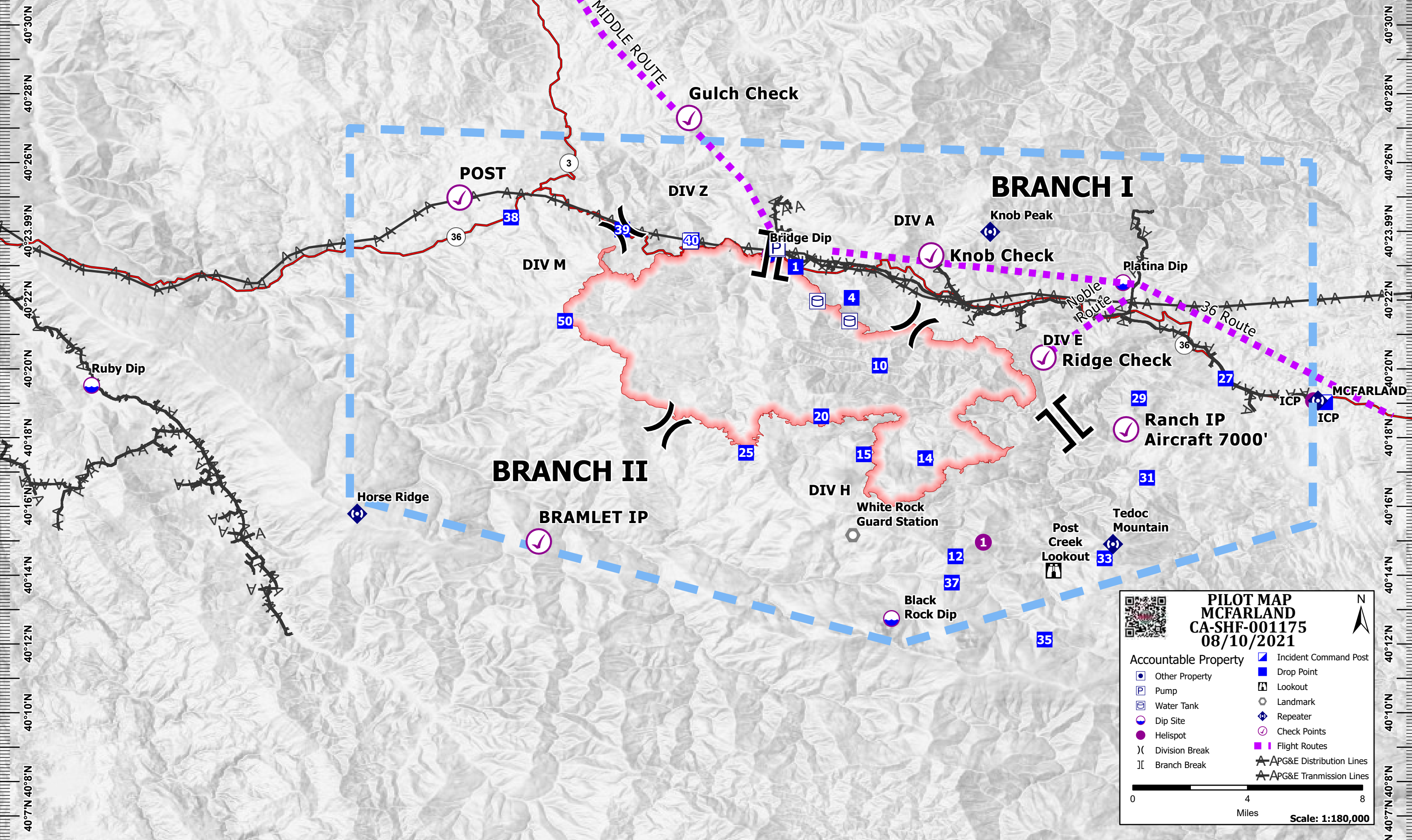


123°25'W 123°23'W 123°21.01'W 123°19'W 123°17'W 123°15'W 123°13'W 123°11'W 123°9'W 123°7'W 123°5'W 123°3'W 123°1'W 122°59'W 122°57'W 122°55'W 122°53'W 122°51.01'W 122°49'W 122°47'W



123°25'W 123°23'W 123°21.01'W 123°19'W 123°17'W 123°15'W 123°13'W 123°11'W 123°9'W 123°7'W 123°5'W 123°3'W 123°1'W 122°59'W 122°57'W 122°55'W 122°53'W 122°51.01'W 122°49'W 122°47'W

**PILOT MAP**  
**MCFARLAND**  
**CA-SHF-001175**  
**08/10/2021**

Accountable Property

- Other Property
- Pump
- Water Tank
- Dip Site
- Helispot
- Division Break
- Branch Break
- Incident Command Post
- Drop Point
- Lookout
- Landmark
- Repeater
- Check Points
- Flight Routes
- APG&E Distribution Lines
- APG&E Transmission Lines

0 4 8  
Miles  
Scale: 1:180,000

Feature Category	Label	Lattitude	Longitude
Dip Site	Black Rock Dip	40° 12.740' N	123° 00.250' W
Dip Site	Bridge Dip	40° 23.317' N	123° 03.791' W
Dip Site	Platina Dip	40° 22.506' N	122° 53.519' W
Dip Site	Ruby Dip	40° 19.520' N	123° 23.511' W
Drop Point	1	40° 22.965' N	123° 03.039' W
Drop Point	10	40° 20.095' N	123° 00.593' W
Drop Point	12	40° 14.548' N	122° 58.393' W
Drop Point	14	40° 17.403' N	122° 59.271' W
Drop Point	15	40° 17.515' N	123° 01.057' W
Drop Point	20	40° 18.620' N	123° 02.294' W
Drop Point	25	40° 17.559' N	123° 04.481' W
Drop Point	27	40° 19.719' N	122° 50.536' W
Drop Point	29	40° 19.142' N	122° 53.056' W
Drop Point	31	40° 16.832' N	122° 52.820' W
Drop Point	33	40° 14.491' N	122° 54.054' W
Drop Point	35	40° 12.130' N	122° 55.800' W
Drop Point	37	40° 13.785' N	122° 58.497' W
Drop Point	38	40° 24.401' N	123° 11.316' W
Drop Point	39	40° 24.050' N	123° 08.079' W
Drop Point	4	40° 22.065' N	123° 01.410' W
Drop Point	40	40° 23.742' N	123° 06.064' W
Drop Point	50	40° 21.396' N	123° 09.745' W
Helispot	1	40° 14.958' N	122° 57.581' W
Helispot	ICP	40° 19.072' N	122° 47.980' W
Incident Command Post	MCFARLAND	40° 19.029' N	122° 47.641' W
Label	Lattitude	Longitude	
Knob Check	40° 23.298' N	122° 59.097' W	
Ridge Check	40° 20.330' N	122° 55.833' W	
Ranch IP Aircraft 7000'	40° 18.240' N	122° 53.430' W	
Gulch Check	40° 27.295' N	123° 06.137' W	
BRAMLET IP	40° 14.982' N	123° 10.508' W	
POST	40° 24.980' N	123° 12.811' W	