

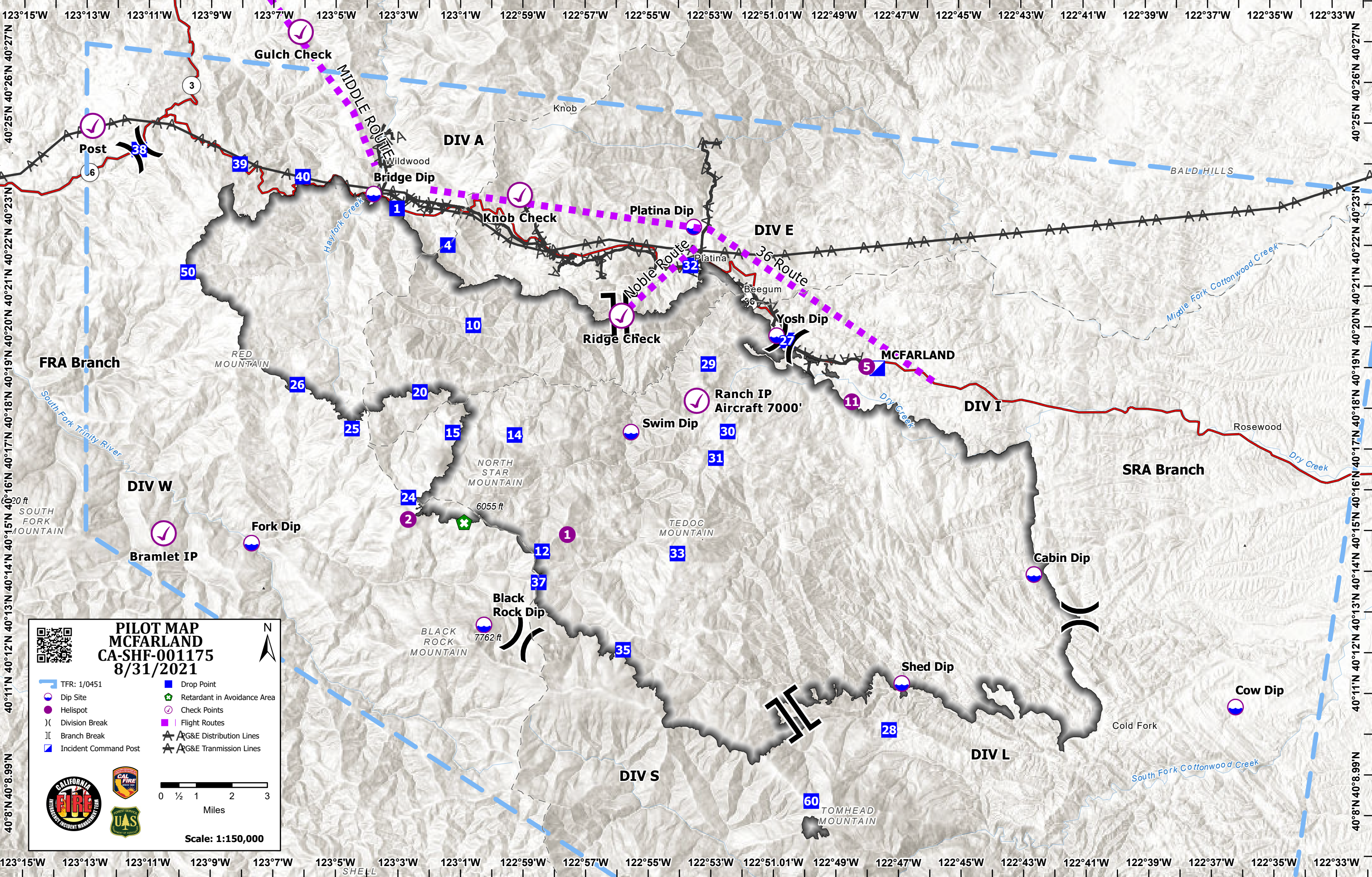
**PILOT MAP**  
**MCFARLAND**  
**CA-SHF-001175**  
**8/31/2021**

QR Code

TFR: 1/0451	Drop Point
Dip Site	Retardant in Avoidance Area
Helispot	Check Points
Division Break	Flight Routes
Branch Break	G&E Distribution Lines
Incident Command Post	G&E Transmission Lines

Scale: 1:150,000

0 1/2 1 2 3 Miles



<b>Feature Category</b>	<b>Label</b>	<b>Latitude</b>	<b>Longitude</b>	<b>Label</b>	<b>Latitude</b>	<b>Longitude</b>
Dip Site	Black Rock Dip	40° 12.740' N	123° 00.250' W	Knob Check	40° 23.298' N	122° 59.097' W
Dip Site	Bridge Dip	40° 23.317' N	123° 03.791' W	Ridge Check	40° 20.330' N	122° 55.833' W
Dip Site	Cabin Dip	40° 13.957' N	122° 42.640' W	Ranch IP Aircraft 7000'	40° 18.240' N	122° 53.430' W
Dip Site	Cow Dip	40° 10.684' N	122° 36.205' W	Gulch Check	40° 27.295' N	123° 06.137' W
Dip Site	Fork Dip	40° 14.744' N	123° 07.694' W	Bramlet IP	40° 14.982' N	123° 10.508' W
Dip Site	Platina Dip	40° 22.506' N	122° 53.519' W	Post	40° 24.980' N	123° 12.811' W
Dip Site	Shed Dip	40° 11.291' N	122° 46.881' W			
Dip Site	Swim Dip	40° 17.473' N	122° 55.537' W			
Dip Site	Yosh Dip	40° 19.835' N	122° 50.865' W			
Drop Point	1	40° 22.965' N	123° 03.039' W			
Drop Point	10	40° 20.095' N	123° 00.593' W			
Drop Point	12	40° 14.548' N	122° 58.393' W			
Drop Point	14	40° 17.403' N	122° 59.271' W			
Drop Point	15	40° 17.464' N	123° 01.252' W			
Drop Point	20	40° 18.460' N	123° 02.304' W			
Drop Point	24	40° 15.868' N	123° 02.670' W			
Drop Point	25	40° 17.559' N	123° 04.481' W			
Drop Point	26	40° 18.637' N	123° 06.233' W			
Drop Point	27	40° 19.719' N	122° 50.536' W			
Drop Point	28	40° 10.153' N	122° 47.292' W			
Drop Point	29	40° 19.142' N	122° 53.056' W			
Drop Point	30	40° 17.485' N	122° 52.438' W			
Drop Point	31	40° 16.832' N	122° 52.820' W			
Drop Point	32	40° 21.562' N	122° 53.630' W			
Drop Point	33	40° 14.491' N	122° 54.054' W			
Drop Point	35	40° 12.130' N	122° 55.800' W			
Drop Point	37	40° 13.785' N	122° 58.497' W			
Drop Point	38	40° 24.401' N	123° 11.316' W			
Drop Point	39	40° 24.050' N	123° 08.079' W			
Drop Point	4	40° 22.065' N	123° 01.410' W			
Drop Point	40	40° 23.742' N	123° 06.064' W			
Drop Point	50	40° 21.396' N	123° 09.745' W			
Drop Point	60	40° 08.410' N	122° 49.784' W			
Helispot	1	40° 14.958' N	122° 57.581' W			
Helispot	11	40° 18.210' N	122° 48.460' W			
Helispot	2	40° 15.330' N	123° 02.678' W			
Helispot	5	40° 19.072' N	122° 47.980' W			
Incident Command Post	MCFARLAND	40° 19.029' N	122° 47.641' W			