

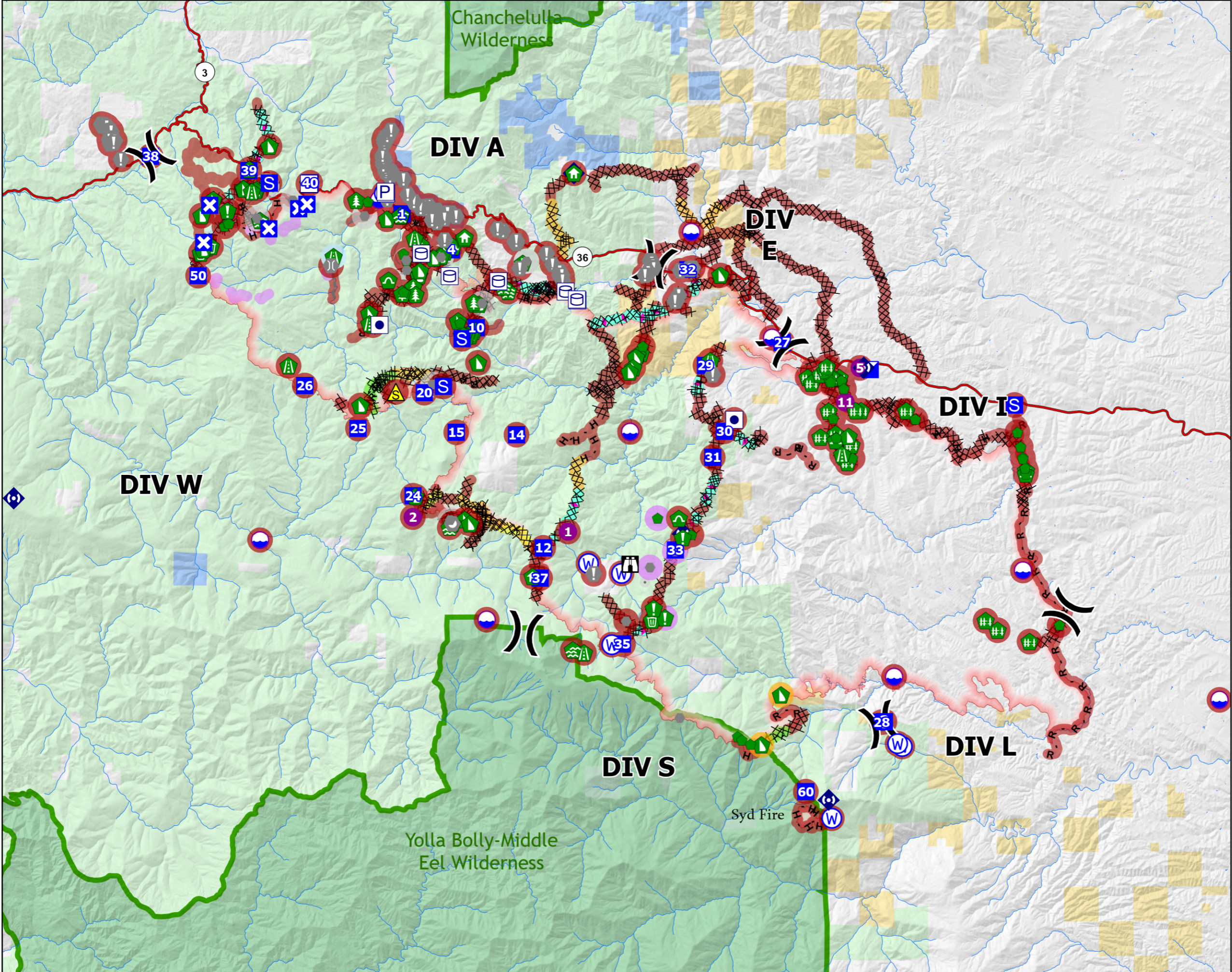
Final Repair Map

McFarland Fire

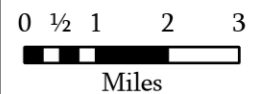
CA-SHF-001175

August 28, 2021

122,350 Acres



- Dip Site
- Helispot
- Division Break
- Incident Command Post
- Drop Point
- Closure
- Staging Area
- Lookout
- Value at Risk
- Other
- Landmark
- Bridge
- Water Development or Draft Site
- Structure Wrap
- Stream Crossing
- Road Repair
- Resource Location
- Repair Point
- Hazard Tree
- Fence - Cut/Damaged
- Dozer Push
- Culvert
- Clean Up Area
- Repeater
- Safety Zone
- Water Source
- Completed Dozer Line
- Completed Hand Line
- Completed Mixed Construction Line
- Completed Road as Line
- Other
- Repair Line
- Tactical Ridgetop Repair Needed
- USFS Wilderness
- Ownership
 - Bureau of Indian Affairs
 - Bureau of Land Management
 - Private
 - Sierra Pacific Industries
 - USDA Forest Service
- Repair Status
 - Completed - Inspected
 - Completed - Ready for Inspection
 - In Progress
 - Repair Needed
 - No Repair Needed
 - Other - See Comments



1:60,000
NAD 1983 UTM 10N

