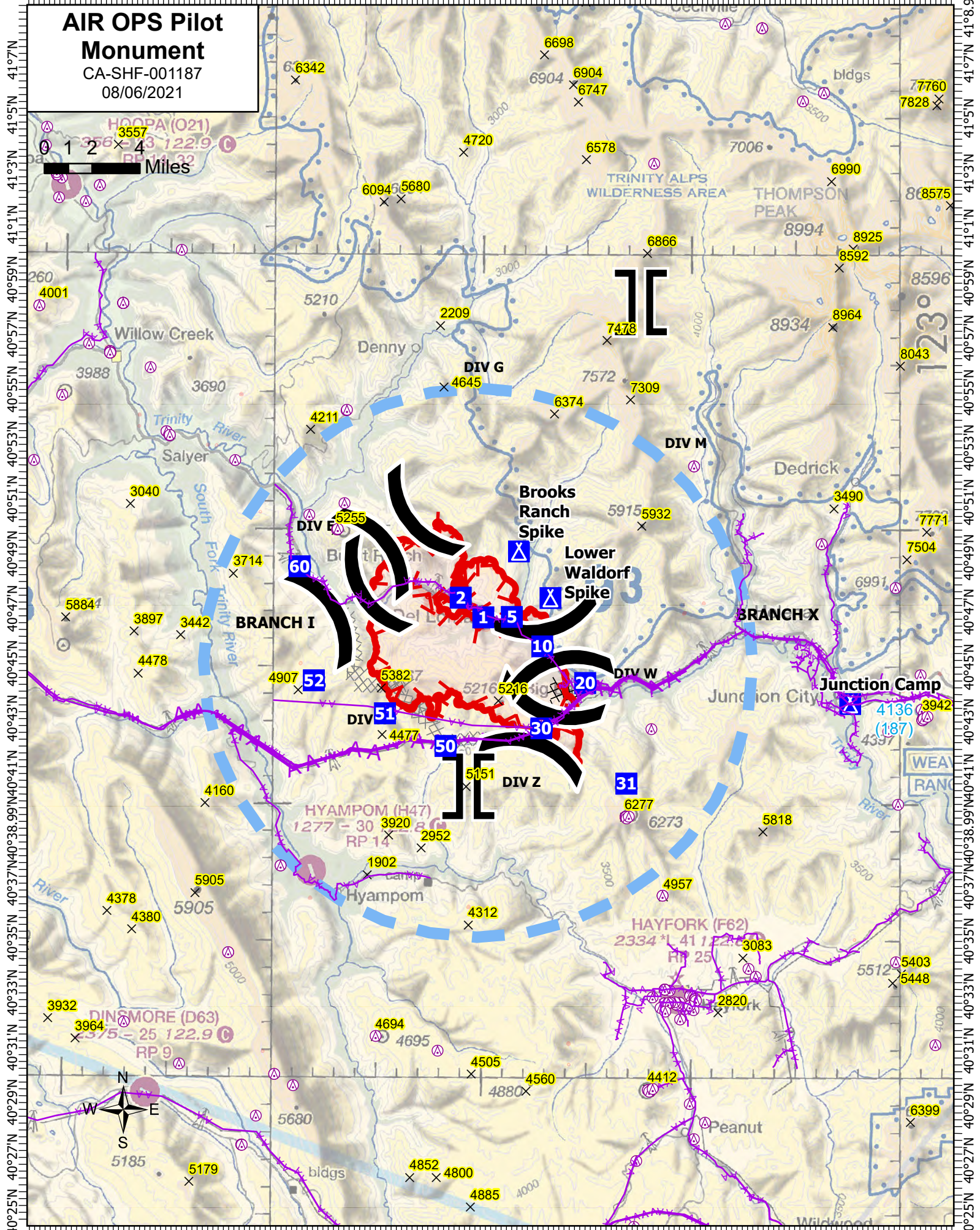
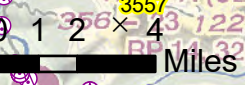


123°42'W 123°39'W 123°36'W 123°33'W 123°30'W 123°27'W 123°24'W 123°21'W 123°18'W 123°15'W 123°12'W 123°9'W 123°6.01'W 123°3'W 123°0'



AIR OPS Pilot Monument

CA-SHF-001187
08/06/2021


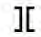


41°07'N 41°05'N 41°03'N 41°01'N 40°59'N 40°57'N 40°55'N 40°53'N 40°51'N 40°49'N 40°47'N 40°45'N 40°43'N 40°41'N 40°39'N 40°37'N 40°35'N 40°33'N 40°31'N 40°29'N 40°27'N 40°25'N

123°0' 123°3' 123°6.01' 123°9' 123°12' 123°15' 123°18' 123°21' 123°24' 123°27' 123°30' 123°33' 123°36' 123°39' 123°42'W


123°41.5'W 123°38'W 123°35'W 123°32'W 123°29'W 123°26'W 123°23'W 123°20'W 123°17'W 123°14'W 123°11'W 123°8'W 123°5'W 122°59'W

Assignment Breaks

-  Division Break
-  Branch Break

Logistics


-  Drop Point
-  Camp

 Aerial Hazard

Ops Completed

 Completed Dozer Line

Ops Planned

 Planned Dozer Line

Air Ops

 Aerial Hazard

 Temporary Flight Restriction

Fire Perimeter

 Fire Edge

 Wildfire Daily Fire Perimeter

FC Point Type	Label	Latitude WGS84 DDM	Longitude WGS84 DDM
Drop Point	1	40° 46.78913568' N	123° 19.96032828' W
Drop Point	10	40° 45.74030622' N	123° 17.12882412' W
Drop Point	2	40° 47.50230600' N	123° 21.05082498' W
Drop Point	20	40° 44.40730626' N	123° 15.06882366' W
Drop Point	30	40° 42.75030600' N	123° 17.16082368' W
Drop Point	31	40° 40.74530616' N	123° 13.07782278' W
Drop Point	5	40° 46.80830616' N	123° 18.59082450' W
Drop Point	50	40° 42.09330552' N	123° 21.74882424' W
Drop Point	51	40° 43.27830540' N	123° 24.65282490' W
Drop Point	52	40° 44.46330516' N	123° 28.07082558' W
Drop Point	60	40° 48.61730538' N	123° 28.79082630' W