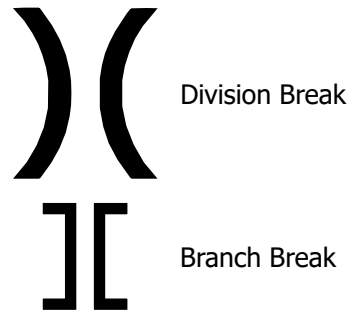


# AIR OPS Pilot

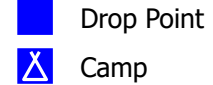
Monument  
CA-SHF-001187

08/08/2021

### Assignment Breaks



### Logistics



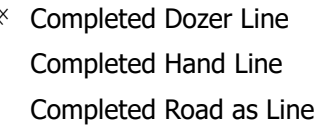
### Repair



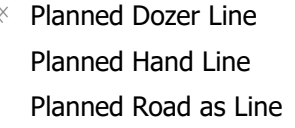
### Water



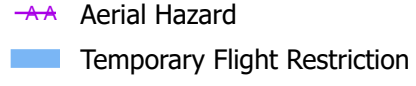
### Ops Completed



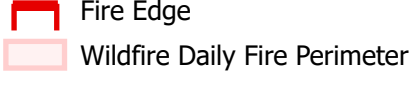
### Ops Planned



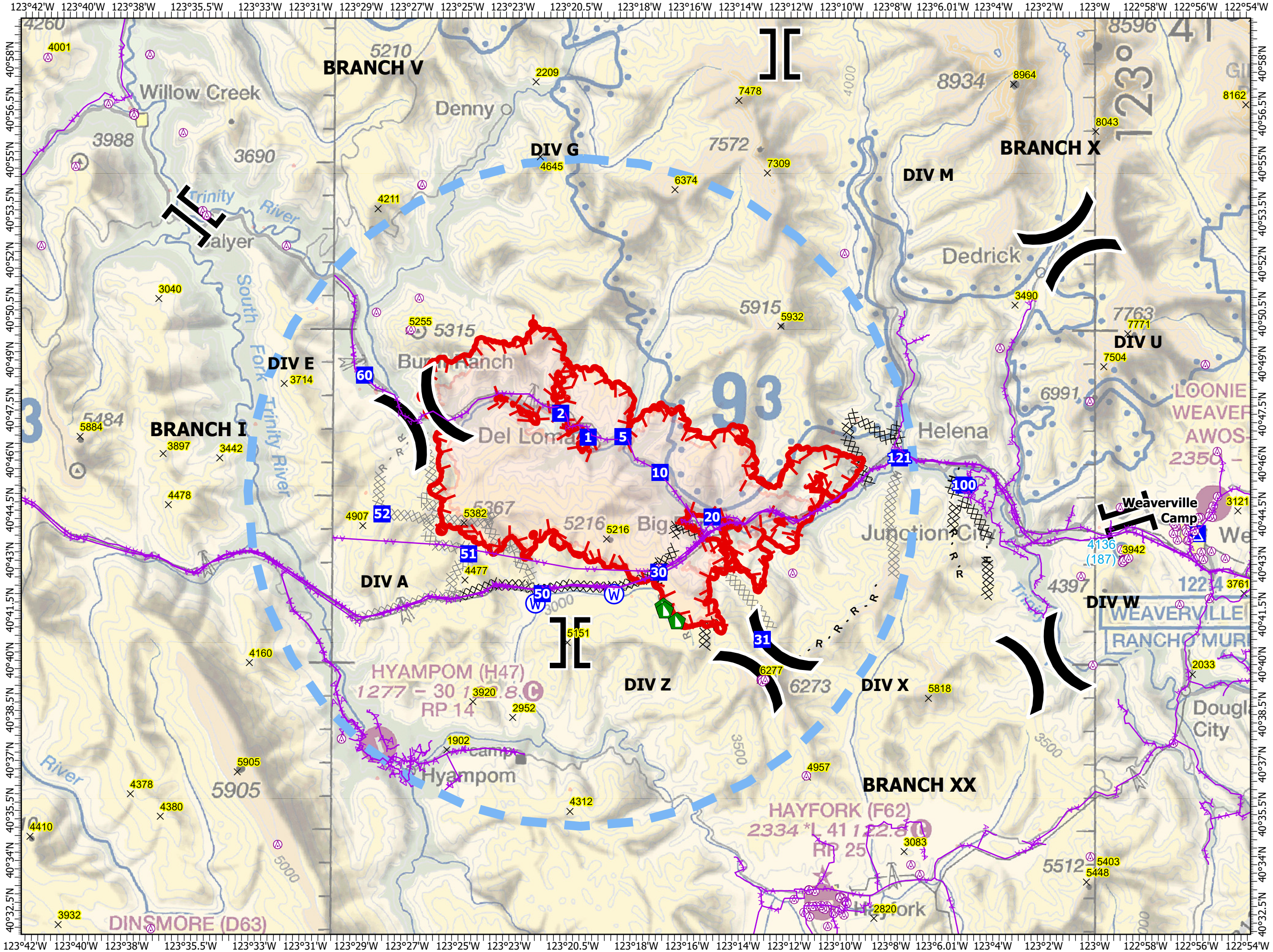
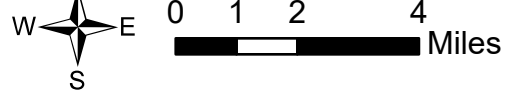
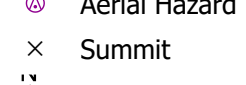
### Air Ops



### Fire Perimeter



### Air Ops Points



| <b>FC Point Type</b> | <b>Label</b> | <b>Latitude WGS84<br/>DDM</b> | <b>Longitude WGS84<br/>DDM</b> |
|----------------------|--------------|-------------------------------|--------------------------------|
| Drop Point           | 1            | 40° 46.78913570' N            | 123° 19.96032831' W            |
| Drop Point           | 10           | 40° 45.74030620' N            | 123° 17.12882412' W            |
| Drop Point           | 100          | 40° 45.38030718' N            | 123° 05.14782234' W            |
| Drop Point           | 121          | 40° 46.19369670' N            | 123° 07.68776892' W            |
| Drop Point           | 2            | 40° 47.50230598' N            | 123° 21.05082500' W            |
| Drop Point           | 20           | 40° 44.40730626' N            | 123° 15.06882365' W            |
| Drop Point           | 30           | 40° 42.75030598' N            | 123° 17.16082369' W            |
| Drop Point           | 31           | 40° 40.74530615' N            | 123° 13.07782281' W            |
| Drop Point           | 5            | 40° 46.80830616' N            | 123° 18.59082449' W            |
| Drop Point           | 50           | 40° 42.09330554' N            | 123° 21.74882425' W            |
| Drop Point           | 51           | 40° 43.27830540' N            | 123° 24.65282492' W            |
| Drop Point           | 52           | 40° 44.46330514' N            | 123° 28.07082555' W            |
| Drop Point           | 60           | 40° 48.61730540' N            | 123° 28.79082627' W            |