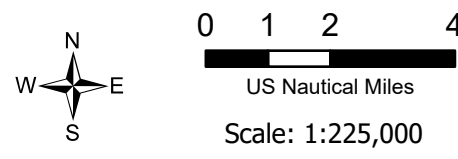
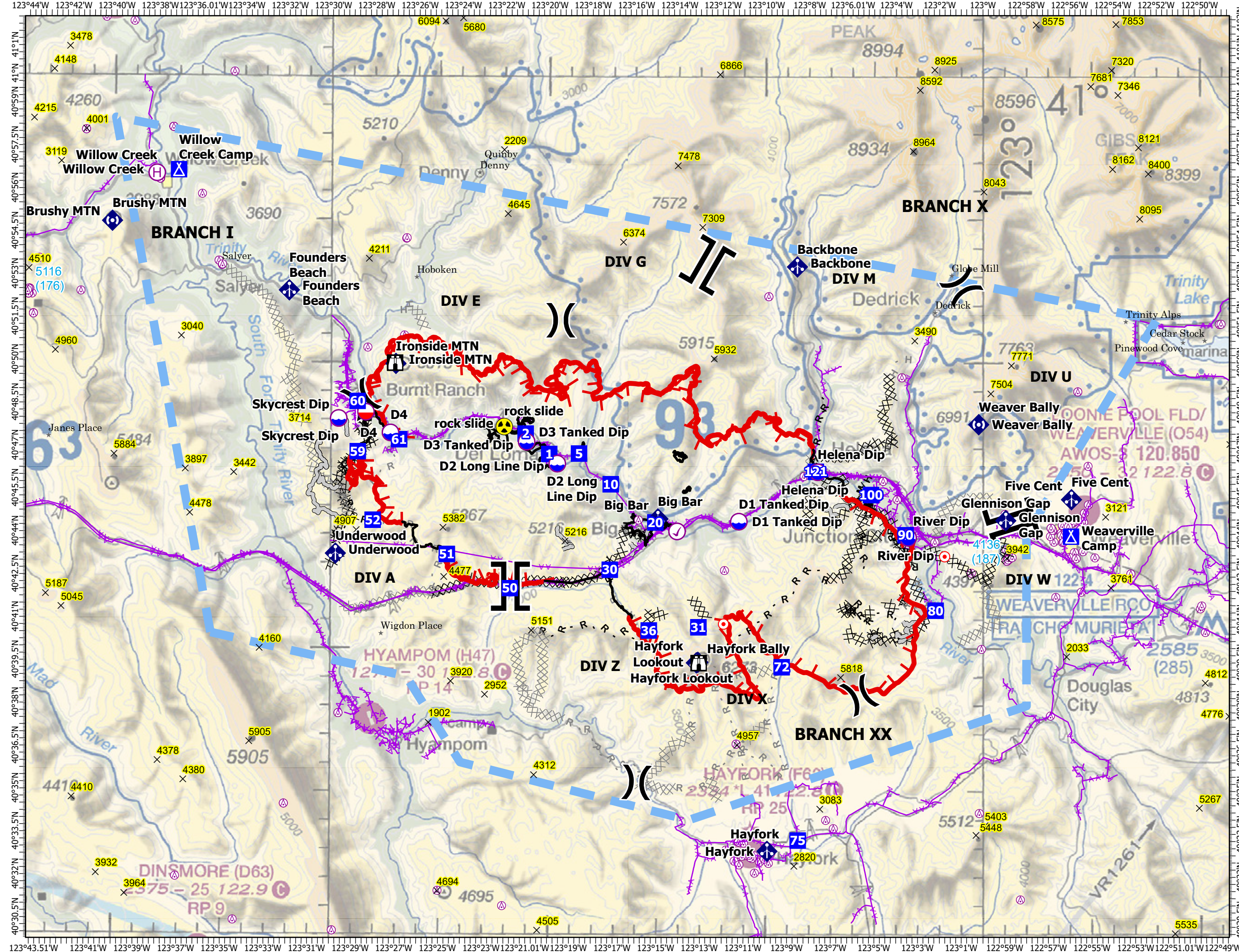


AIR OPS Pilot

MONUMENT
CA-SHF-001187
08/17/2021

- Summit
- Air Operations**
 - Aerial Hazard
 - Check Point
 - Dip Site
 - Mobile Retardant Base
 - Helibase
- Assignment Breaks**
 - Division Break
 - Branch Break
- Logistics**
 - Drop Point
 - Camp
- Operations**
 - Lookout
- Fire**
 - Hot Spot - Spot Fire
- Communications**
 - Mobile Weather Unit
 - Repeater
- Safety**
 - Hazard
- Ops Completed**
 - Completed Dozer Line
 - Completed Hand Line
 - Completed Mixed Construction Line
 - Completed Road as Line
- Ops Planned**
 - Planned Dozer Line
 - Planned Hand Line
 - Planned Road as Line
- Reference**
 - Access or Improved Road
- Air Ops**
 - Aerial Hazard
 - Temporary Flight Restriction
- Fire Perimeter**
 - Fire Edge
 - Contained Line



FC Point Type	Label	Latitude WGS84 DDM	Longitude WGS84 DDM
Check Point		40° 44.096' N	123° 14.070' W
Dip Site	D1 Tanked Dip	40° 44.442' N	123° 11.230' W
Dip Site	D2 Long Line Dip	40° 46.454' N	123° 19.590' W
Dip Site	D3 Tanked Dip	40° 47.217' N	123° 21.004' W
Dip Site	D4	40° 47.520' N	123° 27.271' W
Dip Site	Helena Dip	40° 46.175' N	123° 07.605' W
Dip Site	River Dip	40° 43.884' N	123° 03.443' W
Dip Site	Skycrest Dip	40° 48.017' N	123° 29.659' W
Drop Point	1	40° 46.789' N	123° 19.960' W
Drop Point	10	40° 45.740' N	123° 17.129' W
Drop Point	100	40° 45.380' N	123° 05.148' W
Drop Point	121	40° 46.194' N	123° 07.688' W
Drop Point	2	40° 47.502' N	123° 21.051' W
Drop Point	20	40° 44.407' N	123° 15.069' W
Drop Point	30	40° 42.750' N	123° 17.161' W
Drop Point	31	40° 40.745' N	123° 13.078' W
Drop Point	36	40° 40.628' N	123° 15.359' W
Drop Point	5	40° 46.808' N	123° 18.591' W
Drop Point	50	40° 42.093' N	123° 21.749' W
Drop Point	51	40° 43.278' N	123° 24.653' W
Drop Point	52	40° 44.463' N	123° 28.071' W
Drop Point	59	40° 46.857' N	123° 28.776' W
Drop Point	60	40° 48.617' N	123° 28.791' W
Drop Point	61	40° 47.286' N	123° 26.876' W
Drop Point	72	40° 39.354' N	123° 09.250' W
Drop Point	75	40° 33.291' N	123° 08.499' W
Drop Point	80	40° 41.337' N	123° 02.176' W
Drop Point	90	40° 43.977' N	123° 03.556' W
Hazard	rock slide	40° 47.746' N	123° 22.032' W
Helibase	Willow Creek	40° 56.571' N	123° 38.095' W
Hot Spot - Spot Fire		40° 40.857' N	123° 11.925' W
Hot Spot - Spot Fire		40° 43.225' N	123° 01.763' W
Lookout	Hayfork Lookout	40° 39.492' N	123° 13.062' W
Lookout	Ironside Lookout	40° 49.961' N	123° 27.075' W
Mobile Retardant		40° 48.240' N	123° 28.407' W
Mobile Weather Unit	Backbone	40° 53.357' N	123° 08.552' W
Mobile Weather Unit	Big Bar	40° 44.530' N	123° 14.952' W
Mobile Weather Unit	Five Cent	40° 45.219' N	122° 55.929' W
Mobile Weather Unit	Founders Beach	40° 52.489' N	123° 31.966' W
Mobile Weather Unit	Glennison Gap	40° 44.484' N	122° 58.951' W
Mobile Weather Unit	Hayfork	40° 32.911' N	123° 09.909' W
Mobile Weather Unit	Hayfork Lookout	40° 39.500' N	123° 13.167' W
Mobile Weather Unit	Underwood	40° 43.290' N	123° 29.778' W
Repeater	Brushy MTN	40° 54.882' N	123° 40.139' W
Repeater	Bully Choop	40° 33.186' N	122° 46.063' W
Repeater	Hayfork Bally	40° 39.521' N	123° 13.100' W
Repeater	Ironside MTN	40° 49.935' N	123° 27.037' W
Repeater	Weaver Bally	40° 47.844' N	123° 00.196' W