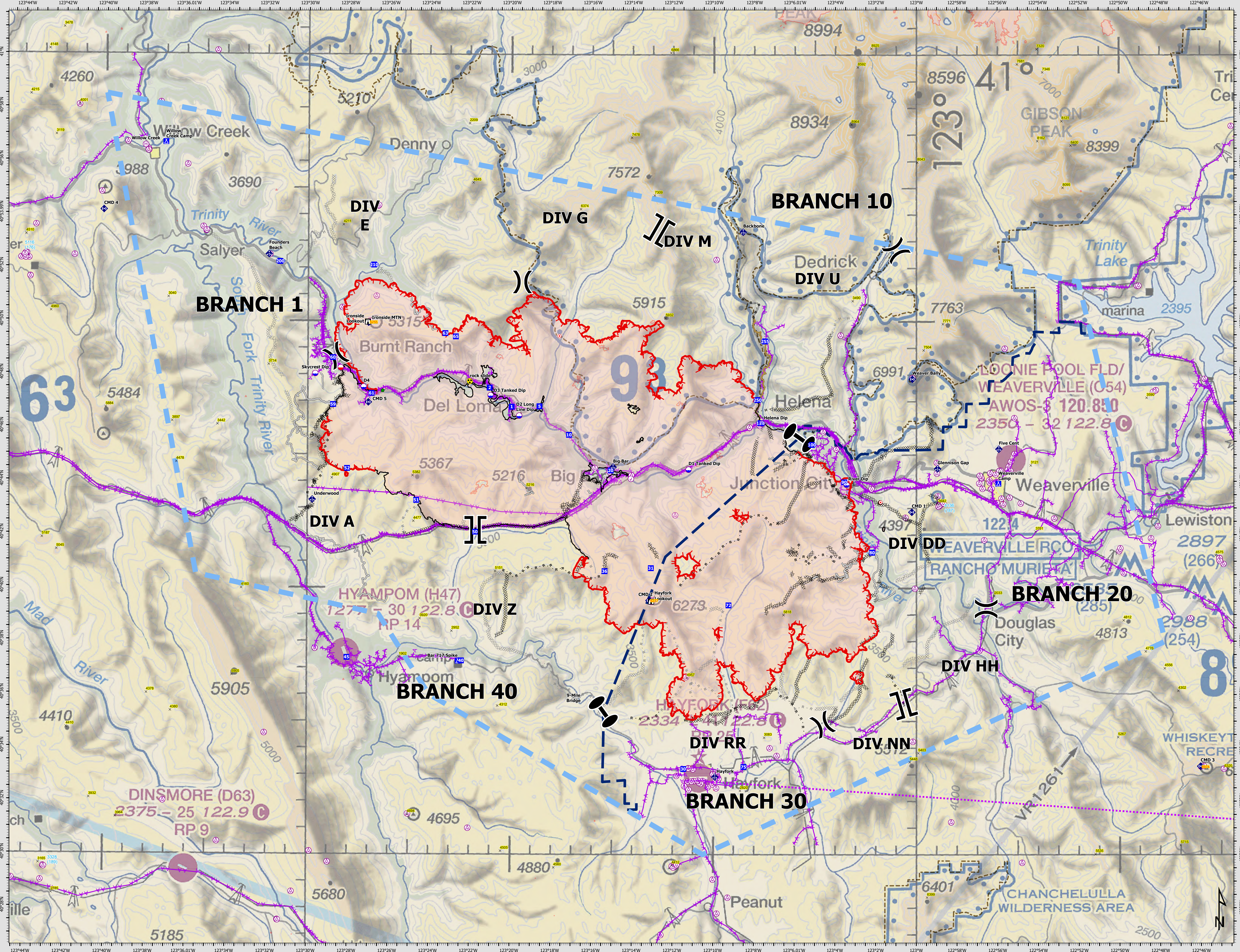


FC Point Type	Label	Latitude WGS84 DDM	Longitude WGS84 DDM
Check Point		40° 44.096' N	123° 14.070' W
Dip Site	D1 Tanked Dip	40° 44.442' N	123° 11.230' W
Dip Site	D2 Long Line Dip	40° 46.454' N	123° 19.590' W
Dip Site	D3 Tanked Dip	40° 47.217' N	123° 21.004' W
Dip Site	D4	40° 47.520' N	123° 27.271' W
Dip Site	Helena Dip	40° 46.175' N	123° 07.605' W
Dip Site	River Dip	40° 43.884' N	123° 03.443' W
Dip Site	Skycrest Dip	40° 48.017' N	123° 29.659' W
Drop Point	1	40° 46.789' N	123° 19.960' W
Drop Point	10	40° 45.740' N	123° 17.129' W
Drop Point	100	40° 45.380' N	123° 05.148' W
Drop Point	121	40° 46.194' N	123° 07.688' W
Drop Point	2	40° 47.502' N	123° 21.051' W
Drop Point	20	40° 44.407' N	123° 15.069' W
Drop Point	200	40° 52.215' N	123° 31.418' W
Drop Point	210	40° 52.100' N	123° 26.781' W
Drop Point	250	40° 47.058' N	123° 07.829' W
Drop Point	255	40° 49.260' N	123° 07.466' W
Drop Point	30	40° 33.211' N	123° 11.460' W
Drop Point	31	40° 40.745' N	123° 13.078' W
Drop Point	36	40° 40.628' N	123° 15.359' W
Drop Point	40	40° 37.262' N	123° 22.413' W
Drop Point	45	40° 37.375' N	123° 28.048' W
Drop Point	5	40° 46.808' N	123° 18.591' W
Drop Point	50	40° 42.093' N	123° 21.749' W
Drop Point	51	40° 43.278' N	123° 24.653' W
Drop Point	52	40° 44.463' N	123° 28.071' W
Drop Point	59	40° 46.857' N	123° 28.776' W
Drop Point	60	40° 48.617' N	123° 28.791' W
Drop Point	61	40° 47.286' N	123° 26.876' W
Drop Point	63	40° 49.540' N	123° 23.248' W
Drop Point	65	40° 49.418' N	123° 22.727' W
Drop Point	72	40° 39.354' N	123° 09.250' W
Drop Point	75	40° 33.291' N	123° 08.499' W
Drop Point	80	40° 41.337' N	123° 02.176' W
Drop Point	90	40° 43.977' N	123° 03.556' W
Hazard	rock slide	40° 47.746' N	123° 22.032' W
Helibase	Willow Creek	40° 56.571' N	123° 38.095' W
Lookout	Hayfork Lookout	40° 39.492' N	123° 13.062' W
Lookout	Ironside Lookout	40° 49.961' N	123° 27.075' W
Mobile Retardant Base		40° 48.240' N	123° 28.407' W
Mobile Weather Unit	Backbone	40° 53.357' N	123° 08.552' W
Mobile Weather Unit	Big Bar	40° 44.530' N	123° 14.952' W
Mobile Weather Unit	Five Cent	40° 45.219' N	122° 55.929' W
Mobile Weather Unit	Founders Beach	40° 52.489' N	123° 31.966' W
Mobile Weather Unit	Glennison Gap	40° 44.484' N	122° 58.951' W
Mobile Weather Unit	Hayfork	40° 32.911' N	123° 09.909' W
Mobile Weather Unit	Underwood	40° 43.290' N	123° 29.778' W
Repair Point		40° 47.389' N	123° 26.334' W
Repeater	CMD 1	40° 42.853' N	123° 00.220' W
Repeater	CMD 2	40° 39.532' N	123° 13.164' W
Repeater	CMD 3	40° 33.315' N	122° 46.015' W
Repeater	CMD 4	40° 54.137' N	123° 40.137' W
Repeater	CMD 5	40° 46.945' N	123° 27.035' W
Repeater	Ironside MTN	40° 49.935' N	123° 27.037' W
Repeater	Weaver Bally	40° 47.844' N	123° 00.196' W



# AIR OPERATIONS

Monument  
CA-SHF-001187  
08/21/2021 DAY

<ul style="list-style-type: none"> <li>Summit</li> <li>Air Operations</li> <li>Aerial Hazard</li> <li>Check Point</li> <li>Dip Site</li> <li>Mobile Retardant Base</li> <li>Helibase</li> <li>Assignment Breaks</li> <li>Division Break</li> <li>Branch Break</li> </ul>	<ul style="list-style-type: none"> <li>Zone Break</li> <li>Logistics</li> <li>Drop Point</li> <li>Camp</li> <li>Operations</li> <li>Lookout</li> <li>Fire</li> <li>Hot Spot - Spot Fire</li> <li>Repair</li> <li>Repair Point</li> </ul>	<ul style="list-style-type: none"> <li>Communications</li> <li>Mobile Weather Unit</li> <li>Repeater</li> <li>Safety</li> <li>Hazard</li> <li>Ops Completed</li> <li>Completed Dozer Line</li> <li>Completed Hand Line</li> <li>Completed Mixed Construction Line</li> <li>Completed Road as Line</li> </ul>	<ul style="list-style-type: none"> <li>Ops Planned</li> <li>Planned Dozer Line</li> <li>Planned Hand Line</li> <li>Planned Road as Line</li> <li>Reference</li> <li>Access or Improved Road</li> <li>Zone Boundary</li> <li>Repair</li> <li>Repair Line</li> </ul>	<ul style="list-style-type: none"> <li>Air Ops</li> <li>Aerial Hazard</li> <li>Route</li> <li>Temporary Flight Restriction</li> <li>Fire Perimeter</li> <li>Fire Edge</li> <li>Contained Line</li> <li>Wildfire Daily Fire Perimeter</li> </ul>
--	--	--	--	---

US Nautical Miles

