

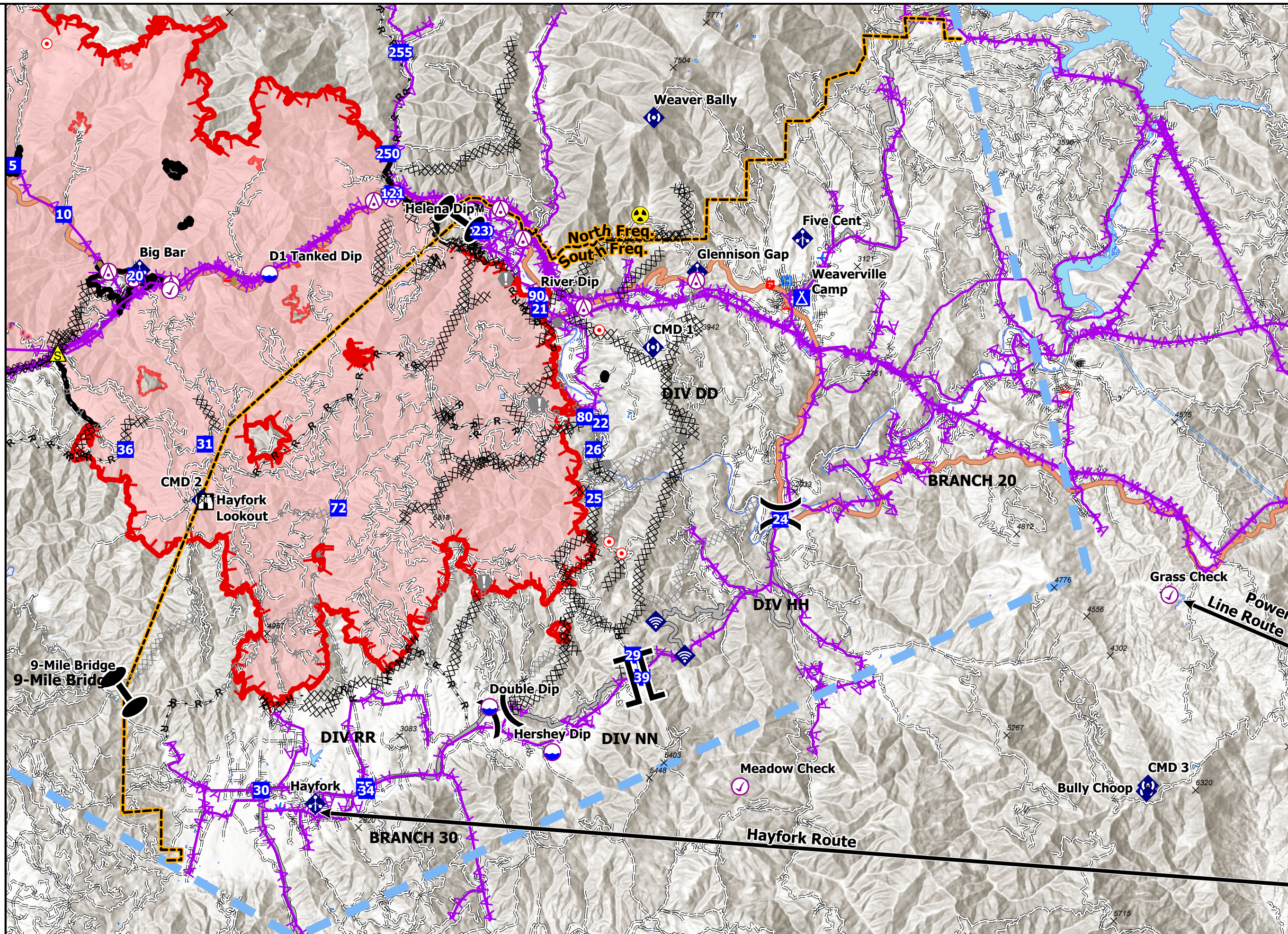


Air OPS

Monument Fire

CA-SHF-00187
August 21, 2021
0700 - 0700 NAD 83

- Aerial Hazard
- Check Point
- Dip Site
- Division Break
- Branch Break
- Zone Break
- Drop Point
- Camp
- Lookout
- Hot Spot - Spot Fire
- Value at Risk
- Other
- Mobile Weather Unit
- Internet Access
- Repeater
- Safety Zone
- Hazard
- Completed Dozer Line
- Completed Hand Line
- Completed Mixed Construction Line
- Completed Road as Line
- Planned Dozer Line
- Planned Hand Line
- Planned Road as Line
- Access or Improved Road
- Zone break
- Repair Line
- Road Repair
- Aerial Hazard
- Retardant Drop
- Route
- Temporary Flight Restriction
- Fire Edge
- Contained Line
- Wildfire Daily Fire Perimeter



IMT 5
8/20/2021
22:34 hrs



FC Point Type	Label	Lat	Long
Check Point		40° 44.096' N 123° 14.070' W	
Check Point	Meadow Check	40° 33.290' N 122° 57.720' W	
Check Point	Grass Check	40° 37.462' N 122° 45.399' W	
Dip Site	Skycrest Dip	40° 48.017' N 123° 29.659' W	
Dip Site	D1 Tanked Dip	40° 44.442' N 123° 11.230' W	
Dip Site	D2 Long Line Dip	40° 46.454' N 123° 19.590' W	
Dip Site	D3 Tanked Dip	40° 47.217' N 123° 21.004' W	
Dip Site	D4	40° 47.520' N 123° 27.271' W	
Dip Site	Helena Dip	40° 46.175' N 123° 07.605' W	
Dip Site	River Dip	40° 43.884' N 123° 03.443' W	
Dip Site	Double Dip	40° 35.020' N 123° 04.911' W	
Dip Site	Hershey Dip	40° 34.040' N 123° 03.111' W	
Drop Point	20	40° 44.407' N 123° 15.069' W	
Drop Point	10	40° 45.740' N 123° 17.129' W	
Drop Point	5	40° 46.808' N 123° 18.591' W	
Drop Point	50	40° 42.093' N 123° 21.749' W	
Drop Point	1	40° 46.789' N 123° 19.960' W	
Drop Point	31	40° 40.745' N 123° 13.078' W	
Drop Point	51	40° 43.278' N 123° 24.653' W	
Drop Point	60	40° 48.617' N 123° 28.791' W	
Drop Point	52	40° 44.463' N 123° 28.071' W	
Drop Point	2	40° 47.502' N 123° 21.051' W	
Drop Point	100	40° 45.380' N 123° 05.148' W	
Drop Point	121	40° 46.194' N 123° 07.688' W	
Drop Point	90	40° 43.977' N 123° 03.556' W	
Drop Point	59	40° 46.857' N 123° 28.776' W	
Drop Point	61	40° 47.286' N 123° 26.876' W	
Drop Point	80	40° 41.337' N 123° 02.176' W	
Drop Point	72	40° 39.354' N 123° 09.250' W	
Drop Point	36	40° 40.628' N 123° 15.359' W	
Drop Point	75	40° 33.291' N 123° 08.499' W	
Drop Point	29	40° 36.116' N 123° 00.553' W	
Drop Point	22	40° 41.200' N 123° 01.731' W	
Drop Point	34	40° 33.200' N 123° 08.439' W	
Drop Point	39	40° 35.668' N 123° 00.539' W	
Drop Point	65	40° 49.418' N 123° 22.727' W	
Drop Point	63	40° 49.540' N 123° 23.248' W	
Drop Point	21	40° 43.686' N 123° 03.471' W	
Drop Point	23	40° 45.386' N 123° 05.163' W	
Drop Point	24	40° 39.111' N 122° 56.570' W	
Drop Point	25	40° 39.564' N 123° 01.915' W	
Drop Point	26	40° 40.627' N 123° 01.925' W	
Drop Point	30	40° 33.211' N 123° 11.460' W	
Drop Point	45	40° 37.375' N 123° 28.048' W	
Drop Point	40	40° 37.262' N 123° 22.413' W	
Drop Point	200	40° 52.215' N 123° 31.418' W	
Drop Point	210	40° 52.100' N 123° 26.781' W	
Drop Point	250	40° 47.058' N 123° 07.829' W	
Drop Point	255	40° 49.260' N 123° 07.466' W	
Helibase	Willow Creek	40° 56.571' N 123° 38.095' W	
Helibase	Sky Ranch	40° 30.055' N 122° 22.668' W	
Repeater	Weaver Bally	40° 47.844' N 123° 00.196' W	
Repeater	Bully Choop	40° 33.186' N 122° 46.063' W	
Repeater	Ironside MTN	40° 49.935' N 123° 27.037' W	
Repeater	CMD 5	40° 46.945' N 123° 27.035' W	
Repeater	CMD 1	40° 42.853' N 123° 00.220' W	
Repeater	CMD 2	40° 39.532' N 123° 13.164' W	
Repeater	CMD 3	40° 33.315' N 122° 46.015' W	