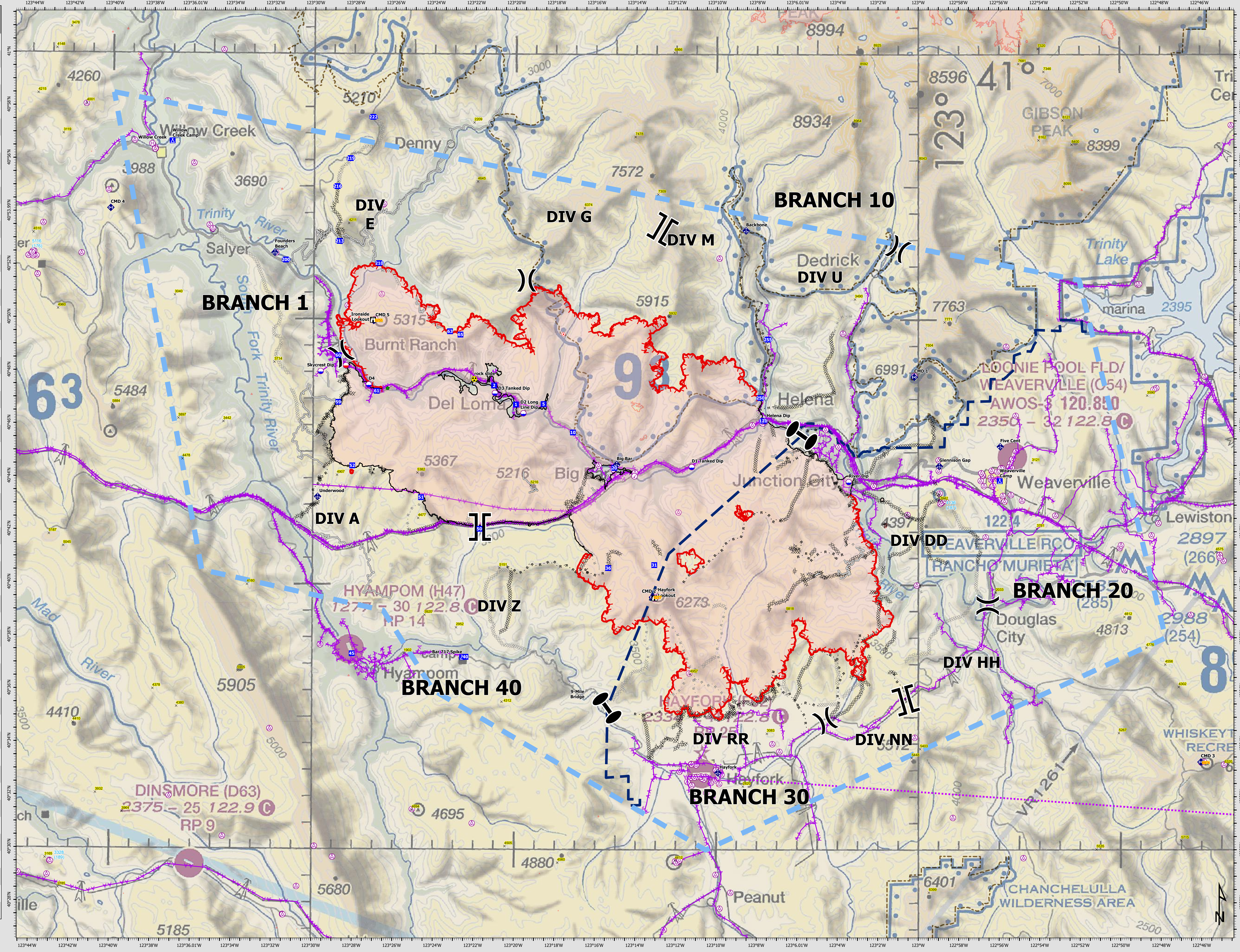


FC Point Type	Label	Latitude WGS84 DDM	Longitude WGS84 DDM
Check Point		40° 44.096' N	123° 14.070' W
Dip Site	D1 Tanked Dip	40° 44.442' N	123° 11.230' W
Dip Site	D2 Long Line Dip	40° 46.454' N	123° 19.590' W
Dip Site	D3 Tanked Dip	40° 47.217' N	123° 21.004' W
Dip Site	D4	40° 47.520' N	123° 27.271' W
Dip Site	Helena Dip	40° 46.175' N	123° 07.605' W
Dip Site	River Dip	40° 43.884' N	123° 03.443' W
Dip Site	Skycrest Dip	40° 48.017' N	123° 29.659' W
Drop Point	1	40° 46.789' N	123° 19.960' W
Drop Point	10	40° 45.740' N	123° 17.129' W
Drop Point	121	40° 46.194' N	123° 07.688' W
Drop Point	2	40° 47.502' N	123° 21.051' W
Drop Point	20	40° 44.407' N	123° 15.069' W
Drop Point	200	40° 52.215' N	123° 31.418' W
Drop Point	210	40° 52.100' N	123° 26.781' W
Drop Point	213	40° 52.928' N	123° 28.751' W
Drop Point	216	40° 54.994' N	123° 28.871' W
Drop Point	219	40° 56.055' N	123° 28.223' W
Drop Point	222	40° 57.615' N	123° 27.110' W
Drop Point	250	40° 47.058' N	123° 07.829' W
Drop Point	255	40° 49.260' N	123° 07.466' W
Drop Point	31	40° 40.745' N	123° 13.078' W
Drop Point	36	40° 40.628' N	123° 15.359' W
Drop Point	40	40° 37.262' N	123° 22.413' W
Drop Point	45	40° 37.375' N	123° 28.048' W
Drop Point	5	40° 46.808' N	123° 18.591' W
Drop Point	50	40° 42.093' N	123° 21.749' W
Drop Point	51	40° 43.278' N	123° 24.653' W
Drop Point	52	40° 44.463' N	123° 28.071' W
Drop Point	59	40° 46.857' N	123° 28.776' W
Drop Point	60	40° 48.617' N	123° 28.791' W
Drop Point	61	40° 47.286' N	123° 26.876' W
Drop Point	63	40° 49.540' N	123° 23.248' W
Drop Point	65	40° 49.418' N	123° 22.727' W
Hazard	rock slide	40° 47.746' N	123° 22.032' W
Helibase	Willow Creek	40° 56.571' N	123° 38.095' W
Lookout	Hayfork Lookout	40° 39.492' N	123° 13.062' W
Lookout	Ironside Lookout	40° 49.961' N	123° 27.075' W
Mobile Retardant Base		40° 48.240' N	123° 28.407' W
Mobile Weather Unit	Backbone	40° 53.357' N	123° 08.552' W
Mobile Weather Unit	Big Bar	40° 44.530' N	123° 14.952' W
Mobile Weather Unit	Five Cent	40° 45.219' N	122° 55.929' W
Mobile Weather Unit	Founders Beach	40° 52.489' N	123° 31.966' W
Mobile Weather Unit	Glennison Gap	40° 44.484' N	122° 58.951' W
Mobile Weather Unit	Hayfork	40° 32.911' N	123° 09.909' W
Mobile Weather Unit	Underwood	40° 43.290' N	123° 29.778' W
Repair Point		40° 47.389' N	123° 26.334' W
Repeater	CMD 1	40° 47.844' N	123° 00.196' W
Repeater	CMD 2	40° 39.532' N	123° 13.164' W
Repeater	CMD 3	40° 33.315' N	122° 46.015' W
Repeater	CMD 4	40° 54.137' N	123° 40.137' W
Repeater	CMD 5	40° 49.935' N	123° 27.037' W



# AIR OPERATIONS

Monument  
CA-SHF-001187  
08/23/2021 DAY

- ✕ Summit
- Ⓐ Air Operations
- Ⓐ Aerial Hazard
- Ⓢ Check Point
- Ⓢ Dip Site
- Ⓢ Mobile Retardant Base
- Ⓢ Helibase
- Assignment Breaks
- ⌋ Division Break
- ⌋ Branch Break
- ⌋ Zone Break
- Logistics
- Ⓢ Drop Point
- Ⓢ Camp
- Operations
- Ⓢ Lookout
- Fire
- Ⓢ Hot Spot - Spot Fire
- Repair
- Ⓢ Repair Point
- Communications
- Ⓢ Mobile Weather Unit
- Ⓢ Repeater
- Safety
- Ⓢ Hazard
- Ops Completed
- Ⓢ Completed Dozer Line
- Ⓢ Completed Hand Line
- Ⓢ Completed Mixed Construction Line
- Ⓢ Completed Road as Line
- Ops Planned
- Ⓢ Planned Dozer Line
- Planned Hand Line
- Planned Road as Line
- Reference
- Ⓢ Access or Improved Road
- Ⓢ Zone Boundary
- Air Ops
- Ⓢ Aerial Hazard
- Ⓢ Route
- Ⓢ Temporary Flight Restriction
- Fire Perimeter
- Ⓢ Fire Edge
- Ⓢ Contained Line
- Ⓢ Prescribed Fire
- Ⓢ Wildfire Daily Fire Perimeter

