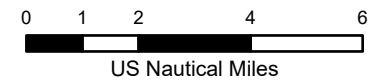
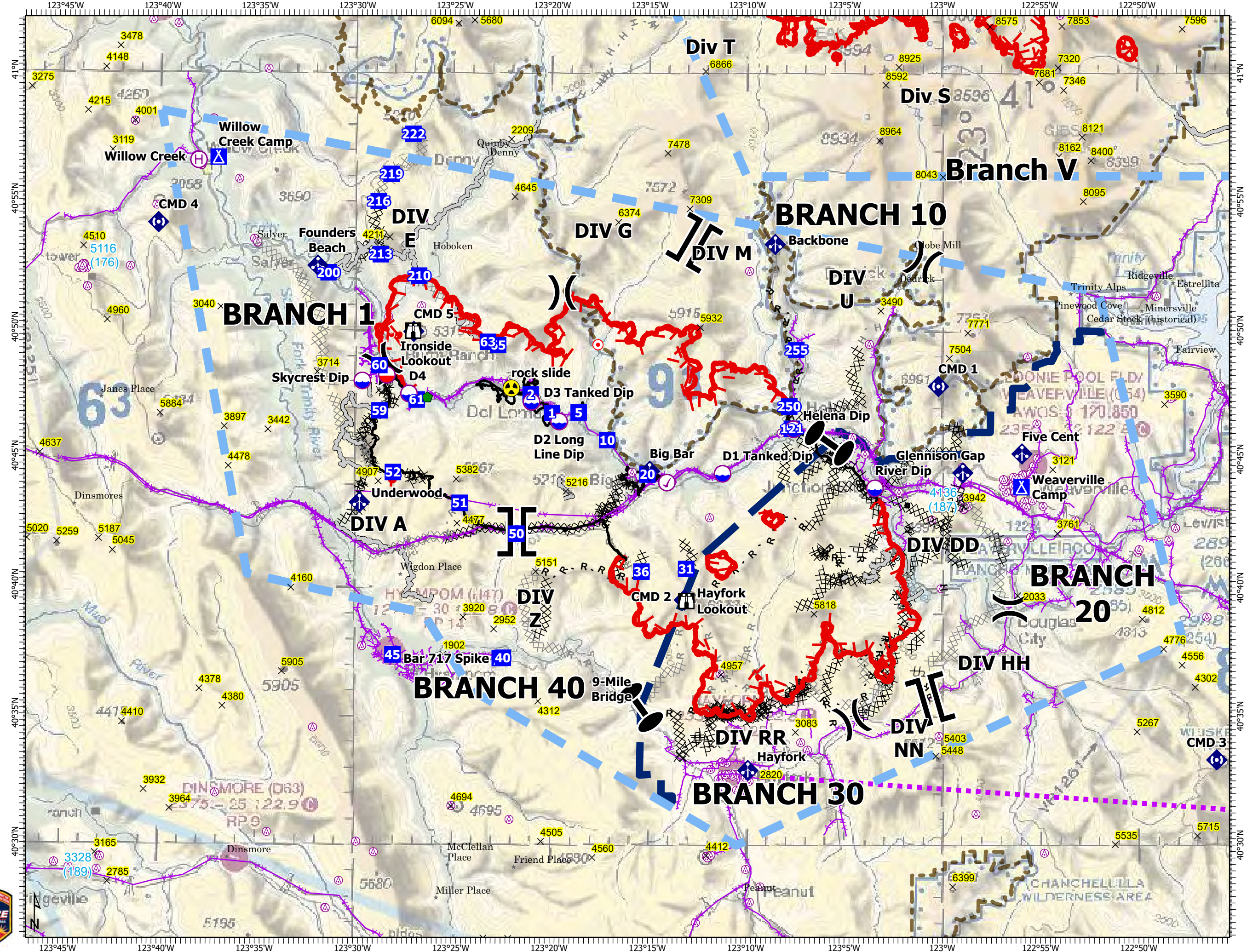


AIR OPS Pilot

Monument
CA-SHF-001187
08/23/2021 DAY

- ✕ Summit
- ⊗ Aerial Hazard
- ⊙ Check Point
- ⊕ Dip Site
- ⊖ Mobile Retardant Base
- ⊗ Helibase
- ⊗ Division Break
- ⊗ Branch Break
- ⊗ Zone Break
- ⊗ Drop Point
- ⊗ Camp
- ⊗ Lookout
- ⊗ Hot Spot - Spot Fire
- ⊗ Repair Point
- ⊗ Mobile Weather Unit
- ⊗ Repeater
- ⊗ Hazard
- ⊗ Completed Dozer Line
- H - Completed Hand Line
- M - Completed Mixed Construction Line
- R - Completed Road as Line
- ⊗ Planned Dozer Line
- H - Planned Hand Line
- R - Planned Road as Line
- Access or Improved Road
- Zone Boundary
- Aerial Hazard
- Route
- Temporary Flight Restriction
- Fire Edge
- Contained Line
- National Wilderness Area



FC Point	Label	Latitude WGS84	Longitude
Check Point		40° 44.096'	123° 14.070'
Dip Site	D1 Tanked	40° 44.442'	123° 11.230'
Dip Site	D2 Long Line	40° 46.454'	123° 19.590'
Dip Site	D3 Tanked	40° 47.217'	123° 21.004'
Dip Site	D4	40° 47.520'	123° 27.271'
Dip Site	Helena Dip	40° 46.175'	123° 07.605'
Dip Site	River Dip	40° 43.884'	123° 03.443'
Dip Site	Skycrest Dip	40° 48.017'	123° 29.659'
Drop Point	1	40° 46.789'	123° 19.960'
Drop Point	10	40° 45.740'	123° 17.129'
Drop Point	121	40° 46.194'	123° 07.688'
Drop Point	2	40° 47.502'	123° 21.051'
Drop Point	20	40° 44.407'	123° 15.069'
Drop Point	200	40° 52.215'	123° 31.418'
Drop Point	210	40° 52.100'	123° 26.781'
Drop Point	213	40° 52.928'	123° 28.751'
Drop Point	216	40° 54.994'	123° 28.871'
Drop Point	219	40° 56.055'	123° 28.223'
Drop Point	222	40° 57.615'	123° 27.110'
Drop Point	250	40° 47.058'	123° 07.829'
Drop Point	255	40° 49.260'	123° 07.466'
Drop Point	31	40° 40.745'	123° 13.078'
Drop Point	36	40° 40.628'	123° 15.359'
Drop Point	40	40° 37.262'	123° 22.413'
Drop Point	45	40° 37.375'	123° 28.048'
Drop Point	5	40° 46.808'	123° 18.591'
Drop Point	50	40° 42.093'	123° 21.749'
Drop Point	51	40° 43.278'	123° 24.653'
Drop Point	52	40° 44.463'	123° 28.071'
Drop Point	59	40° 46.857'	123° 28.776'
Drop Point	60	40° 48.617'	123° 28.791'
Drop Point	61	40° 47.286'	123° 26.876'
Drop Point	63	40° 49.540'	123° 23.248'
Drop Point	65	40° 49.418'	123° 22.727'
Hazard	rock slide	40° 47.746'	123° 22.032'
Helibase	Willow Creek	40° 56.571'	123° 38.095'
Hot Spot -		40° 49.446'	123° 17.614'
Lookout	Hayfork	40° 39.492'	123° 13.062'
Lookout	Ironside	40° 49.961'	123° 27.075'
Mobile		40° 48.240'	123° 28.407'
Mobile	Backbone	40° 53.357'	123° 08.552'
Mobile	Big Bar	40° 44.530'	123° 14.952'
Mobile	Five Cent	40° 45.219'	122° 55.929'
Mobile	Founders	40° 52.489'	123° 31.966'
Mobile	Glennison	40° 44.484'	122° 58.951'
Mobile	Hayfork	40° 32.911' N	123° 09.909'
Mobile	Underwood	40° 43.290'	123° 29.778'
Repair Point		40° 47.389'	123° 26.334'
Repeater	CMD 1	40° 47.844'	123° 00.196'
Repeater	CMD 2	40° 39.532'	123° 13.164'
Repeater	CMD 3	40° 33.315'	122° 46.015'
Repeater	CMD 4	40° 54.137'	123° 40.137'
Repeater	CMD 5	40° 49.935'	123° 27.037'
Zone Break		40° 35.348'	123° 15.397'
Zone Break		40° 45.645'	123° 05.773'