



Air OPS

Monument Fire

CA-SHF-00187

August 23, 2021

0700 - 0700 NAD 83

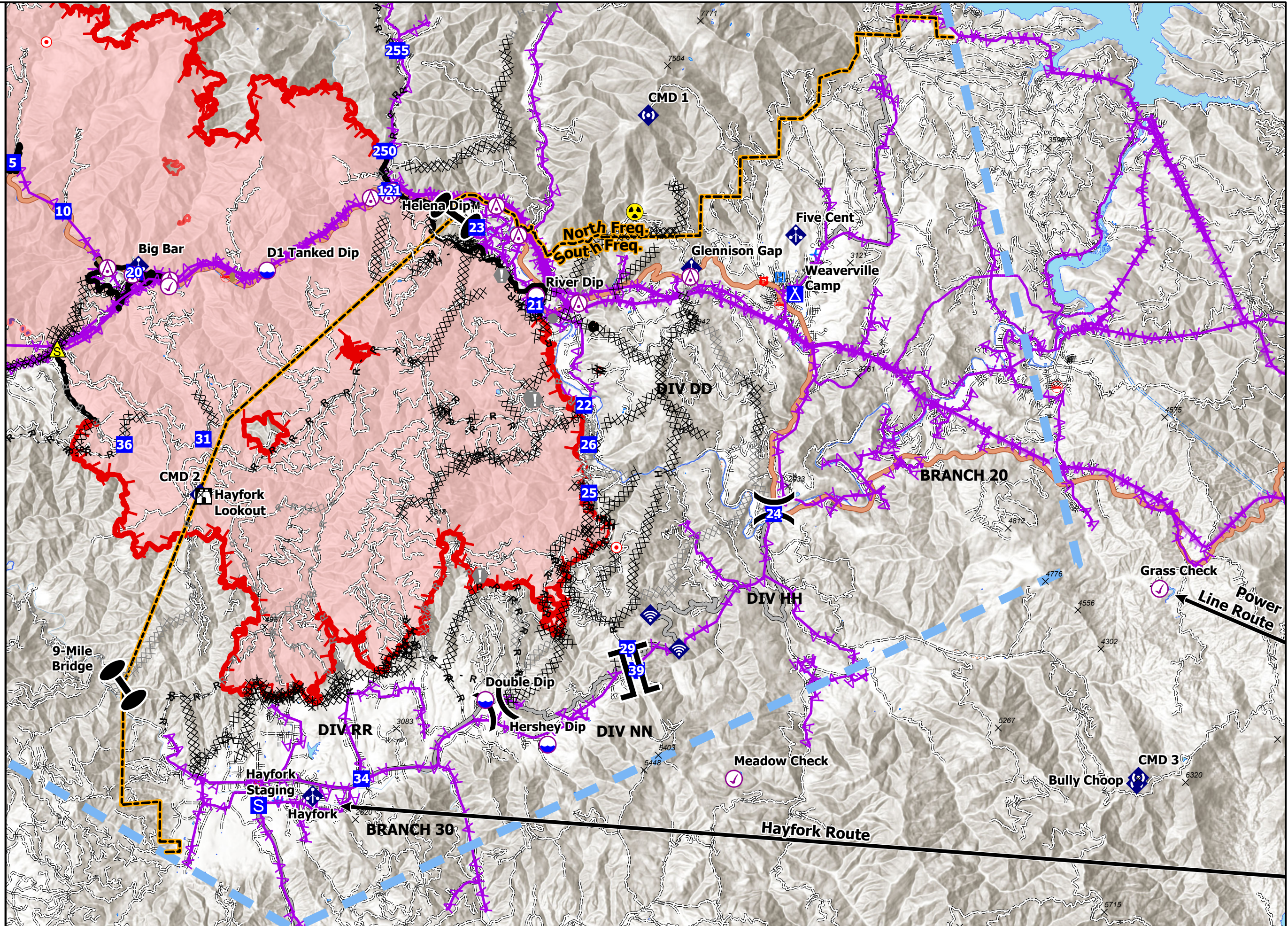
- XX Completed Dozer Line
- H - Completed Hand Line
- M - Completed Mixed Construction Line
- R - Completed Road as Line
- XX Planned Dozer Line
- H - Planned Hand Line
- R - Planned Road as Line
- == Access or Improved Road
- Zone break
- Repair Line
- Road Repair
- AA Aerial Hazard
- RD Retardant Drop
- Route
- Temporary Flight Restriction
- Fire Edge
- Contained Line
- Wildfire Daily Fire Perimeter
- Label Point
- Aerial Hazard
- Check Point
- Dip Site
-)(Division Break
- || Branch Break
- || Zone Break
- Drop Point
- ▲ Camp
- Staging Area
- ▲ Lookout
- Hot Spot - Spot Fire
- Value at Risk
- Other
- ◆ Mobile Weather Unit
- ◆ Internet Access
- ◆ Repeater
- ▲ Safety Zone
- Hazard



0 1 2 4 Miles



IMT 5
8/22/2021
22:09 hrs



FeatureCategory	Label	LatWGS84_DDM	LongWGS84_DDM
Check Point		40° 44.096' N	123° 14.069' W
Check Point	Meadow Check	40° 33.289' N	122° 57.720' W
Check Point	Grass Check	40° 37.461' N	122° 45.399' W
Dip Site	Skycrest Dip	40° 48.016' N	123° 29.658' W
Dip Site	D1 Tanked Dip	40° 44.442' N	123° 11.229' W
Dip Site	D2 Long Line Dip	40° 46.454' N	123° 19.589' W
Dip Site	D3 Tanked Dip	40° 47.216' N	123° 21.003' W
Dip Site	D4	40° 47.520' N	123° 27.270' W
Dip Site	Helena Dip	40° 46.175' N	123° 07.605' W
Dip Site	River Dip	40° 43.884' N	123° 03.442' W
Dip Site	Double Dip	40° 35.020' N	123° 04.910' W
Dip Site	Hershey Dip	40° 34.040' N	123° 03.110' W
Drop Point	20	40° 44.407' N	123° 15.068' W
Drop Point	10	40° 45.740' N	123° 17.128' W
Drop Point	5	40° 46.808' N	123° 18.590' W
Drop Point	50	40° 42.093' N	123° 21.748' W
Drop Point	1	40° 46.789' N	123° 19.960' W
Drop Point	31	40° 40.745' N	123° 13.077' W
Drop Point	51	40° 43.278' N	123° 24.652' W
Drop Point	60	40° 48.617' N	123° 28.790' W
Drop Point	52	40° 44.463' N	123° 28.070' W
Drop Point	2	40° 47.502' N	123° 21.050' W
Drop Point	121	40° 46.193' N	123° 07.687' W
Drop Point	59	40° 46.857' N	123° 28.775' W
Drop Point	61	40° 47.285' N	123° 26.875' W
Drop Point	36	40° 40.628' N	123° 15.358' W
Drop Point	29	40° 36.152' N	123° 00.797' W
Drop Point	22	40° 41.486' N	123° 02.063' W
Drop Point	34	40° 33.291' N	123° 08.498' W
Drop Point	39	40° 35.668' N	123° 00.539' W
Drop Point	65	40° 49.417' N	123° 22.727' W
Drop Point	63	40° 49.540' N	123° 23.248' W
Drop Point	21	40° 43.686' N	123° 03.470' W
Drop Point	23	40° 45.386' N	123° 05.162' W
Drop Point	24	40° 39.111' N	122° 56.569' W
Drop Point	25	40° 39.564' N	123° 01.914' W
Drop Point	26	40° 40.627' N	123° 01.924' W
Drop Point	45	40° 37.375' N	123° 28.047' W
Drop Point	40	40° 37.262' N	123° 22.412' W
Drop Point	200	40° 52.215' N	123° 31.417' W
Drop Point	210	40° 52.100' N	123° 26.780' W
Drop Point	250	40° 47.058' N	123° 07.828' W
Drop Point	255	40° 49.260' N	123° 07.465' W
Drop Point	216	40° 54.994' N	123° 28.871' W
Drop Point	213	40° 52.928' N	123° 28.750' W
Drop Point	219	40° 56.054' N	123° 28.222' W
Drop Point	222	40° 57.615' N	123° 27.110' W
Drop Point		40° 34.721' N	122° 21.536' W
Drop Point		40° 34.723' N	122° 21.537' W
Helibase	Willow Creek	40° 56.570' N	123° 38.094' W
Helibase	Sky Ranch	40° 30.055' N	122° 22.668' W
Helispot		40° 37.409' N	123° 22.651' W
Repeater	CMD 1	40° 47.843' N	123° 00.195' W
Repeater	Bully Choop	40° 33.185' N	122° 46.062' W
Repeater	CMD 5	40° 49.934' N	123° 27.036' W
Repeater	CMD 4	40° 54.136' N	123° 40.137' W
Repeater	CMD 2	40° 39.531' N	123° 13.163' W
Repeater	CMD 3	40° 33.314' N	122° 46.015' W