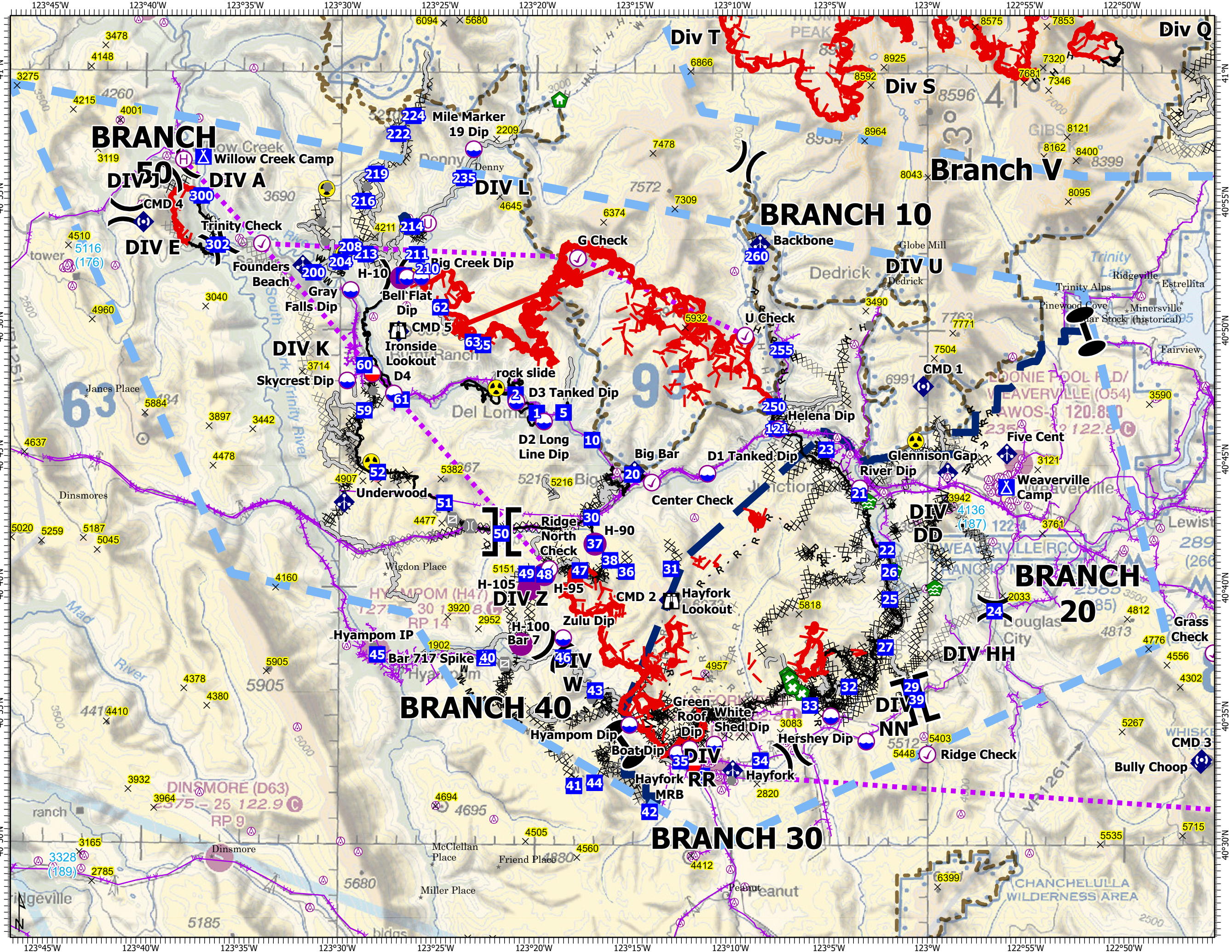
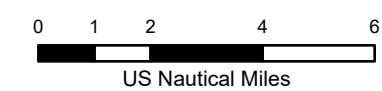


AIR OPS Pilot

Monument
CA-SHF-001187
09/02/2021

- ✕ Summit
- ⊙ Aerial Hazard
- ⊙ Check Point
- ⊙ Dip Site
- ⊙ Mobile Retardant Base
- ⊙ Helispot
- ⊙ Helibase
- ⊙ Unimproved Landing Area
-) (Division Break
- || Branch Break
- I Zone Break
- Drop Point
- ⊙ Camp
- ⊙ Staging Area
- ⊙ Lookout
- ⊙ Other
- ⊙ Gate
- ⊙ Bridge
- ⊙ Water Development or Draft Site
- ⊙ Structure Wrap
- ⊙ Retardant in Avoidance Area
- ⊙ Mobile Weather Unit
- ⊙ Repeater
- ⊙ Hazard
- ⊙ Completed Dozer Line
- ⊙ Completed Fuel Break
- H - Completed Hand Line
- M - Completed Mixed Construction Line
- R - Completed Road as Line
- ⊙ Planned Dozer Line
- H - Planned Hand Line
- M - Planned Mixed Construction Line
- R - Planned Road as Line
- Access or Improved Road
- Zone Boundary
- ⊙ Aerial Hazard
- ⊙ Retardant Drop
- ⊙ Route
- ⊙ Temporary Flight Restriction
- ⊙ Fire Edge
- ⊙ Contained Line
- ⊙ National Wilderness Area



FC Point Type	Label	Latitude DDM	Longitude DDM	FC Point Type	Label	Latitude DDM	Longitude DDM
Camp	Bar 717 Spike	40° 37.250' N	123° 22.577' W	Drop Point	26	40° 40.627' N	123° 01.925' W
Camp	Weaverville Camp	40° 43.925' N	122° 55.953' W	Drop Point	260	40° 52.900' N	123° 08.737' W
Camp	Willow Creek Camp	40° 56.684' N	123° 37.089' W	Drop Point	27	40° 37.702' N	123° 02.133' W
Check Point	Center Check	40° 44.096' N	123° 14.070' W	Drop Point	29	40° 36.152' N	123° 00.798' W
Check Point	G Check	40° 52.812' N	123° 17.886' W	Drop Point	30	40° 42.727' N	123° 17.152' W
Check Point	Grass Check	40° 37.462' N	122° 45.399' W	Drop Point	300	40° 55.172' N	123° 37.170' W
Check Point	Ridge Check	40° 33.540' N	122° 59.991' W	Drop Point	302	40° 53.266' N	123° 36.329' W
Check Point	Ridge North Check	40° 40.725' N	123° 19.286' W	Drop Point	31	40° 40.745' N	123° 13.078' W
Check Point	Trinity Check	40° 53.327' N	123° 34.069' W	Drop Point	32	40° 36.167' N	123° 03.991' W
Check Point	U Check	40° 49.815' N	123° 09.313' W	Drop Point	33	40° 35.438' N	123° 05.976' W
Dip Site	Bell Flat Dip	40° 52.027' N	123° 26.627' W	Drop Point	34	40° 33.291' N	123° 08.499' W
Dip Site	Big Creek Dip	40° 52.045' N	123° 25.899' W	Drop Point	35	40° 33.266' N	123° 12.571' W
Dip Site	Boat Dip	40° 33.565' N	123° 12.727' W	Drop Point	36	40° 40.628' N	123° 15.359' W
Dip Site	D1 Tanked Dip	40° 44.442' N	123° 11.230' W	Drop Point	37	40° 41.719' N	123° 16.969' W
Dip Site	D2 Long Line Dip	40° 46.454' N	123° 19.590' W	Drop Point	38	40° 41.067' N	123° 16.188' W
Dip Site	D3 Tanked Dip	40° 47.217' N	123° 21.004' W	Drop Point	39	40° 35.668' N	123° 00.539' W
Dip Site	D4	40° 47.520' N	123° 27.271' W	Drop Point	40	40° 37.262' N	123° 22.413' W
Dip Site	Double Dip	40° 35.020' N	123° 04.911' W	Drop Point	41	40° 32.298' N	123° 17.997' W
Dip Site	Gray Falls Dip	40° 51.533' N	123° 29.508' W	Drop Point	42	40° 31.295' N	123° 14.142' W
Dip Site	Green Roof Dip	40° 33.744' N	123° 12.094' W	Drop Point	43	40° 36.005' N	123° 16.931' W
Dip Site	Helena Dip	40° 46.175' N	123° 07.605' W	Drop Point	44	40° 32.418' N	123° 16.947' W
Dip Site	Hershey Dip	40° 34.040' N	123° 03.111' W	Drop Point	45	40° 37.375' N	123° 28.048' W
Dip Site	Hyampom Dip	40° 34.671' N	123° 15.180' W	Drop Point	46	40° 37.283' N	123° 18.574' W
Dip Site	Mile Marker 19 Dip	40° 57.027' N	123° 23.239' W	Drop Point	47	40° 40.670' N	123° 17.730' W
Dip Site	River Dip	40° 43.884' N	123° 03.443' W	Drop Point	48	40° 40.511' N	123° 19.540' W
Dip Site	Skycrest Dip	40° 48.017' N	123° 29.659' W	Drop Point	49	40° 40.534' N	123° 20.449' W
Dip Site	White Shed Dip	40° 33.920' N	123° 10.841' W	Drop Point	5	40° 46.808' N	123° 18.591' W
Dip Site	Zulu Dip	40° 38.040' N	123° 18.571' W	Drop Point	50	40° 42.093' N	123° 21.749' W
Drop Point	1	40° 46.789' N	123° 19.960' W	Drop Point	51	40° 43.278' N	123° 24.653' W
Drop Point	10	40° 45.740' N	123° 17.129' W	Drop Point	52	40° 44.463' N	123° 28.071' W
Drop Point	121	40° 46.194' N	123° 07.688' W	Drop Point	59	40° 46.857' N	123° 28.776' W
Drop Point	2	40° 47.502' N	123° 21.051' W	Drop Point	60	40° 48.617' N	123° 28.791' W
Drop Point	20	40° 44.407' N	123° 15.069' W	Drop Point	61	40° 47.286' N	123° 26.876' W
Drop Point	200	40° 52.215' N	123° 31.418' W	Drop Point	62	40° 50.880' N	123° 24.912' W
Drop Point	204	40° 52.631' N	123° 30.031' W	Drop Point	63	40° 49.540' N	123° 23.248' W
Drop Point	208	40° 53.212' N	123° 29.540' W	Drop Point	65	40° 49.418' N	123° 22.727' W
Drop Point	21	40° 43.686' N	123° 03.471' W	Helibase	Willow Creek	40° 56.571' N	123° 38.095' W
Drop Point	210	40° 52.100' N	123° 26.781' W	Helispot	H-10	40° 52.020' N	123° 26.920' W
Drop Point	211	40° 52.932' N	123° 26.125' W	Helispot	H-100	40° 37.792' N	123° 20.712' W
Drop Point	213	40° 52.928' N	123° 28.751' W	Helispot	H-105	40° 39.950' N	123° 20.328' W
Drop Point	214	40° 54.011' N	123° 26.393' W	Helispot	H-90	40° 41.698' N	123° 16.961' W
Drop Point	216	40° 54.994' N	123° 28.871' W	Helispot	H-95	40° 40.507' N	123° 19.547' W
Drop Point	219	40° 56.055' N	123° 28.223' W	Lookout	Hayfork Lookout	40° 39.492' N	123° 13.062' W
Drop Point	22	40° 41.487' N	123° 02.063' W	Lookout	Ironside Lookout	40° 49.961' N	123° 27.075' W
Drop Point	222	40° 57.615' N	123° 27.110' W	Mobile Retardant Base		40° 48.283' N	123° 28.375' W
Drop Point	224	40° 58.316' N	123° 26.344' W	Mobile Retardant Base	Hayfork MRB	40° 33.132' N	123° 11.926' W
Drop Point	23	40° 45.386' N	123° 05.163' W	Repeater	Bully Choop	40° 33.186' N	122° 46.063' W
Drop Point	235	40° 55.908' N	123° 23.723' W	Repeater	CMD 1	40° 47.844' N	123° 00.196' W
Drop Point	24	40° 39.111' N	122° 56.570' W	Repeater	CMD 2	40° 39.532' N	123° 13.164' W
Drop Point	25	40° 39.564' N	123° 01.915' W	Repeater	CMD 3	40° 33.315' N	122° 46.015' W
Drop Point	250	40° 47.058' N	123° 07.829' W	Repeater	CMD 4	40° 54.137' N	123° 40.137' W
Drop Point	255	40° 49.260' N	123° 07.466' W	Repeater	CMD 5	40° 49.935' N	123° 27.037' W