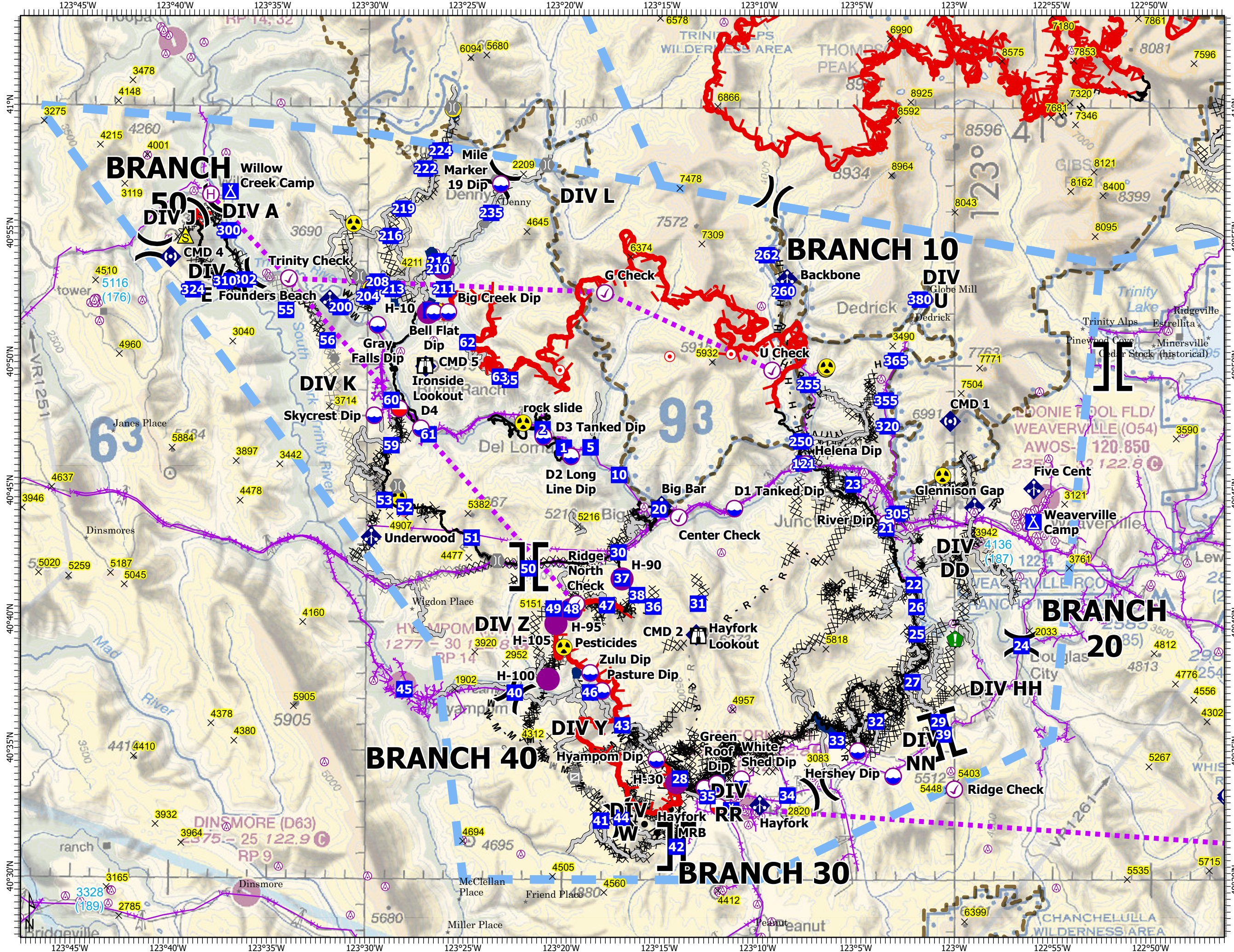


AIR OPS Pilot

Monument
CA-SHF-001187
09/09/2021

- ✕ Summit
- ⊕ Aerial Hazard
- ⊙ Check Point
- ⊖ Dip Site
- ⊖ Mobile Retardant Base
- ⊖ Helispot
- ⊖ Helibase
- ⊖ Division Break
- ⊖ Branch Break
- ⊖ Drop Point
- ⊖ Camp
- ⊖ Staging Area
- ⊖ Lookout
- ⊖ Hot Spot - Spot Fire
- ⊖ Other
- ⊖ Gate
- ⊖ Bridge
- ⊖ Resource Location
- ⊖ Mobile Weather Unit
- ⊖ Repeater
- ⊖ Safety Zone
- ⊖ Hazard
- ⊖ Active Burnout
- ⊖ Completed Dozer Line
- ⊖ Completed Fuel Break
- ⊖ Completed Hand Line
- ⊖ Completed Mixed Construction Line
- ⊖ Completed Road as Line
- ⊖ Planned Dozer Line
- ⊖ Planned Hand Line
- ⊖ Planned Mixed Construction Line
- ⊖ Planned Road as Line
- ⊖ Access or Improved Road
- ⊖ Zone Boundary
- ⊖ Aerial Hazard
- ⊖ Retardant Drop
- ⊖ Route
- ⊖ Temporary Flight Restriction
- ⊖ Fire Edge
- ⊖ Contained Line
- ⊖ National Wilderness Area

0 0.5 1 2 3 4 5
US Nautical Miles



| FC Point Type | Label | Latitude DDM | Longitude DDM |
|---------------|--------------------|--------------------|---------------------|
| Camp | Hayfork Camp | | |
| Camp | Weaverville Camp | 40° 43.925' N | 122° 55.952' W |
| Camp | Willow Creek Camp | 40° 56.683' N | 123° 37.089' W |
| Check Point | Center Check | 40° 44.096' N | 123° 14.069' W |
| Check Point | G Check | 40° 52.812' N | 123° 17.885' W |
| Check Point | Grass Check | 40° 37.461' N | 122° 45.399' W |
| Check Point | Ridge Check | 40° 33.540' N | 122° 59.990' W |
| Check Point | Ridge North Check | 40° 40.725' N | 123° 19.285' W |
| Check Point | Trinity Check | 40° 53.327' N | 123° 34.068' W |
| Check Point | U Check | 40° 49.815' N | 123° 09.312' W |
| Dip Site | Bell Flat Dip | 40° 52.027' N | 123° 26.626' W |
| Dip Site | Big Creek Dip | 40° 52.045' N | 123° 25.898' W |
| Dip Site | Boat Dip | 40° 33.565' N | 123° 12.726' W |
| Dip Site | D1 Tanked Dip | 40° 44.442' N | 123° 11.229' W |
| Dip Site | D2 Long Line Dip | 40° 46.454' N | 123° 19.589' W |
| Dip Site | D3 Tanked Dip | 40° 47.216' N | 123° 21.003' W |
| Dip Site | D4 | 40° 47.520' N | 123° 27.270' W |
| Dip Site | Double Dip | 40° 35.020' N | 123° 04.910' W |
| Dip Site | Gray Falls Dip | 40° 51.533' N | 123° 29.507' W |
| Dip Site | Green Roof Dip | 40° 33.743' N | 123° 12.094' W |
| Dip Site | Helena Dip | 40° 46.175' N | 123° 07.605' W |
| Dip Site | Hershey Dip | 40° 34.040' N | 123° 03.110' W |
| Dip Site | Hyampom Dip | 40° 34.671' N | 123° 15.179' W |
| Dip Site | Mile Marker 19 Dip | 40° 57.027' N | 123° 23.238' W |
| Dip Site | Pasture Dip | 40° 37.341' N | 123° 17.968' W |
| Dip Site | River Dip | 40° 43.884' N | 123° 03.442' W |
| Dip Site | Skycrest Dip | 40° 48.016' N | 123° 29.658' W |
| Dip Site | White Shed Dip | 40° 33.920' N | 123° 10.840' W |
| Dip Site | Zulu Dip | 40° 38.040' N | 123° 18.570' W |
| Drop Point | 1 | 40° 46.789' N | 123° 19.960' W |
| Drop Point | 10 | 40° 45.740' N | 123° 17.128' W |
| Drop Point | 121 | 40° 46.193' N | 123° 07.687' W |
| Drop Point | 2 | 40° 47.502' N | 123° 21.050' W |
| Drop Point | 20 | 40° 44.407' N | 123° 15.068' W |
| Drop Point | 200 | 40° 52.215' N | 123° 31.417' W |
| Drop Point | 204 | 40° 52.631' N | 123° 30.030' W |
| Drop Point | 208 | 40° 53.211' N | 123° 29.539' W |
| Drop Point | 21 | 40° 43.686' N | 123° 03.470' W |
| Drop Point | 210 | 40° 52.100' N | 123° 26.780' W |
| Drop Point | 211 | 40° 52.931' N | 123° 26.125' W |
| Drop Point | 213 | 40° 52.928' N | 123° 28.750' W |
| Drop Point | 214 | 40° 54.010' N | 123° 26.393' W |
| Drop Point | 216 | 40° 54.994' N | 123° 28.871' W |
| Drop Point | 219 | 40° 56.054' N | 123° 28.222' W |
| Drop Point | 22 | 40° 41.486' N | 123° 02.063' W |
| Drop Point | 222 | 40° 57.615' N | 123° 27.110' W |
| Drop Point | 224 | 40° 58.316' N | 123° 26.343' W |
| Drop Point | 23 | 40° 45.386' N | 123° 05.162' W |
| Drop Point | 235 | 40° 55.908' N | 123° 23.722' W |
| Drop Point | 24 | 40° 39.111' N | 122° 56.569' W |
| Drop Point | 25 | 40° 39.564' N | 123° 01.914' W |
| Drop Point | 250 | 40° 47.058' N | 123° 07.828' W |
| Drop Point | 255 | 40° 49.260' N | 123° 07.465' W |
| Drop Point | 26 | 40° 40.627' N | 123° 01.924' W |
| Drop Point | 260 | 40° 52.900' N | 123° 08.737' W |
| Drop Point | 262 | 40° 54.29700000' N | 123° 09.59700000' W |
| Drop Point | 27 | 40° 37.702' N | 123° 02.132' W |
| Drop Point | 28 | 40° 33.939' N | 123° 13.984' W |
| Drop Point | 29 | 40° 36.152' N | 123° 00.797' W |
| Drop Point | 30 | 40° 42.727' N | 123° 17.151' W |
| Drop Point | 300 | 40° 55.172' N | 123° 37.170' W |

| FC Point Type | Label | Latitude DDM | Longitude DDM |
|-----------------------|-------------------|--------------------|---------------------|
| Drop Point | 302 | 40° 53.266' N | 123° 36.329' W |
| Drop Point | 305 | 40° 45.85666668' N | 123° 02.98999998' W |
| Drop Point | 31 | 40° 40.745' N | 123° 13.077' W |
| Drop Point | 310 | 40° 53.205' N | 123° 37.345' W |
| Drop Point | 32 | 40° 36.167' N | 123° 03.990' W |
| Drop Point | 320 | 40° 47.65166664' N | 123° 03.40999998' W |
| Drop Point | 324 | 40° 52.86906438' N | 123° 38.97792114' W |
| Drop Point | 33 | 40° 35.437' N | 123° 05.976' W |
| Drop Point | 34 | 40° 33.291' N | 123° 08.498' W |
| Drop Point | 35 | 40° 33.265' N | 123° 12.570' W |
| Drop Point | 355 | 40° 48.64999998' N | 123° 03.49166664' W |
| Drop Point | 36 | 40° 40.628' N | 123° 15.358' W |
| Drop Point | 365 | 40° 50.19742680' N | 123° 02.98601748' W |
| Drop Point | 37 | 40° 41.719' N | 123° 16.969' W |
| Drop Point | 38 | 40° 41.067' N | 123° 16.188' W |
| Drop Point | 380 | 40° 52.57333332' N | 123° 01.75500000' W |
| Drop Point | 39 | 40° 35.668' N | 123° 00.539' W |
| Drop Point | 40 | 40° 37.262' N | 123° 22.412' W |
| Drop Point | 41 | 40° 32.297' N | 123° 17.996' W |
| Drop Point | 42 | 40° 31.295' N | 123° 14.142' W |
| Drop Point | 43 | 40° 36.005' N | 123° 16.930' W |
| Drop Point | 44 | 40° 32.417' N | 123° 16.946' W |
| Drop Point | 45 | 40° 37.375' N | 123° 28.047' W |
| Drop Point | 46 | 40° 37.282' N | 123° 18.574' W |
| Drop Point | 47 | 40° 40.670' N | 123° 17.730' W |
| Drop Point | 48 | 40° 40.511' N | 123° 19.539' W |
| Drop Point | 49 | 40° 40.534' N | 123° 20.449' W |
| Drop Point | 5 | 40° 46.808' N | 123° 18.590' W |
| Drop Point | 50 | 40° 42.093' N | 123° 21.748' W |
| Drop Point | 51 | 40° 43.278' N | 123° 24.652' W |
| Drop Point | 52 | 40° 44.463' N | 123° 28.070' W |
| Drop Point | 53 | 40° 44.727' N | 123° 29.108' W |
| Drop Point | 55 | 40° 50.89750400' N | 123° 34.21115550' W |
| Drop Point | 56 | 40° 50.922' N | 123° 32.076' W |
| Drop Point | 59 | 40° 46.857' N | 123° 28.775' W |
| Drop Point | 60 | 40° 48.617' N | 123° 28.790' W |
| Drop Point | 61 | 40° 47.285' N | 123° 26.875' W |
| Drop Point | 62 | 40° 50.880' N | 123° 24.912' W |
| Drop Point | 63 | 40° 49.540' N | 123° 23.248' W |
| Drop Point | 65 | 40° 49.417' N | 123° 22.727' W |
| Helibase | Willow Creek | 40° 56.570' N | 123° 38.094' W |
| Helispot | | 40° 53.764' N | 123° 26.162' W |
| Helispot | H-10 | 40° 52.019' N | 123° 26.919' W |
| Helispot | H-100 | 40° 37.792' N | 123° 20.712' W |
| Helispot | H-105 | 40° 39.950' N | 123° 20.327' W |
| Helispot | H-30 | 40° 33.783' N | 123° 14.153' W |
| Helispot | H-90 | 40° 41.697' N | 123° 16.960' W |
| Helispot | H-95 | 40° 40.507' N | 123° 19.546' W |
| Lookout | Hayfork Lookout | 40° 39.491' N | 123° 13.062' W |
| Lookout | Ironside Lookout | 40° 49.961' N | 123° 27.075' W |
| Mobile Retardant Base | | 40° 48.283' N | 123° 28.375' W |
| Mobile Retardant Base | Hayfork MRB | 40° 33.132' N | 123° 11.925' W |
| Repeater | Bully Choop | 40° 33.185' N | 122° 46.062' W |
| Repeater | CDF CMD-11 (T-14) | 40° 33.304' N | 122° 46.047' W |
| Repeater | CDF CMD-2 (T-14) | 40° 41.074' N | 122° 45.010' W |
| Repeater | CMD 1 | 40° 47.843' N | 123° 00.195' W |
| Repeater | CMD 2 | 40° 39.531' N | 123° 13.163' W |
| Repeater | CMD 3 | 40° 33.314' N | 122° 46.015' W |
| Repeater | CMD 4 | 40° 54.136' N | 123° 40.137' W |
| Repeater | CMD 5 | 40° 49.934' N | 123° 27.036' W |