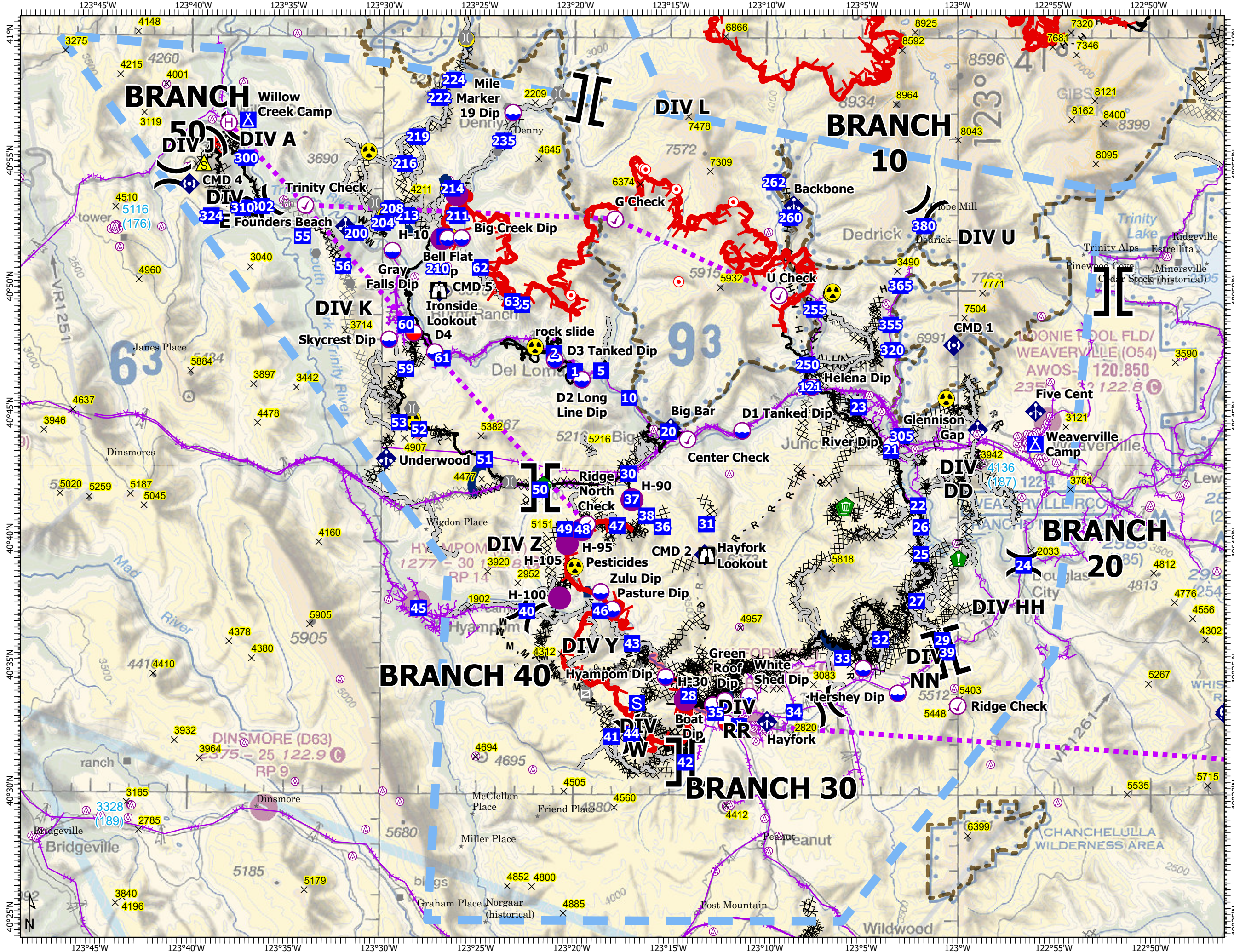
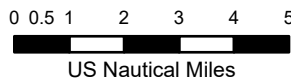


# AIR OPS Pilot

Monument  
CA-SHF-001187  
09/10/2021

- Summit
- Aerial Hazard
- Check Point
- Dip Site
- Mobile Retardant Base
- Helispot
- Helibase
- Division Break
- Branch Break
- Drop Point
- Camp
- Staging Area
- Lookout
- Hot Spot - Spot Fire
- Other
- Gate
- Bridge
- Water Development or Draft Site
- Resource Location
- Clean Up Area
- Mobile Weather Unit
- Repeater
- Safety Zone
- Hazard
- Active Burnout
- Completed Dozer Line
- Completed Fuel Break
- H - Completed Hand Line
- M - Completed Mixed Construction Line
- R - Completed Road as Line
- Planned Dozer Line
- H - Planned Hand Line
- M - Planned Mixed Construction Line
- R - Planned Road as Line
- Access or Improved Road
- Zone Boundary
- Aerial Hazard
- Retardant Drop
- Route
- Temporary Flight Restriction
- Fire Edge
- Contained Line
- National Wilderness Area





FC Point Type	Label	Latitude DDM	Longitude DDM
Camp	Hayfork Camp	40° 32.71847364' N	123° 11.36429064' W
Camp	Weaverville Camp	40° 43.925' N	122° 55.952' W
Camp	Willow Creek Camp	40° 56.683' N	123° 37.089' W
Check Point	Center Check	40° 44.096' N	123° 14.069' W
Check Point	G Check	40° 52.812' N	123° 17.885' W
Check Point	Grass Check	40° 37.461' N	122° 45.399' W
Check Point	Ridge Check	40° 33.540' N	122° 59.990' W
Check Point	Ridge North Check	40° 40.725' N	123° 19.285' W
Check Point	Trinity Check	40° 53.327' N	123° 34.068' W
Check Point	U Check	40° 49.815' N	123° 09.312' W
Dip Site	Bell Flat Dip	40° 52.027' N	123° 26.626' W
Dip Site	Big Creek Dip	40° 52.045' N	123° 25.898' W
Dip Site	Boat Dip	40° 33.565' N	123° 12.726' W
Dip Site	D1 Tanked Dip	40° 44.442' N	123° 11.229' W
Dip Site	D2 Long Line Dip	40° 46.454' N	123° 19.589' W
Dip Site	D3 Tanked Dip	40° 47.216' N	123° 21.003' W
Dip Site	D4	40° 47.520' N	123° 27.270' W
Dip Site	Double Dip	40° 35.020' N	123° 04.910' W
Dip Site	Gray Falls Dip	40° 51.533' N	123° 29.507' W
Dip Site	Green Roof Dip	40° 33.743' N	123° 12.094' W
Dip Site	Helena Dip	40° 46.175' N	123° 07.605' W
Dip Site	Hershey Dip	40° 34.040' N	123° 03.110' W
Dip Site	Hyampom Dip	40° 34.671' N	123° 15.179' W
Dip Site	Mile Marker 19 Dip	40° 57.027' N	123° 23.238' W
Dip Site	Pasture Dip	40° 37.341' N	123° 17.968' W
Dip Site	River Dip	40° 43.884' N	123° 03.442' W
Dip Site	Skycrest Dip	40° 48.016' N	123° 29.658' W
Dip Site	White Shed Dip	40° 33.920' N	123° 10.840' W
Dip Site	Zulu Dip	40° 38.040' N	123° 18.570' W
Drop Point	1	40° 46.789' N	123° 19.960' W
Drop Point	10	40° 45.740' N	123° 17.128' W
Drop Point	121	40° 46.193' N	123° 07.687' W
Drop Point	2	40° 47.502' N	123° 21.050' W
Drop Point	20	40° 44.407' N	123° 15.068' W
Drop Point	200	40° 52.215' N	123° 31.417' W
Drop Point	204	40° 52.631' N	123° 30.030' W
Drop Point	208	40° 53.211' N	123° 29.539' W
Drop Point	21	40° 43.686' N	123° 03.470' W
Drop Point	210	40° 52.100' N	123° 26.780' W
Drop Point	211	40° 52.931' N	123° 26.125' W
Drop Point	213	40° 52.928' N	123° 28.750' W
Drop Point	214	40° 54.010' N	123° 26.393' W
Drop Point	216	40° 54.994' N	123° 28.871' W
Drop Point	219	40° 56.054' N	123° 28.222' W
Drop Point	22	40° 41.486' N	123° 02.063' W
Drop Point	222	40° 57.615' N	123° 27.110' W
Drop Point	224	40° 58.316' N	123° 26.343' W
Drop Point	23	40° 45.386' N	123° 05.162' W
Drop Point	235	40° 55.908' N	123° 23.722' W
Drop Point	24	40° 39.111' N	122° 56.569' W
Drop Point	25	40° 39.564' N	123° 01.914' W
Drop Point	250	40° 47.058' N	123° 07.828' W
Drop Point	255	40° 49.260' N	123° 07.465' W
Drop Point	26	40° 40.627' N	123° 01.924' W
Drop Point	260	40° 52.900' N	123° 08.737' W
Drop Point	262	40° 54.29700000' N	123° 09.59700000' W
Drop Point	27	40° 37.702' N	123° 02.132' W
Drop Point	28	40° 33.939' N	123° 13.984' W
Drop Point	29	40° 36.152' N	123° 00.797' W
Drop Point	30	40° 42.727' N	123° 17.151' W
Drop Point	300	40° 55.172' N	123° 37.170' W

FC Point Type	Label	Latitude DDM	Longitude DDM
Drop Point	302	40° 53.266' N	123° 36.329' W
Drop Point	305	40° 45.85666668' N	123° 02.98999998' W
Drop Point	31	40° 40.745' N	123° 13.077' W
Drop Point	310	40° 53.205' N	123° 37.345' W
Drop Point	32	40° 36.167' N	123° 03.990' W
Drop Point	320	40° 47.65166664' N	123° 03.40999998' W
Drop Point	324	40° 52.86906438' N	123° 38.97792114' W
Drop Point	33	40° 35.437' N	123° 05.976' W
Drop Point	34	40° 33.291' N	123° 08.498' W
Drop Point	35	40° 33.265' N	123° 12.570' W
Drop Point	355	40° 48.64999998' N	123° 03.49166664' W
Drop Point	36	40° 40.628' N	123° 15.358' W
Drop Point	365	40° 50.19742680' N	123° 02.98601748' W
Drop Point	37	40° 41.719' N	123° 16.969' W
Drop Point	38	40° 41.067' N	123° 16.188' W
Drop Point	380	40° 52.57333332' N	123° 01.75500000' W
Drop Point	39	40° 35.668' N	123° 00.539' W
Drop Point	40	40° 37.262' N	123° 22.412' W
Drop Point	41	40° 32.297' N	123° 17.996' W
Drop Point	42	40° 31.295' N	123° 14.142' W
Drop Point	43	40° 36.005' N	123° 16.930' W
Drop Point	44	40° 32.417' N	123° 16.946' W
Drop Point	45	40° 37.375' N	123° 28.047' W
Drop Point	46	40° 37.282' N	123° 18.574' W
Drop Point	47	40° 40.670' N	123° 17.730' W
Drop Point	48	40° 40.511' N	123° 19.539' W
Drop Point	49	40° 40.534' N	123° 20.449' W
Drop Point	5	40° 46.808' N	123° 18.590' W
Drop Point	50	40° 42.093' N	123° 21.748' W
Drop Point	51	40° 43.278' N	123° 24.652' W
Drop Point	52	40° 44.463' N	123° 28.070' W
Drop Point	53	40° 44.727' N	123° 29.108' W
Drop Point	55	40° 50.89750400' N	123° 34.21115550' W
Drop Point	56	40° 50.922' N	123° 32.076' W
Drop Point	59	40° 46.857' N	123° 28.775' W
Drop Point	60	40° 48.617' N	123° 28.790' W
Drop Point	61	40° 47.285' N	123° 26.875' W
Drop Point	62	40° 50.880' N	123° 24.912' W
Drop Point	63	40° 49.540' N	123° 23.248' W
Drop Point	65	40° 49.417' N	123° 22.727' W
Helibase	Willow Creek	40° 56.570' N	123° 38.094' W
Helispot		40° 53.764' N	123° 26.162' W
Helispot	H-10	40° 52.019' N	123° 26.919' W
Helispot	H-100	40° 37.792' N	123° 20.712' W
Helispot	H-105	40° 39.950' N	123° 20.327' W
Helispot	H-30	40° 33.783' N	123° 14.153' W
Helispot	H-90	40° 41.697' N	123° 16.960' W
Helispot	H-95	40° 40.507' N	123° 19.546' W
Lookout	Hayfork Lookout	40° 39.491' N	123° 13.062' W
Lookout	Ironside Lookout	40° 49.961' N	123° 27.075' W
Mobile Retardant Base		40° 48.283' N	123° 28.375' W
Mobile Retardant Base	Hayfork MRB	40° 33.132' N	123° 11.925' W
Repeater	Bully Choop	40° 33.185' N	122° 46.062' W
Repeater	CDF CMD-11 (T-11)	40° 23.16700530' N	123° 08.75081958' W
Repeater	CDF CMD-11 (T-14)	40° 33.304' N	122° 46.047' W
Repeater	CDF CMD-2 (T-14)	40° 41.074' N	122° 45.010' W
Repeater	CMD 1	40° 47.843' N	123° 00.195' W
Repeater	CMD 2	40° 39.531' N	123° 13.163' W
Repeater	CMD 3	40° 33.314' N	122° 46.015' W
Repeater	CMD 4	40° 54.136' N	123° 40.137' W
Repeater	CMD 5	40° 49.934' N	123° 27.036' W