

AIR OPS Pilot

Monument

CA-SHF-001187

9/14/2021

- Wildfire Daily Fire Perimeter
- Active Burnout
- Completed Dozer Line
- Completed Fuel Break
- Completed Hand Line
- Completed Mixed Construction Line
- Completed Road as Line
- Planned Dozer Line
- Planned Hand Line
- Planned Mixed Construction Line
- Planned Road as Line
- Access or Improved Road
- Highlighted Feature
- Zone Boundary
- Aerial Hazard
- Retardant Drop
- Route
- Temporary Flight Restriction
- Fire Edge
- Contained Line

Air Operations

- Aerial Hazard
- Check Point
- Dip Site
- Mobile Retardant Base
- Helispot
- Helibase

Assignment Breaks

- Division Break
- Branch Break

Logistics

- Drop Point
- Camp
- Staging Area

Operations

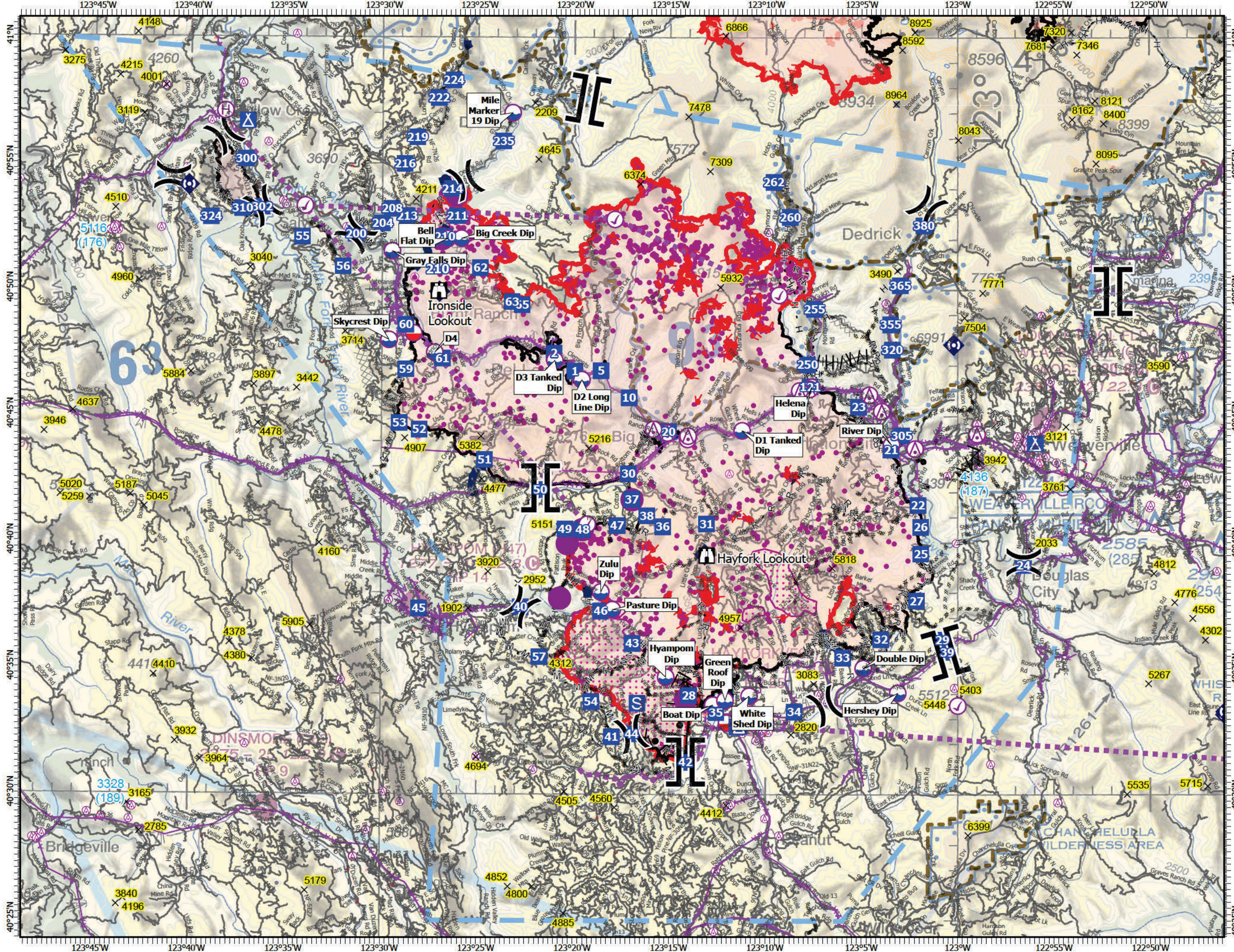
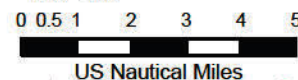
- Lookout

Communications

- Repeater
- Summit
- National Wilderness Area

IR 20210913 1909

- IR Heat Perimeter
- IR Intense Heat
- IR Scattered Heat
- IR Point



| FC Point Type | Label | Latitude DDM | Longitude DDM |
|---------------|-------------------|---------------|----------------|
| Camp | Bar 717 Spike | 40° 37.250' N | 123° 22.577' W |
| Camp | Weaverville Camp | 40° 43.925' N | 122° 55.953' W |
| Camp | Willow Creek Camp | 40° 56.684' N | 123° 37.089' W |
| Check Point | Center Check | 40° 44.096' N | 123° 14.070' W |
| Check Point | G Check | 40° 52.812' N | 123° 17.886' W |
| Check Point | Grass Check | 40° 37.461' N | 122° 45.399' W |
| Check Point | Ridge Check | 40° 33.540' N | 122° 59.991' W |
| Check Point | Ridge North Check | 40° 40.725' N | 123° 19.286' W |
| Check Point | Trinity Check | 40° 53.327' N | 123° 34.069' W |
| Check Point | U Check | 40° 49.815' N | 123° 09.313' W |
| Dip Site | Boat Dip | 40° 33.565' N | 123° 12.727' W |
| Dip Site | D1 Tanked Dip | 40° 44.442' N | 123° 11.230' W |
| Dip Site | D2 Long Line Dip | 40° 46.454' N | 123° 19.590' W |
| Dip Site | D3 Tanked Dip | 40° 47.217' N | 123° 21.004' W |
| Dip Site | D4 | 40° 47.520' N | 123° 27.271' W |
| Dip Site | Double Dip | 40° 35.020' N | 123° 04.911' W |
| Dip Site | Green Roof Dip | 40° 33.744' N | 123° 12.094' W |
| Dip Site | Helena Dip | 40° 46.175' N | 123° 07.605' W |
| Dip Site | Hershey Dip | 40° 34.040' N | 123° 03.111' W |
| Dip Site | Hyampom Dip | 40° 34.671' N | 123° 15.180' W |
| Dip Site | River Dip | 40° 43.884' N | 123° 03.443' W |
| Dip Site | Skycrest Dip | 40° 48.017' N | 123° 29.659' W |
| Dip Site | White Shed Dip | 40° 33.920' N | 123° 10.841' W |
| Dip Site | Zulu Dip | 40° 38.040' N | 123° 18.571' W |
| Drop Point | 1 | 40° 46.789' N | 123° 19.960' W |
| Drop Point | 10 | 40° 45.740' N | 123° 17.129' W |
| Drop Point | 121 | 40° 46.194' N | 123° 07.688' W |
| Drop Point | 2 | 40° 47.502' N | 123° 21.051' W |
| Drop Point | 20 | 40° 44.407' N | 123° 15.069' W |
| Drop Point | 200 | 40° 52.215' N | 123° 31.418' W |
| Drop Point | 204 | 40° 52.631' N | 123° 30.031' W |
| Drop Point | 208 | 40° 53.212' N | 123° 29.540' W |
| Drop Point | 21 | 40° 43.686' N | 123° 03.471' W |
| Drop Point | 210 | 40° 52.100' N | 123° 26.781' W |
| Drop Point | 211 | 40° 52.932' N | 123° 26.125' W |
| Drop Point | 213 | 40° 52.928' N | 123° 28.751' W |
| Drop Point | 214 | 40° 54.177' N | 123° 26.632' W |
| Drop Point | 216 | 40° 54.994' N | 123° 28.871' W |
| Drop Point | 219 | 40° 56.055' N | 123° 28.223' W |
| Drop Point | 22 | 40° 41.487' N | 123° 02.063' W |
| Drop Point | 222 | 40° 57.615' N | 123° 27.110' W |
| Drop Point | 224 | 40° 58.332' N | 123° 26.296' W |
| Drop Point | 23 | 40° 45.386' N | 123° 05.163' W |
| Drop Point | 235 | 40° 55.908' N | 123° 23.723' W |
| Drop Point | 24 | 40° 39.111' N | 122° 56.570' W |
| Drop Point | 25 | 40° 39.564' N | 123° 01.915' W |
| Drop Point | 250 | 40° 47.058' N | 123° 07.829' W |
| Drop Point | 255 | 40° 49.260' N | 123° 07.466' W |
| Drop Point | 26 | 40° 40.627' N | 123° 01.925' W |

| FC Point Type | Label | Latitude DDM | Longitude DDM |
|-----------------------|------------------|---------------|----------------|
| Drop Point | 260 | 40° 52.900' N | 123° 08.737' W |
| Drop Point | 27 | 40° 37.702' N | 123° 02.133' W |
| Drop Point | 29 | 40° 36.152' N | 123° 00.798' W |
| Drop Point | 30 | 40° 42.727' N | 123° 17.152' W |
| Drop Point | 31 | 40° 40.745' N | 123° 13.078' W |
| Drop Point | 32 | 40° 36.167' N | 123° 03.991' W |
| Drop Point | 33 | 40° 35.834' N | 123° 06.118' W |
| Drop Point | 34 | 40° 33.291' N | 123° 08.499' W |
| Drop Point | 35 | 40° 33.266' N | 123° 12.571' W |
| Drop Point | 36 | 40° 40.628' N | 123° 15.359' W |
| Drop Point | 37 | 40° 41.719' N | 123° 16.969' W |
| Drop Point | 38 | 40° 41.067' N | 123° 16.188' W |
| Drop Point | 39 | 40° 35.668' N | 123° 00.539' W |
| Drop Point | 40 | 40° 37.262' N | 123° 22.413' W |
| Drop Point | 41 | 40° 32.298' N | 123° 17.997' W |
| Drop Point | 42 | 40° 31.295' N | 123° 14.142' W |
| Drop Point | 43 | 40° 36.005' N | 123° 16.931' W |
| Drop Point | 44 | 40° 32.418' N | 123° 16.947' W |
| Drop Point | 45 | 40° 37.375' N | 123° 28.048' W |
| Drop Point | 46 | 40° 37.283' N | 123° 18.574' W |
| Drop Point | 47 | 40° 40.670' N | 123° 17.730' W |
| Drop Point | 48 | 40° 40.511' N | 123° 19.540' W |
| Drop Point | 49 | 40° 40.534' N | 123° 20.449' W |
| Drop Point | 5 | 40° 46.808' N | 123° 18.591' W |
| Drop Point | 50 | 40° 42.093' N | 123° 21.749' W |
| Drop Point | 51 | 40° 43.278' N | 123° 24.653' W |
| Drop Point | 52 | 40° 44.463' N | 123° 28.071' W |
| Drop Point | 59 | 40° 46.857' N | 123° 28.776' W |
| Drop Point | 60 | 40° 48.617' N | 123° 28.791' W |
| Drop Point | 61 | 40° 47.286' N | 123° 26.876' W |
| Drop Point | 62 | 40° 50.880' N | 123° 24.912' W |
| Drop Point | 63 | 40° 49.540' N | 123° 23.248' W |
| Drop Point | 65 | 40° 49.418' N | 123° 22.727' W |
| Helibase | Willow Creek | 40° 56.571' N | 123° 38.095' W |
| Helispot | H-10 | 40° 52.020' N | 123° 26.920' W |
| Helispot | H-100 | 40° 37.792' N | 123° 20.712' W |
| Helispot | H-105 | 40° 39.950' N | 123° 20.328' W |
| Helispot | H-90 | 40° 40.697' N | 123° 16.960' W |
| Helispot | H-95 | 40° 40.507' N | 123° 19.547' W |
| Lookout | Hayfork Lookout | 40° 39.492' N | 123° 13.062' W |
| Lookout | Ironside Lookout | 40° 49.961' N | 123° 27.075' W |
| Mobile Retardant Base | | 40° 48.240' N | 123° 28.407' W |
| Mobile Retardant Base | Hayfork MRB | 40° 33.131' N | 123° 11.925' W |
| Repeater | Bully Choop | 40° 33.186' N | 122° 46.063' W |
| Repeater | CMD 1 | 40° 47.844' N | 123° 00.196' W |
| Repeater | CMD 2 | 40° 39.532' N | 123° 13.164' W |
| Repeater | CMD 3 | 40° 33.315' N | 122° 46.015' W |
| Repeater | CMD 4 | 40° 54.137' N | 123° 40.137' W |
| Repeater | CMD 5 | 40° 49.935' N | 123° 27.037' W |