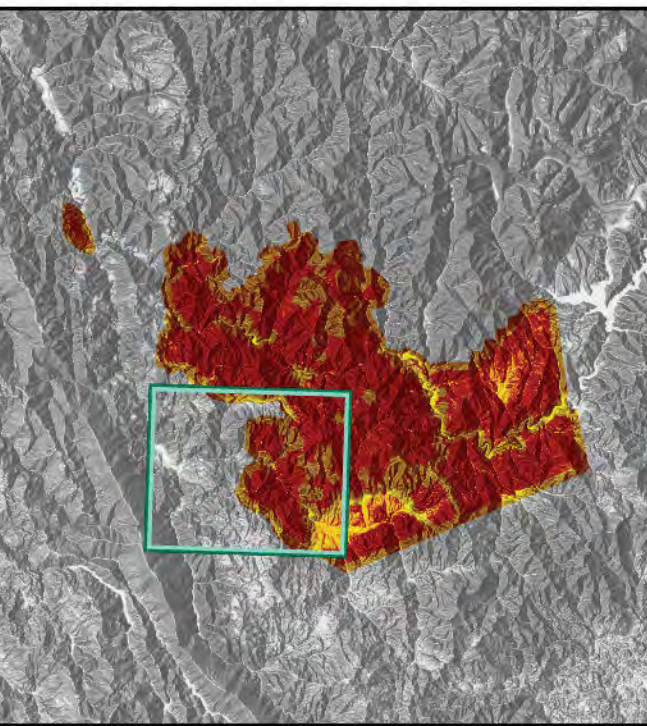


- Check Point
- Dip Site
- Mobile Retardant Base
- Helispot
- Unimproved Landing Area
- × Division Break
- ▬ Branch Break
- ▬ Drop Point
- ▬ Camp
- ▬ Staging Area
- ▬ Lookout
- ▬ Hot Spot - Spot Fire
- ▬ Value at Risk
- ▬ Bridge
- ▬ Internet Access
- ▬ Repeater
- ▬ Safety Zone
- ▬ Hazard
- ▬ Water Source
- ▬ Road Closure
- ▬ Buildings
- ▬ Inventoried Roadless Area
- ▬ Active Burnout
- ▬ Completed Dozer Line
- ▬ Completed Fuel Break
- ▬ Completed Hand Line
- ▬ Completed Mixed Construction Line
- ▬ Completed Road as Line
- ▬ Planned Dozer Line
- ▬ Planned Hand Line
- ▬ Planned Mixed Construction Line
- ▬ Planned Road as Line
- ▬ Access or Improved Road
- ▬ Other
- ▬ Road Repair
- ▬ Retardant Drop
- ▬ Fire Edge
- ▬ Contained Line
- ▬ Other
- ▬ Wildfire Daily Fire Perimeter
- ▬ Crane Mills
- ▬ Sierra Pacific Industries
- ▬ Trinity Timberlands LLC
- ▬ Non-FS Lands
- ▬ IR Polygon
- ▬ FC IR Polygon Type
- ▬ IR Heat Perimeter
- ▬ IR Intense Heat
- ▬ IR Scattered Heat
- ▬ IR_Point



BRANCH 40

DIV Z

Bar 717

DIV 18 Rd

Butter Creek Meadows

DIV W

DIV RR

Ray's Peak

Miners Creek

James Creek

Halfway Rd 3N22

Butter Creek 3N08 Rd

Indian Valley

Camp Trinity 3N20

Grassy Flat 3N21

Butter Creek Meadows

Sims Gap

Hayfork

Pattison Pk Jeep Trail

Pattison Pk Trail

West Fork Miners Creek

Pasture Gulch

Bear Creek

10 Rd

10 Rd

St. John Rd

10 Rd

10 Rd

10 Rd