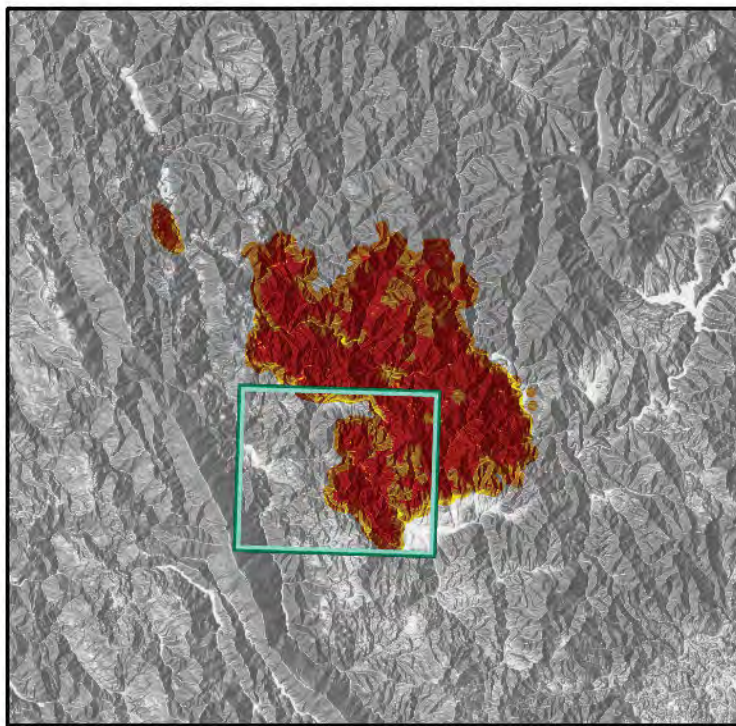
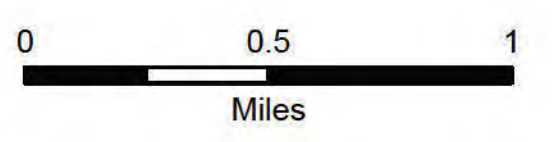


- Check Point
- Dip Site
- Mobile Retardant Base
- Helispot
- Unimproved Landing Area
- ⋈ Division Break
- ⋈ Branch Break
- Drop Point
- Camp
- Staging Area
- Lookout
- Hot Spot - Spot Fire
- Value at Risk
- Bridge
- Internet Access
- Repeater
- ▲ Safety Zone
- ▲ Hazard
- Water Source
- Road Closure
- Buildings
- Inventoried Roadless Area
- Active Burnout
- Completed Dozer Line
- Completed Fuel Break
- Completed Hand Line
- Completed Mixed Construction Line
- Completed Road as Line
- Planned Dozer Line
- Planned Hand Line
- Planned Mixed Construction Line
- Planned Road as Line
- Access or Improved Road
- Other
- Road Repair
- Retardant Drop
- Fire Edge
- Contained Line
- Other
- Wildfire Daily Fire Perimeter
- Crane Mills
- Sierra Pacific Industries
- Trinity Timberlands LLC
- Non-FS Lands



BRANCH 40

DIV Z

DIV Y

DIV W

DIV RR

Ray's Peak

West Fork Miners Creek

Miners Creek

Pasture Gulch

James Creek

Sims Gap

Butter Creek Meadows

Indian Valley

Pattison Pk Jeep Trail

Pattison Pk Trail

Bar 7

Bar 717

Grassy Flat 3N21

Halfway Rd 3N22

Camp Trinity 3N20

10 Rd

10 Rd

10 Rd

St. John Rd

SHASTA TRINITY NATIONAL FOREST

SHASTA TRINITY NATIONAL FOREST

HAYFORK

HAYFORK

HAYFORK

HAYFORK

HAYFORK

HAYFORK

HAYFORK

HAYFORK

HAYFORK

HAYFORK

HAYFORK

HAYFORK

HAYFORK