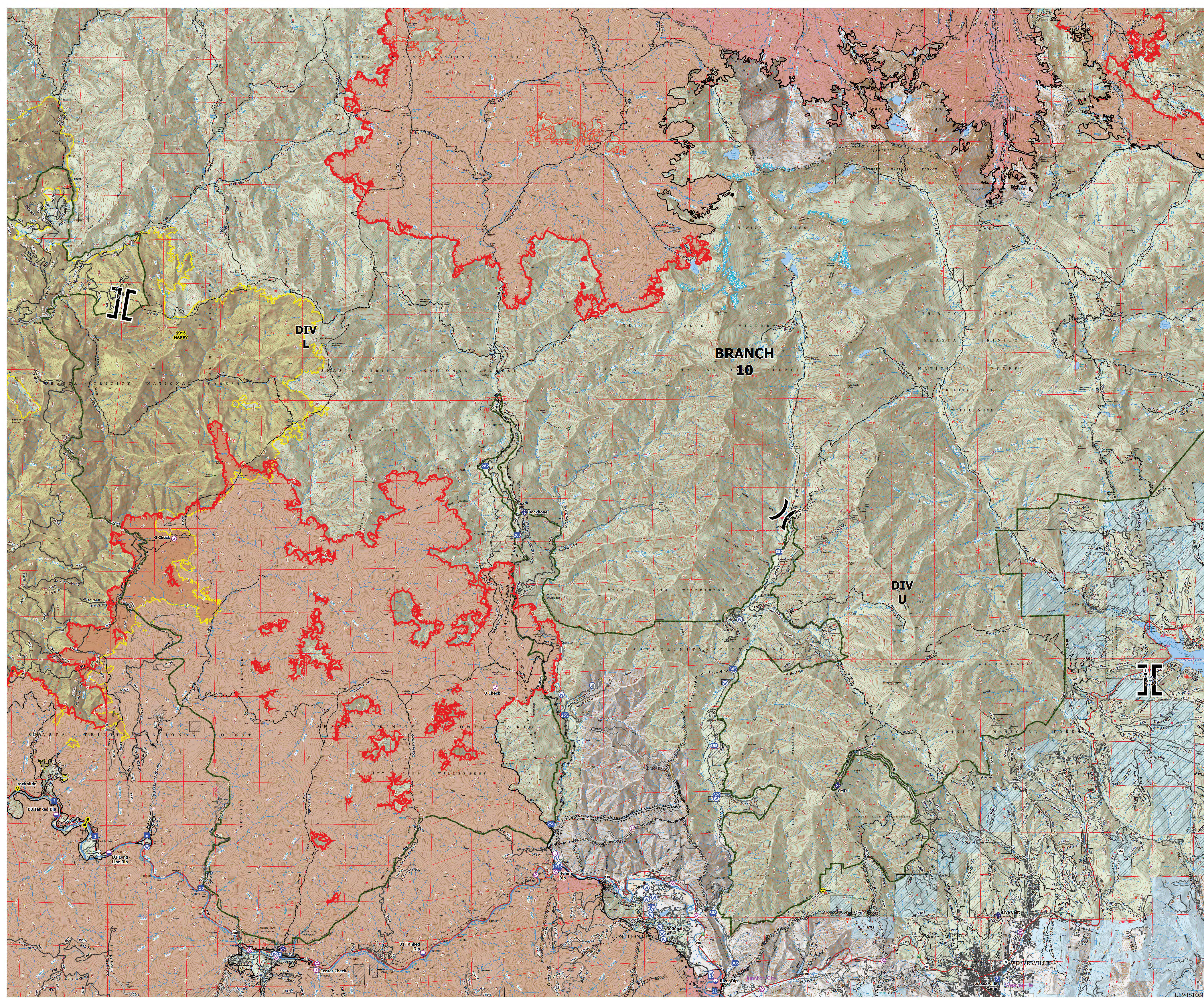
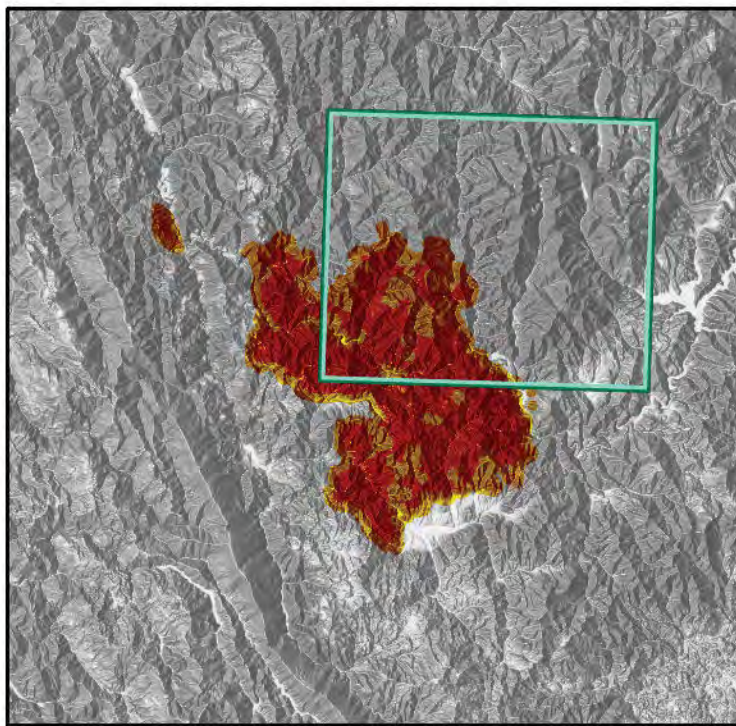


**Branch 10**  
 Monument  
 CA-SHF-001187  
 09/20/2021  
 218457 acres as of  
 09/17/2021 at 1949

- Aerial Hazard
- Airstrip or Airport
- Check Point
- Dip Site
- Unimproved Landing Area
- ✕ Division Break
- ✕ Branch Break
- Drop Point
- Camp
- Hot Spot - Spot Fire
- Value at Risk
- Bridge
- Mobile Weather Unit
- Repeater
- Hazard
- Water Source
- Soft Closure
- Buildings
- Completed Dozer Line
- Completed Fuel Break
- Completed Hand Line
- Completed Mixed Construction Line
- Completed Road as Line
- Planned Dozer Line
- Planned Hand Line
- Planned Road as Line
- Access or Improved Road
- Highlighted Feature
- Road Repair
- Fire Edge
- Contained Line
- Other
- Wildfire Daily Fire Perimeter
- National Wilderness Area
- Sierra Pacific Industries
- Non-FS Lands
- Historical Wildfires



JC

DIV  
L

BRANCH  
10

DIV  
U

JC

rock slide  
 D3 Tanked Dip  
 D2 Long Line Dip

U Check

JUNCTION CITY

WEAVERVILLE

LEWISTON