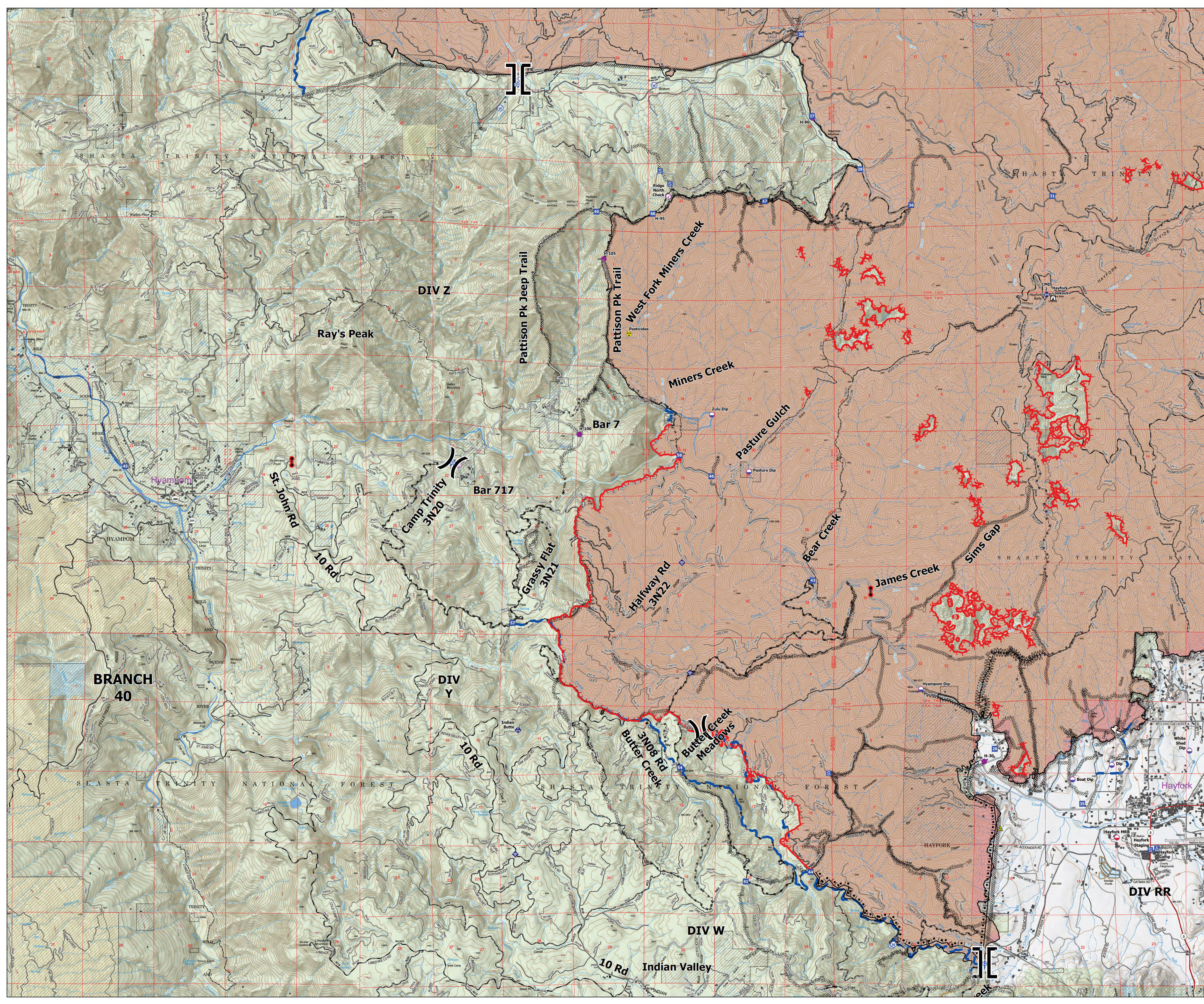
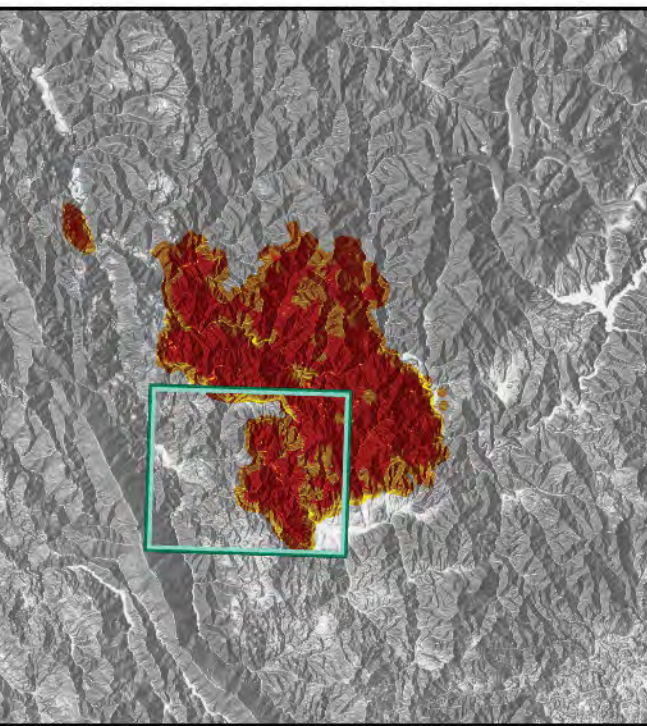


**Branch 40**  
 Monument  
 CA-SHF-001187  
 09/20/2021  
 218457 acres as of  
 09/17/2021 at 1949

- Check Point
- Dip Site
- Mobile Retardant Base
- Helispot
- Unimproved Landing Area
- ⌋ Division Break
- ⌋ Branch Break
- Drop Point
- Camp
- Staging Area
- Lookout
- Hot Spot - Spot Fire
- Value at Risk
- Bridge
- Mobile Weather Unit
- Internet Access
- Repeater
- ▲ Safety Zone
- ▲ Hazard
- Water Source
- Road Closure
- Buildings
- Active Burnout
- ⊘ Completed Dozer Line
- ⊘ Completed Fuel Break
- ⊘ Completed Hand Line
- ⊘ Completed Mixed Construction Line
- ⊘ Completed Road as Line
- ⊘ Planned Dozer Line
- ⊘ Planned Hand Line
- ⊘ Planned Mixed Construction Line
- ⊘ Planned Road as Line
- ⊘ Access or Improved Road
- ⊘ Other
- Road Repair
- Fire Edge
- Contained Line
- Other
- Wildfire Daily Fire Perimeter
- Crane Mills
- Sierra Pacific Industries
- Trinity Timberlands LLC
- Non-FS Lands
- Historical Wildfires



**BRANCH 40**

**DIV Z**

**DIV Y**

**DIV W**

**DIV RR**

Pattison Pk Jeep Trail

Pattison Pk Trail

Miners Creek

Pasture Gulch

Bear Creek

James Creek

Sims Gap

Halfway Rd 3N22

Butter Creek Rd 3N08

Indian Valley

Ray's Peak

Camp Trinity 3N20

Grassy Flat 3N21

Butter Creek Meadows

Hayfork

Hayfork MRB

Hayfork Scoping

Hayfork Camp

Hayfork

Hayfork

Hayfork