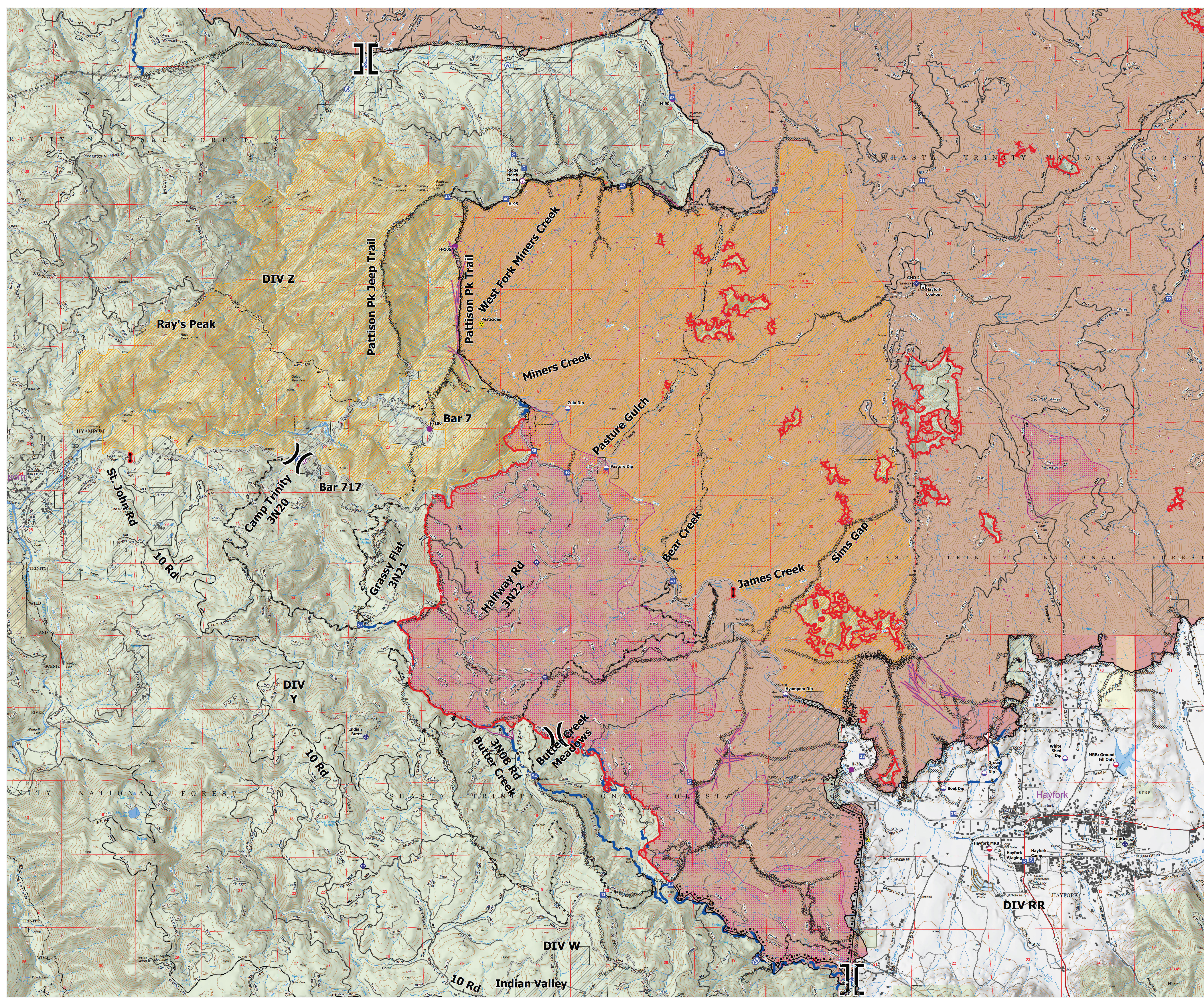
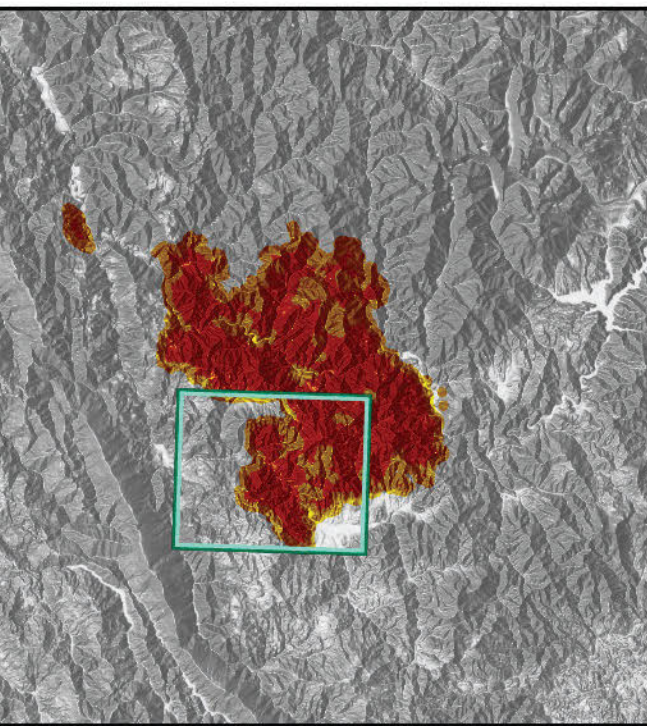
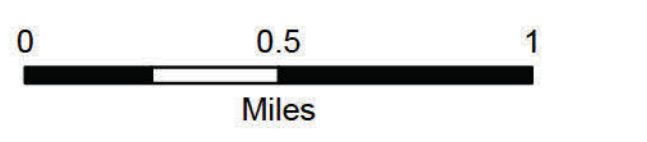


DIV Z/W
 Monument
 CA-SHF-001187
 09/20/2021
 218,457 acres as of
 09/17/2021 at 1949

- Check Point
- Dip Site
- Mobile Retardant Base
- Helispot
- Unimproved Landing Area
- Division Break
- Branch Break
- Drop Point
- Camp
- Staging Area
- Lookout
- Hot Spot - Spot Fire
- Value at Risk
- Bridge
- Mobile Weather Unit
- Internet Access
- Repeater
- Safety Zone
- Hazard
- Water Source
- Road Closure
- Buildings
- Inventoried Roadless Area
- Active Burnout
- Completed Dozer Line
- Completed Fuel Break
- Completed Hand Line
- Completed Mixed Construction Line
- Completed Road as Line
- Planned Dozer Line
- Planned Hand Line
- Planned Mixed Construction Line
- Planned Road as Line
- Access or Improved Road
- Other
- Retardant Drop
- Fire Edge
- Contained Line
- Other
- Wildfire Daily Fire Perimeter
- Crane Mills
- Trinity Timberlands LLC
- Non-FS Lands
- IR Point
- IR Point
- IR Polygon Type
- IR Heat Perimeter
- IR Intense Heat
- IR Scattered Heat



DIV Z

DIV Y

DIV W

DIV RR

Ray's Peak

Camp Trinity
3N20

Grassy Flat
3N21

Halfway Rd
3N22

Butter Creek
3N08 Rd
Meadows

Pattison Pk Jeep Trail

Pattison Pk Trail

West Fork Miners Creek

Miners Creek

Pasture Gulch

Bear Creek

James Creek

Sims Gap

St. John Rd

10 Rd

10 Rd

10 Rd

Indian Valley

Bar 717

Bar 7

Hayfork

HAYFORK